

SANBORN - PERRIS MAP CO. LIMITED
 117 & 119 Broadway
 NEW YORK

Population 2000.
 No Steam & No Hand Engines
 Independent Horse Carts
 Water Facilities - SEE NOTE.

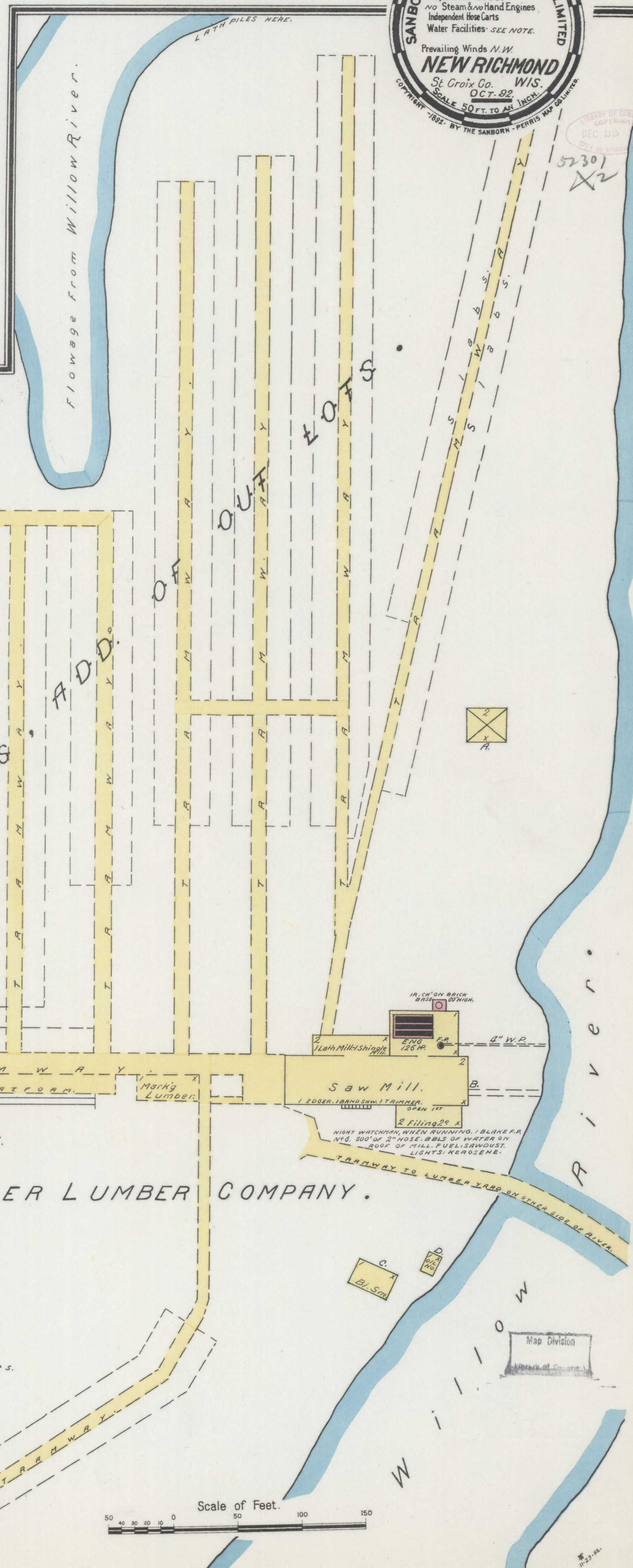
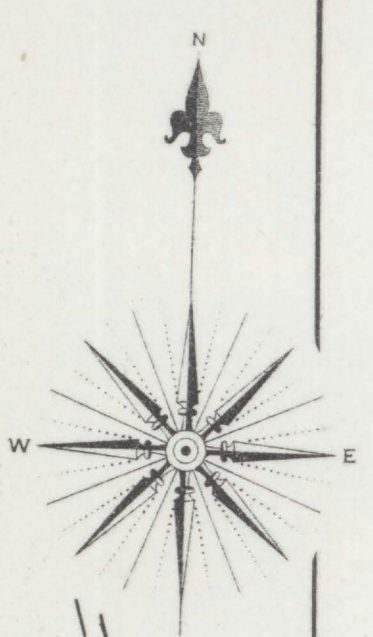
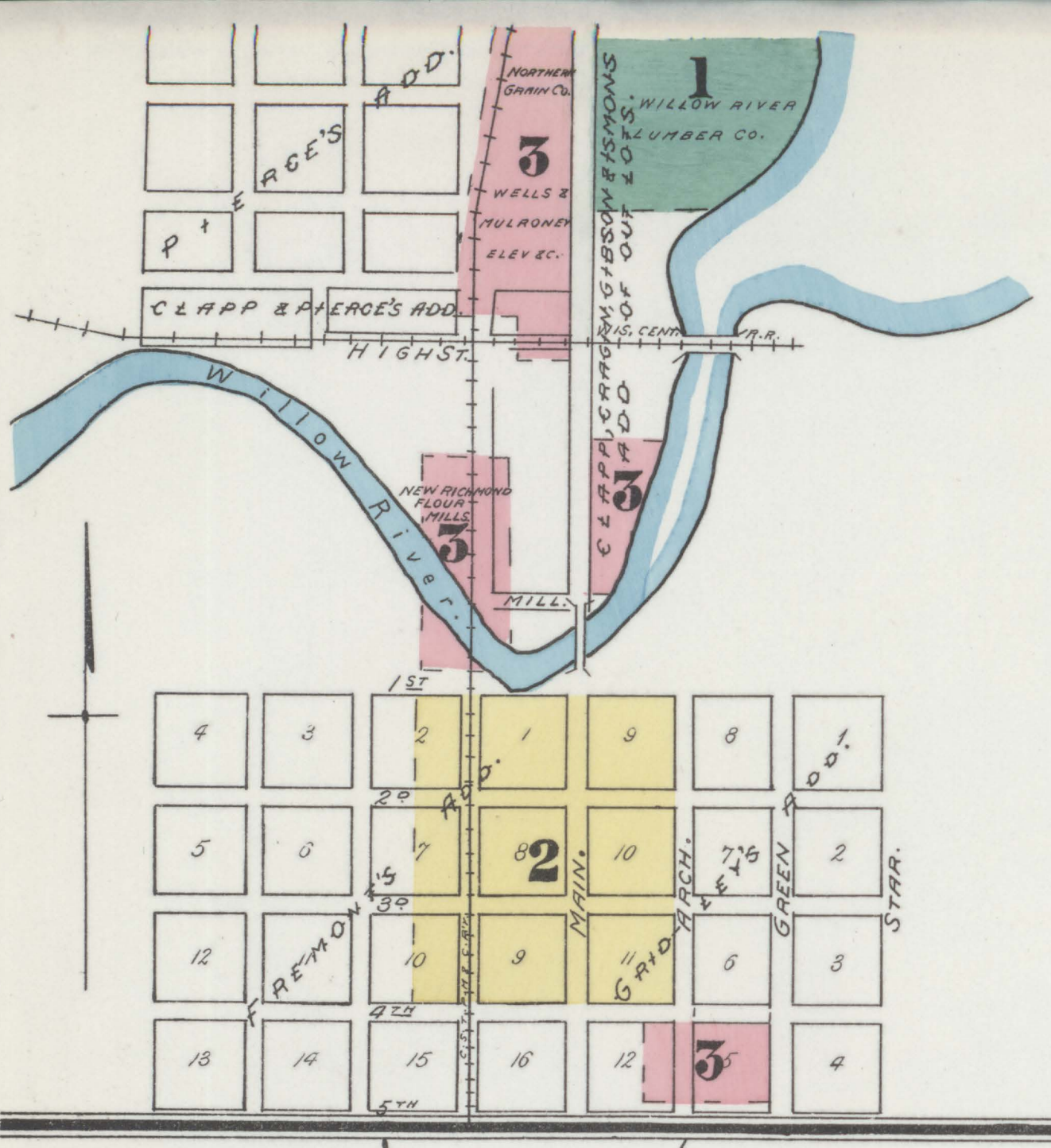
Prevailing Winds N.W.
NEW RICHMOND
 St. Croix Co. WIS.
 OCT. 92
 SCALE 50 FT. TO AN INCH.

COPYRIGHT 1892 BY THE SANBORN - PERRIS MAP CO. LIMITED

NOTE.
 NO STREET LIGHTS. STREETS NOT PAVED.
 GRADES LEVEL. FIRE DEPT. 1. HOOK &
 LADDER TRUCK TO HAVE 2 HOSE CHITS.
 WATER HOOKS BEING PUT IN TO HAVE
 ONE SMITH & VAIL PUMP, CAPY 30 MILLION
 GALLONS. WATER TO BE PUMPED FROM
 ARTESIAN WELL INTO TANK RESERVOIR.
 65' HIGH. 60000 GALLS CAPY. DOMESTIC
 PRESSURE 10 LBS. FIRE PRESSURE 20-
 30 LBS. PROPOSED LINE OF PIPES SHOWN
 ON SHEETS, ALSO PROPOSED LOCATION
 OF HYDRANTS.

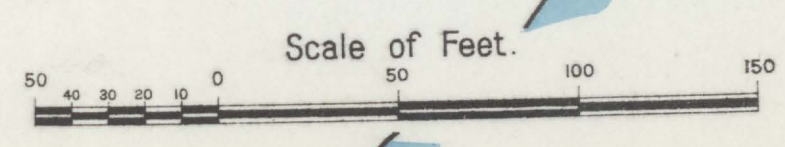
INDEX.

SPECIALS.	HEIGHT
Congregational Church,	3
Farmers Hotel,	3
Kibbe & Co., Sash & Blind Factory,	3
Libby, Lyman, Planing Mill,	3
Masonic Hall,	2
Merchants Hotel,	3
New Richmond Flour Mills,	3
Nicollet House,	2
Northern Grain Co.,	3
Public School,	3
Skating Rink,	2
Wells & Maloney, Elevator,	3
Willow River Lumber Co.,	1

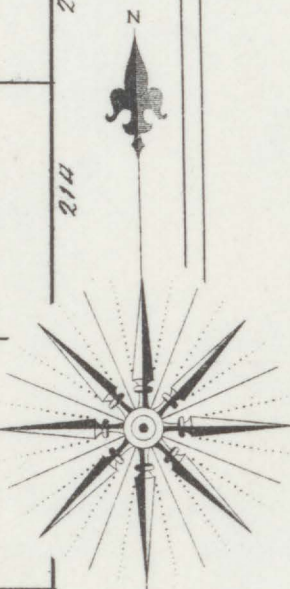


KEY

5' HIGH STORIES	5	FIFT WALL GIN AB ROOF
SHINGLE ROOF	12	"
CORNER ROOF	18	"
SLATE ON THE ROOF	18	"
FRAME PARTITION		
OPENING & IRON DOOR		
WINDOWS - SHUTTERS		
STABLE		
WINDOW IN 1ST STORY		
17' & 30"		
27' & 45"		
WALLS COLORED YELLOW ARE FRAME		
RED - BRICK		
BLUE - STONE		
GREY - IRON		
BROWN - ADOBE		
GREEN - SPECIALS		
MARKED (C) ARE CLOVE LINED		
(S) INDICATE RELATIVE HEIGHTS		
ALTERNATE STREET NOS ARE ACTUAL		
CONSECUTIVE " " ARBITRARY		
BROKEN LINE NEAR BLDG - WOOD CORNICE		
SOLID " " METAL		



52301
 X2



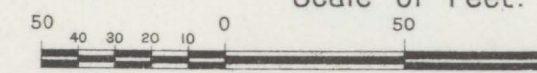
OCT. 1892
NEW RICHMOND
 WIS.

LOCUST

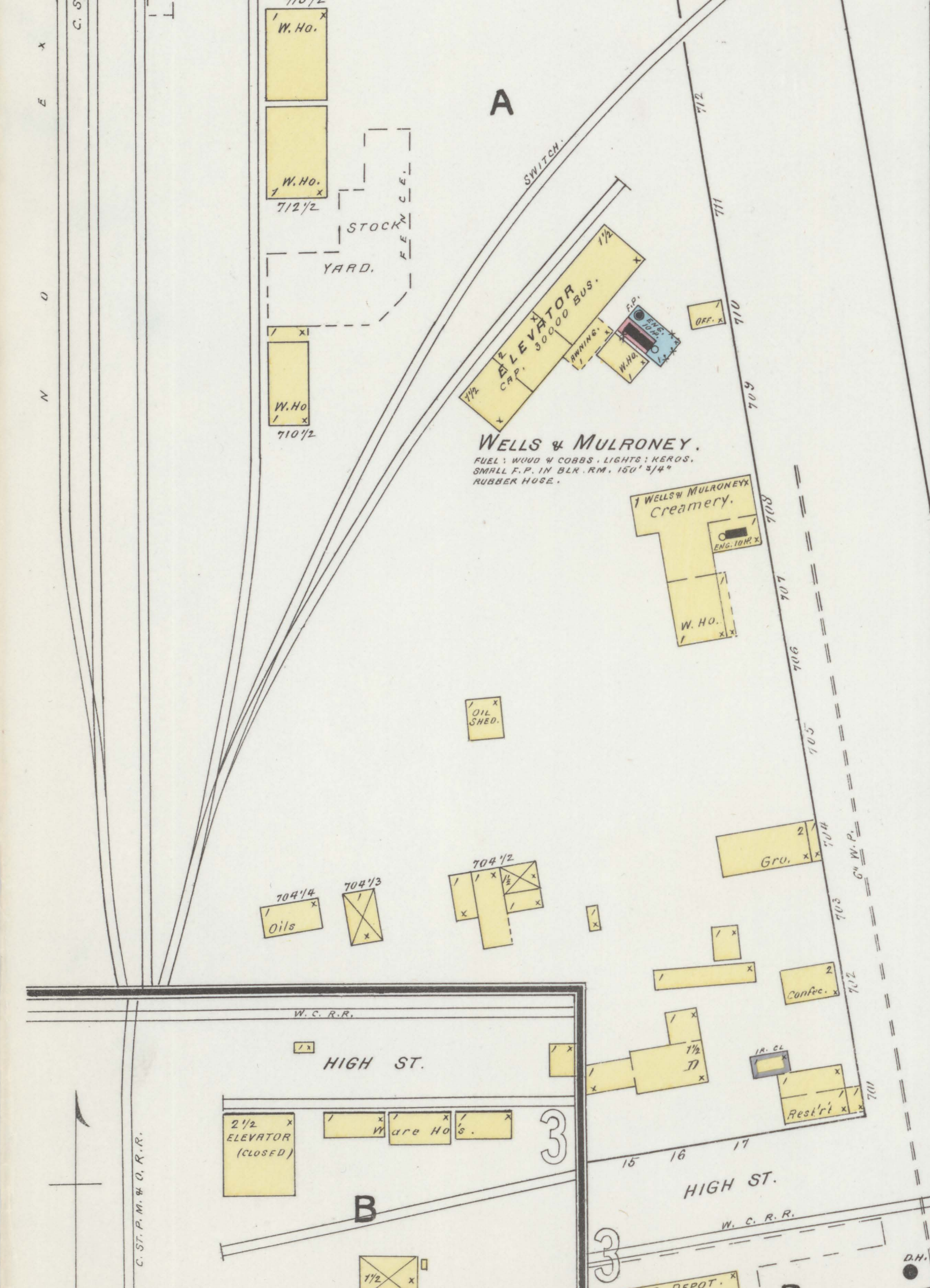
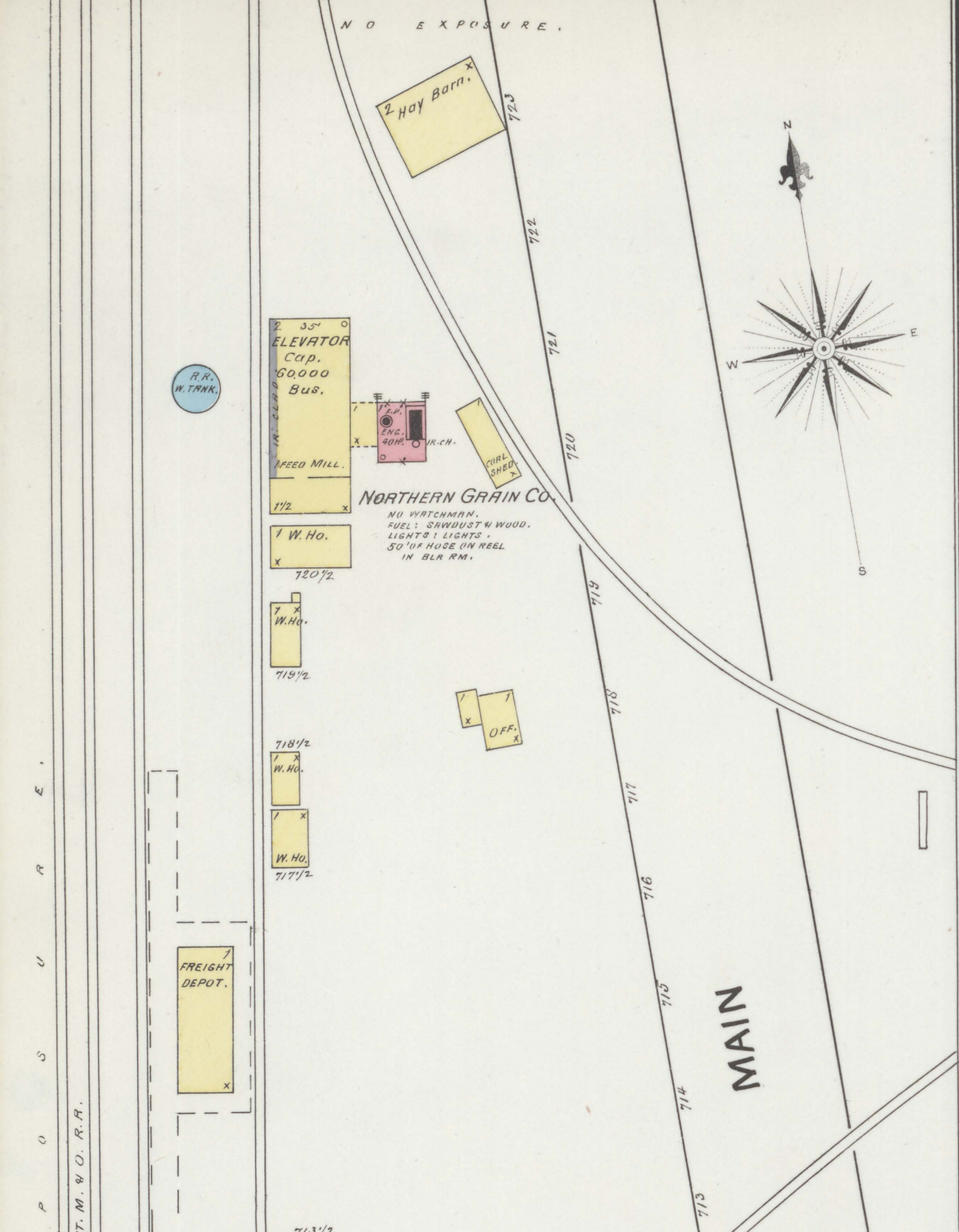
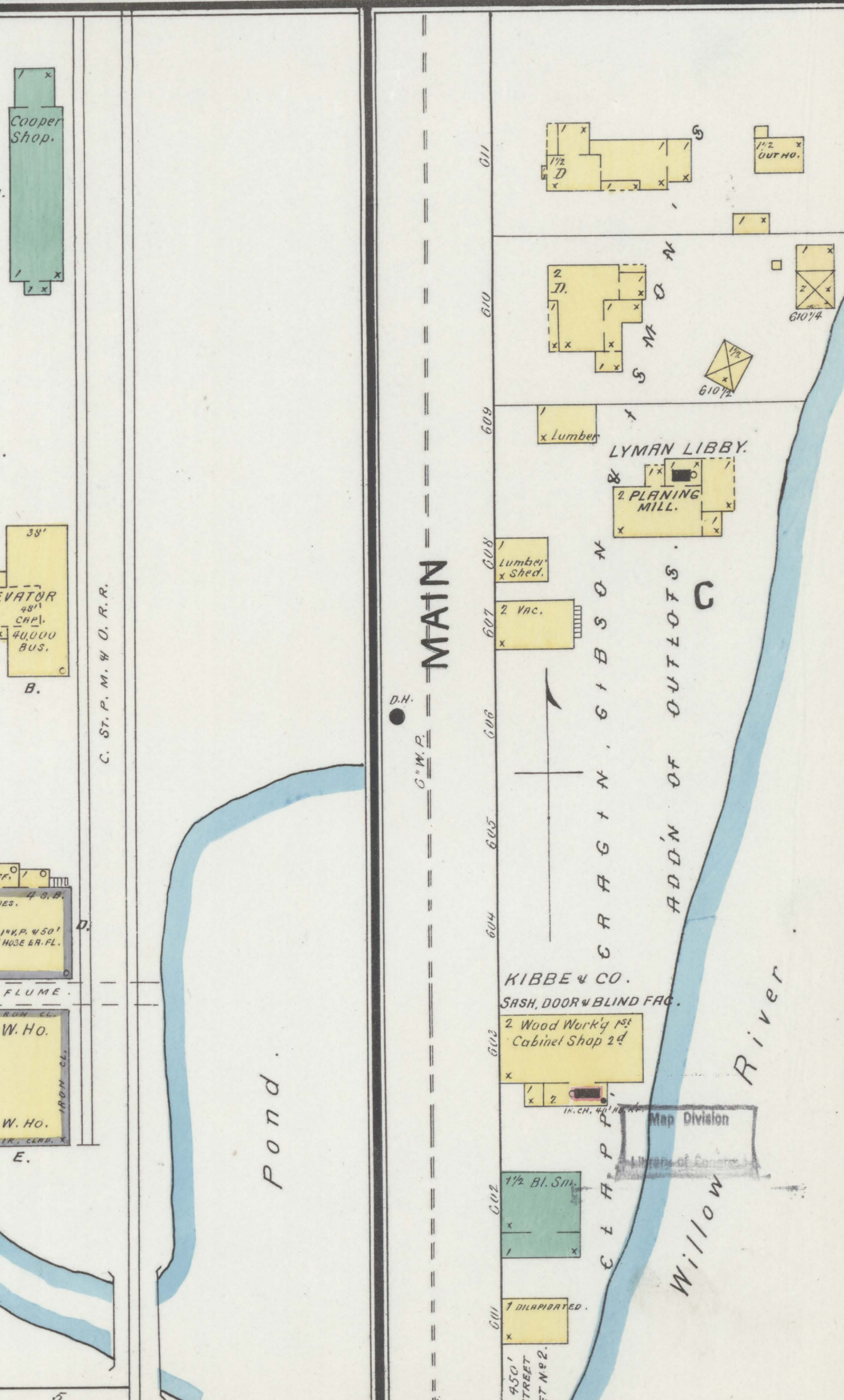
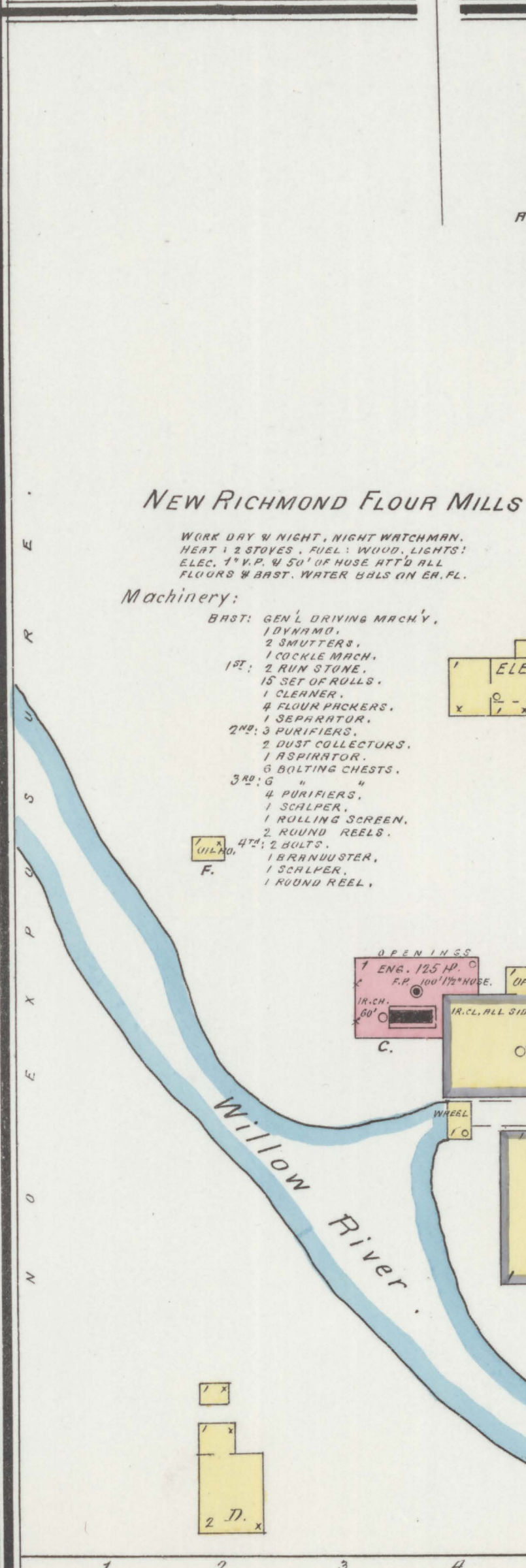
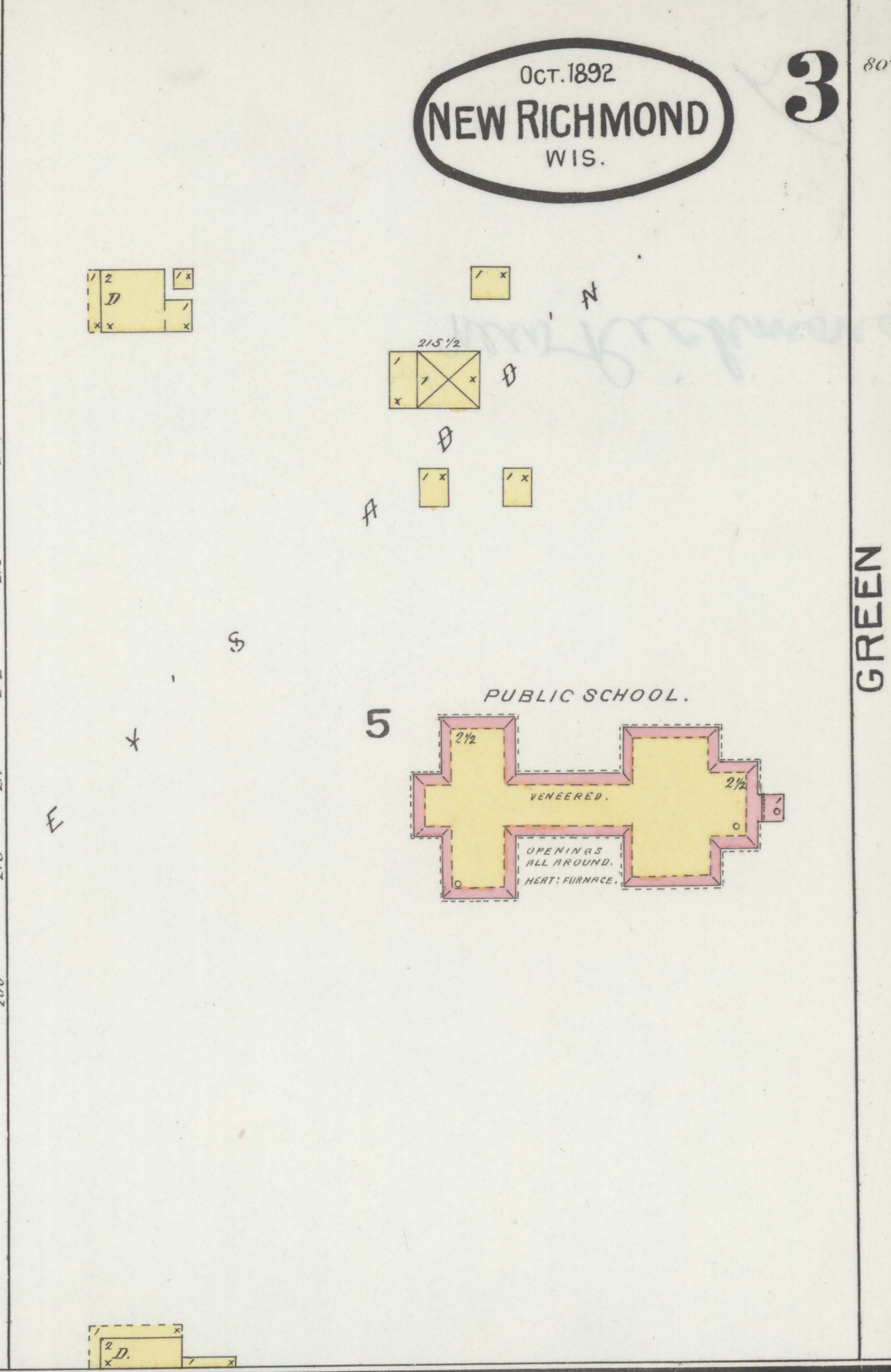
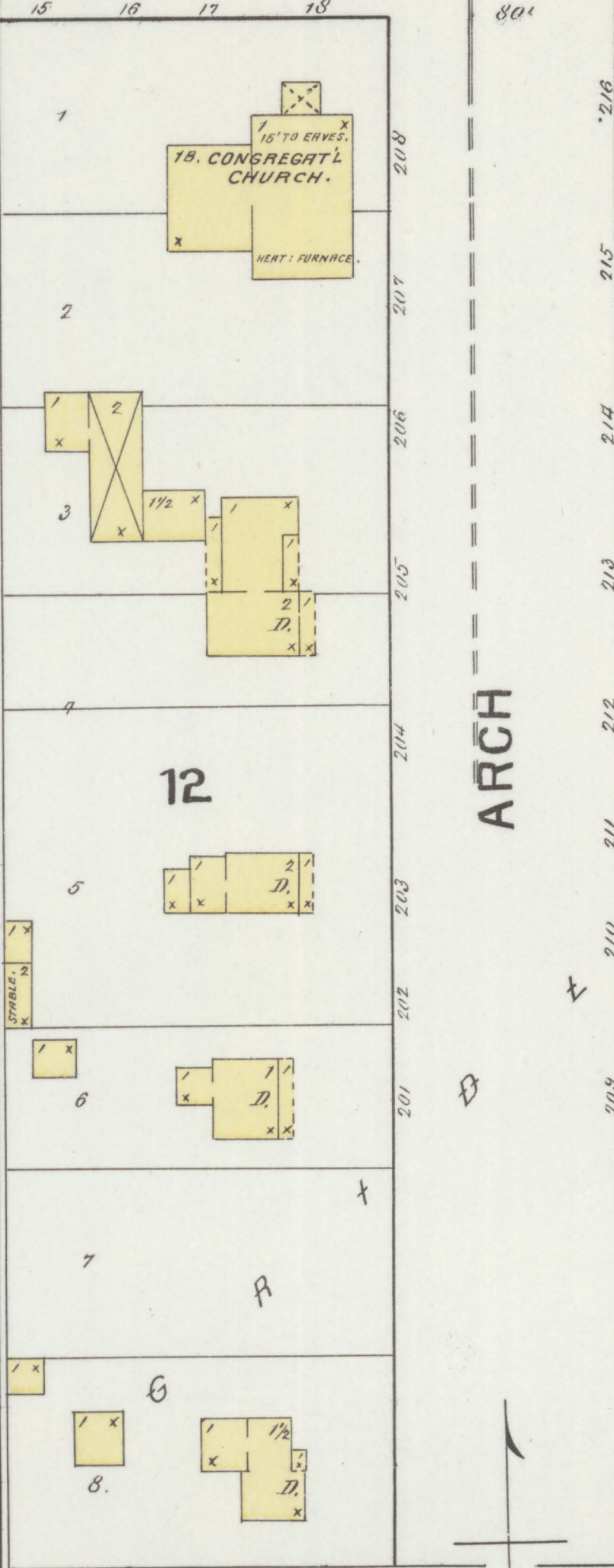
MAIN

ARCH

Scale of Feet.



4TH 2ND W. P. ST.



NEW RICHMOND FLOUR MILLS.

WORK DAY & NIGHT, NIGHT WATCHMAN.
HEAT: 2 STOVES, FUEL: WOOD, LIGHTS:
ELEC. T.V.P. & 50' OF HOLE WTS ALL
FLOORS W. ART. WATER SALS ON BR. PL.

- Machinery:
- BRST: GEN'L DRIVING MACH'Y,
1 DYNAMO,
2 SHUFFERS,
1 TUCKER MACH.,
2 RUN STONE,
15 SET OF ROLLS,
1 CLEANER,
4 FLOUR PICKERS,
1 SEPARATOR,
2ND: 3 PURIFIERS,
2 DUST COLLECTORS,
1 ASPIRATOR,
5 BULGING CHESTS,
3RD: 6
4 PURIFIERS,
1 SCALPER,
1 ROLLING SCREEN,
2 ROUND REELS,
4TH: 2 BULTS,
1 BRANNUSTER,
1 SCALPER,
1 ROUND REEL.

Scale of Feet.
50 100 150