

GLENWOOD ROLLER MILLS

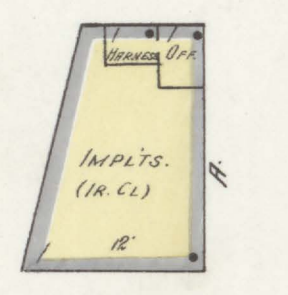
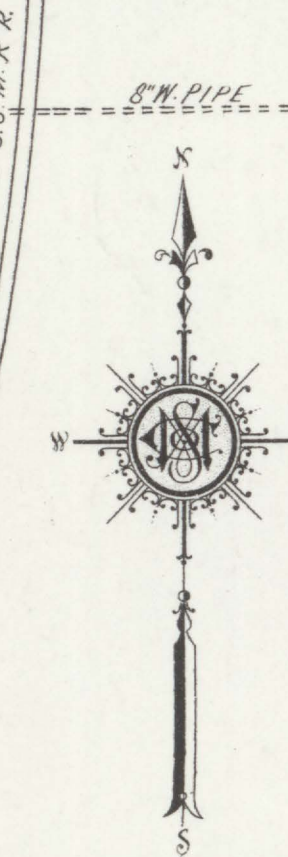
NOT IN OPERATION
NO MITCHELL, HERT OR LIGHT.
FUEL: COAL - NO FIRE APPS.
MACHINERY
1ST. LINE SHAFING
1500000, 1500000 & ELEVATORS
4 DOUBLE ROLLS
2 SEPARATORS, 1 SCHLIPER
1 ROTATOR.

KEY

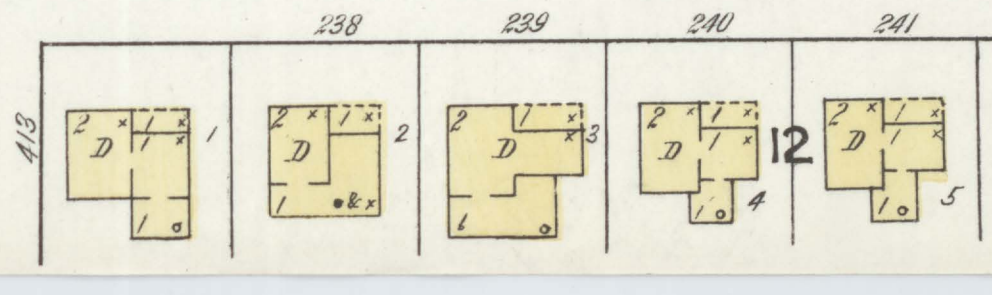
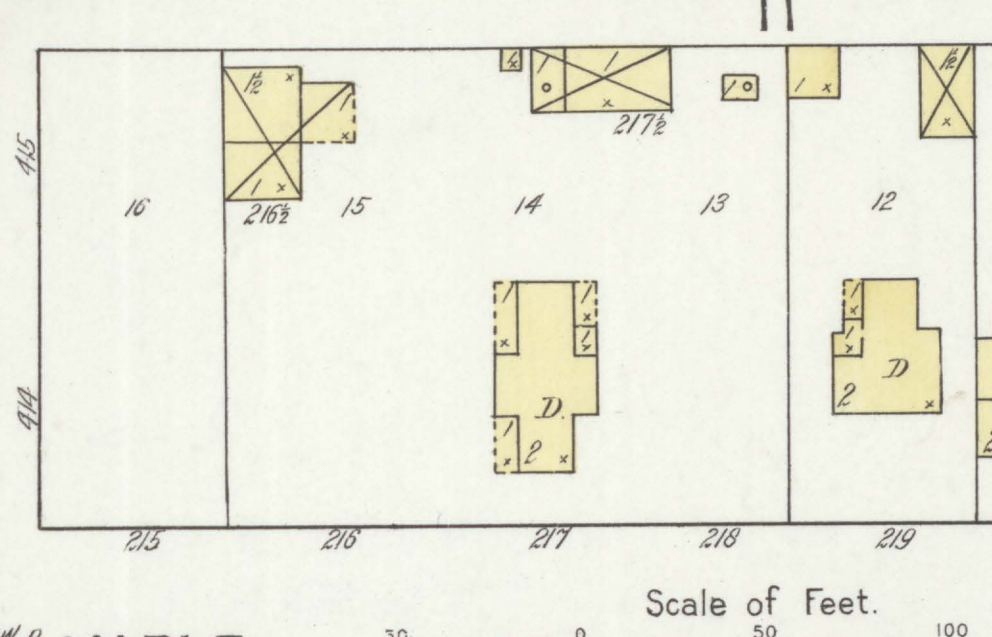
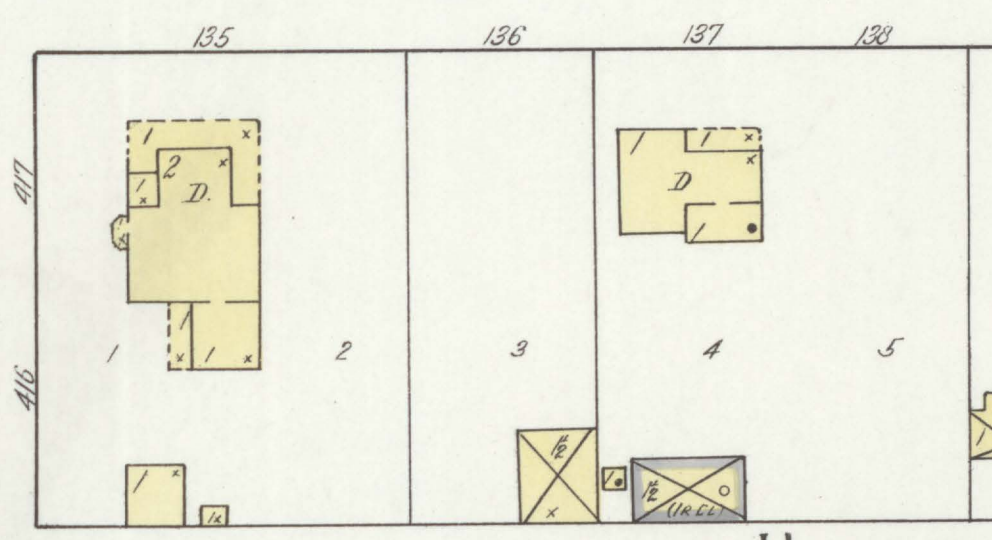
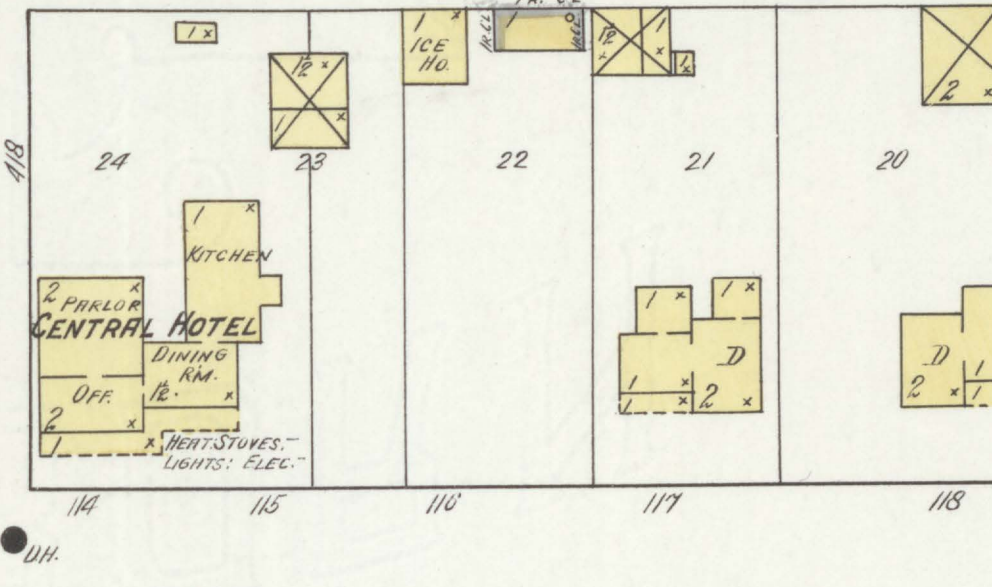
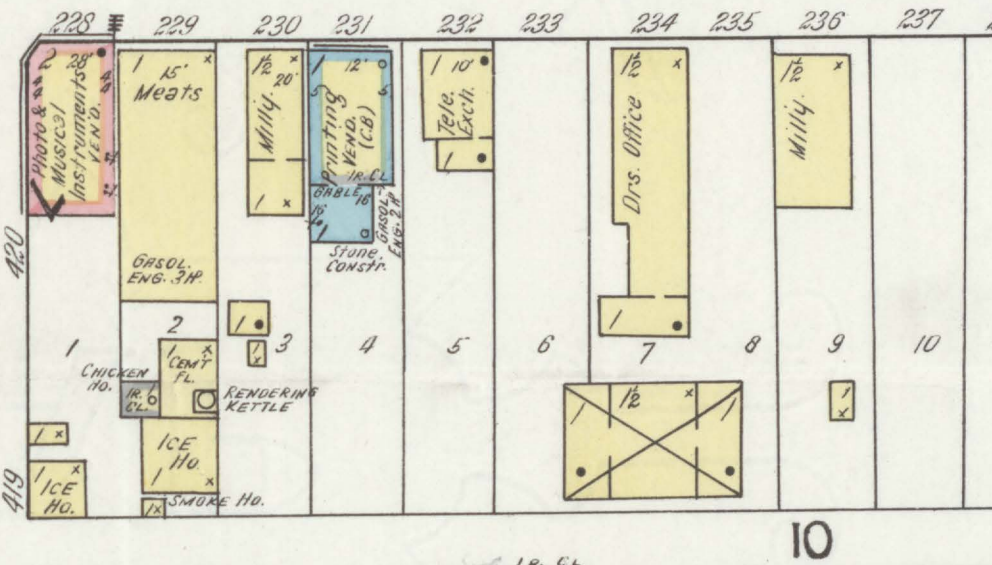
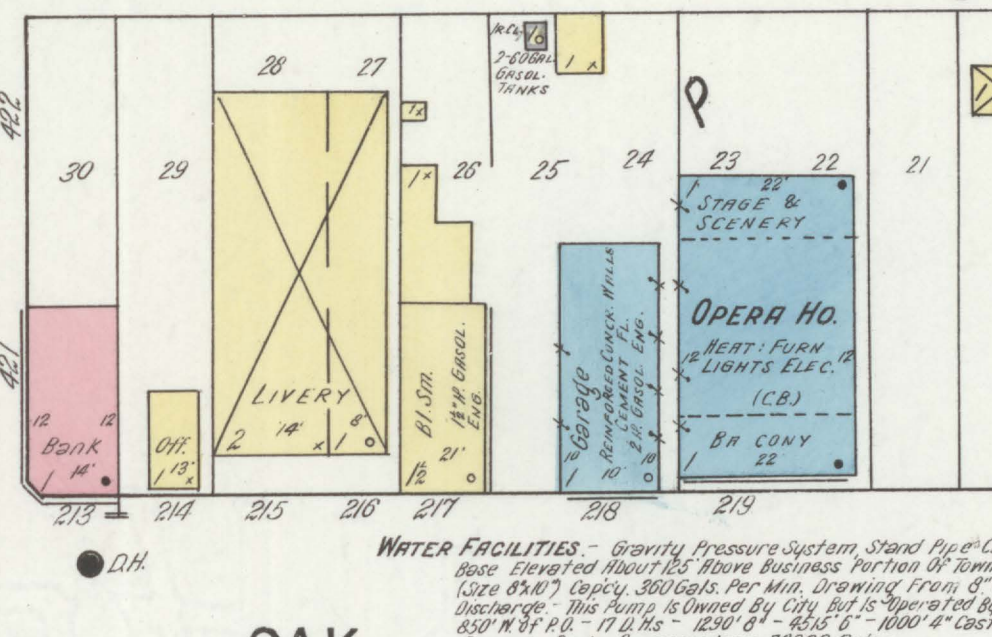
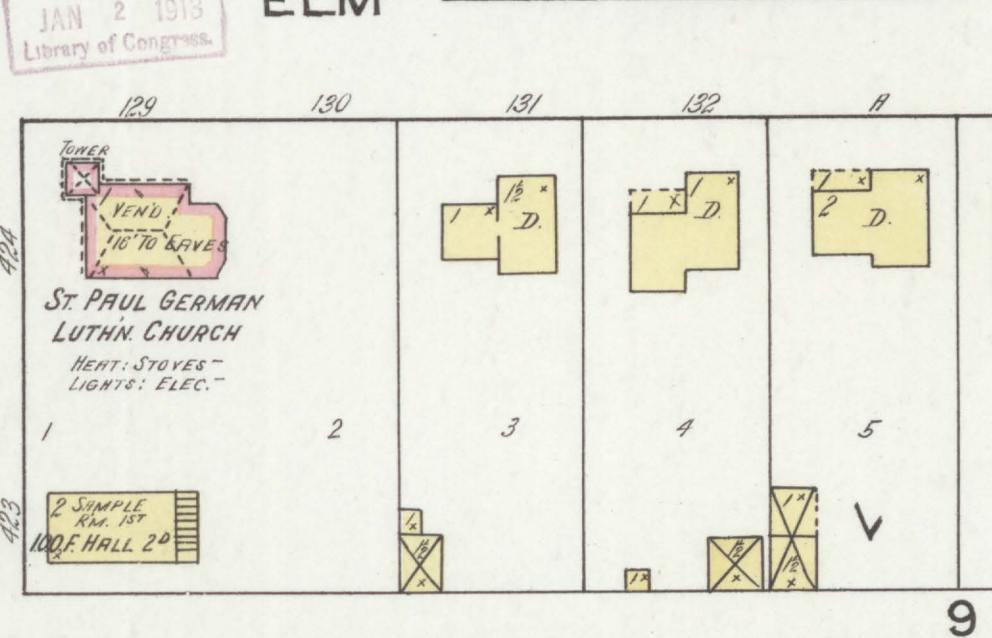
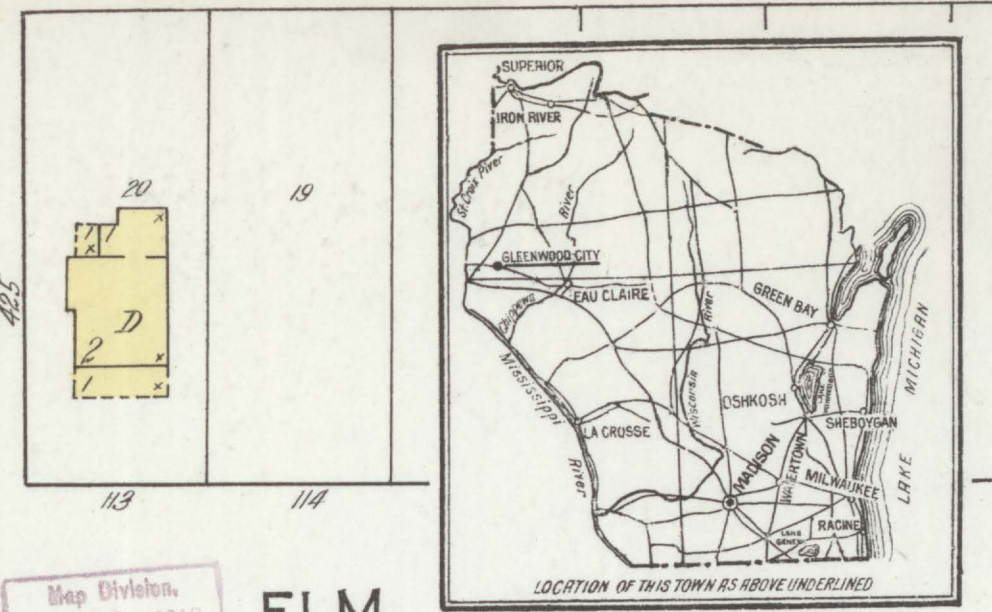
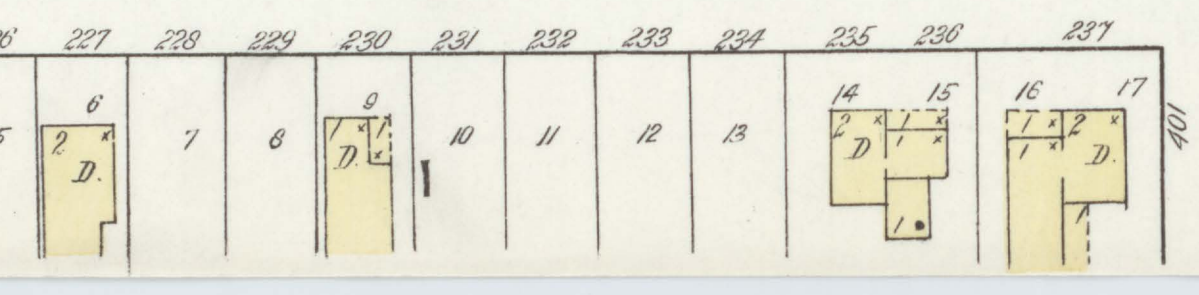
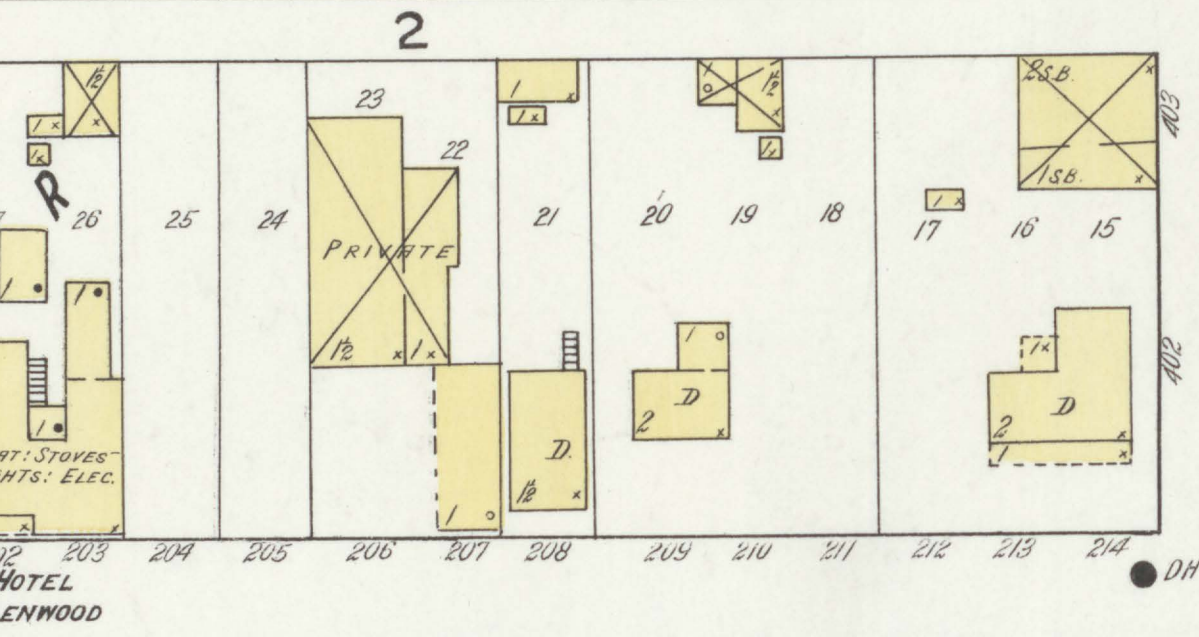
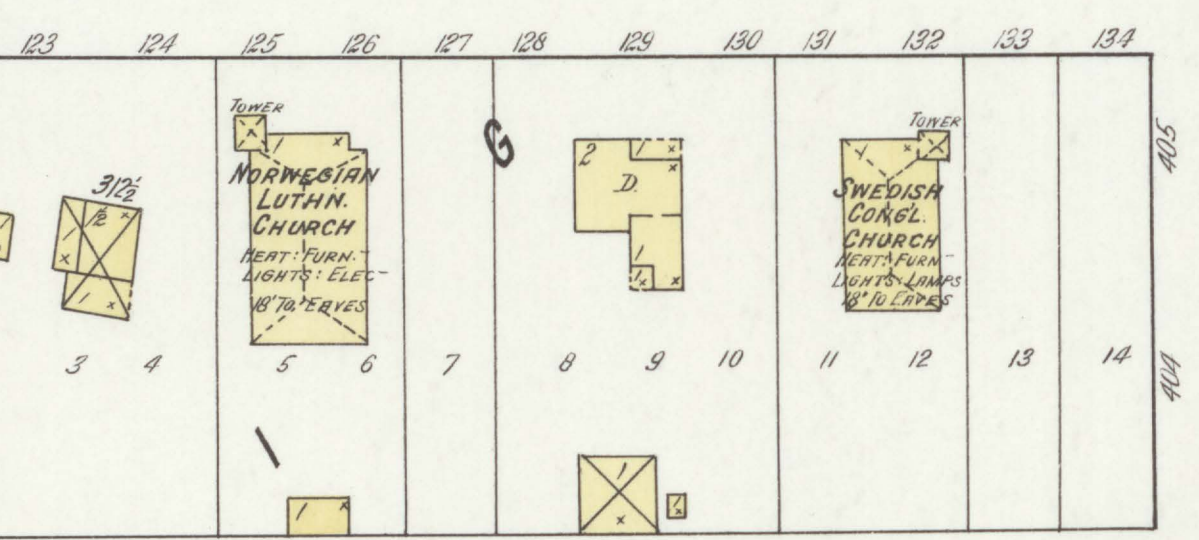
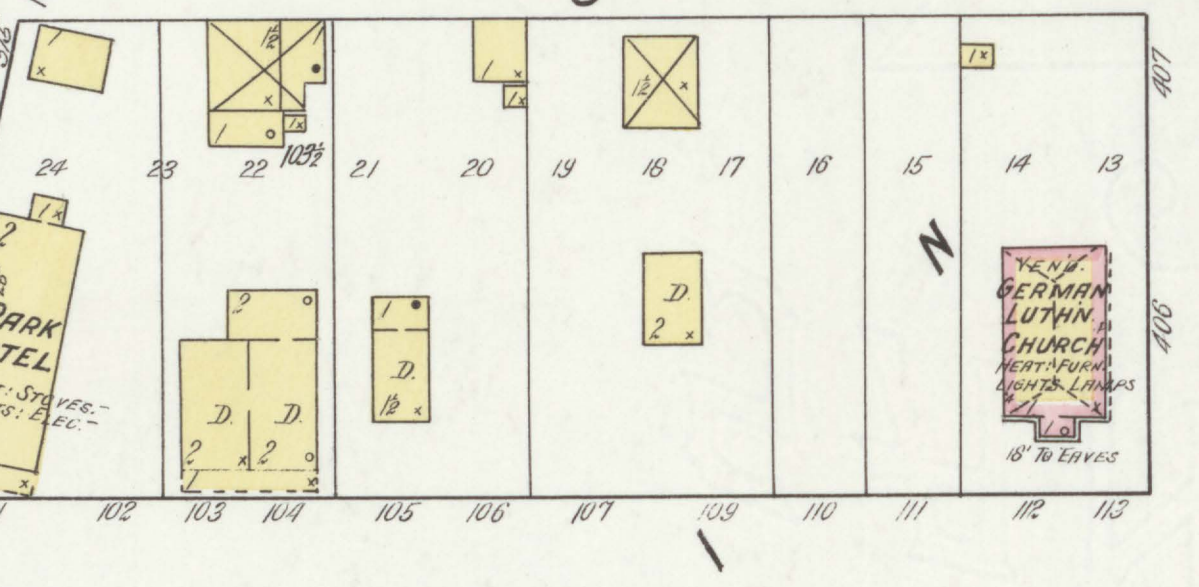
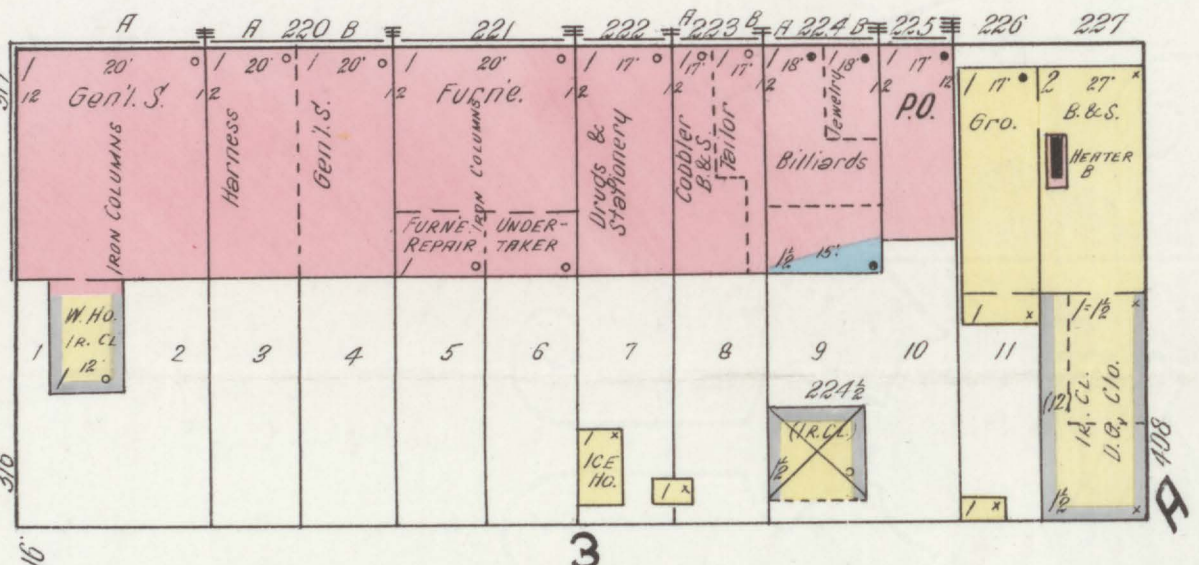
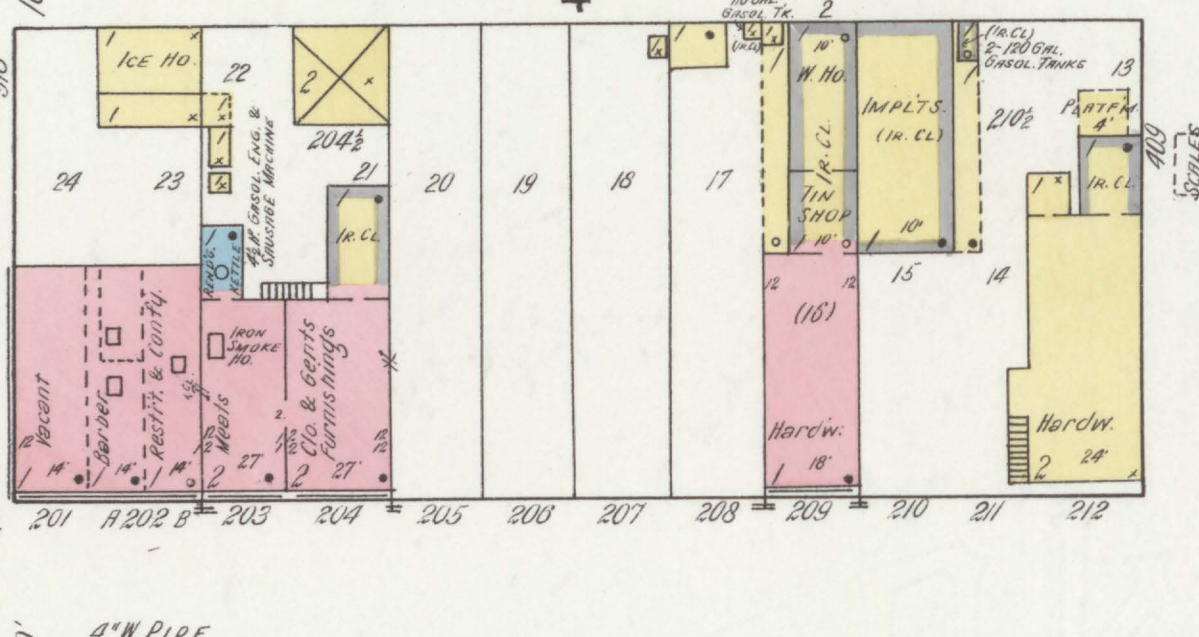
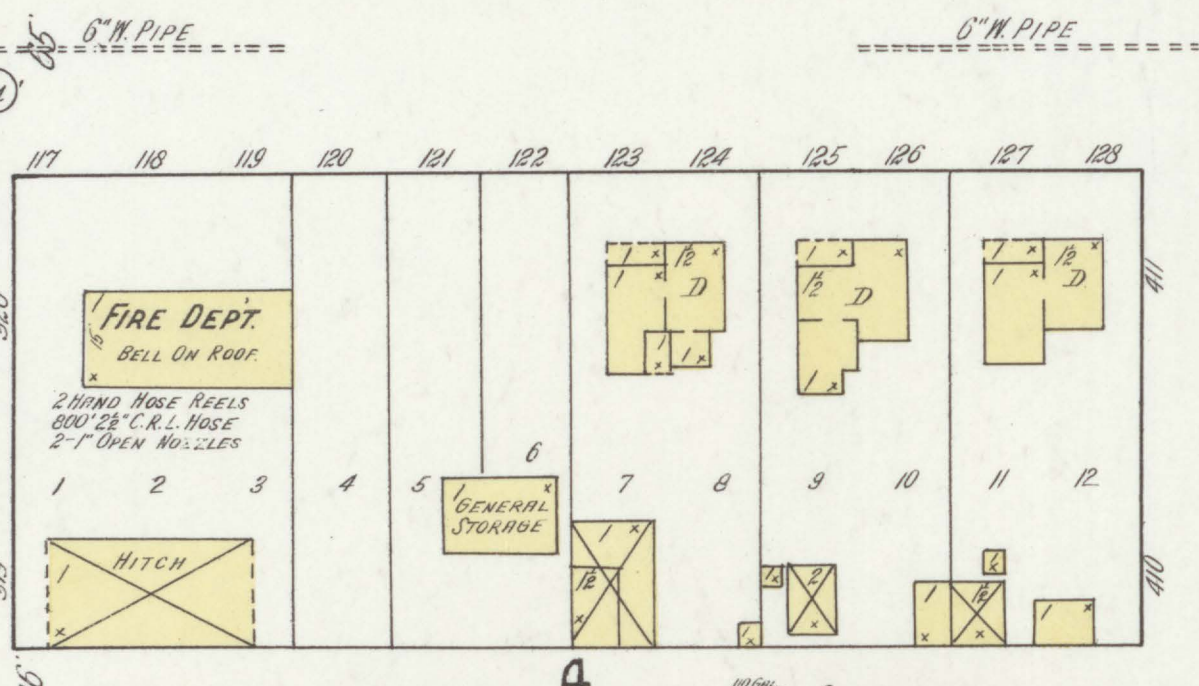
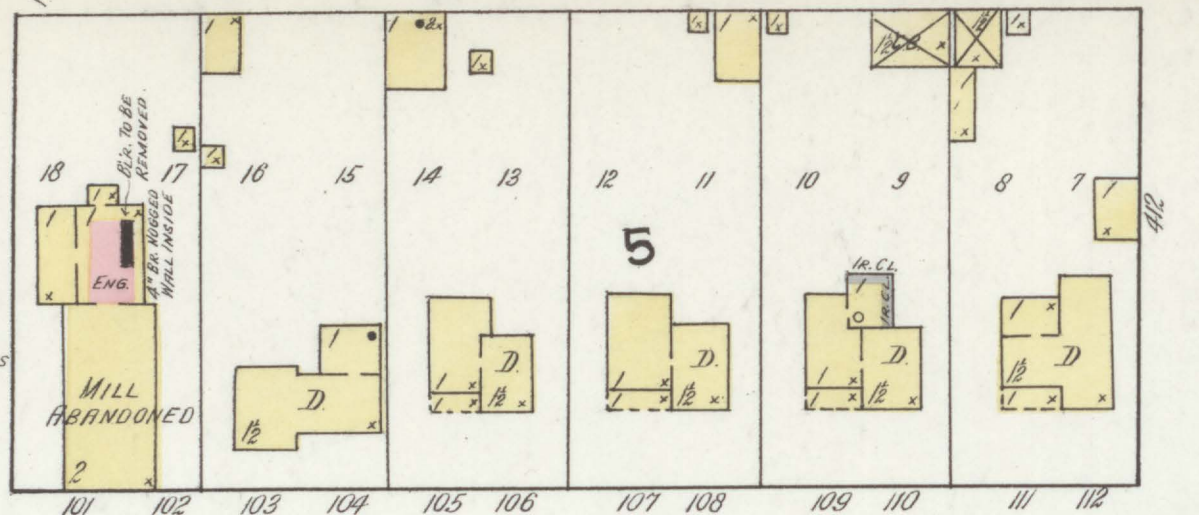
- FIRE WALL IN ABV ROOF
- METAL CORNICE
- FIRE WALL IN ABV ROOF
- WOOD CORNICE
- FIRE WALL IN ABV ROOF
- STANDARD
- FRAME PARTITION
- OPENING WITH IRON DOOR
- IRON DOOR
- WINDOWS & IRON SHUTTERS
- WINDOWS 1ST STORY
- WINDOWS 1ST & 2ND STORIES
- 2 1/2" & 4"

STABLE BUILDINGS COLORED YELLOW ARE FRAME
RED BRICK
BLUE STONE
GRAY IRON
BROWN FIRE PROOF

⊙ ⊙ INDICATE RELATIVE HEIGHTS
FIRE STATION AS SHOWN ON MAP
ALTERNATE STREET NUMBERS ARE ACTUAL
CONSECUTIVE STREET NOS ARE ARBITRARY



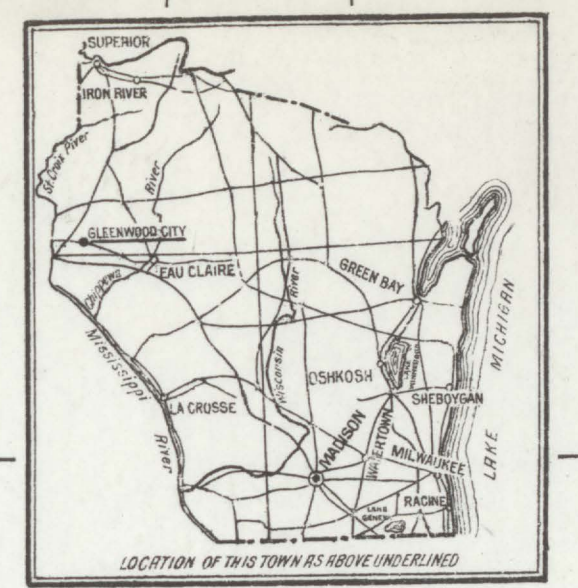
GLENWOOD FEED MILLS
NO MITCHELL, NO LIGHTS
MACHINERY
1 FEED ROLL, 1 SHELLER,
1 FEED GRINDER.



SANBORN MAP COMPANY
POPULATION 1,000
PREVAILING WINDS: N.E. & N.W.
WATER FACILITIES: SEE NOTE
NO STEAM & NO HEAVY ENGINE
ONE-HAND HOSE CART
NO HOOD & LADDER TRUCK

GLENWOOD CITY
ST. CROIX COUNTY
WISCONSIN
NOVEMBER 1912
SCALE: 50 FT. TO AN INCH
11 BROADWAY, NEW YORK

CLF 25035
DEC 24 1912



Map Division
JAN 2 1913
Library of Congress

ELM

OAK

PINE

MAPLE

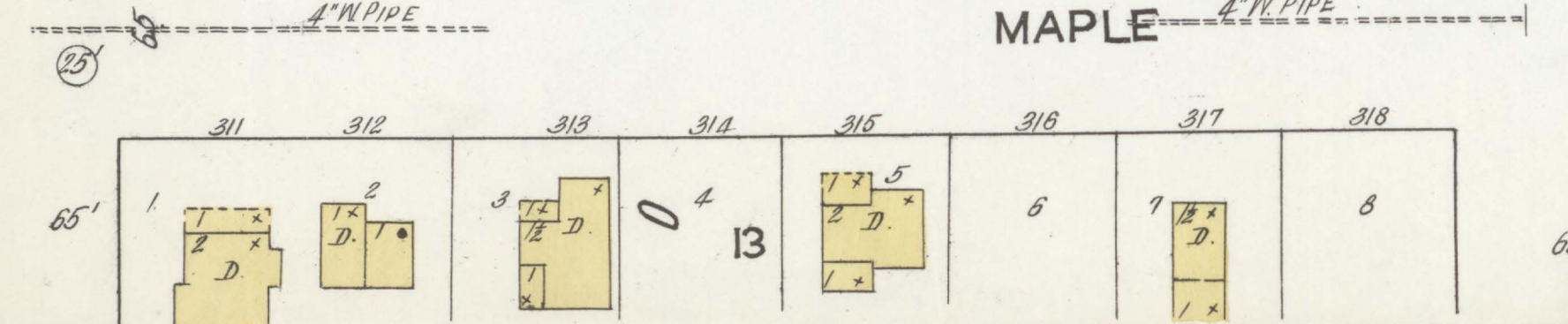
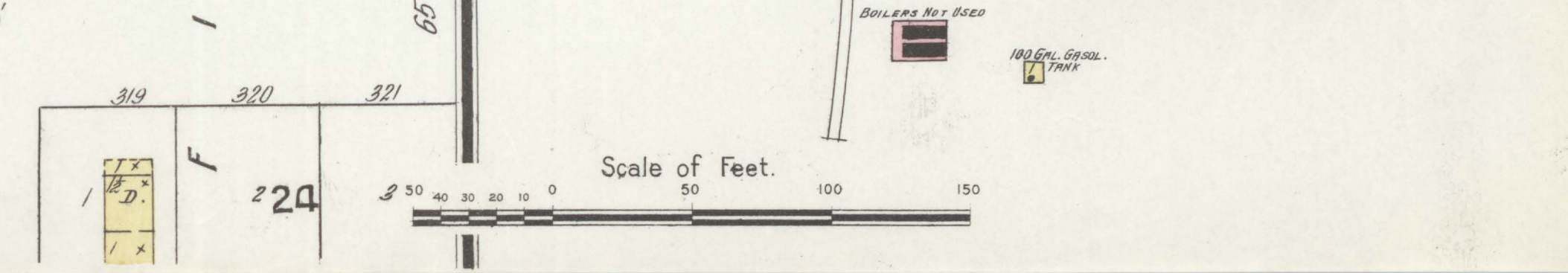
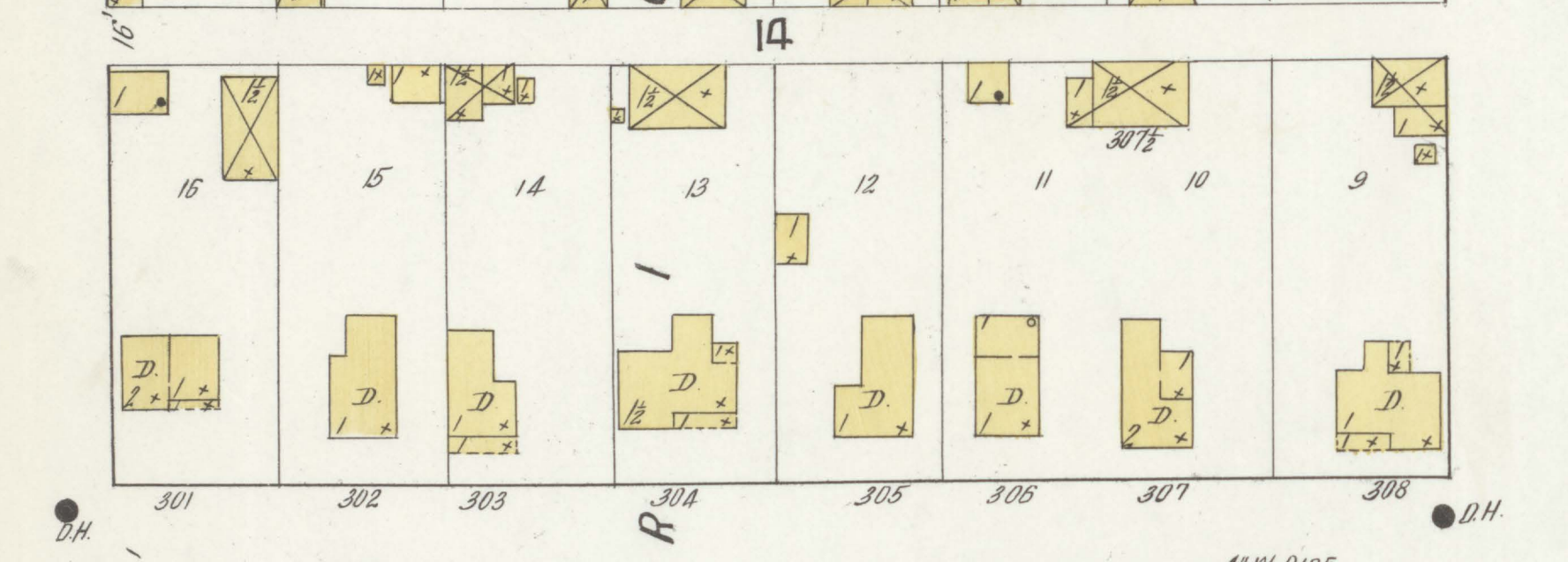
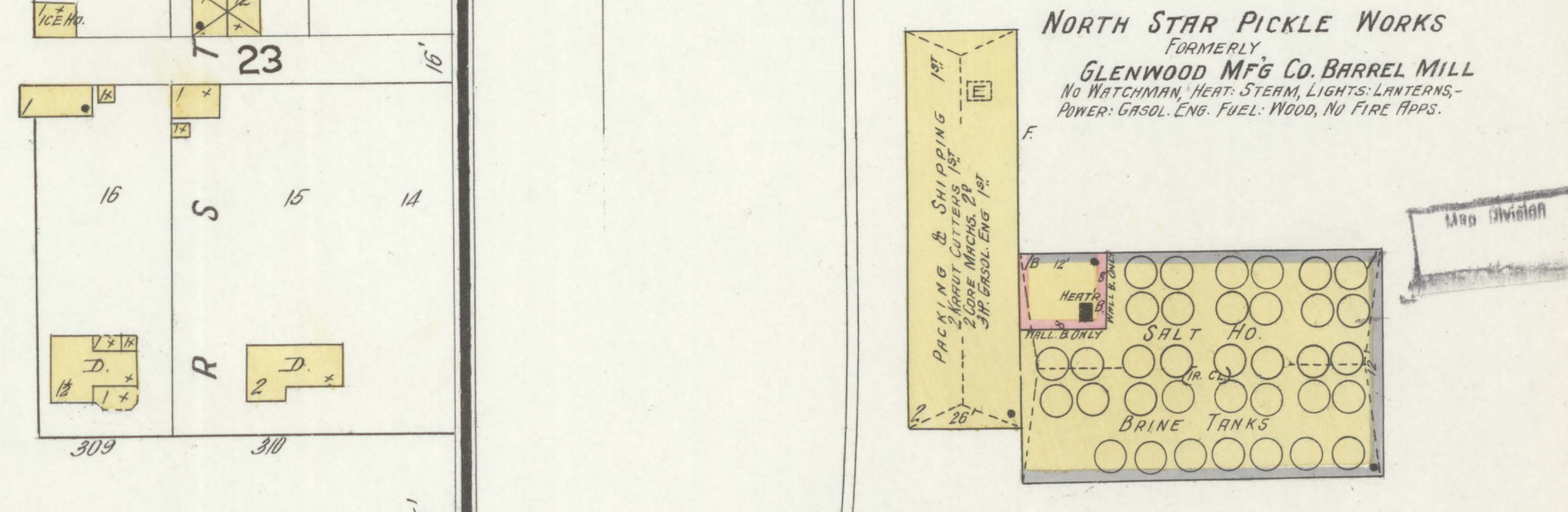
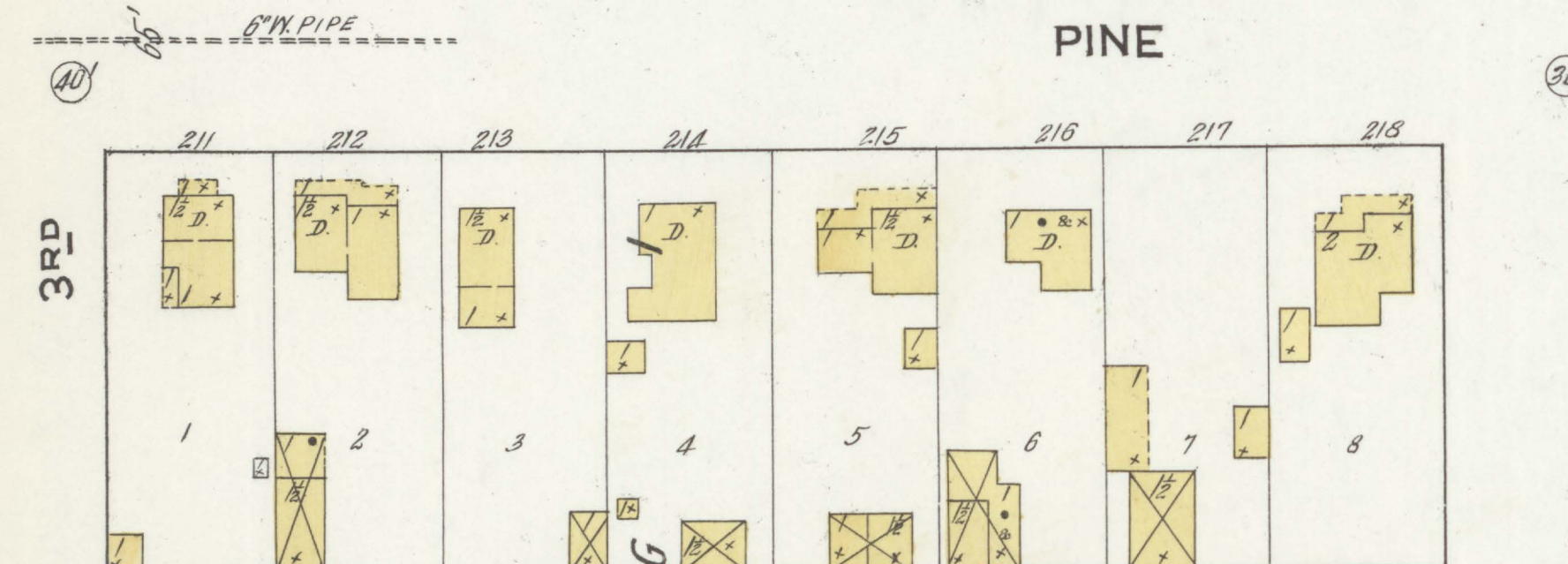
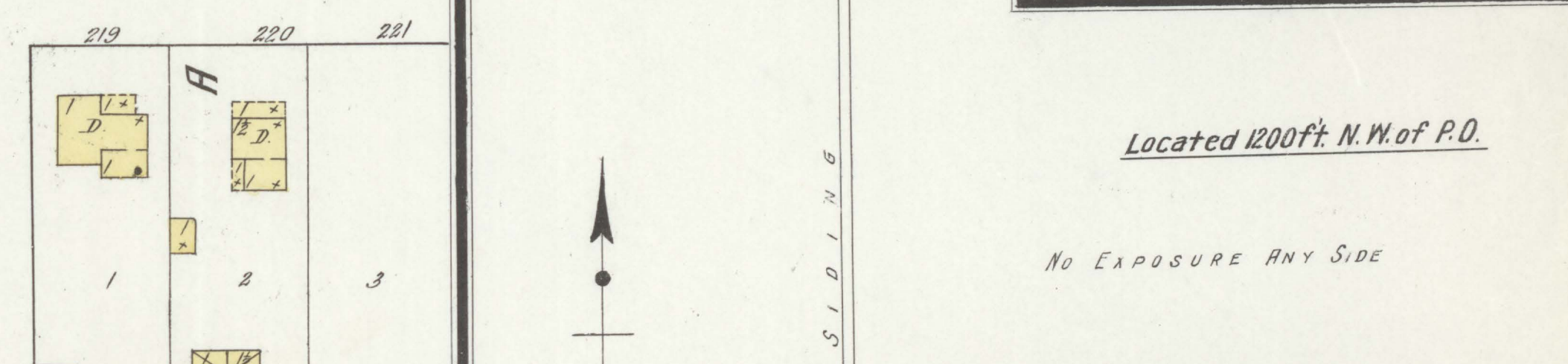
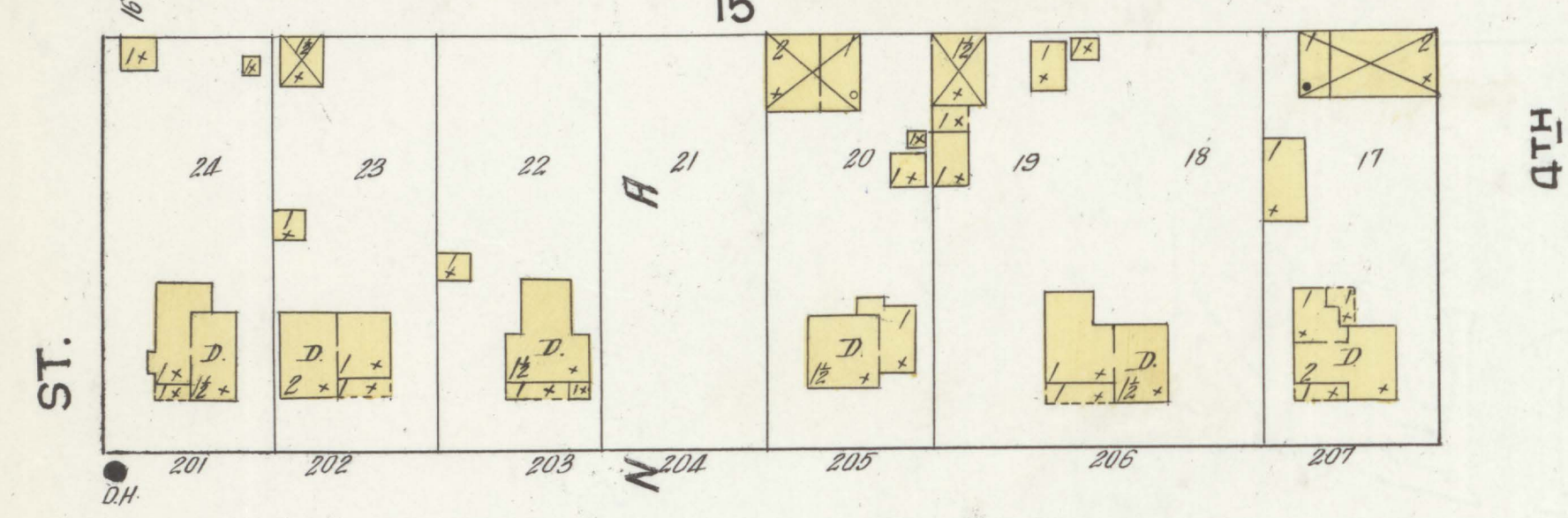
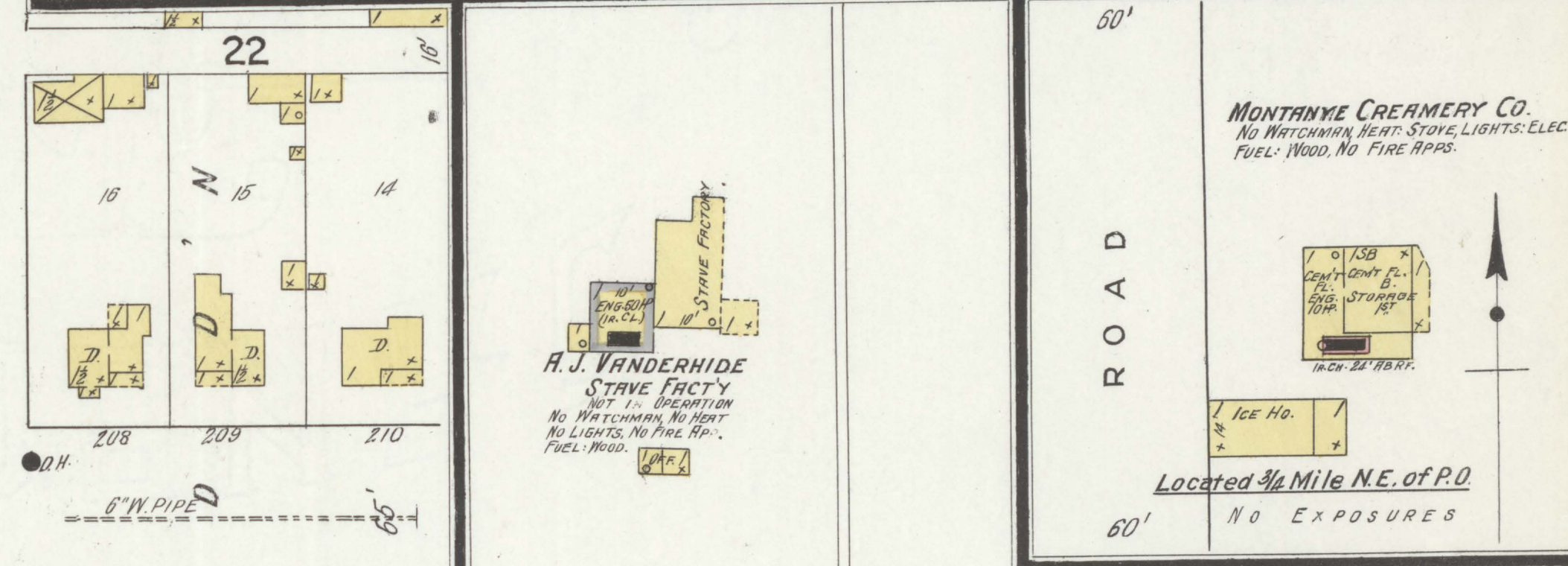
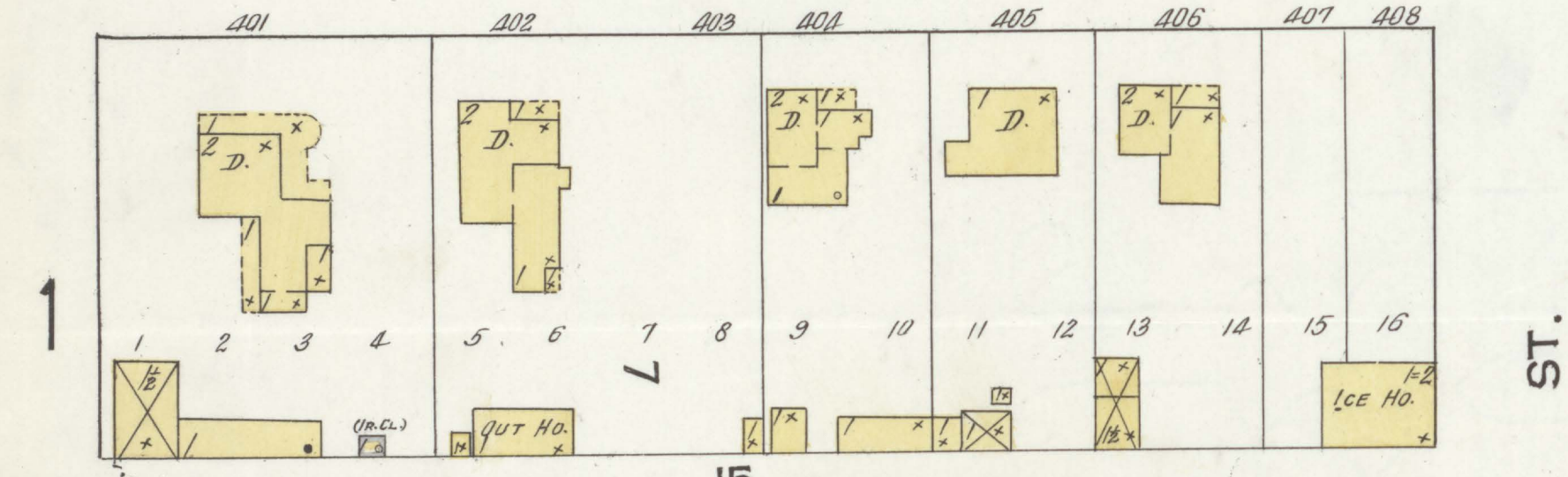
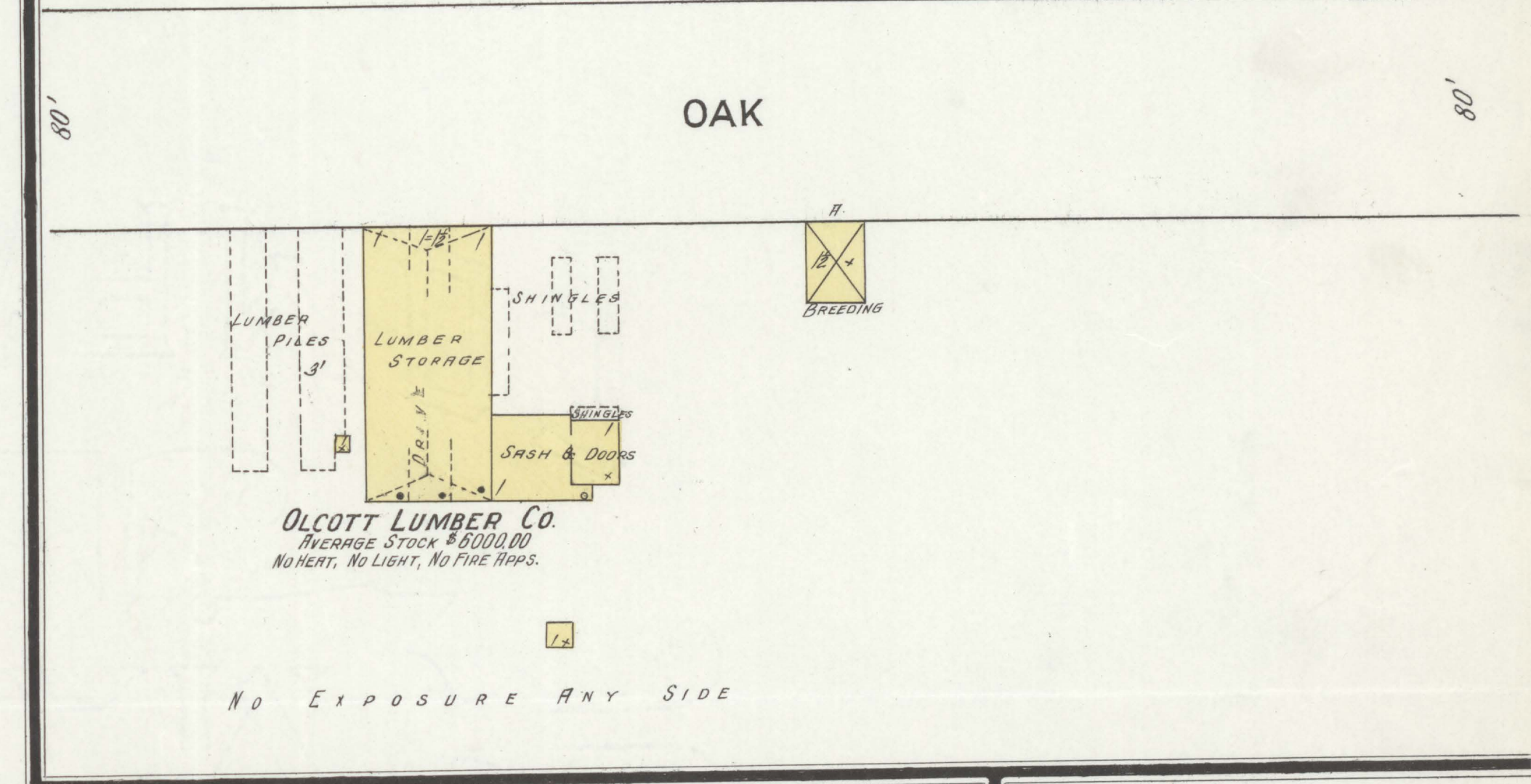
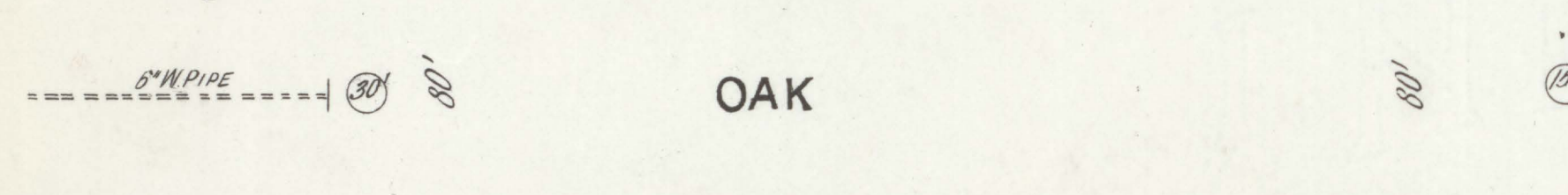
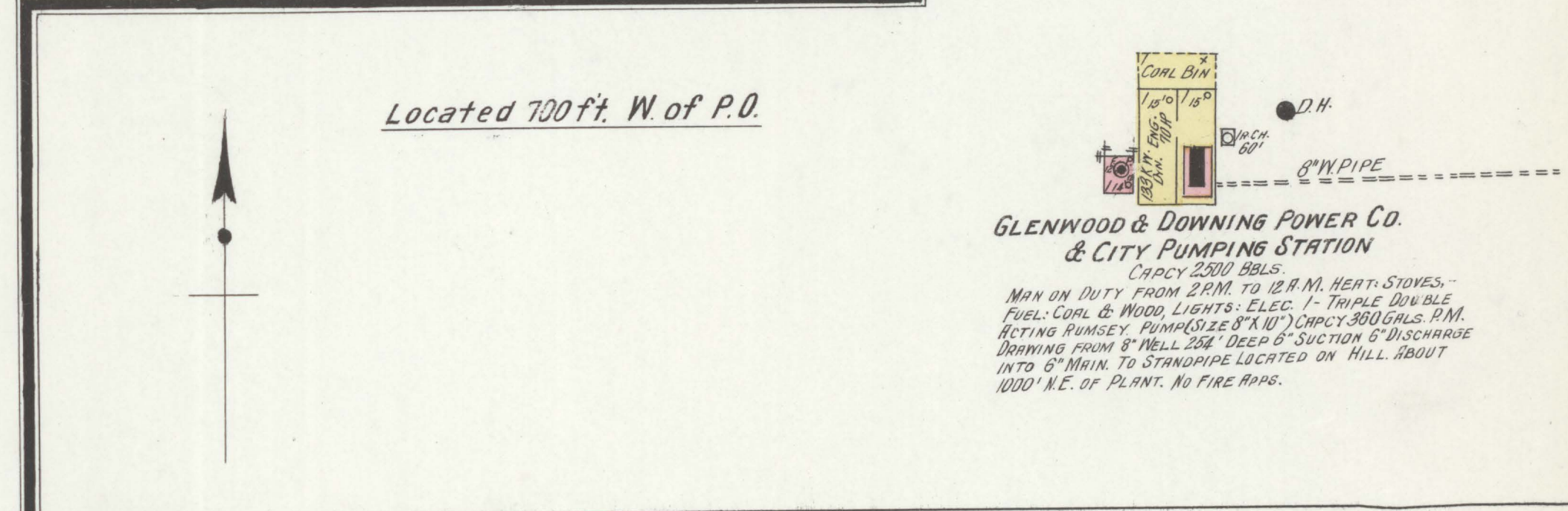
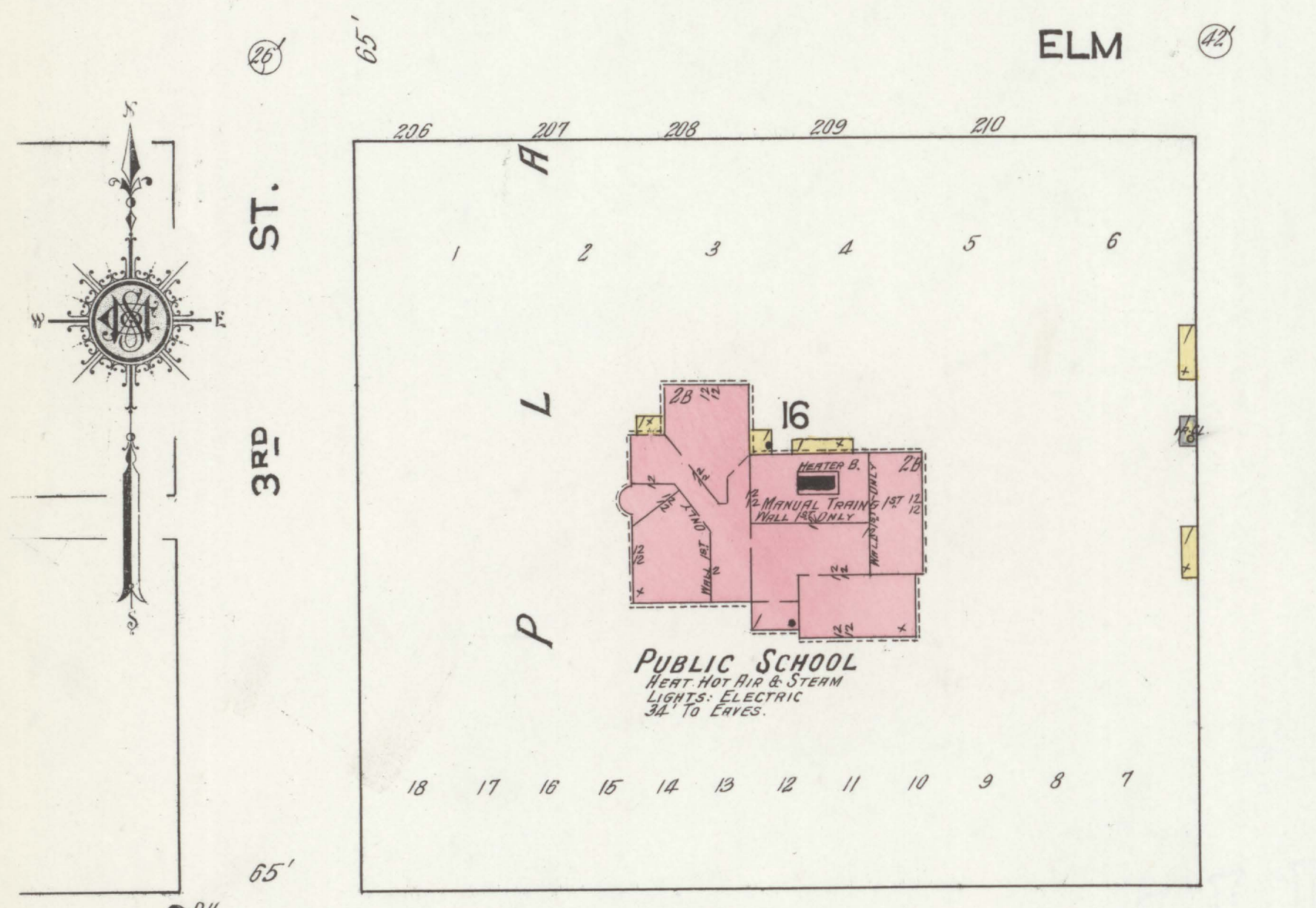
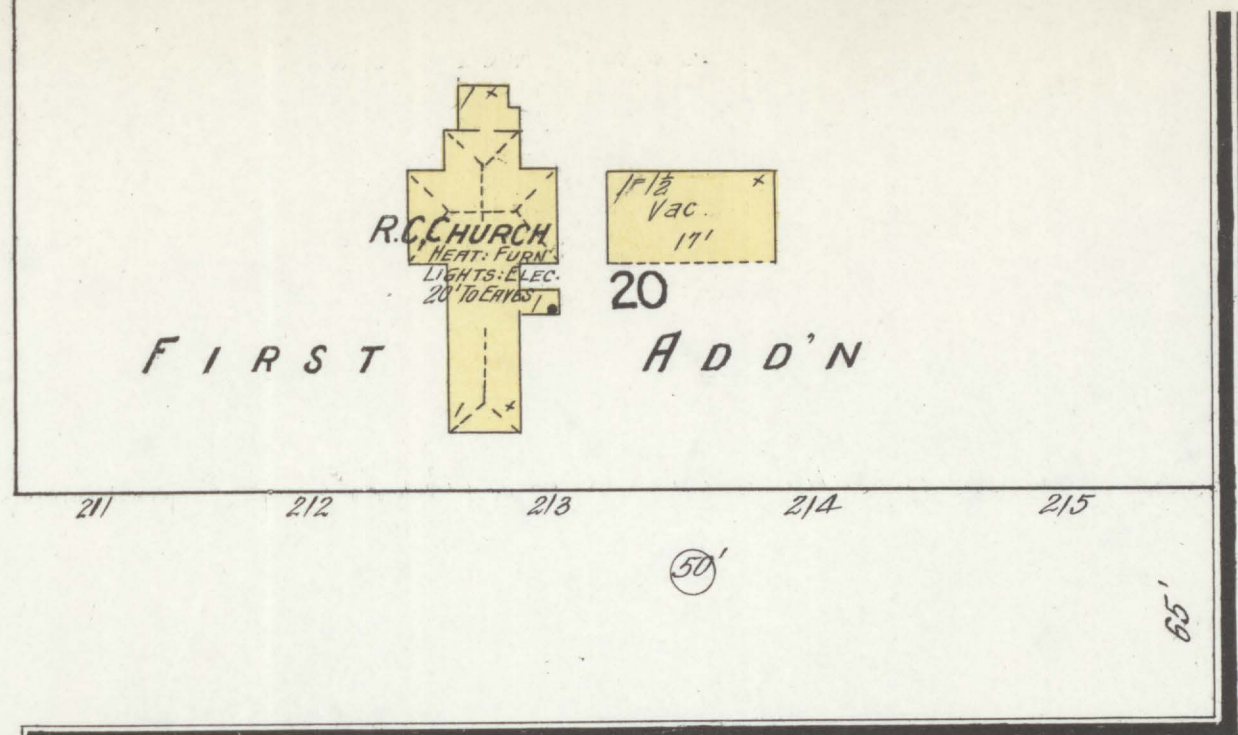
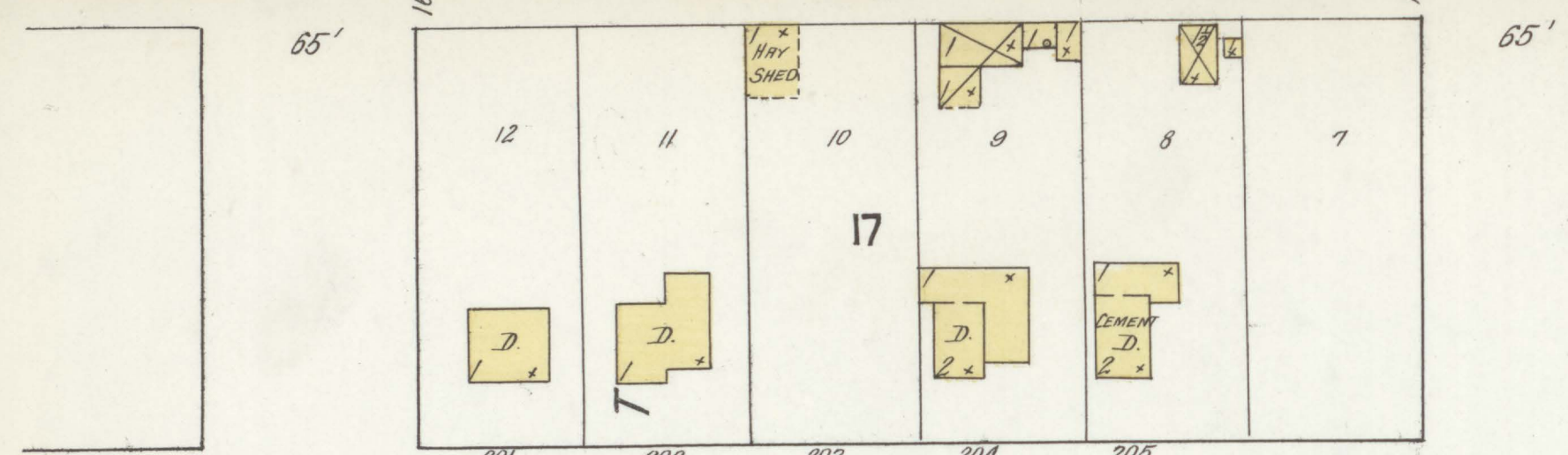
WATER FACILITIES - Gravity Pressure System, Stand Pipe Capacity, 2500 Gals. Located on Hill About 1000' N. of P.O. Base Elevation About 125' Above Business Portion of Town & Supplied by 8 Triple Double Acting Ramsey Pump (Size 8x10) Capacity, 300 Gals. Per Min. Driven from 6" Driven Well 234' Deep Having 18" Section & 1/2" Discharge. This Pump is Owned by City, but is Operated by Steamboat & Docking Power Plant which is Located About 650' N. of P.O. 17 1/2' Dia. - 250 G.P.M. - 1000' Cast Iron Main Laid 18' 1891, Average Pressure 55 Lbs. Average Daily Consumption 70000 Gals.

FIRE DEPT. - Volunteer Company Organized, 10 Members 800' 2 1/2" C.R.L. Hose in Fair Condition, 1 Hand Hose Cart - 2" 1" Open Nozzles - 40' 1 1/2" Truck Fire Alarm Bell at Base No. - No Fire Ladders - Streets Unpaved & Not Paved - Street Lighting Etc.

Scale of Feet.

Map Division

Nov. 1912
GLENWOOD CITY
Wis.



Glenwood & Downing Power Co. & City Pumping Station
CAPACITY 2500 BBL.
MAN ON DUTY FROM 2 P.M. TO 12 A.M. HEAT: STOVES - FUEL: COAL & WOOD, LIGHTS: ELEC. 1 - TRIPLE DOUBLE ACTING PUMSEY, PUMP(S) SIZE 8" X 10" CAPACITY 300 GALS. P.M. DRAWING FROM 8" WELL 25' DEEP 6" SUCTION 6" DISCHARGE INTO 6" MAIN TO STANDPIPE LOCATED ON HILL ABOUT 1000' N.E. OF PLANT. NO FIRE APPS.

Olcott Lumber Co.
AVERAGE STOCK \$5000.00
NO HEAT, NO LIGHT, NO FIRE APPS.

A.J. Vanderhide
STAVE FACTORY
NOT IN OPERATION
NO WATCHMAN, NO LIGHT
NO LIGHTS, NO FIRE APPS.
FUEL: WOOD.

Montanye Creamery Co.
NO WATCHMAN, HEAT: STOVE, LIGHTS: ELEC.
FUEL: WOOD, NO FIRE APPS.

North Star Pickle Works
FORMERLY
GLENWOOD MFG CO. BARREL MILL
NO WATCHMAN, HEAT: STEAM, LIGHTS: LANTERNS -
POWER: GASOL. ENG. FUEL: WOOD, NO FIRE APPS.

