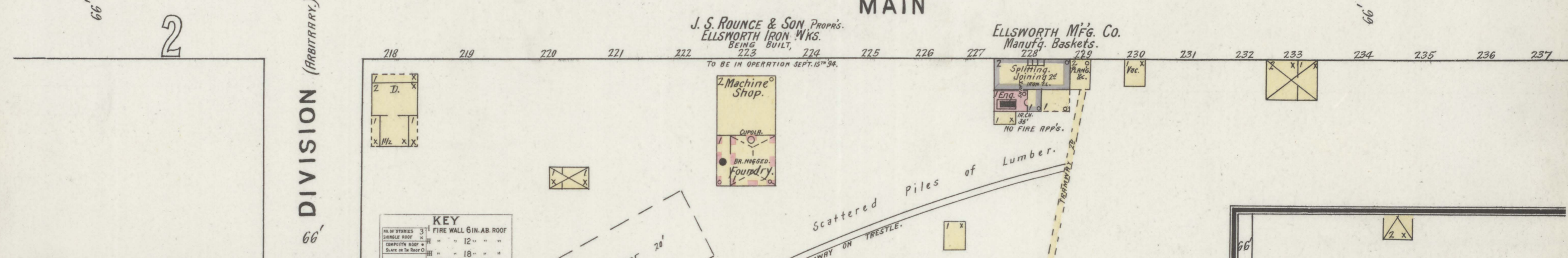
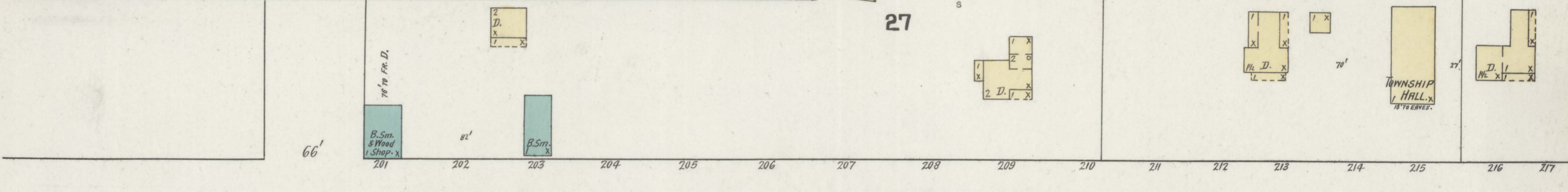
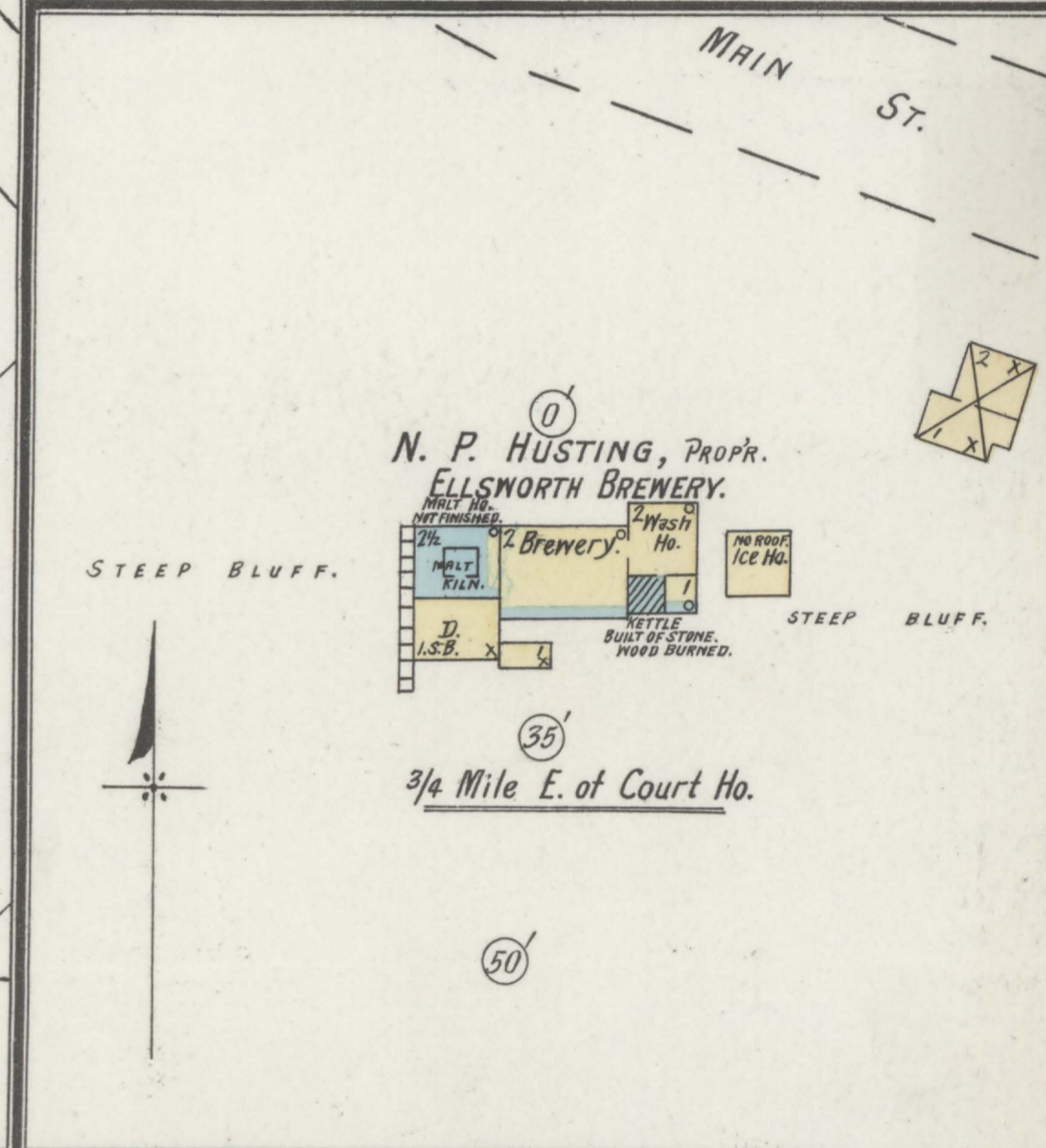




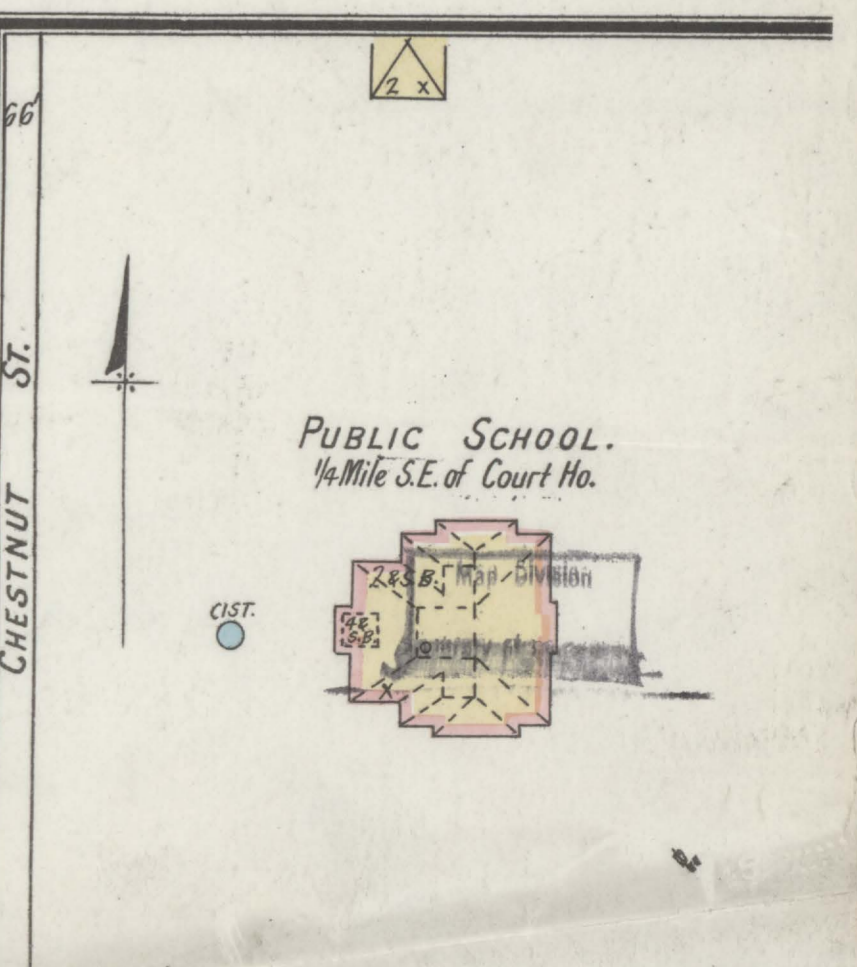
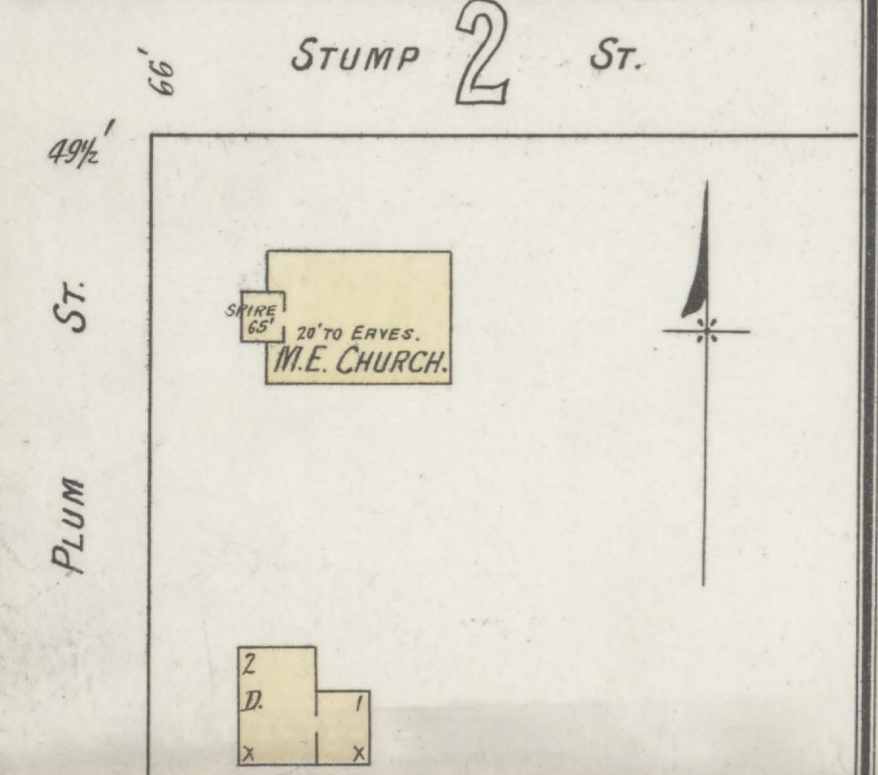
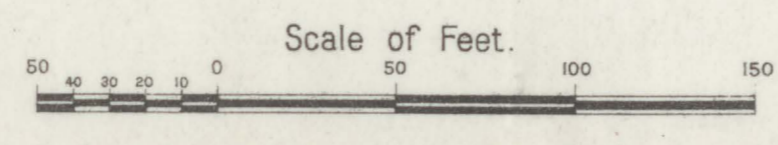
NOTE-
 VOLUNTEER FIRE DEPT. - 30 MEMBERS. WATERPROOF STEPPER, HOSE REEL, 1000' HOSE, H. & L.
 TOPOGRAPHY - THE COURT NO. IS LOCATED AT A HIGH POINT & THE LAND SLOPES DOWNWARD FROM IT IN ALL DIRECTIONS - BUT PRINCIPALLY TO THE EAST. THE TRACKS OF THE C. ST. P. M. & O. R. R. ARE ABOUT 150' BELOW THE COURT NO.
 A PUBLIC CISTERNE, 1 LARGE WELL S. W. CORNER STUMP & ORK STREETS.

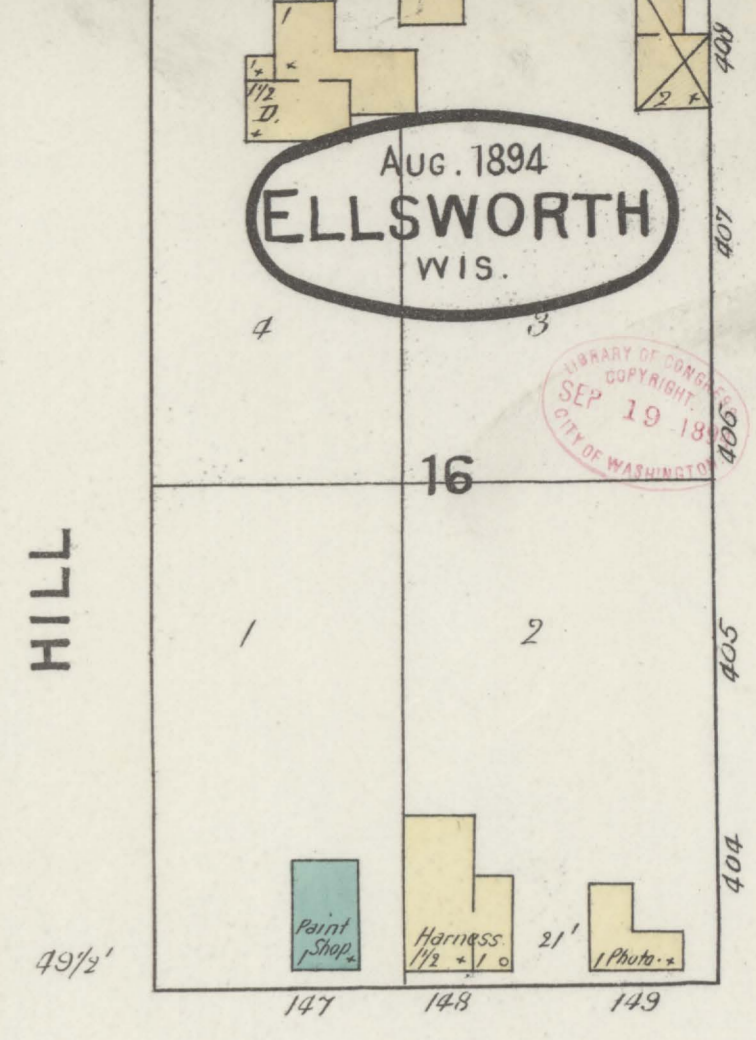
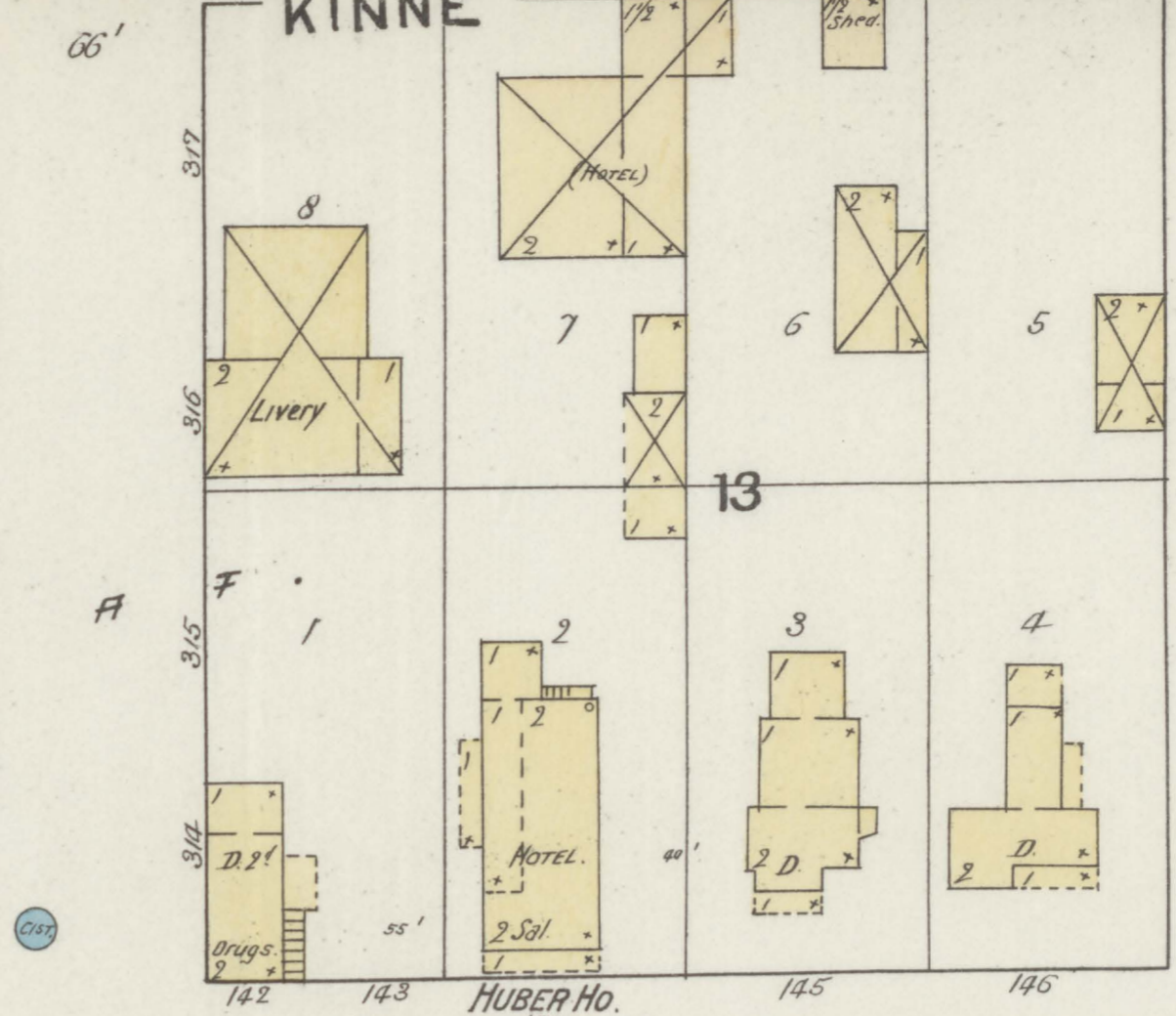
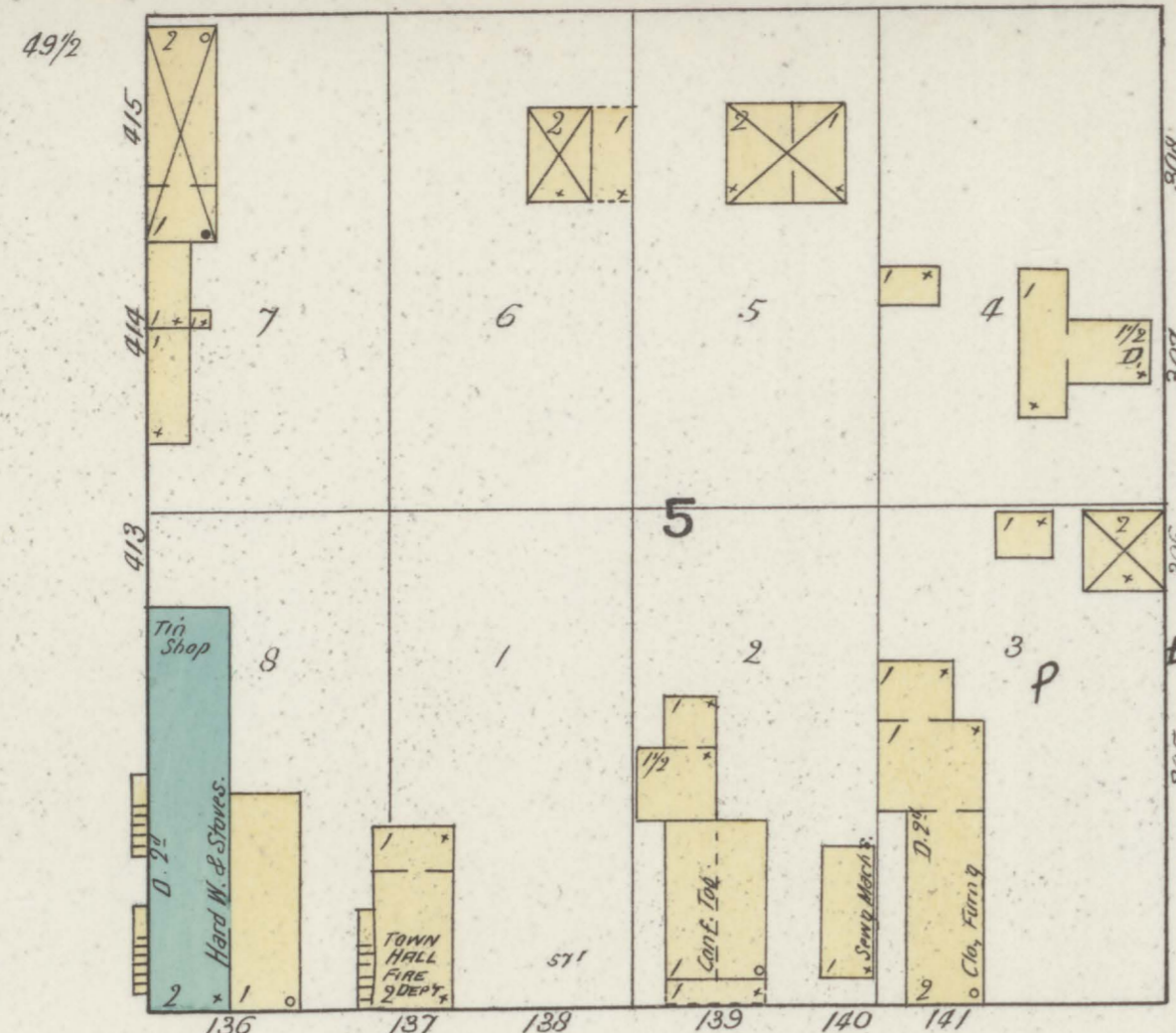
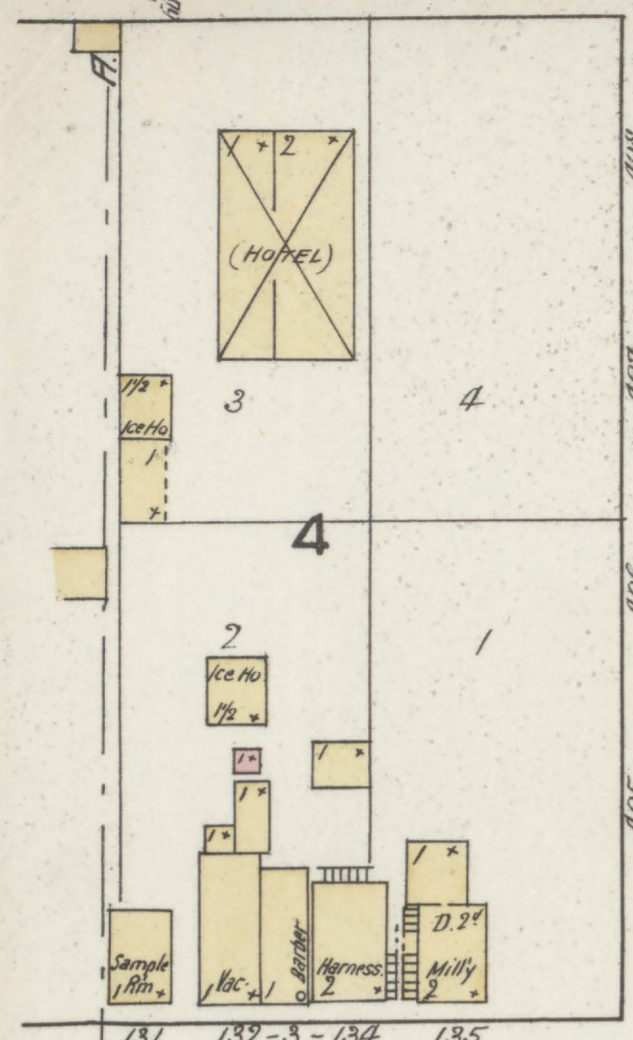


KEY

ALL OF STORIES	12"	FIRE WALL 6 IN. ABOVE ROOF
CHIMNEY ROOF	12"	CHIMNEY ROOF
SLOPE ON THE ROOF	18"	FRAME PARTITION
STEAM BOILER		OPENING & IRON DOOR
WINDOWS - SHUTTERS		WINDOWS - SHUTTERS
STABLE		WINDOW IN 1ST STORY
WINDOW IN 1ST STORY	11' & 3 1/2'	WINDOW IN 1ST STORY
	11' & 3 1/2'	
	2 1/2' & 4 1/2'	

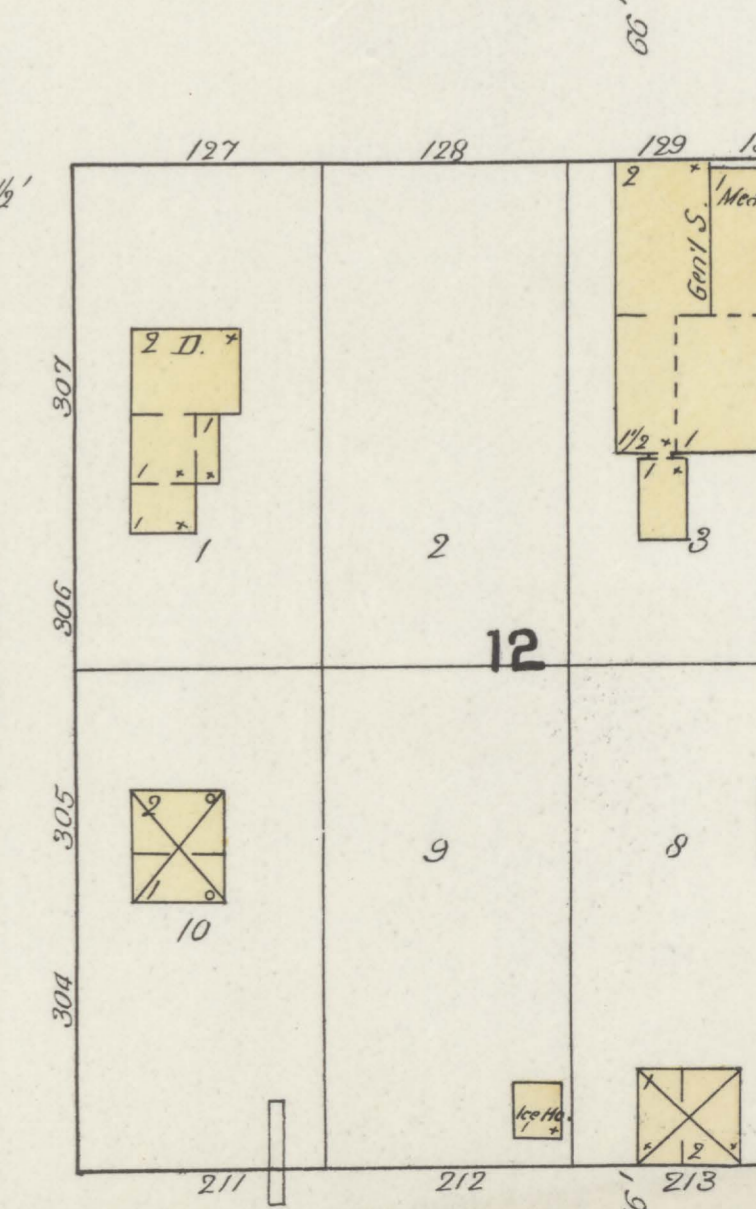
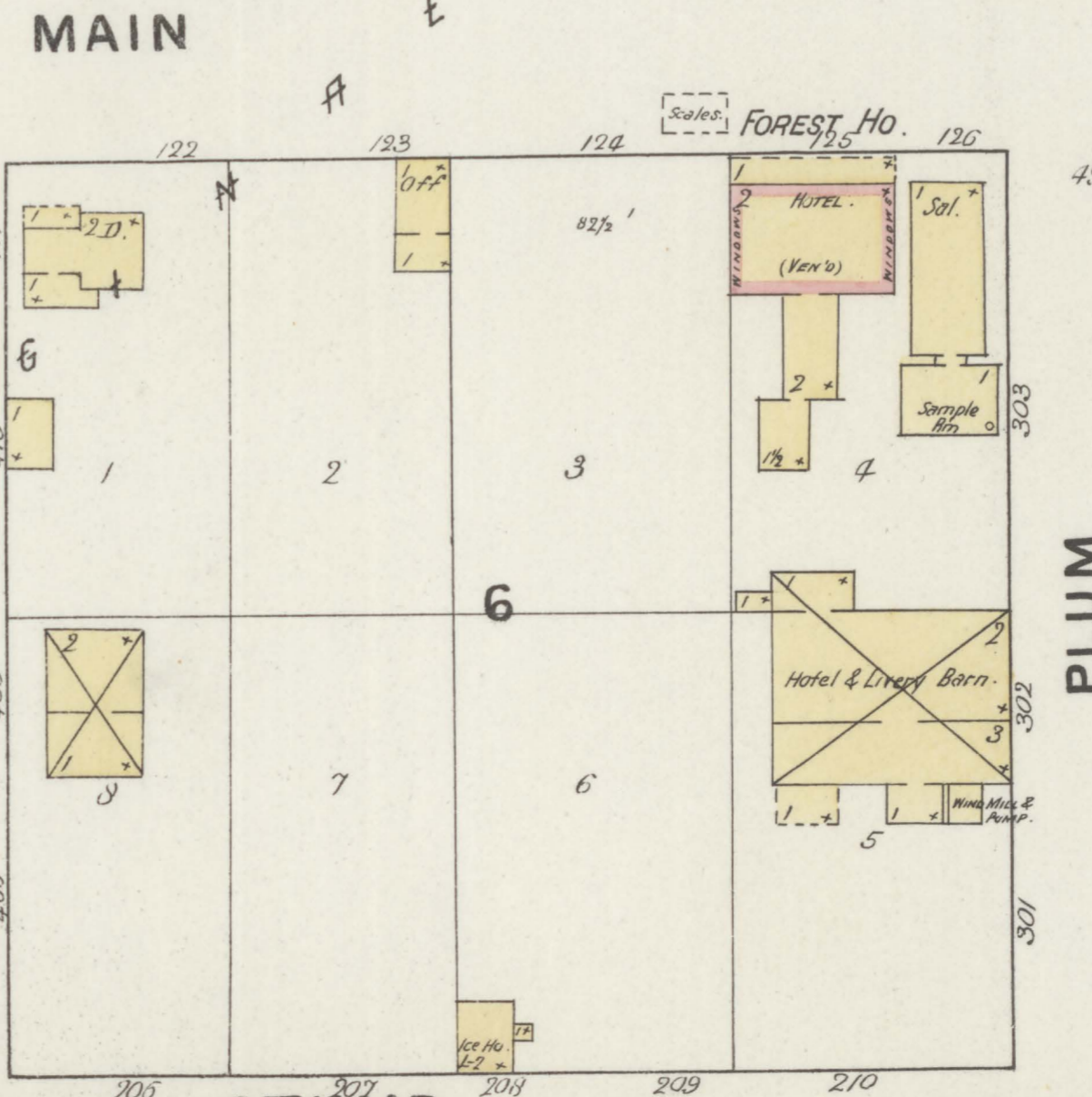
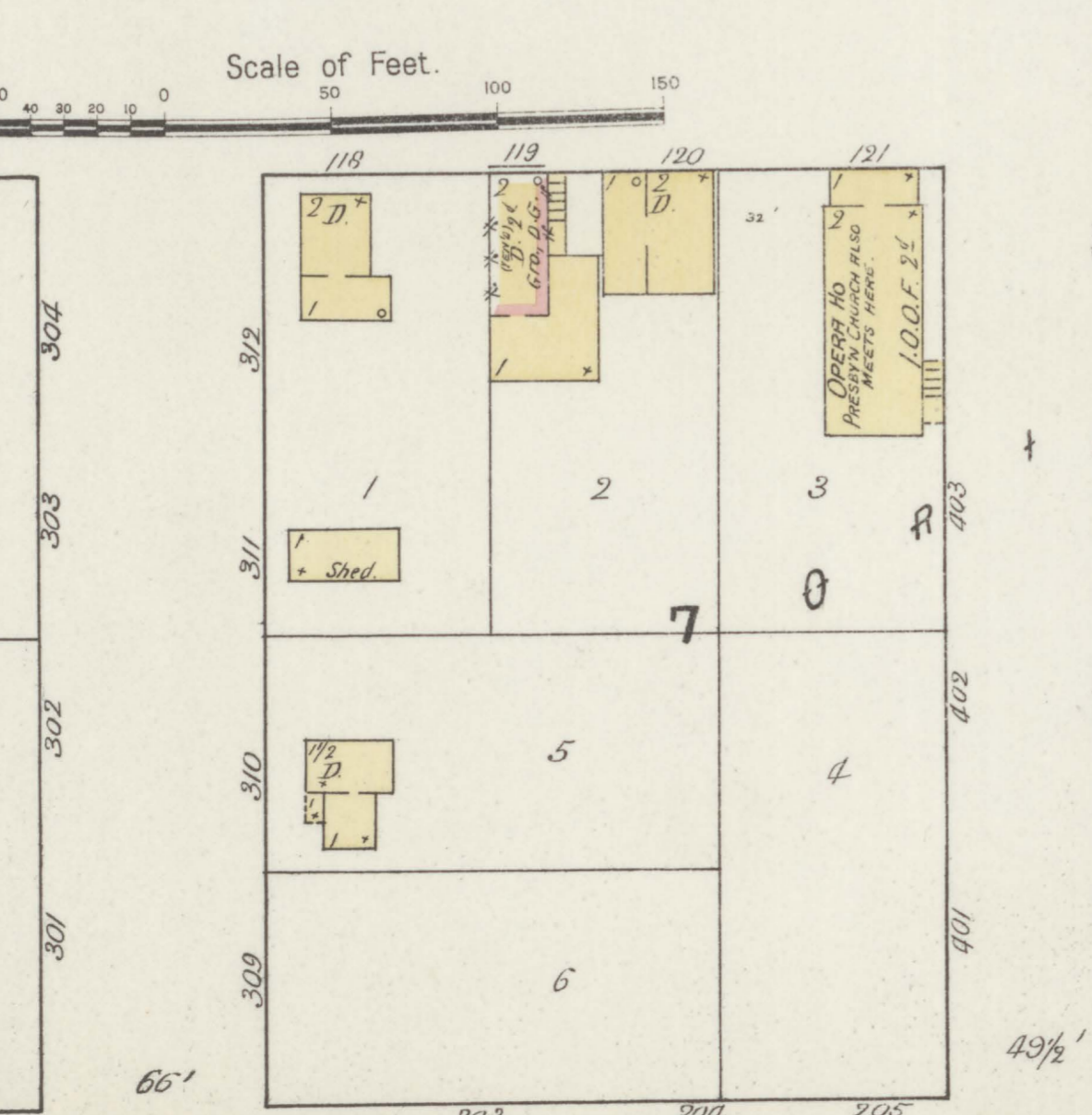
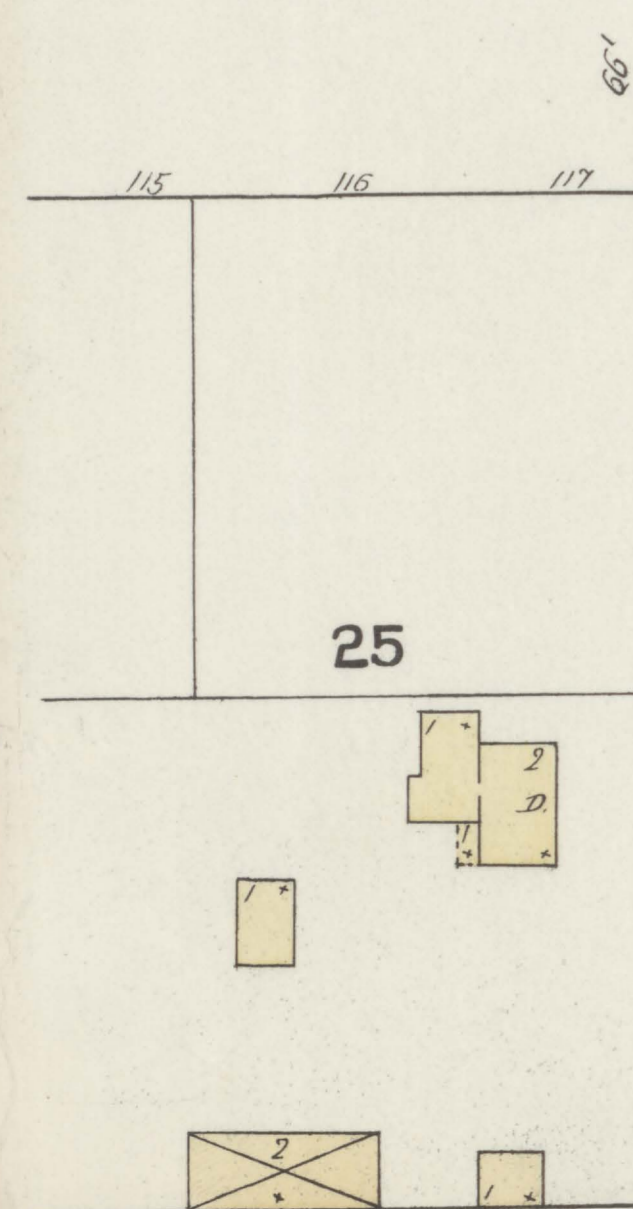
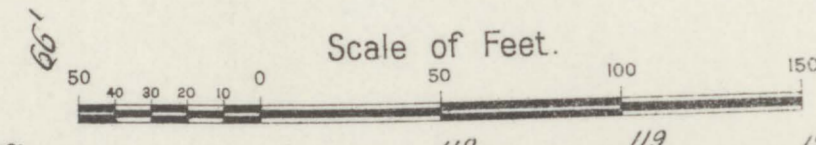
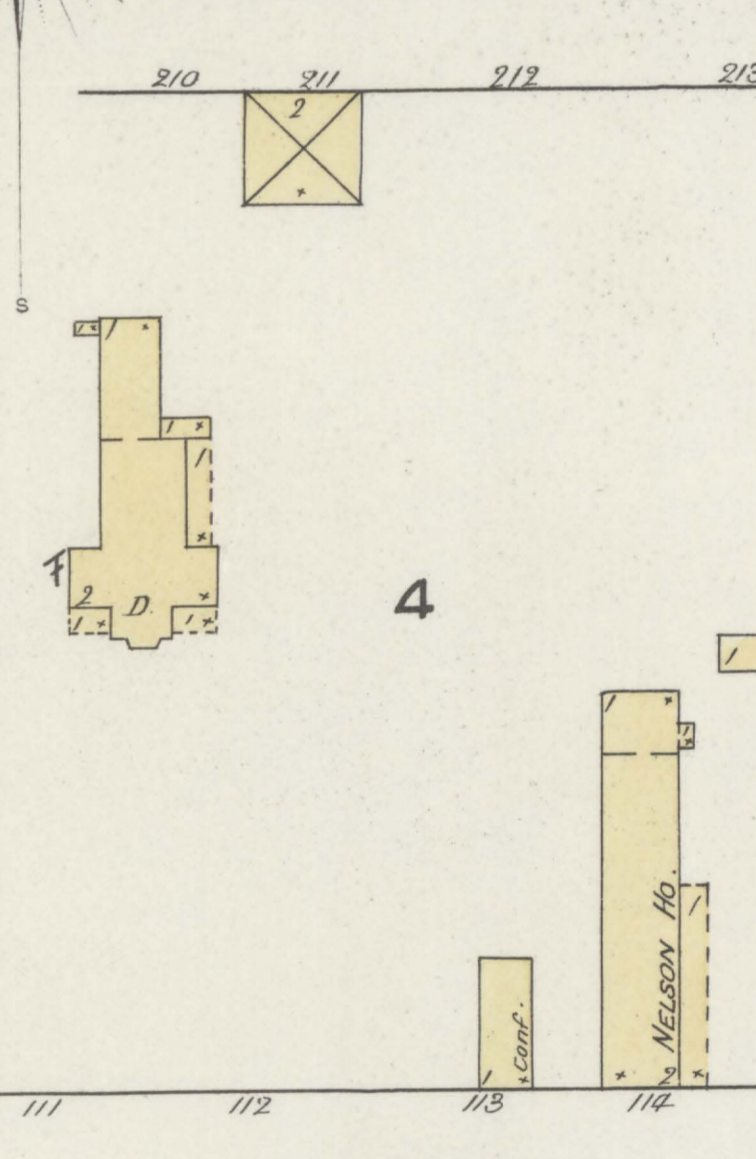
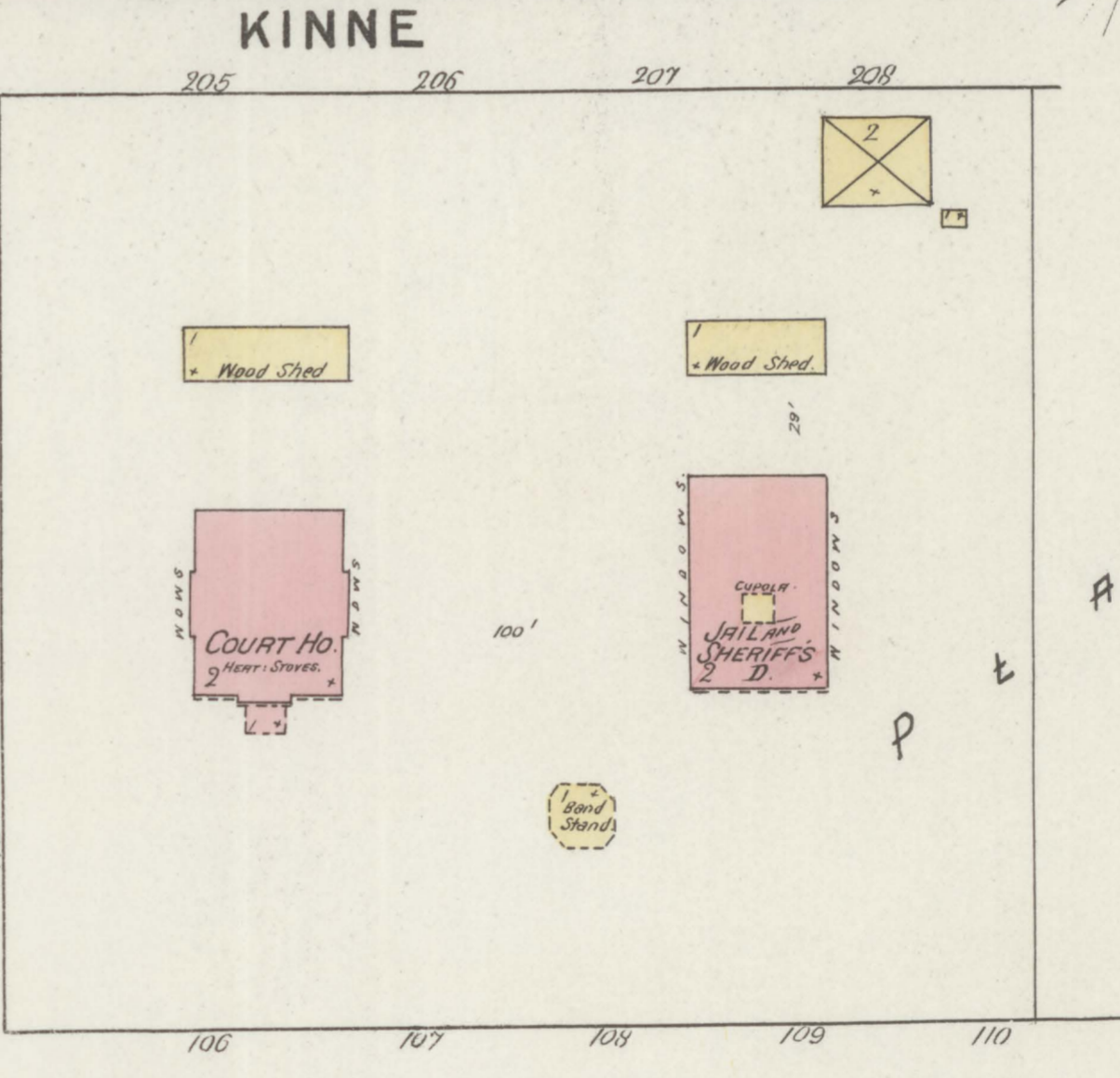
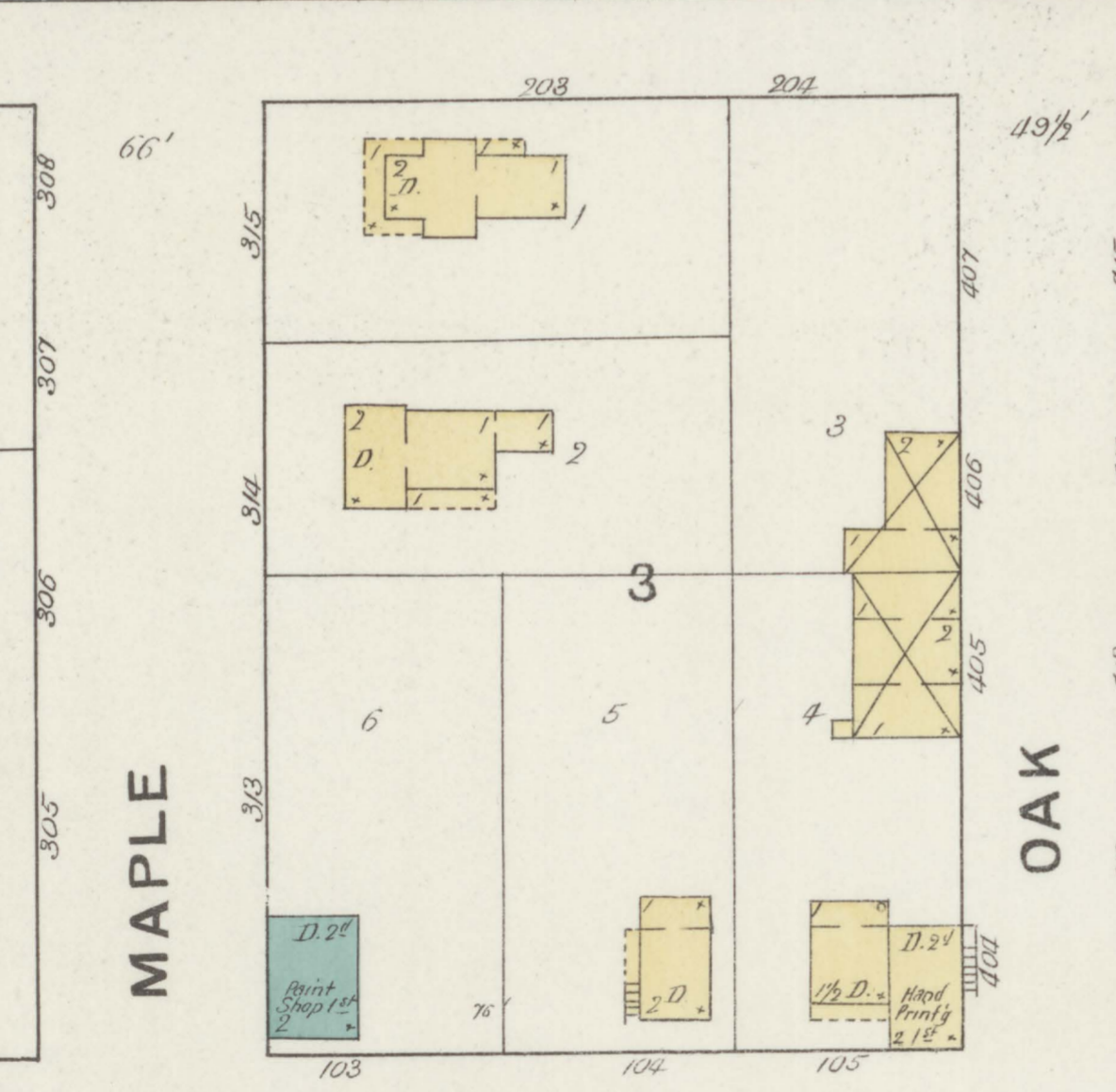
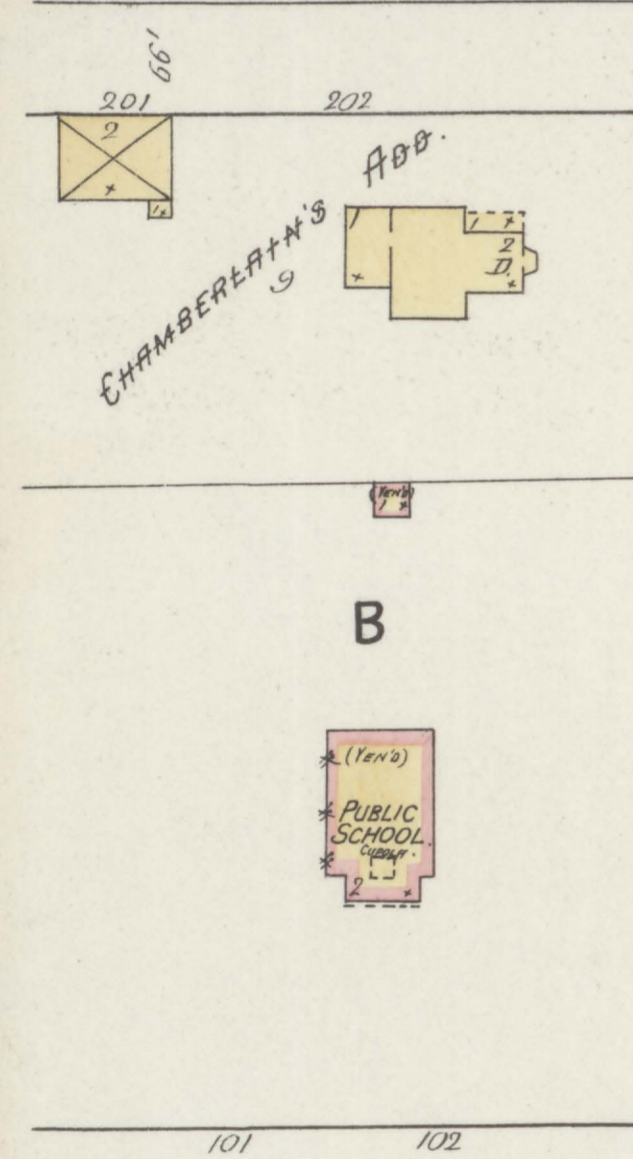
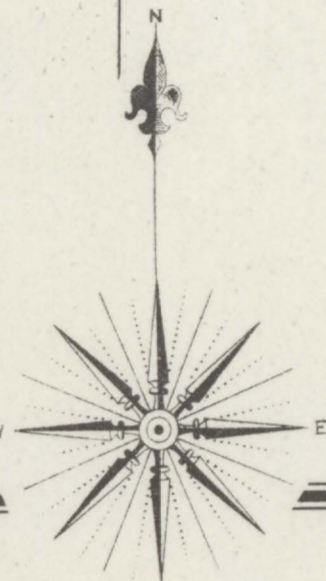
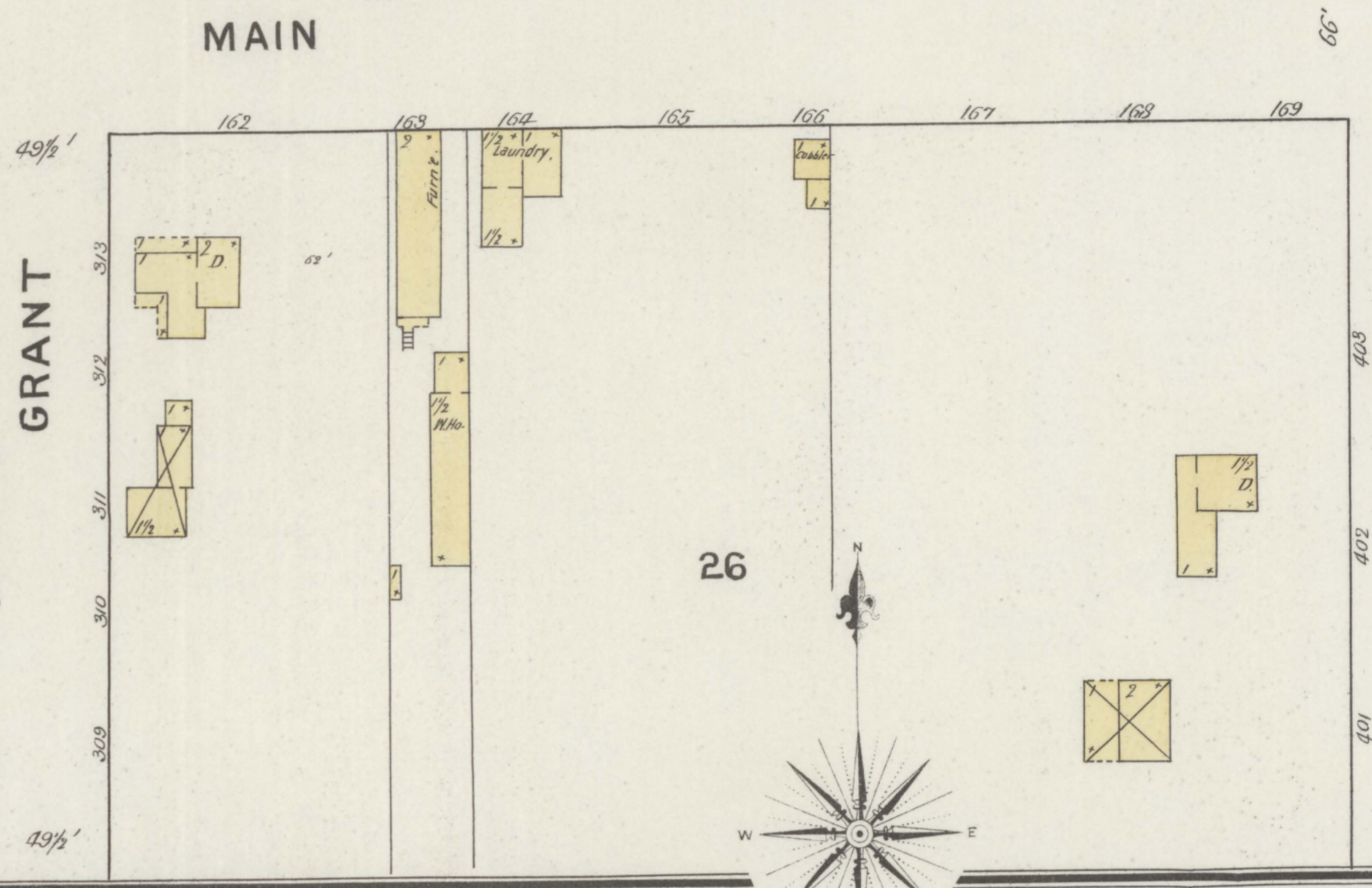
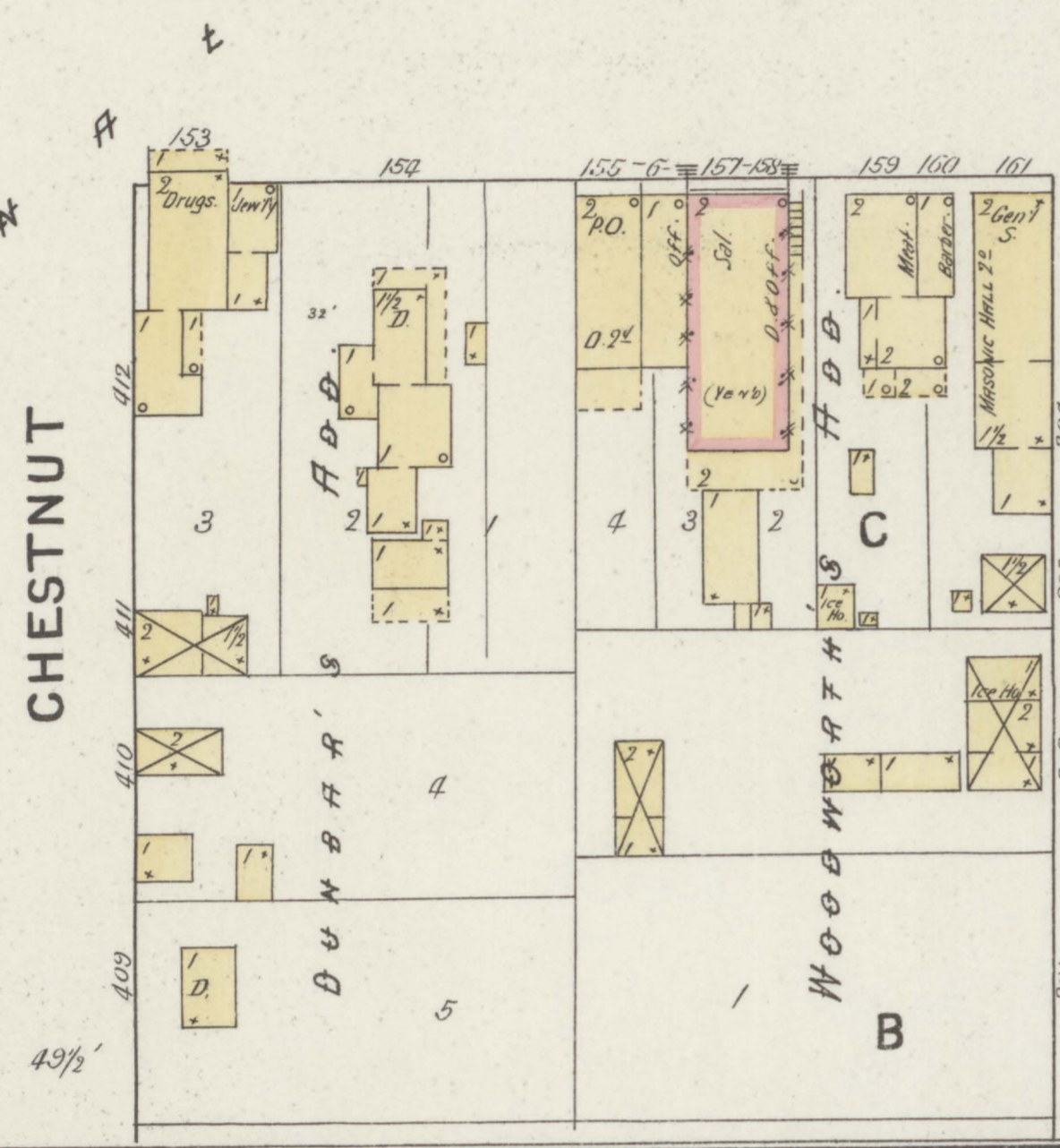
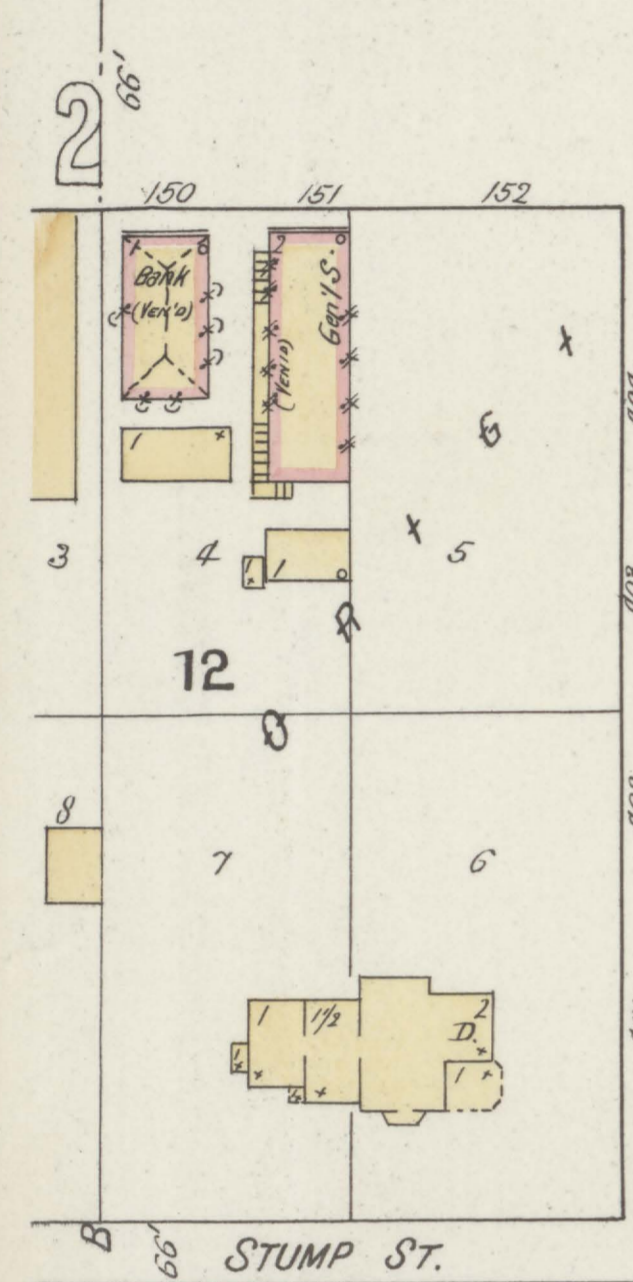
B'LG'S COLORED YELLOW ARE FRAME
 BED " BRICK
 BLUE " STONE
 GREY " IRON
 BROWN " ADOBE
 GREEN " SPECIALS
 MARKED (X) ARE CLOTH LINED
 (C) INDICATE RELATIVE HEIGHTS
 ALTERNATE STREET NOS ARE ACTUAL
 CONSECUTIVE " " " ARBITRARY
 BROKEN LINE NEAR B'LDG - WOOD CORNICE
 SOLID " " " METAL





AUG. 1894
ELLSWORTH
 WIS.

LIBRARY OF CONGRESS
 COPYRIGHT
 SEP 19 1894
 OFFICE OF THE DISTRICT OF COLUMBIA



2

2

2

B.