



WATER FACILITIES:

Direct & gravity pressure system, municipal ownership. Pumping station located on Kinnickinnic River 1/2 mile SW of P.U. - 1 triple, single acting Gould F.P. 6"x8" capacity, 240 gals. per min. Drawing from an Artesian well 800 deep with 6" discharge. Said pump driven by a 30 hp elec. motor, belt conn. also an auxiliary pumping station located on Kinnickinnic River about 1/4 mile NW of P.U. - 1 Fairbanks-Morse duplex pump 4" x 9" x 15" capacity, 1000,000 gals. per diem. Drawing from two 8" wells & supplying city & reservoir through 8" main. Reservoir located about 1/2 mile NW of P.U. capacity, 192,000 gals. & elev. 120 above business portion of town, about 2037' 10" 3' 645' 8" 11322' 6" & 9330' 4" east iron mains, original mains were laid in 1884 & added to in 1903 & 1911. Average pressure 80 lbs. Fire pressure with auxiliary pumping station 90 lbs. Average daily consumption 200,000 gals. - 55 double hydrants.

FIRE DEPT:

Volunteer Co. organized 31 members - 2 hand hose carts - 1,500' 2 1/2" C.R.A. hose, 1000' of which is in good condition - 1 hand h.d. truck carrying 10 ladders. 2 Callahan shut-off nozzles, 3 three 1" nozzles, 1 Cooper hose leak stop. Fire alarm: bell on fire dept. ho. & telephones.

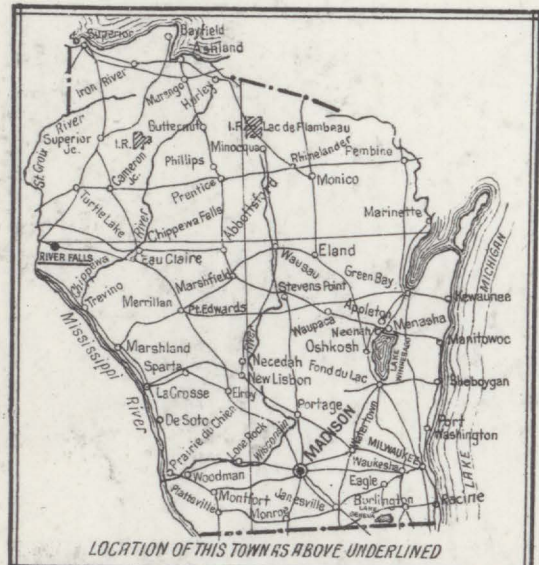
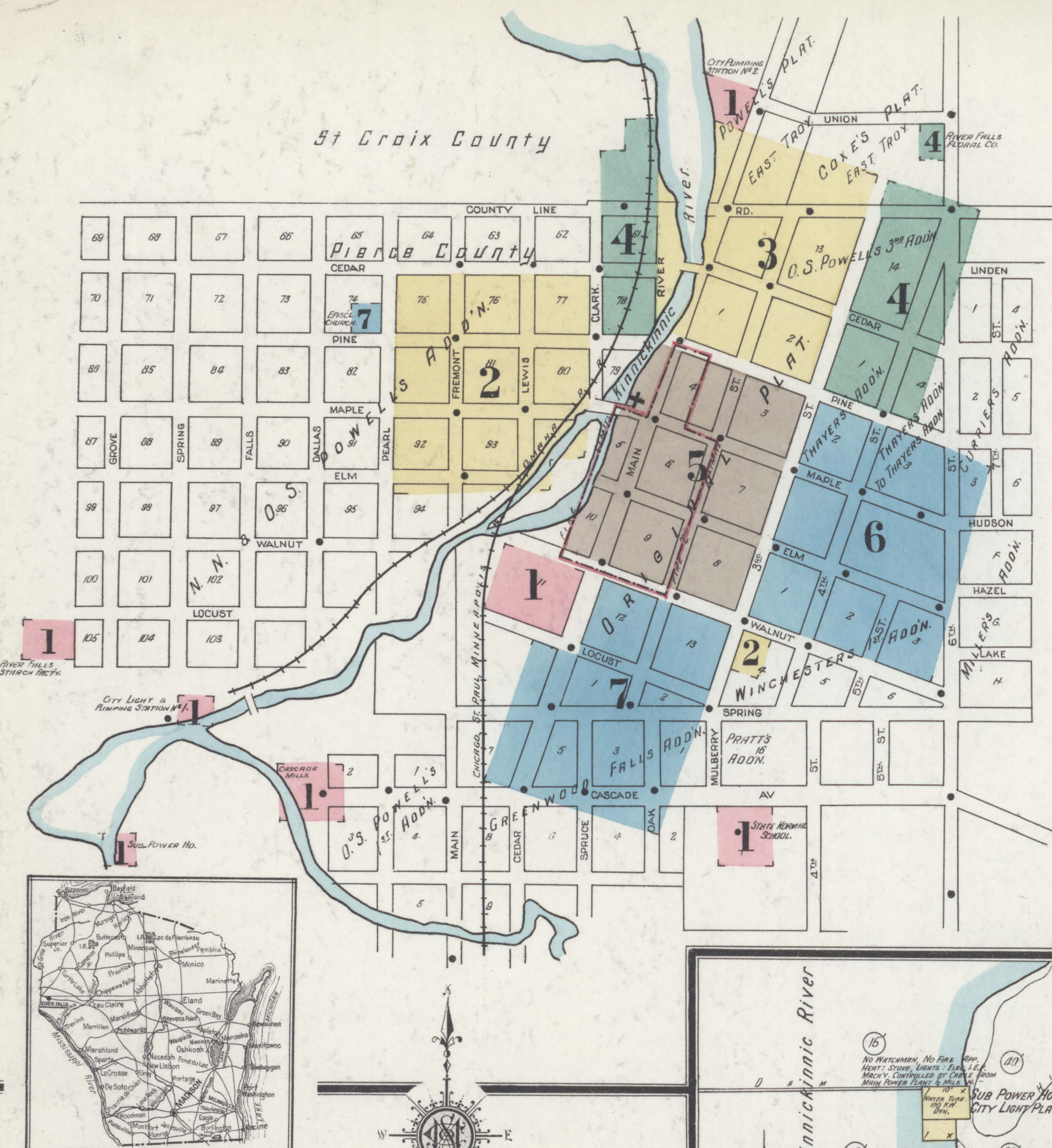
Topography: rolling streets, not paved. Public lights: 45 elec. Arc.

Note: - Water records not complete, rec. part of information verbally from Supt.

INDEX.

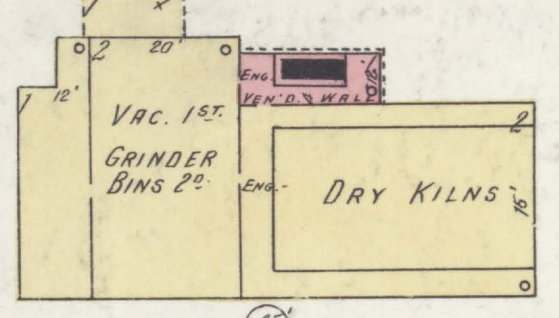
Table with columns for STREETS, SHEET, and SPECIALS. Lists various streets like Cascade Ave., Cedar, Clark, County Line Road, Dallas, Elm, Fifth, Fourth, Fremont, Lewis, Main, Maple, Walnut, and special locations like I. O. O. F. Hall, J. J. Hall, J. J. Printing Co., etc.

NOTE.—House Numbers given are arbitrary.



RIVER FALLS STARCH FACTORY NOT IN OPERATION

No Watchman, No Fire Apparatus, No Heat, No Lights, Fuel - Coal.

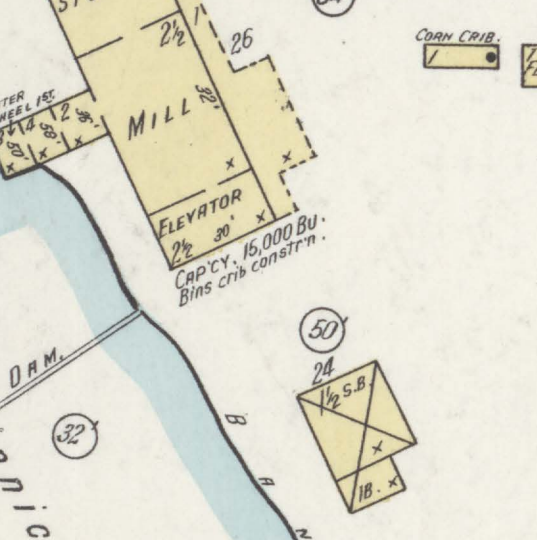


KEY: Legend for building materials and features. Includes symbols for fire wall, metal cornice, wood cornice, frame partition, opening with iron door, iron door, windows with iron shutters, window - 1st story, windows 1st & 3rd stories, 2nd & 4th, stable, buildings colored yellow are frame, red brick, blue stone, gray iron, brown adobe, green specials, and fire station symbols.

CASCADE FEED MILL

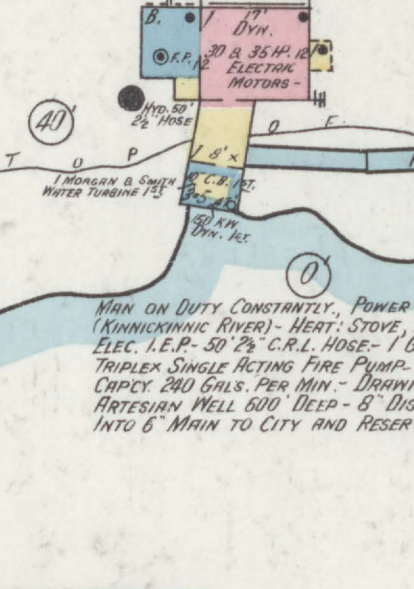
No Watchman, Heat: Stoves. Lights: Elec. Power: Water. Water Barrels Distributed.

MACHINERY: 831 - Lime Shafting, 1 Sheller, 1st - 2 Double Wheat Rolls, Not Used, 1 Corn Grinder, 1 Corn Roll, 1 Separator, 2 Centrifugal Reels, 13 Stands Elevators, 1 Scalder & Grain Bins, 1 Eulerka Separator.



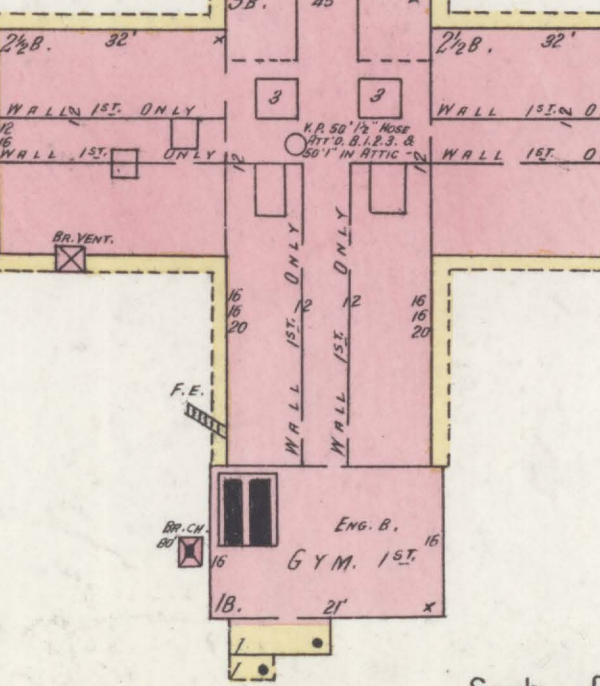
CITY LIGHT & PUMPING STATION NO. 1

No Exposure Any Side

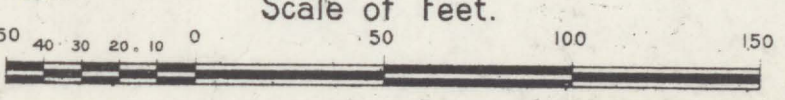


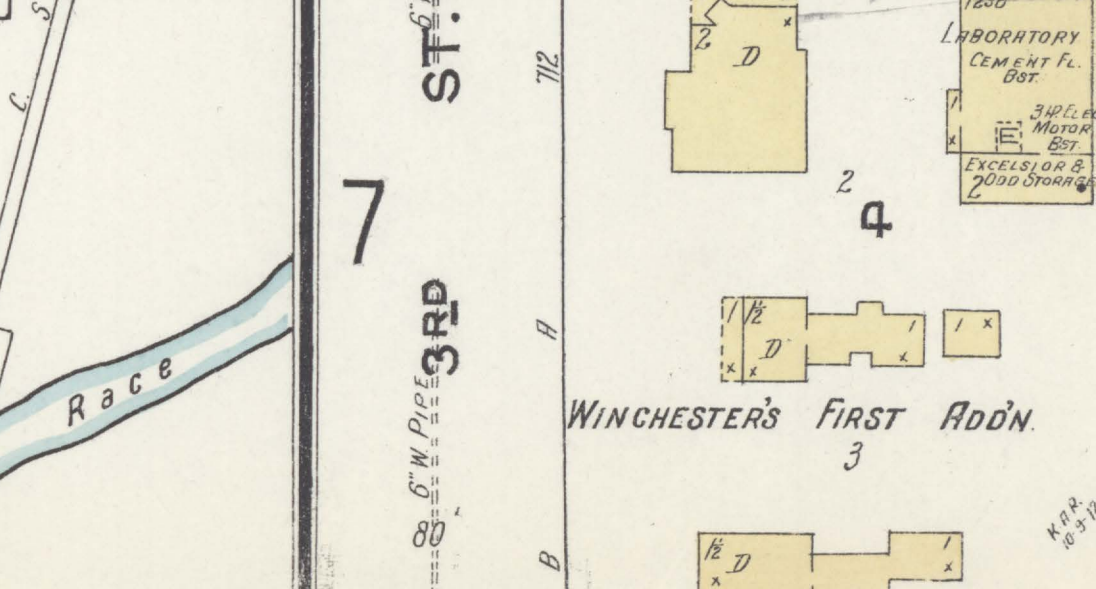
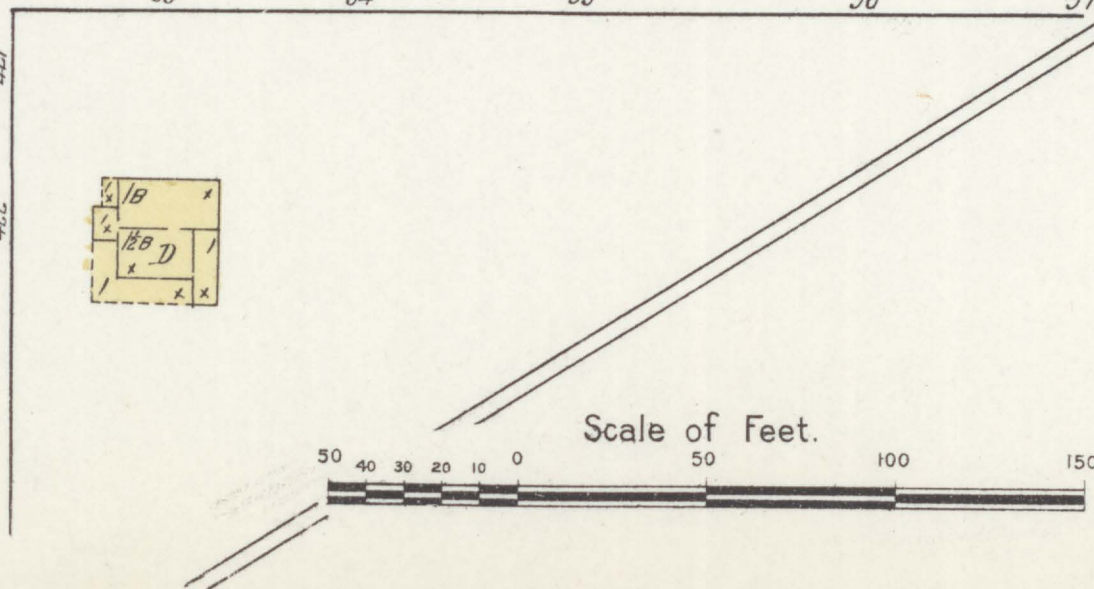
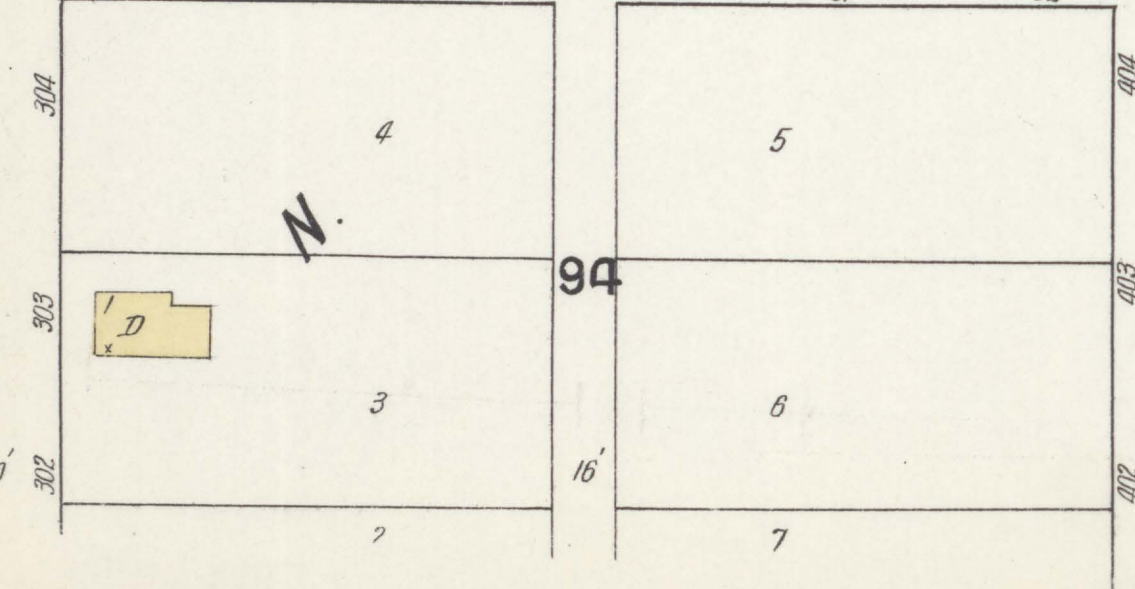
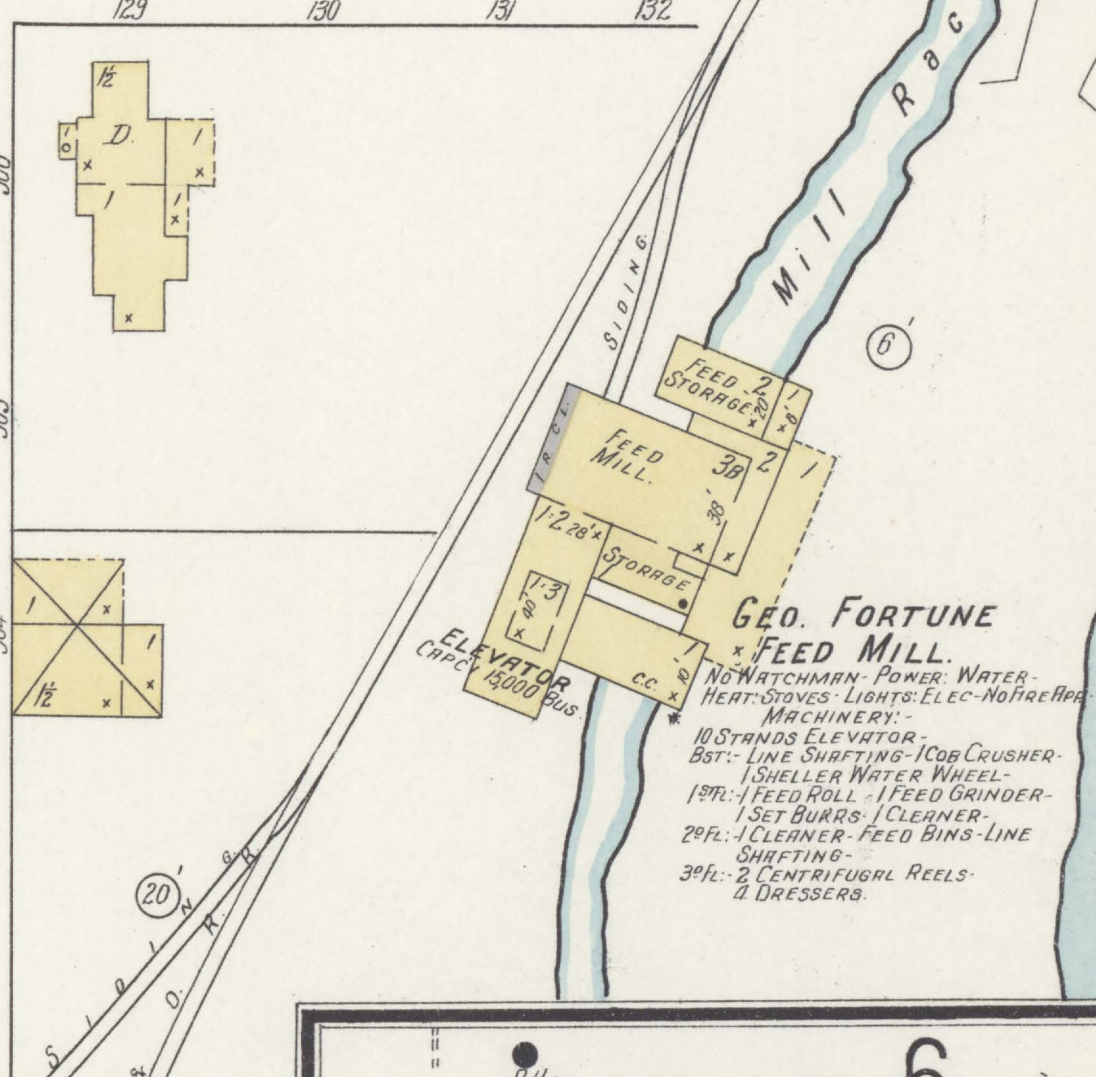
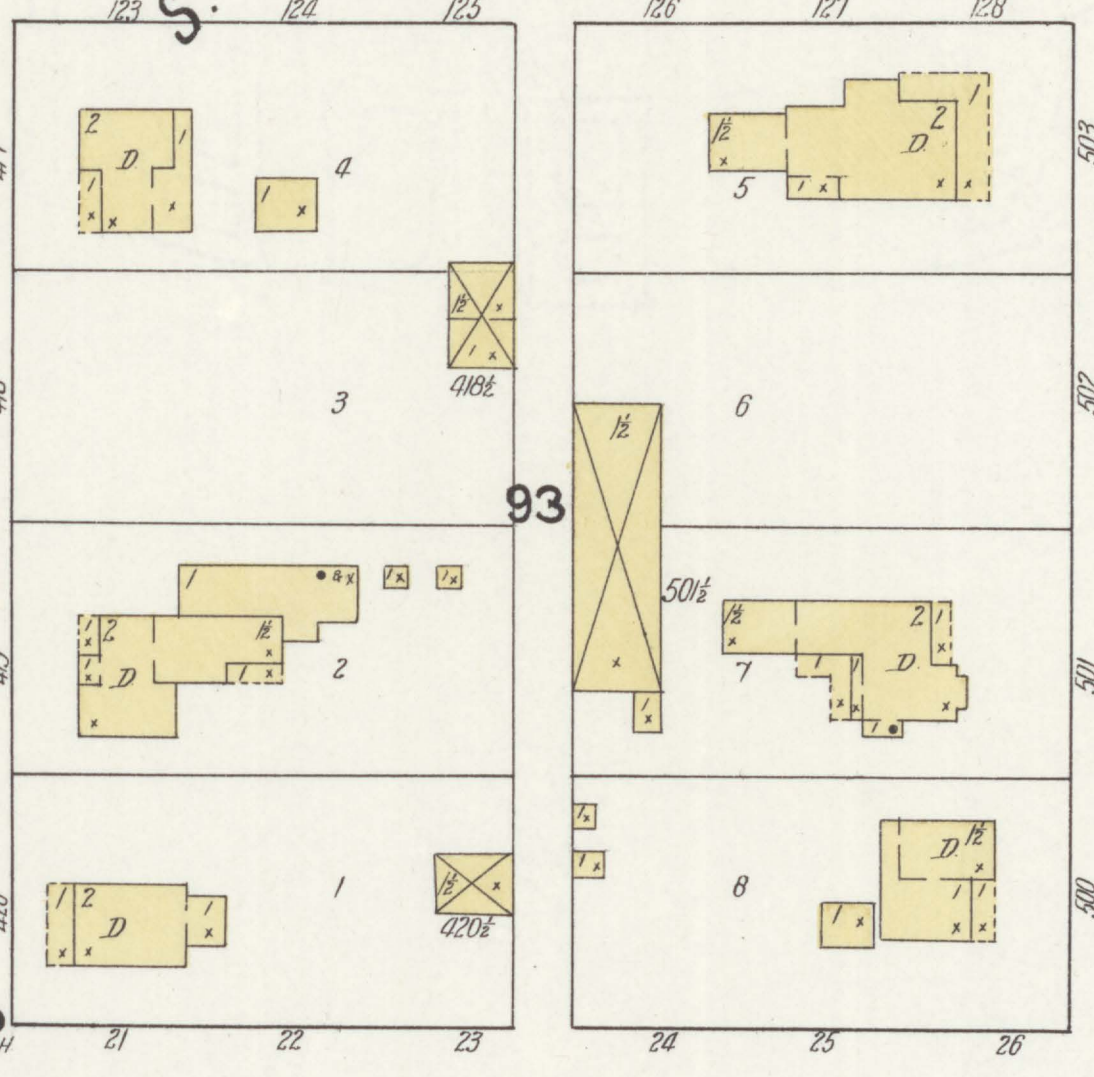
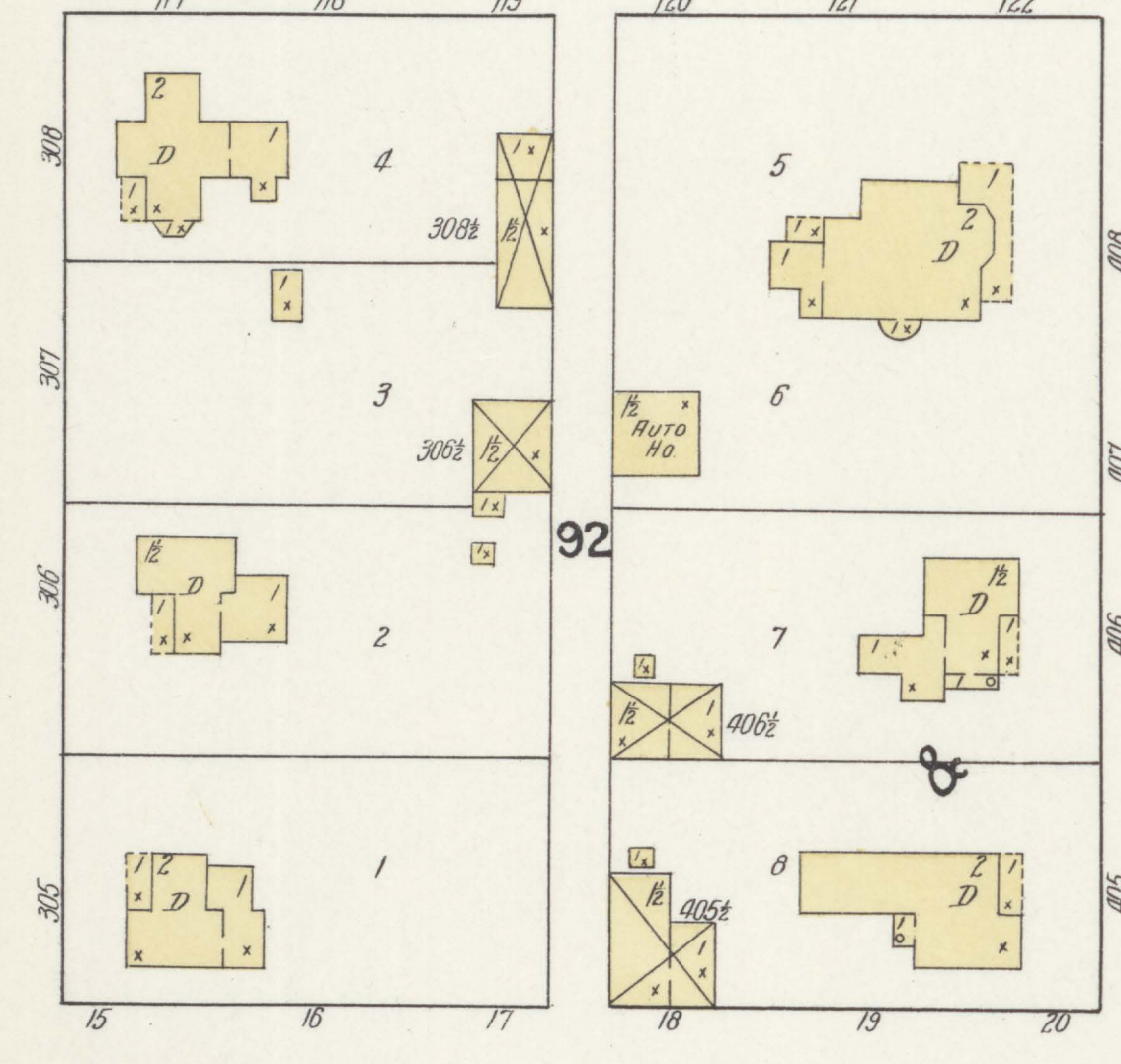
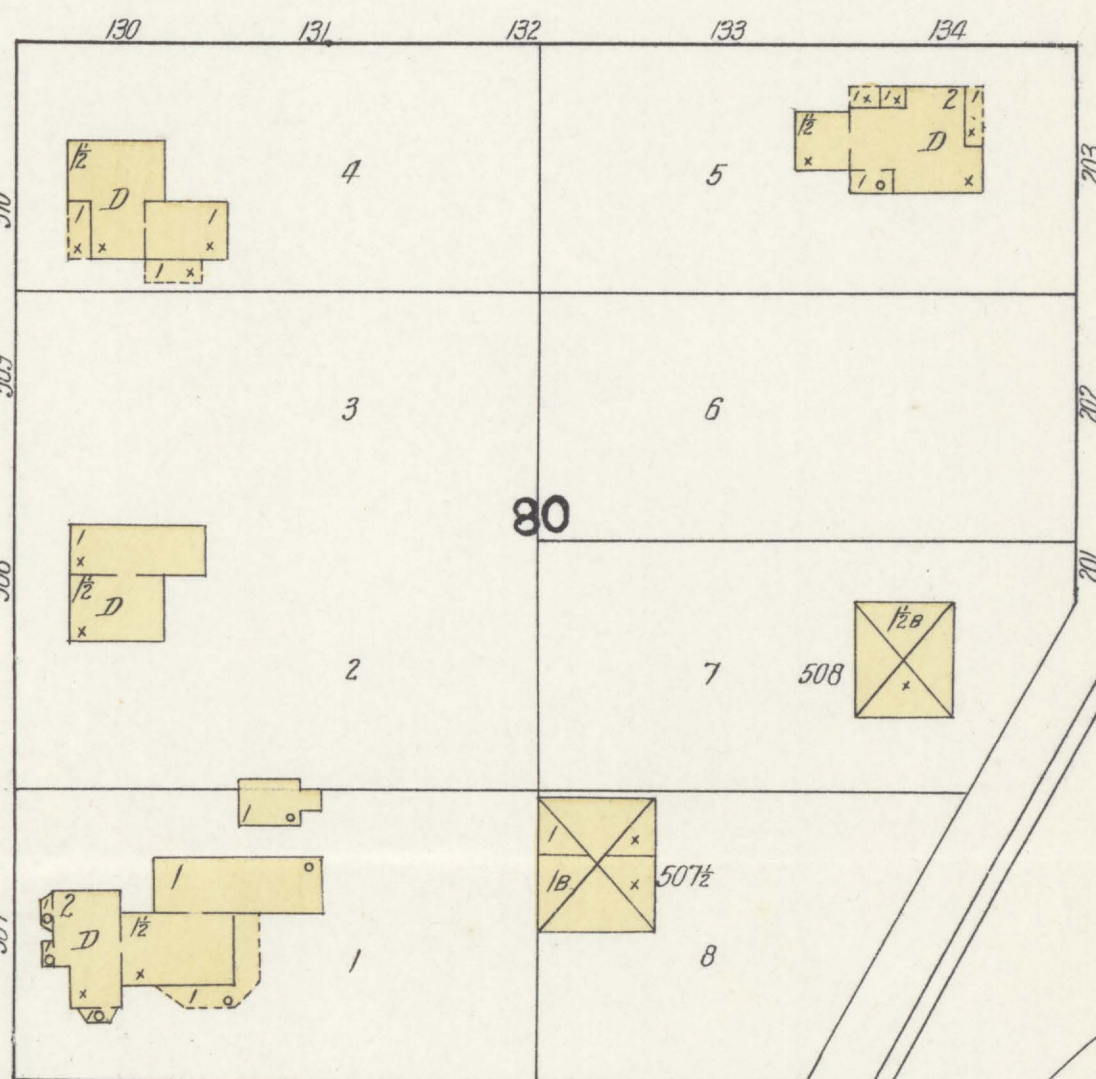
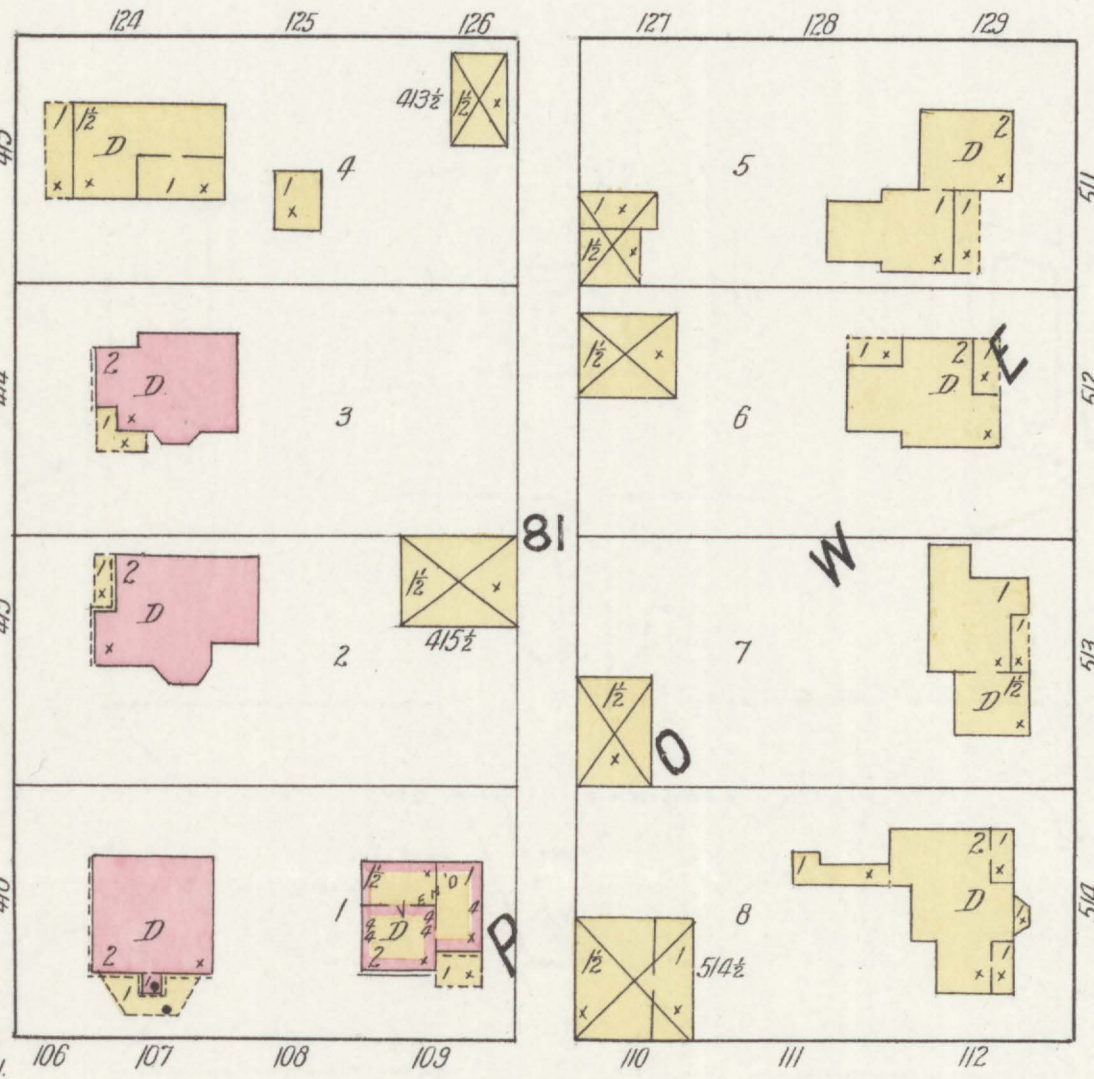
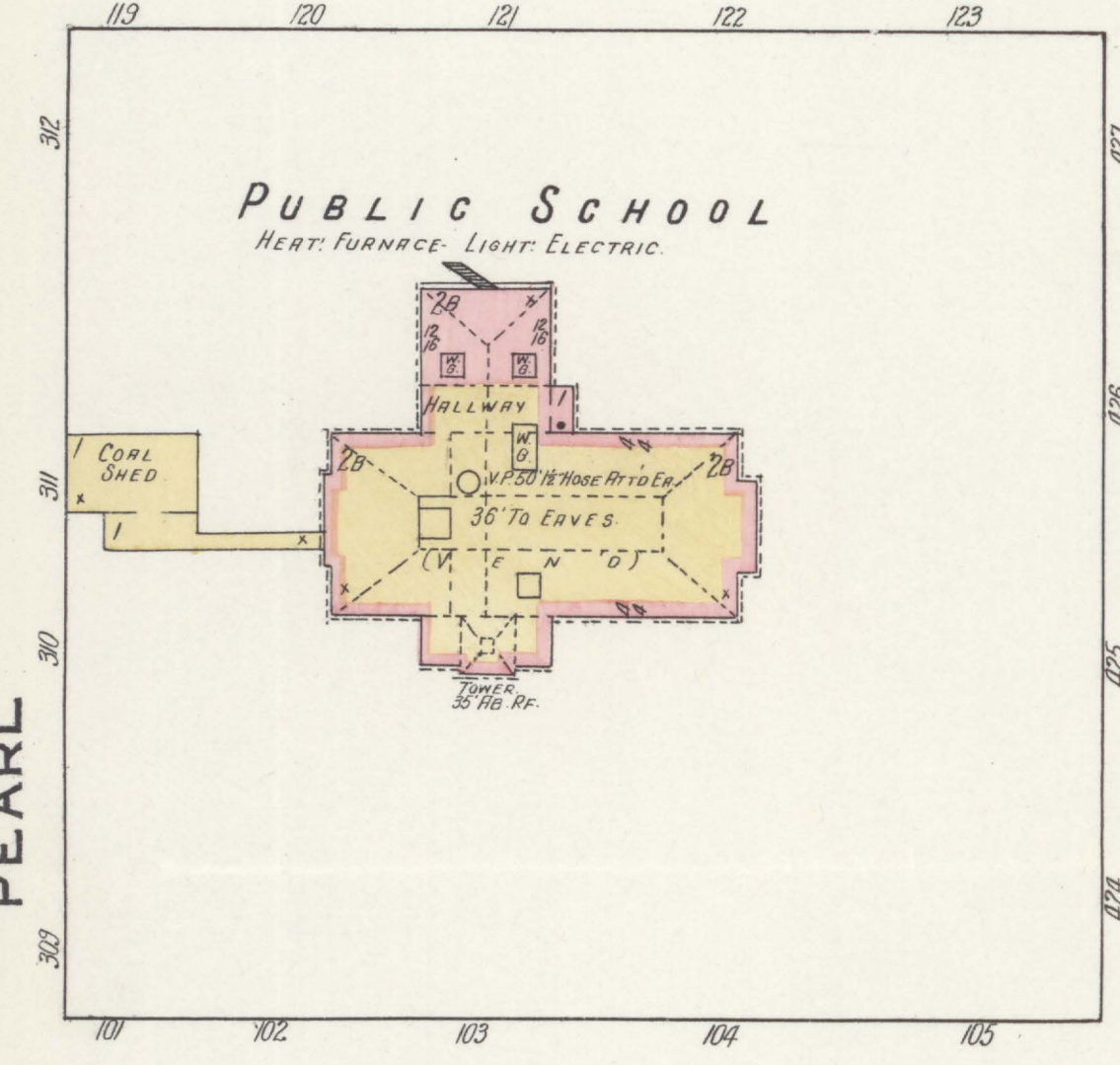
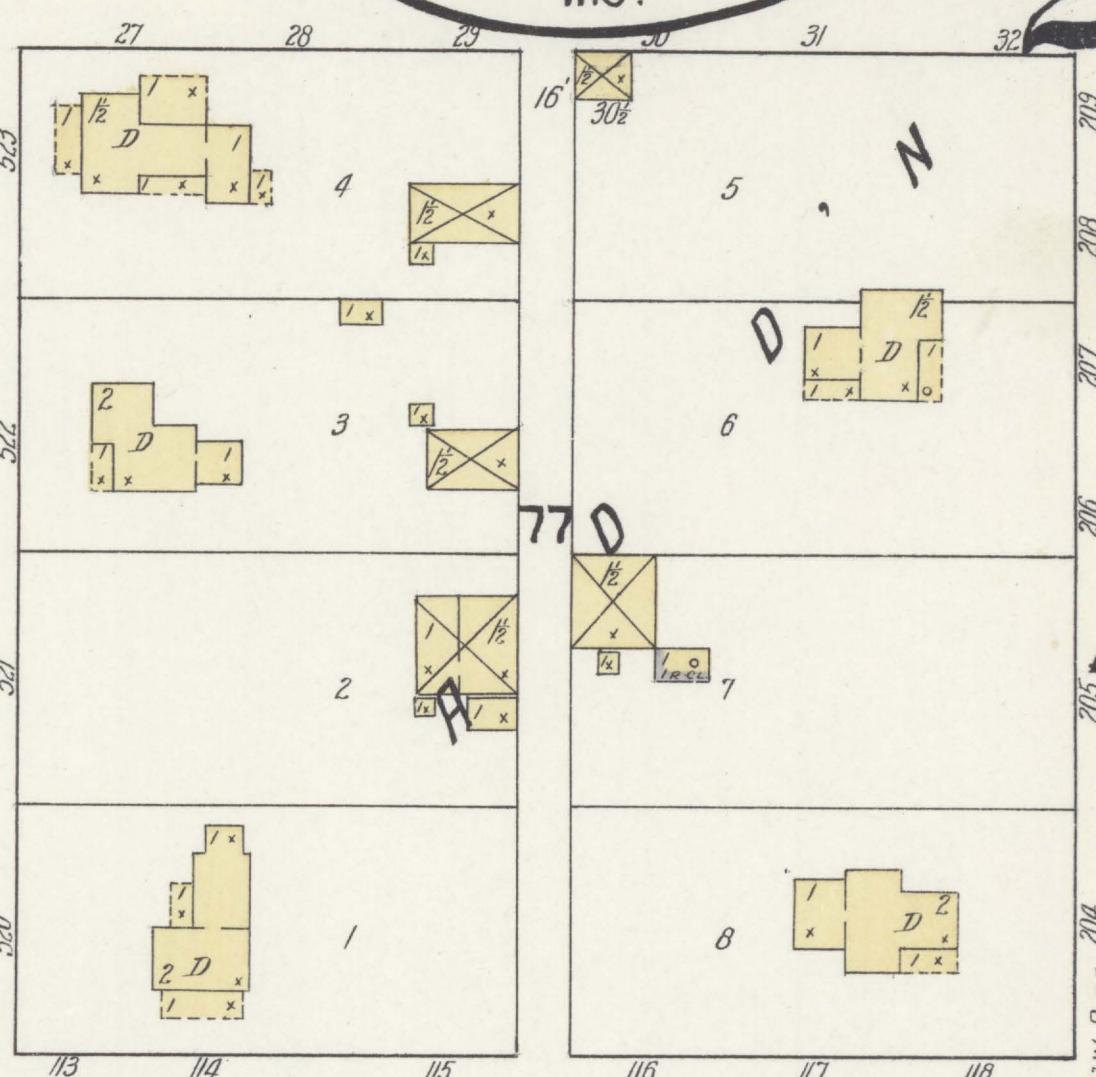
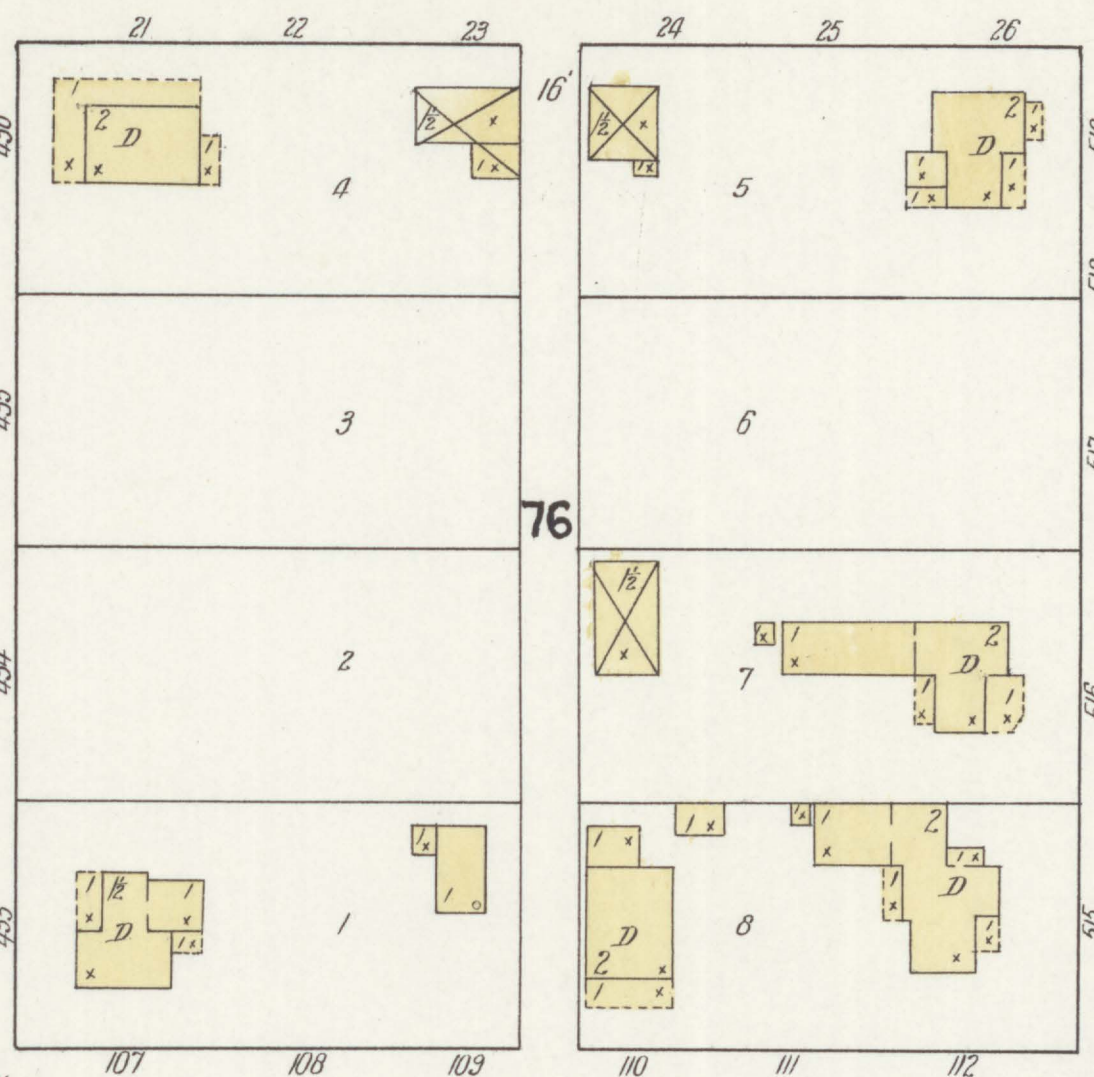
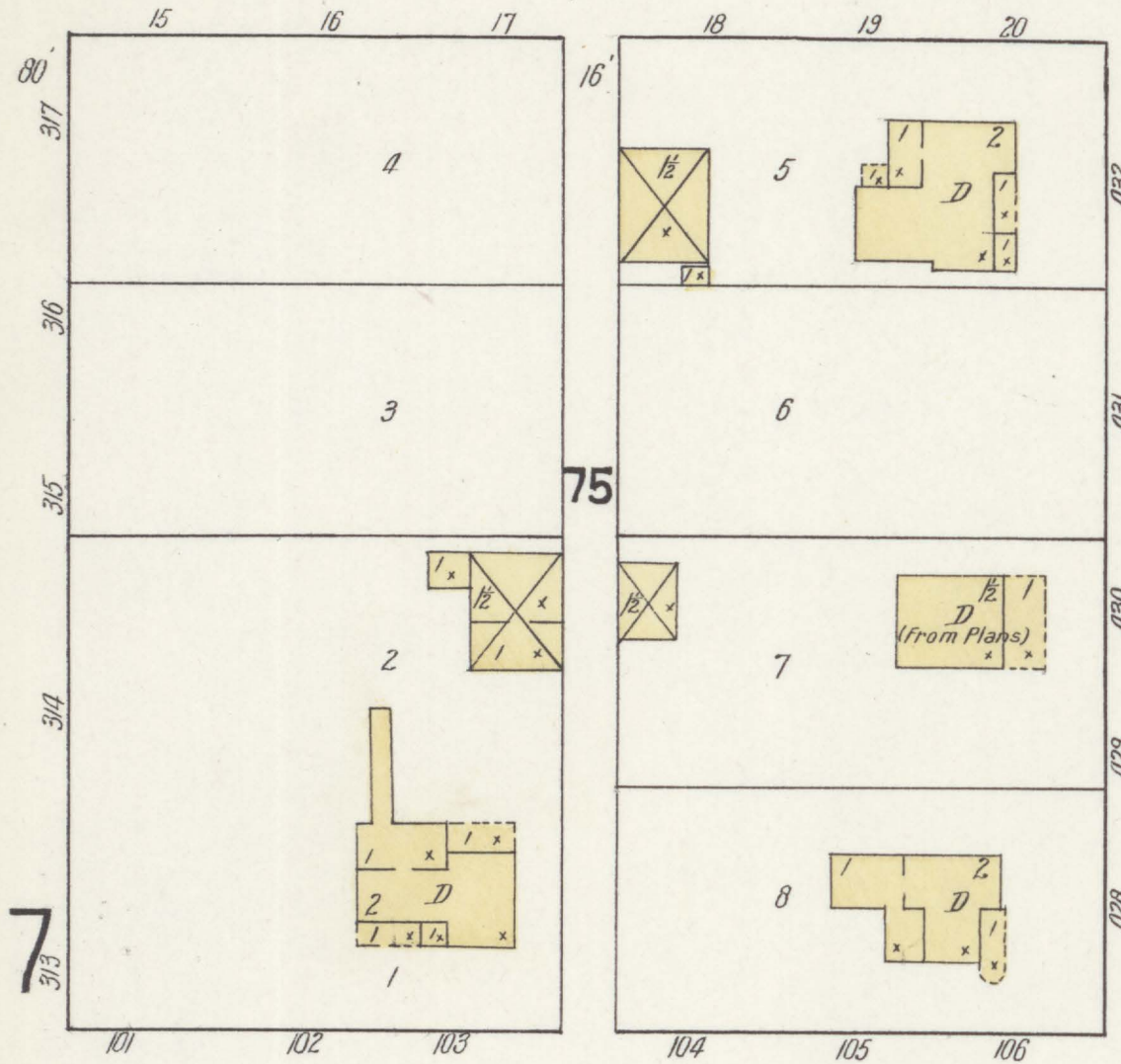
STATE NORMAL SCHOOL

Heat: Steam, Lights: Elec. - V.P. 100' 1/2" C. Hose & 50' 1" C. Hose, Att'd. as shown, Conn'd. to City Main.



Scale of Feet.



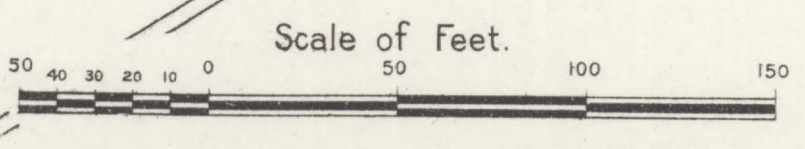
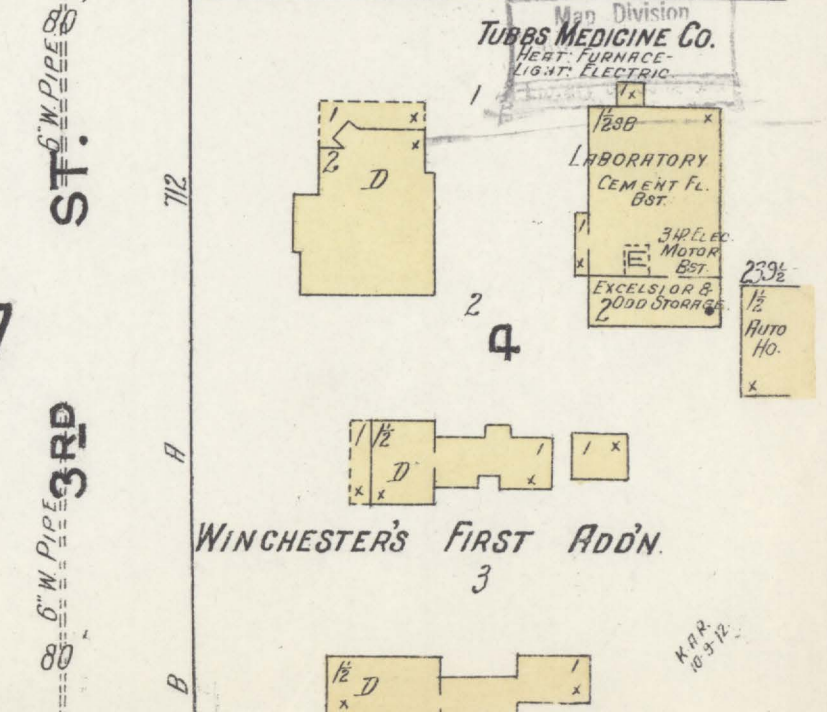


PINE

MAPLE

ELM

WALNUT 6



GEORGE FORTUNE  
FEED MILL  
WATCHMAN - POWER WATER  
HEAT: STOVES - LIGHTS: ELECTRIC  
MACHINERY:  
10 STANDS ELEVATOR  
BST: LINE SHAFTING - COB CRUSHER  
1 SHELLER WATER WHEEL  
19\"/>

WINCHESTER'S FIRST ADDN

TUBBS MEDICINE CO.  
HEAT: FURNACE  
LIGHT: ELECTRIC

LABORATORY  
ELEMENT FL.  
BOT.

EXCESSIVE 5  
2000 STOVES

2 3/4  
1/2  
HHP  
H.

1800

4 1/2

2 3/4

1/2

1/2

1/2

1/2

1/2

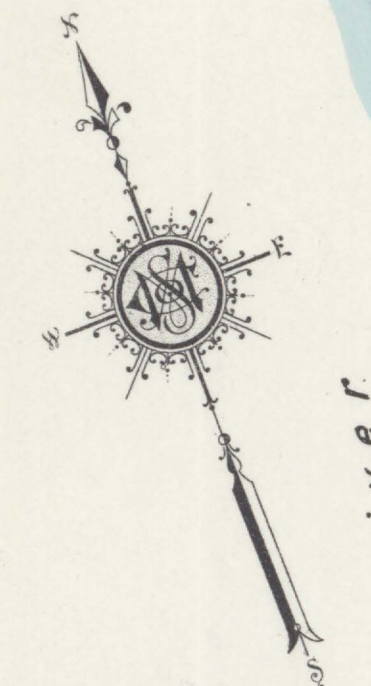
1/2



**WHITCOMB CAMPBELL CO.  
 FLOUR MILL.**  
 CAPACITY 100 BLS PER 24 HRS.  
 NO WATCHMAN. NO FIRE APPS. HEAT STOVES.  
 LIGHTS, ELECTRIC. POWER, WATER.  
 MACHINERY:  
 24 STRAND ELEVATORS.  
 265: LINE SHAFING WATER WHEEL.  
 135: 1 SEPARATOR. 2 PICKERS. 3 DOUBLE ROLLS.  
 1 WHEAT STEAMER. 1 FEED GRINDER.  
 2 CORN GRINDERS.  
 2 CENTRIFUGAL REELS. 1 SIFTER. 1 SCOURER.  
 1 PURIFIER.  
 34 FL. 1 NATIONAL REFINER. 1 CYCLONE DUST COLLECTOR.  
 1 SCOURER. 2 SCALPERS & GRADERS.  
 4 FLOUR DRESSERS. 1 PURIFIER.

**WHITCOMB CAMPBELL CO.  
 GRAIN ELEVATOR.**  
 CAPACITY 15,000 BU.  
 1 CLEANER.  
 SCALES.  
 1 HAY & FEED STORAGE.

**R.G. CHURCH.**  
 HEAT. FURN. LIGHTS. ELEC. 20 TO ENDS.  
 BARCON.

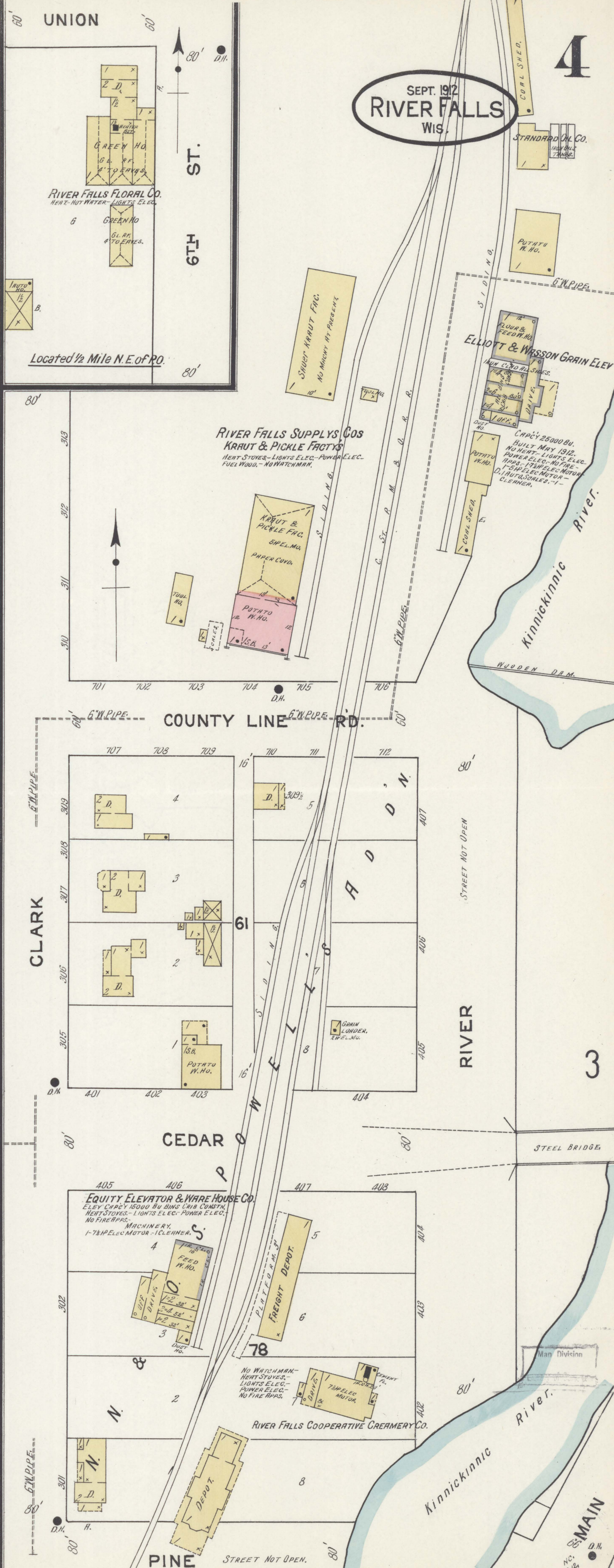
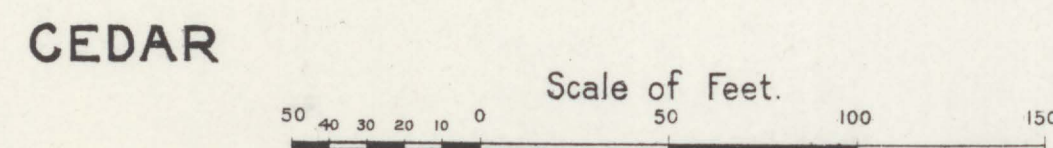
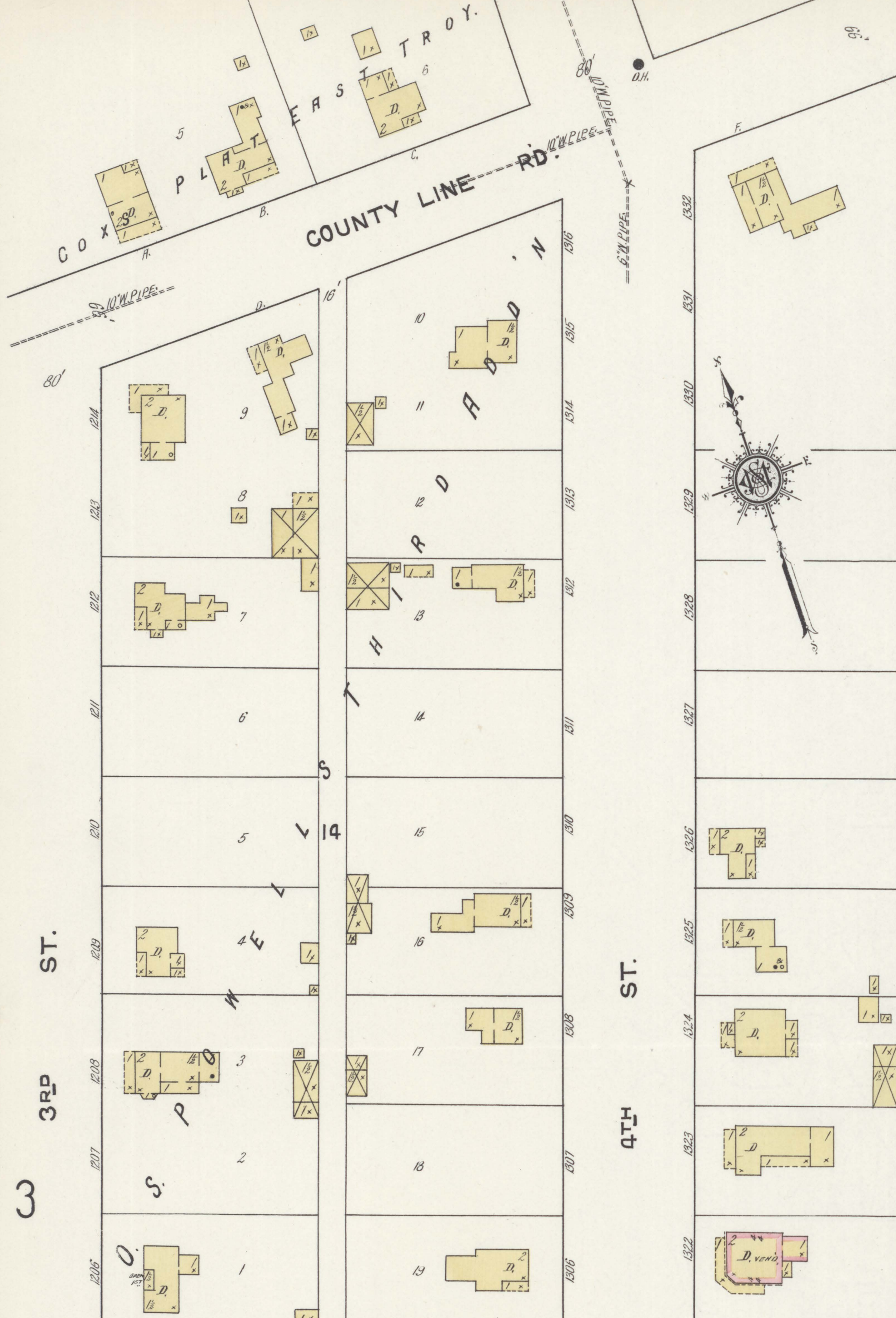


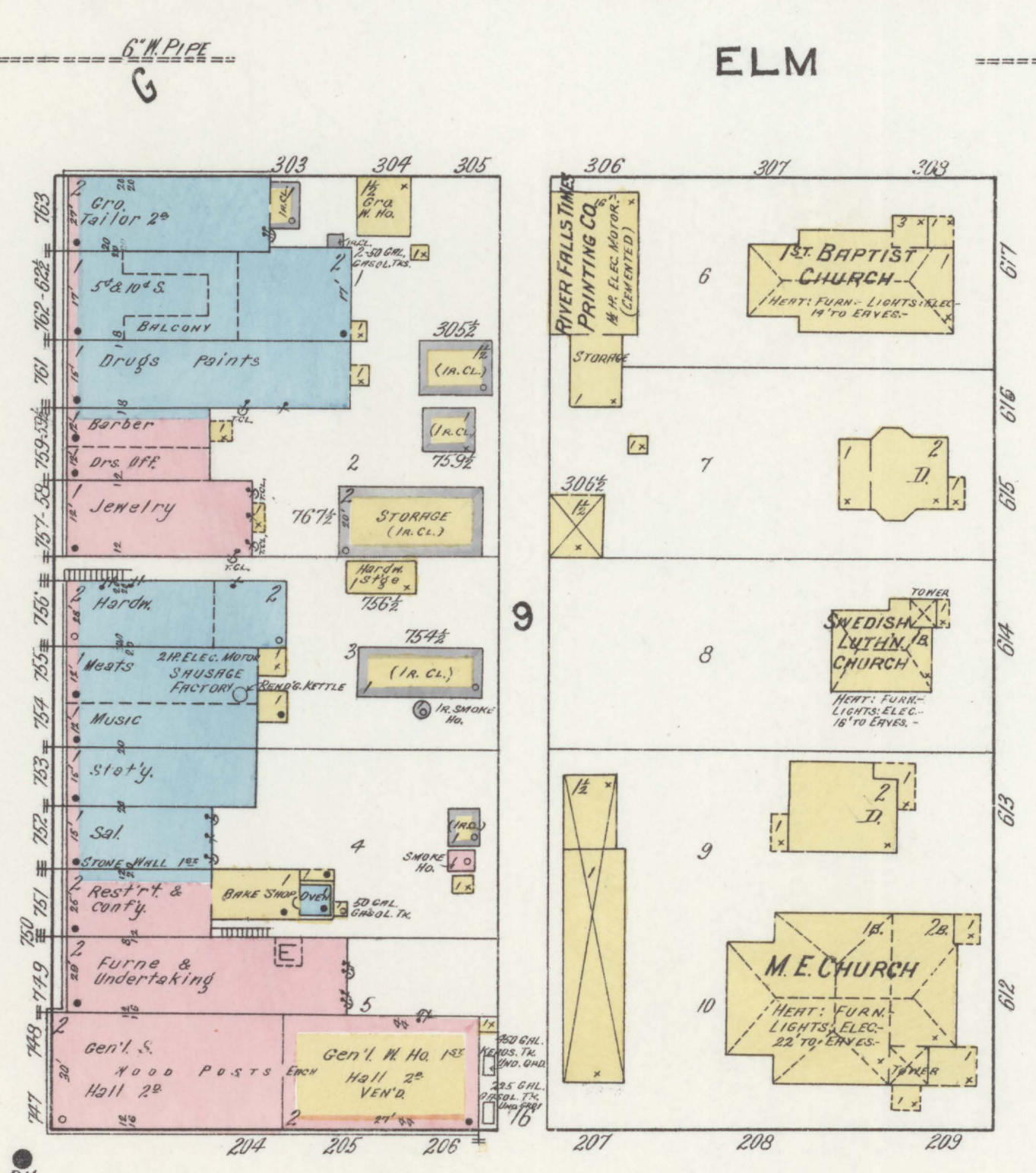
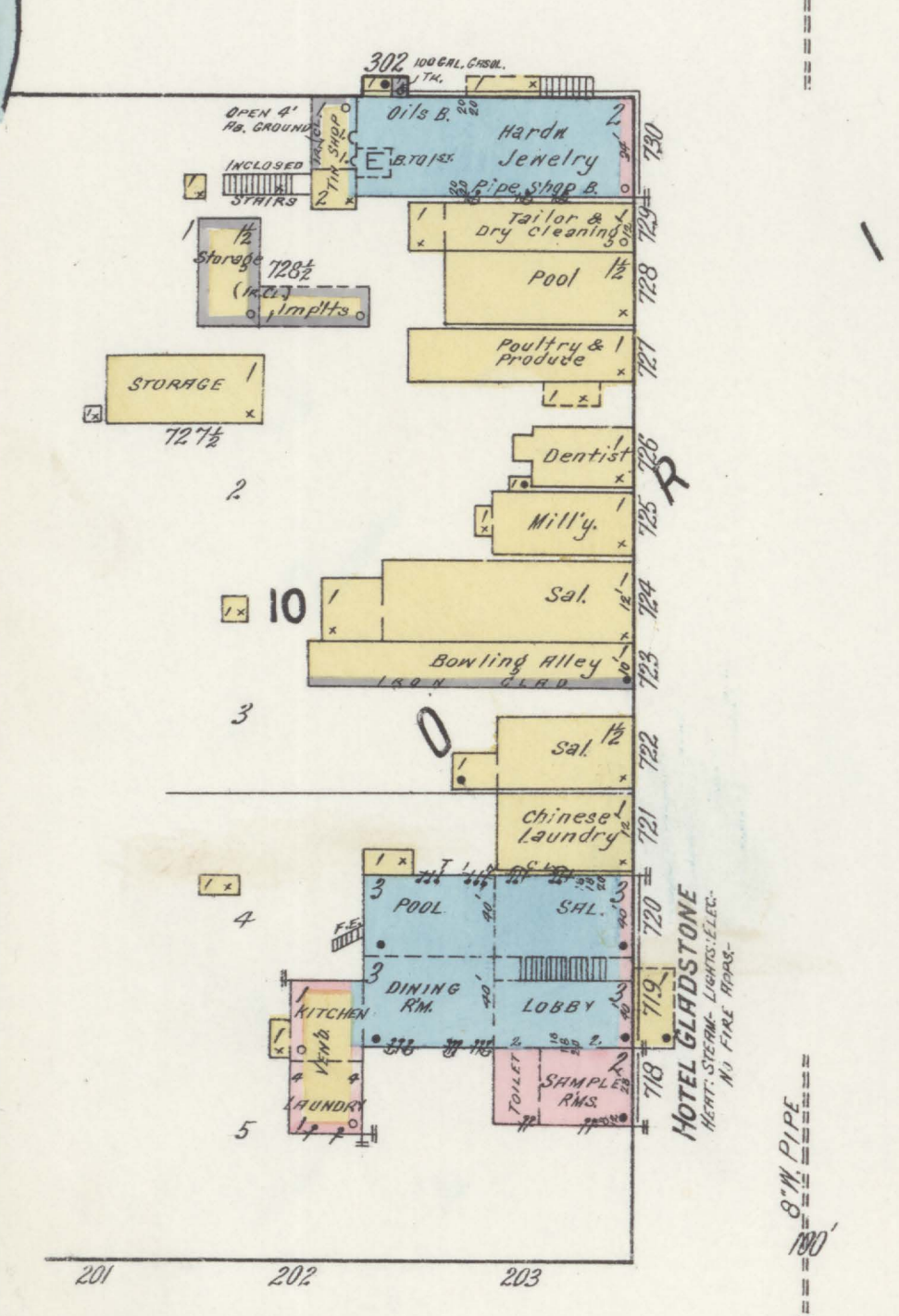
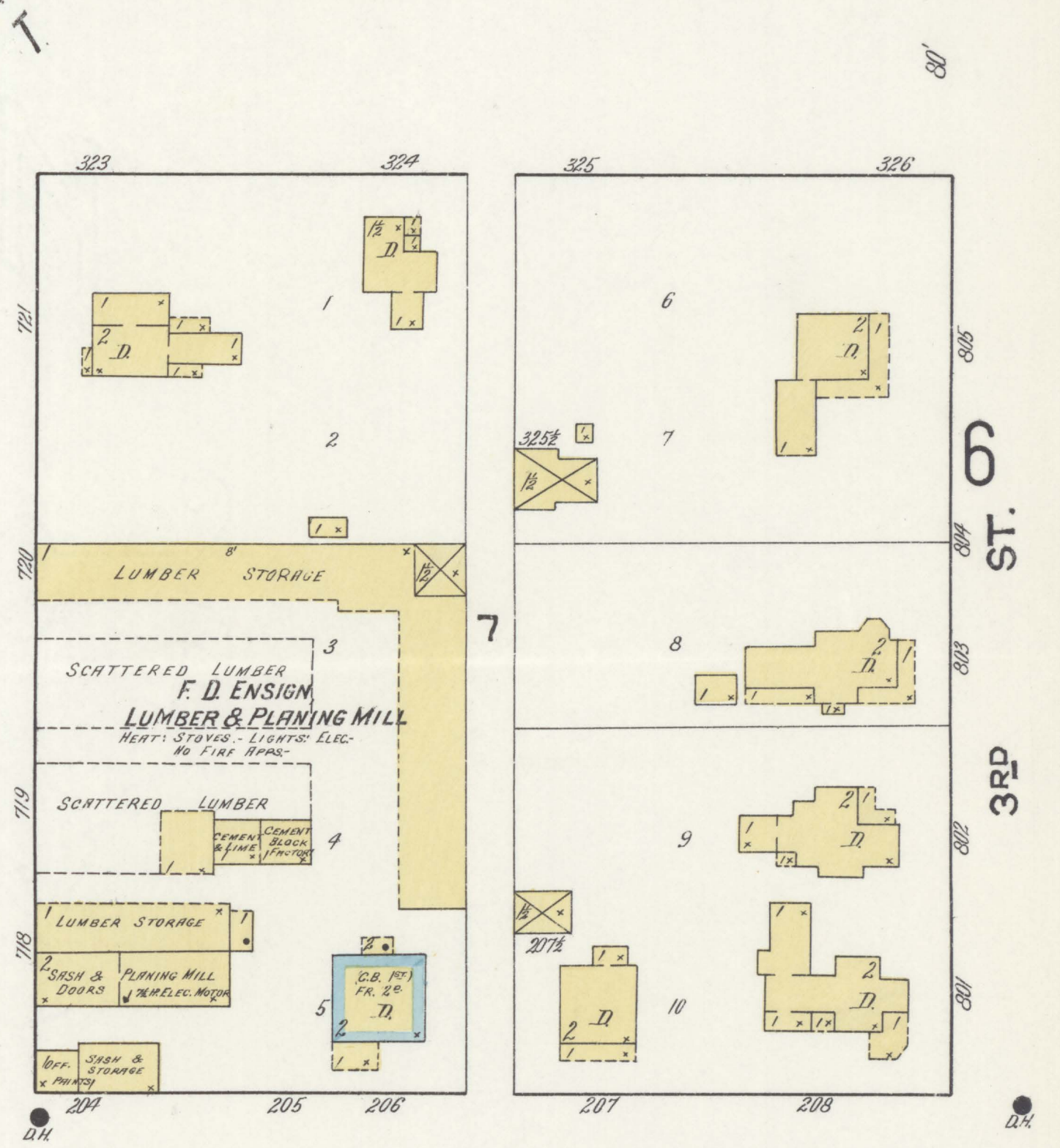
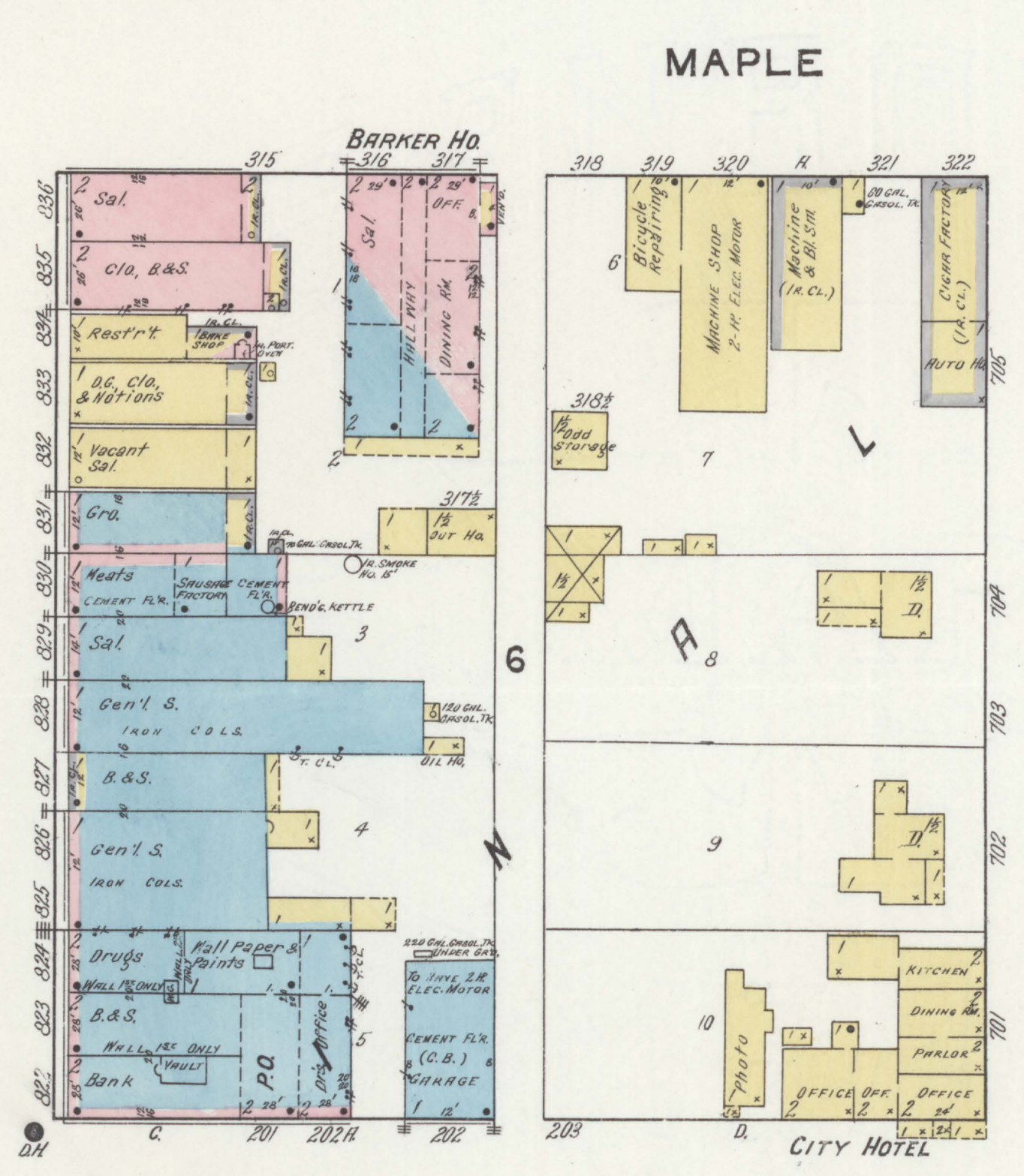
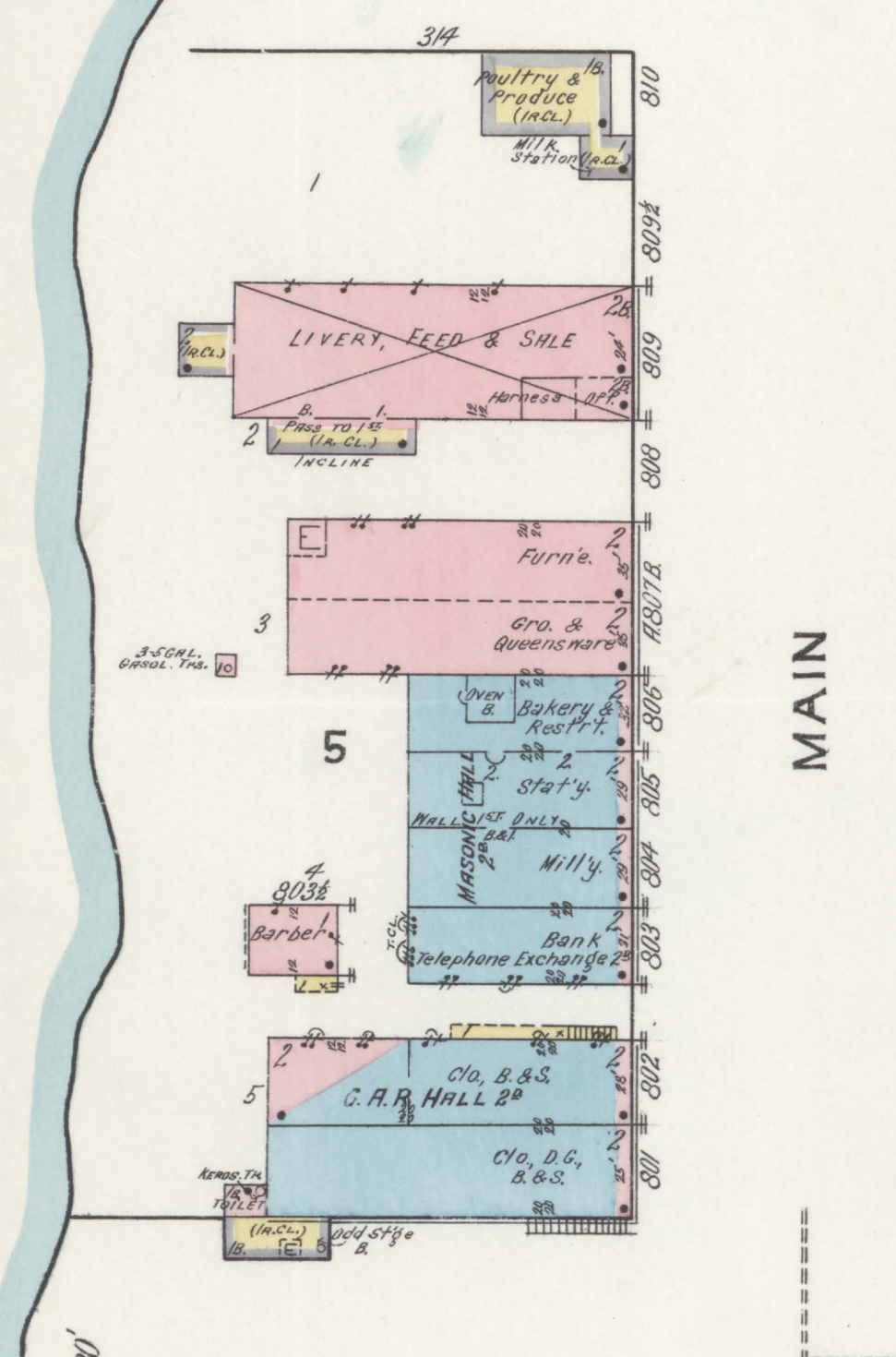
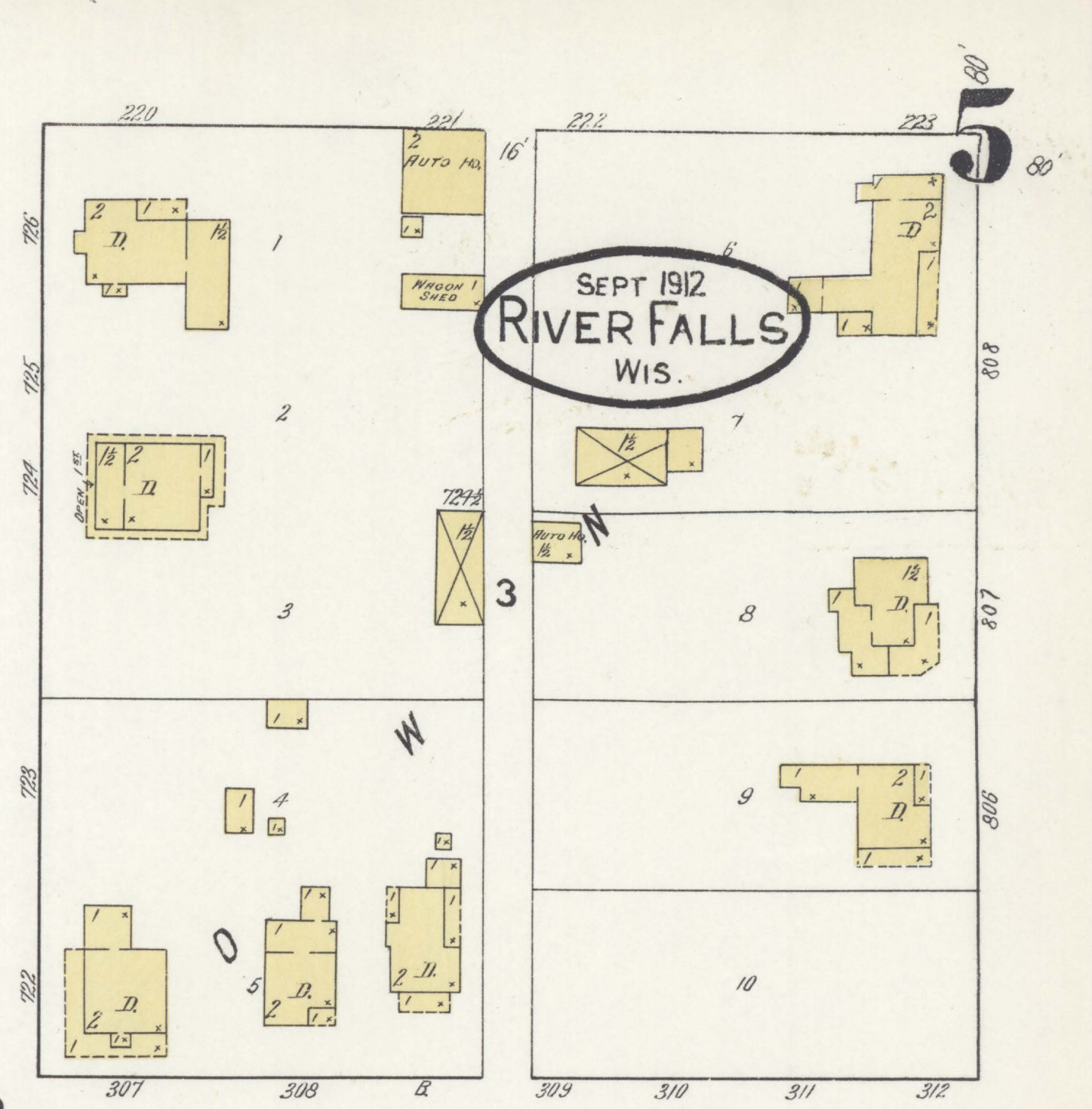
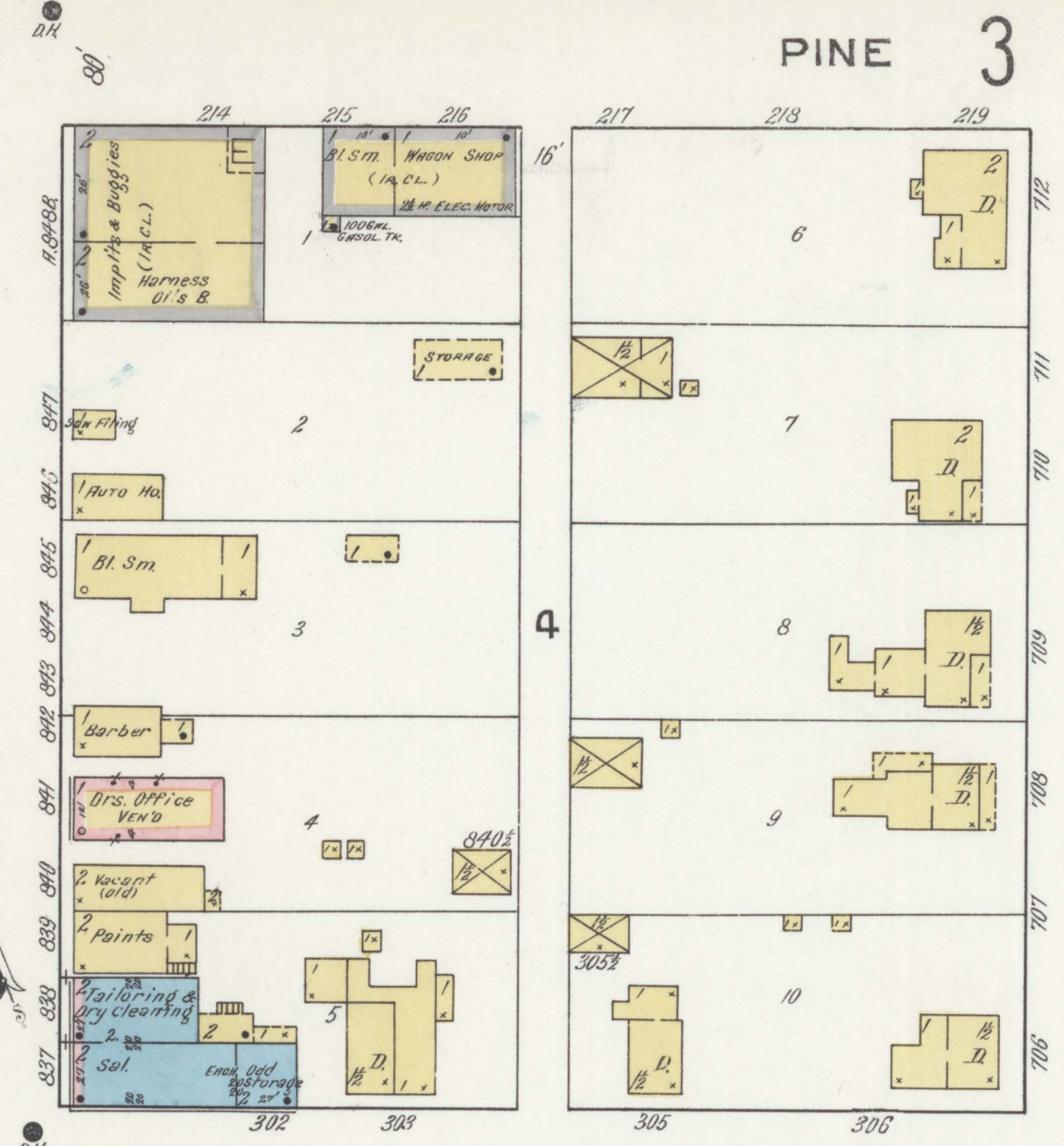
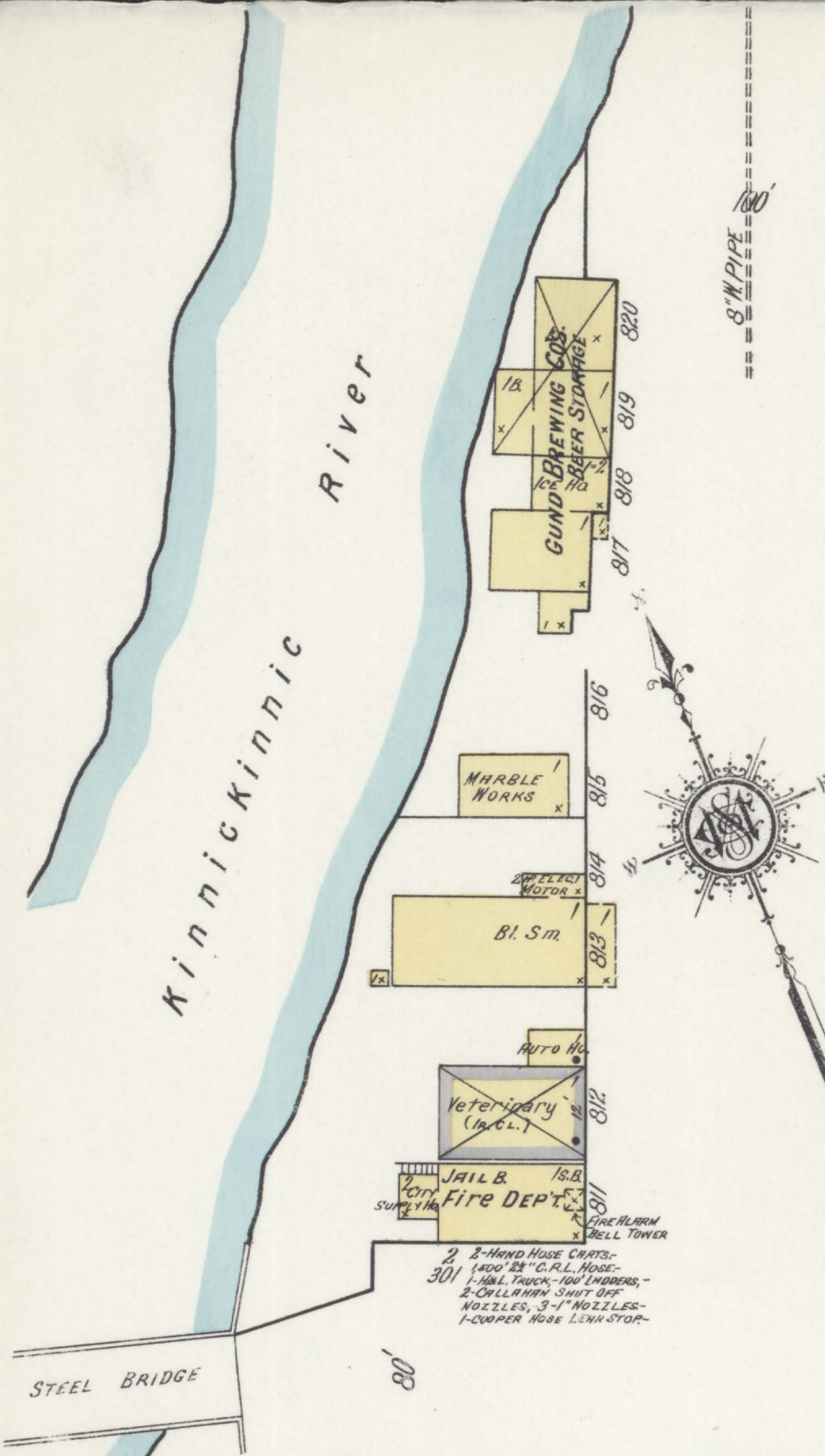
Scale of Feet.  
 0 50 100 150

4 ST.  
 3RD

PINE 5

SEPT. 1912  
RIVER FALLS  
WIS.



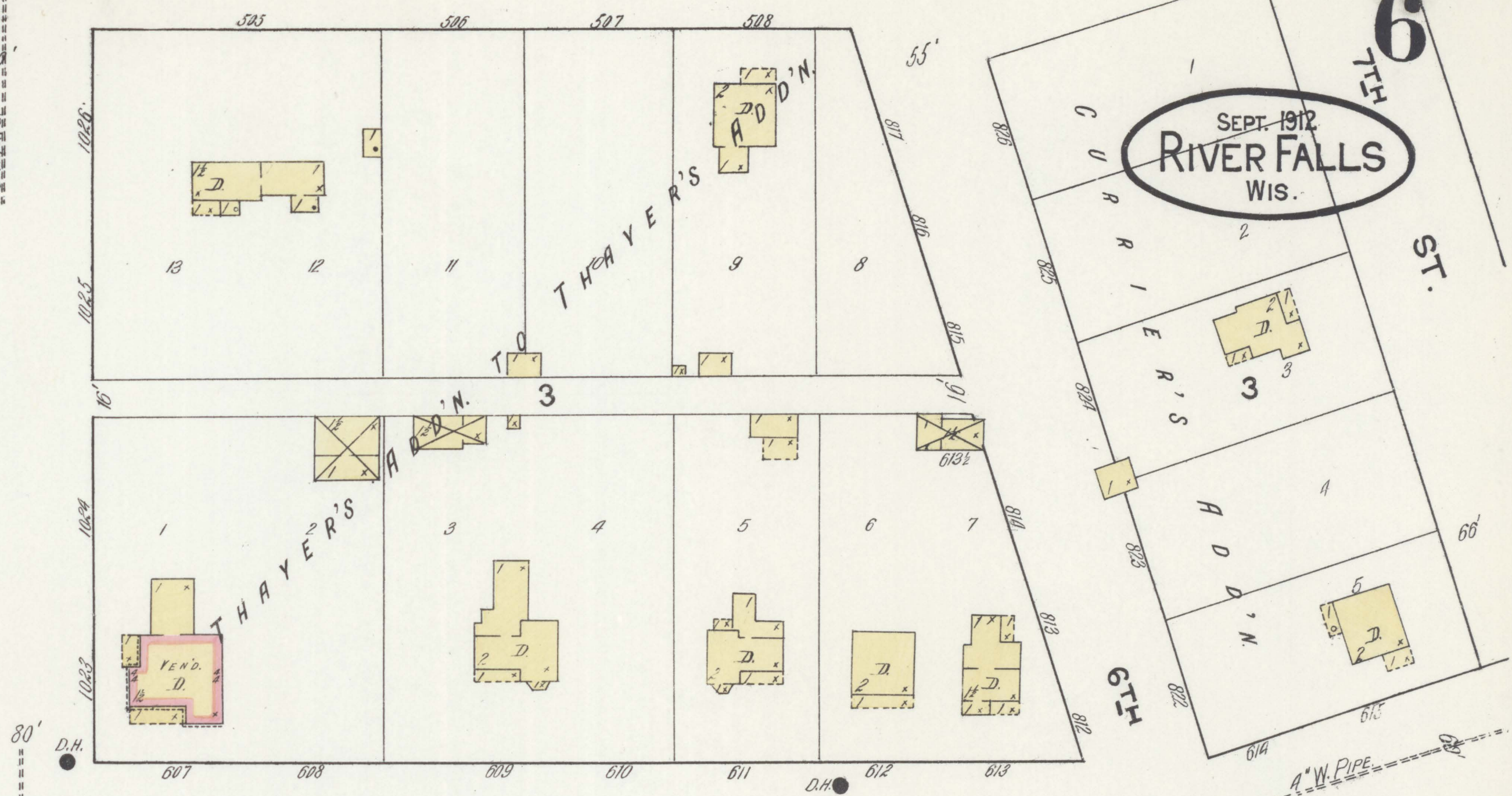
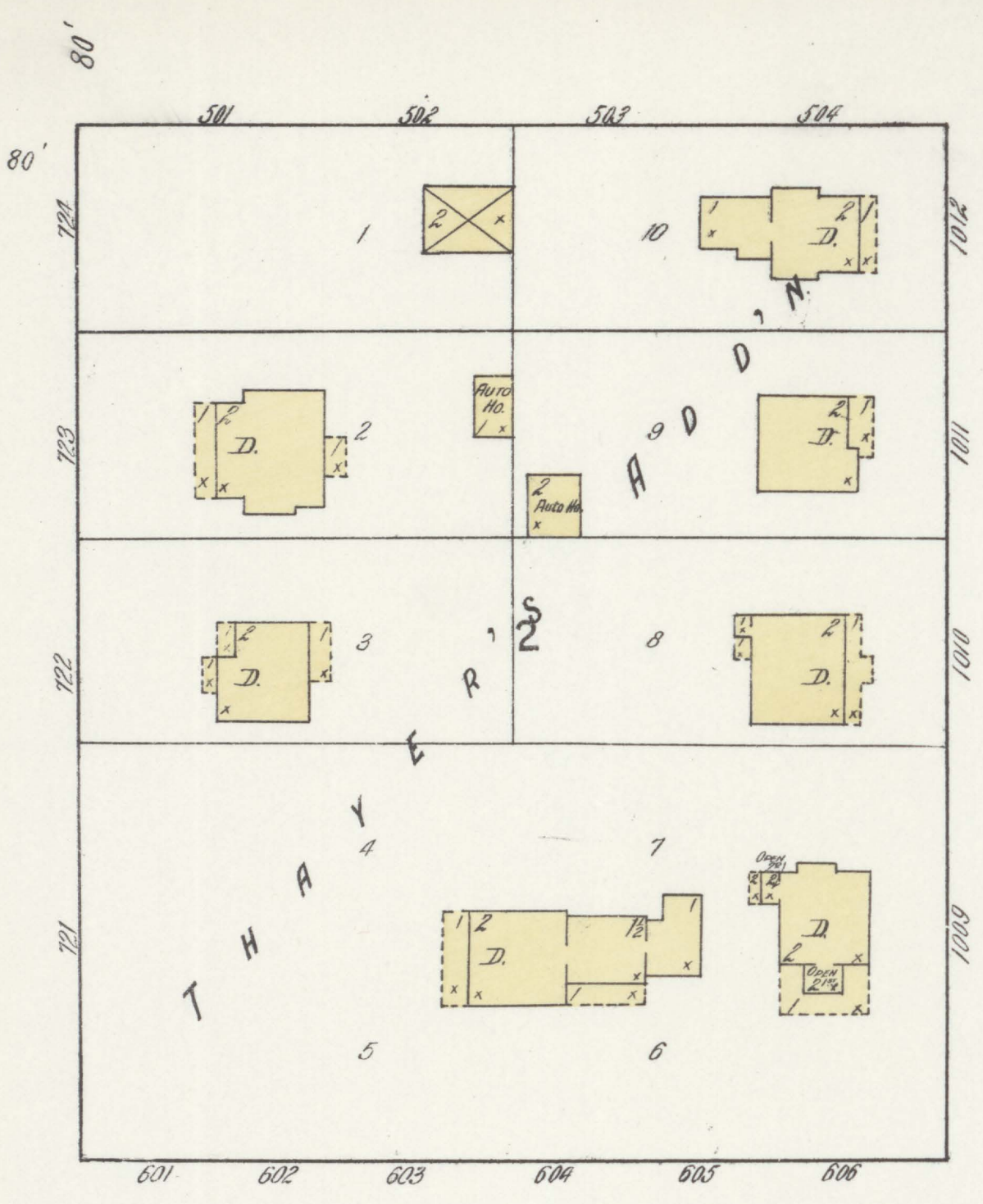


Scale of Feet.



4

PINE

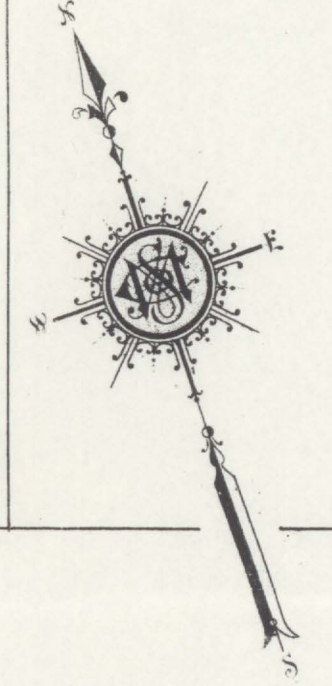
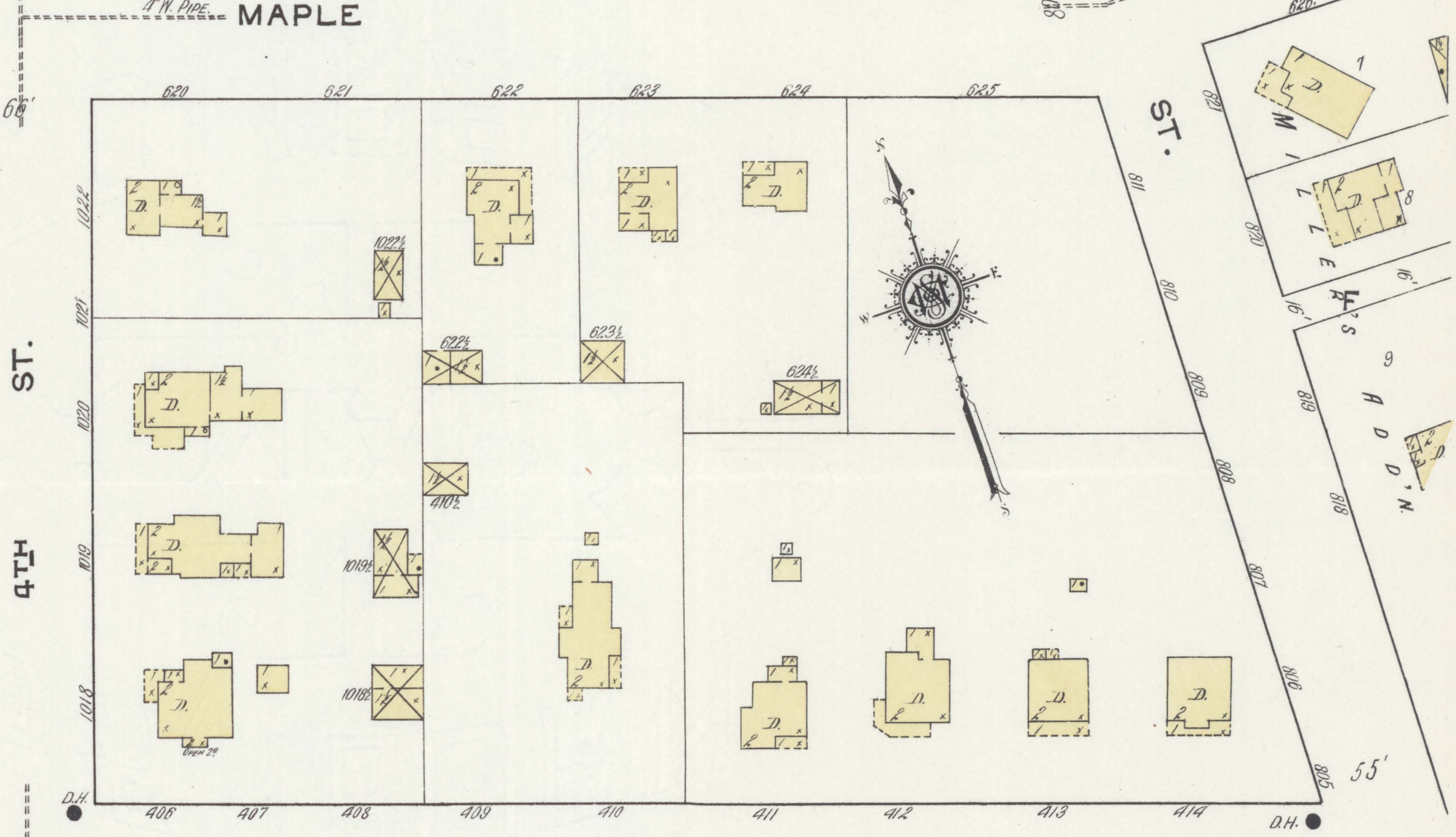
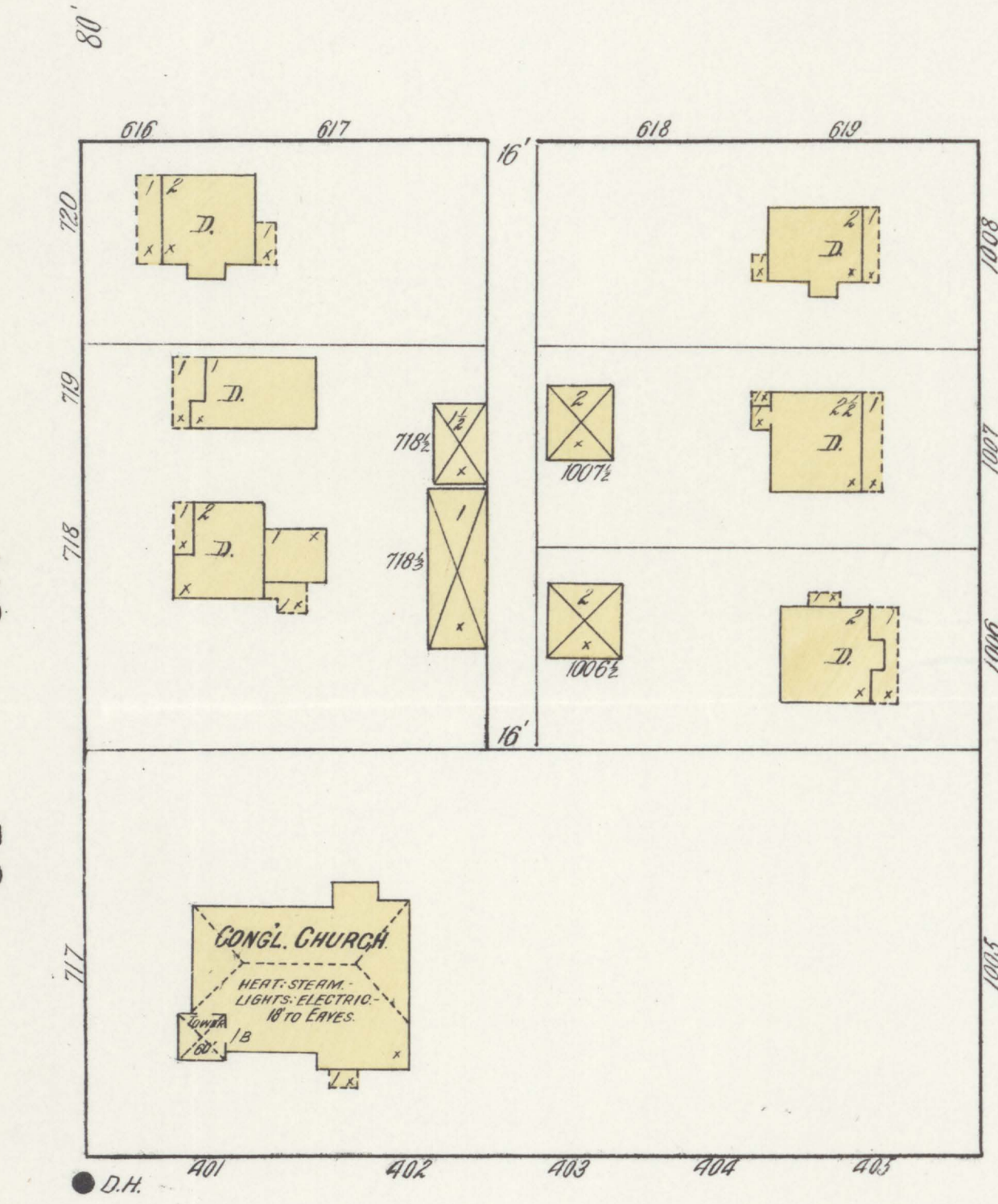


SEPT. 1912 RIVER FALLS WIS.

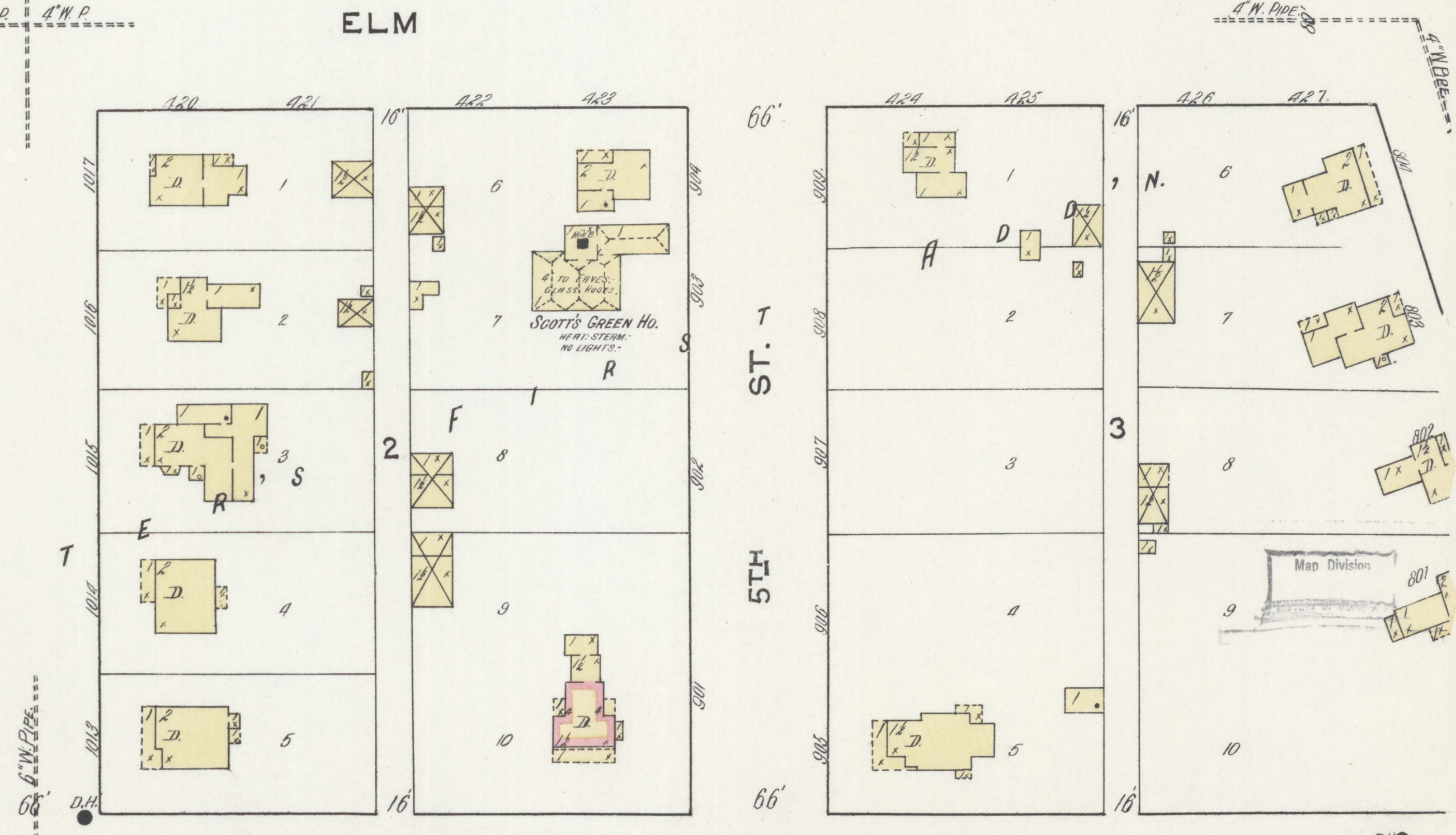
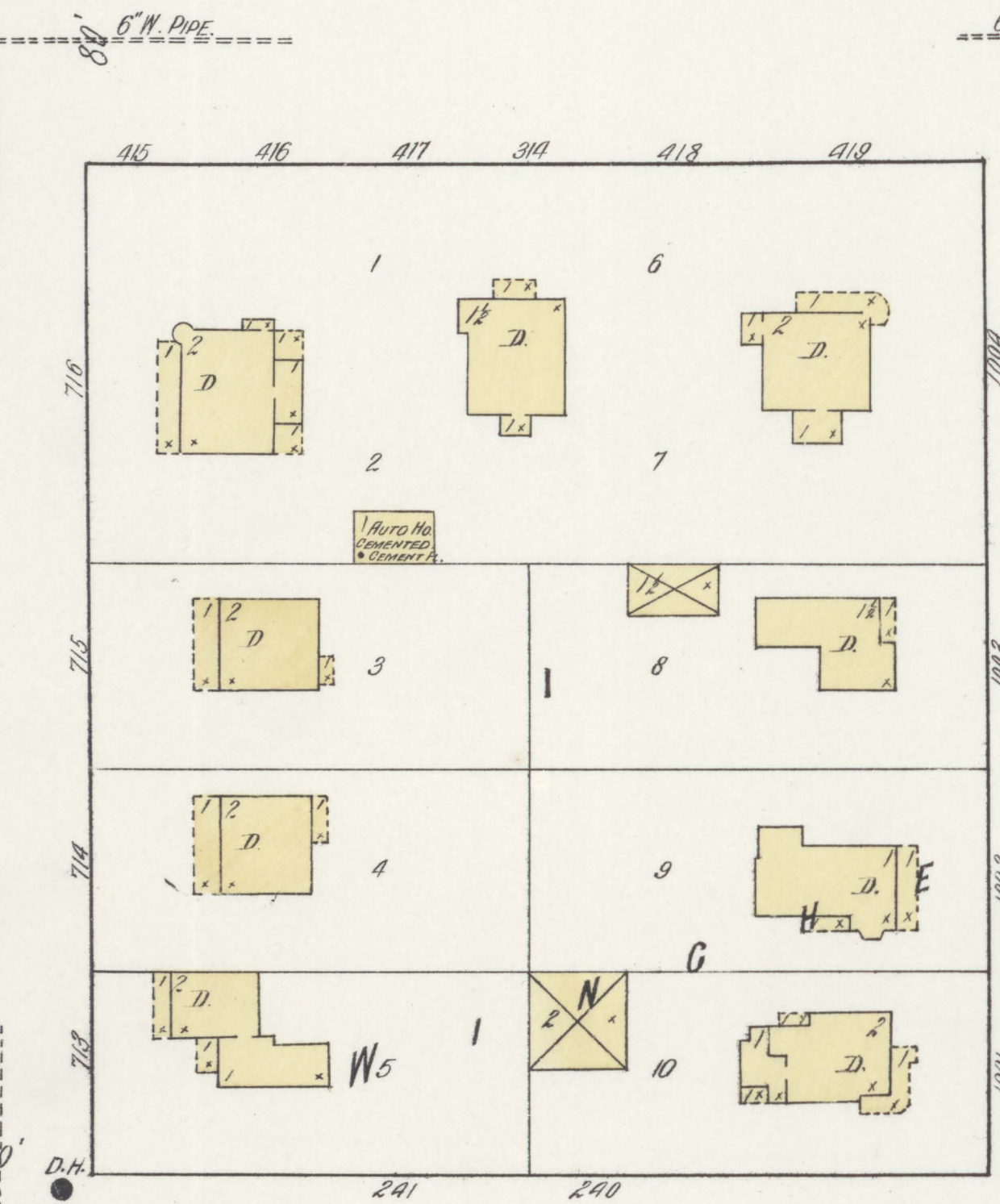
6

5

3RD



2



SCOTT'S GREEN HO. HEAT, STEAM, NO LIGHTS.

Map Division

Scale of Feet.

