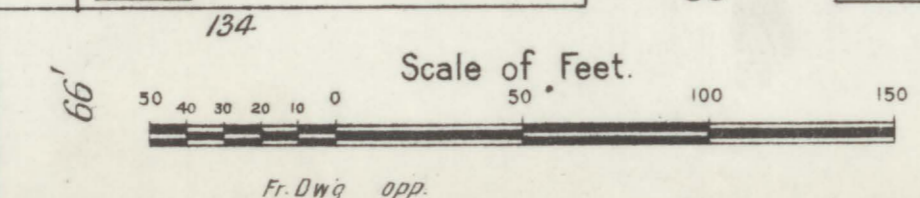
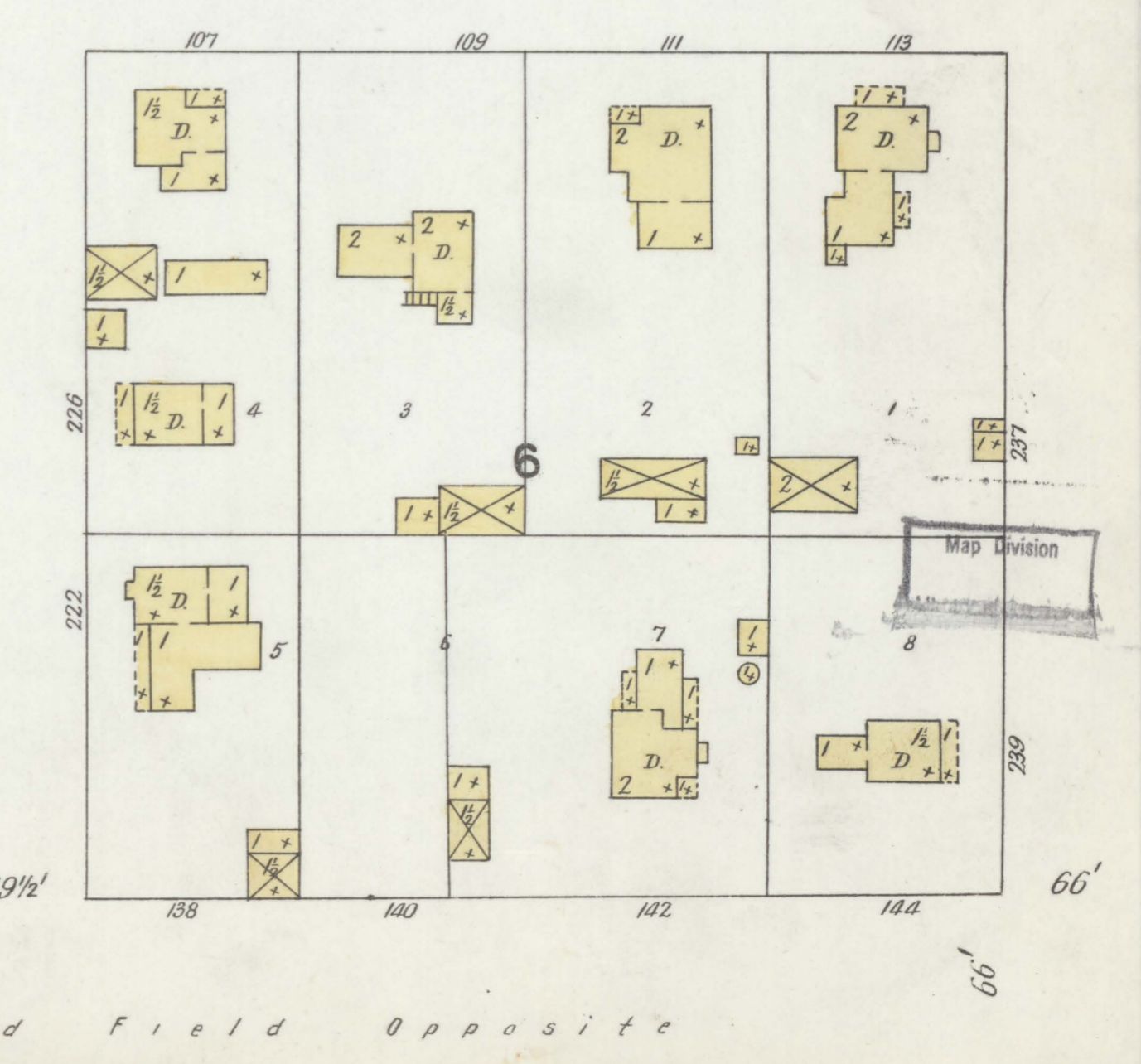
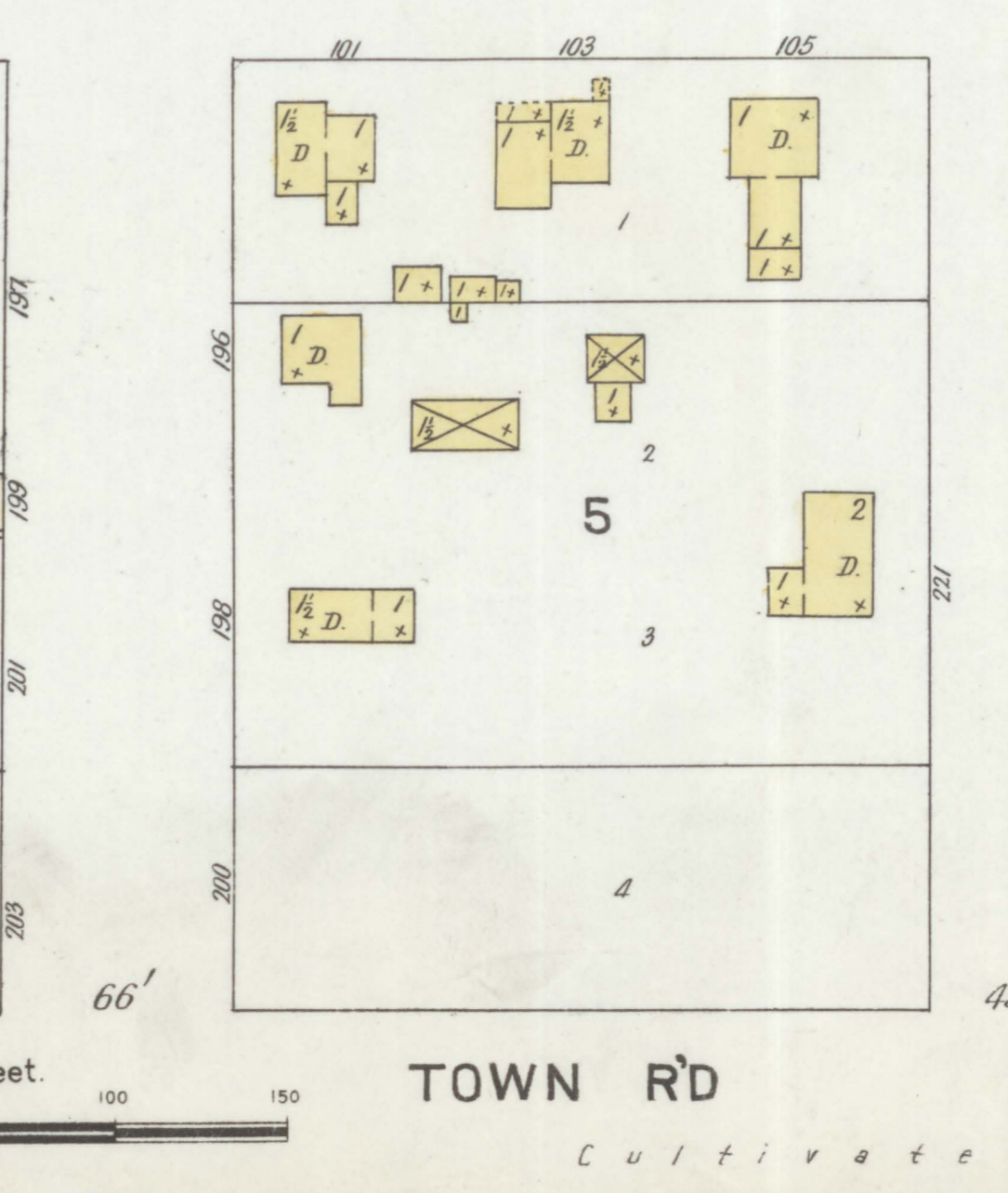
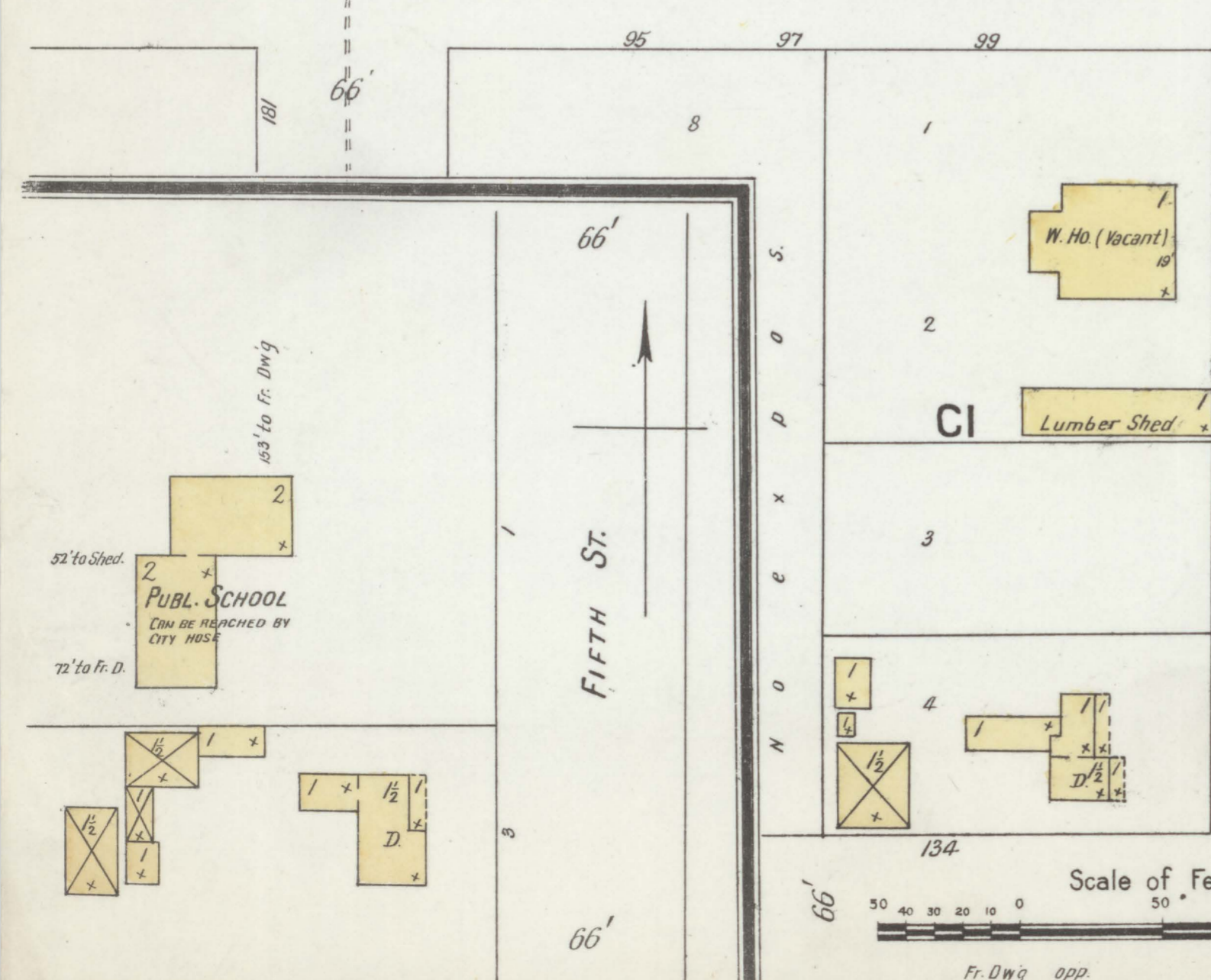
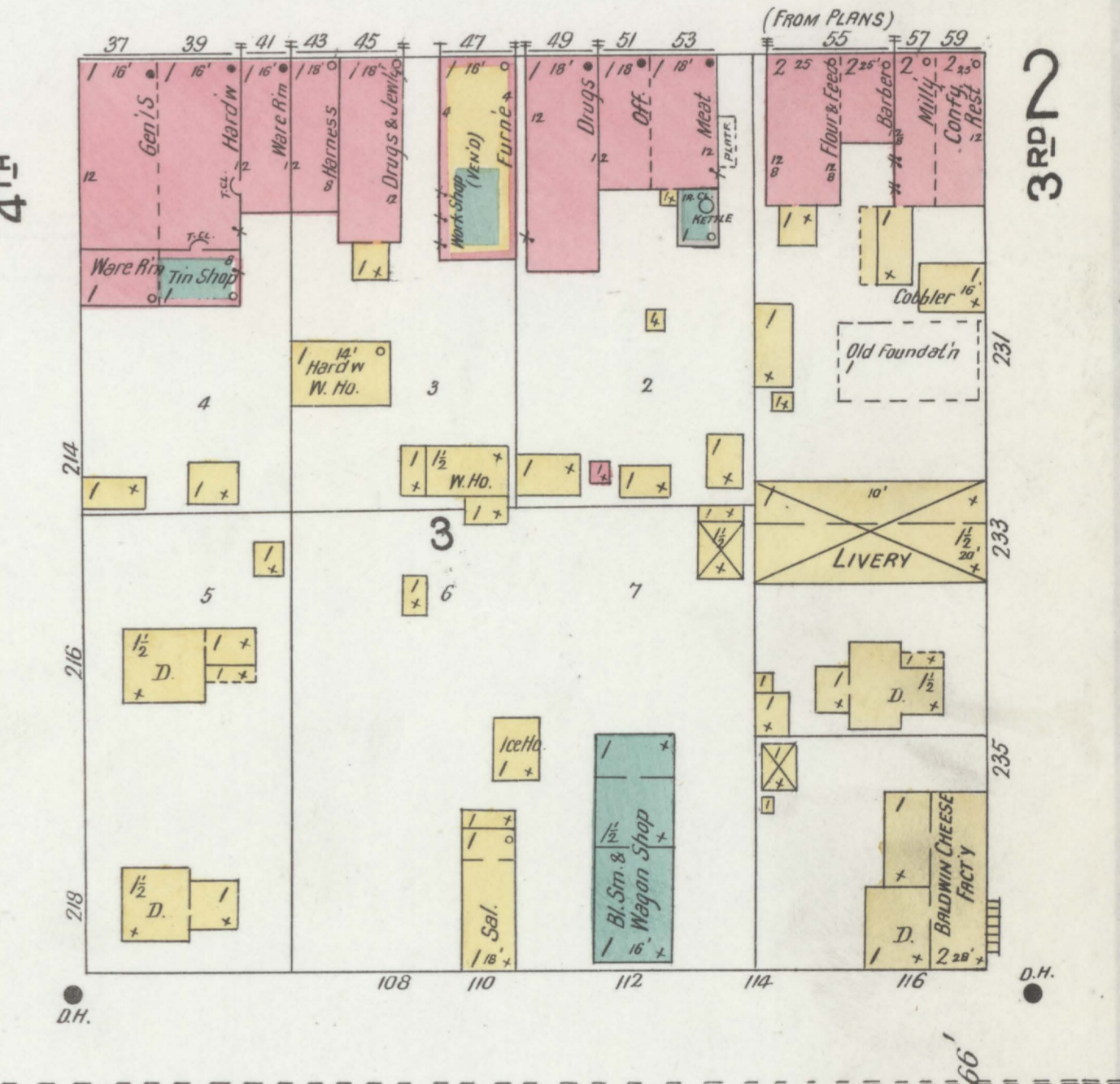
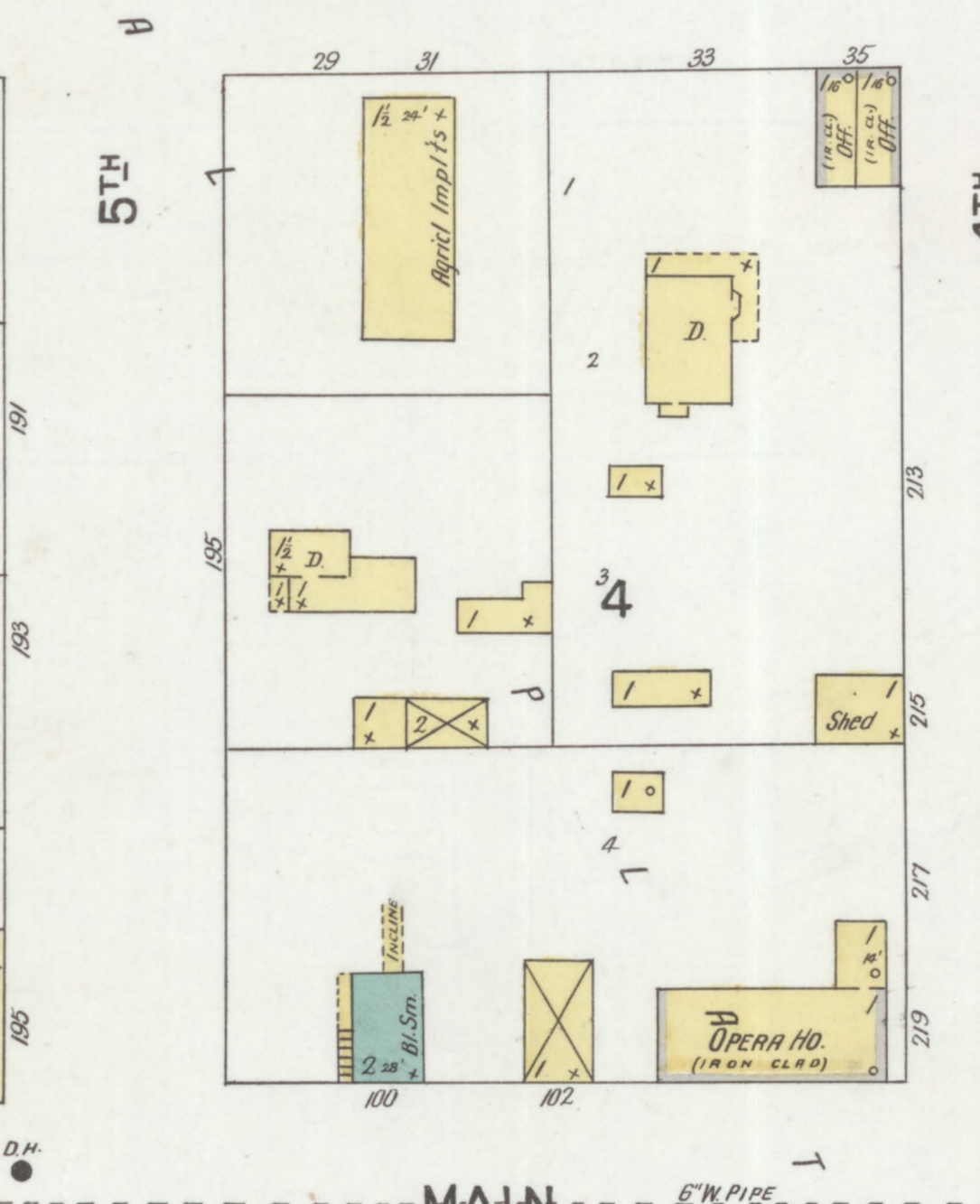
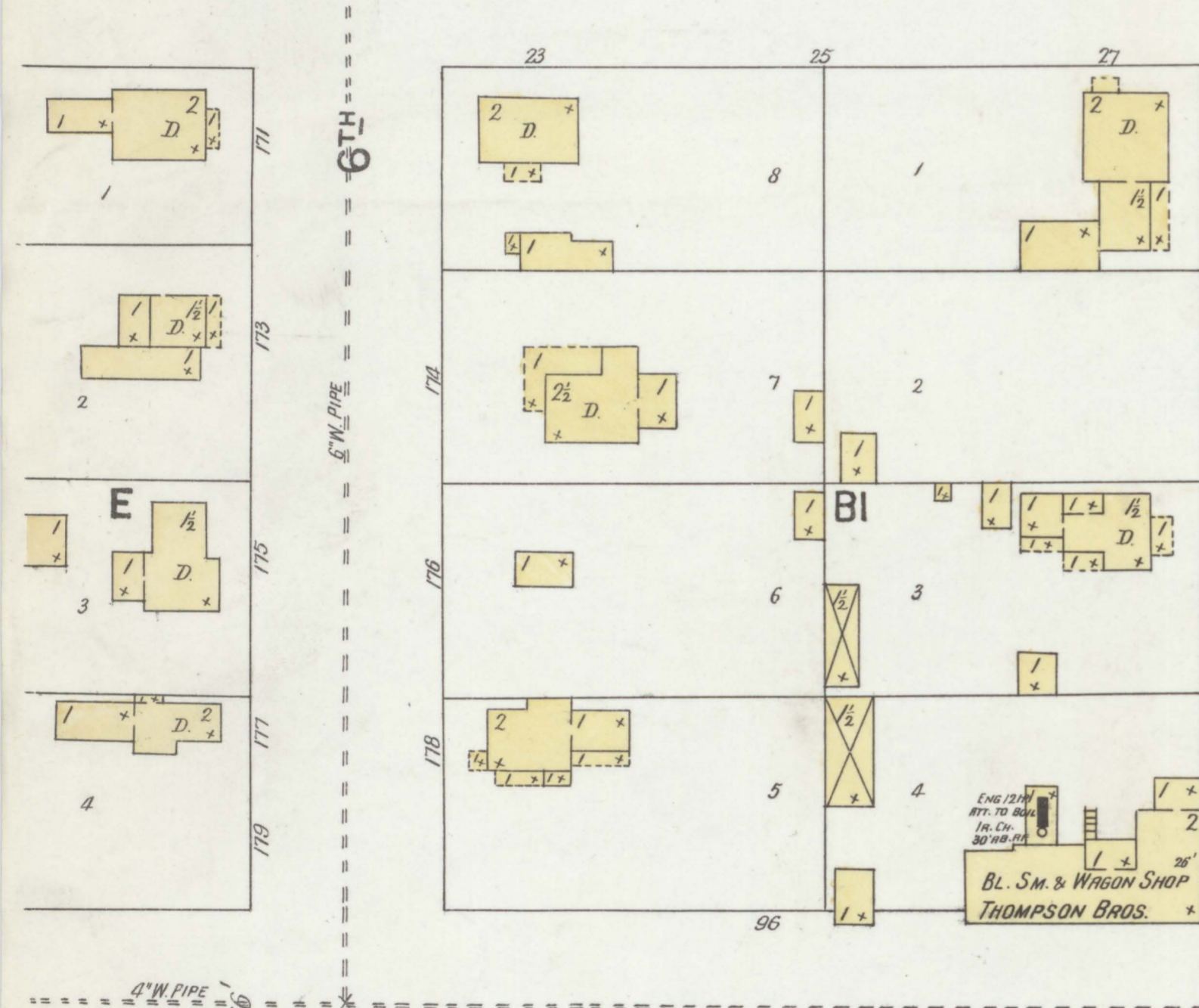
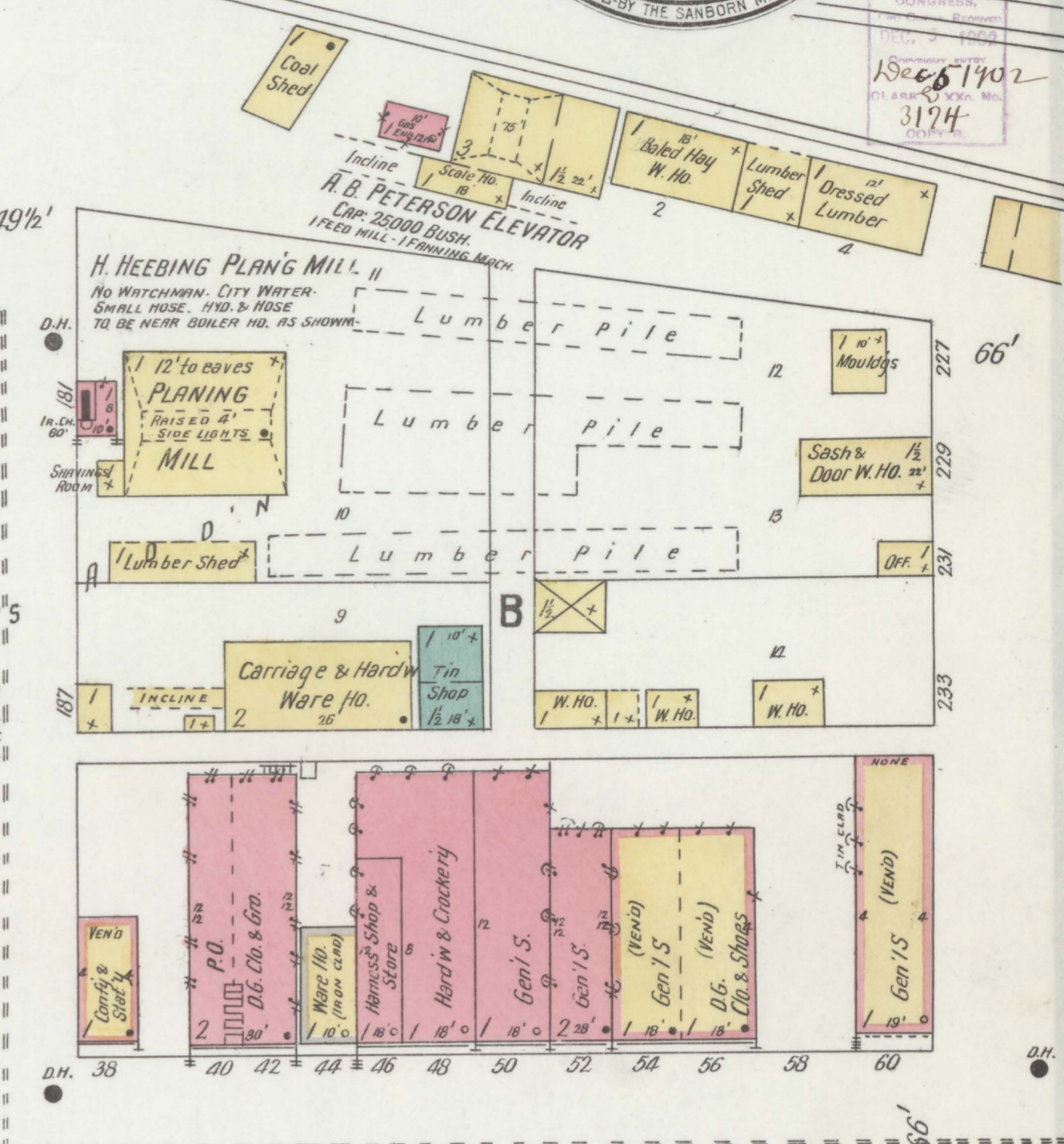
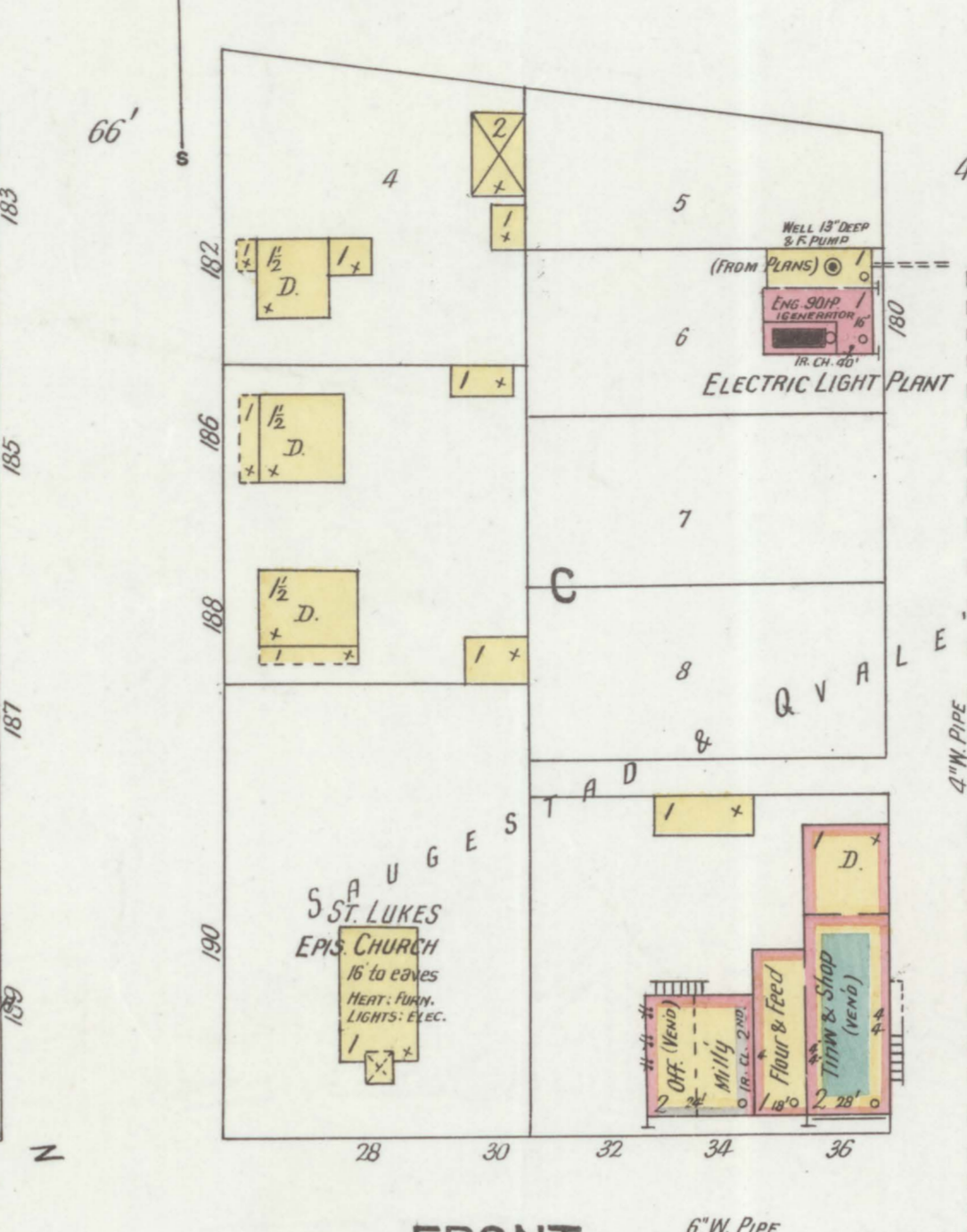
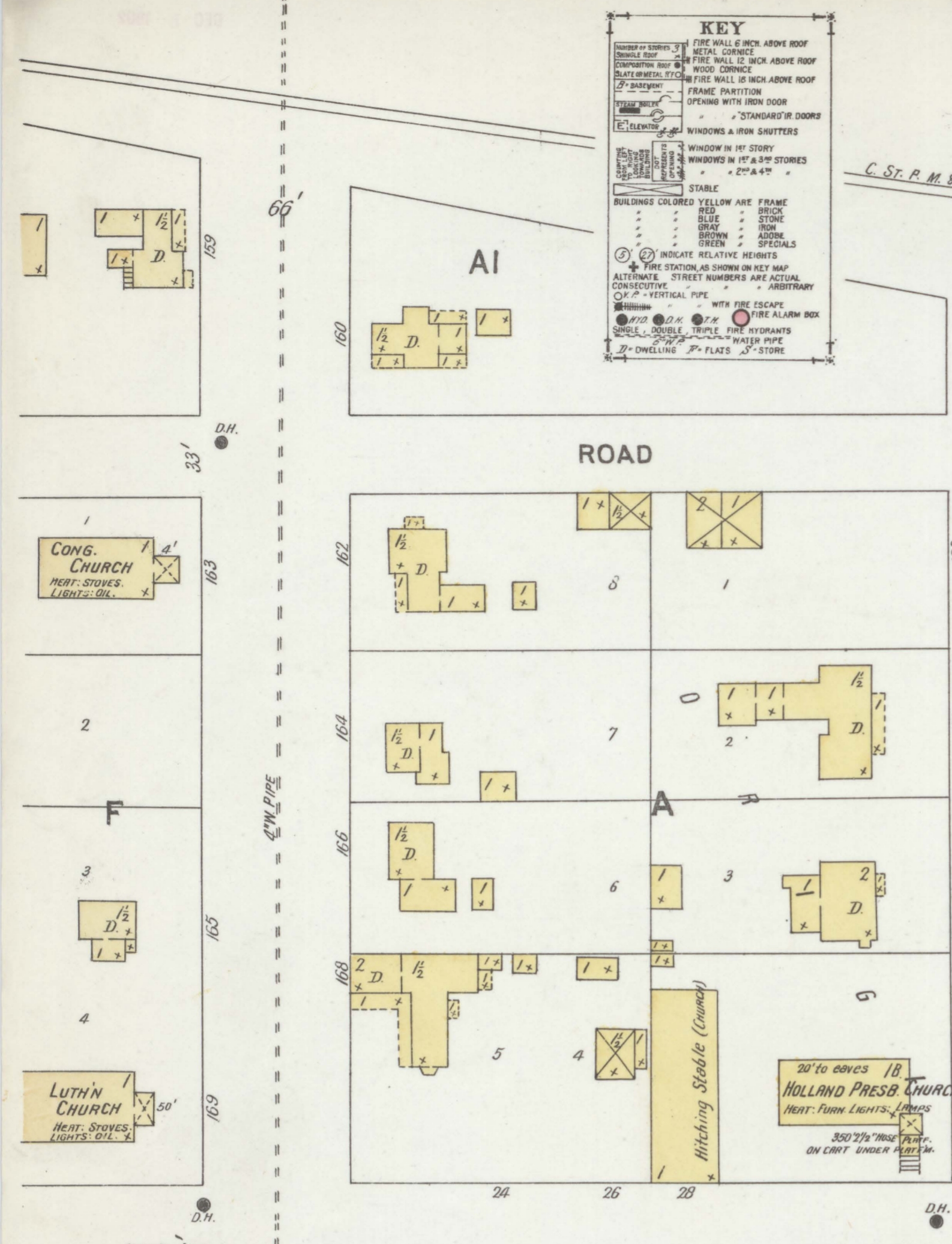
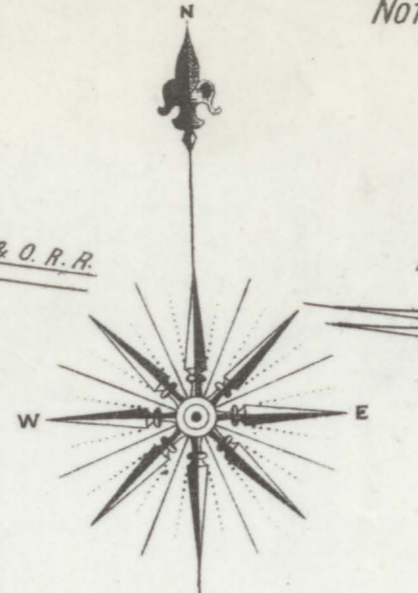




NOTE: Water facilities: 700 GAL. WATER TANK, ELEV. TO HIGH GROUND ON STEEL TRESTLE TOWER. TANK IS FILLED BY TWO FIREBOYS... Fire Dept.: VOLUNTEER, 1 COMPANY OF 25 MEMBERS. 800' 2 1/2" COTTON RUBBER LINED HOSE (TO HAVE 400' MORE) TWO HAND HOSE CARTS...

KEY: FIRE WALL 1/2 INCH ABOVE ROOF, DOUBLE ROOF, FIRE WALL 1/2 INCH ABOVE ROOF, FIRE WALL 1/2 INCH ABOVE ROOF, STANDARD IR. DOORS, WINDOWS & IRON SHUTTERS, WINDOW IN 1ST STORY, WINDOWS IN 1ST & 2ND STORIES, 2 1/2" x 4 1/2" STAIRS, BUILDINGS COLORED YELLOW ARE FRAME BRICK, BLUE BRICK, BROWN BRICK, GREEN BRICK, RED BRICK, STONE, WOOD, ASPHALT, ALUMINUM, SPECIALS, INDICATE RELATIVE HEIGHTS, FIRE STATIONS AS SHOWN ON KEY MAP, ALTERNATE STREET NUMBERS ARE ACTUAL, CONSISTENTLY, ARBITRARY, WITH FIRE ESCAPE, FIRE ALARM BOX, DOUBLE TRIPLE FIRE HYDRANTS, WATER PIPE, DWELLING, PLATS, STONE



TOWN RD

Cultivated Field Opposite

SEP. 1902  
**BALDWIN**  
WIS.

