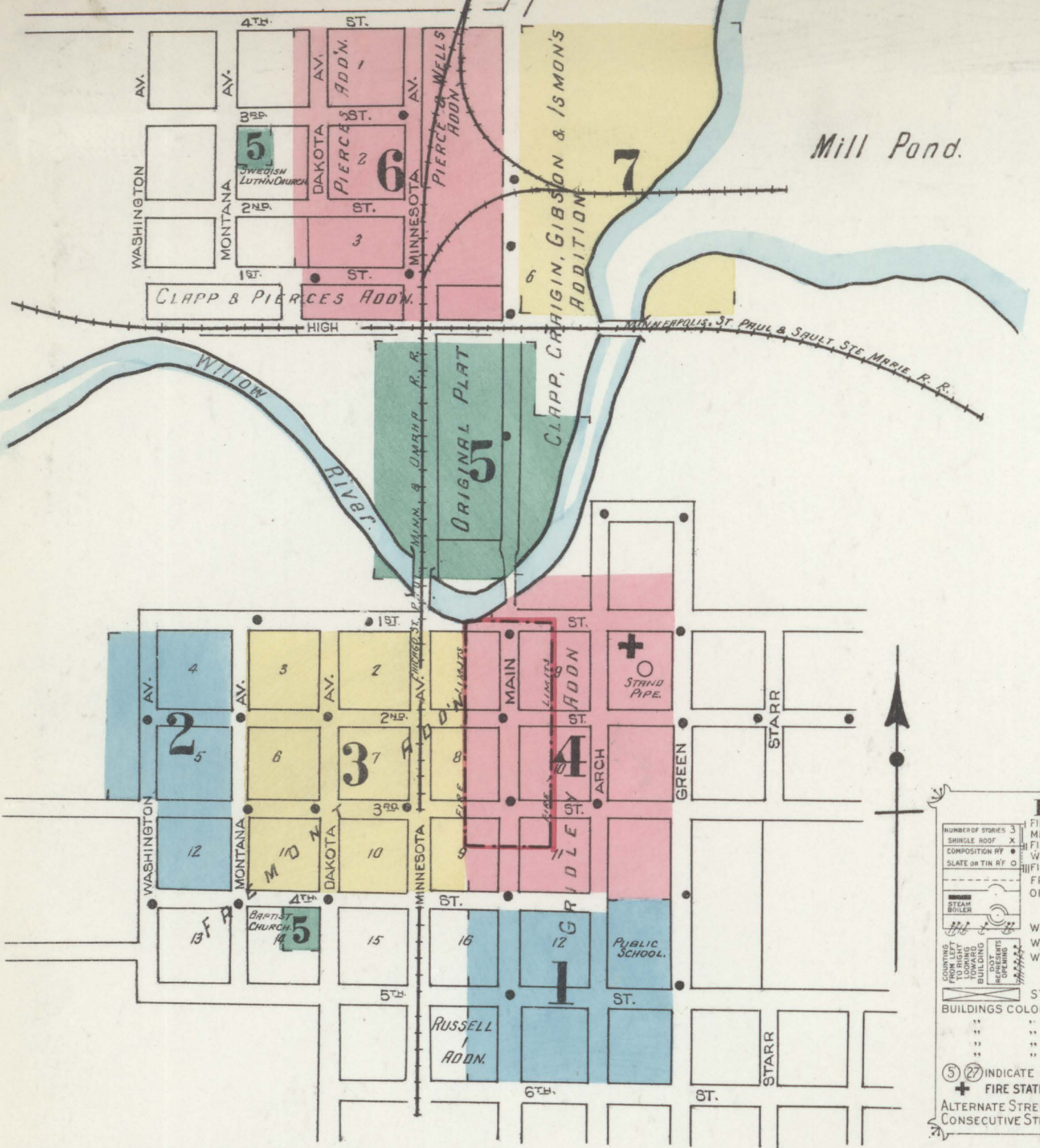




INDEX.

STREETS.	SHEET	SHEET	SHEET
Arch, 190-217	1	Second, 115-122	3
" " n'r Evang'l Ass'n Church	5	" " " " " " " " " "	4
Dakota Ave., 501-534	3	Sixth, 601-614	2
" " " " " " " " " "	6	" " " " " " " " " "	1
Fifth, 1-10	1	Third, 1-20	3
First, 7-21	3	" " " " " " " " " "	4
" " " " " " " " " "	4	" " " " " " " " " "	5
Fourth, 15-18	2	" " " " " " " " " "	6
" " " " " " " " " "	3	" " " " " " " " " "	7
" " " " " " " " " "	4	" " " " " " " " " "	8
" " " " " " " " " "	5	" " " " " " " " " "	9
" " " " " " " " " "	6	" " " " " " " " " "	10
" " " " " " " " " "	7	" " " " " " " " " "	11
" " " " " " " " " "	8	" " " " " " " " " "	12
" " " " " " " " " "	9	" " " " " " " " " "	13
" " " " " " " " " "	10	" " " " " " " " " "	14
" " " " " " " " " "	11	" " " " " " " " " "	15
" " " " " " " " " "	12	" " " " " " " " " "	16
" " " " " " " " " "	13	" " " " " " " " " "	17
" " " " " " " " " "	14	" " " " " " " " " "	18
" " " " " " " " " "	15	" " " " " " " " " "	19
" " " " " " " " " "	16	" " " " " " " " " "	20
" " " " " " " " " "	17	" " " " " " " " " "	21
" " " " " " " " " "	18	" " " " " " " " " "	22
" " " " " " " " " "	19	" " " " " " " " " "	23
" " " " " " " " " "	20	" " " " " " " " " "	24
" " " " " " " " " "	21	" " " " " " " " " "	25
" " " " " " " " " "	22	" " " " " " " " " "	26
" " " " " " " " " "	23	" " " " " " " " " "	27
" " " " " " " " " "	24	" " " " " " " " " "	28
" " " " " " " " " "	25	" " " " " " " " " "	29
" " " " " " " " " "	26	" " " " " " " " " "	30
" " " " " " " " " "	27	" " " " " " " " " "	31
" " " " " " " " " "	28	" " " " " " " " " "	32
" " " " " " " " " "	29	" " " " " " " " " "	33
" " " " " " " " " "	30	" " " " " " " " " "	34
" " " " " " " " " "	31	" " " " " " " " " "	35
" " " " " " " " " "	32	" " " " " " " " " "	36
" " " " " " " " " "	33	" " " " " " " " " "	37
" " " " " " " " " "	34	" " " " " " " " " "	38
" " " " " " " " " "	35	" " " " " " " " " "	39
" " " " " " " " " "	36	" " " " " " " " " "	40
" " " " " " " " " "	37	" " " " " " " " " "	41
" " " " " " " " " "	38	" " " " " " " " " "	42
" " " " " " " " " "	39	" " " " " " " " " "	43
" " " " " " " " " "	40	" " " " " " " " " "	44
" " " " " " " " " "	41	" " " " " " " " " "	45
" " " " " " " " " "	42	" " " " " " " " " "	46
" " " " " " " " " "	43	" " " " " " " " " "	47
" " " " " " " " " "	44	" " " " " " " " " "	48
" " " " " " " " " "	45	" " " " " " " " " "	49
" " " " " " " " " "	46	" " " " " " " " " "	50
" " " " " " " " " "	47	" " " " " " " " " "	51
" " " " " " " " " "	48	" " " " " " " " " "	52
" " " " " " " " " "	49	" " " " " " " " " "	53
" " " " " " " " " "	50	" " " " " " " " " "	54
" " " " " " " " " "	51	" " " " " " " " " "	55
" " " " " " " " " "	52	" " " " " " " " " "	56
" " " " " " " " " "	53	" " " " " " " " " "	57
" " " " " " " " " "	54	" " " " " " " " " "	58
" " " " " " " " " "	55	" " " " " " " " " "	59
" " " " " " " " " "	56	" " " " " " " " " "	60
" " " " " " " " " "	57	" " " " " " " " " "	61
" " " " " " " " " "	58	" " " " " " " " " "	62
" " " " " " " " " "	59	" " " " " " " " " "	63
" " " " " " " " " "	60	" " " " " " " " " "	64
" " " " " " " " " "	61	" " " " " " " " " "	65
" " " " " " " " " "	62	" " " " " " " " " "	66
" " " " " " " " " "	63	" " " " " " " " " "	67
" " " " " " " " " "	64	" " " " " " " " " "	68
" " " " " " " " " "	65	" " " " " " " " " "	69
" " " " " " " " " "	66	" " " " " " " " " "	70
" " " " " " " " " "	67	" " " " " " " " " "	71
" " " " " " " " " "	68	" " " " " " " " " "	72
" " " " " " " " " "	69	" " " " " " " " " "	73
" " " " " " " " " "	70	" " " " " " " " " "	74
" " " " " " " " " "	71	" " " " " " " " " "	75
" " " " " " " " " "	72	" " " " " " " " " "	76
" " " " " " " " " "	73	" " " " " " " " " "	77
" " " " " " " " " "	74	" " " " " " " " " "	78
" " " " " " " " " "	75	" " " " " " " " " "	79
" " " " " " " " " "	76	" " " " " " " " " "	80
" " " " " " " " " "	77	" " " " " " " " " "	81
" " " " " " " " " "	78	" " " " " " " " " "	82
" " " " " " " " " "	79	" " " " " " " " " "	83
" " " " " " " " " "	80	" " " " " " " " " "	84
" " " " " " " " " "	81	" " " " " " " " " "	85
" " " " " " " " " "	82	" " " " " " " " " "	86
" " " " " " " " " "	83	" " " " " " " " " "	87
" " " " " " " " " "	84	" " " " " " " " " "	88
" " " " " " " " " "	85	" " " " " " " " " "	89
" " " " " " " " " "	86	" " " " " " " " " "	90
" " " " " " " " " "	87	" " " " " " " " " "	91
" " " " " " " " " "	88	" " " " " " " " " "	92
" " " " " " " " " "	89	" " " " " " " " " "	93
" " " " " " " " " "	90	" " " " " " " " " "	94
" " " " " " " " " "	91	" " " " " " " " " "	95
" " " " " " " " " "	92	" " " " " " " " " "	96
" " " " " " " " " "	93	" " " " " " " " " "	97
" " " " " " " " " "	94	" " " " " " " " " "	98
" " " " " " " " " "	95	" " " " " " " " " "	99
" " " " " " " " " "	96	" " " " " " " " " "	100



KEY

FIRE WALL IN ADV ROOF
METAL CORNICE
FIRE WALL IN ADV ROOF
WOOD CORNICE
FIRE WALL IN ADV ROOF
FRAME PARTITION
OPENING WITH IRON DOOR
IRON DOOR
STANDARD
WINDOWS & IRON SHUTTERS
WINDOW 1ST STORY
WINDOWS 1ST & 2ND STORIES
2158.47"

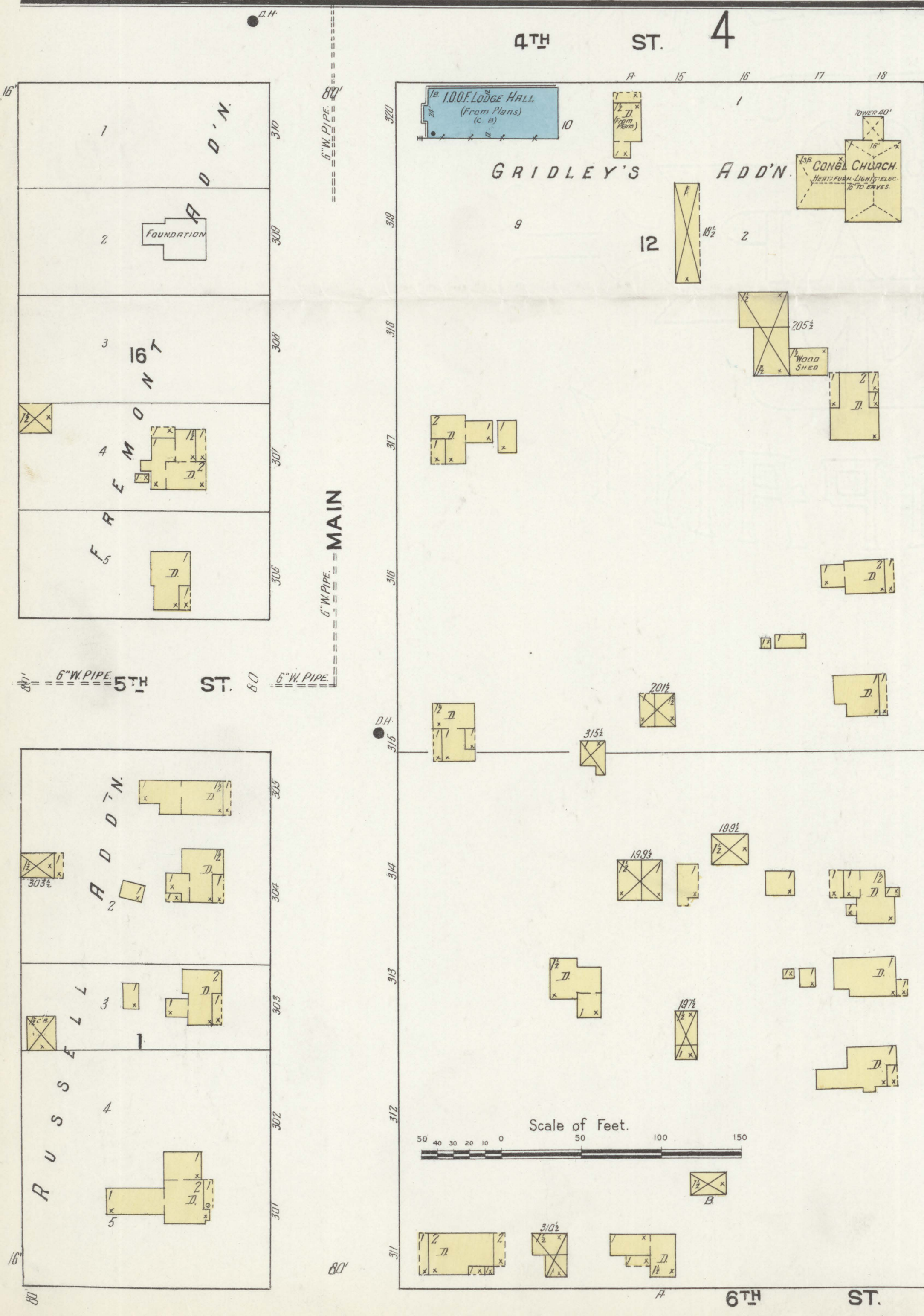
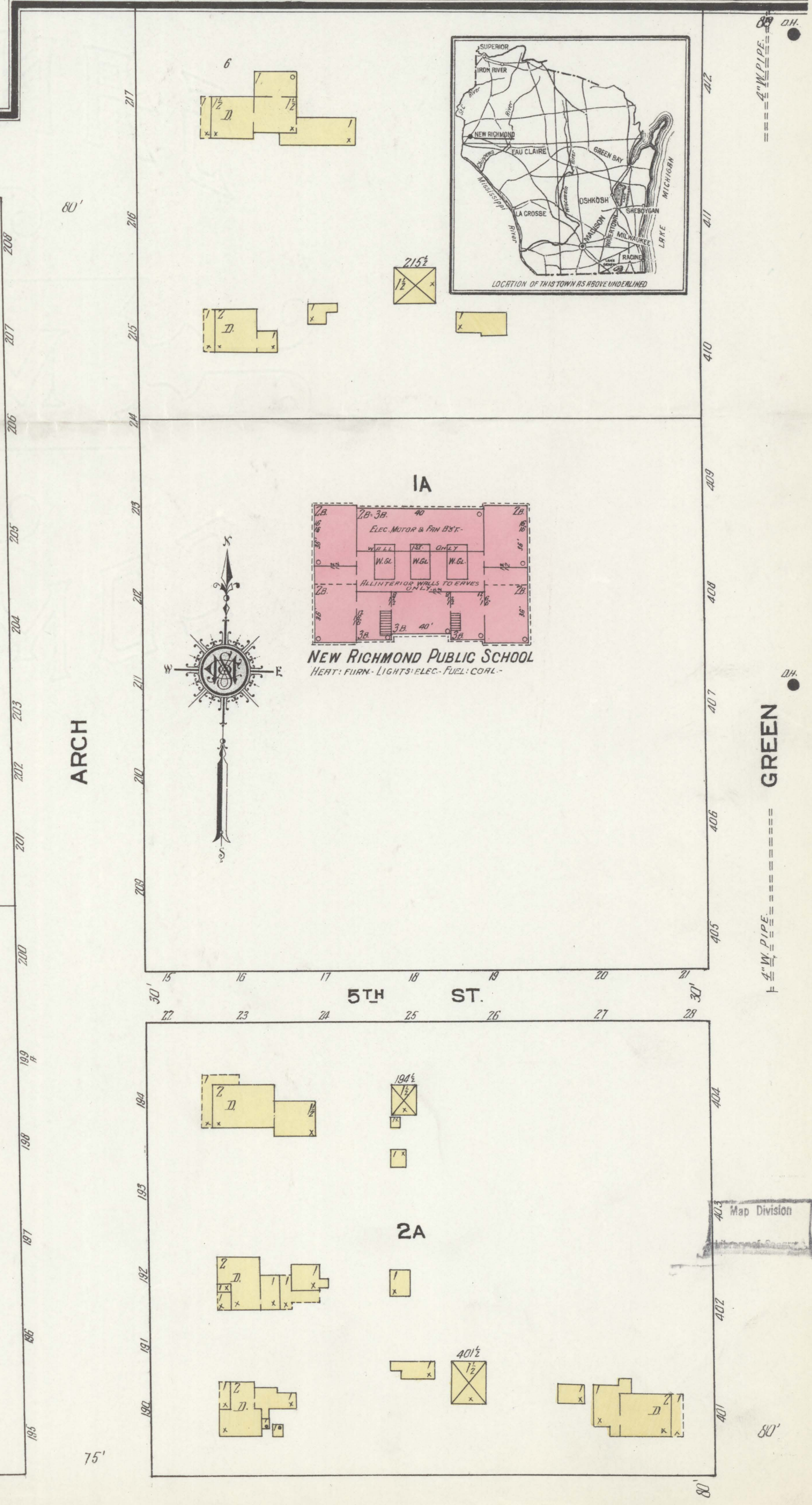
STABLE
BUILDINGS COLORED YELLOW ARE FRAME
RED BRICK
BLUE STONE
GRAY IRON
BROWN FIRE PROOF

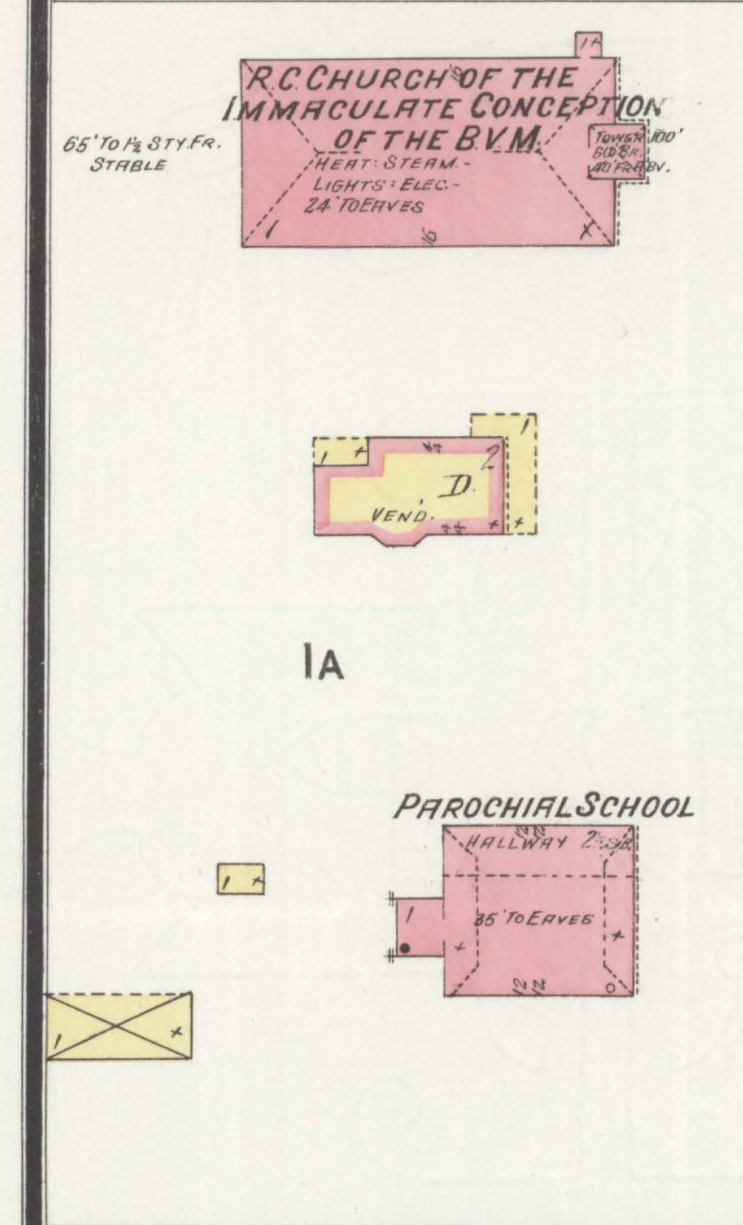
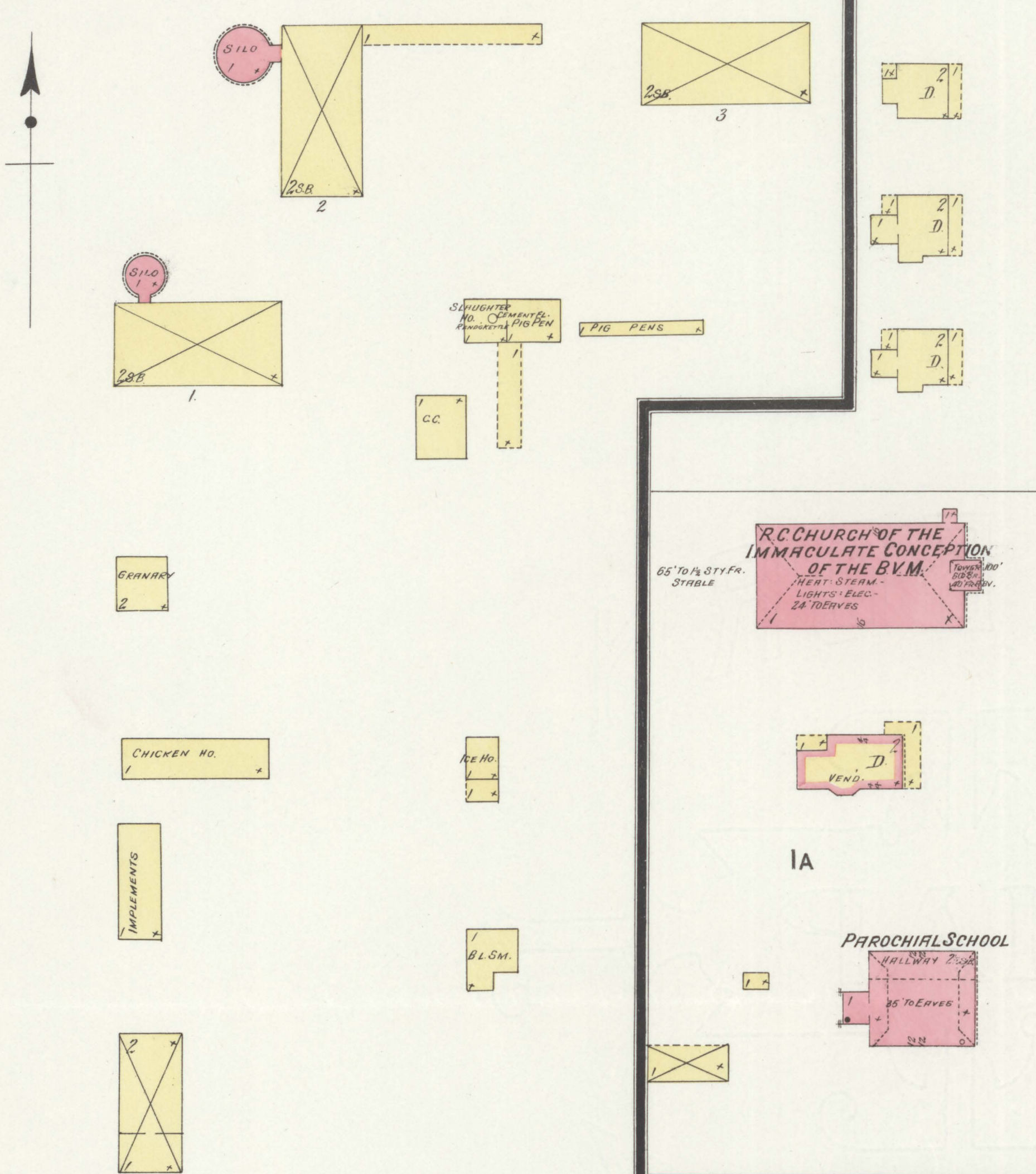
INDICATE RELATIVE HEIGHTS
FIRE STATION, AS SHOWN ON KEY MAP
ALTERNATE STREET NUMBERS ARE ACTUAL
CONSECUTIVE STREET NOS ARE ARBITRARY

WATER FACILITIES:
Municipal ownership, direct & gravity pressure. - 1 triplex double acting Stillwell Bierce & Smith boiler pump 7' x 8' capacity 450,000 gals. per diam. Driven by a 30 HP electric motor belt connected having 8' suction, 6' discharge into 8' main h. stand pipe, also an auxiliary steam plant composed of two 80 HP boilers, one of which is fit for service. - 1 Fairbanks-Morse duplex pump 14' x 12' capacity, 75,000 gals. per diam. 8' suction, 6' discharge into 8' main. - These pumps draw from two 80' wells & supply stand pipe, capacity 50,000 gals. base of stand pipe elev. 30' above business portion of town. - 2,400' 4", 11,750' 6", 1,940' 8" cast iron mains, 33 double hydrants. - Average pressure 53 to 62 lbs. - Fire pressure 62 to 82 lbs. - Average daily consumption 300,000 gals. - Original mains were laid in 1893.

FIRE DEPT
Volunteer Co. organized, 18 members. - 2 H. & L. Trucks, one carrying one 16' two 14' one 40' extension & one 18' ladders, two Babcock chemicals, one 1" nozzle, two hose leak stops, 1 Siamese hose Conn. - One carrying one 30' extension, one 20' & one 18' ladders. - 1 hose reel carrying 500' 2 1/2" C.R.L. hose, one 1" nozzle, 500' hose held in reserve, 1000' 2 1/2" C.R.L. hose in all & in good condition. - Fire alarm bell on stand pipe.

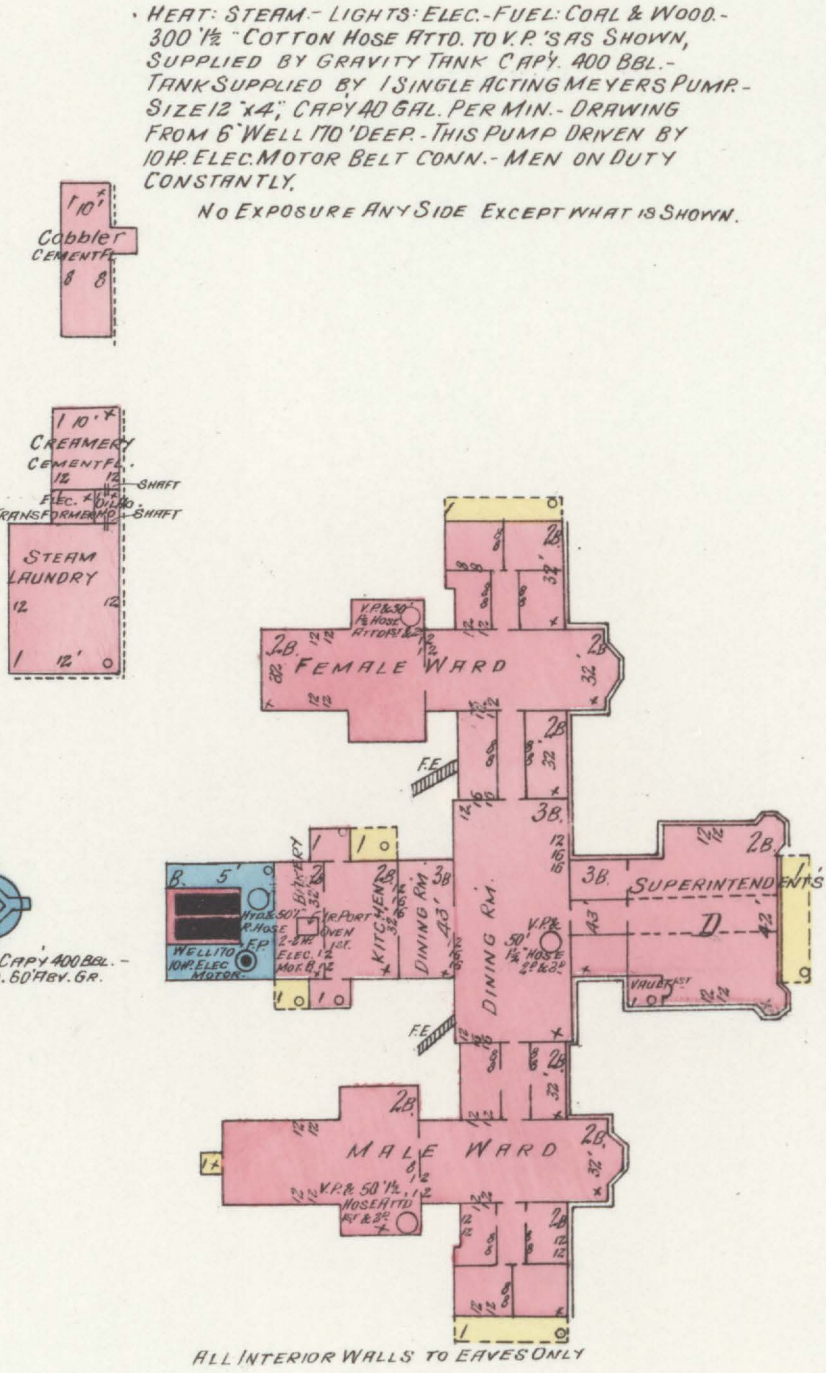
Topography level - Streets not paved - Public lights - elec. Ware & 88 small lamps.
Water mains were obtained verbally from supt. as records were not obtainable. - Large daily consumption is due to the fact that - Railroad procures all water from city.





ST. CROIX COUNTY ASYLUM

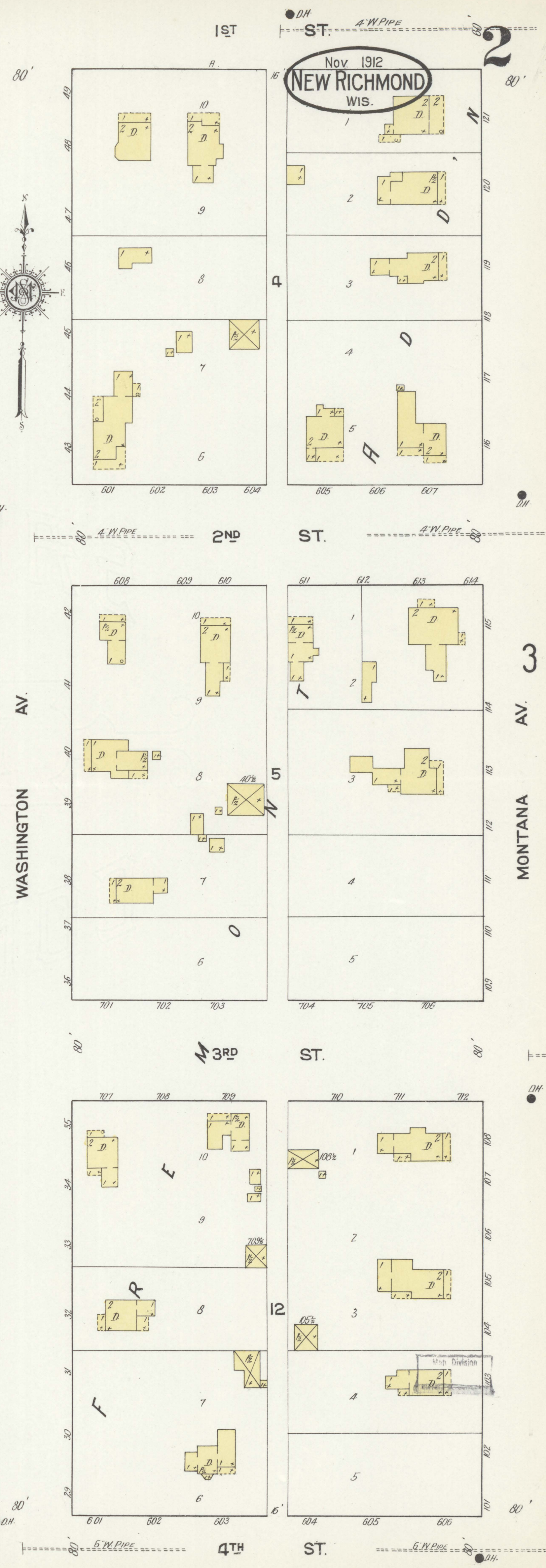
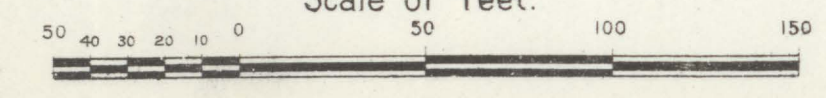
HEAT - STEAM - LIGHTS - ELEC. - FUEL - COAL & WOOD - 300 FT. COTTON HOSE FITTED TO K.P.'S AS SHOWN, SUPPLIED BY GRAVITY TANK CAPY. 400 GAL. TANK SUPPLIED BY 1 SINGLE ACTING MEYERS PUMP - SIZE 12 X 4, CAPY 40 GAL. PER MIN. - DRAWING FROM 6' WELL 170' DEEP. THIS PUMP DRIVEN BY 10 HP. ELEC. MOTOR BELT CONN. - MEN ON DUTY CONSTANTLY.
NO EXPOSURE ANY SIDE EXCEPT WHAT IS SHOWN.



St Croix County Poor House
HEAT - LIGHTS - ELEC. - NO FIRE ALARMS

ALL INTERIOR WALLS TO CEILING ONLY

Scale of Feet.

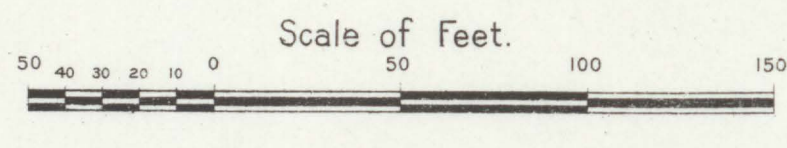
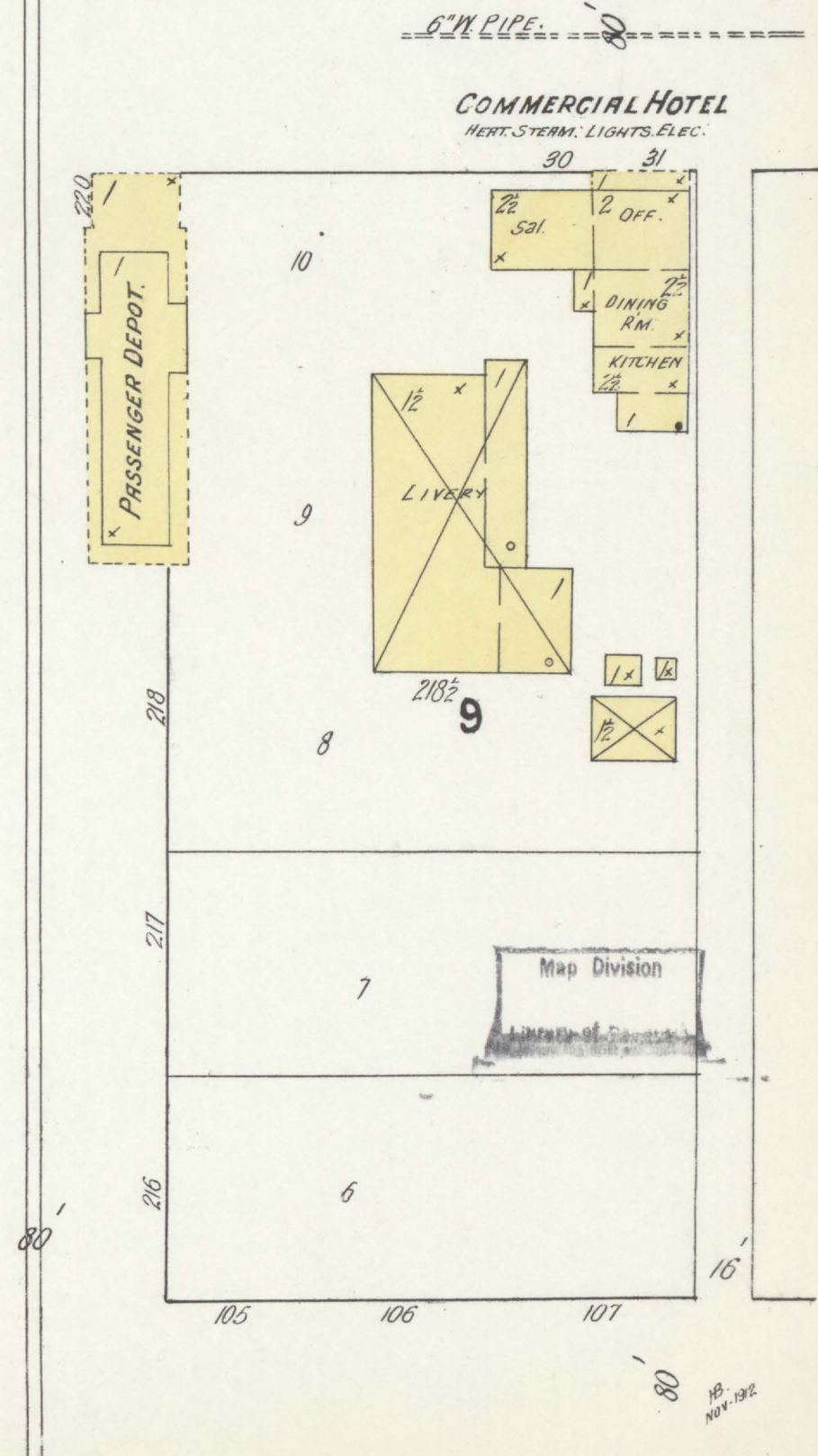
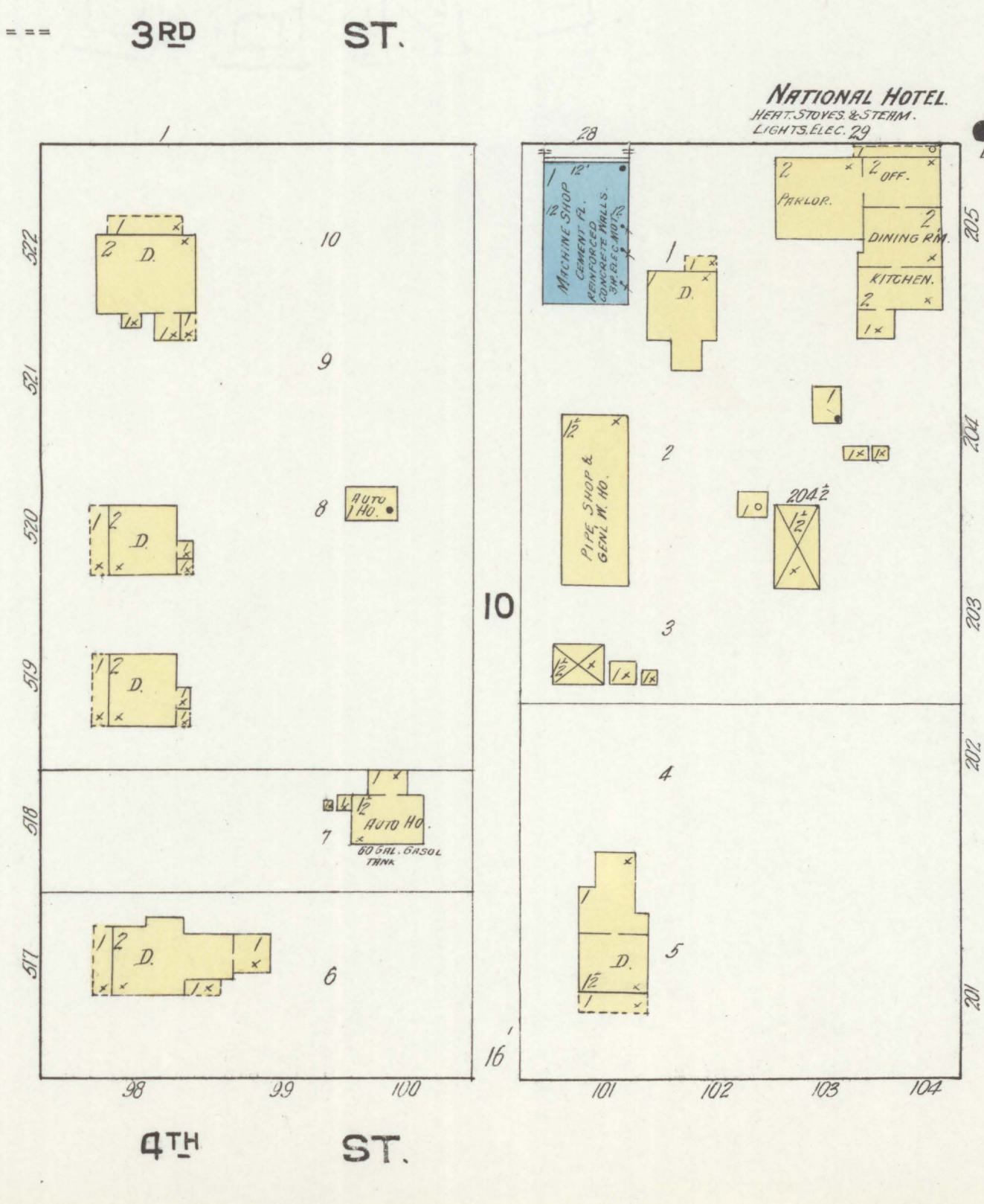
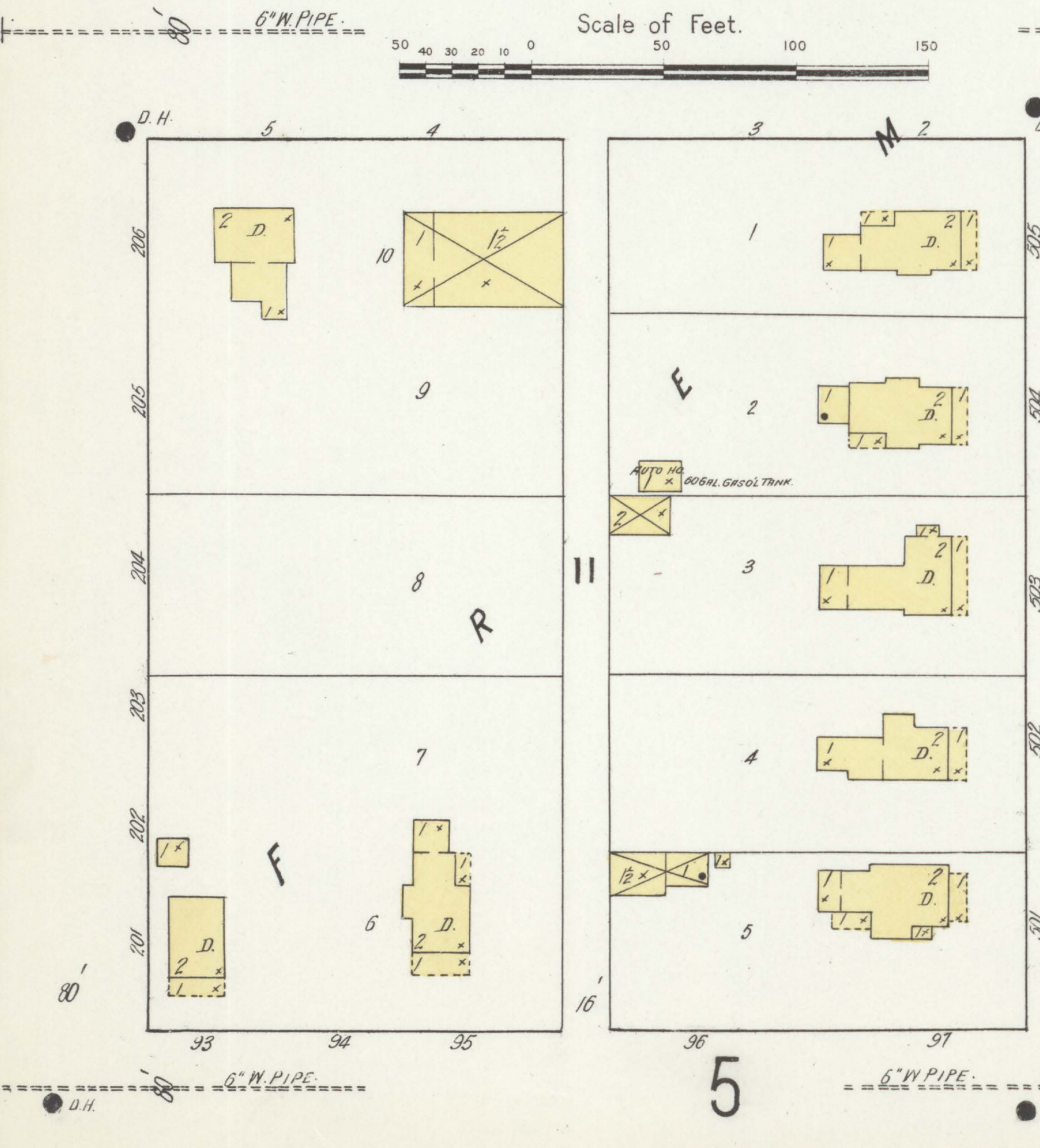
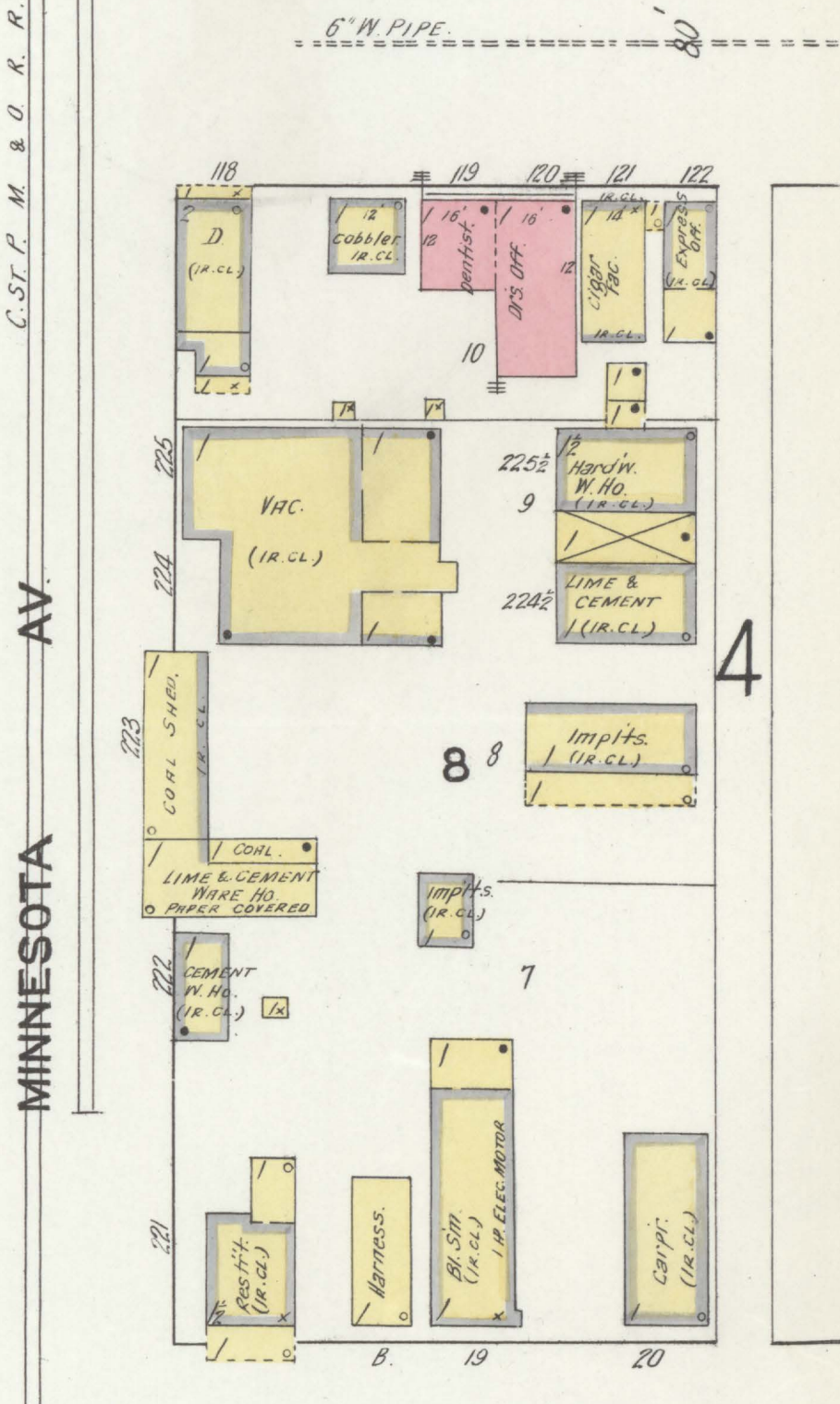
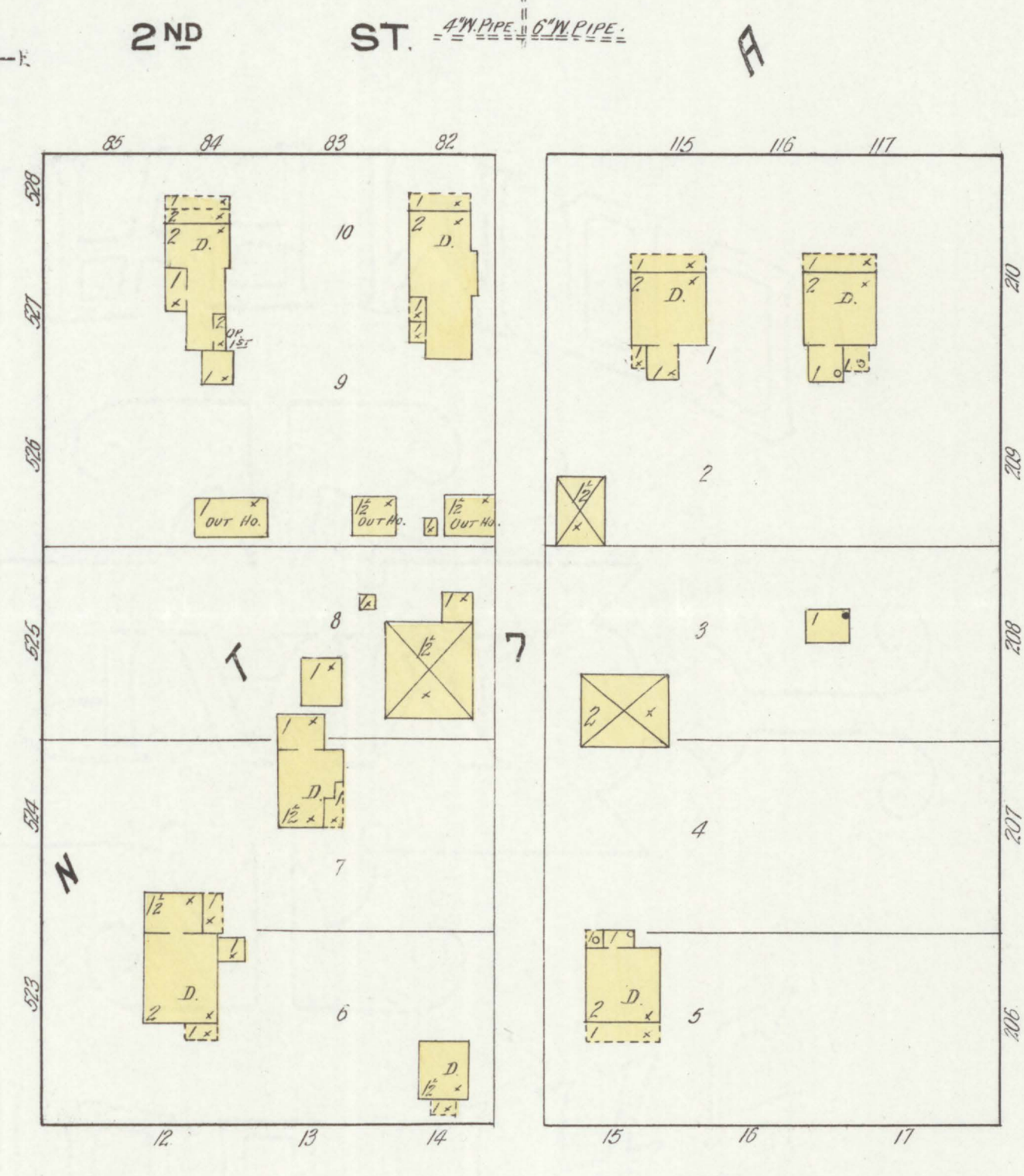
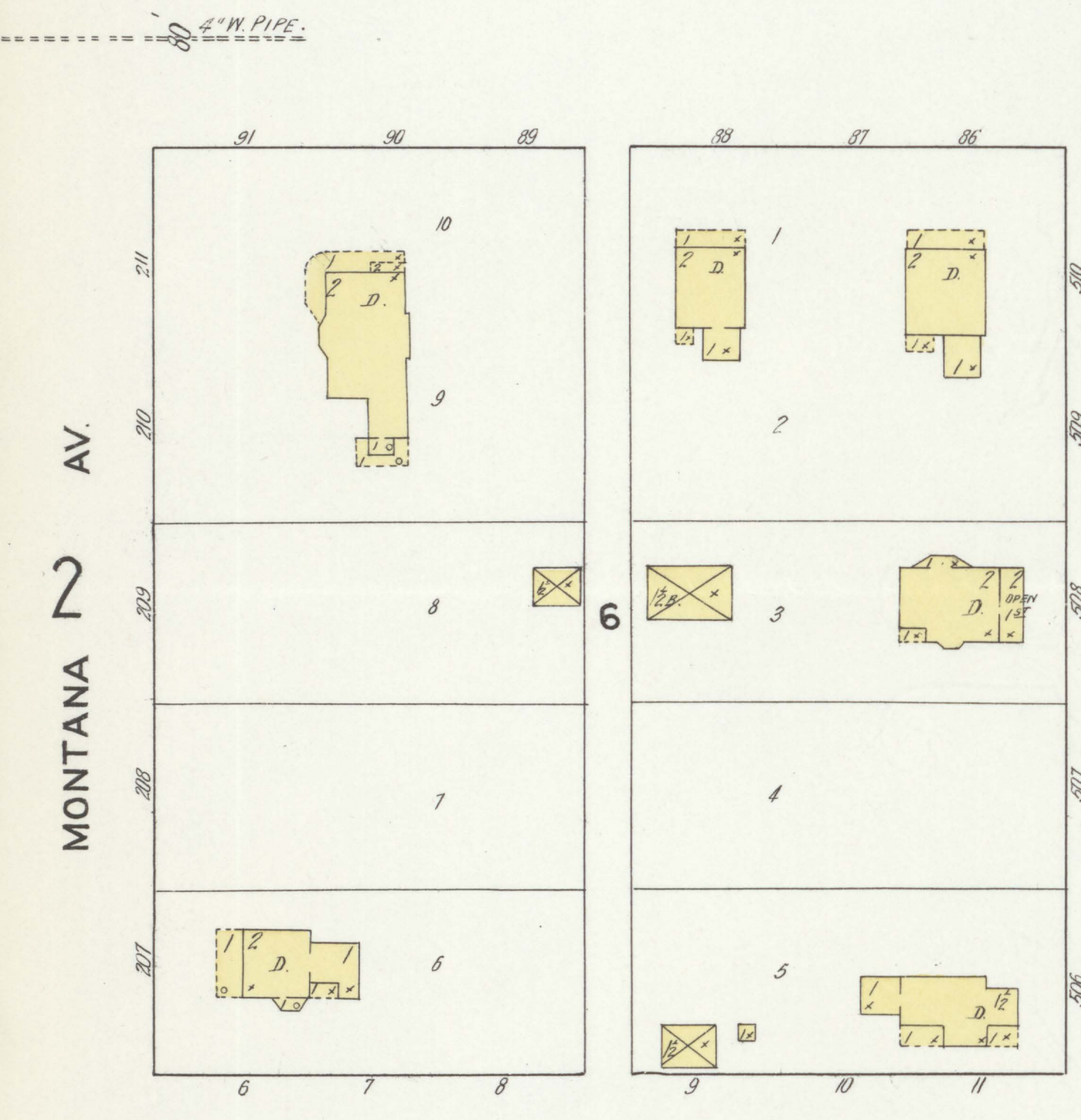
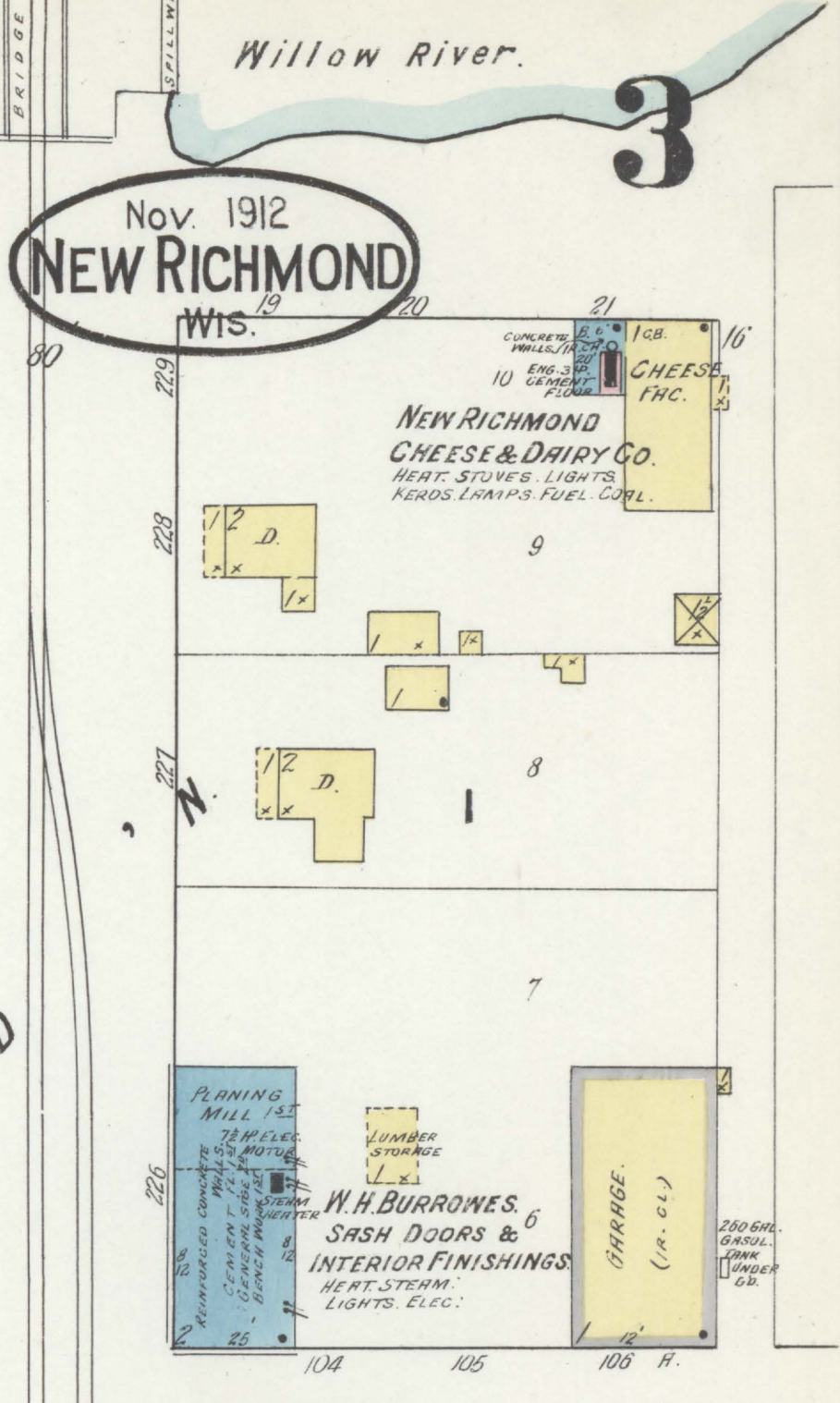
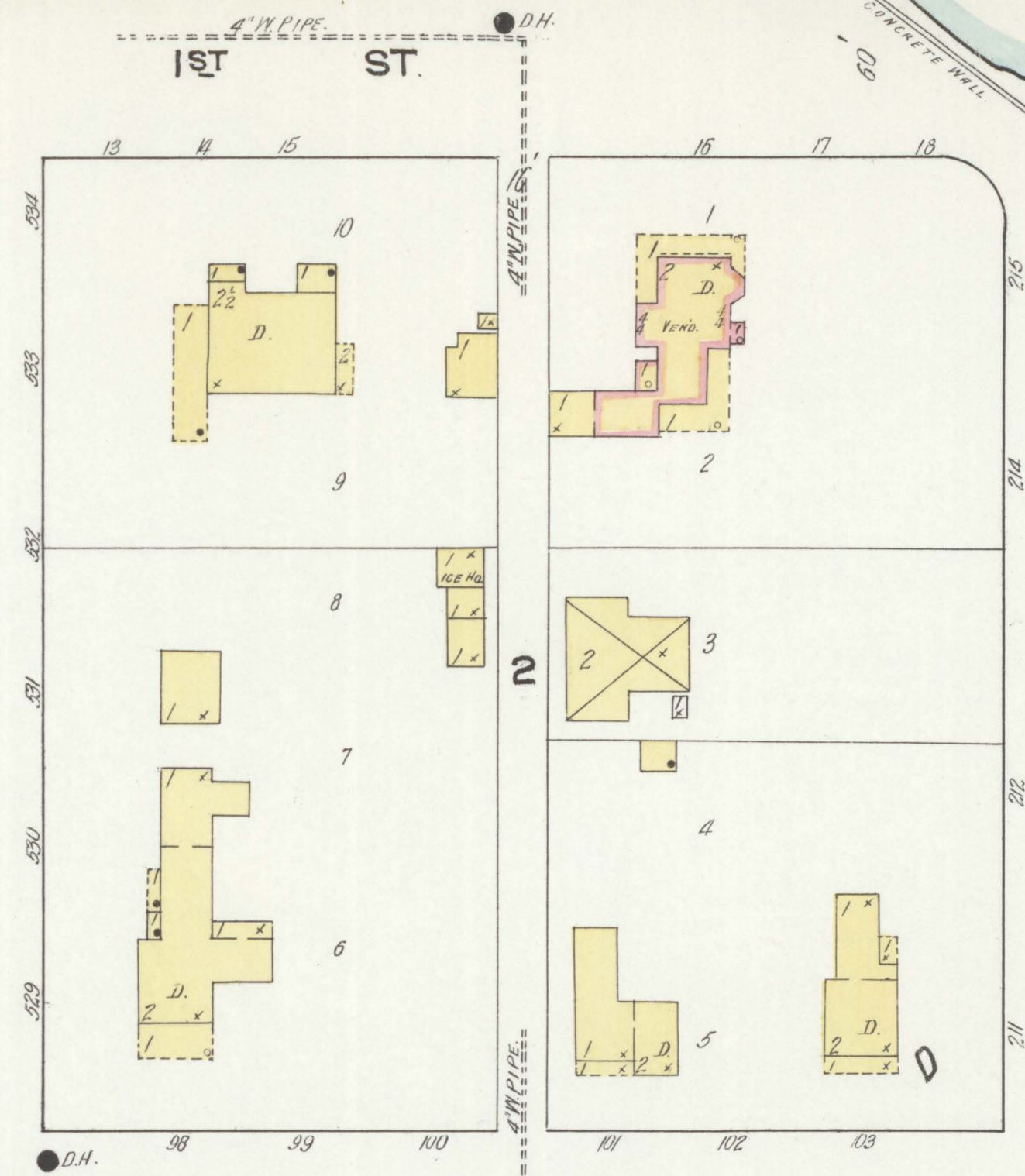
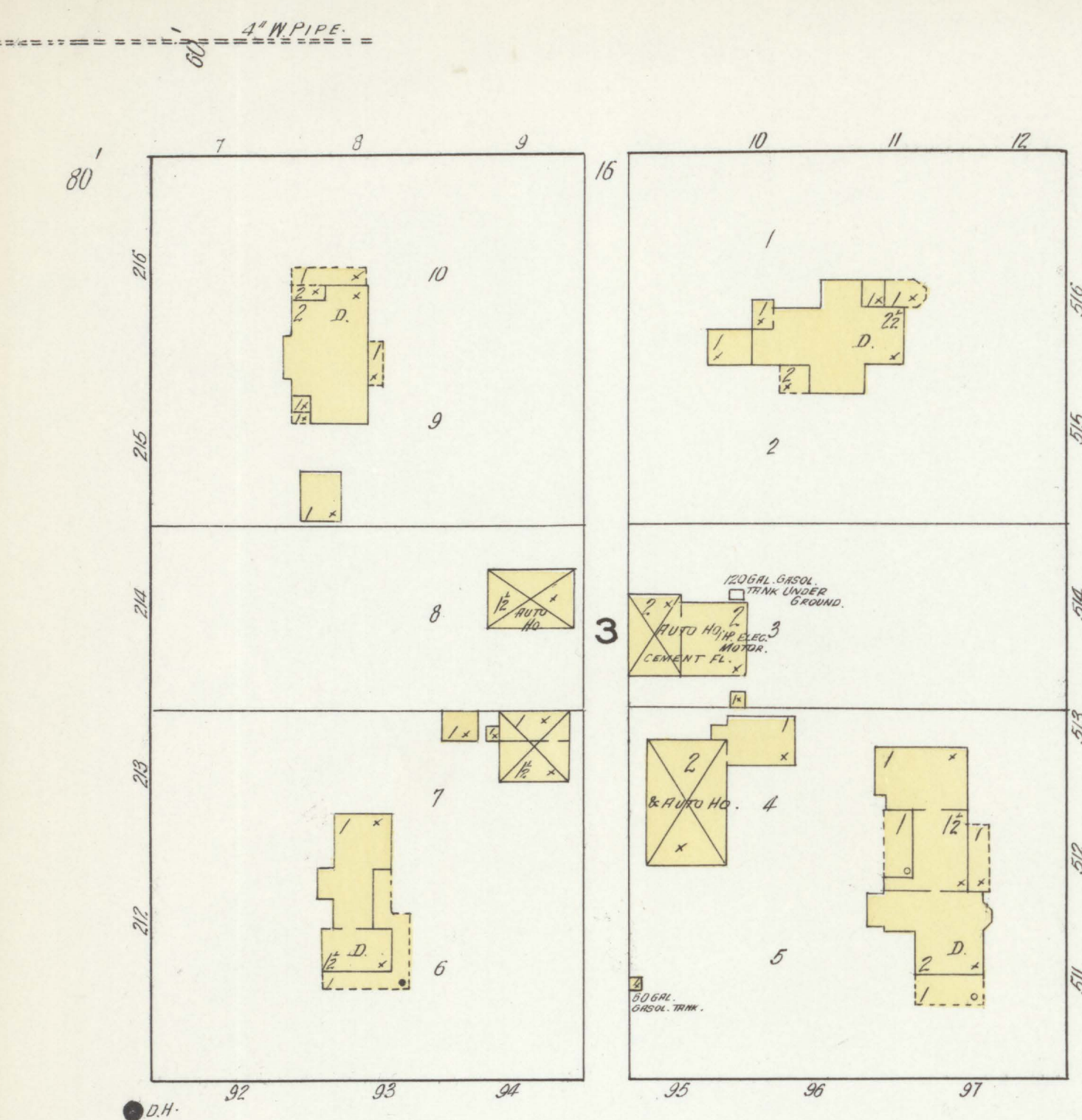


Nov 1912
NEW RICHMOND
WIS.



D.H.

D.H.



3

4

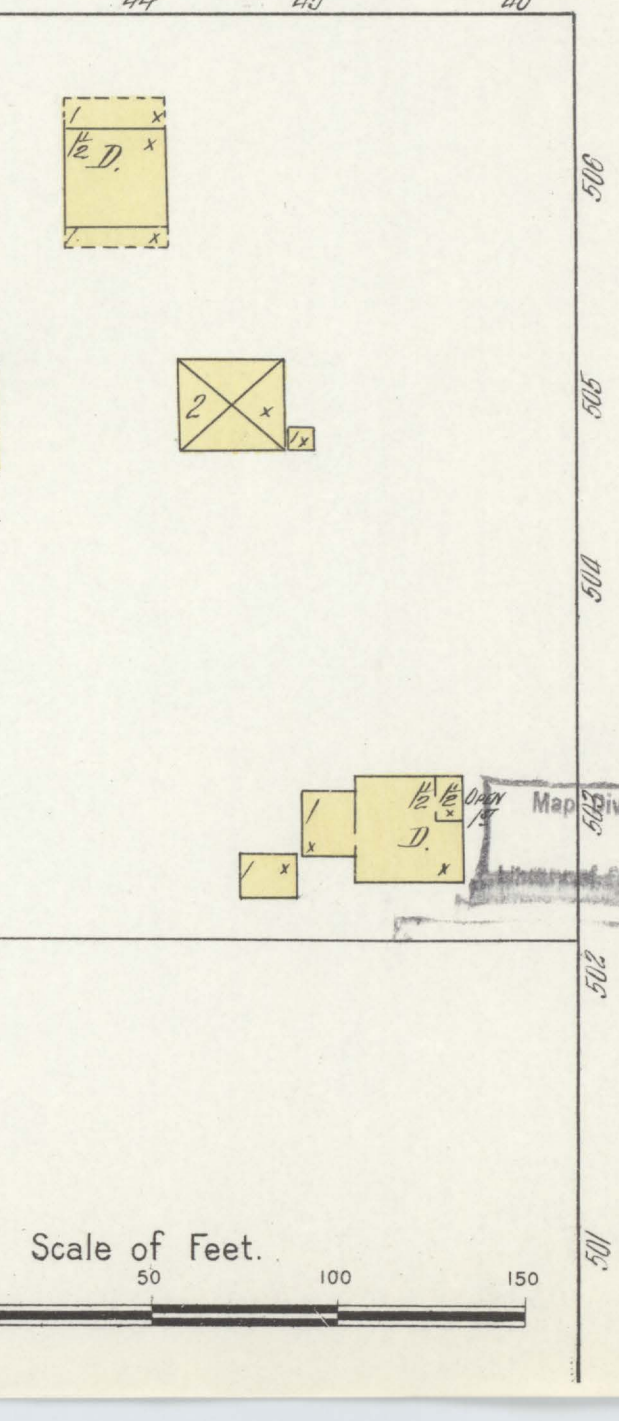
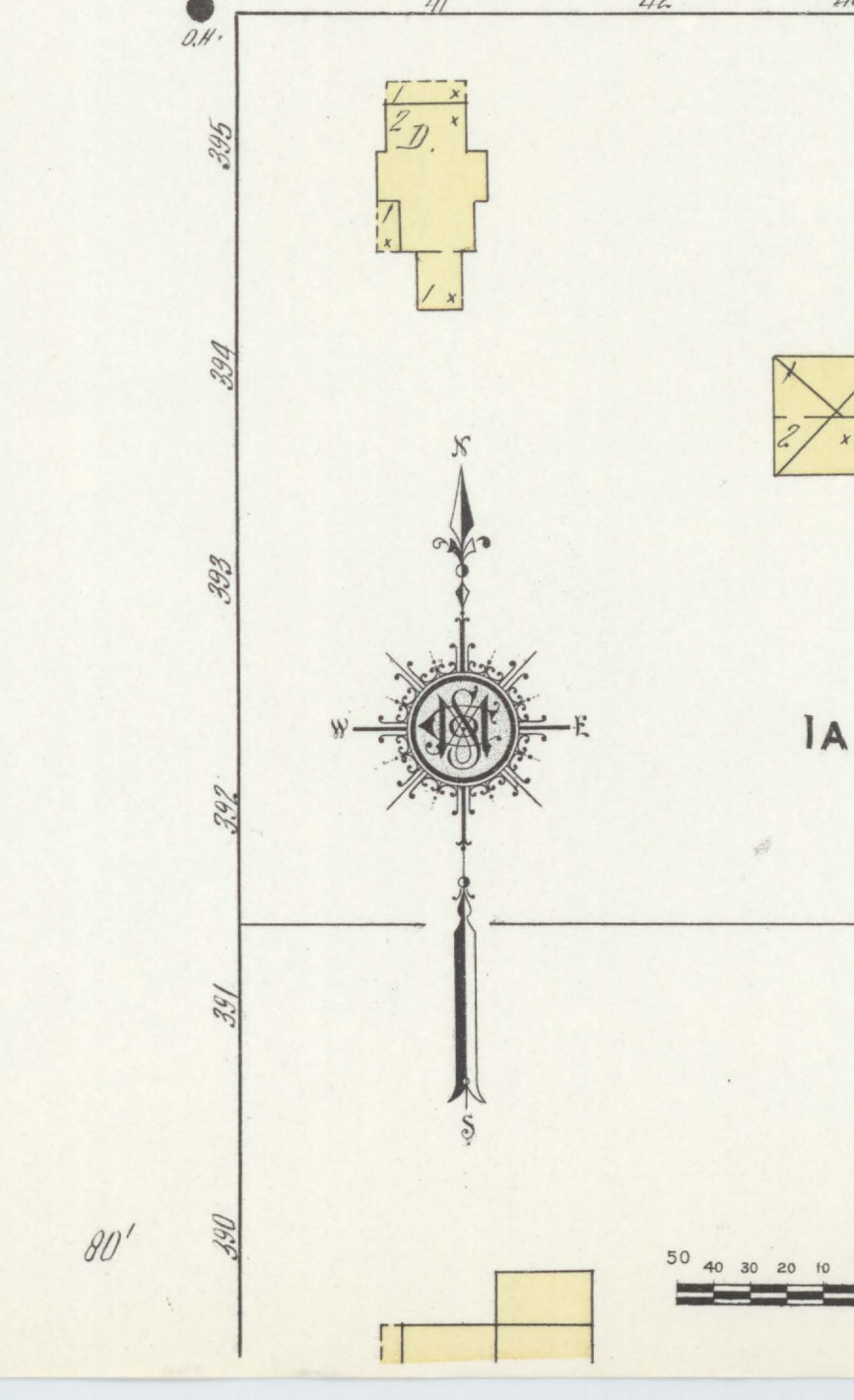
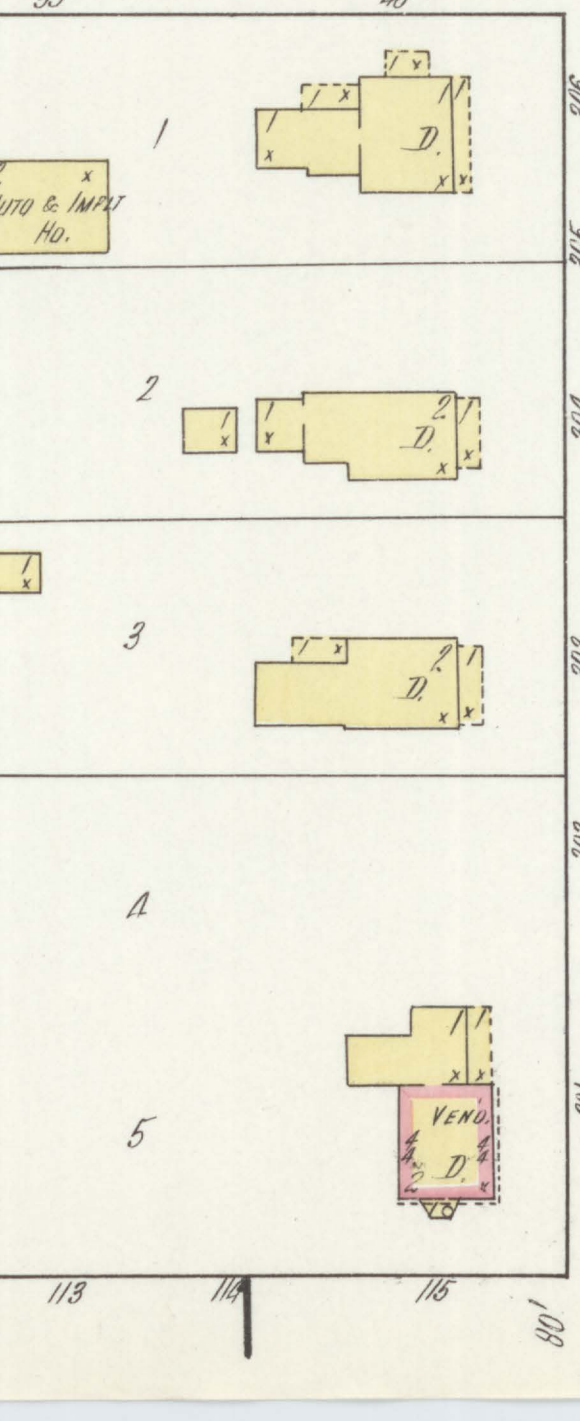
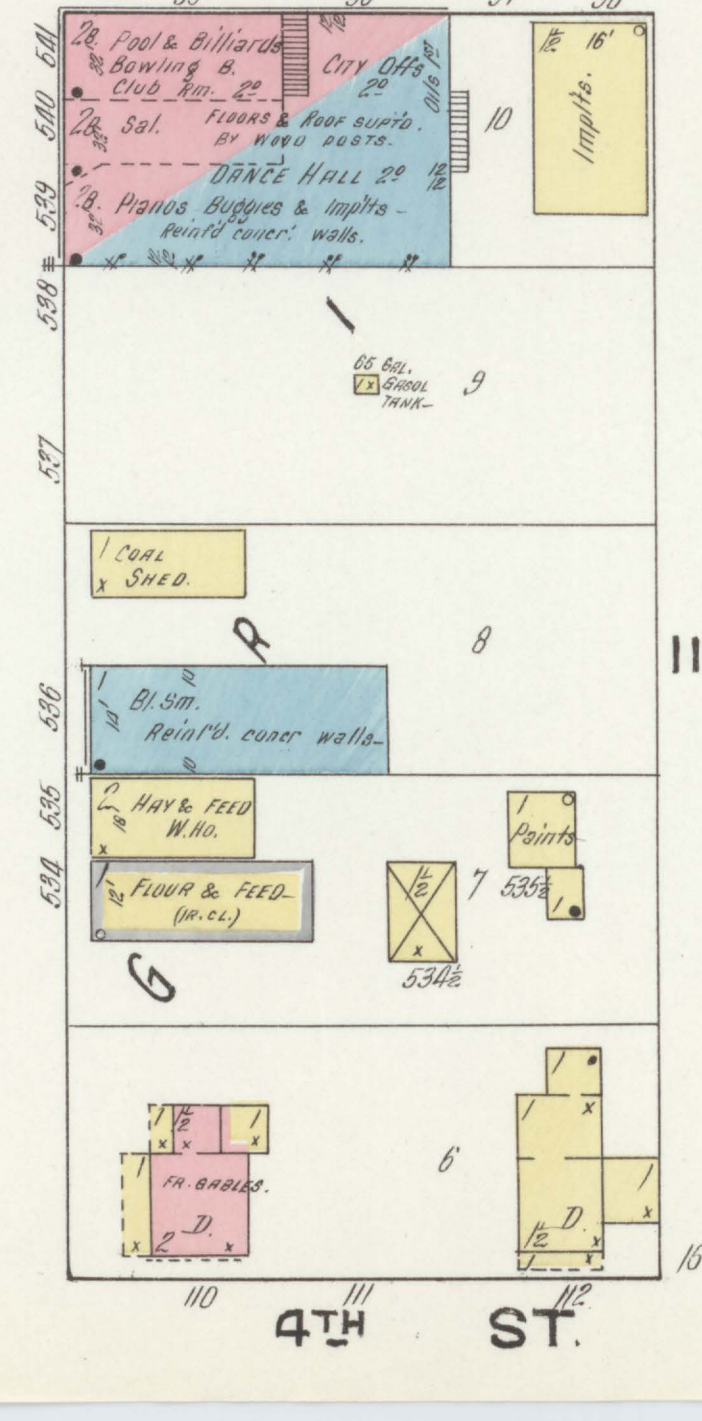
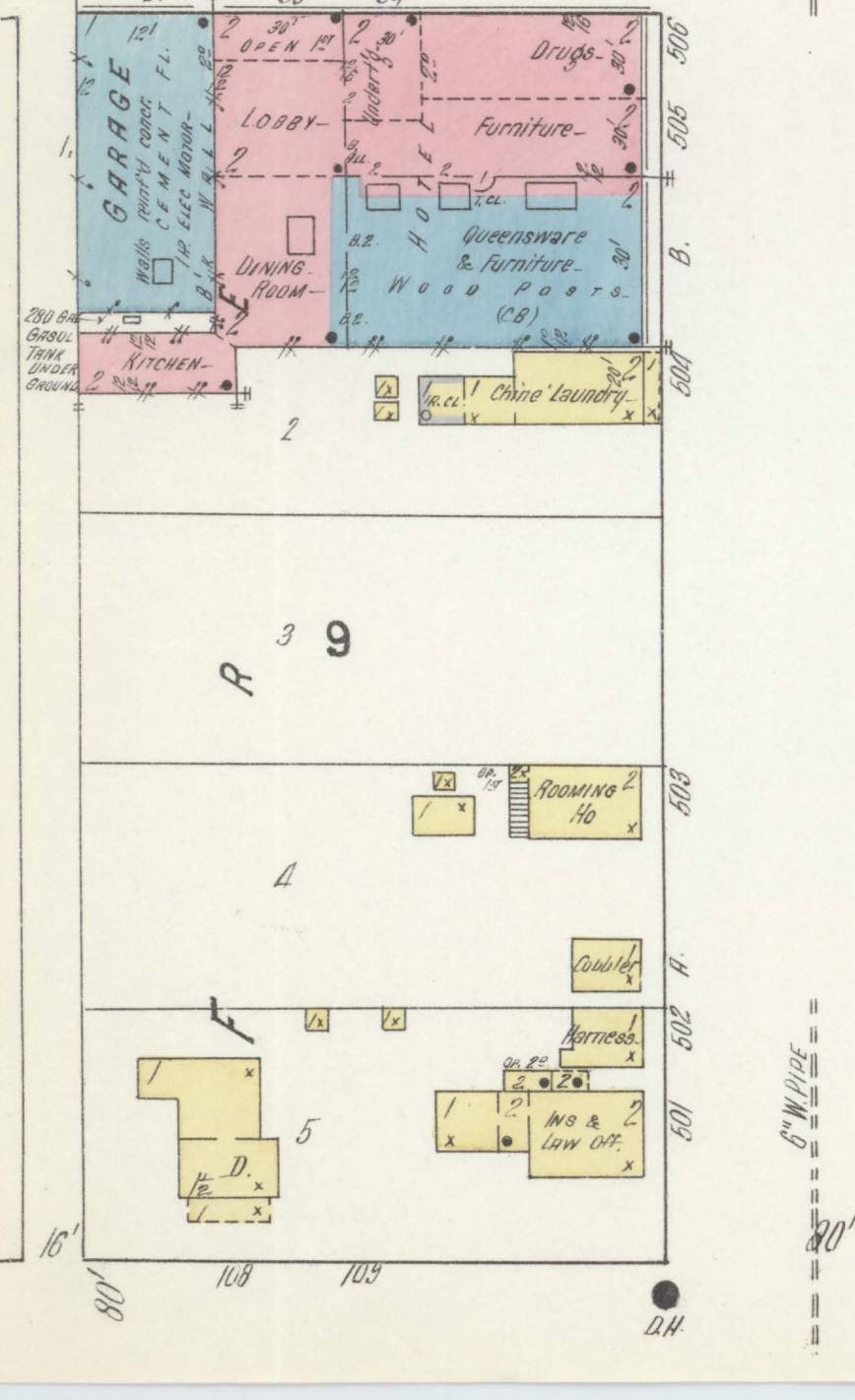
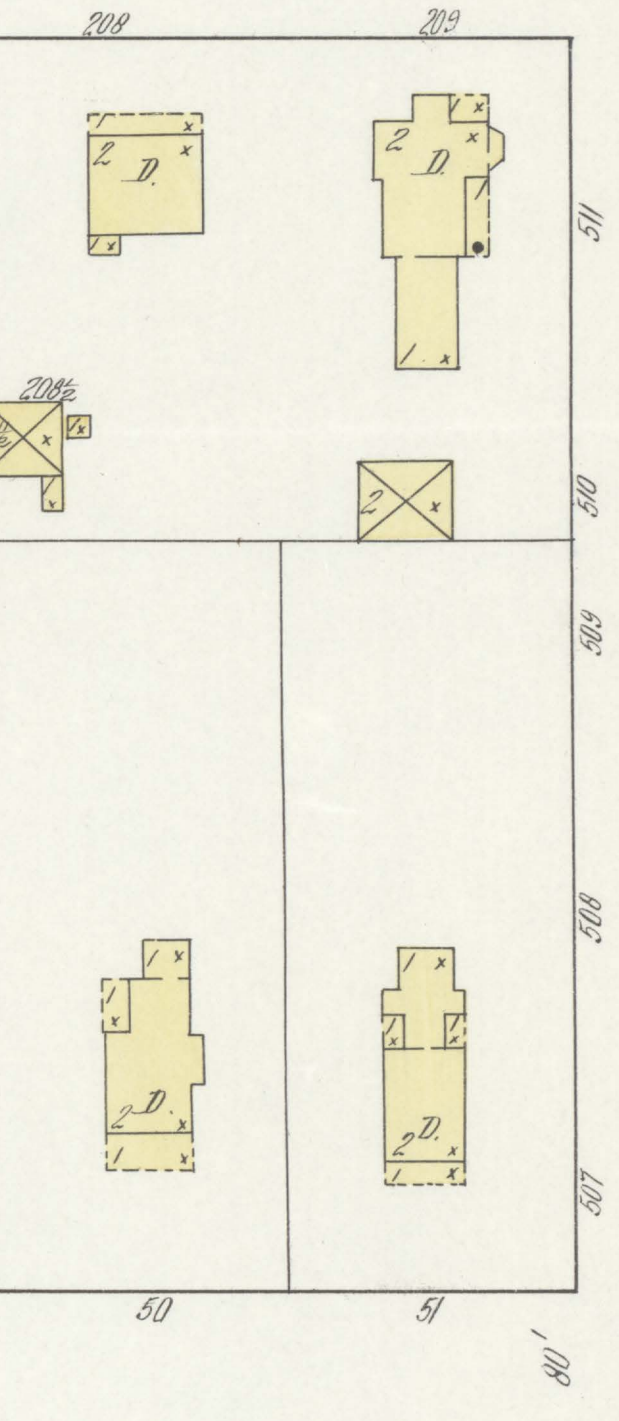
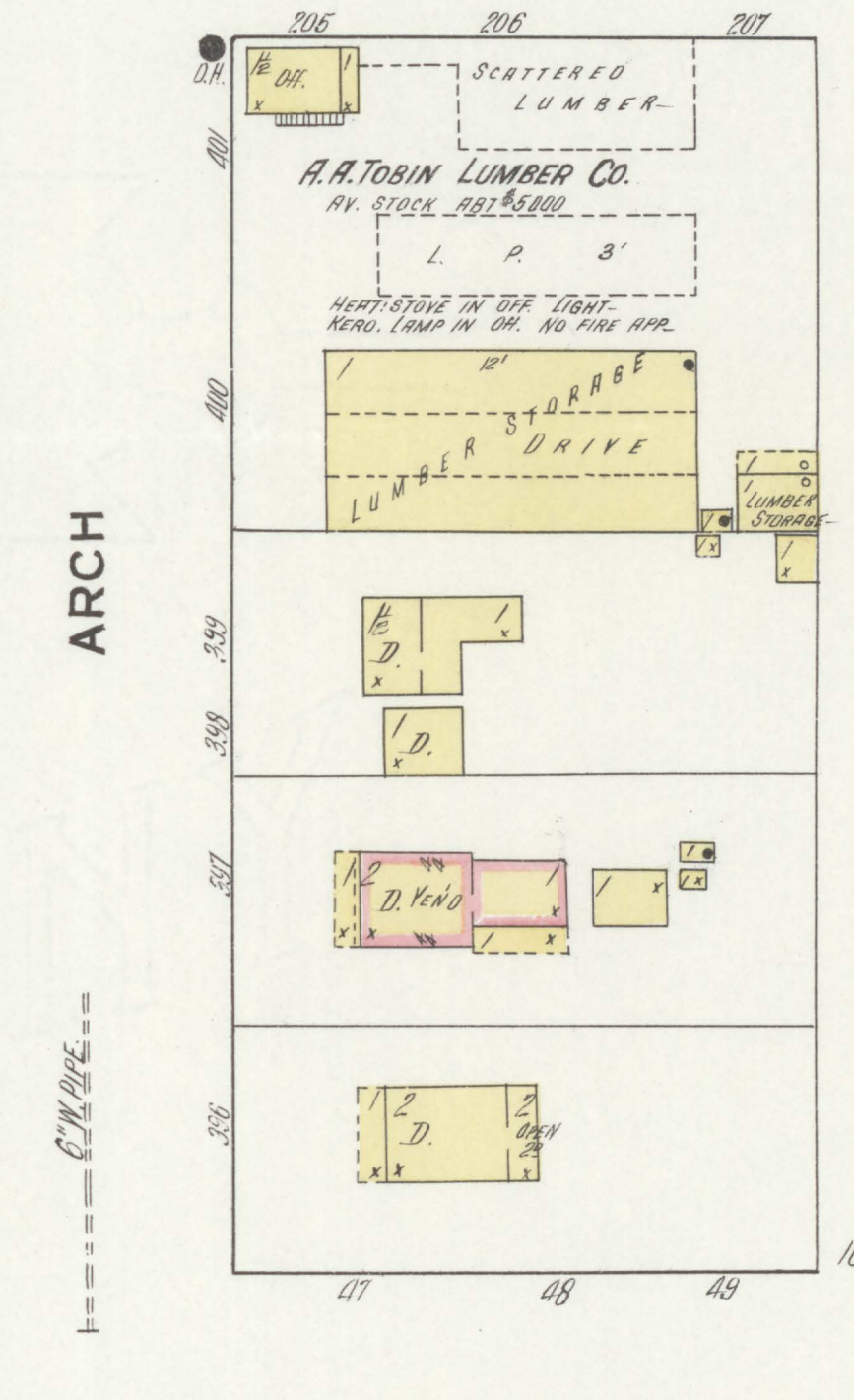
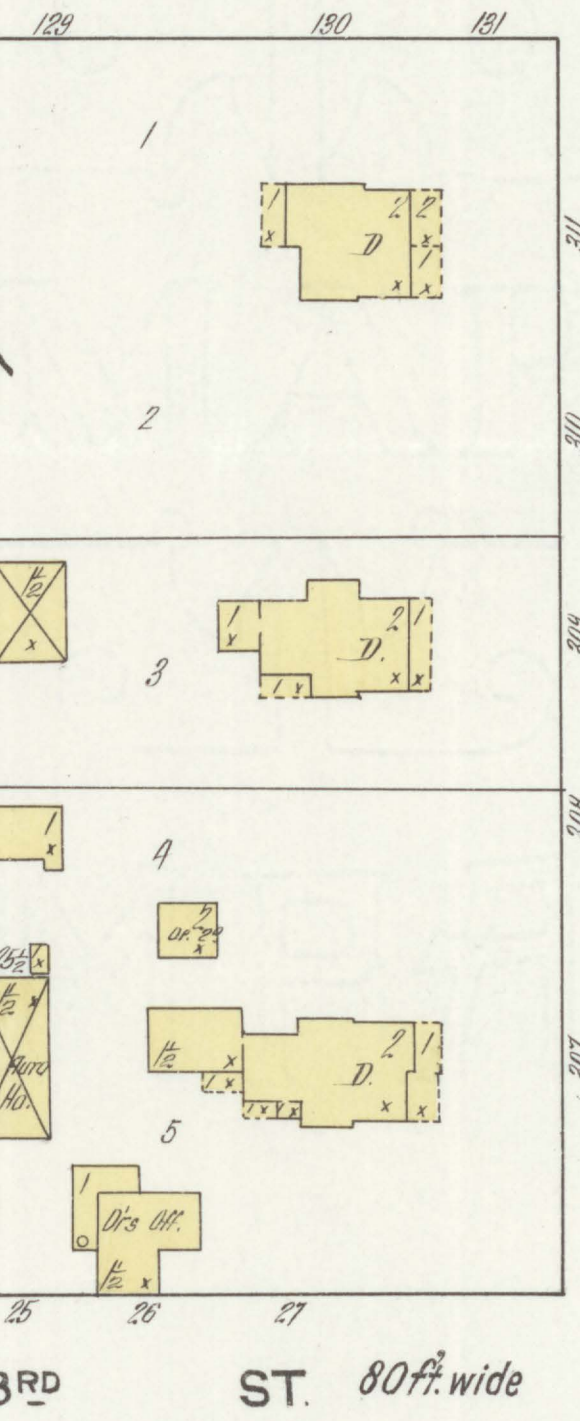
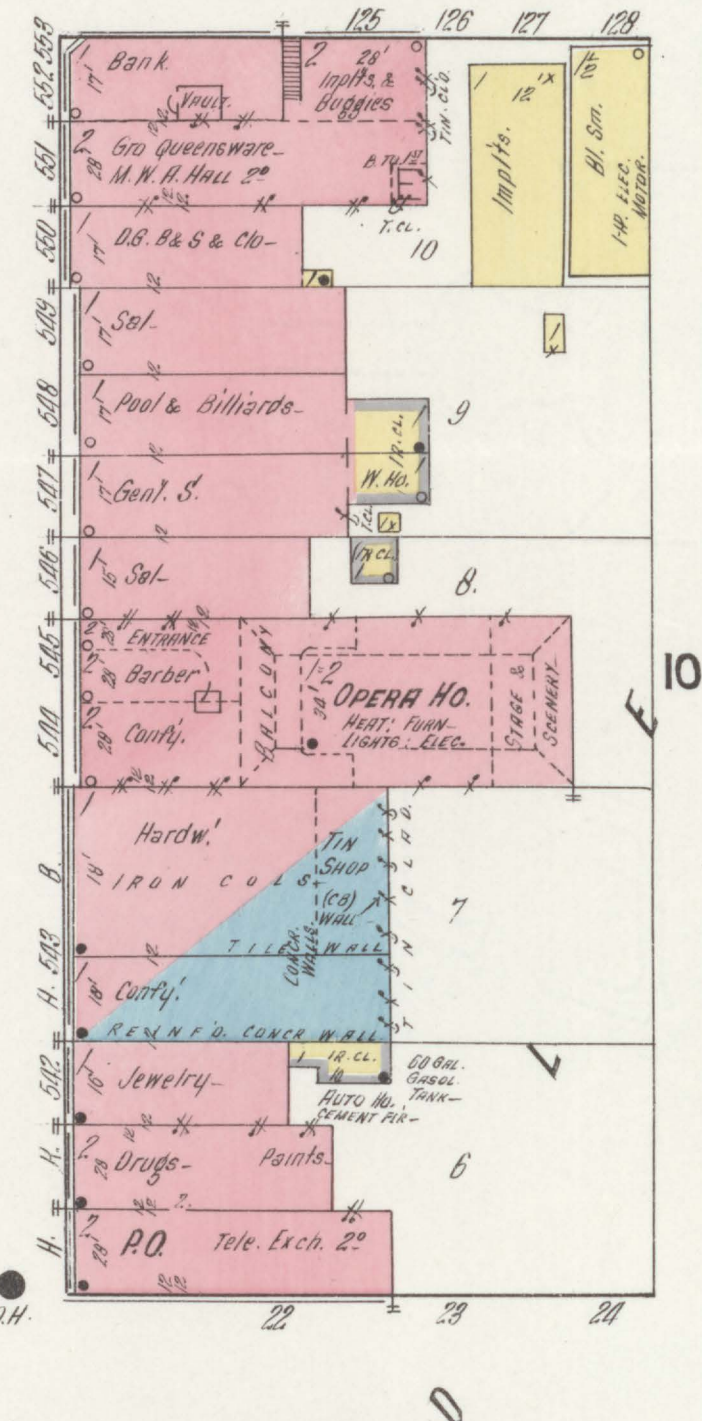
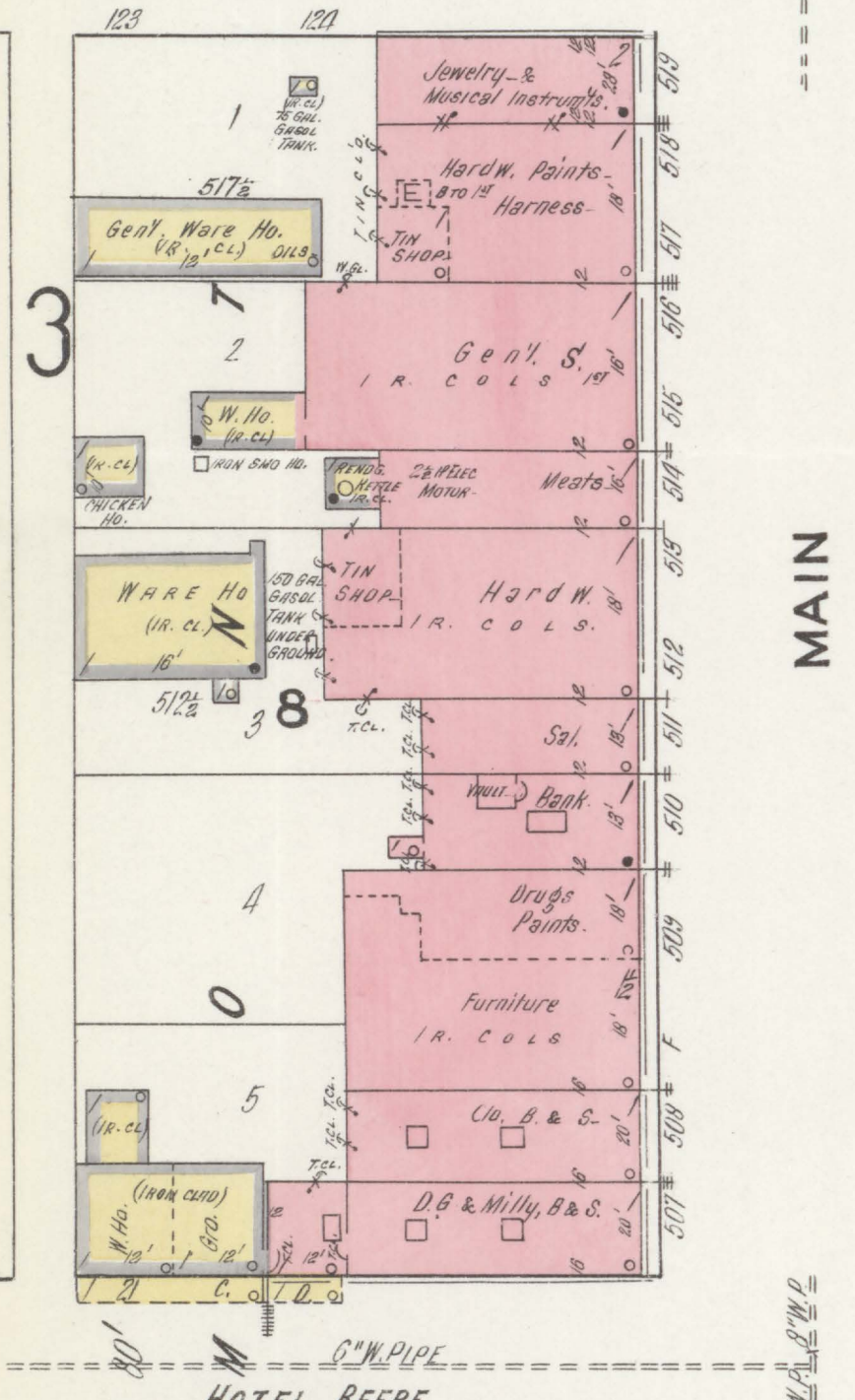
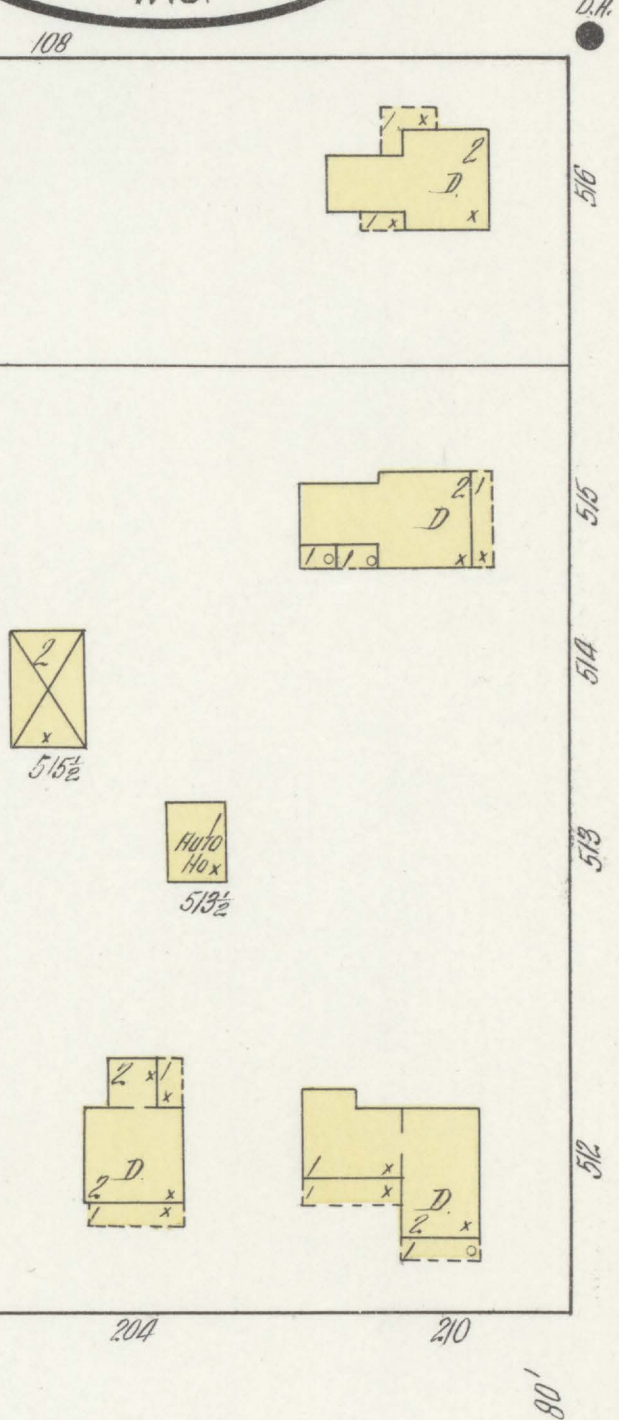
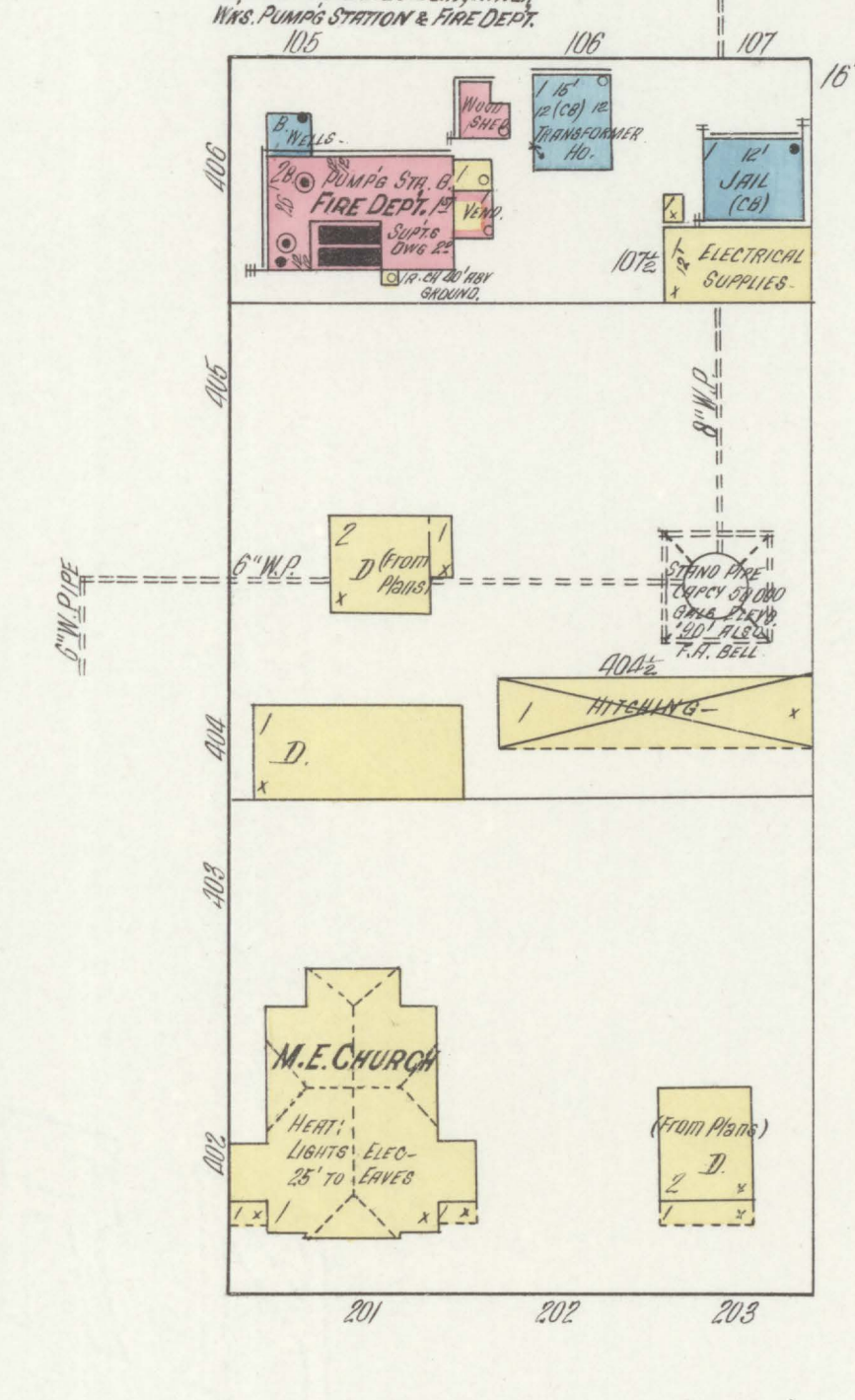
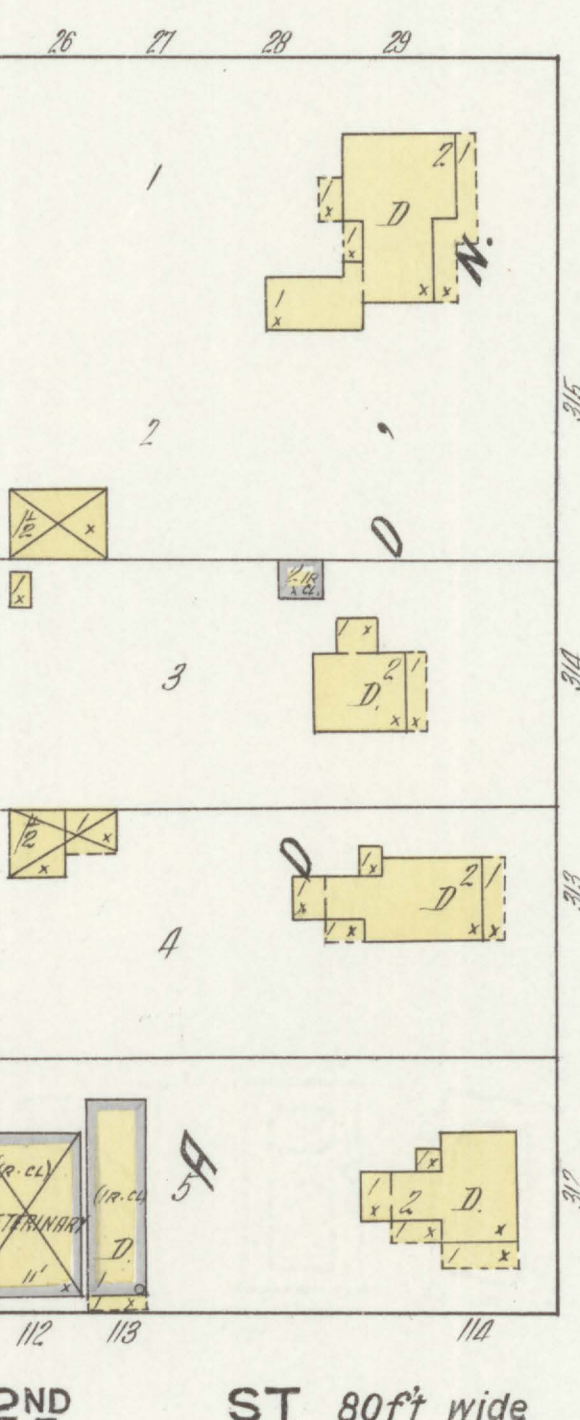
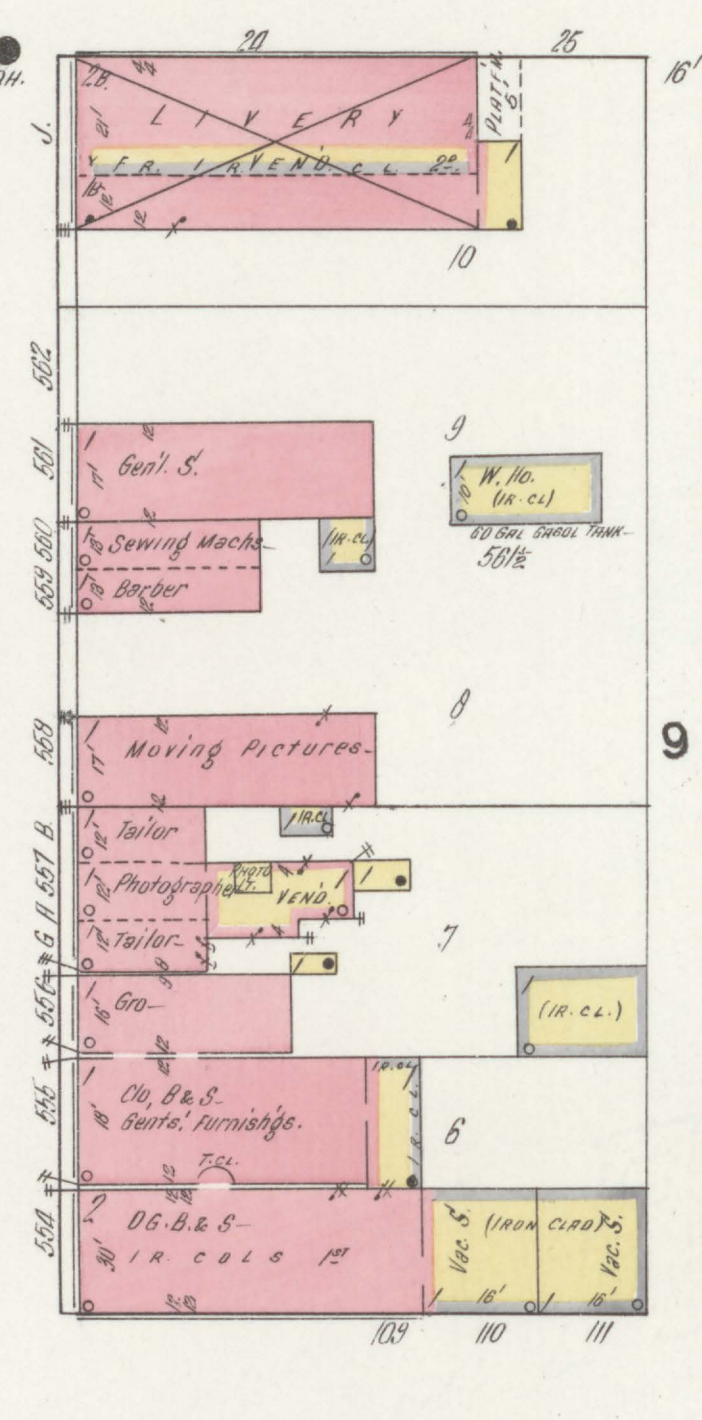
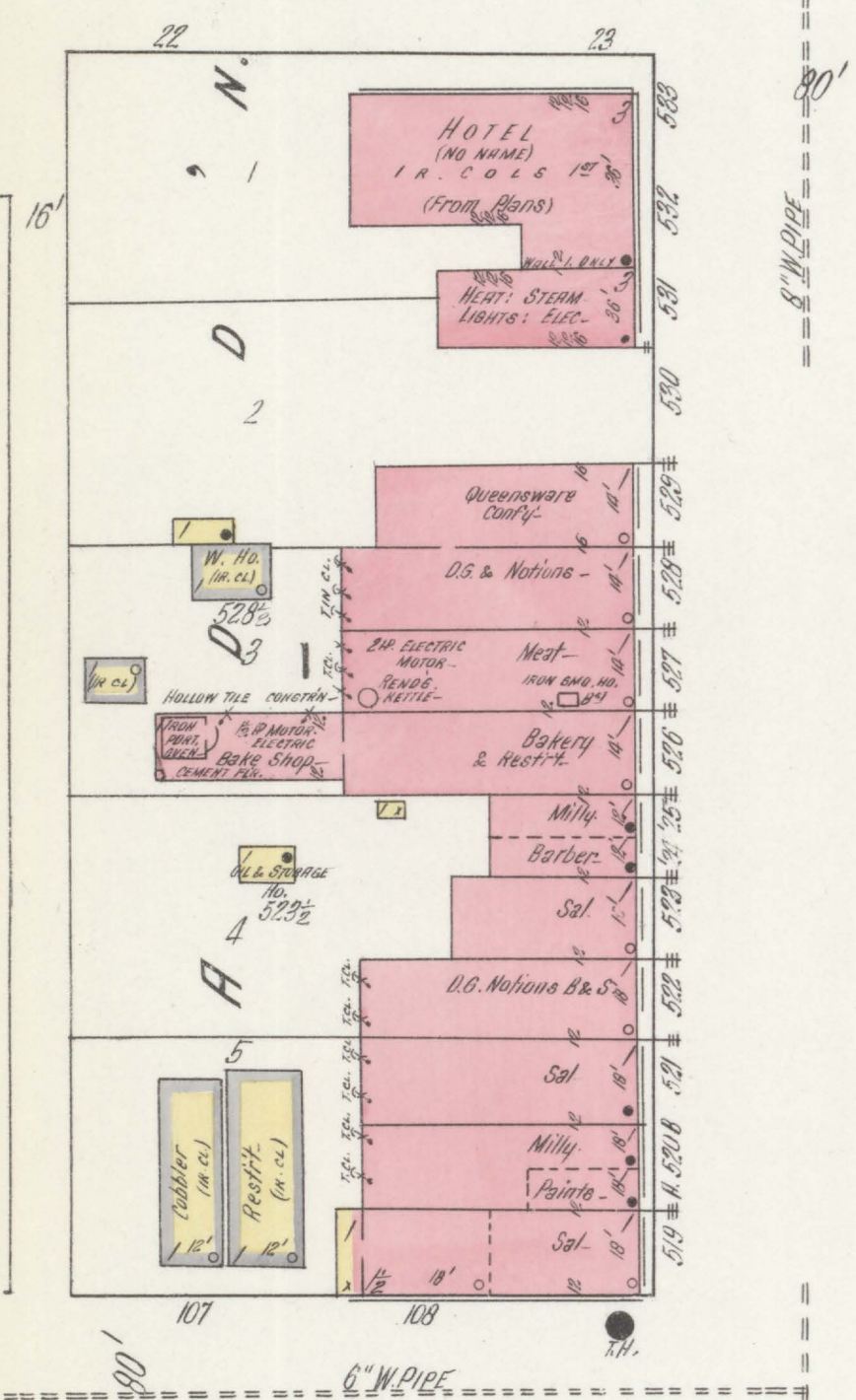
80

Willow River

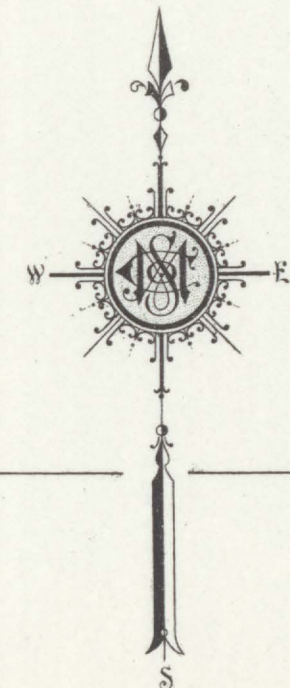


NEW RICHMOND ELEC. LIGHT & WATER Wks., PUMPING STATION & FIRE DEPT.

Superintendent lives on 2nd floor. Heat: Willis Davis Electric. Fuel: Coal.
 Pump and station: One duplex drive rotating horizontal, 6-inch 1/2-inch pump size 7 1/2
 cubic feet per minute driven by a 30 H.P. electric motor. Belt conn. 8" suction. 6" discharge into
 8" main to stand pipe. Use power obtained from New Richmond Roller Mills Pump Station.
 Located at Washington Ave. Also an auxiliary steam plant composed of two 30 H.P. boilers
 one of which is fit for service - and one Fairbanks-Morse duplex pump size 10 1/2 x 12
 cubic feet per minute - 8" suction - 6" discharge into 8" main. These pumps draw from 2 1/2 miles of
 main of city constantly which operates steam plant but none of city when operating. See plans
 for auto cut off stops motor when stand pipe is full - fire dept on 1st floor - 2 H.P. & 1 H.P. boiler
 tracks - one chimney, 1-1/2" x 10" & 1-1/2" x 10" chimneys. 2 barometer chimneys. One 1" nozzle 2 H.P.
 fire engine and 1 H.P. fire engine. One truck engine. 1-1/2" x 10" chimney. 1-1/2" x 10" chimney. 1-1/2" x 10"
 chimney. One 1" nozzle. One 1" nozzle. One 1" nozzle. One 1" nozzle. One 1" nozzle. One 1" nozzle.



Nov. 1912
NEW RICHMOND
 WIS.



Scale of Feet.
 50 40 30 20 10 0 50 100 150

6 HIGH

7

5

Nov 1912
NEW RICHMOND
WIS.

3RD ST.

MONTANA AV.

4TH ST.

3 ST.

DAKOTA AV.

ARCH

Located about 1/5 Mile N.W. of P.O.

1st BAPTIST CHURCH

EVANL ASSOCIATION CHURCH

PASSENGER STATION

CENTRAL HOUSE

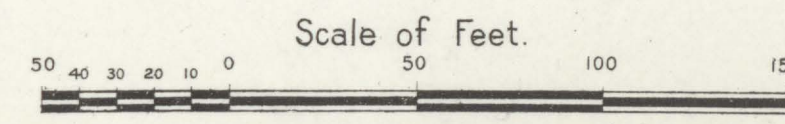
SOO HOTEL

NEW RICHMOND PRODUCE CO'S
ELEVATOR

FARMERS GRAIN CO'S
FEED MILL & ELEVATOR

NEW RICHMOND ROLLER MILLS CO.
FLOUR MILL & GRAIN ELEVATOR

Mill Pond

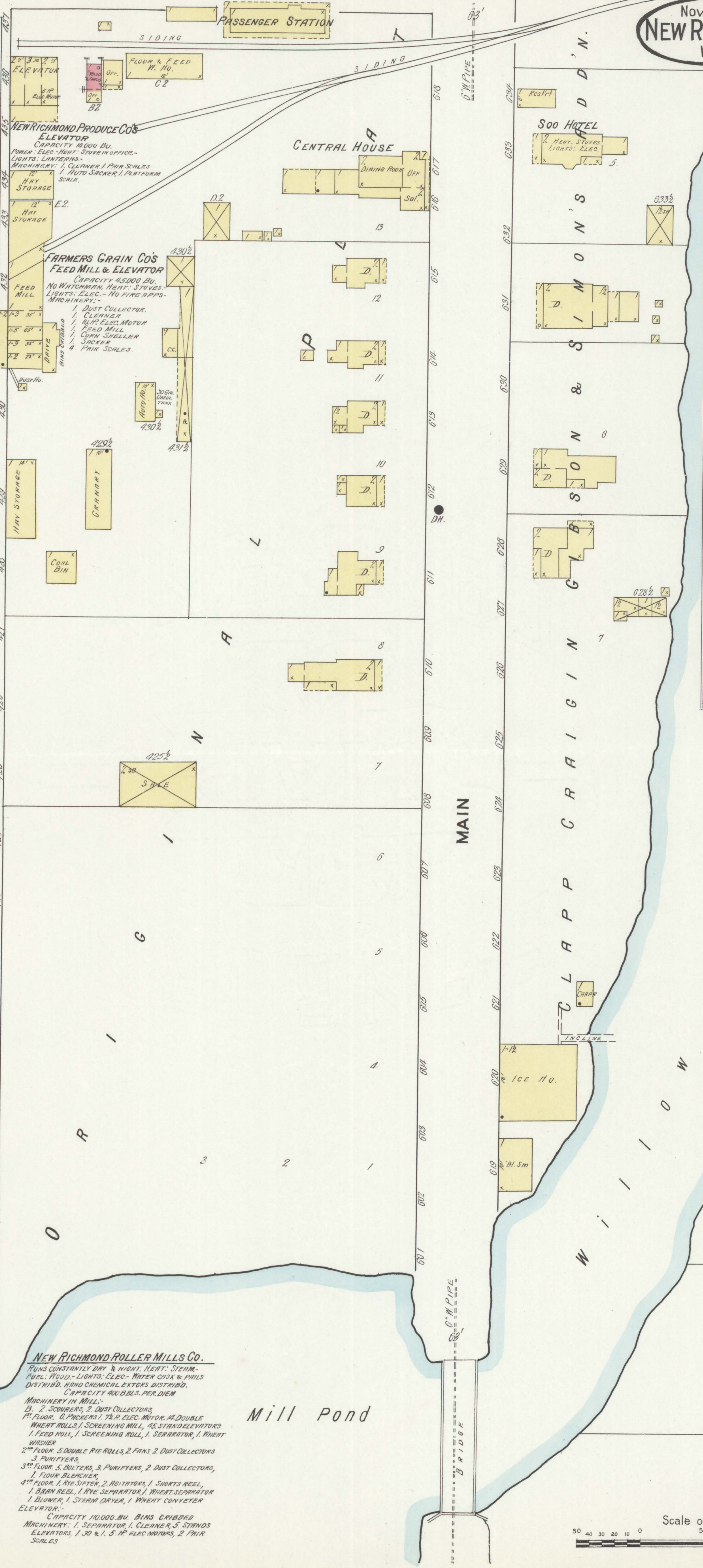
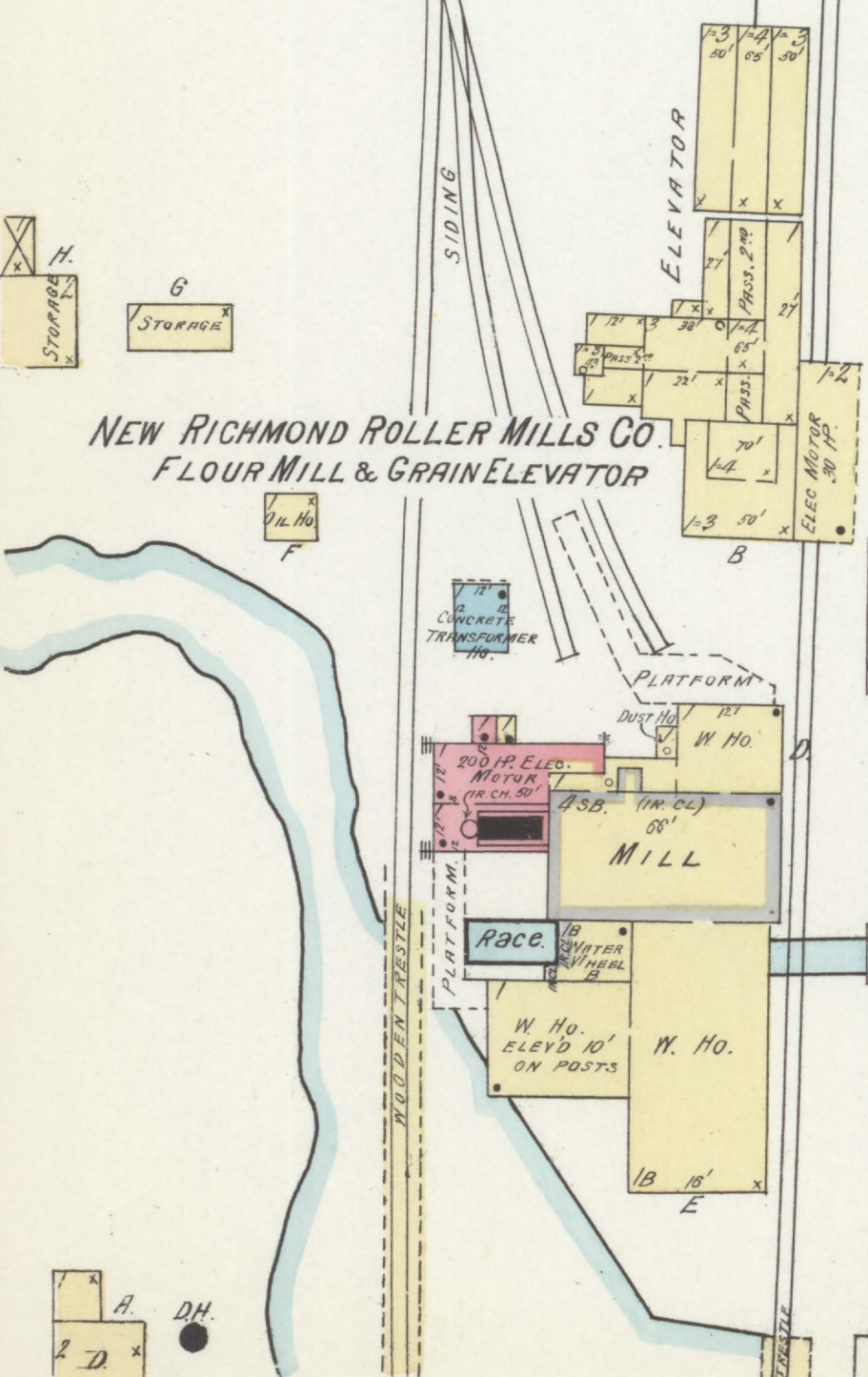
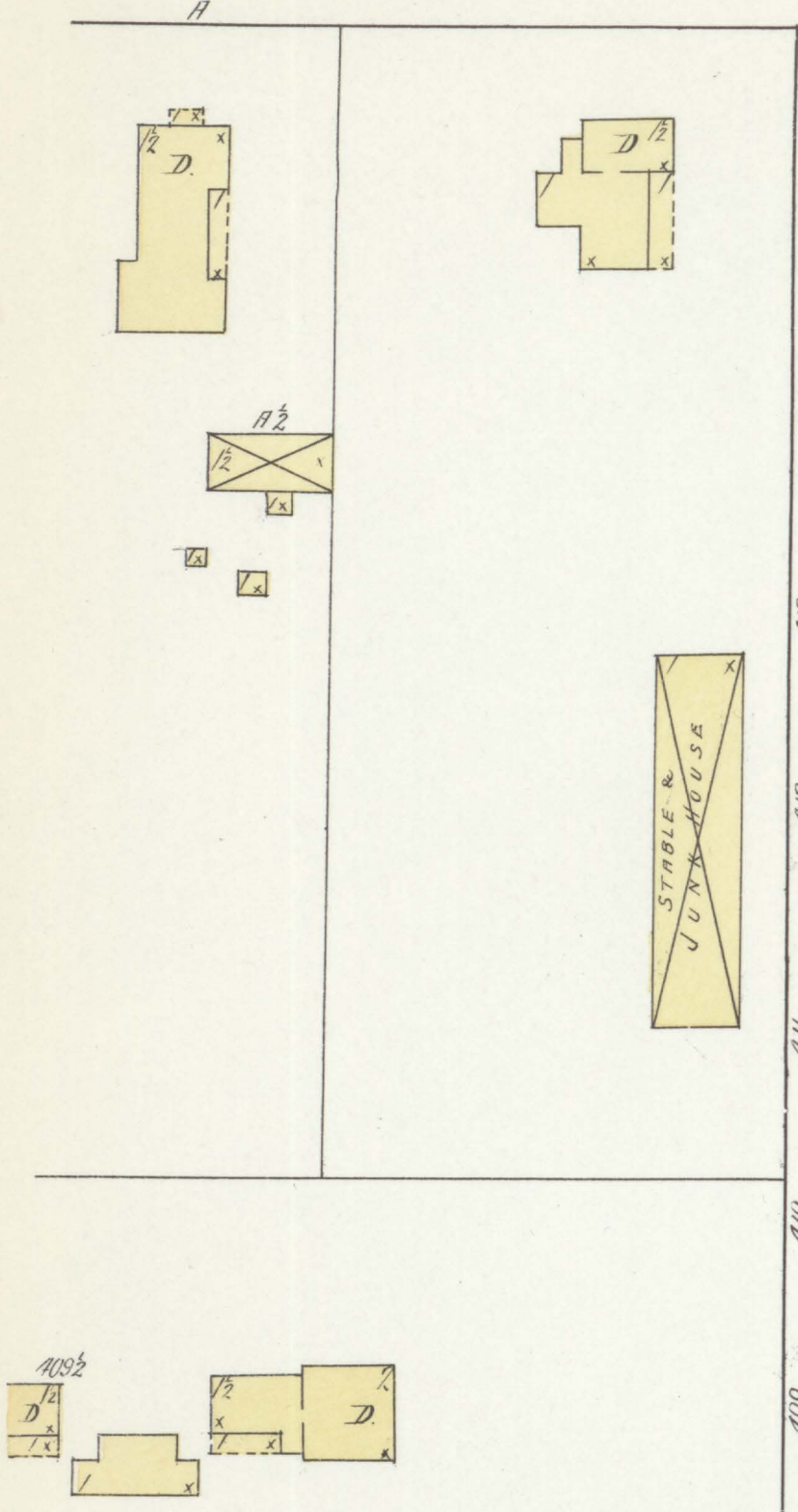


MINNESOTA AV.

MAIN

CLAPP CARRIAGE

WILLOW RIVER



Machinery in Mill:
1st Floor: 2 SCOURERS, 2 DUST COLLECTORS, 1 FEED ROLL, 1 SCREENING MILL, 1 SEPARATOR, 1 WHEAT WASHES
2nd Floor: 5 DOUBLE RIE ROLLS, 2 FANS, 2 DUST COLLECTORS, 3 PURIFIERS
3rd Floor: 5 BOLLERS, 3 PURIFIERS, 2 DUST COLLECTORS, 1 FOUR BLENDER
4th Floor: 1 RYE SIFTER, 2 ROTATORS, 1 SHORTS REEL, 1 BRAN REEL, 1 RYE SEPARATOR, 1 WHEAT SEPARATOR
1 BLOWER, 1 STEAM DRYER, 1 WHEAT CONVEYER ELEVATOR
CAPACITY 10,000 BU. BINS CRIBBED
Machinery: 1 SEPARATOR, 1 CLEANER, 3 STANDS ELEVATORS, 1 30 & 1 15 H.P. ELEVATORS, 2 PAIR SCALES

NEW RICHMOND PRODUCE CO'S
ELEVATOR
CAPACITY 1000 BU.
POWER: ELEC. HEAT: STEAM
LIGHTS: LAMPERS
MACHINERY: 1 CLEANER, 1 PAIR SCALES
1 AUTO SACKER, 1 PLATFURN
SCALE

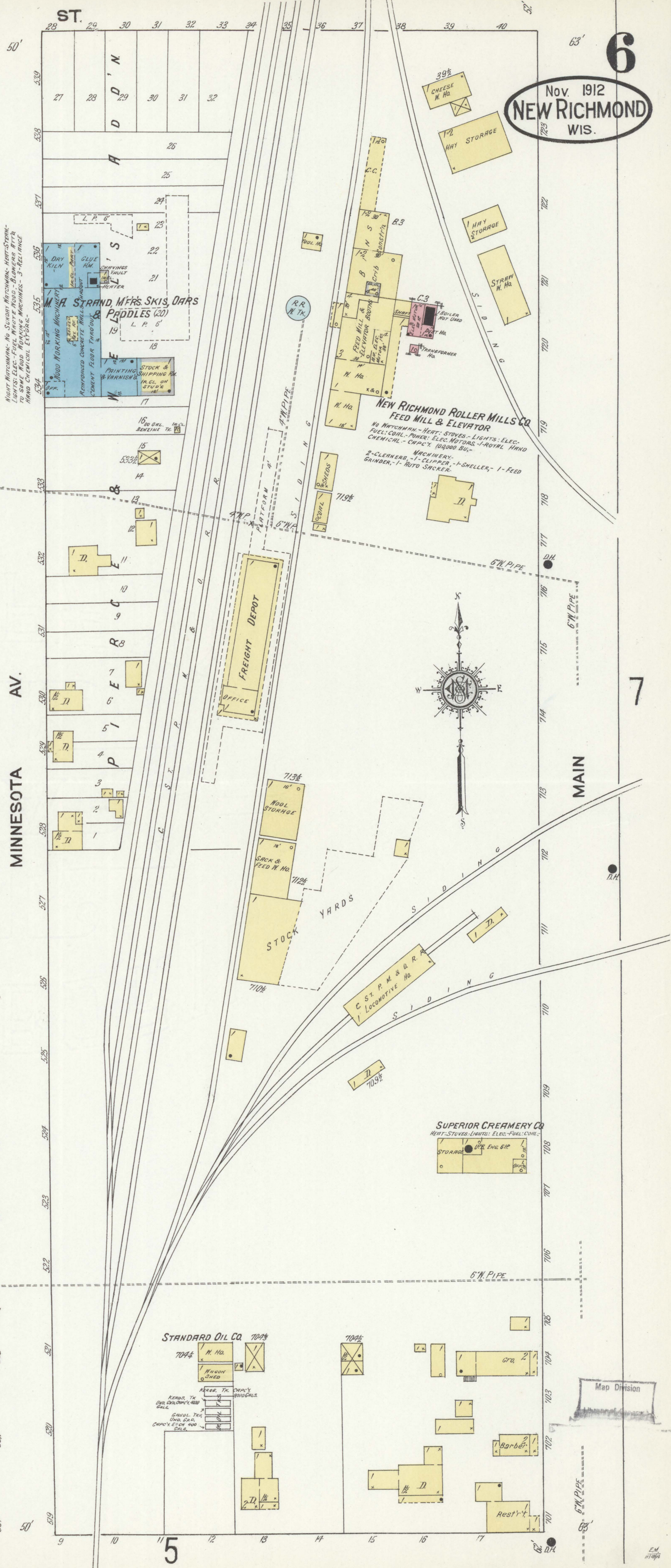
FARMERS GRAIN CO'S
FEED MILL & ELEVATOR
CAPACITY 45000 BU.
NO WATERTIGHT HEAT: STEAM
LIGHTS: ELEC. - NO FIRE APPS.
MACHINERY:
DUST COLLECTOR,
CLEANER,
M.F. ELEC. MOTOR,
FEED MILL,
COAR. CHILLER,
SACKER,
PAIR SCALES

NEW RICHMOND ROLLER MILLS CO.
FLOUR MILL & GRAIN ELEVATOR
Runs constantly day & night, HEAT: STEAM-
FUEL: WOOD - LIGHTS: ELEC. WATER CHECK & PHOS
DISTRIBD. HAND CHEMICAL EXTS. DISTRIBD.
CAPACITY 90000 BUS. PER DIEM
Machinery in Mill:
1st Floor: 2 SCOURERS, 2 DUST COLLECTORS,
1 FEED ROLL, 1 SCREENING MILL, 1 SEPARATOR, 1 WHEAT
WASHES
2nd Floor: 5 DOUBLE RIE ROLLS, 2 FANS, 2 DUST COLLECTORS,
3 PURIFIERS
3rd Floor: 5 BOLLERS, 3 PURIFIERS, 2 DUST COLLECTORS,
1 FOUR BLENDER
4th Floor: 1 RYE SIFTER, 2 ROTATORS, 1 SHORTS REEL,
1 BRAN REEL, 1 RYE SEPARATOR, 1 WHEAT SEPARATOR
1 BLOWER, 1 STEAM DRYER, 1 WHEAT CONVEYER
ELEVATOR
CAPACITY 10,000 BU. BINS CRIBBED
Machinery: 1 SEPARATOR, 1 CLEANER, 3 STANDS
ELEVATORS, 1 30 & 1 15 H.P. ELEVATORS, 2 PAIR
SCALES

NEW RICHMOND PRODUCE CO'S
ELEVATOR
CAPACITY 1000 BU.
POWER: ELEC. HEAT: STEAM
LIGHTS: LAMPERS
MACHINERY: 1 CLEANER, 1 PAIR SCALES
1 AUTO SACKER, 1 PLATFURN
SCALE

FARMERS GRAIN CO'S
FEED MILL & ELEVATOR
CAPACITY 45000 BU.
NO WATERTIGHT HEAT: STEAM
LIGHTS: ELEC. - NO FIRE APPS.
MACHINERY:
DUST COLLECTOR,
CLEANER,
M.F. ELEC. MOTOR,
FEED MILL,
COAR. CHILLER,
SACKER,
PAIR SCALES

NEW RICHMOND ROLLER MILLS CO.
FLOUR MILL & GRAIN ELEVATOR
Runs constantly day & night, HEAT: STEAM-
FUEL: WOOD - LIGHTS: ELEC. WATER CHECK & PHOS
DISTRIBD. HAND CHEMICAL EXTS. DISTRIBD.
CAPACITY 90000 BUS. PER DIEM
Machinery in Mill:
1st Floor: 2 SCOURERS, 2 DUST COLLECTORS,
1 FEED ROLL, 1 SCREENING MILL, 1 SEPARATOR, 1 WHEAT
WASHES
2nd Floor: 5 DOUBLE RIE ROLLS, 2 FANS, 2 DUST COLLECTORS,
3 PURIFIERS
3rd Floor: 5 BOLLERS, 3 PURIFIERS, 2 DUST COLLECTORS,
1 FOUR BLENDER
4th Floor: 1 RYE SIFTER, 2 ROTATORS, 1 SHORTS REEL,
1 BRAN REEL, 1 RYE SEPARATOR, 1 WHEAT SEPARATOR
1 BLOWER, 1 STEAM DRYER, 1 WHEAT CONVEYER
ELEVATOR
CAPACITY 10,000 BU. BINS CRIBBED
Machinery: 1 SEPARATOR, 1 CLEANER, 3 STANDS
ELEVATORS, 1 30 & 1 15 H.P. ELEVATORS, 2 PAIR
SCALES



Map Division

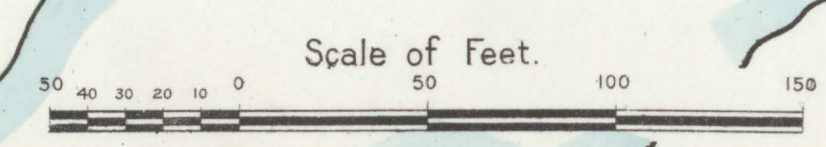
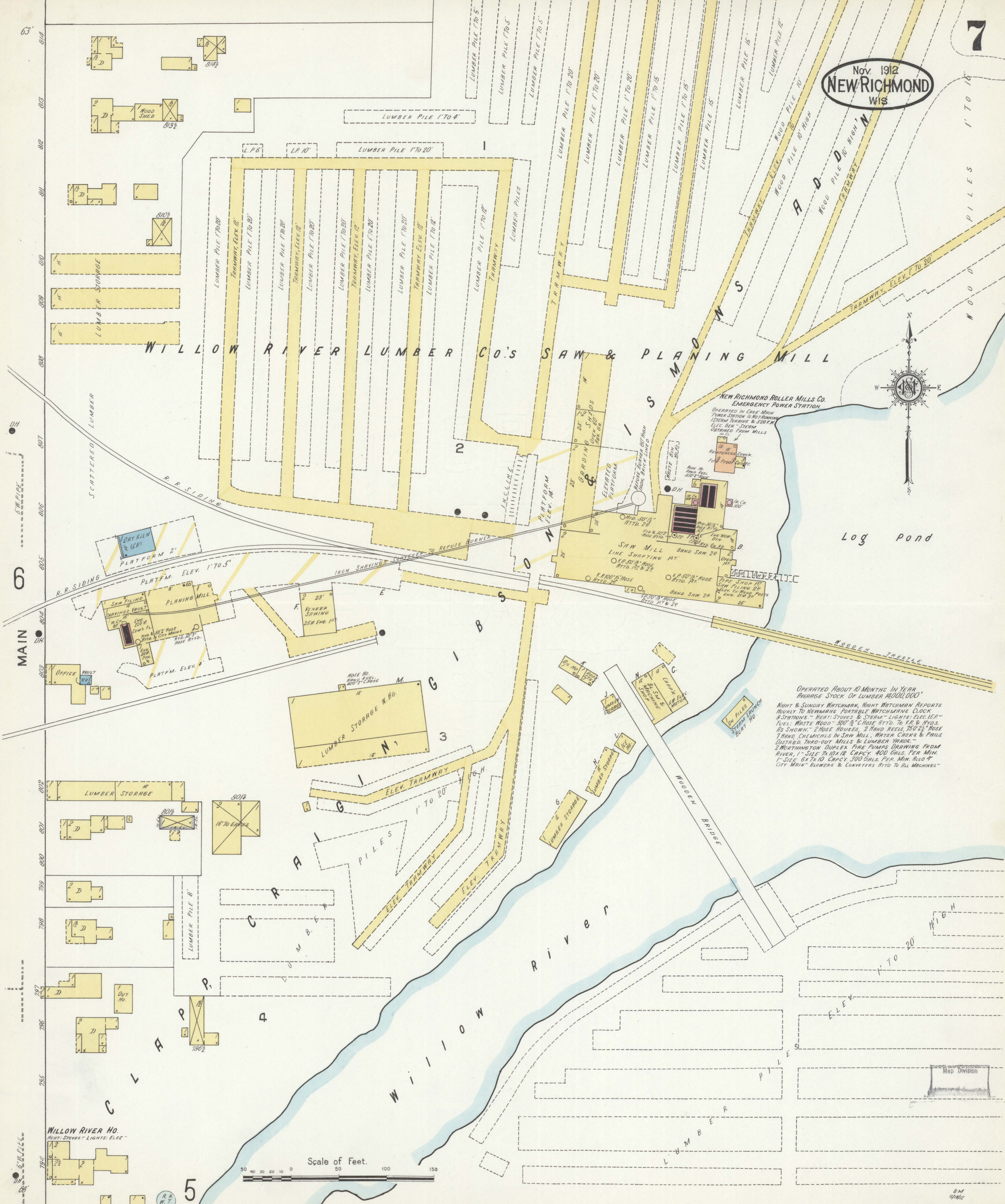
Nov. 1912
NEW RICHMOND
WIS.

WILLOW RIVER LUMBER CO'S SAW & PLANING MILL



OPERATED ABOUT 10 MONTHS IN YEAR
AVERAGE STOCK OF LUMBER 4000,000'

NIGHT & SUNDAY WATCHMAN, NIGHT WATCHMAN REPORTS
HOURLY TO HERMAN'S PORTABLE WATCHMAN'S CLOCK
& STATIONS - HEAT - STOVES & STEAM - LIGHTS; ELEC. I.C.P.
FUEL: WASTE WOOD - 500' & CHOSE ATTD. TO Y.P. & H.Y.S.
AS SHOWN - 2 HOSE HOUSES, 2 HAND REELS, 150' 2 1/2" HOSE
1 HAND CHEMICALS IN SAW MILL, WATER CASKS & PAILS
DISTRIB. THRO' OUT MILLS & LUMBER YARDS -
2 WORTHINGTON DUPLEX FIRE PUMPS DRAWING FROM
RIVER, 1" SIDE 2 1/2" I.D. CAPCY. 400 GALS. PER MIN.
- SIDE 6 1/2" I.D. CAPCY. 300 GALS. PER MIN. ALSO 4"
CITY MAIN - BLOWERS & CONVEYERS ATTD. TO ALL MACHINES -



WILLOW RIVER HO.
HEAT - STOVES - LIGHTS - ELEC.

Map Division