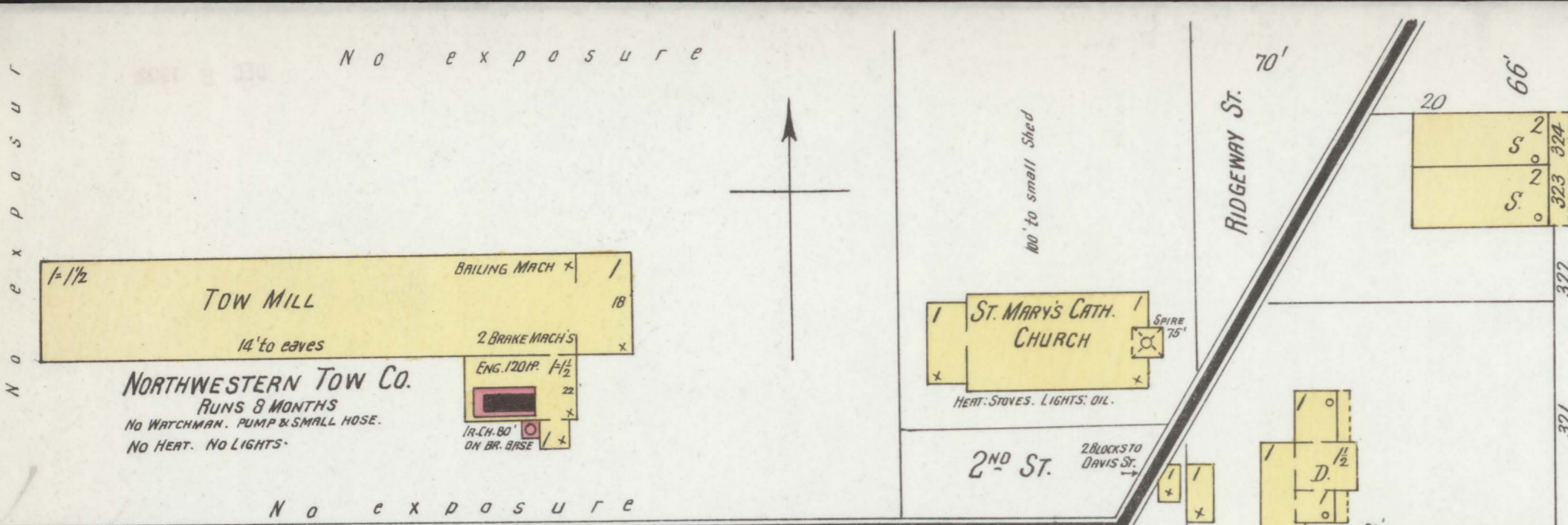
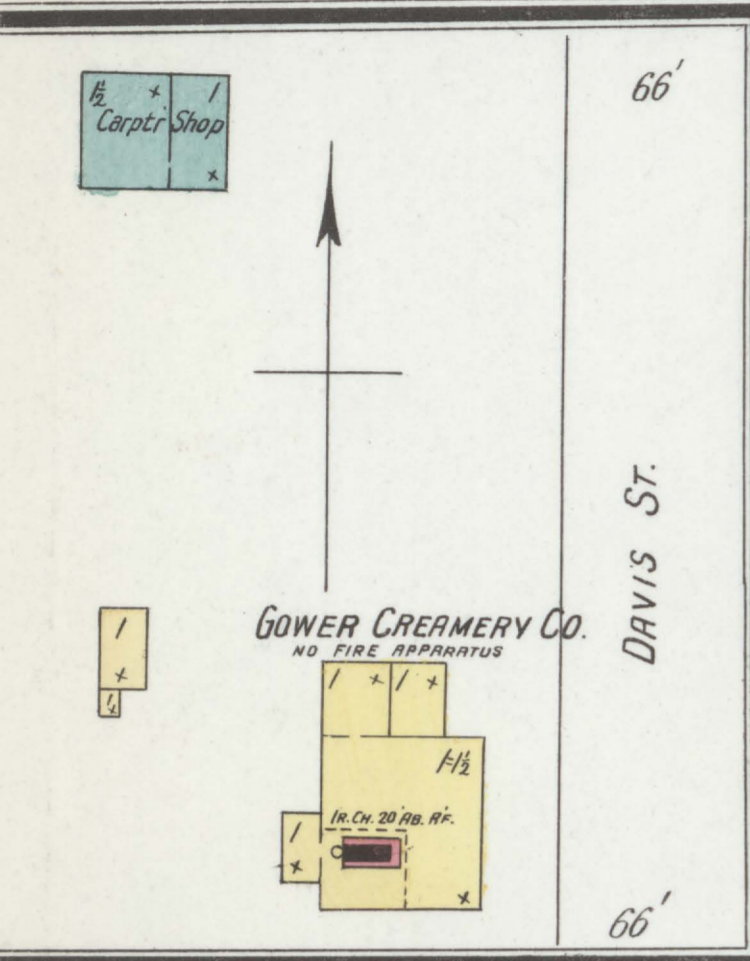


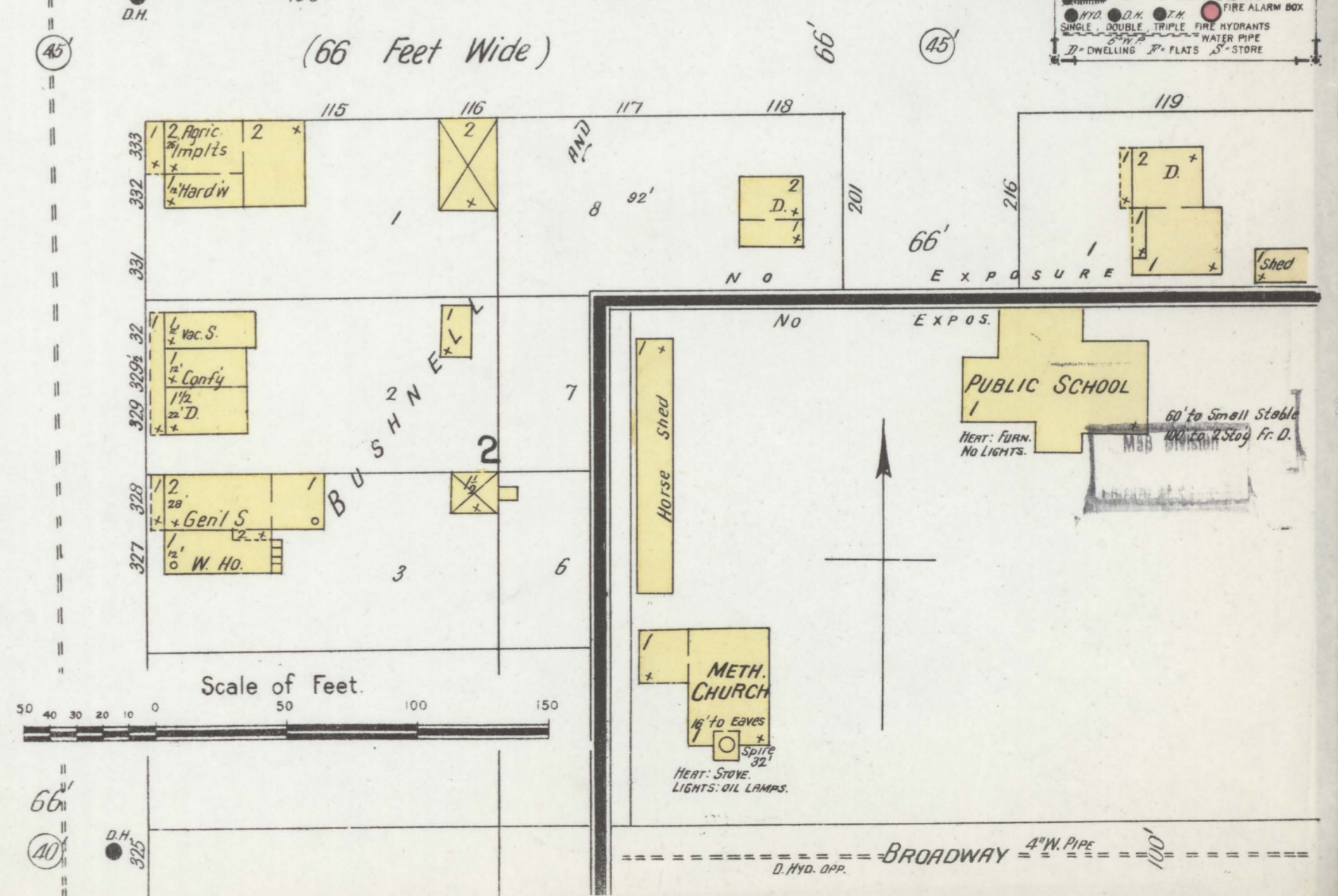
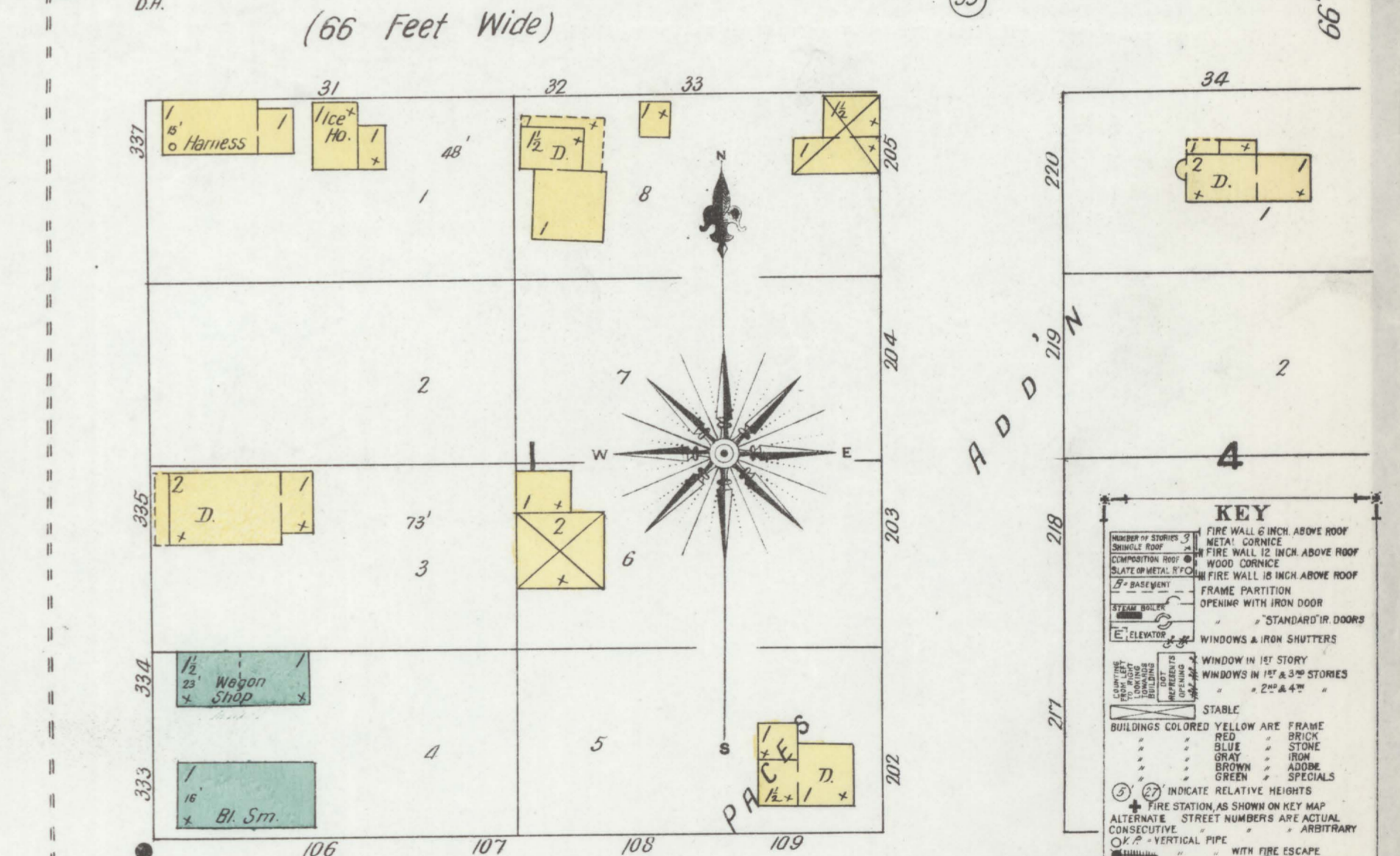
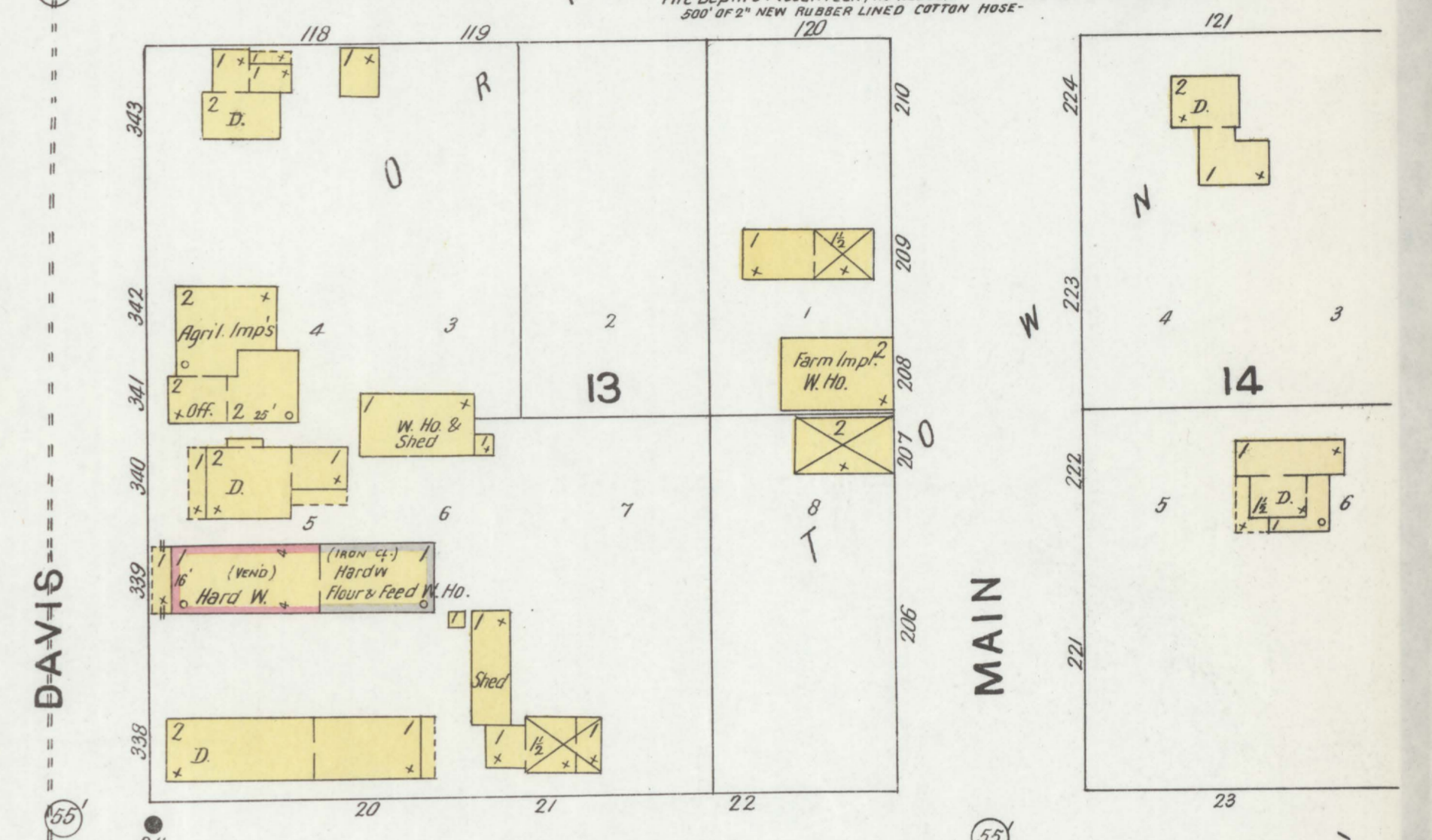
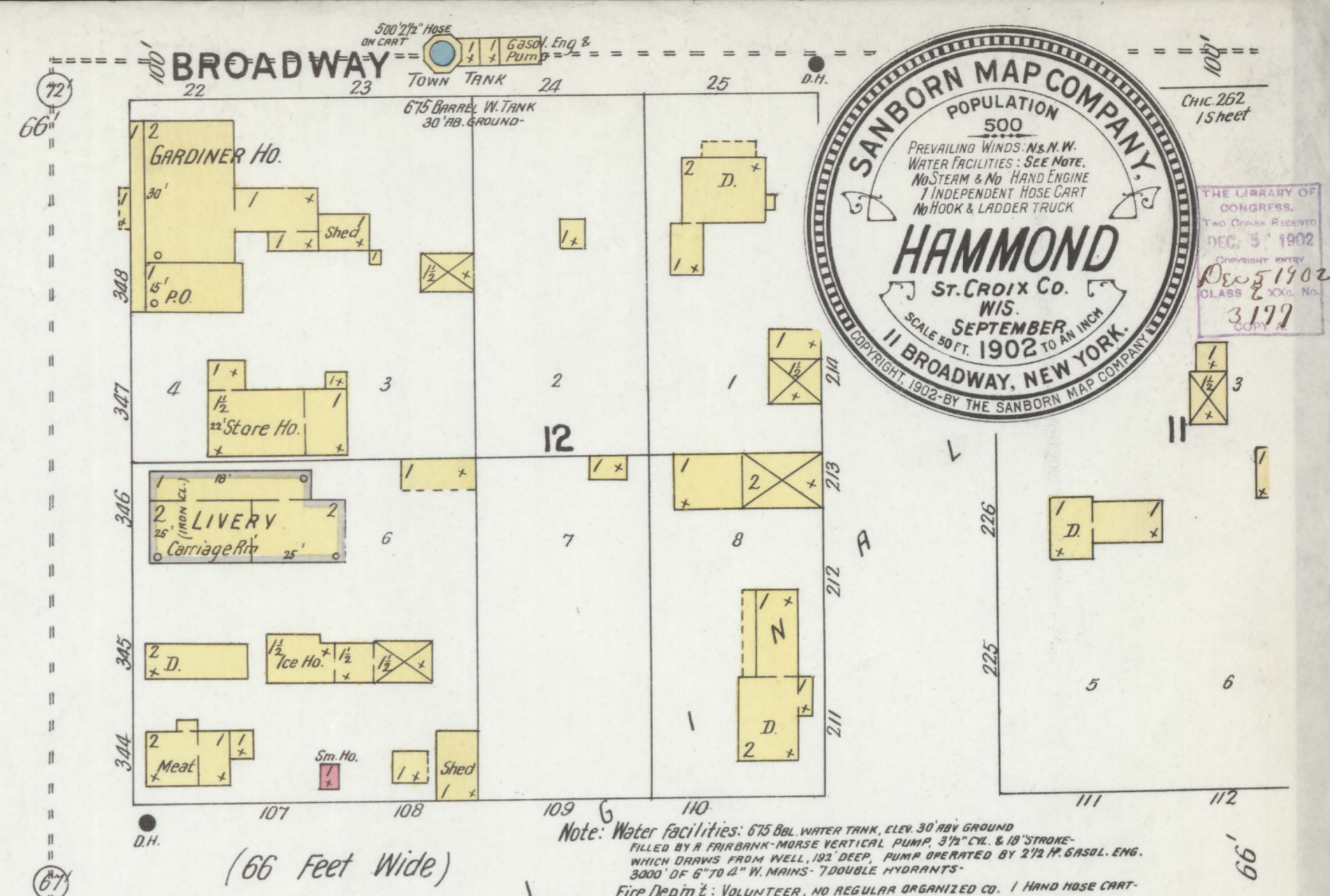
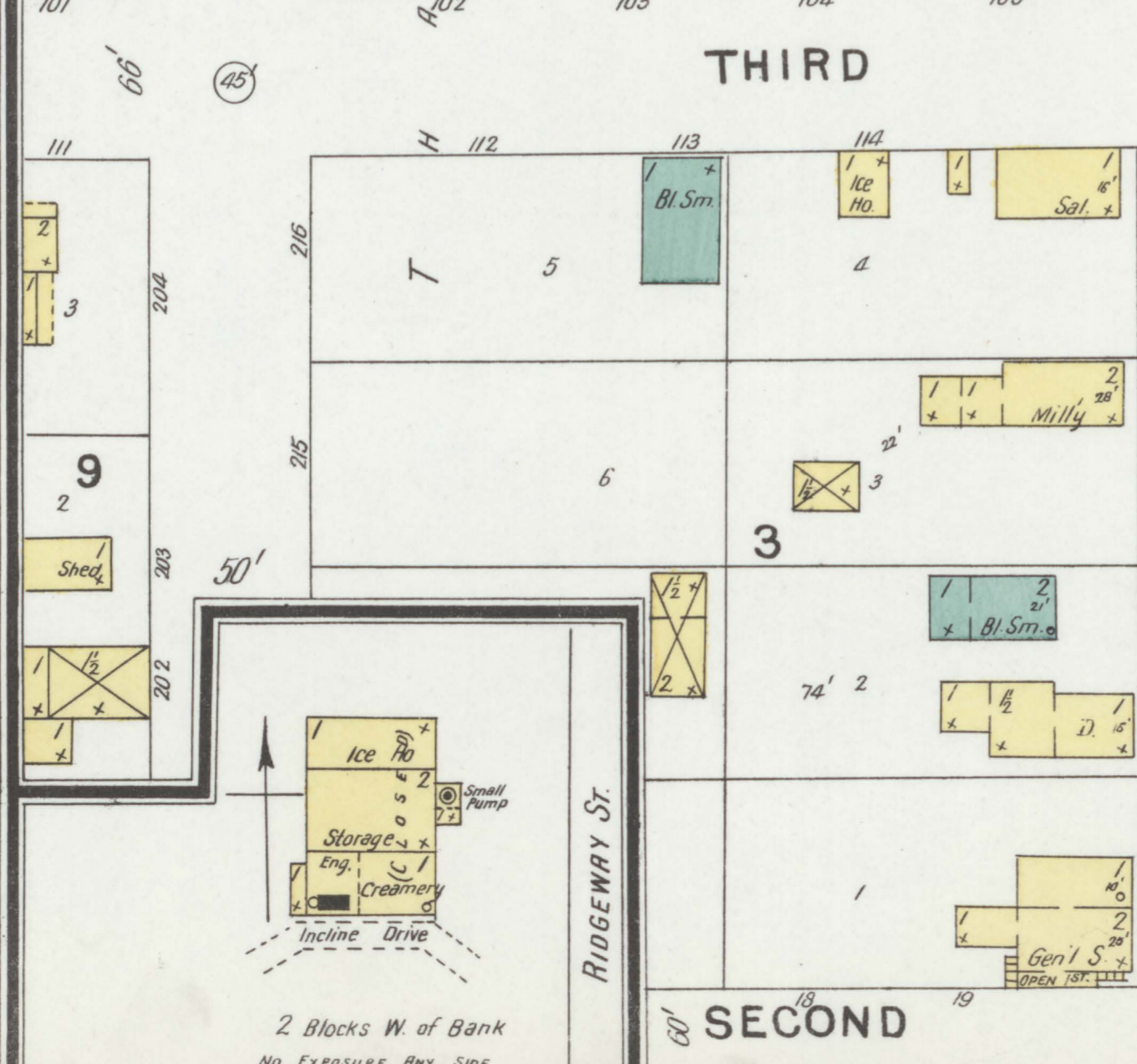
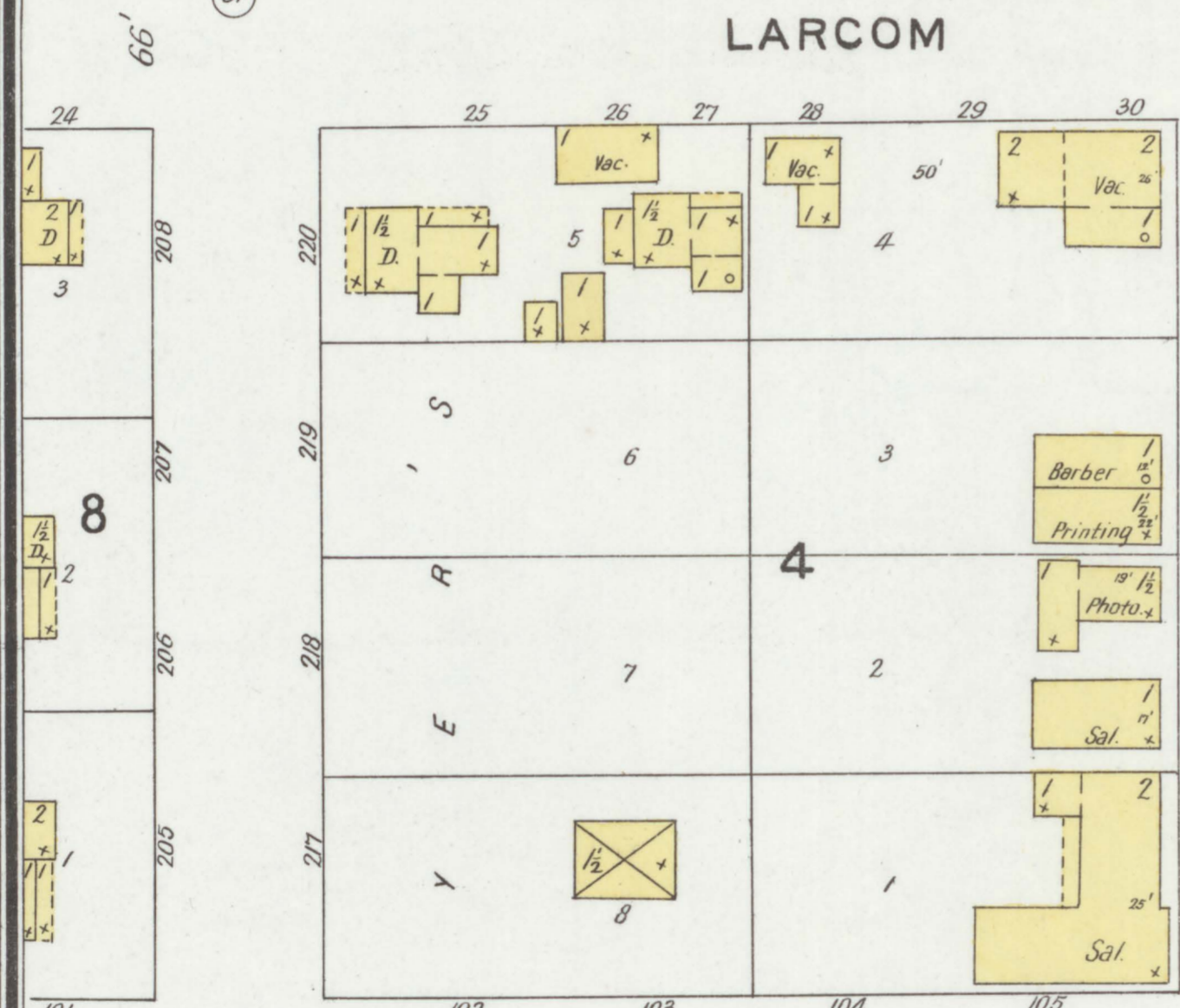
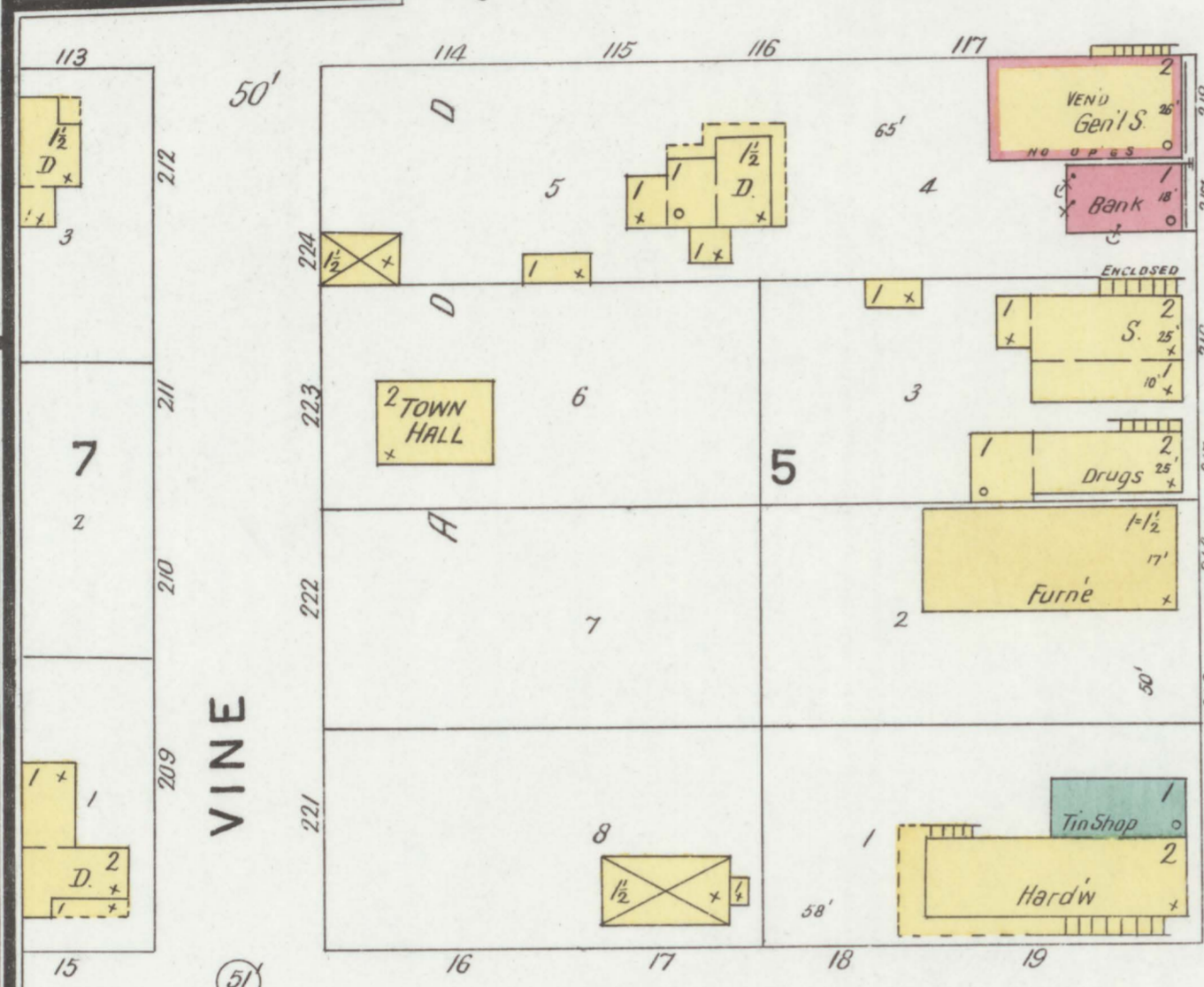
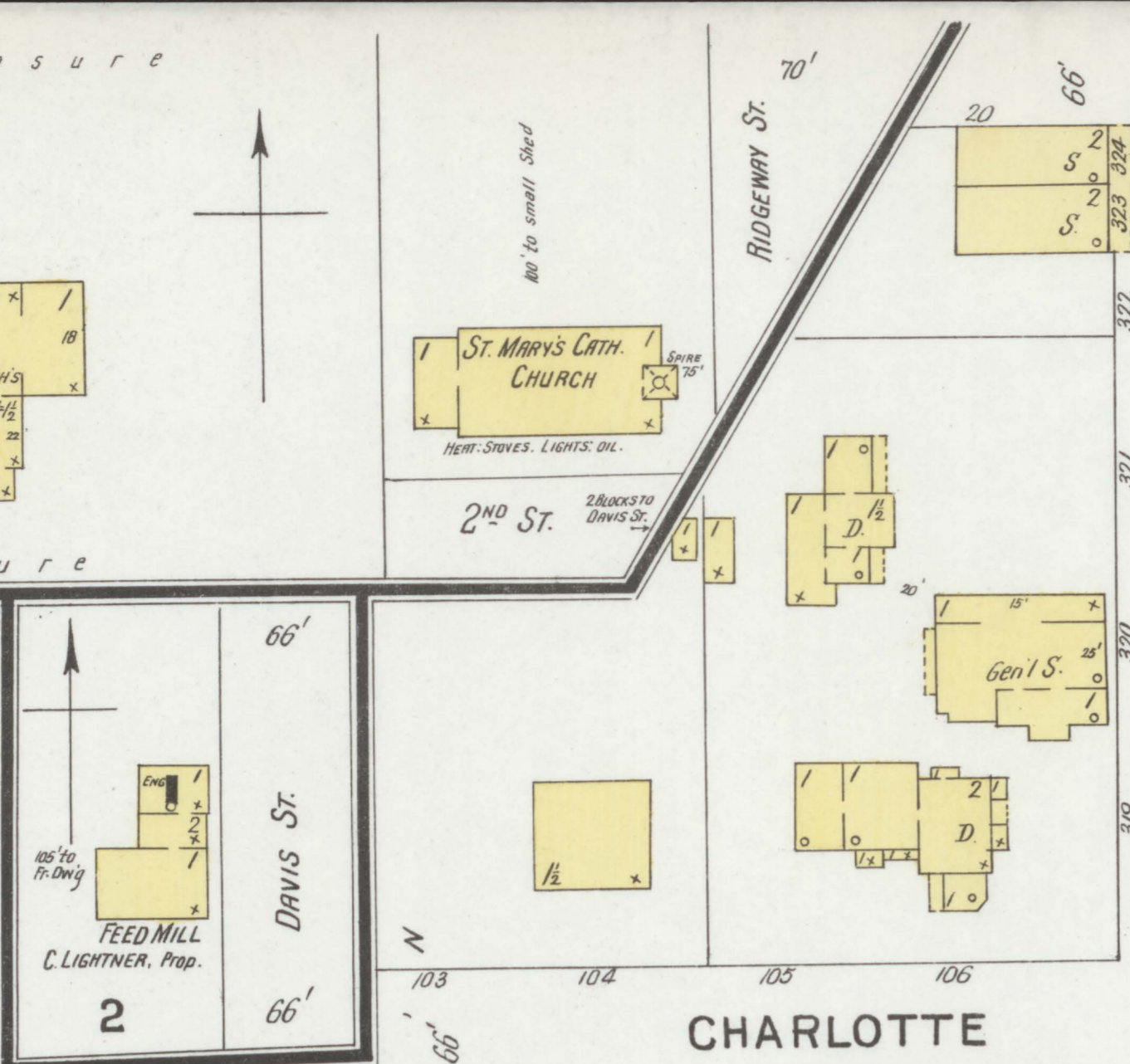
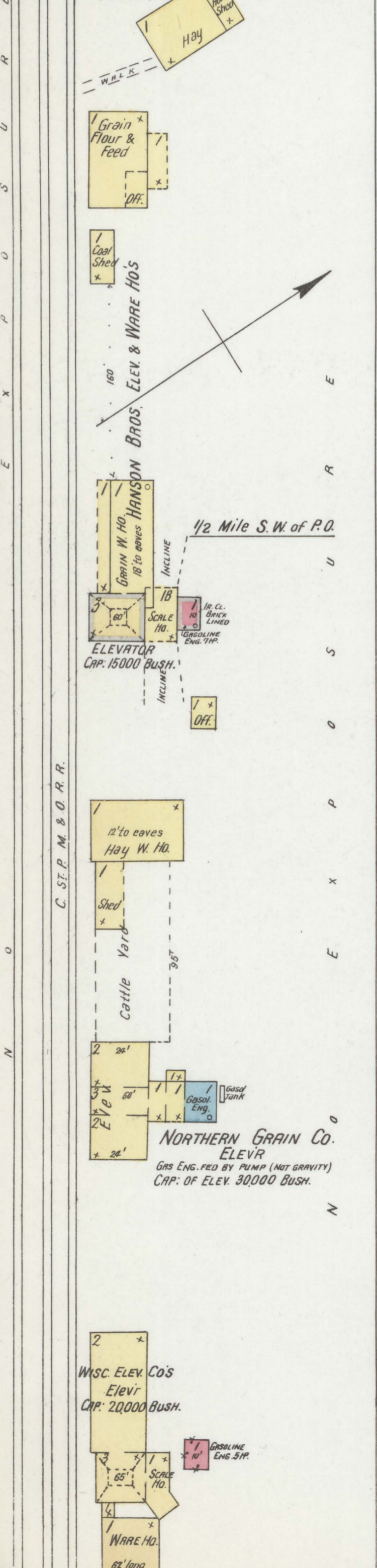
No exposure



No exposure



No expos



SANBORN MAP COMPANY
POPULATION 500
PREVAILING WINDS: N.E. & N.W.
WATER FACILITIES: SEE NOTE.
NO STEAM & NO HAND ENGINE
INDEPENDENT HOSE CART
NO HOOD & LADDER TRUCK

HAMMOND
ST. CROIX CO. WIS.
SCALE 50 FT. 1902 TO AN INCH
SEPTEMBER 11 BROADWAY, NEW YORK.

Copyright 1902 BY THE SANBORN MAP COMPANY

Chc. 262
1 Sheet

THE LIBRARY OF CONGRESS
D.C. 5: 1902
RECEIVED
CLASS. & INDEXING
3177

Note: Water facilities: 675 GAL. WATER TANK, ELEV. 30' ABV. GROUND
FILLED BY A PUMPKIN-MOUSE VERTICAL PUMP, 3 1/2" CH. & 18" STROKE,
WHICH DRAWS FROM WELL, 152' DEEP. PUMP OPERATED BY 2 1/2 HP. GASOL. ENG.
3800 OF 6" TO 4" W. MONS.; 1 DOUBLE HYDRANTS.
Fire Dept. 2: VOLUNTEER, NO REGULAR ORGANIZED CO. 1 HAND HOSE CART -
500' OF 2" NEW RUBBER LINED COTTON HOSE.

KEY

- FIRE WALL 6 INCH ABOVE ROOF
- METAL CORNICE
- BRICK ROOF
- WOOD CORNICE
- SLATE OR METAL ROOF
- FRAME PARTITION
- OPENING WITH IRON DOOR
- ELEVATOR
- STANDARD DOORS
- WINDOWS IN 1ST STORY
- WINDOWS IN 2ND & 3RD STORES
- 2 1/2" x 4 1/2"

BUILDINGS COLORED YELLOW ARE FRAME
RED BRICK
BLUE STONE
GRAY BRICK
BROWN ASBESTOS
GREEN SPECIALS
③ INDICATE RELATIVE HEIGHTS

★ FIRE STATION AS SHOWN ON KEY MAP
ALTERNATE STREET NUMBERS ARE ACTUAL
CONSISTENT

○ VERTICAL PIPE

WITH FIRE ESCAPE

● FIRE ALARM BOX

○ SINGLE FIRE HYDRANT

○ DOUBLE FIRE HYDRANT

○ WATER PIPE

○ DWELLING 2nd FLOOR

