

CLF 25171

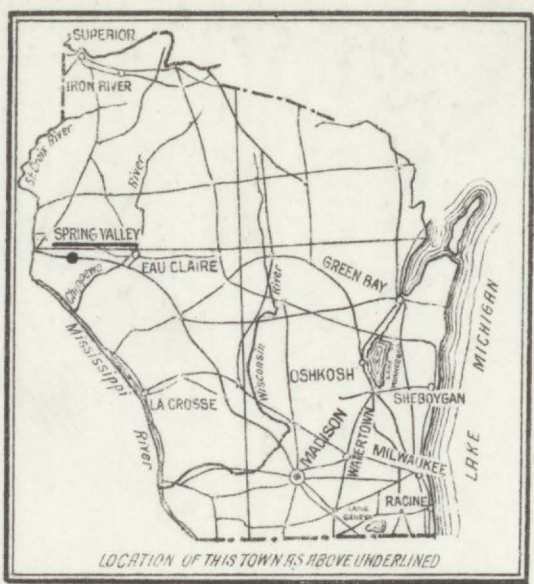
JAN 28 1913

WATER FACILITIES

Direct & Gravity Pressure system Municipal Ownership - Pumping station located as shown on sheet N-1 - single acting Fairbanks Morse deep well pump (size 24x36") cap. 144,000 gallons per diem. driven by 10 H.P. elec. motor & 10 H.P. gasol. eng. which could be used in emergency having belt connection - This pump draws from well 108' deep and supplies through 6" main reservoir which is located on hill about 1/4 mile W of pump house. Reservoir elev. 165' above business portion of town - about 1/2 mile W of town - cast iron mains - original mains laid 1889 - Ten 4" D. Hds. Average daily consumption about 20,000 gals. Average pressure 70 lbs.

FIRE DEPT.

Volunteer Co. Organized 83 members 1000' 2 1/2" Cotton Rubber Lined hose in fair condition - 2 Hand Hose Reels - 1 H & L Truck - Fire alarm bell on roof of Fire Dept. & Church Bells - Public lighting elec. arc. Topography hilly.



Chicago, St. Paul, Minneapolis & Omaha R.R.

INDEX.

SPECIALS.	SHEET	N	SHEET
Central Hotel	2	New Richmond Roller Mill Co.	1
C. St. P. M. & O. R. R. Depot	2	Norwegian Lutheran Church	1
Locomotive House	3		
City Water Works, Pumping Station	1	Opera House	2
Commercial Club House	2		
Hotel	2	Post Office	2
Congregational Church	1	Public School	2
Darling, M. S., Feed and Planing Mill	1	Roman Catholic Church	2
Fire Department	2		
High School	2	Spring Valley Brick Works	3
		Creamery Co.	3
		Iron and Ore Co.	3
		Works Co.	3
Logan & Sieberns Co., Lumber Yard & Grain Elev.	1	Light and Power Co.	1
		Spoke, Veneer and Hardwood Lumber Co.	3
Mondovia House	1	Standard Oil Co.	3

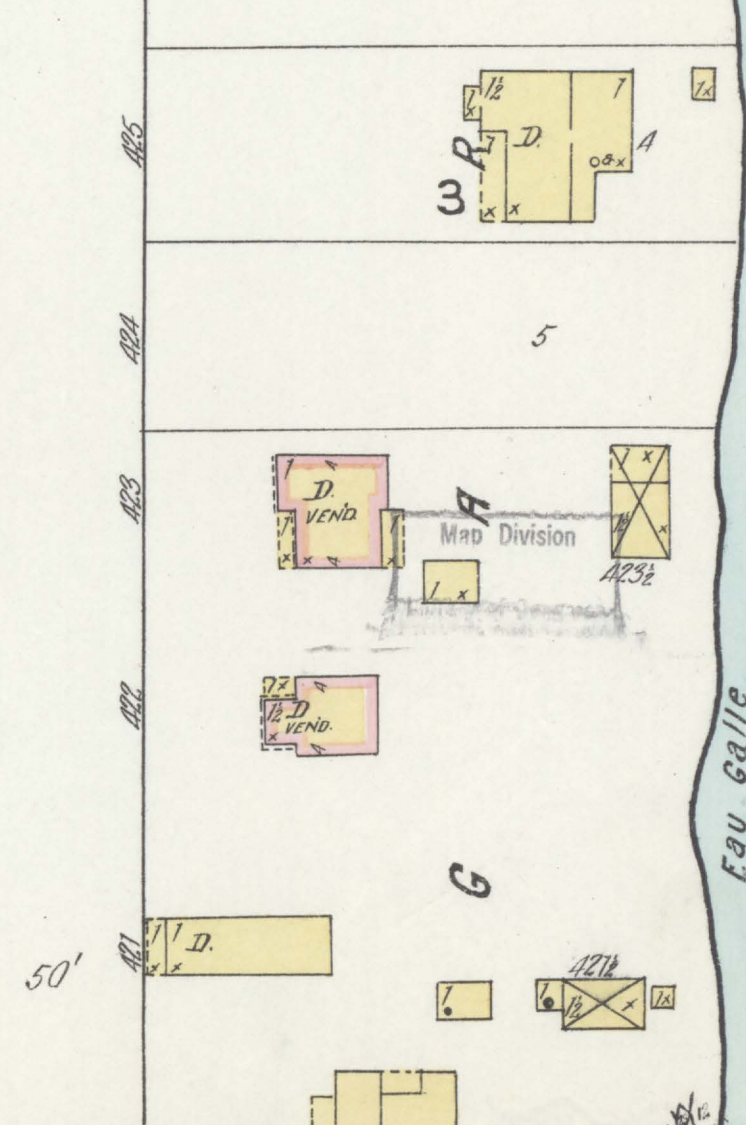
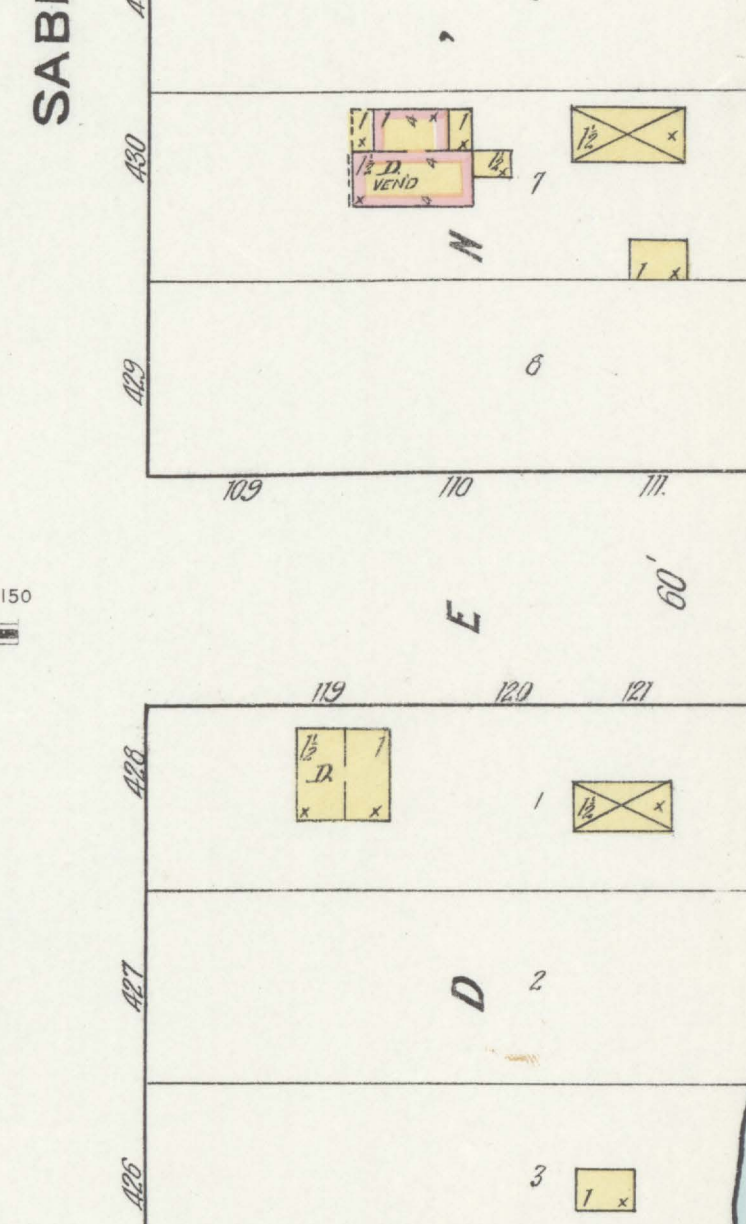
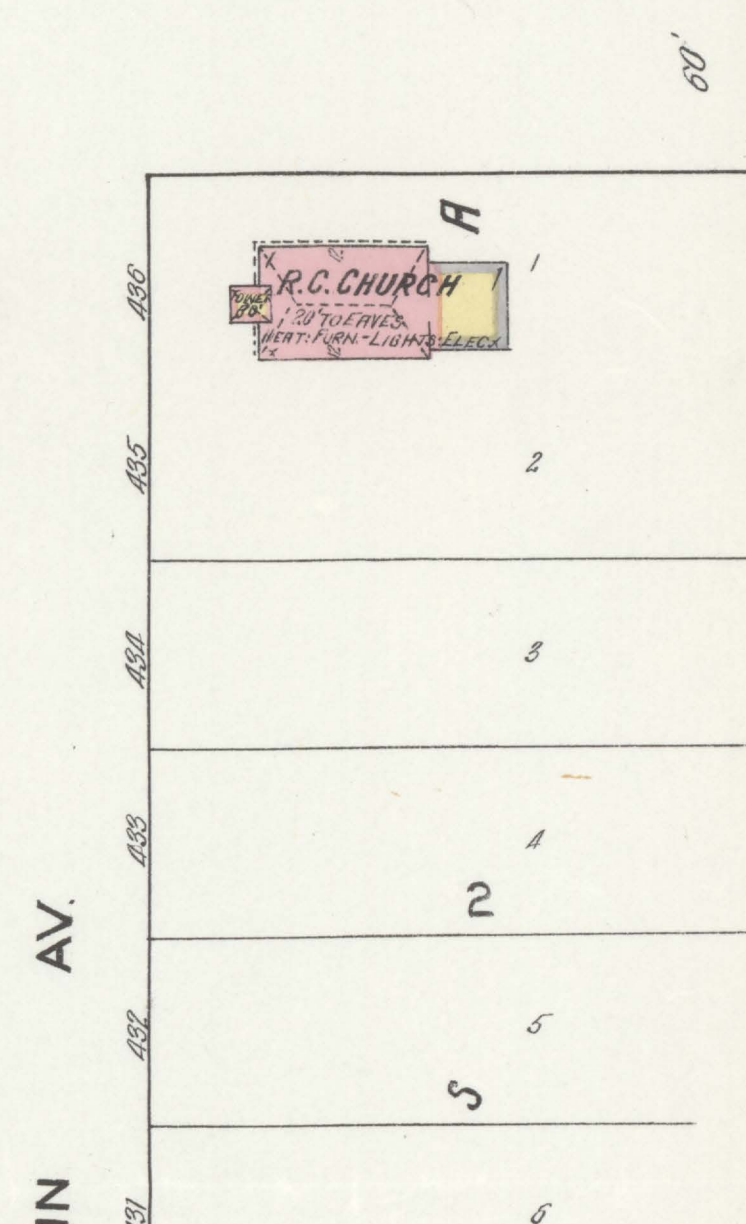
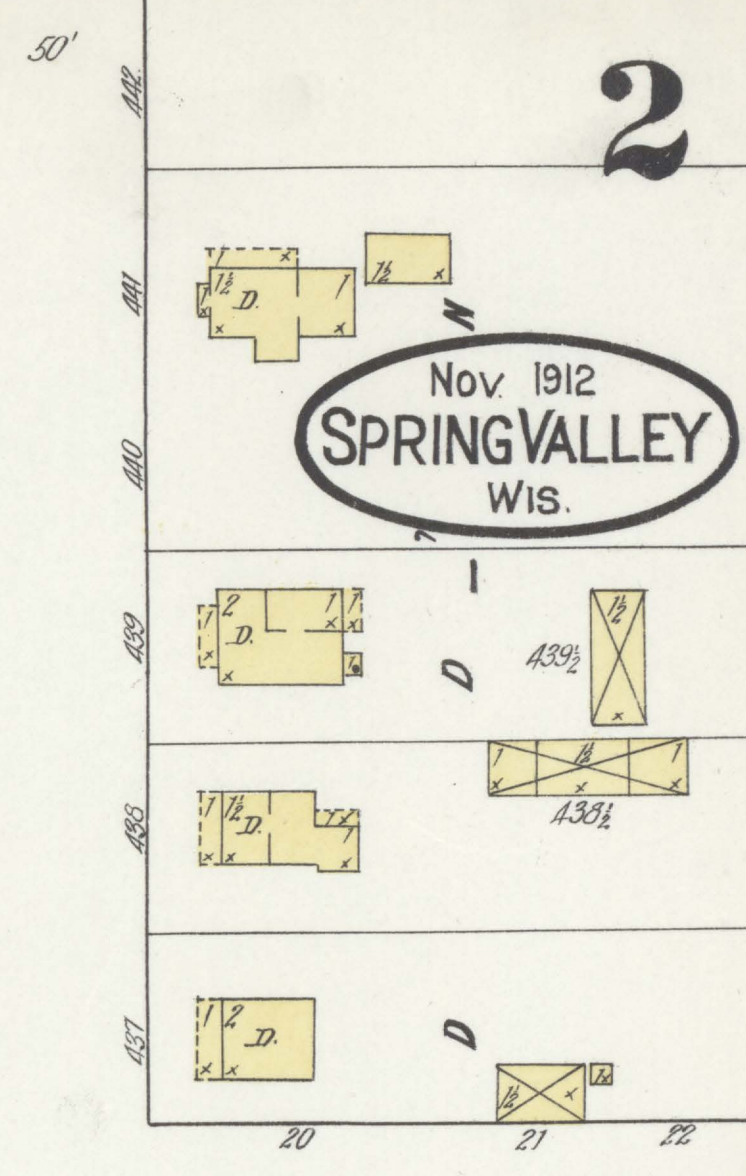
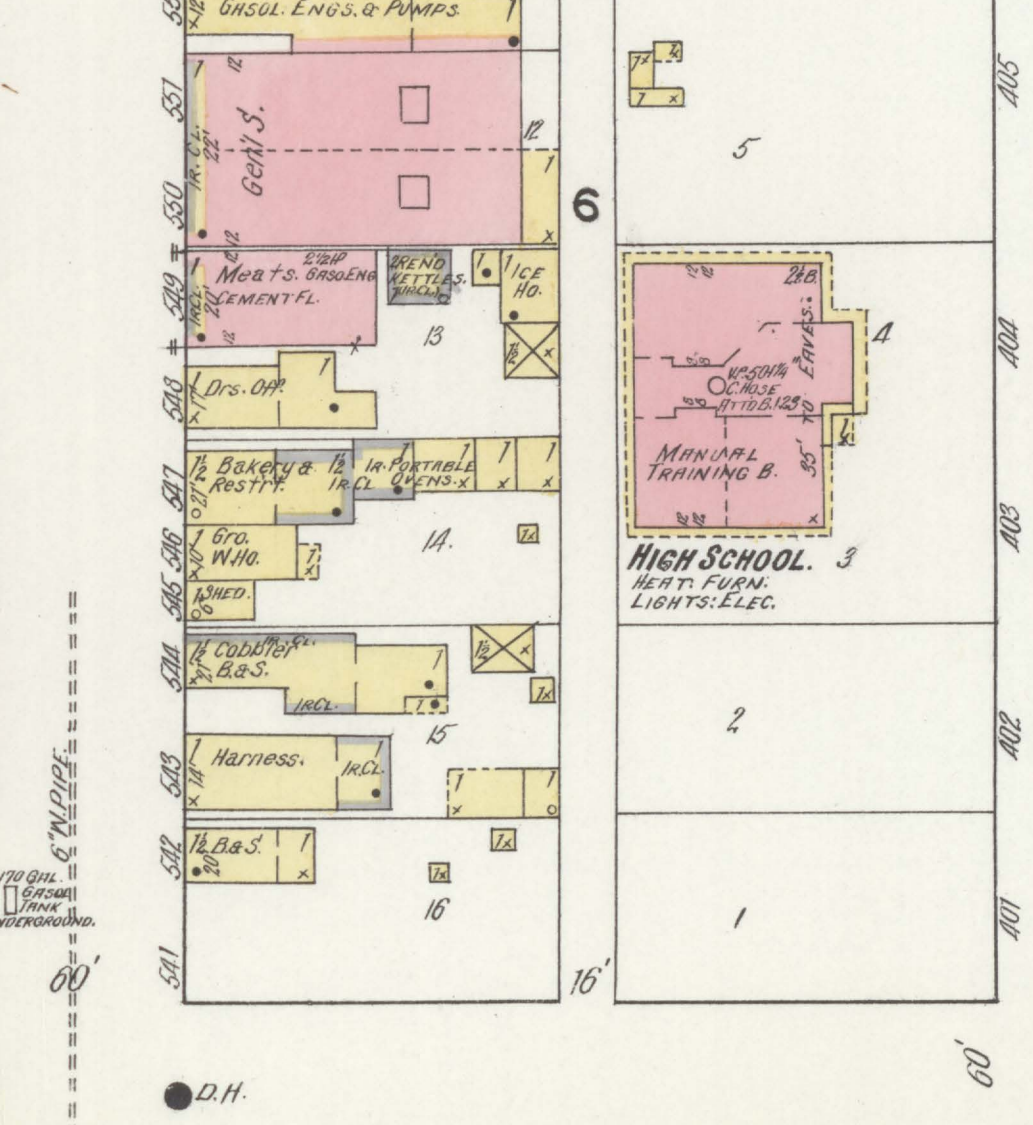
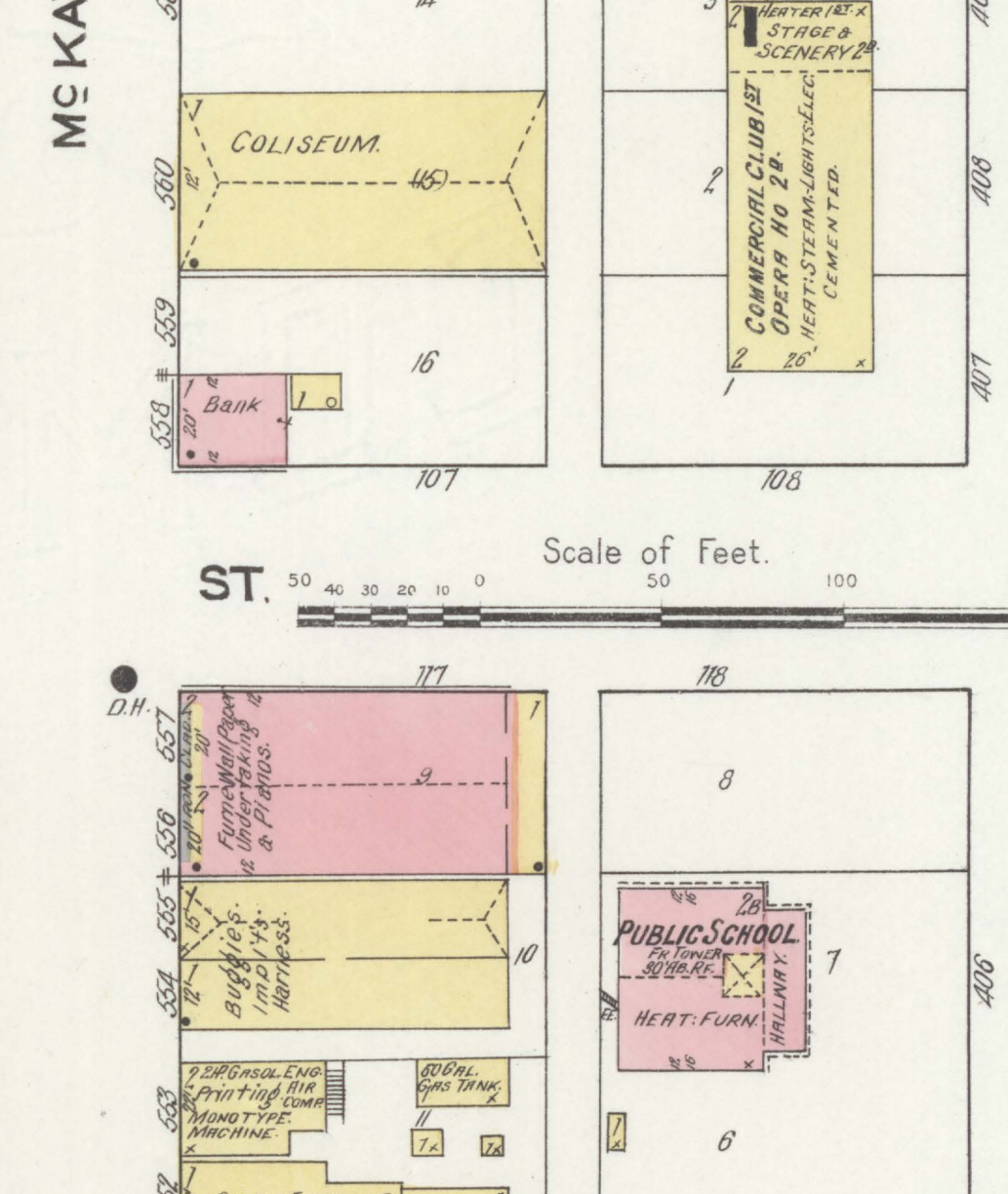
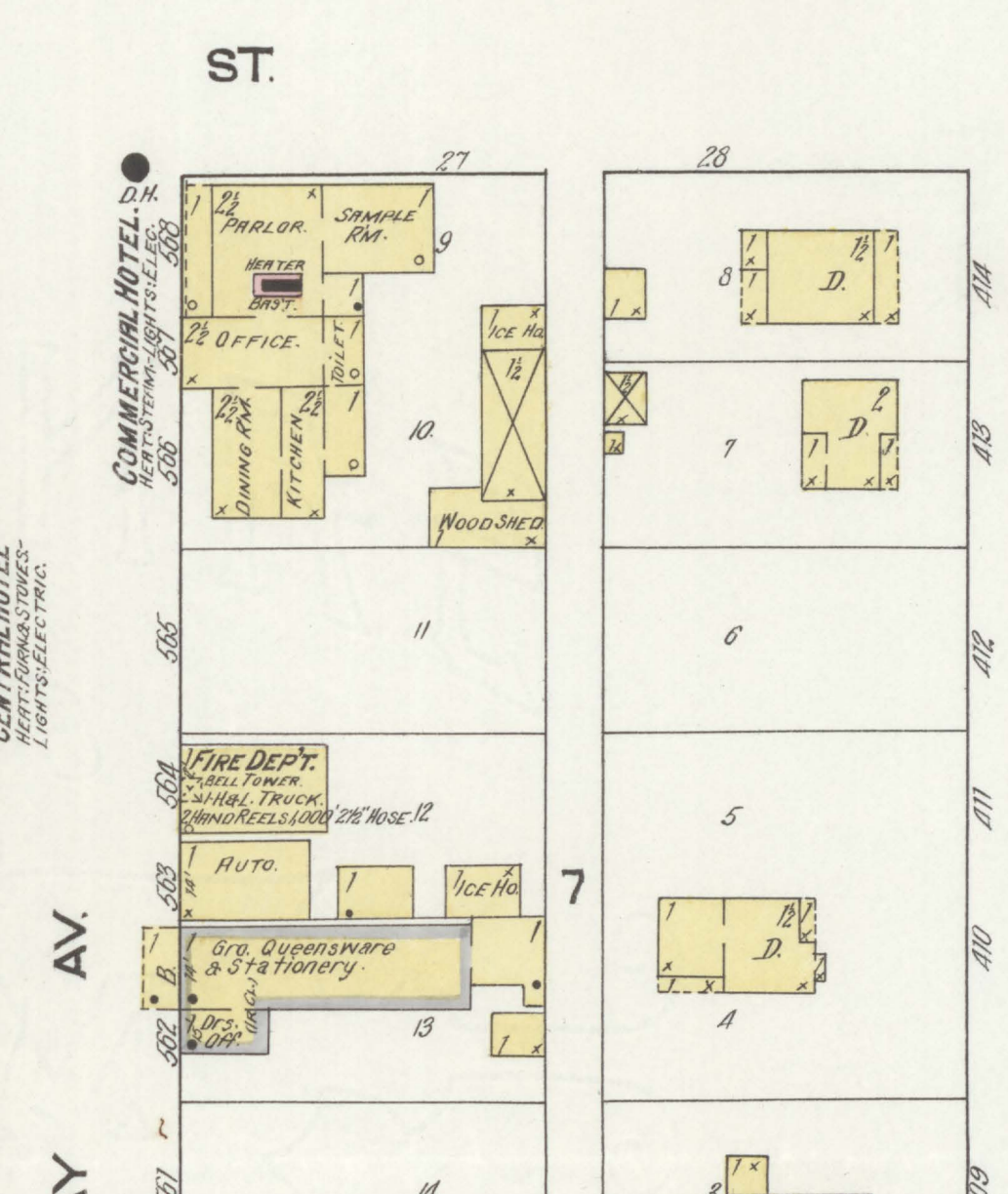
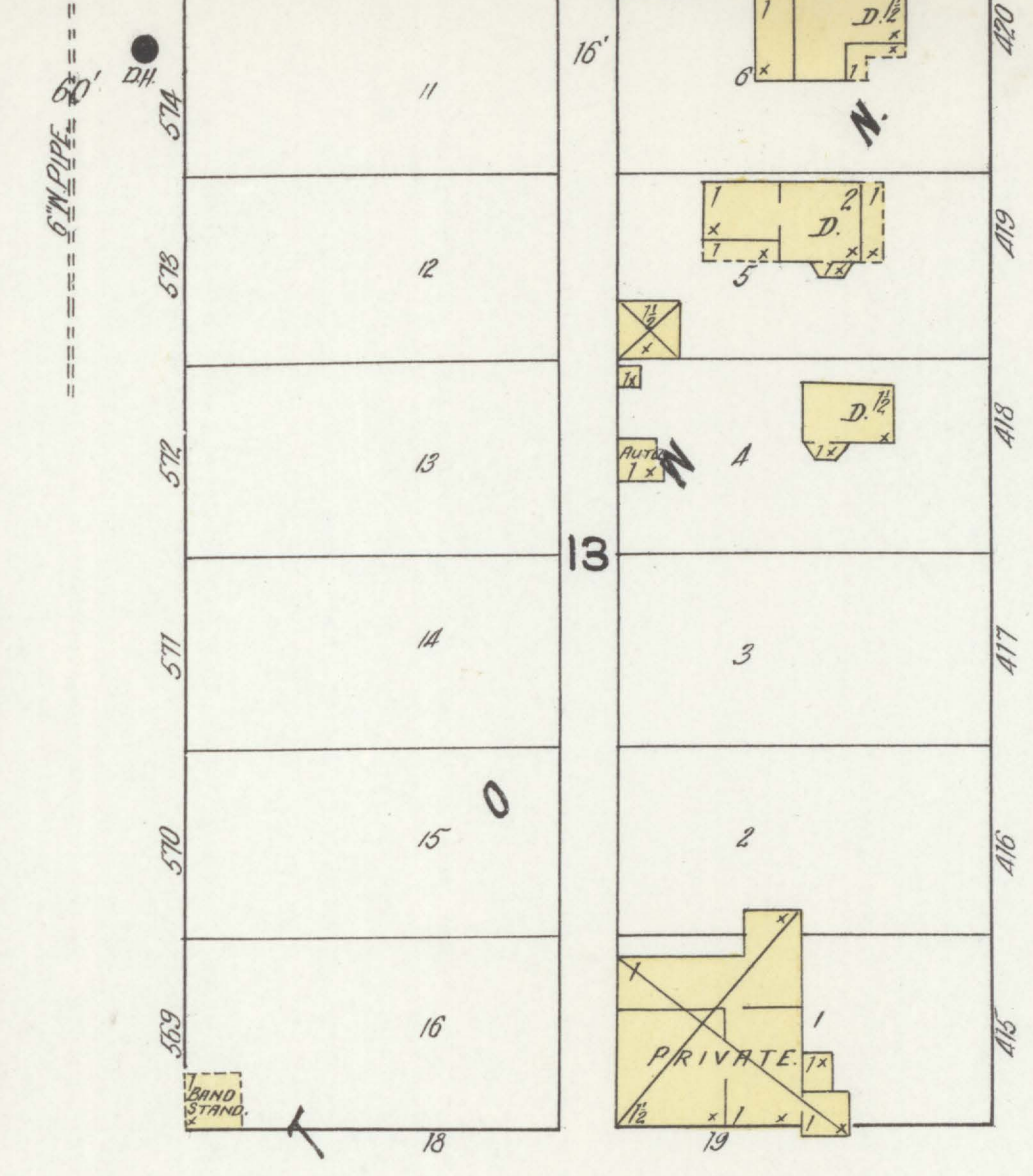
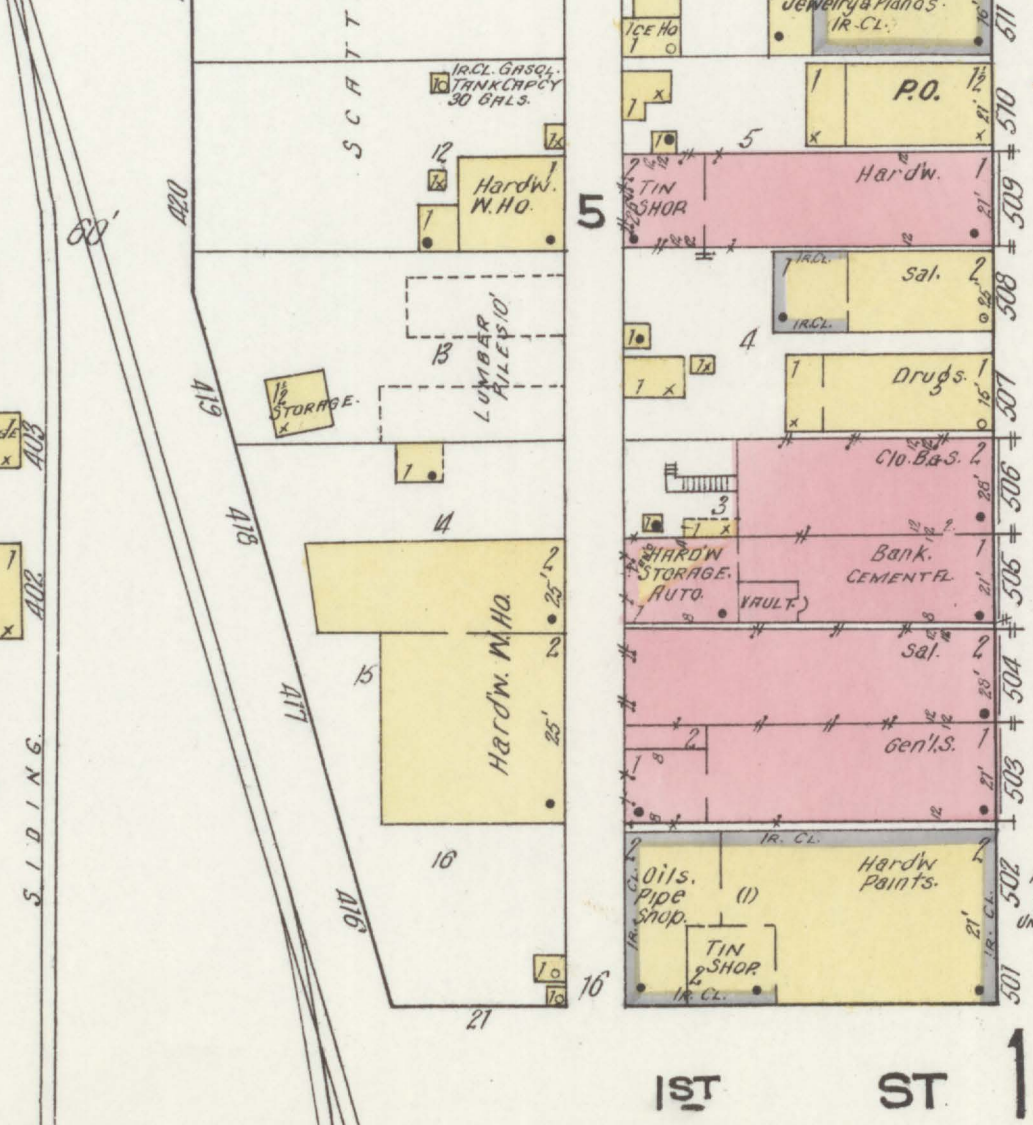
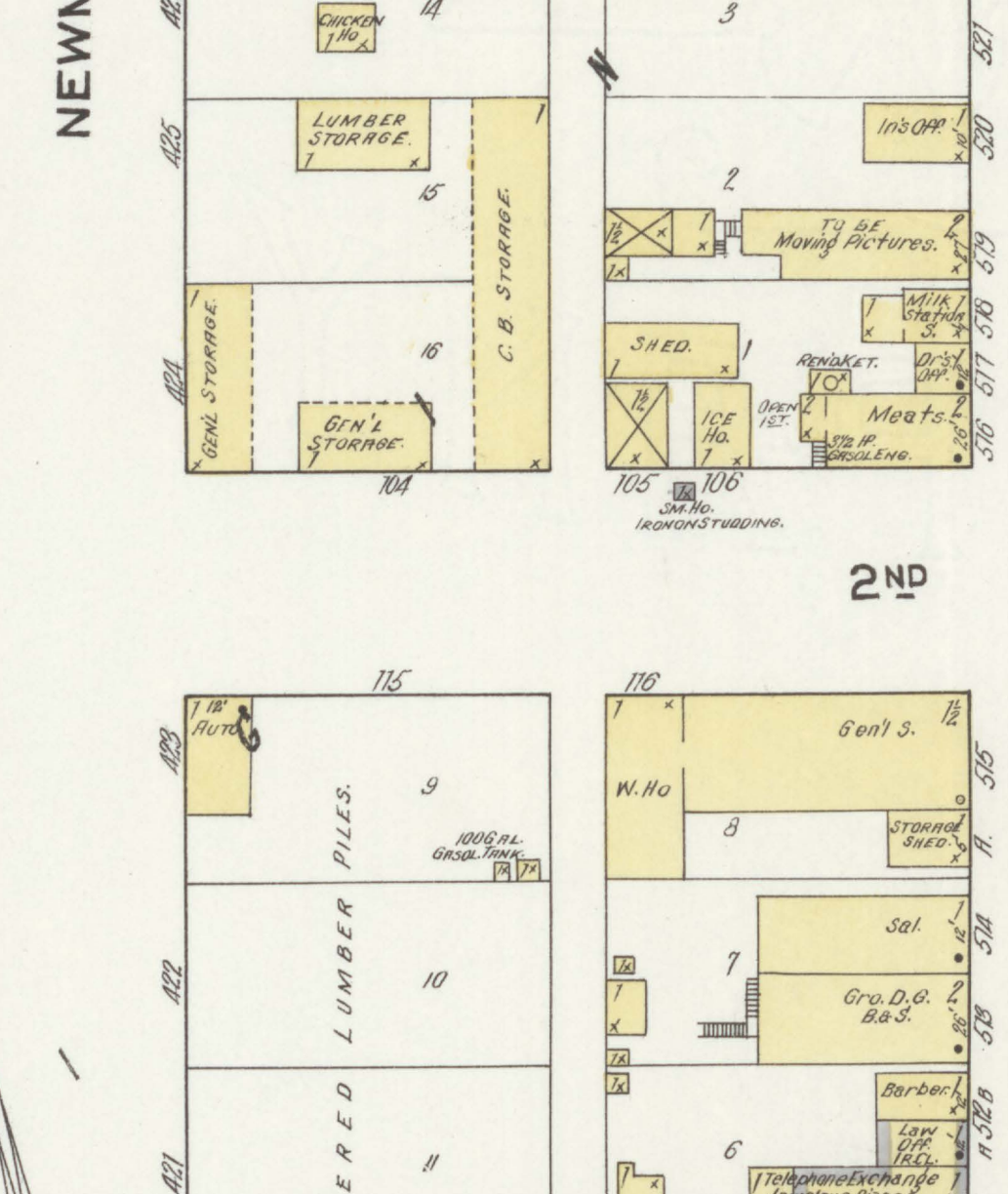
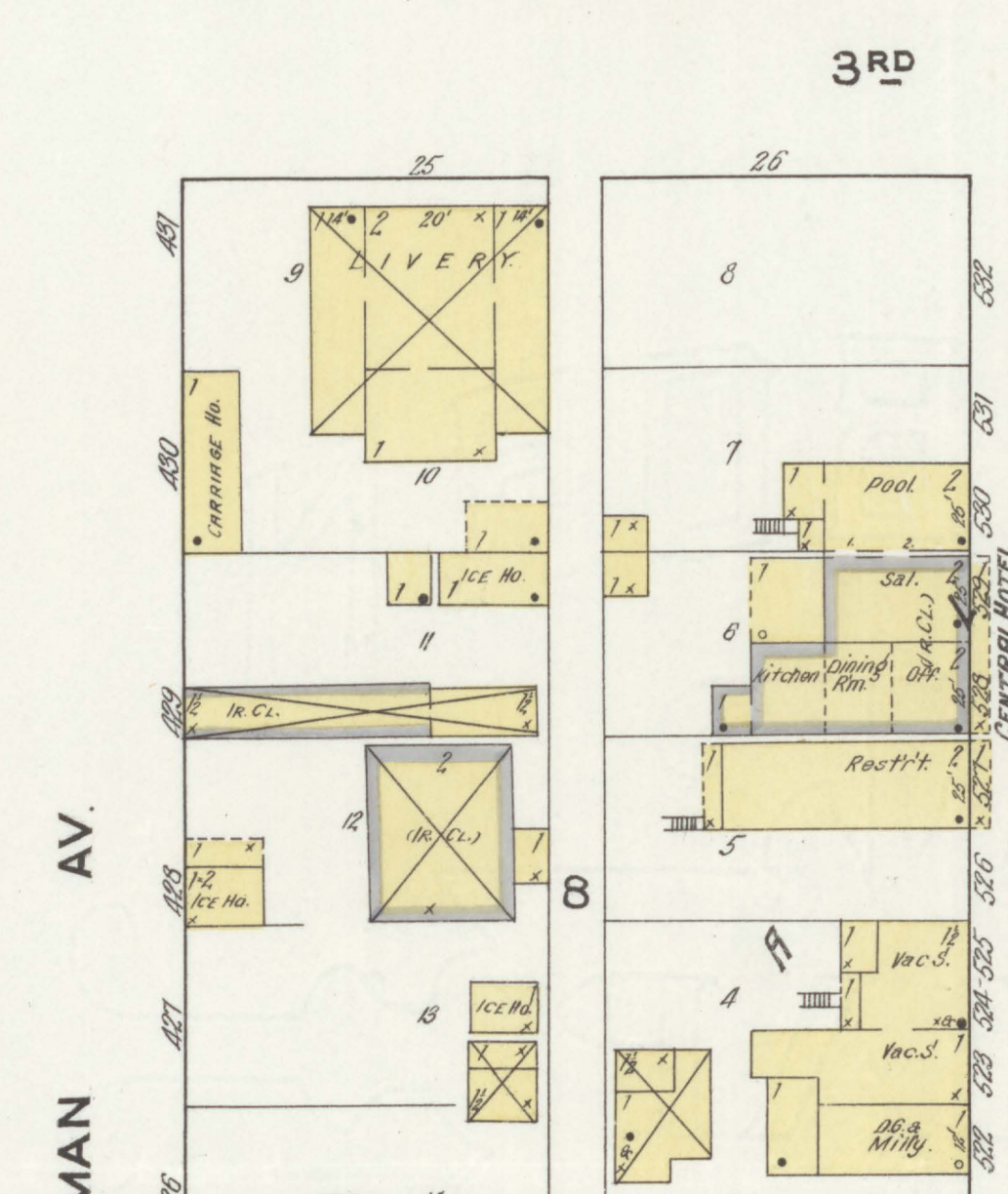
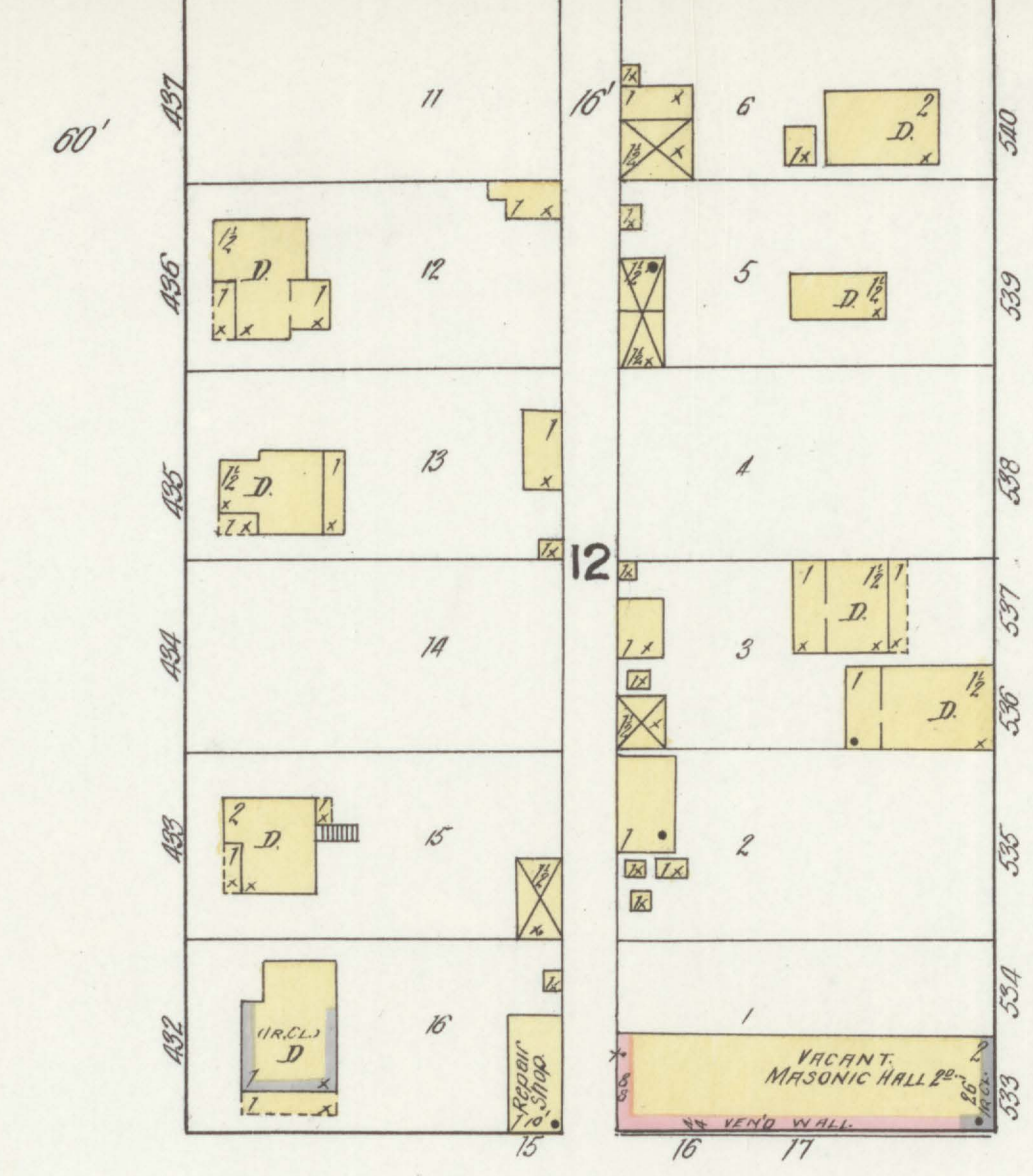
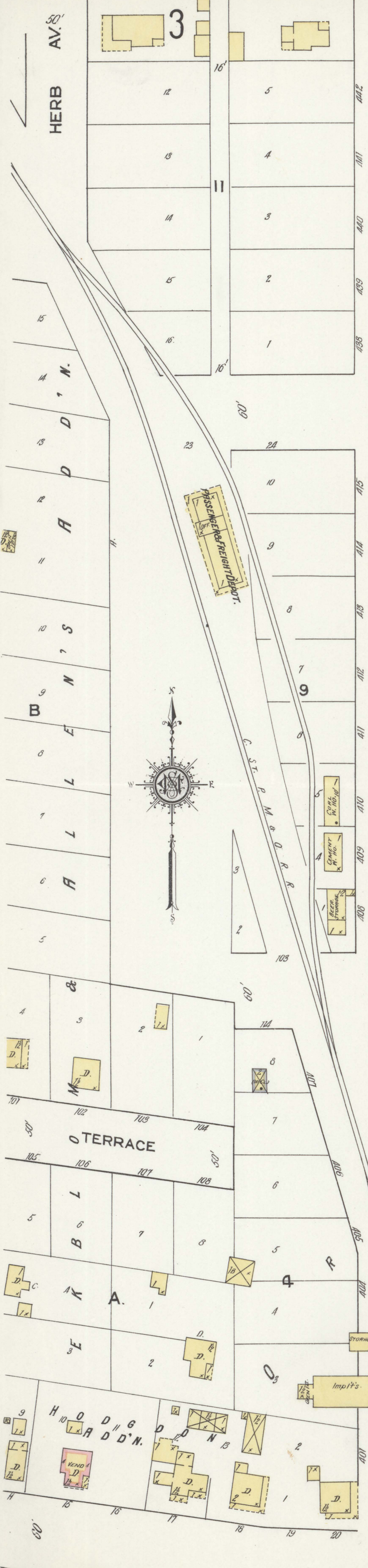
KEY

- FIRE WALL IN ABV ROOF
- METAL CORNICE
- FIRE WALL IN ABV ROOF
- WOOD CORNICE
- FIRE WALL IN ABV ROOF
- FRAME PARTITION
- OPENING WITH IRON DOOR
- STANDARD
- IRON DOOR
- WINDOWS & IRON SHUTTERS
- WINDOW 1ST STORY
- WINDOWS 1ST & 2ND STORIES
- 2ND & 4TH

STABLE BUILDINGS COLORED YELLOW ARE FRAME
 RED BRICK
 BLUE STONE
 GRAY IRON
 BROWN FIRE PROOF

③ ② INDICATE RELATIVE HEIGHTS
 FIRE STATION, AS SHOWN ON KEY MAP
 ALTERNATE STREET NUMBERS ARE ACTUAL
 CONSECUTIVE STREET NOS ARE ARBITRARY





Nov. 1912
SPRINGVALLEY
 Wis.

3RD ST.

ST.

2ND ST.

ST.

1ST ST.

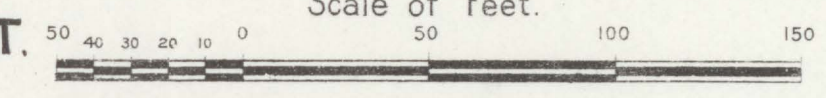
ST.

NEWMAN AV.

MC KAY AV.

SABIN AV.

Scale of Feet.



Fau Galle