

Lake St. Croix

Lake St. Croix

WATER SUPPLY
 2 ARTESIAN WELLS, 28000 GAL. RESERVOIR ON HILL 240' ABOVE ST. LEVEL. 100' 5/8 MILES OF PIPING & 3-50 HYDRANTS, 1 DOUBLE BARRE PUMP, 50000 GALS. PER 24 HRS. CAP. 1000' OF RUBBER & 100' OF COTTON 2 1/2" HOSE.
 FIRE DEPT. CONSISTS OF CHIEF & 27 VOLUNTEERS. ONE 4 WHEEL & TWO 2 WHEEL HOSE CARTS. 1 HOSE & LADDER TRUCK. 100 INCAND. ELEC. LIGHTS USED IN BUSINESS PORTION OF TOWN.

SANBORN - PERRIS MAP CO. LIMITED
 117 & 119 Broadway
 NEW YORK
 Population 5500
 Steam & Hoiland Engines
 Independent Hoss Carts
 Water Facilities - SEE NOTE
 Prevailing Winds N. W.
HUDSON
 ST. CROIX CO. WIS.
 AUG. 1891.
 SCALE 50 FT. TO AN INCH.
 COPYRIGHT 1891, BY THE SANBORN - PERRIS MAP CO. LIMITED.

6 SHEETS #404
 C. ST. P. M. & O. R. R.
 SHOPS

32338
 W

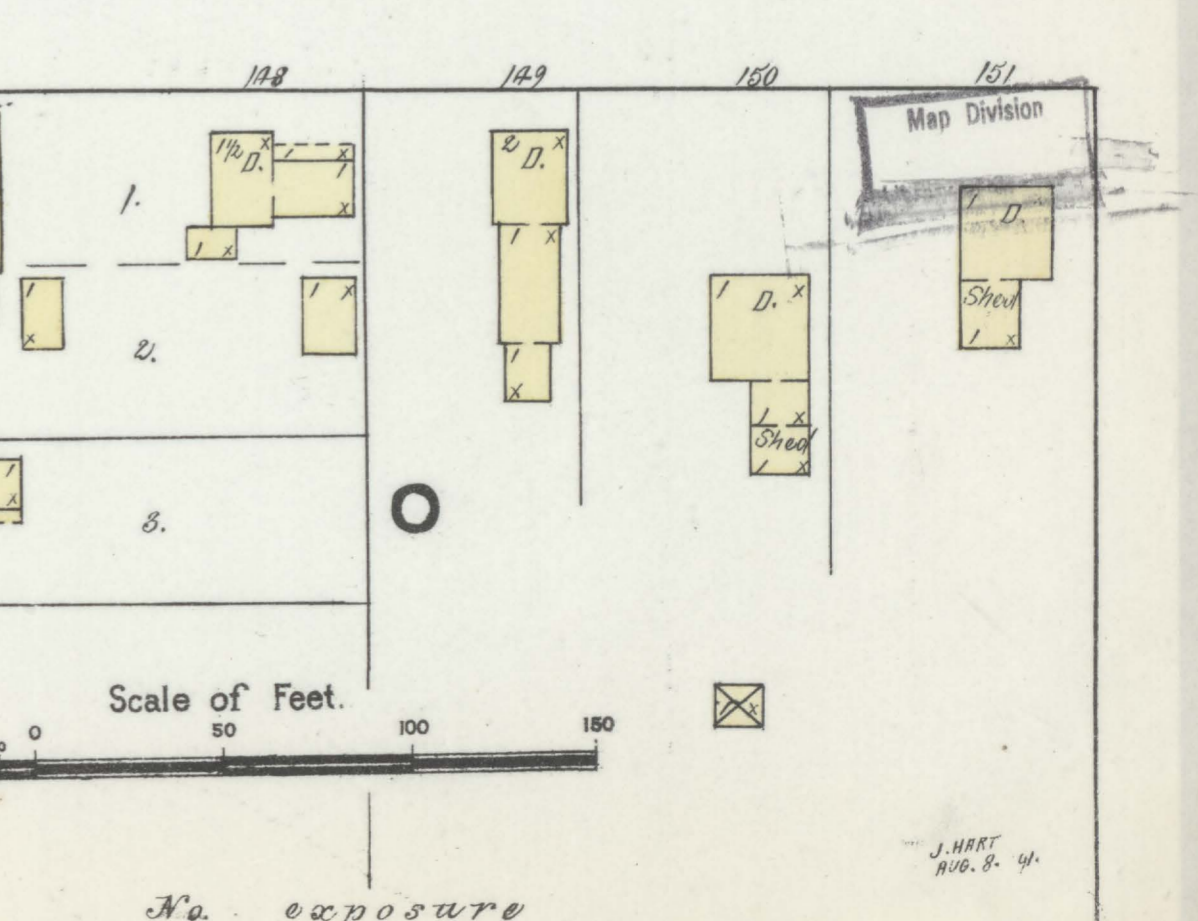
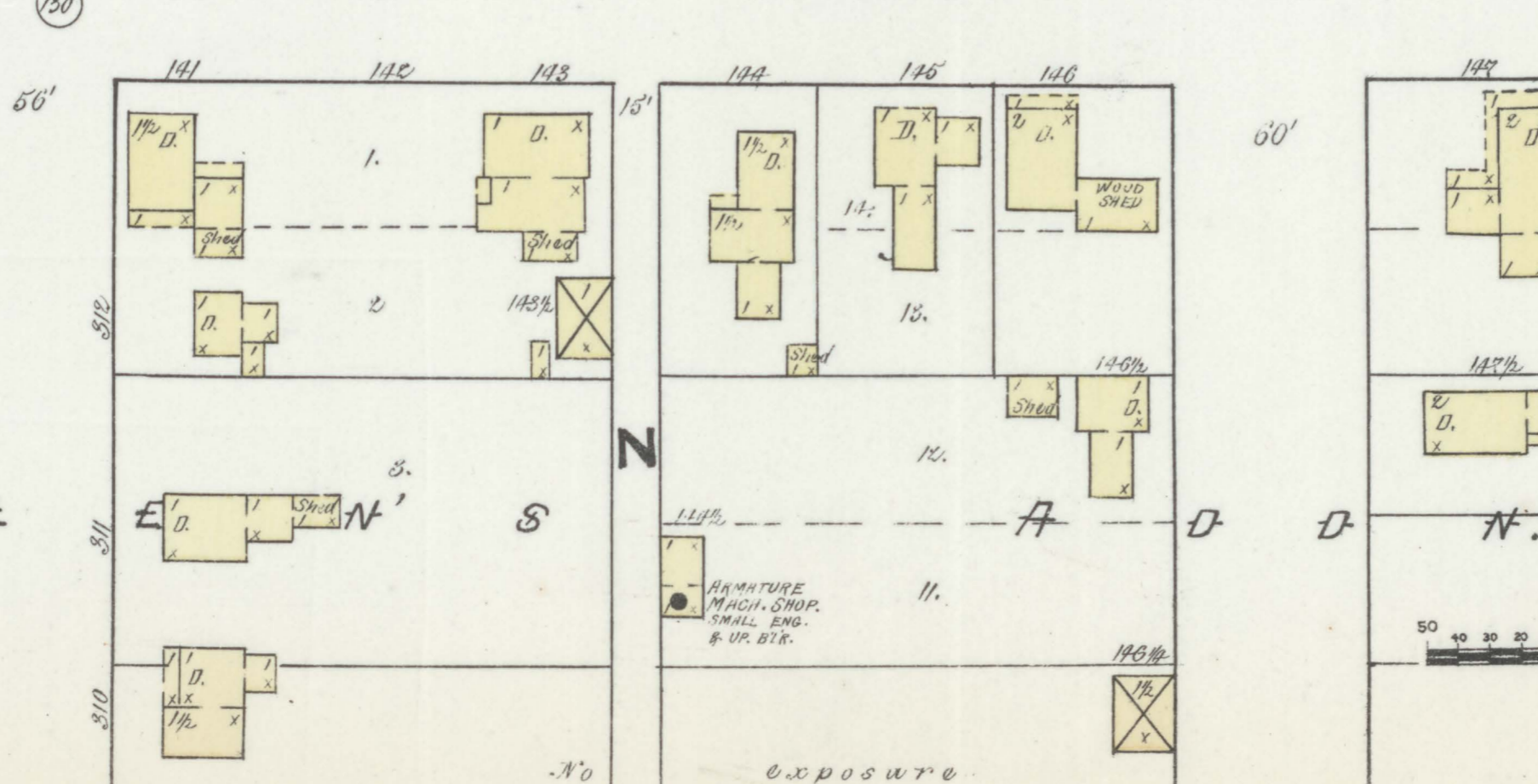
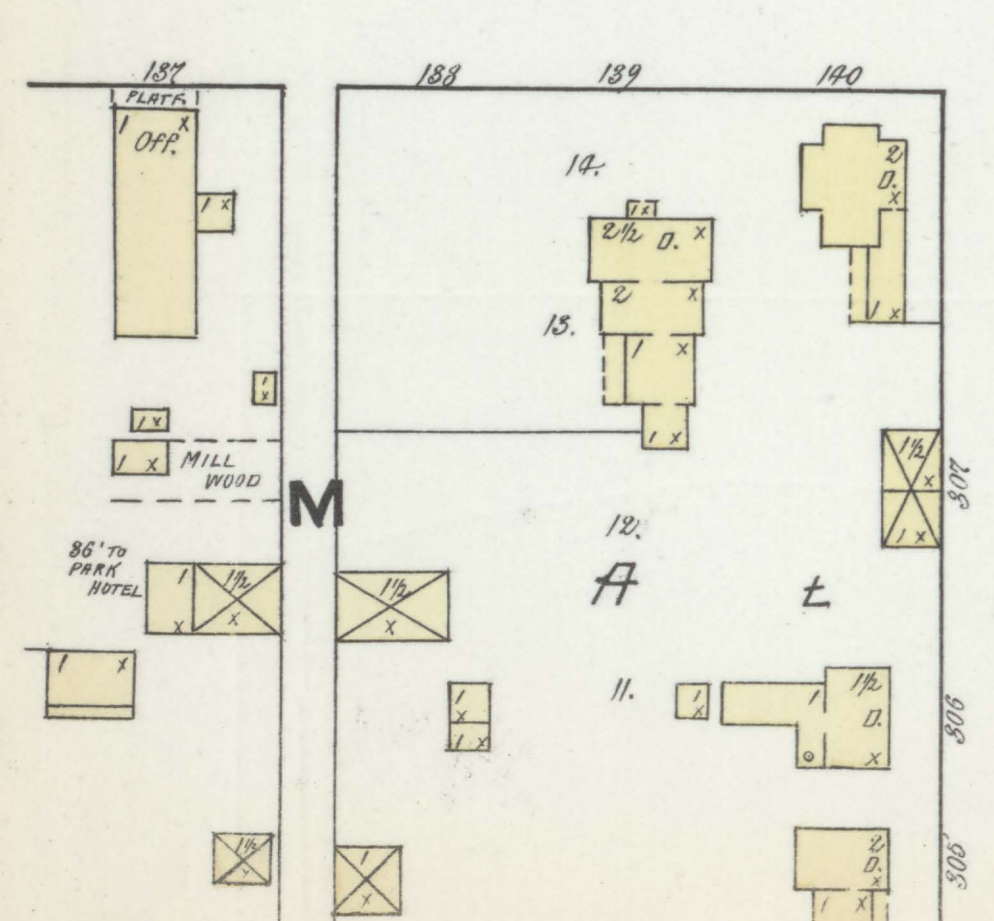
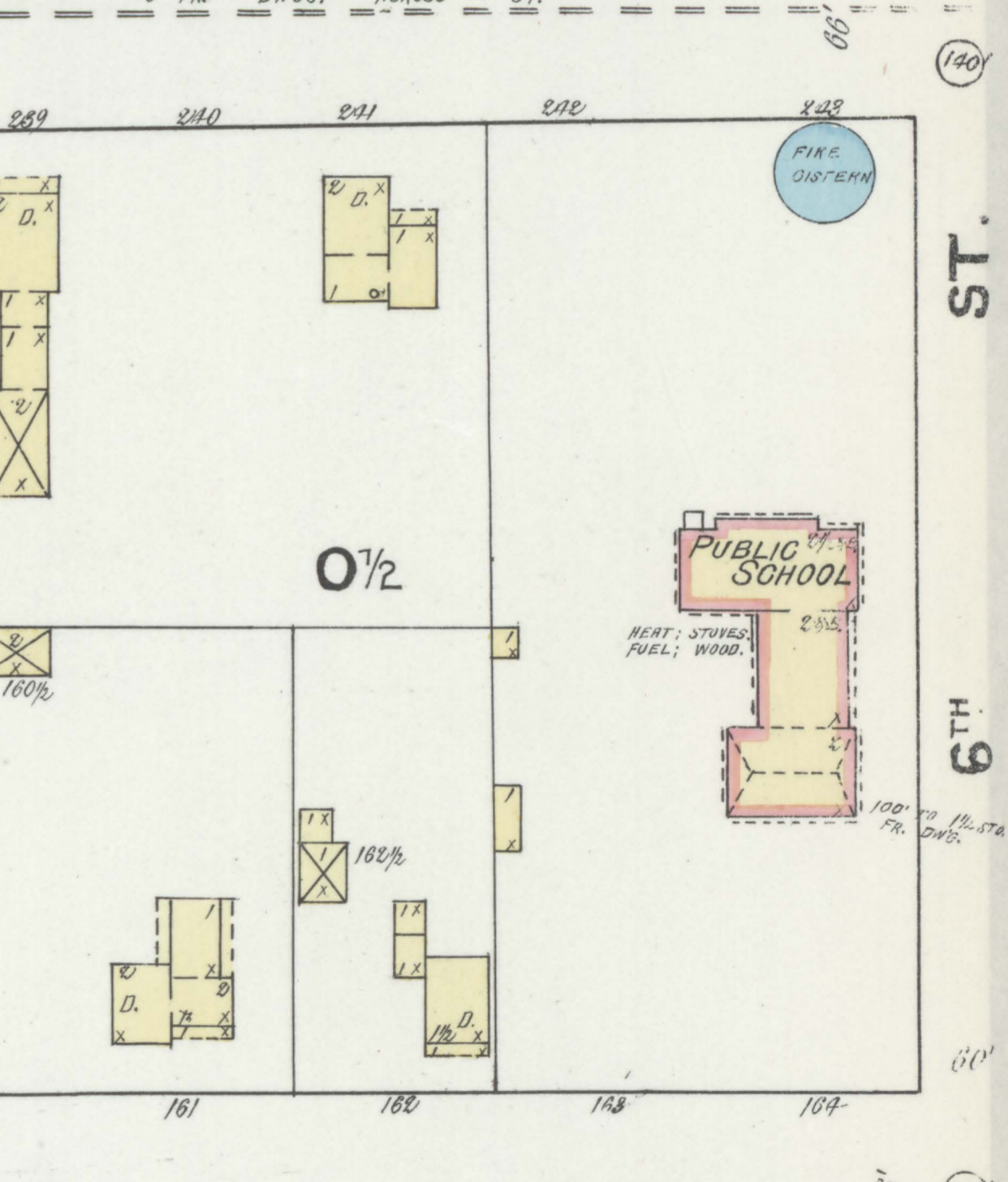
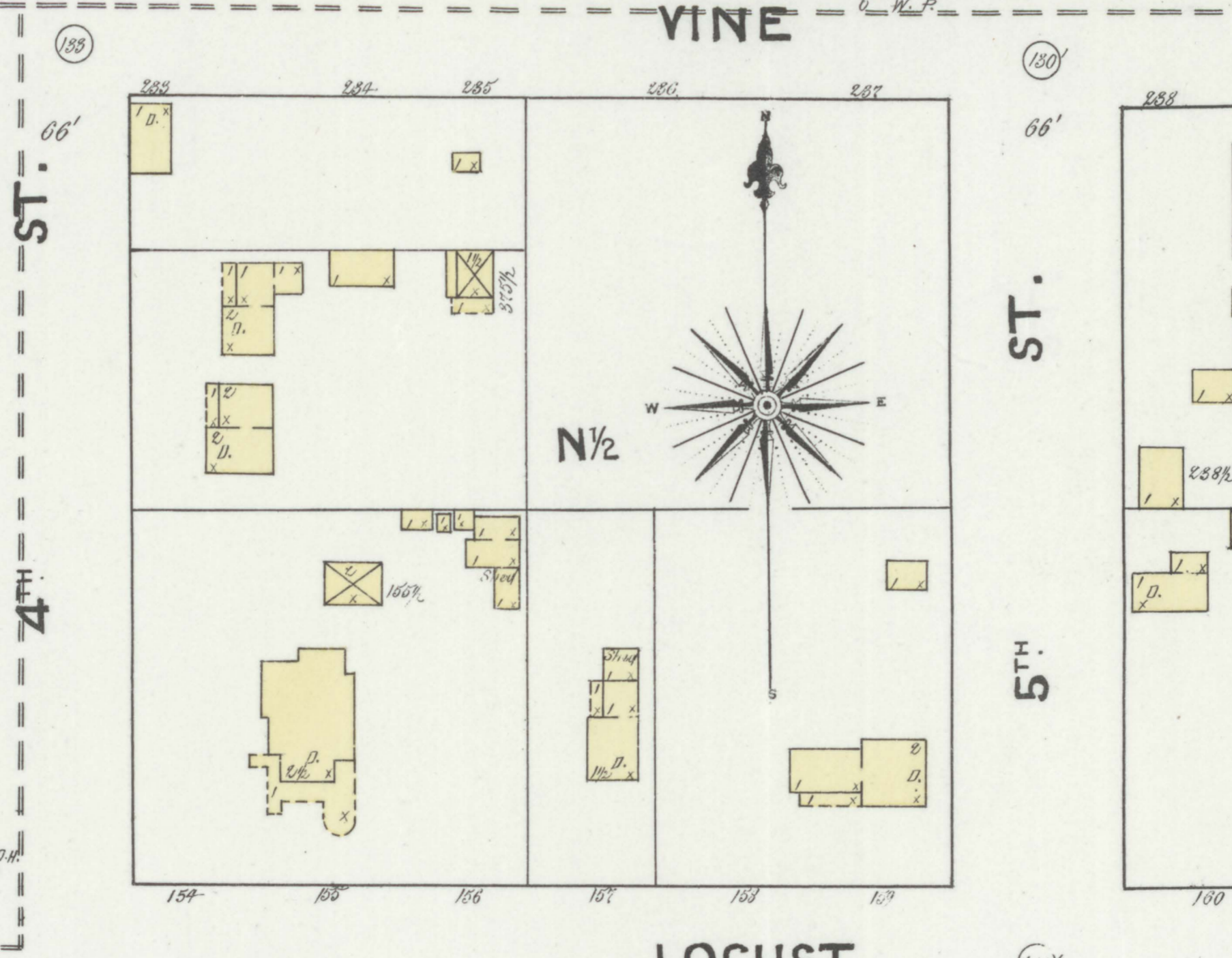
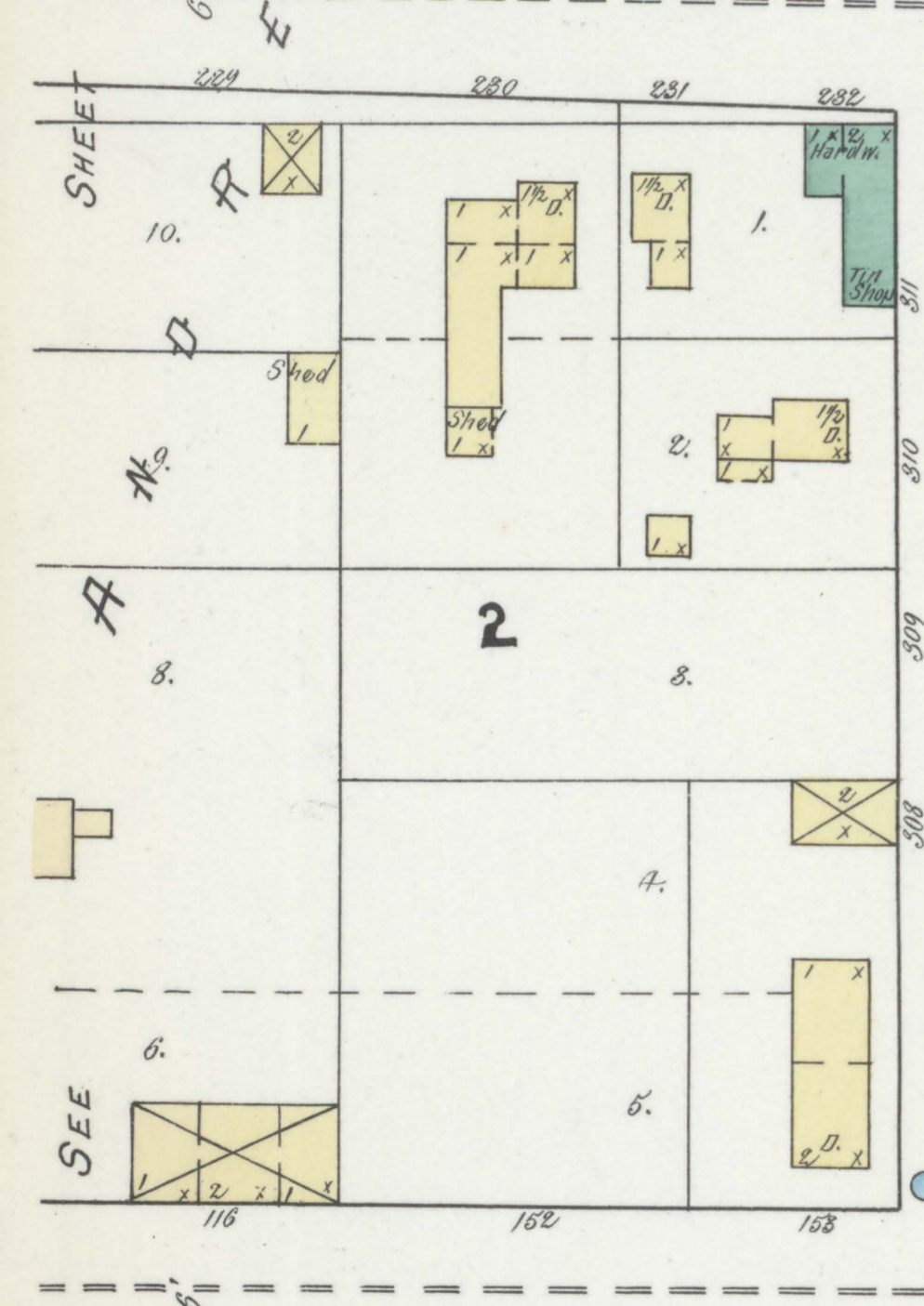
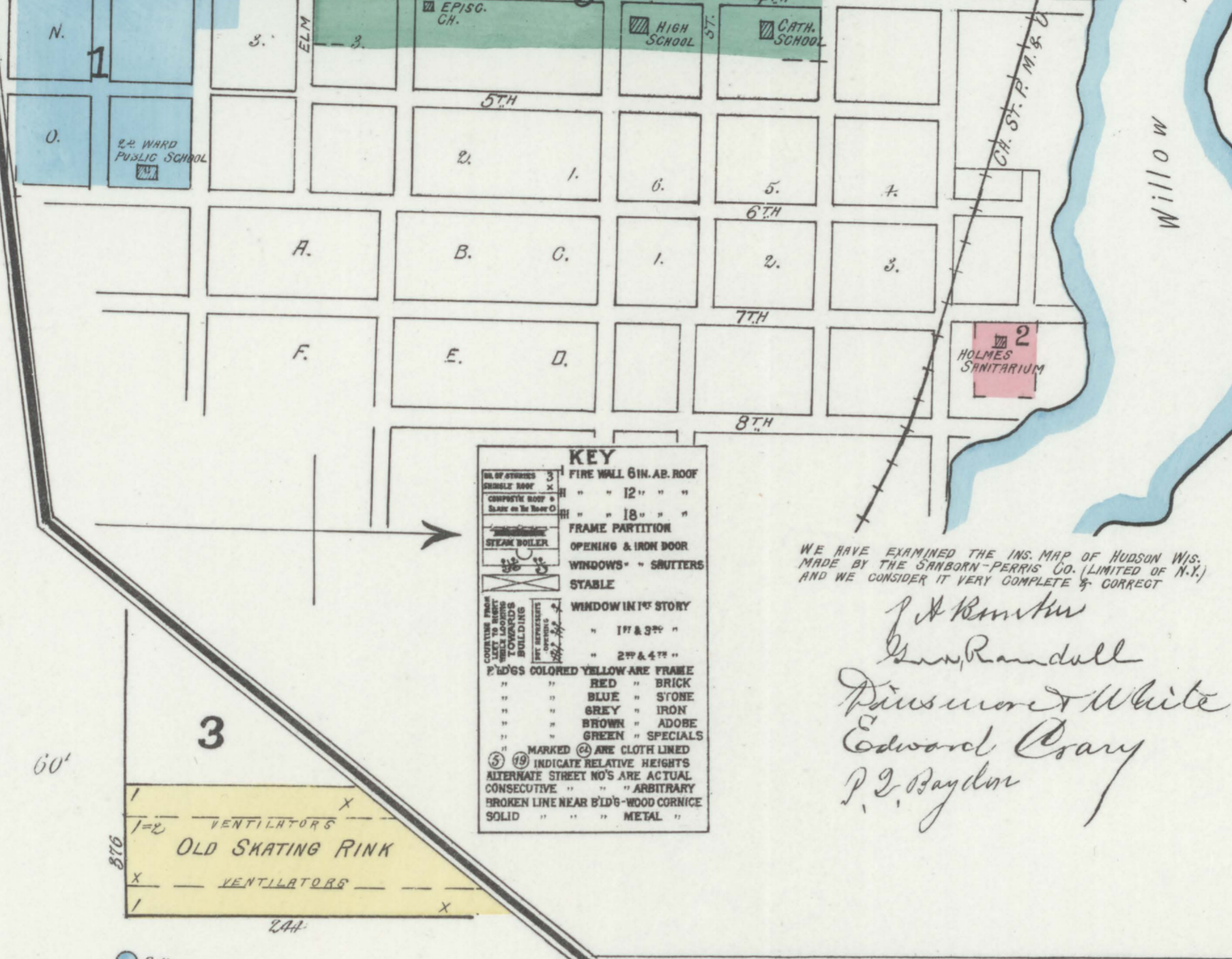
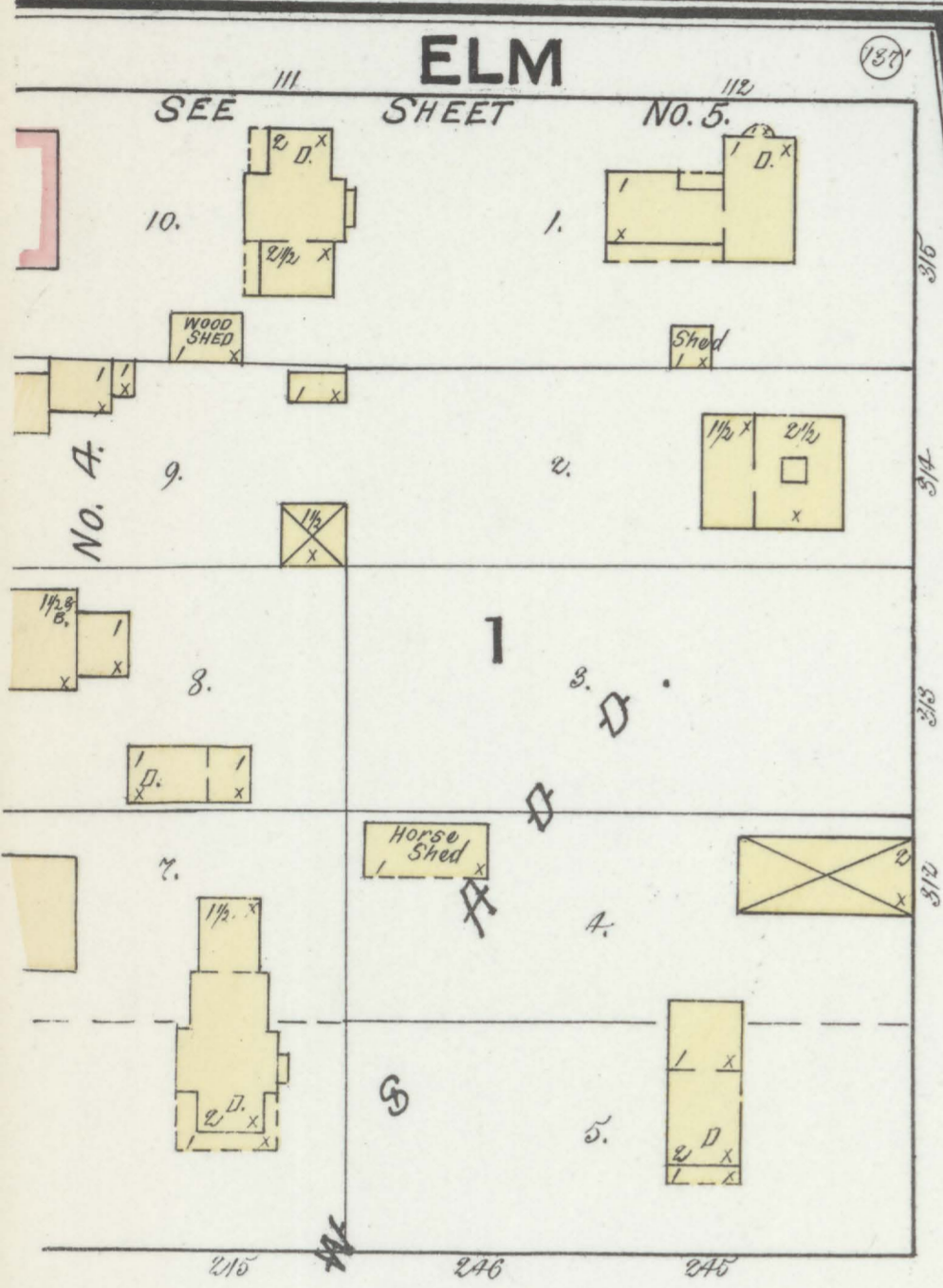
INDEX.

SPECIALS.		
A	High School	5
	Hochstein, A. & S., Brewery	2
1	Holmes Sanitarium	2
4	Hudson Feed Mill	2
2	Artesian Brewery	3
	" Furniture Co.	2
	" Saw Mill Co.	2
B	Baptist Church	4
3	Brunswick Hotel	3
	Larson, A. P., Cooperage	3
C	Catholic Church & School	5
4	Central Hotel	4
4	Chapin Hall Hotel	2
2	C. St. P. M. & O. R. R. Depot	2
6	" " " Shops	6
3	C. St. P. M. & O. R. R. Depot (River Falls Branch)	3
3	Christiana House	5
2	City Brewery	2
2	" Pumping Station	2
4	Commercial Hotel	4
5	County Court House	5
E	Ebenezer Luth. Church	5
5	Evans, W. S., Groc. Warehouse	3
F	First Ward School	3
H	Hall, M. B., Feed Mill	2
2	Hanson Hotel	2
L	Methodist Episc. Church	4
N	Norwegian Lutheran Church	5
P	Park Hotel	4
5	Presbyterian Church	5
R	Reidel, G., Brewery	2
S	St. Croix Feed Mill	3
2	" " Hotel	2
5	" John's Episc. Church	5
1	Second Ward Public School	1
T	Town Hall	4
W	Willow River Mill Co.	6
2	Wittrout, I. D., Sanitarium	2

WE HAVE EXAMINED THE ING. MAP OF HUDSON WIS. MADE BY THE SANBORN-PERRIS CO. (LIMITED OF N.Y.) AND WE CONSIDER IT VERY COMPLETE & CORRECT.
J. A. Remick
Henry Randall
Dariusson & White
Edward Cray
P. J. Baylon

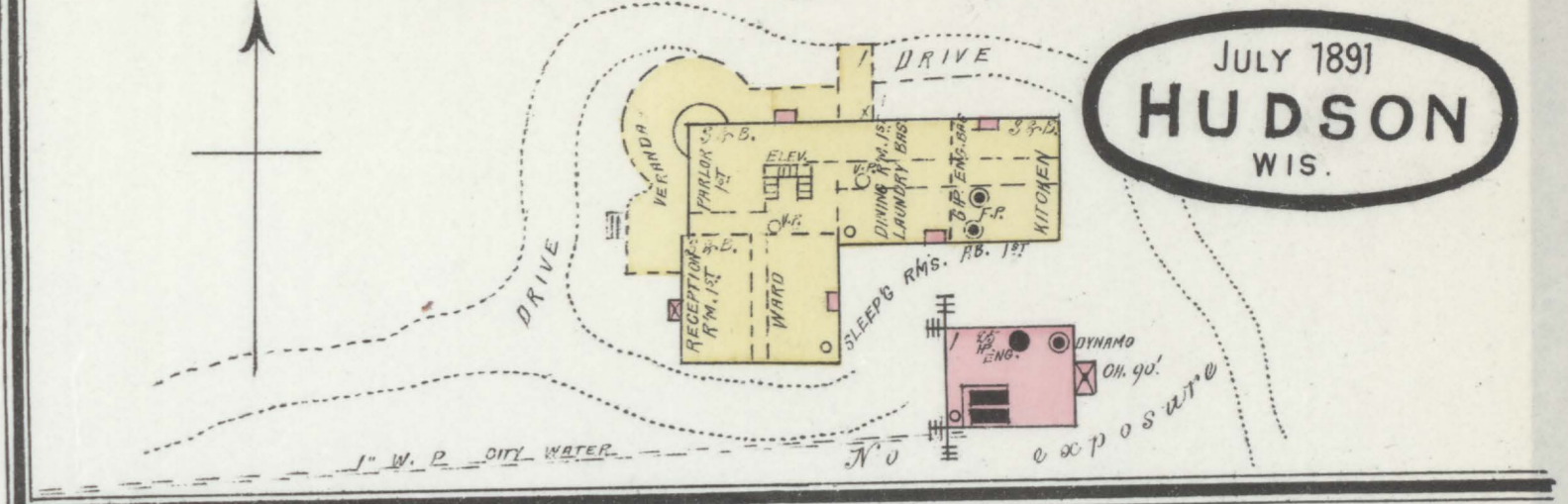
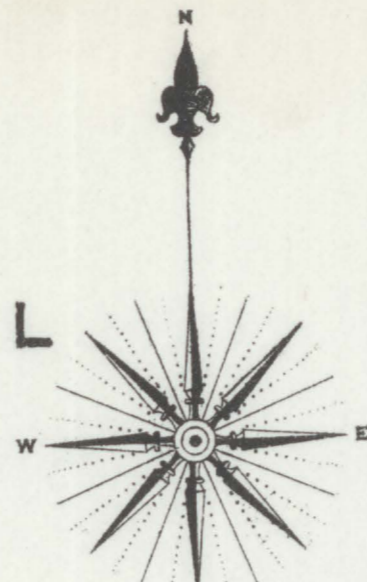
KEY

- FIRE WALL 6 IN. AB. ROOF
- COMPOSITE ROOF
- FRAME PARTITION
- OPENING & IRON DOOR
- WINDOWS - SHUTTERS
- STABLE
- WINDOW IN 1ST STORY
- LOGS COLORED YELLOW ARE FRAME
- RED - BRICK
- BLUE - STONE
- GREY - IRON
- BROWN - ADOBE
- GREEN - SPECIALS
- MARKED (C) ARE CLOTH LINED
- (S) INDICATE RELATIVE HEIGHTS
- ALTERNATE SHEET NO'S ARE ACTUAL
- CONSECUTIVE " " ARBITRARY
- BROKEN LINE NEAR BLDG - WOOD CORNICE
- SOLID " " METAL "



HOLMES SANITARIUM - DR. I. D. WILTROUT PROP.
HEAT: STEAM. FUEL: MILLWOOD. LIGHT: INCANDESC. (LOW TENSION CURRENT).
BUFFALO DUPLEX P. PUMP. SIZE 8 1/2" X 10" X 2". 500 GAL. TANKS. ADV. ELEV.
CHIMNEYS FOR ORNAMENT. 2" 5' STAND PIPES. EACH HAVING 3" HOSE ATT.
ON EACH FLOOR.

JULY 1891
HUDSON
WIS.



Willow River Mill Pond

ARTESIAN BREWERY
A. S. HOCHSTEIN PROP.
HORSE POWER, LIGHTS, CANDLES.
MAN SLEEPS ON PREMISES.
CITY WATER. 150' HOSE.

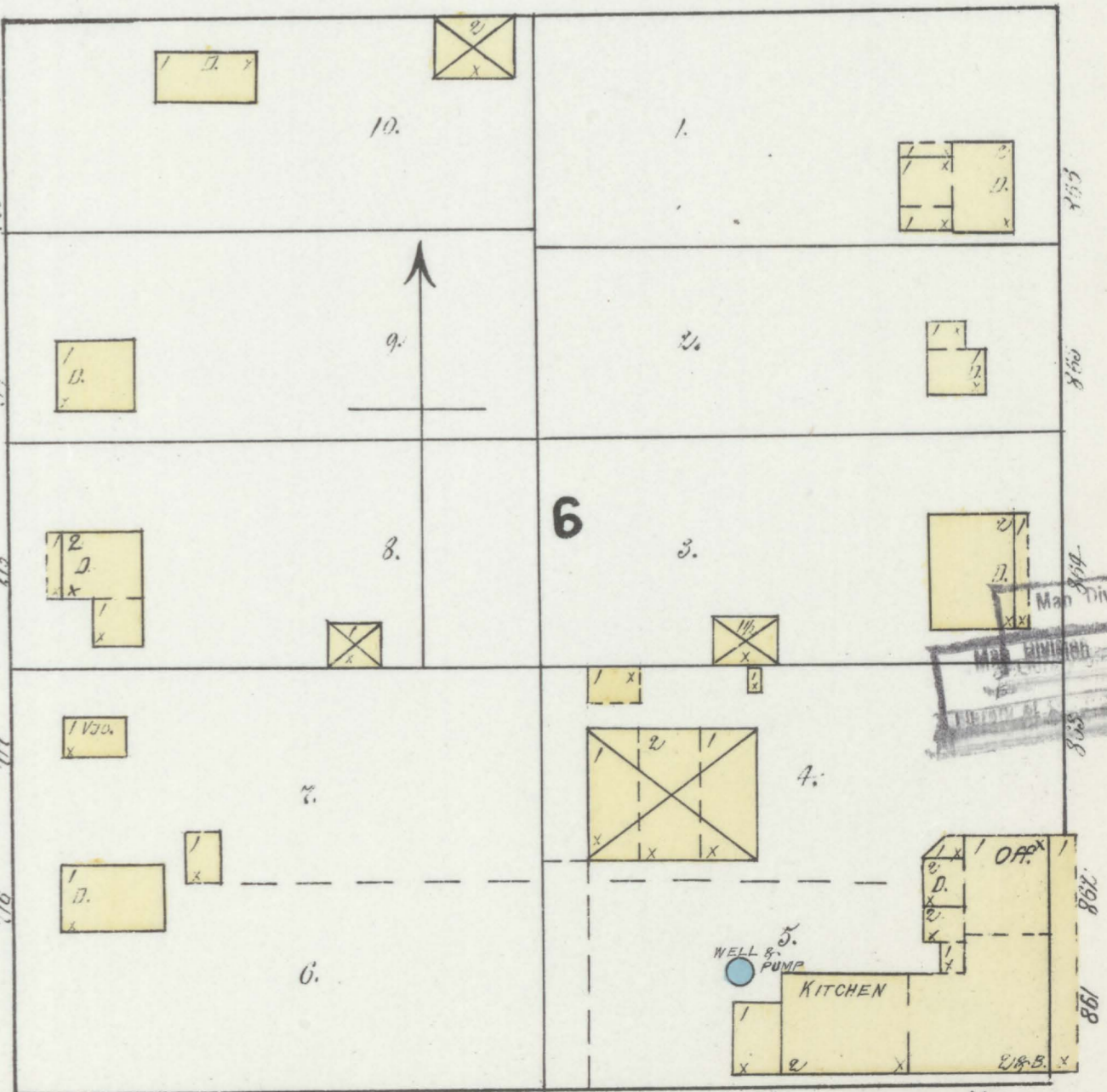
MENOMONEE STAGE RD.
HANSON HOTEL

GEO. REIDEL BREWERY

ORANGE

FRONT

ST.



MERCHANTS HOTEL

ELM

No. 3.

BUCKEYE

HAZEL

ST.

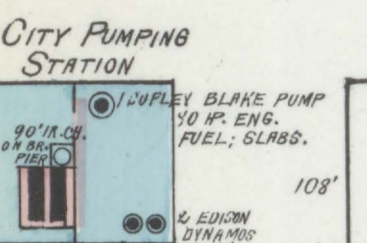
2ND

ST. CROIX

THE HUDSON SAW MILL CO'S
PLANING & SAW MILLS

NIGHT & SUNDAY WATCHMAN.
LIGHTS: ELECTRIC.
POWER: STEAM.
FUEL: SAWDUST.
NO 1 BLAKE PUMP IN PLANING MILL.
NO 1 BLAKE PUMP IN END RM. OF SAW MILL.
WATER BALS ON RT. OF PLANING MILL.
5' IN YARD.

LUMBER PILES
900' LONG
THEY SHINGLE & LATH



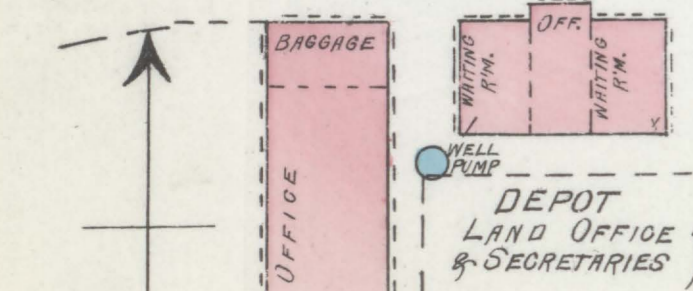
FRONT

A

LUMBER

Lake

CH. ST. P. M. & O. R. R.

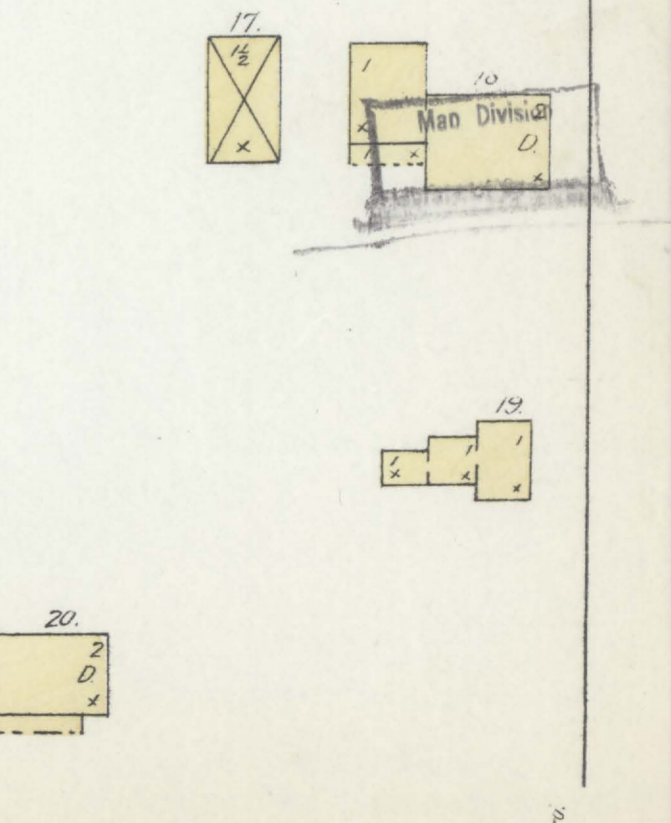
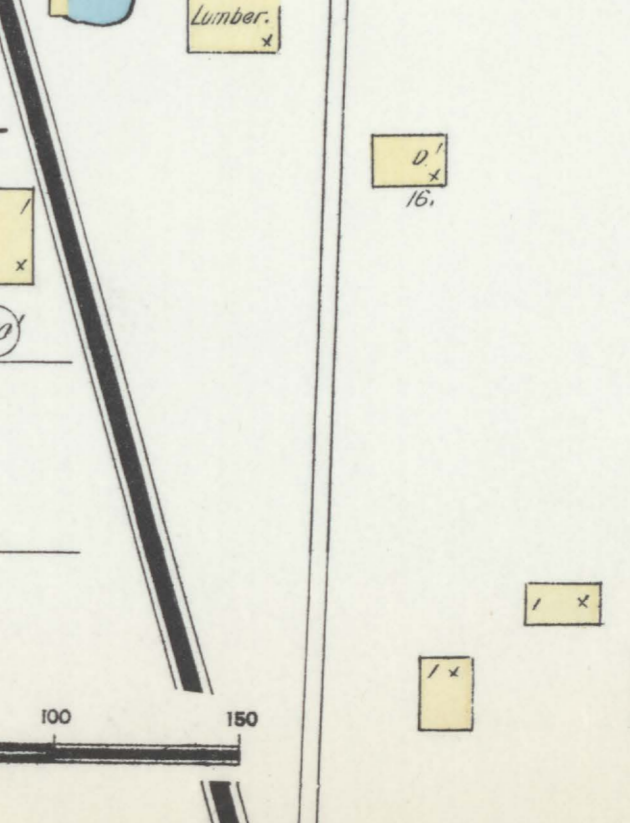
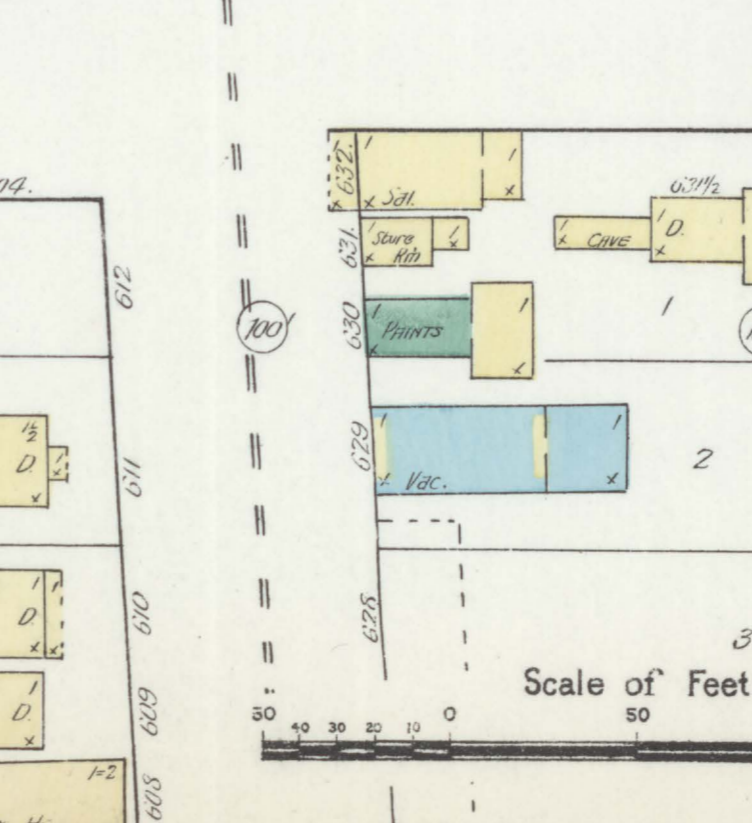
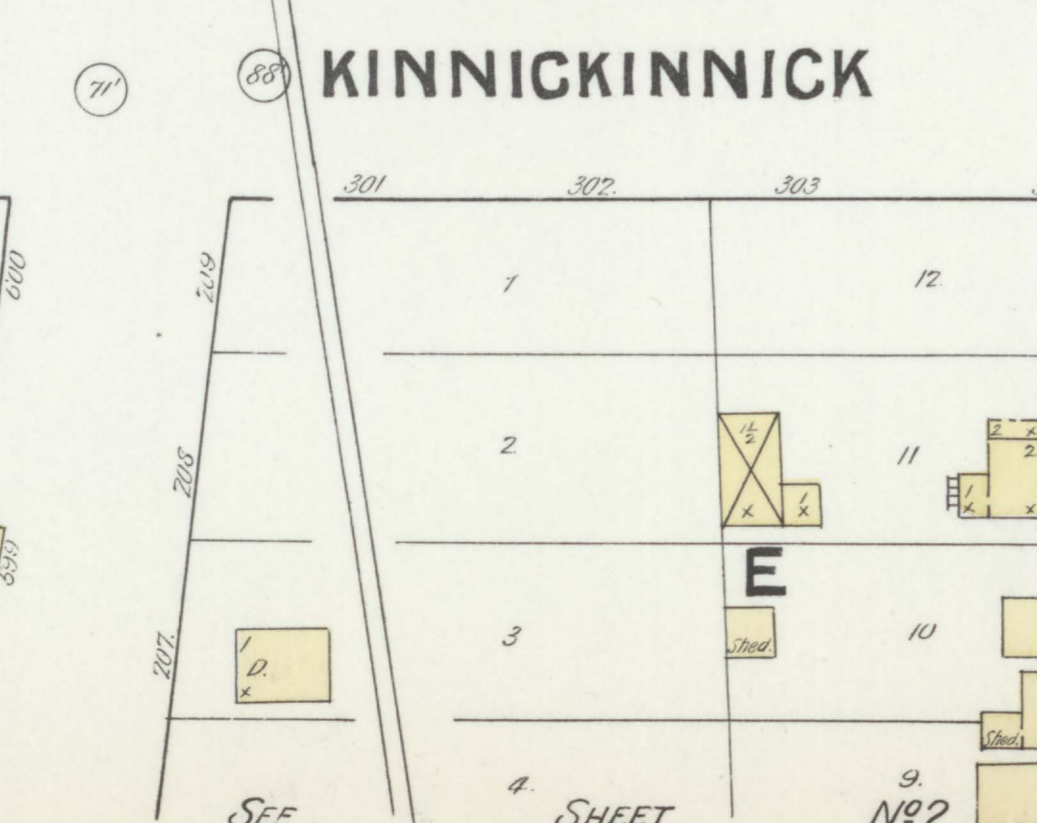
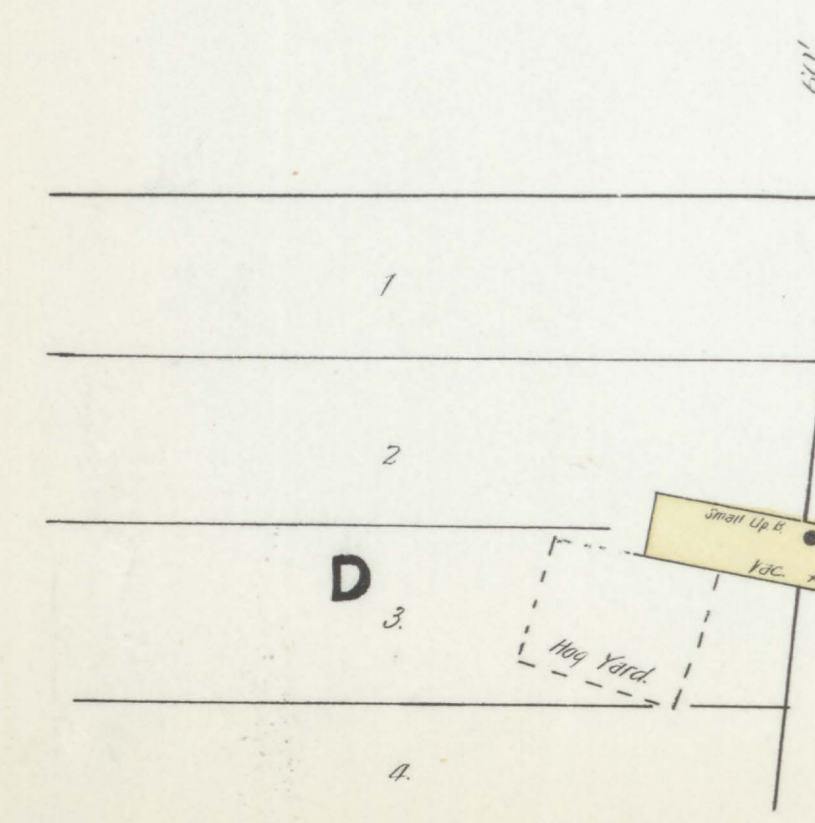
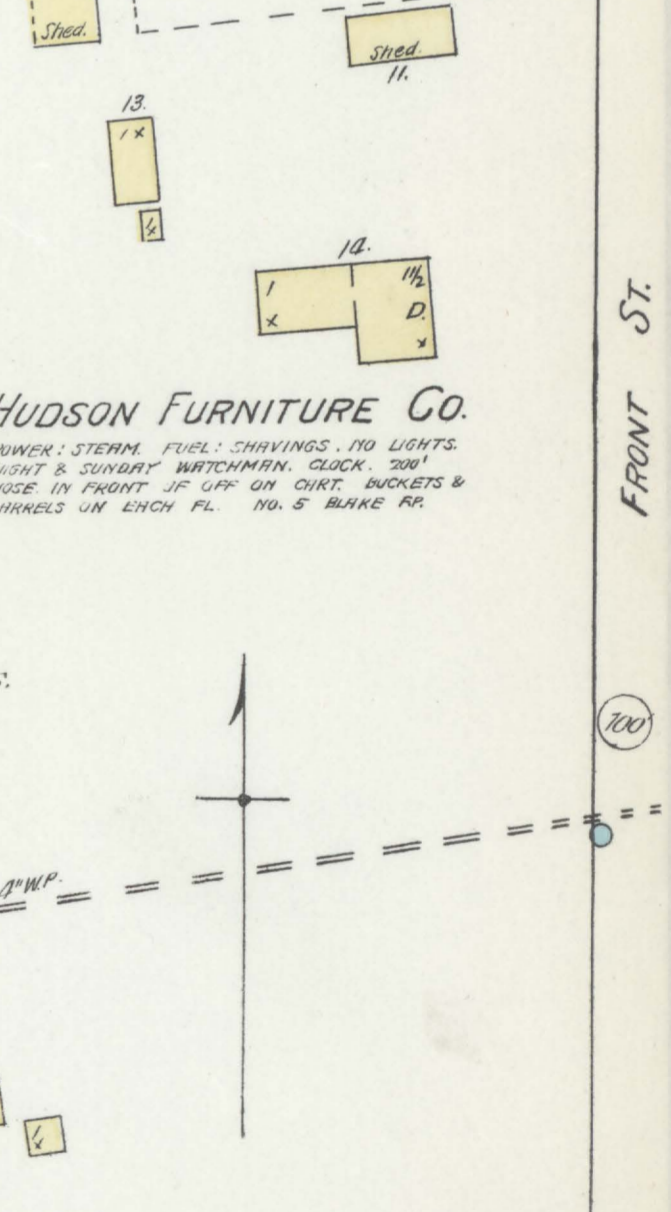
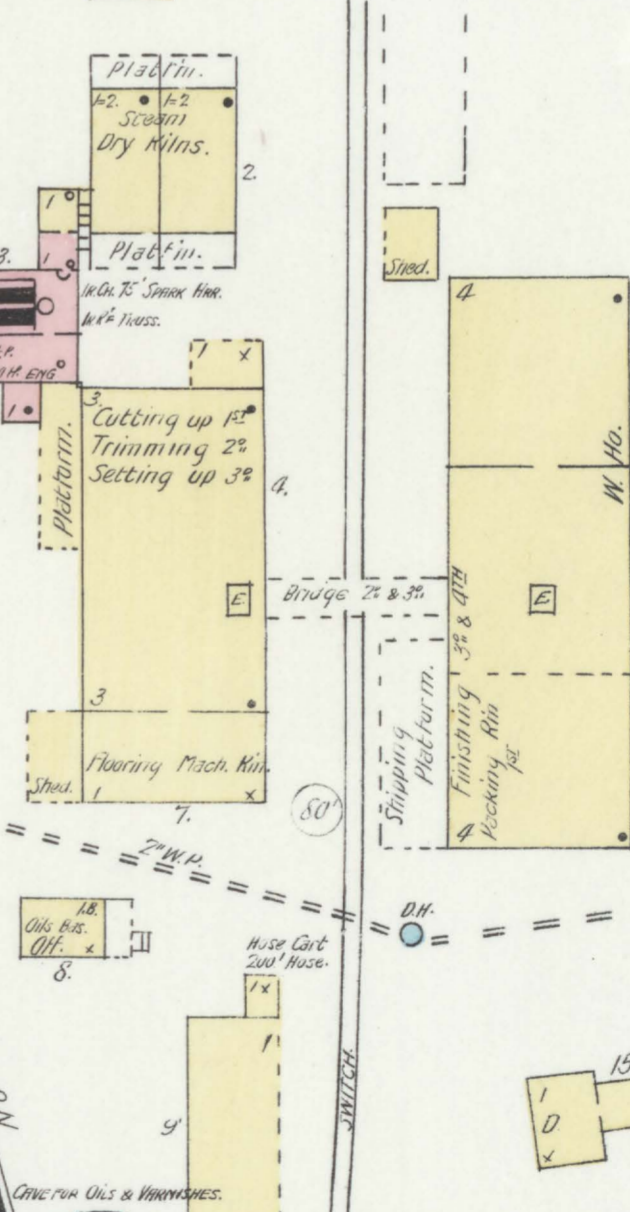
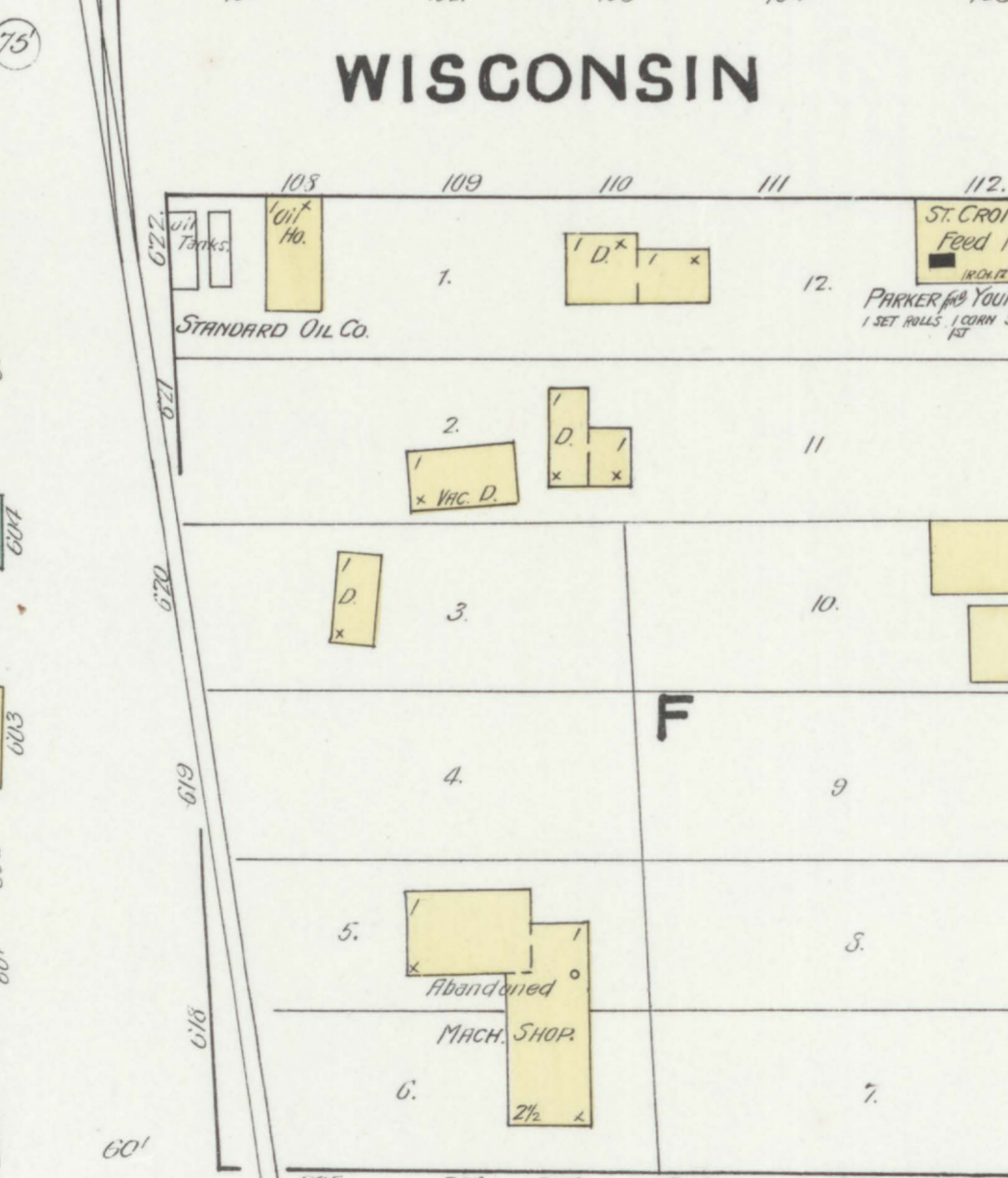
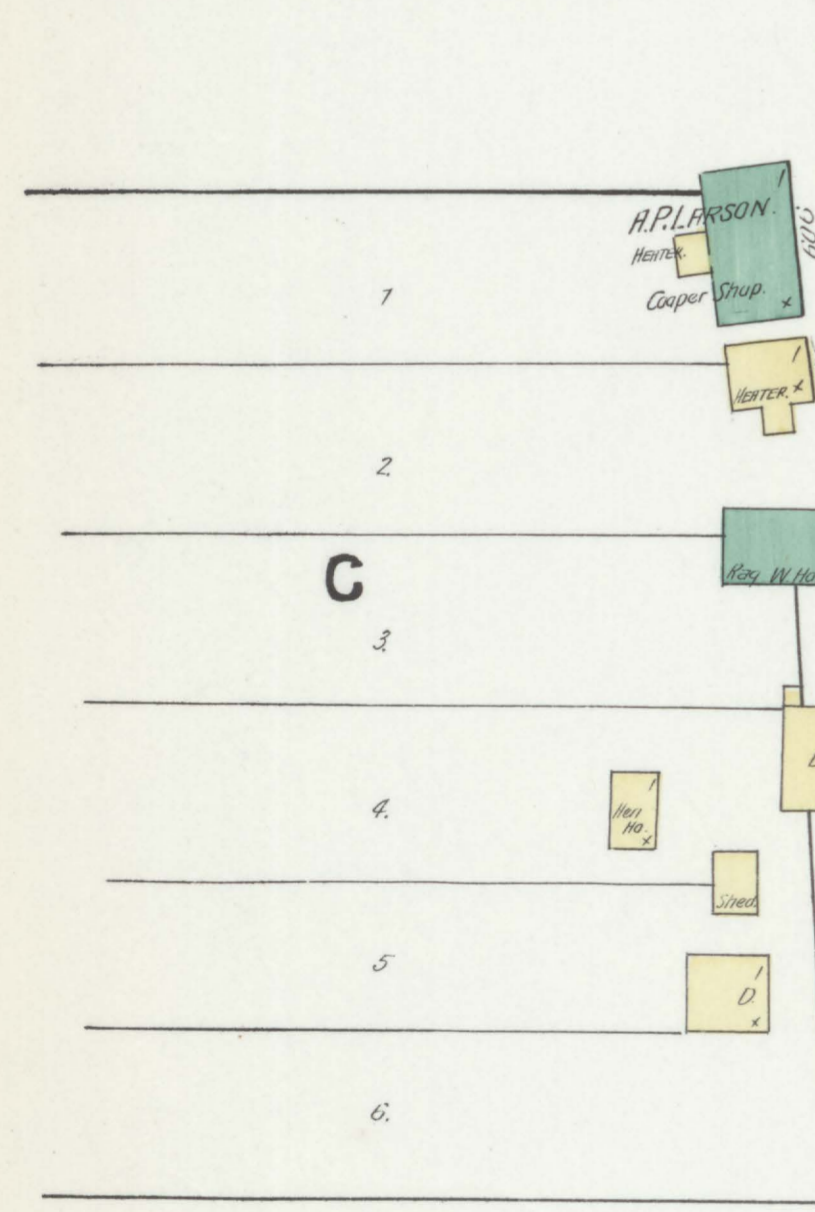
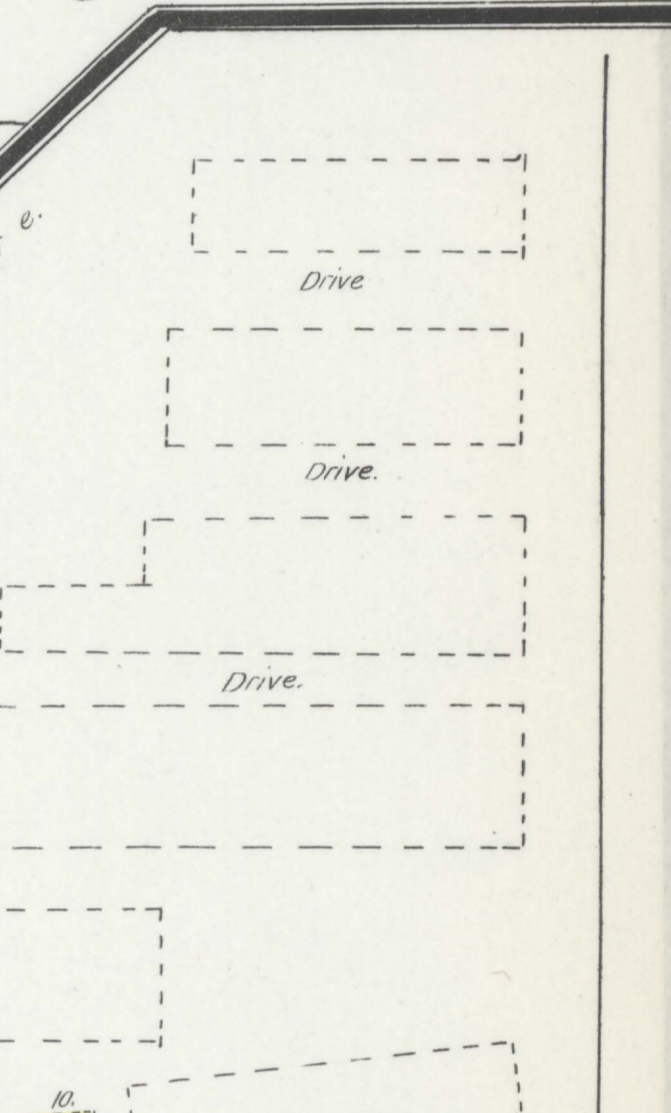
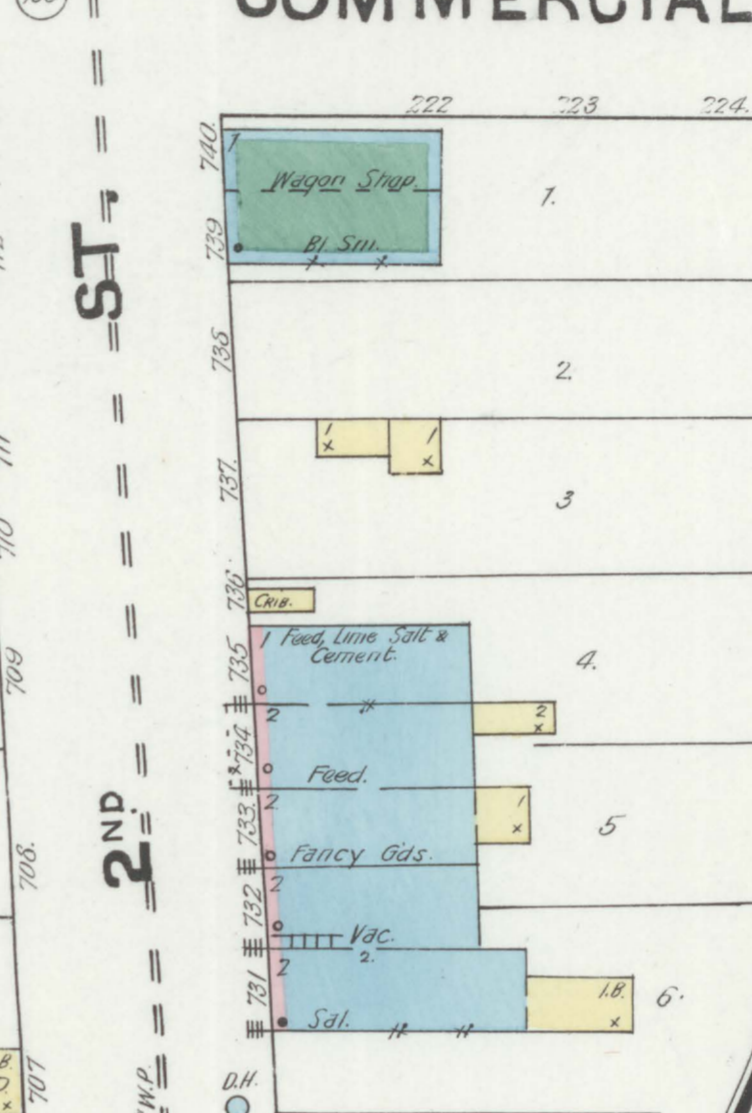
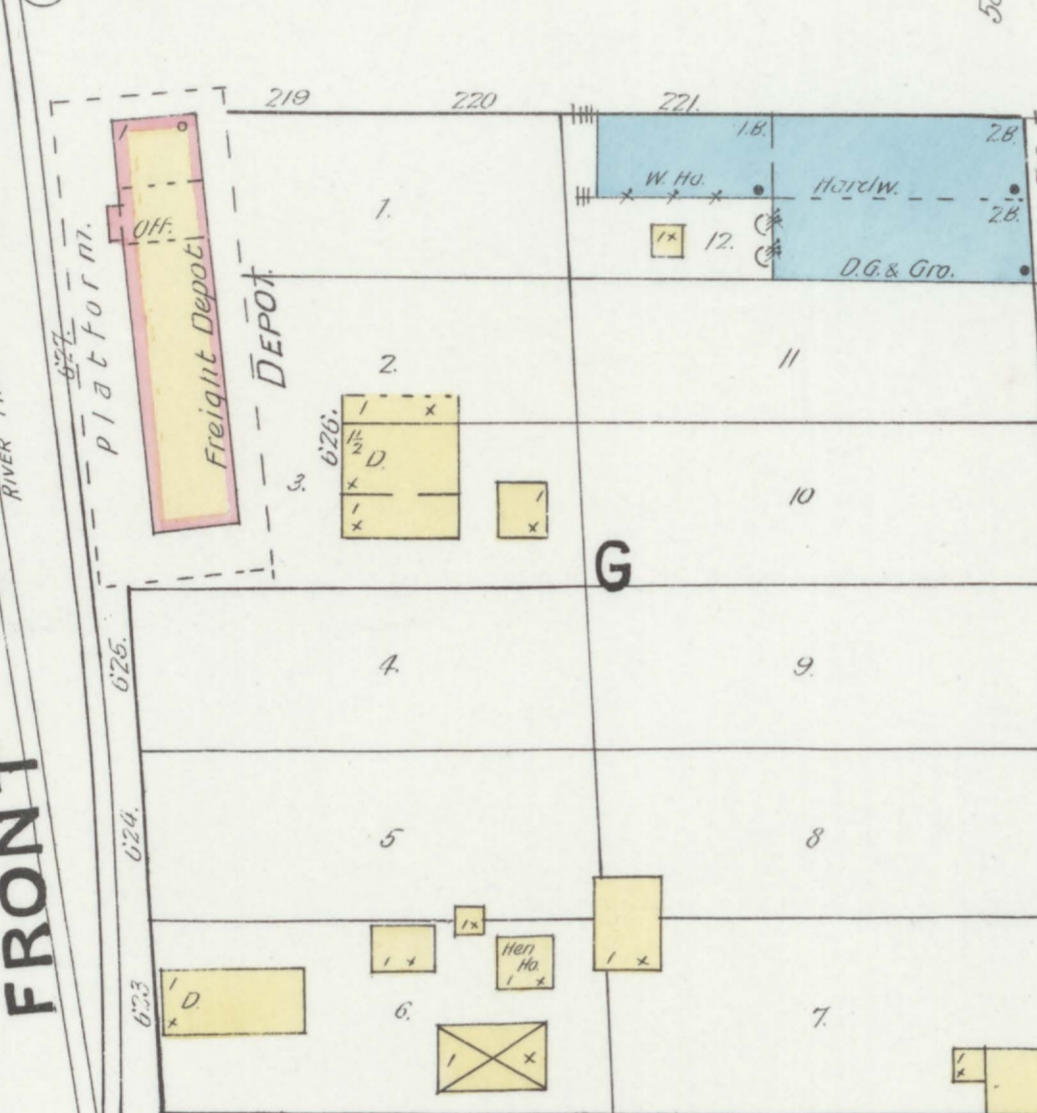
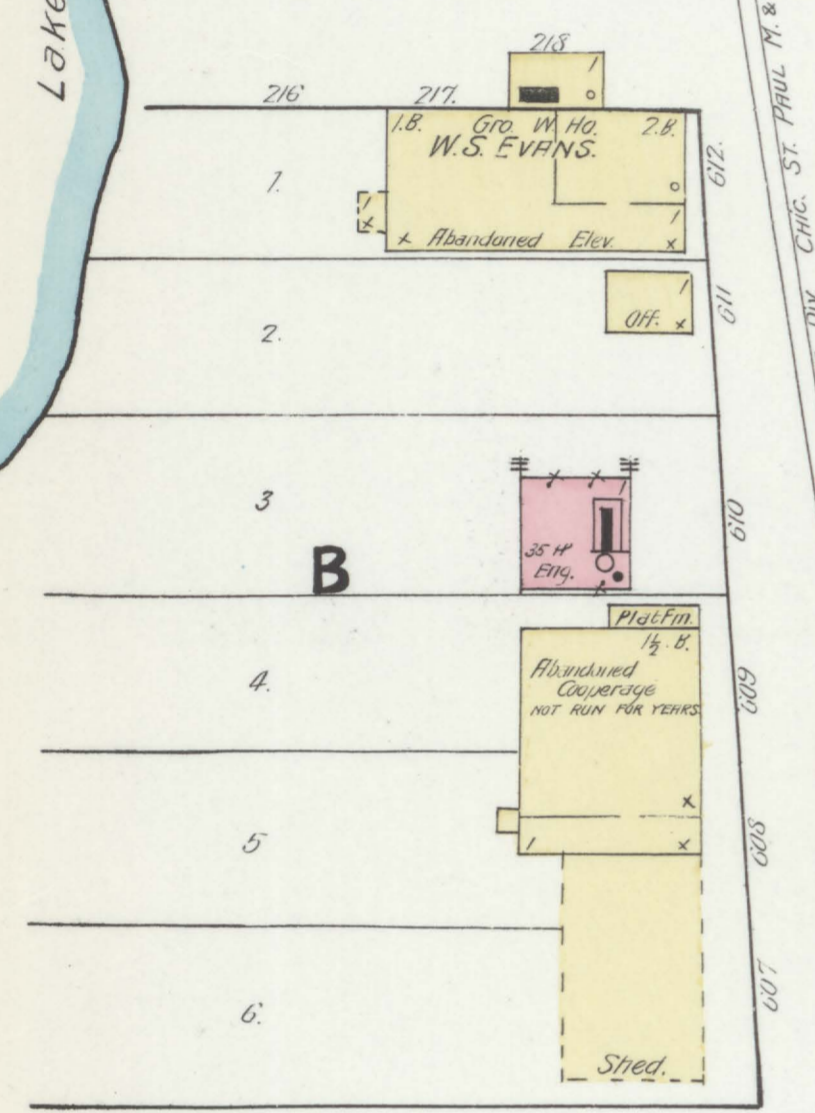
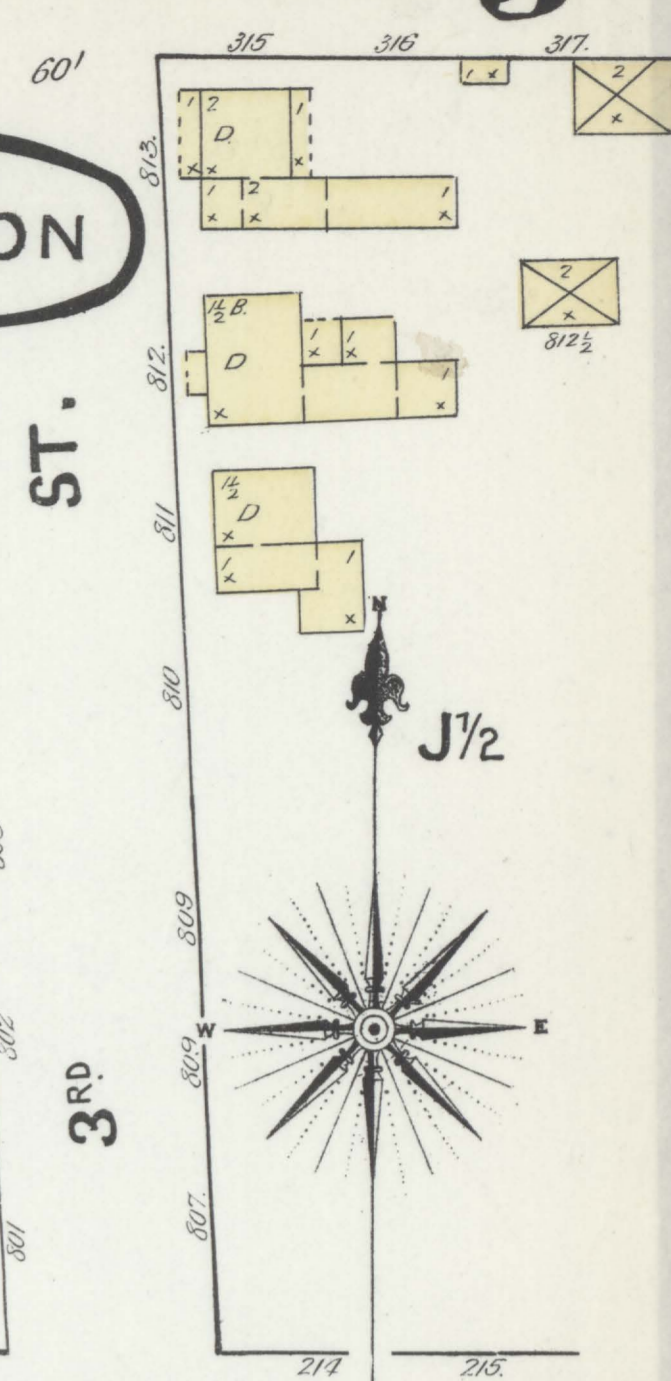
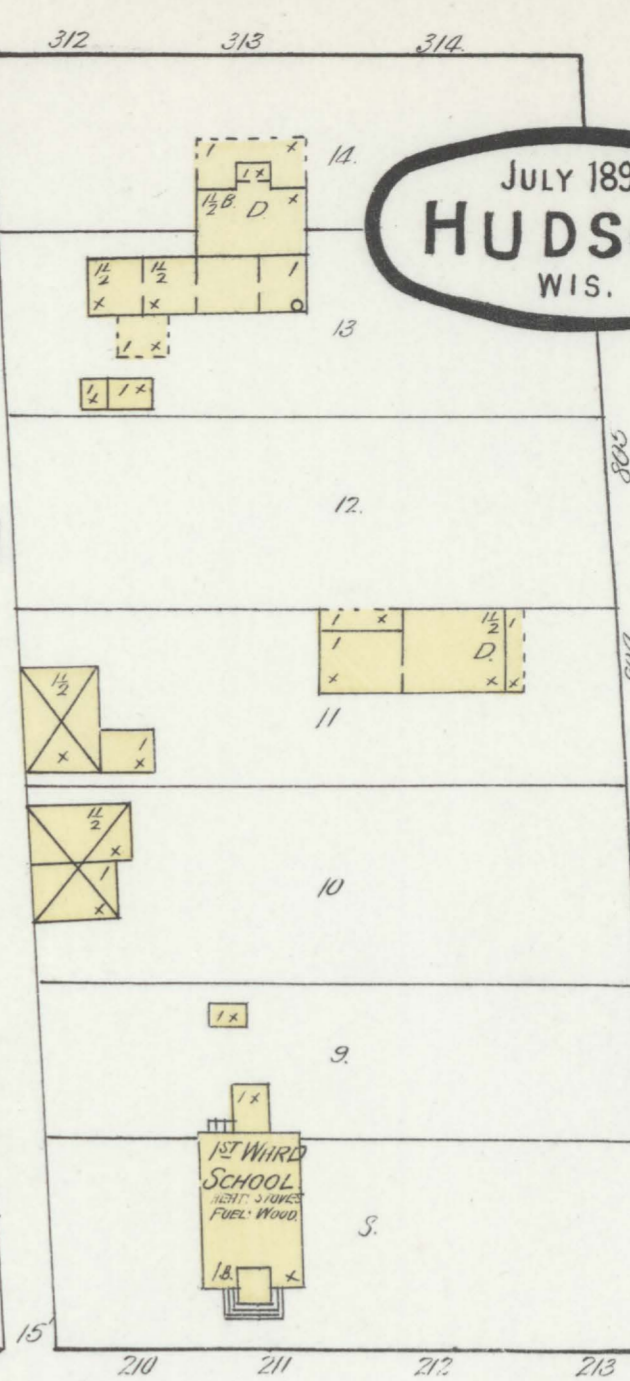
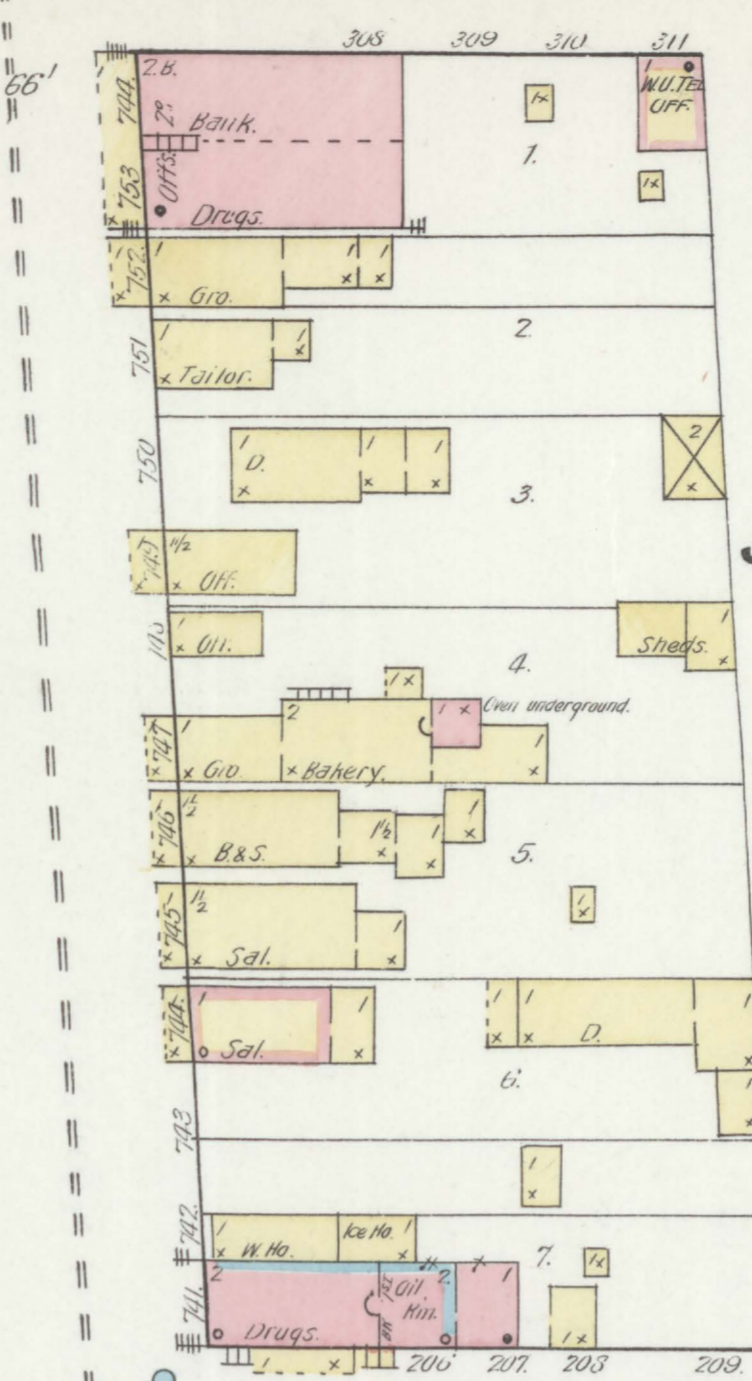
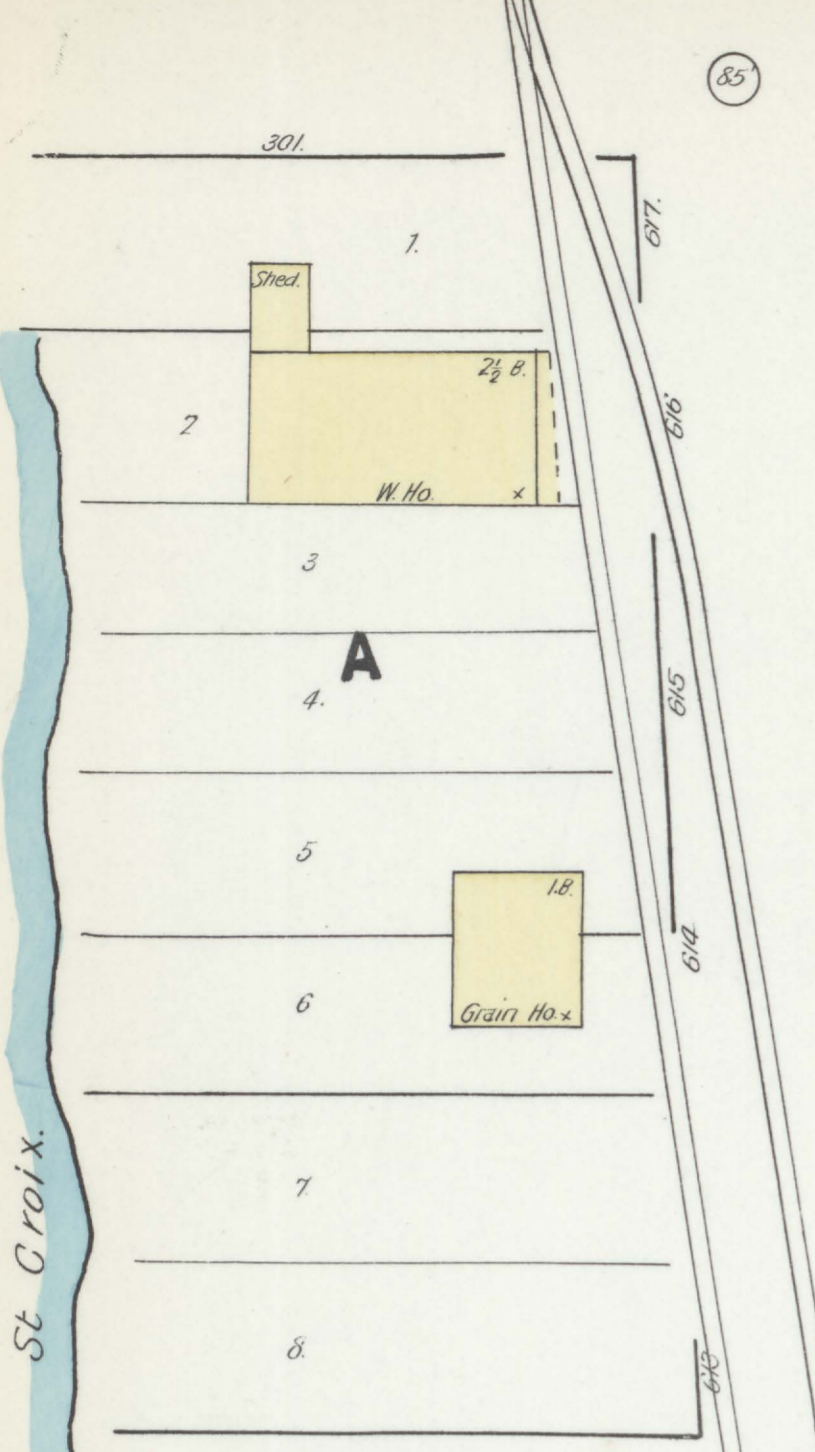
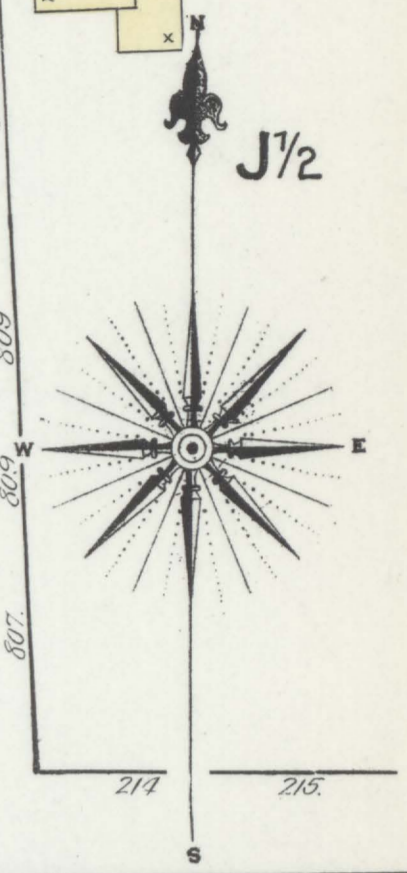


No exposures
City Hydrant 800'

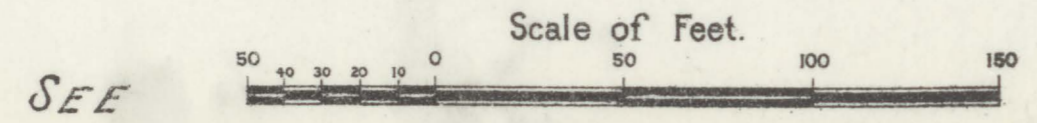
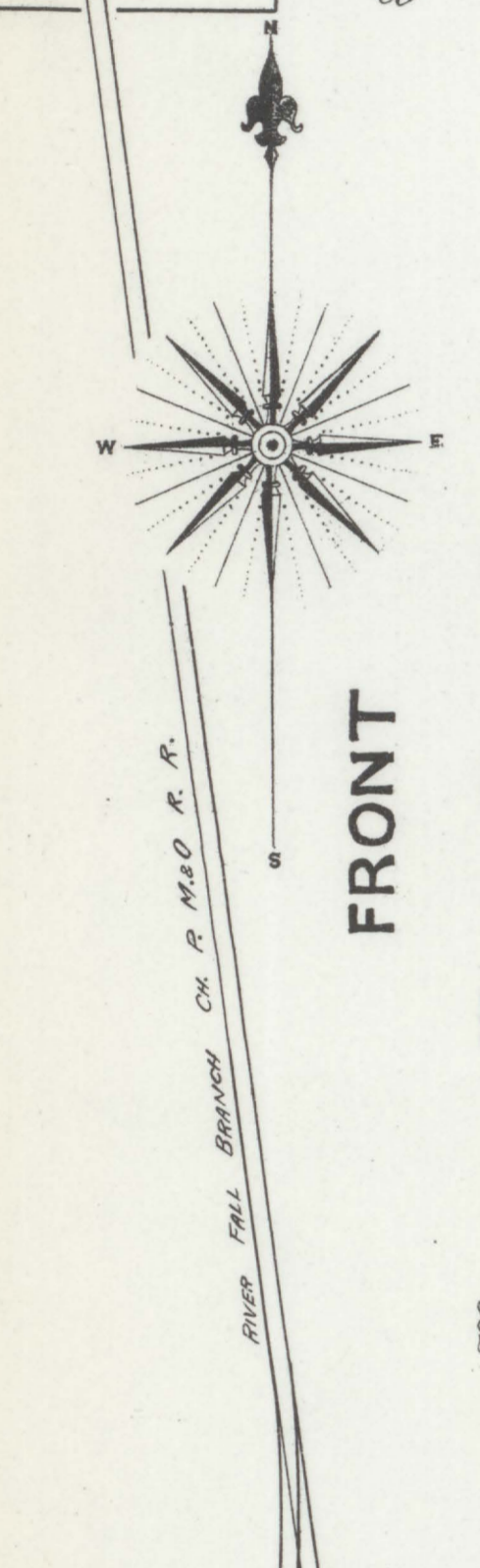
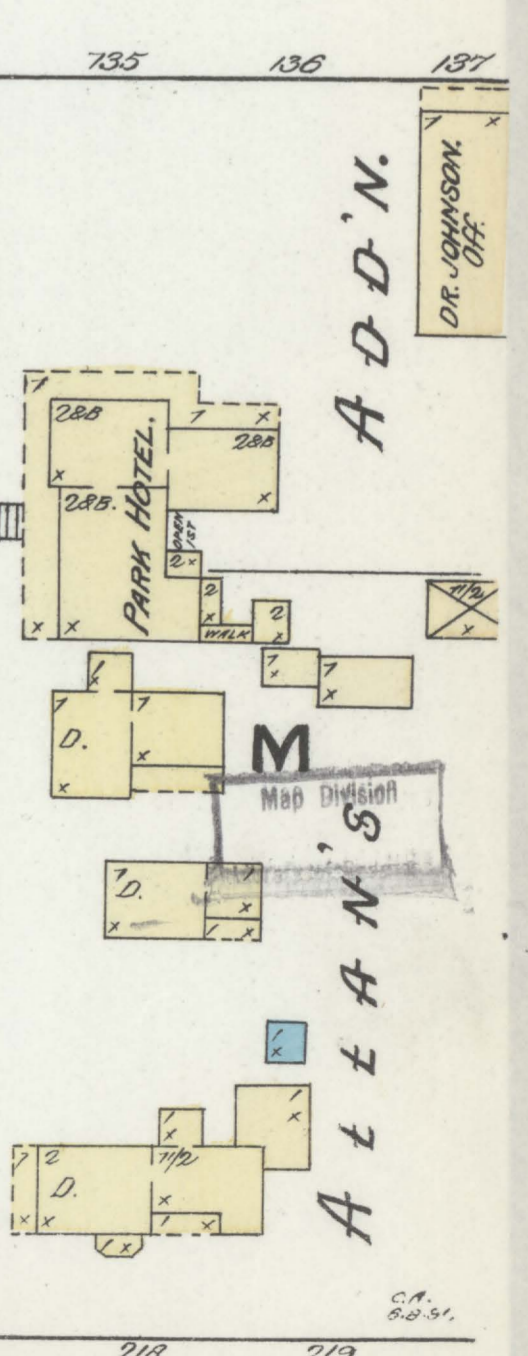
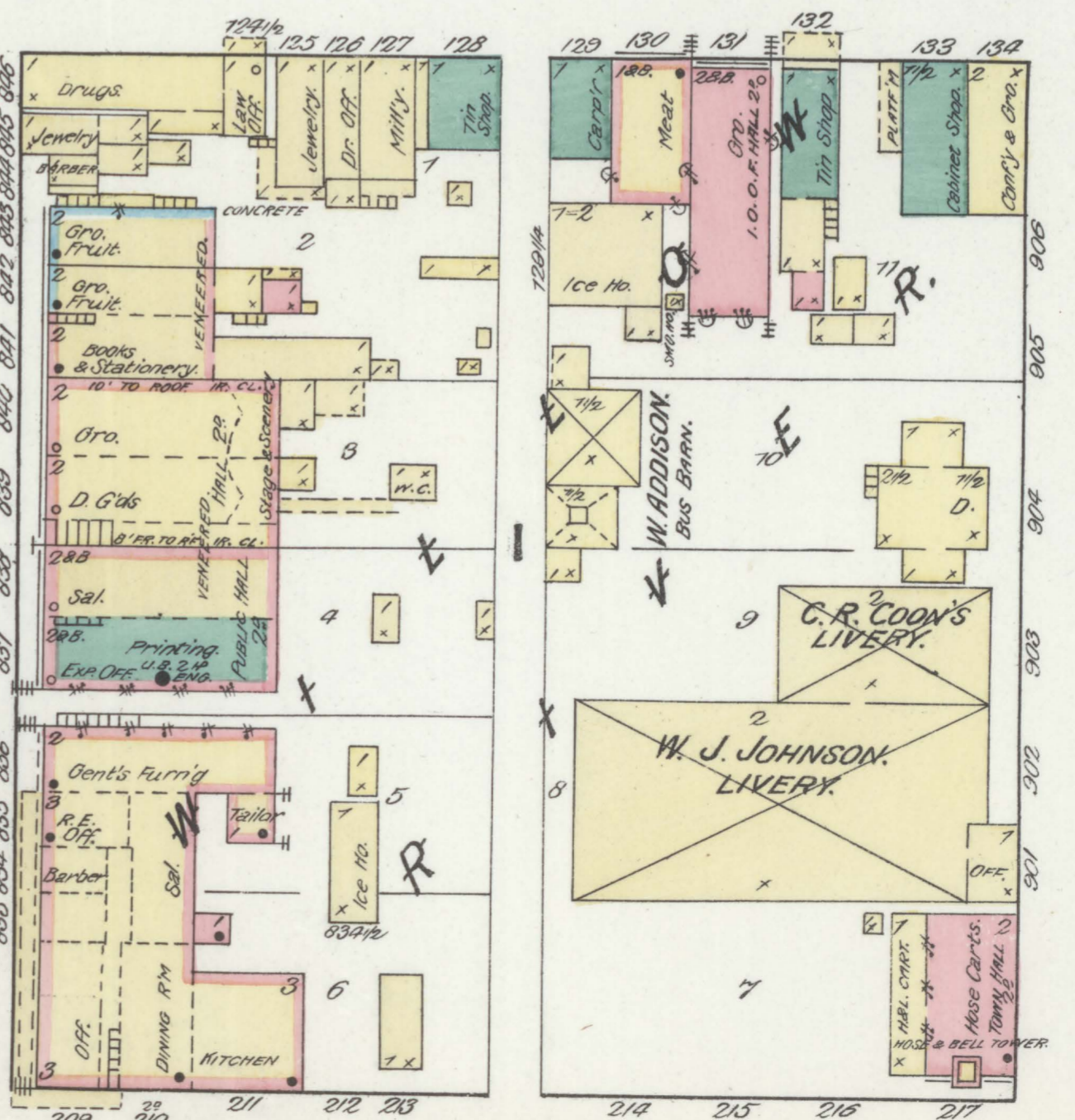
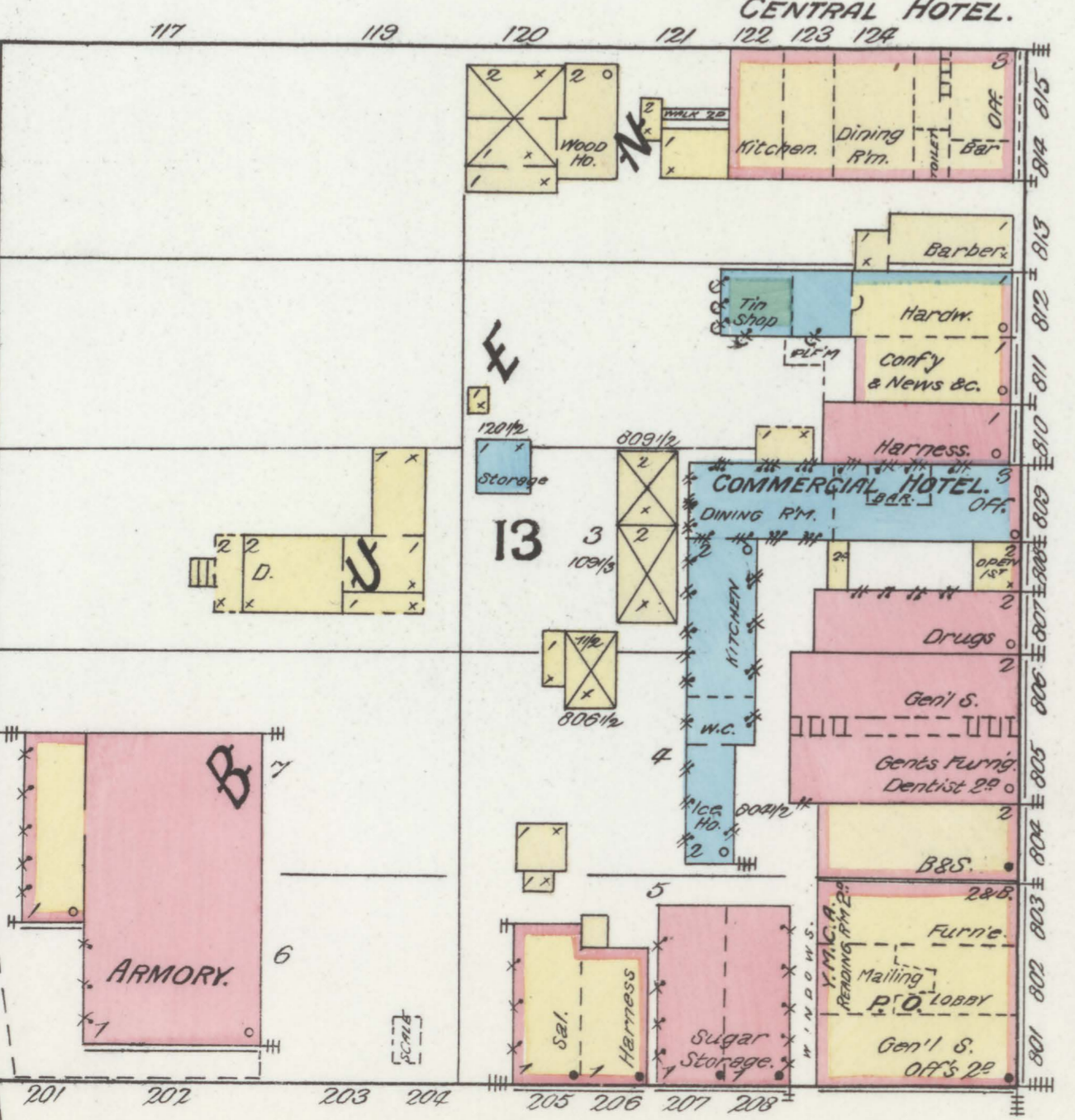
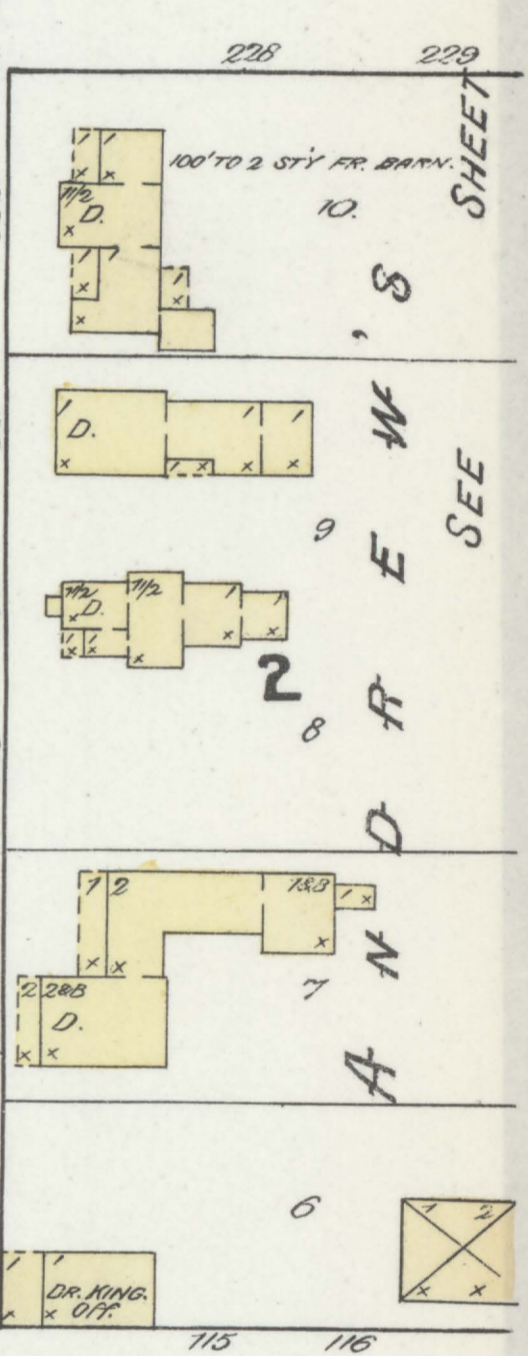
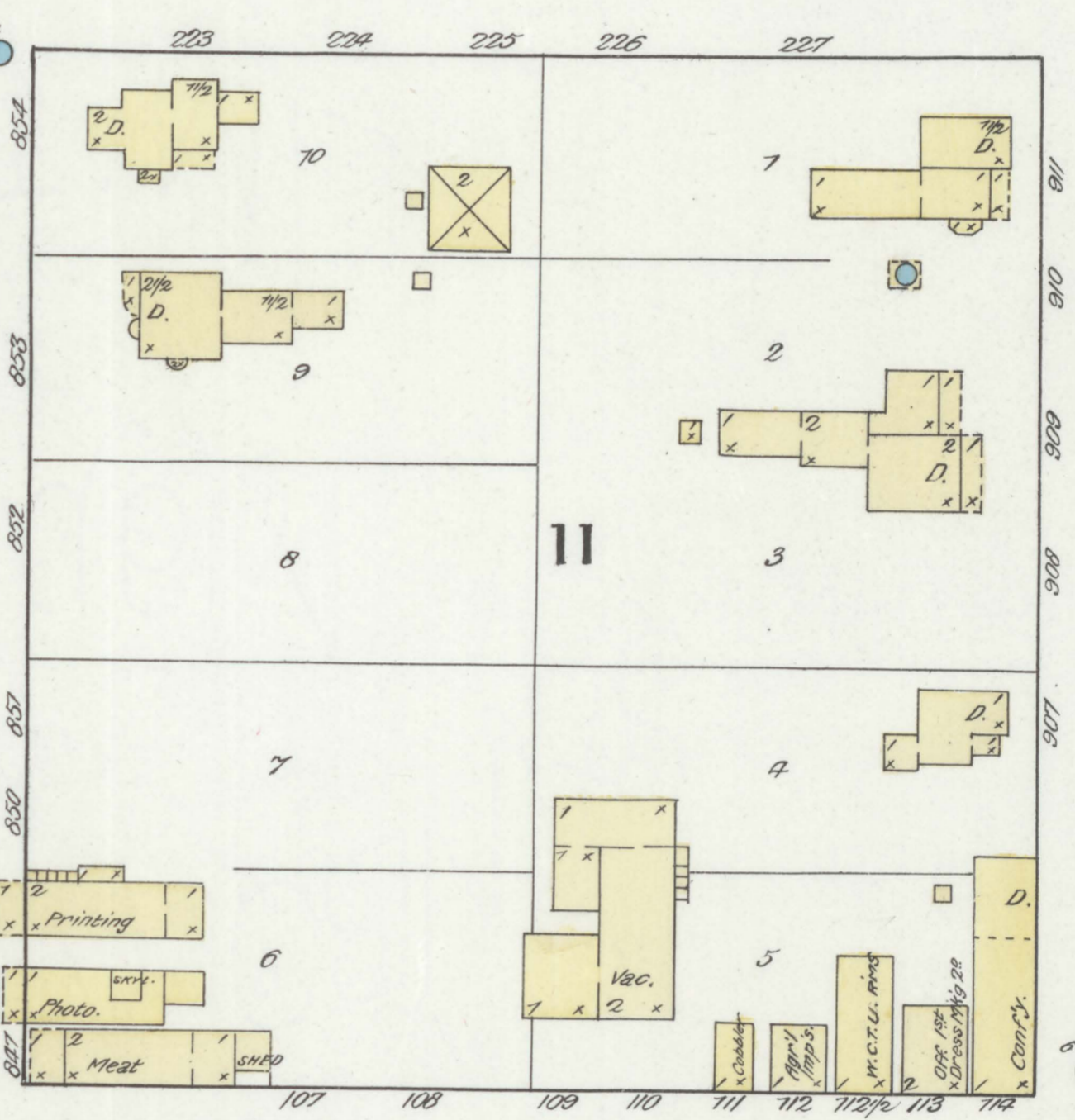
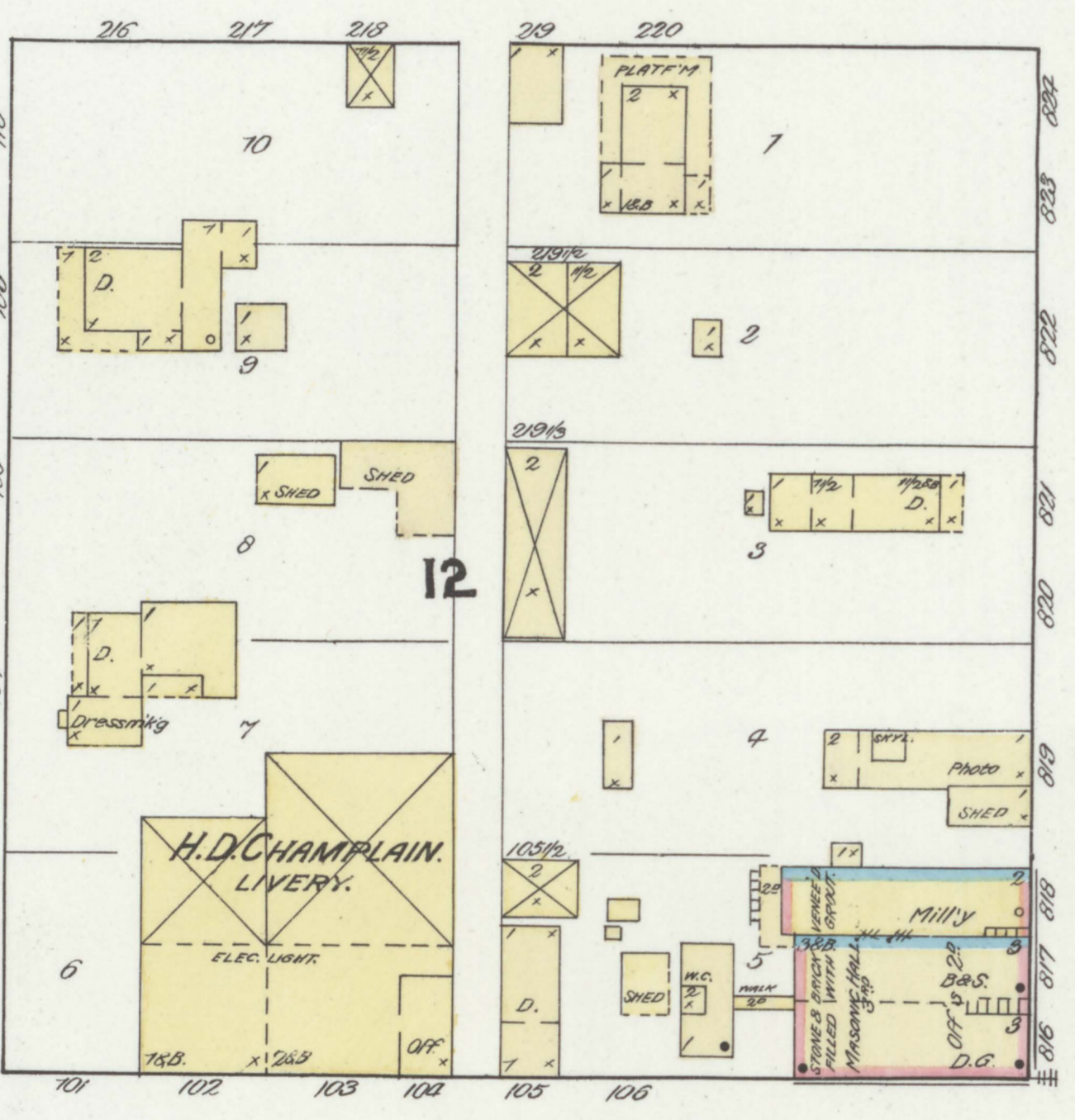
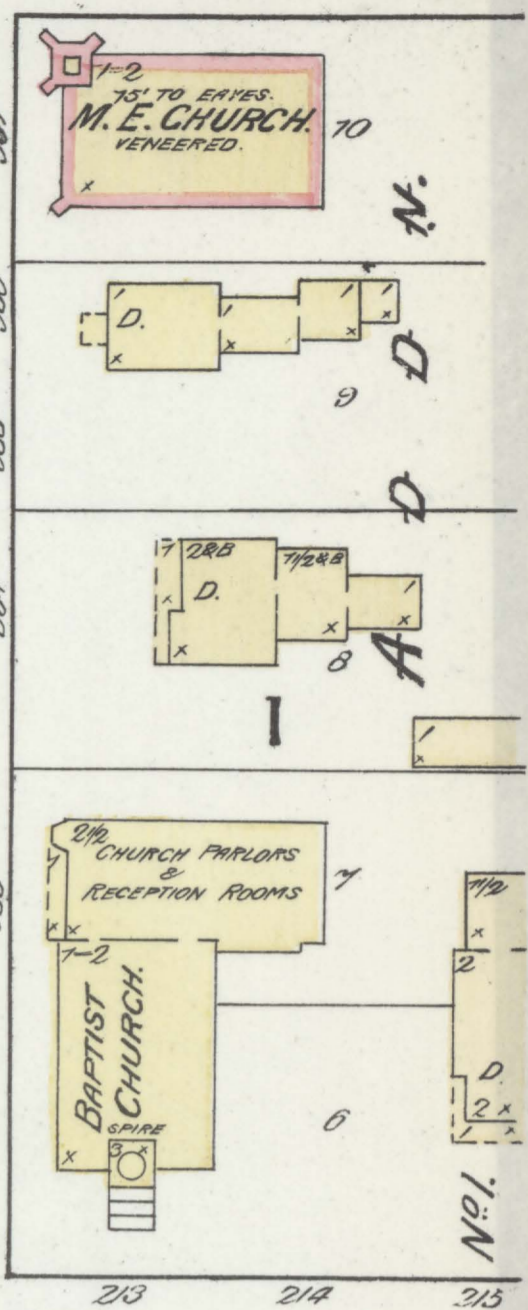
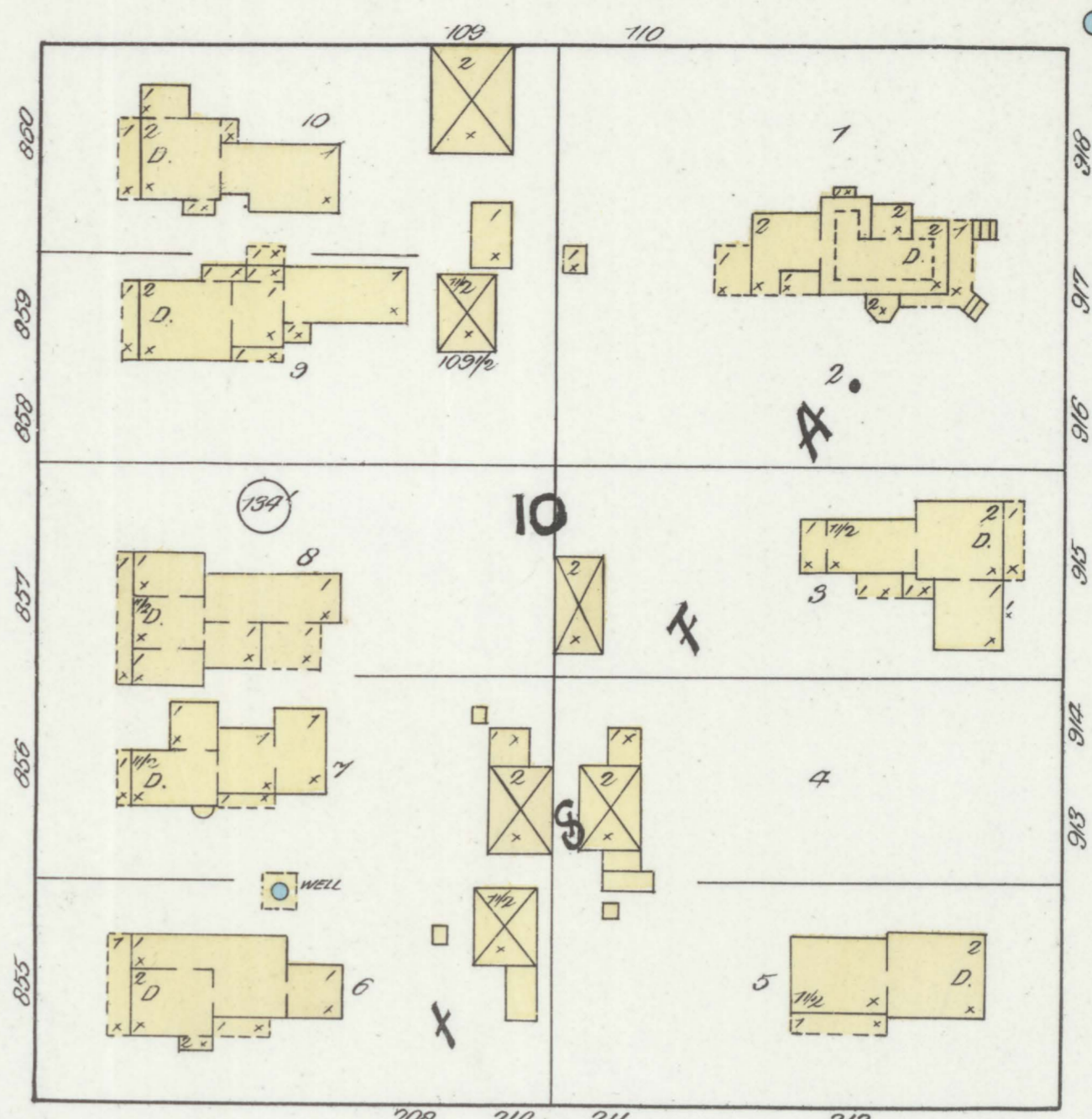
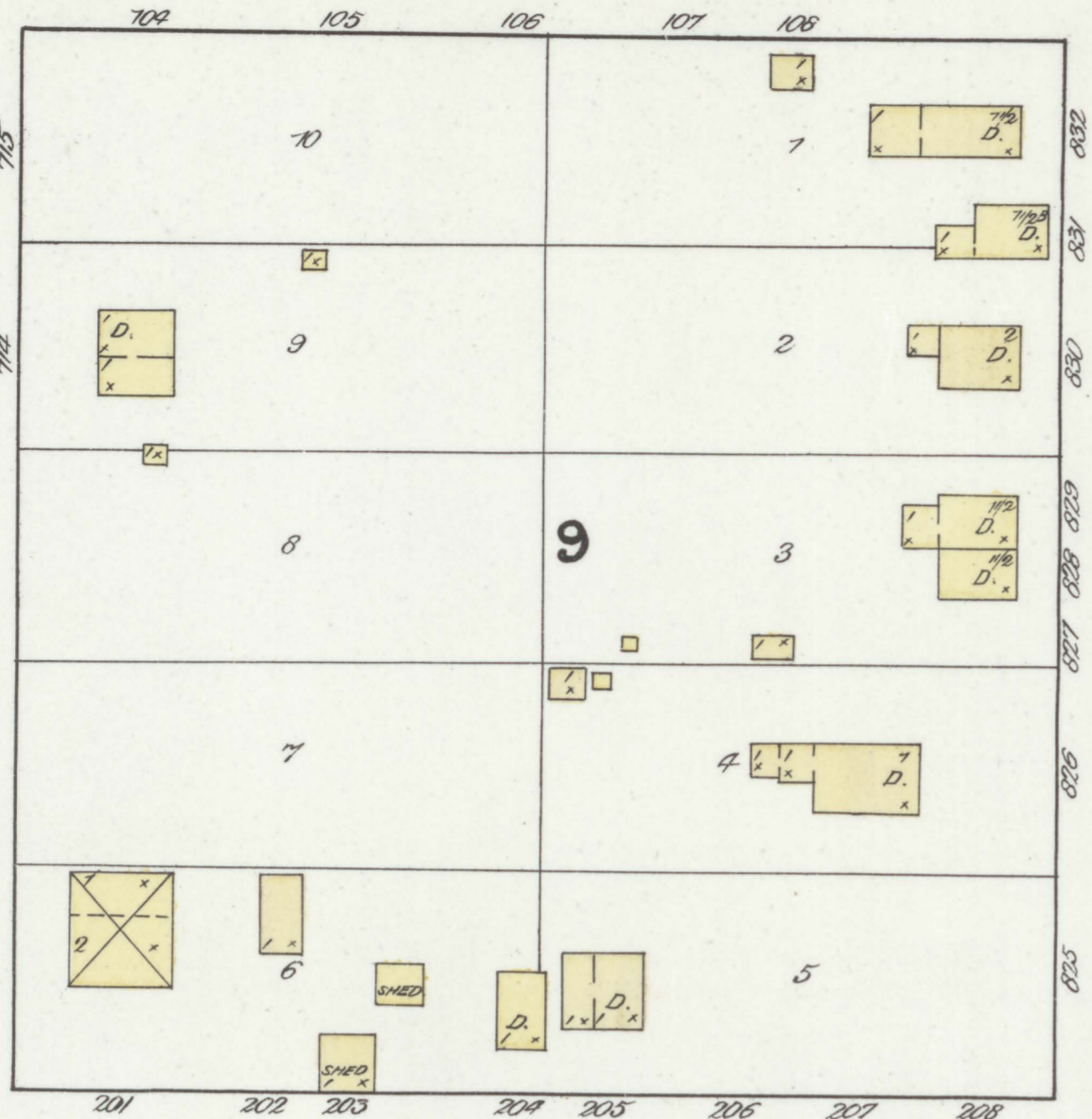
Scale of Feet. 0 50 100 150

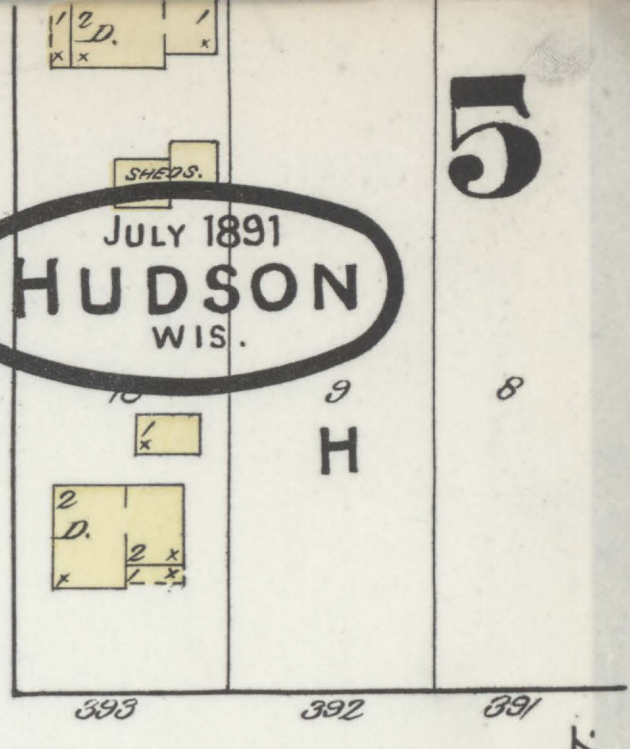
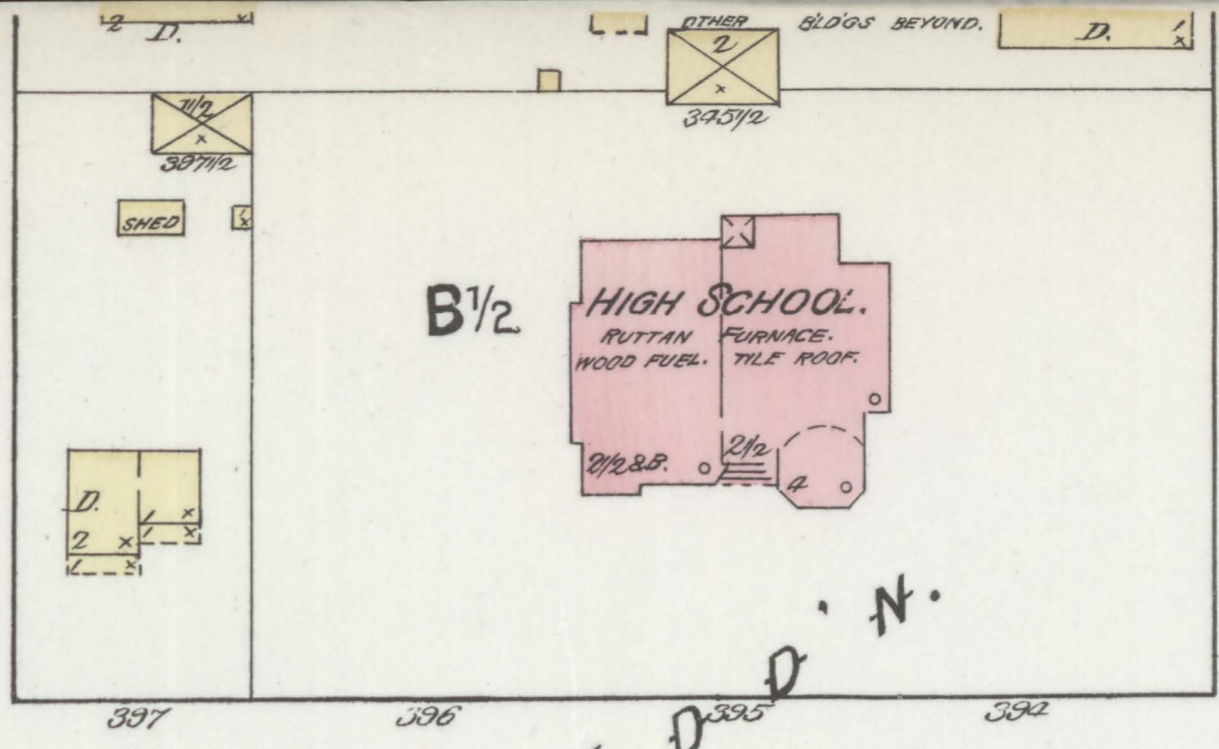
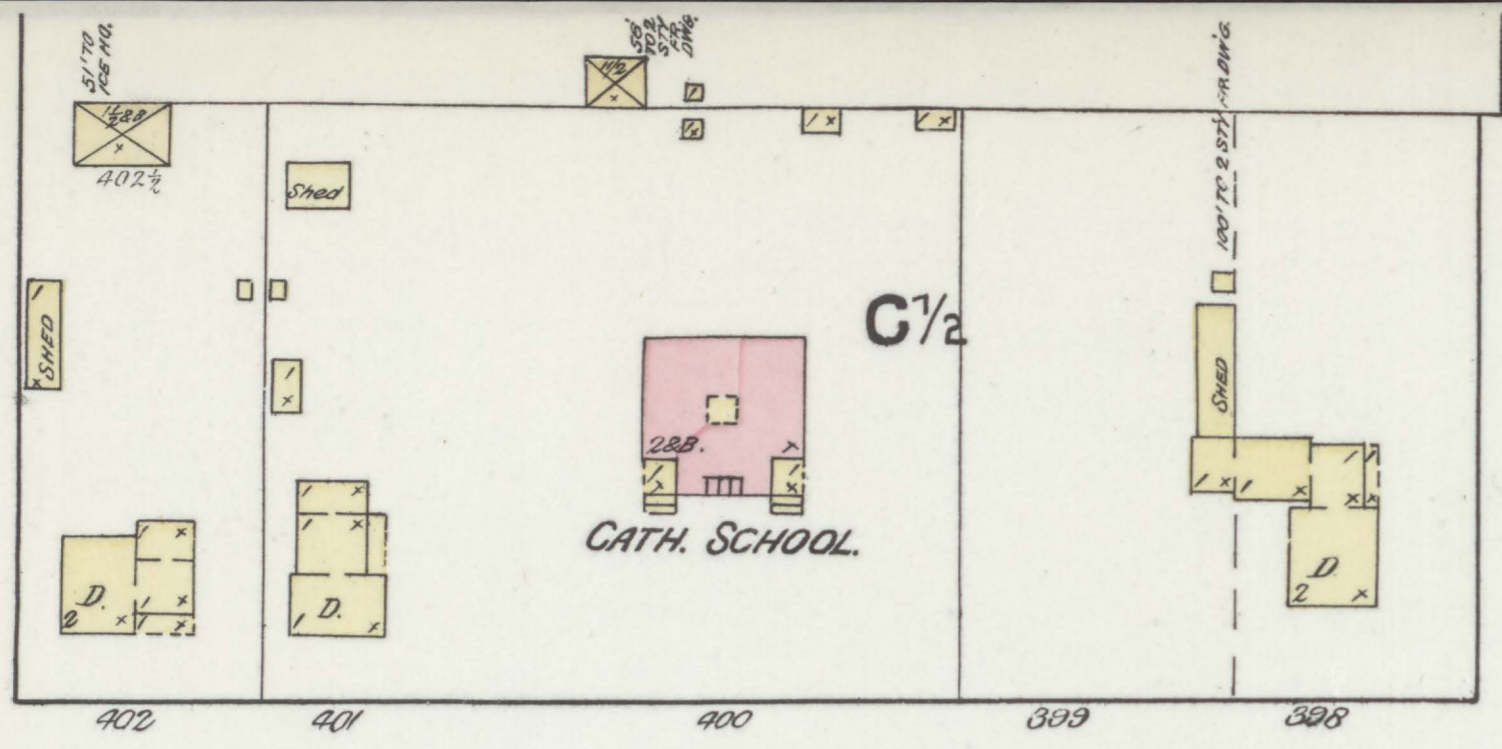
JULY 1891
HUDSON
WIS.

ST.
3RD

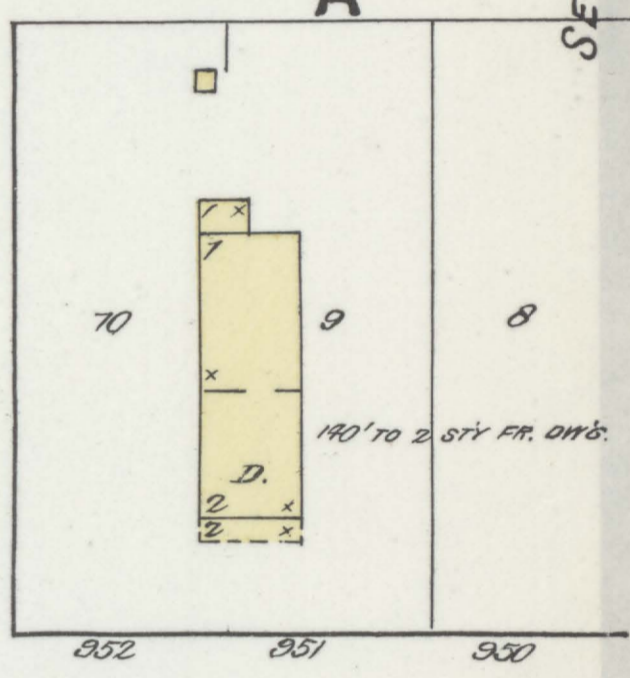
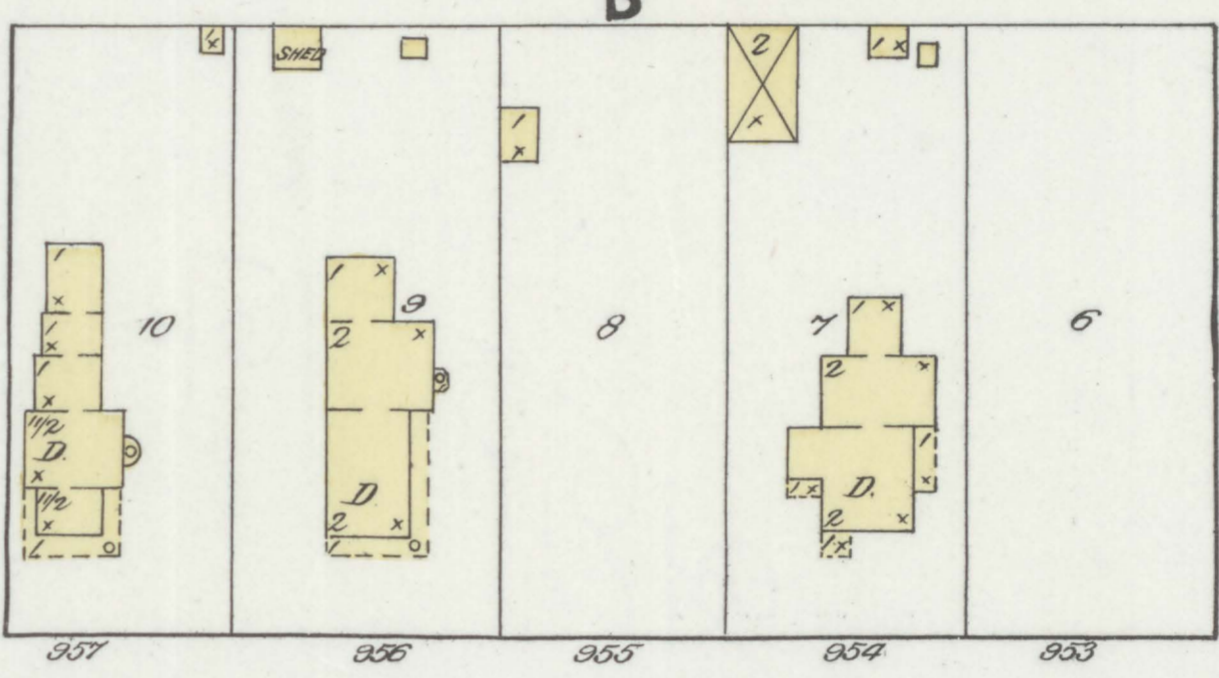
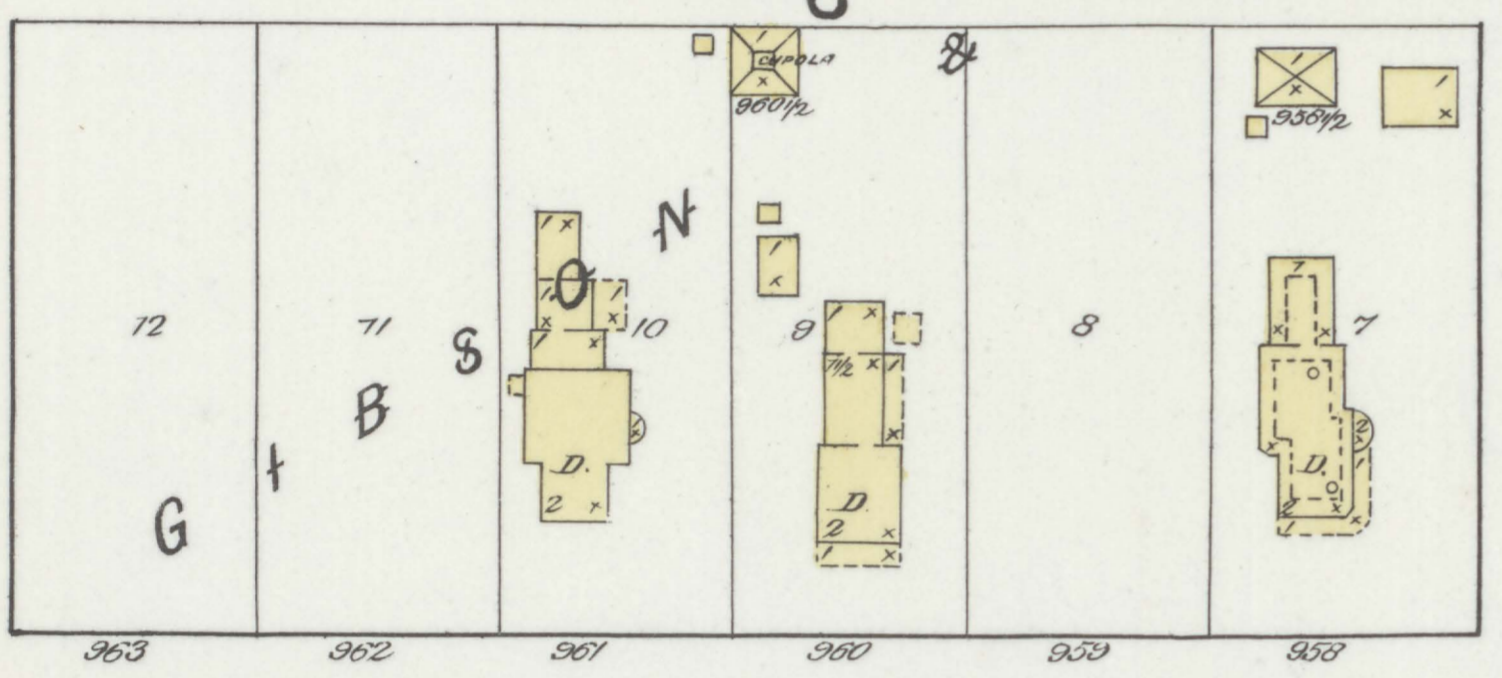
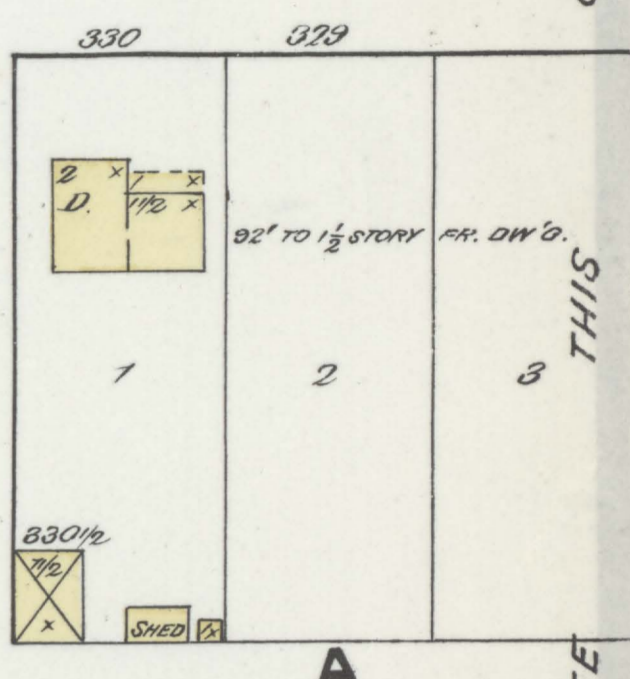
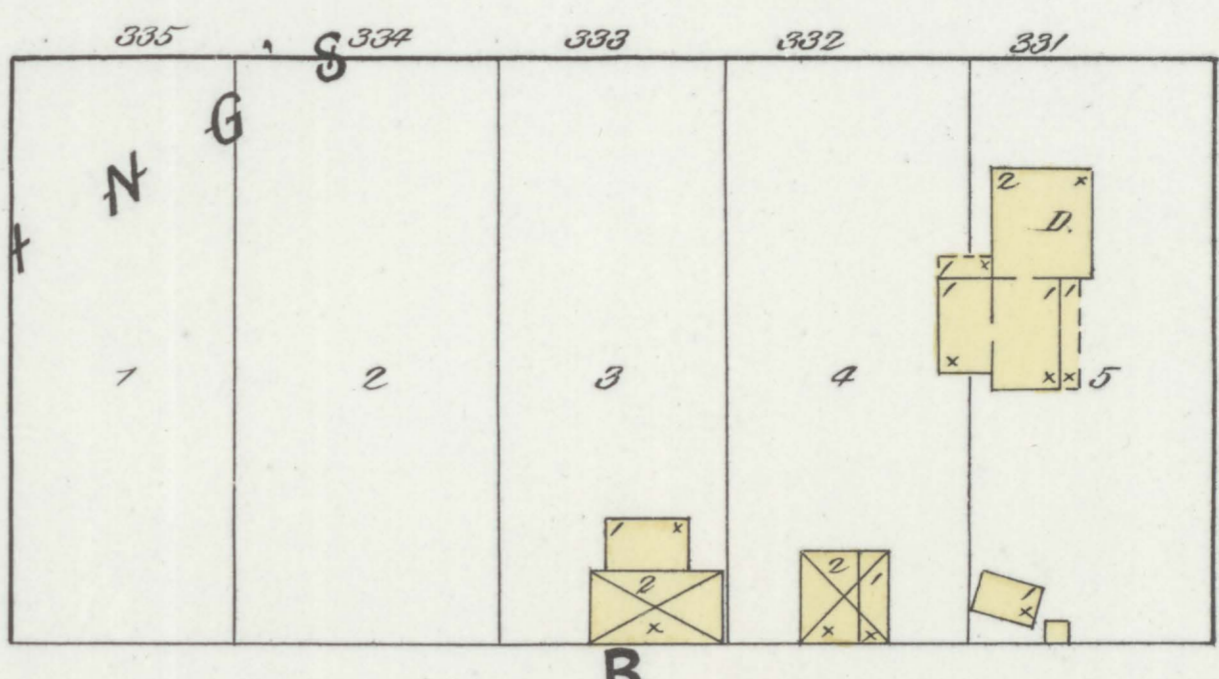
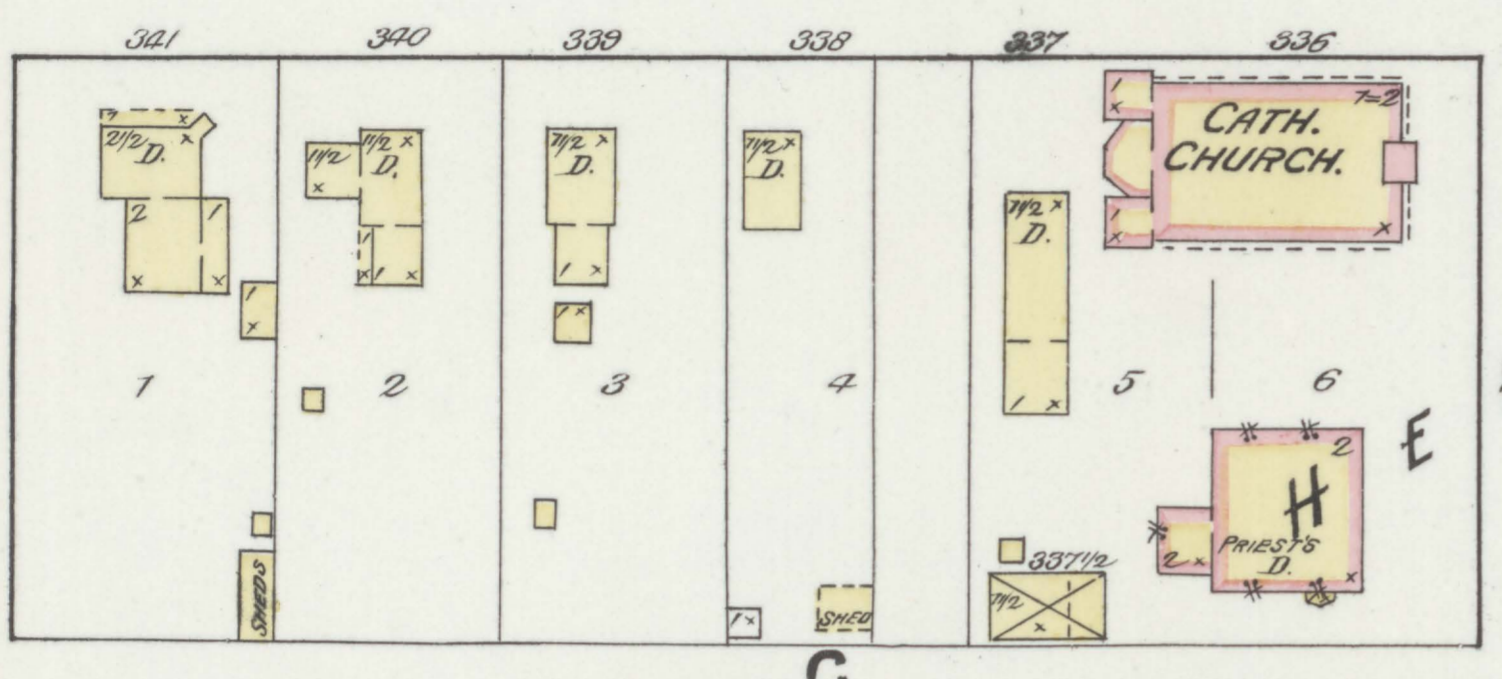


Scale of Feet.

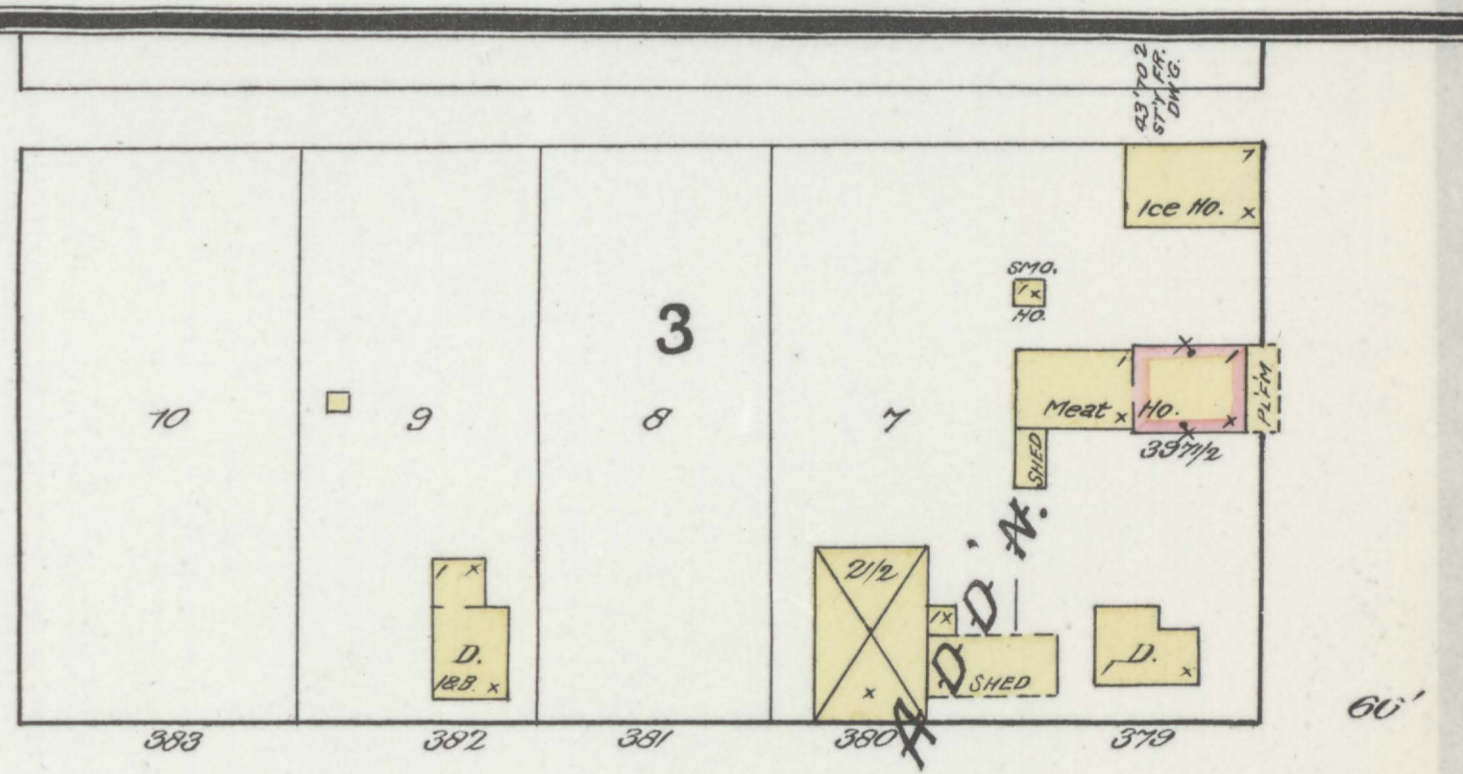
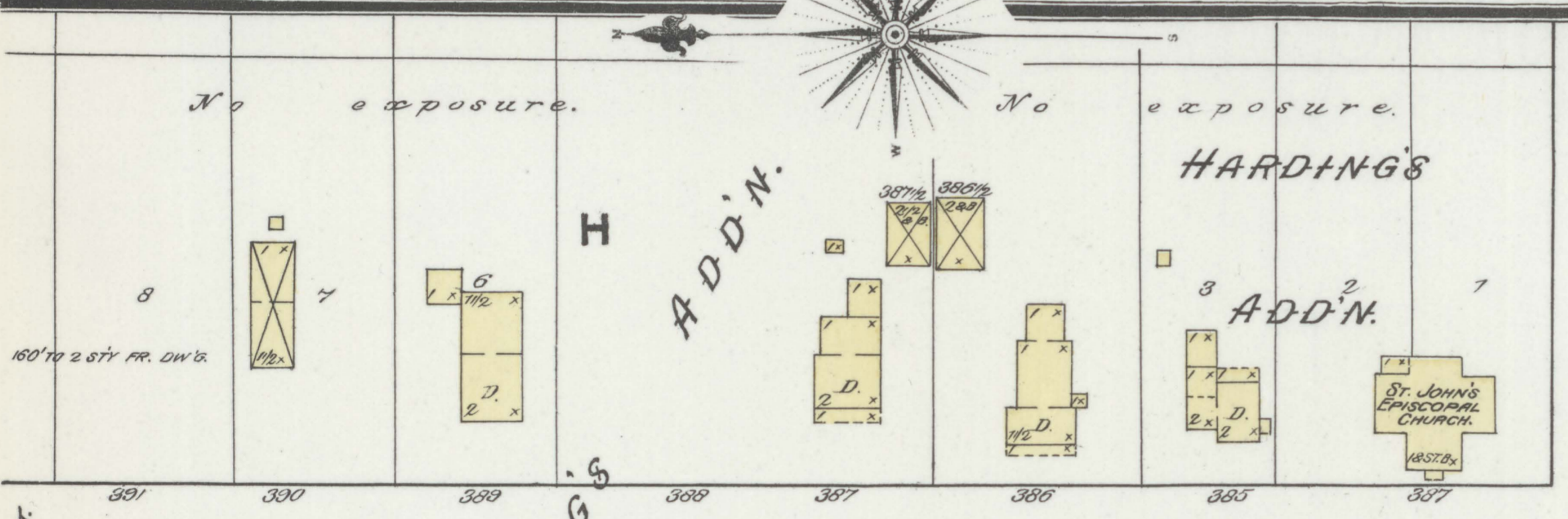
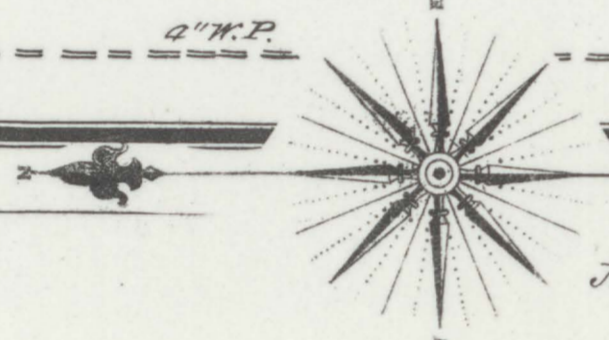




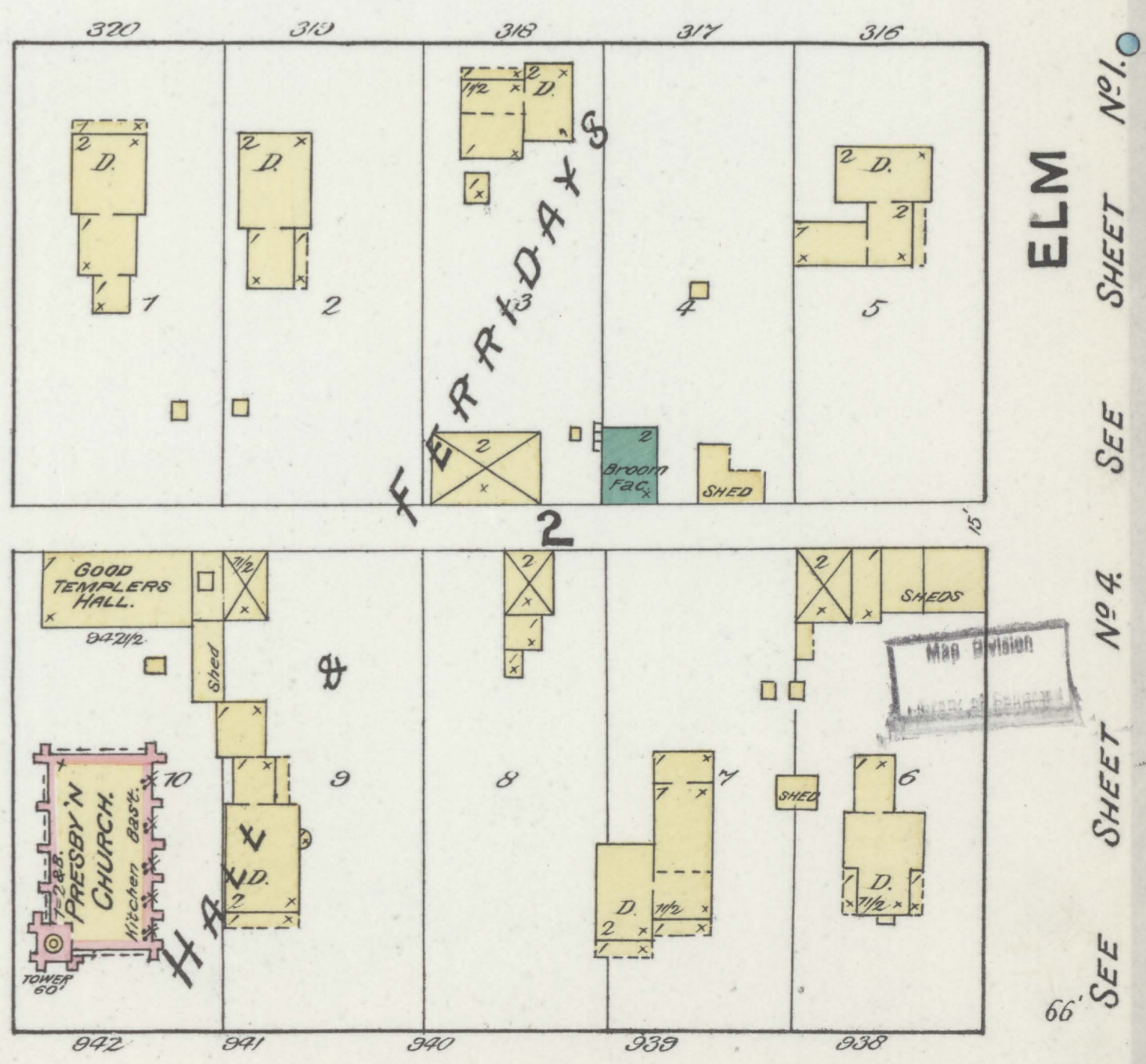
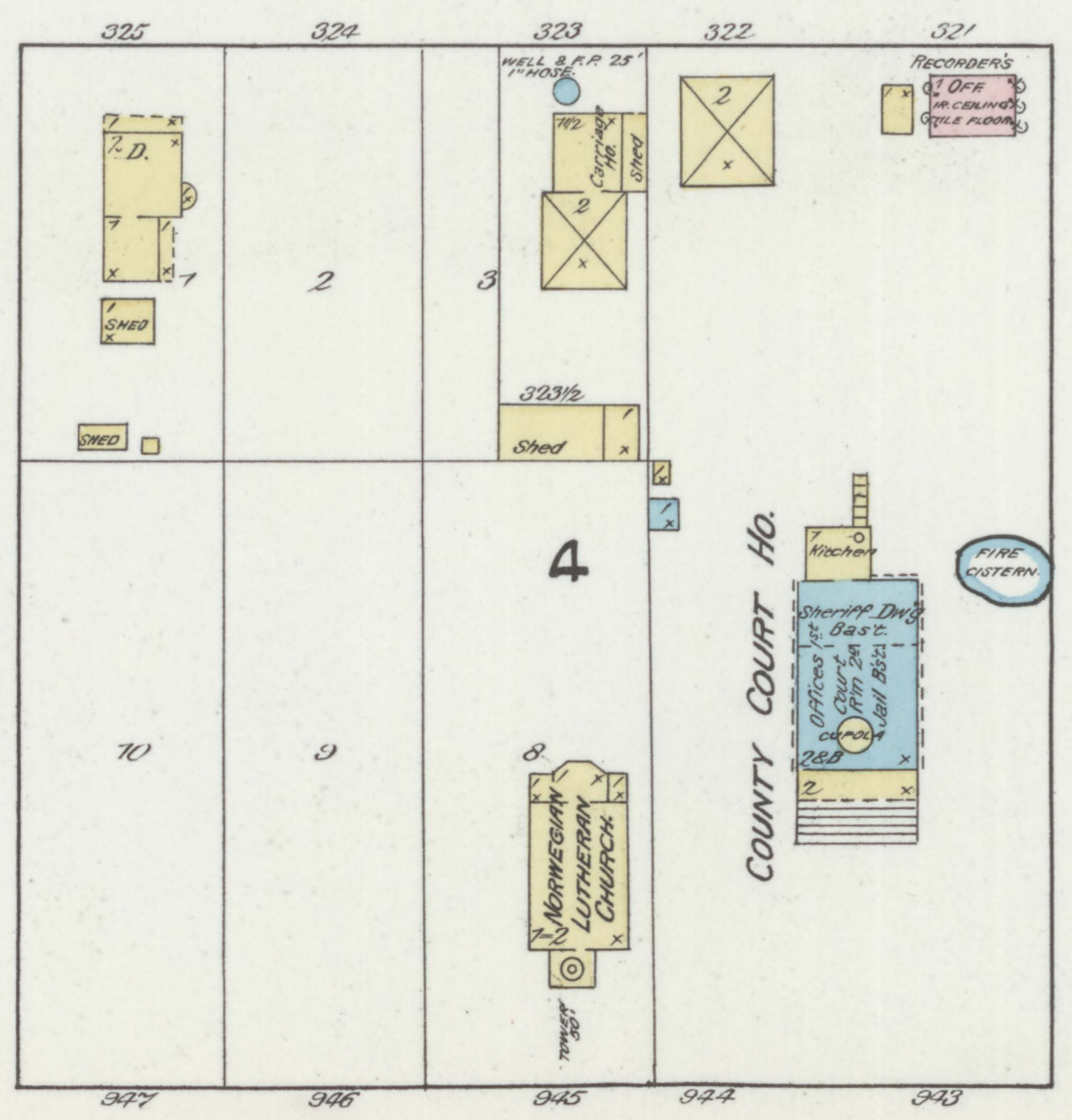
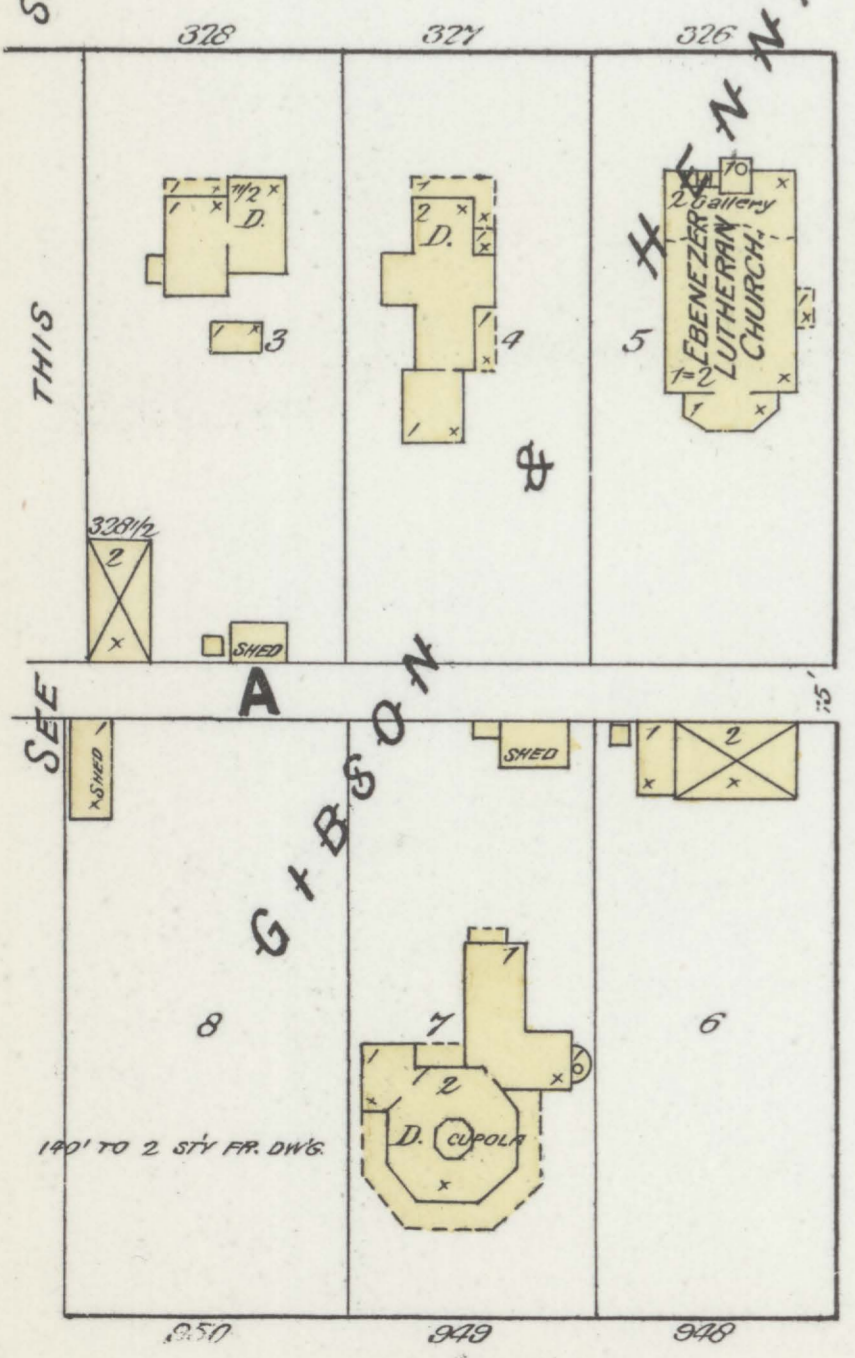
4TH ST.



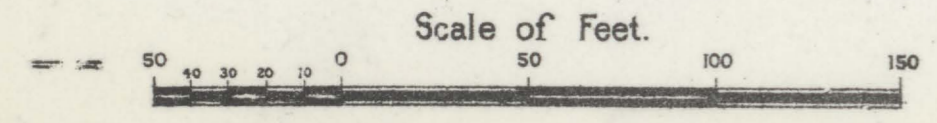
3RD ST.



4TH ST.



3RD ST.



SHEET

THIS

SEE

SEE

SHEET

THIS

SEE

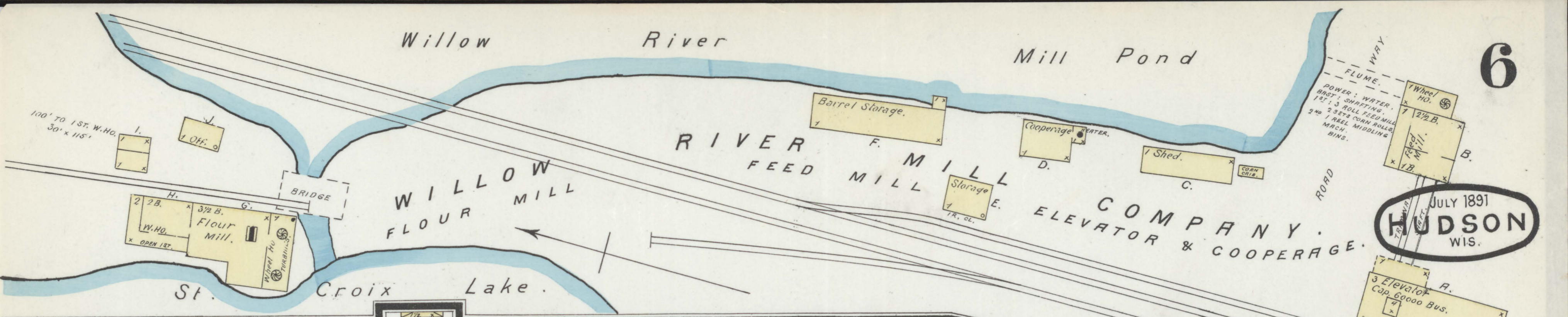
SHEET

ELM

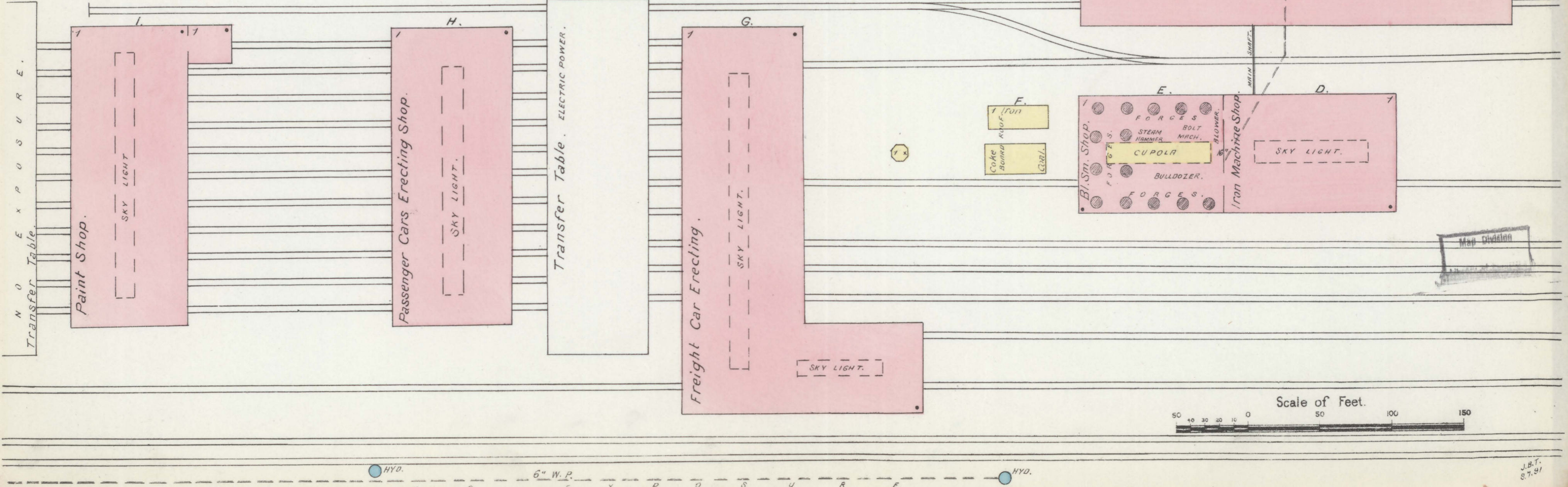
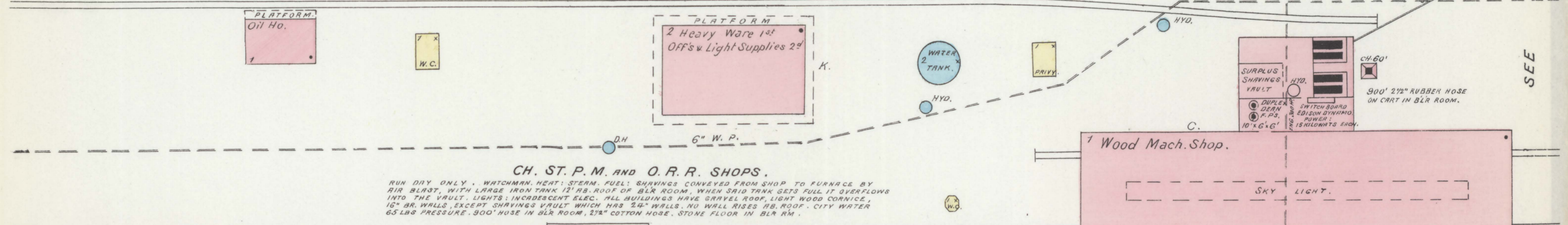
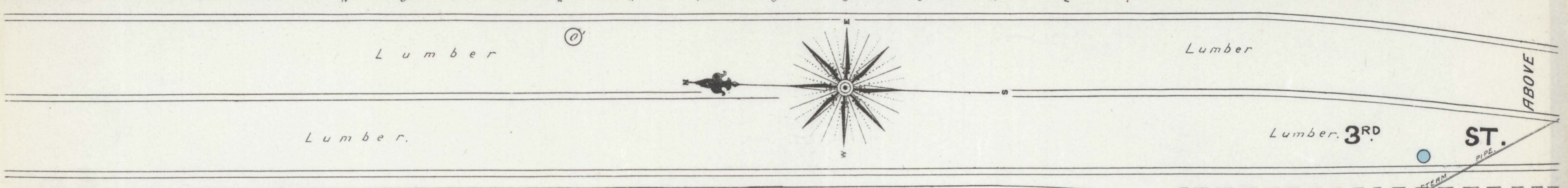
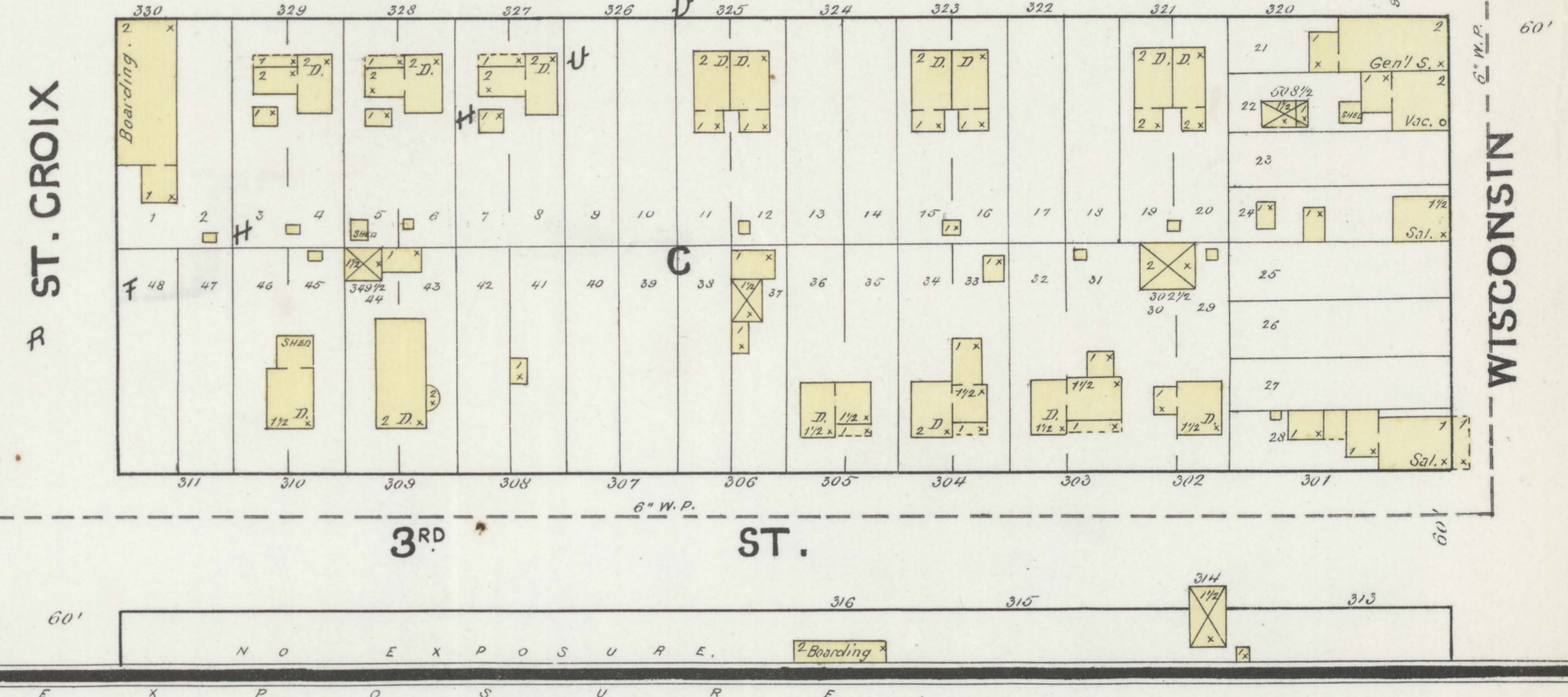
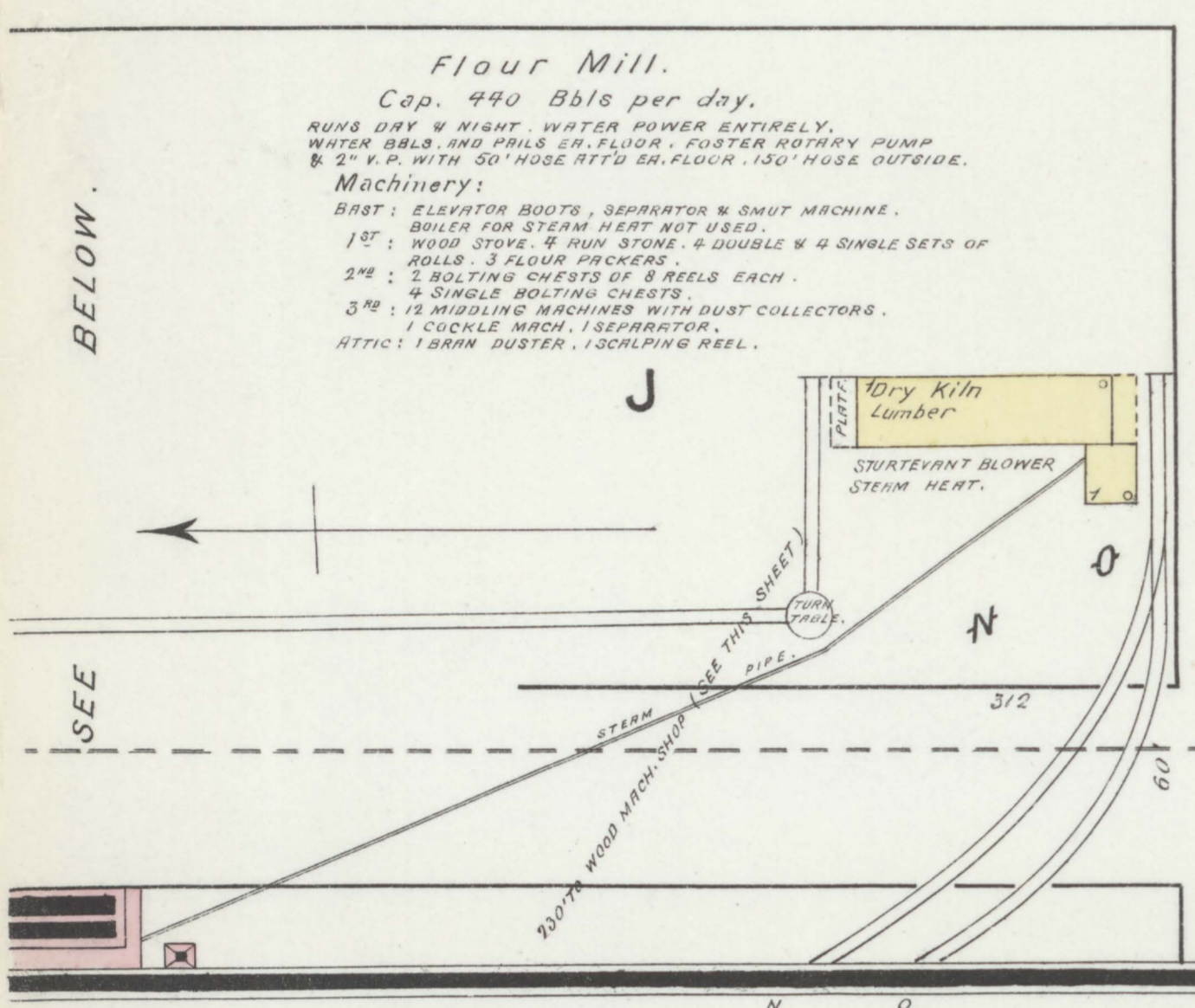
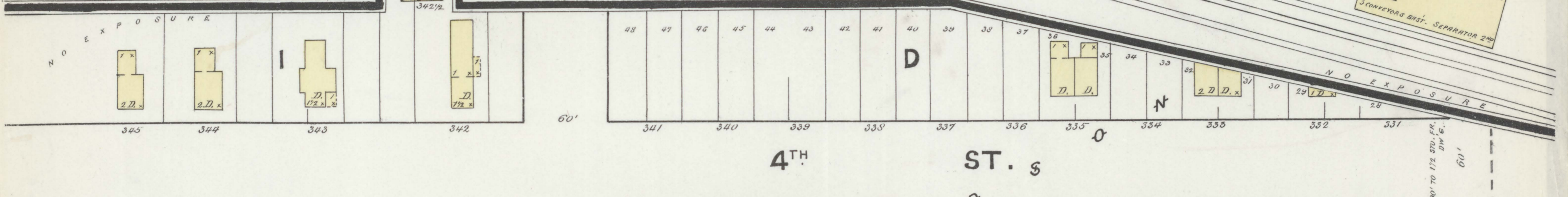
SEE

SEE

SEE



JULY 1891
HUDSON
 WIS.



Scale of Feet.
 50 100 150