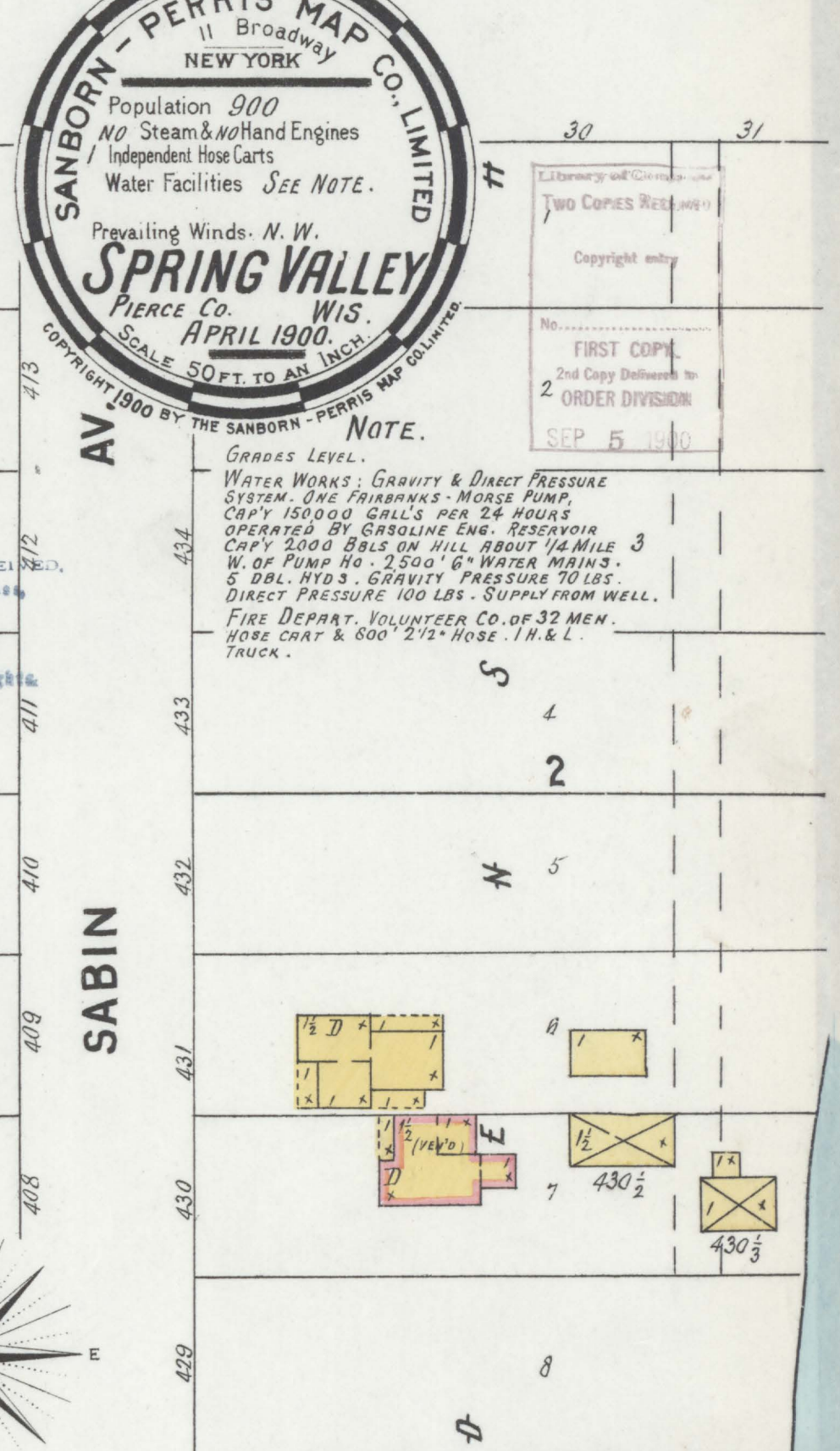
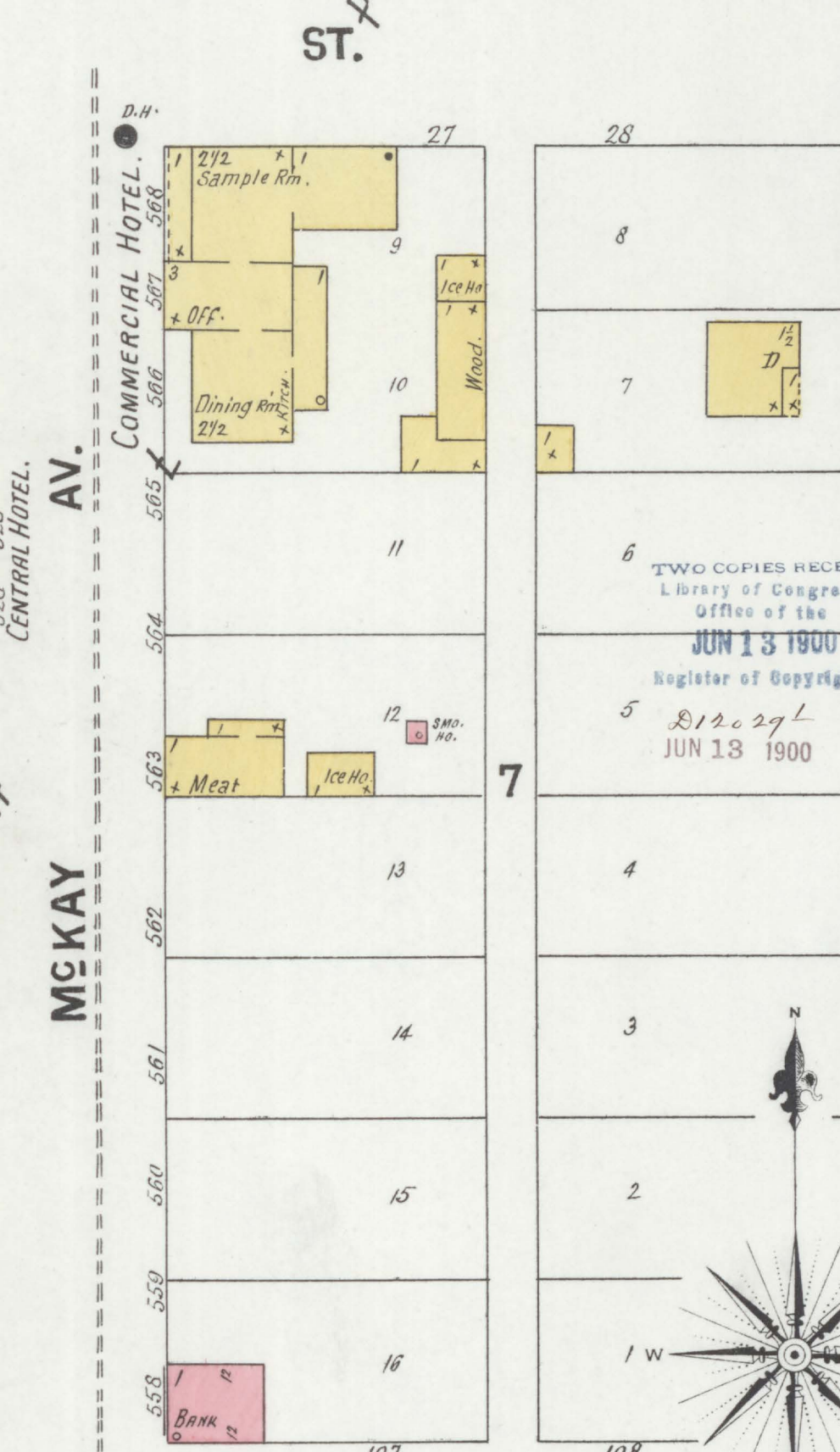
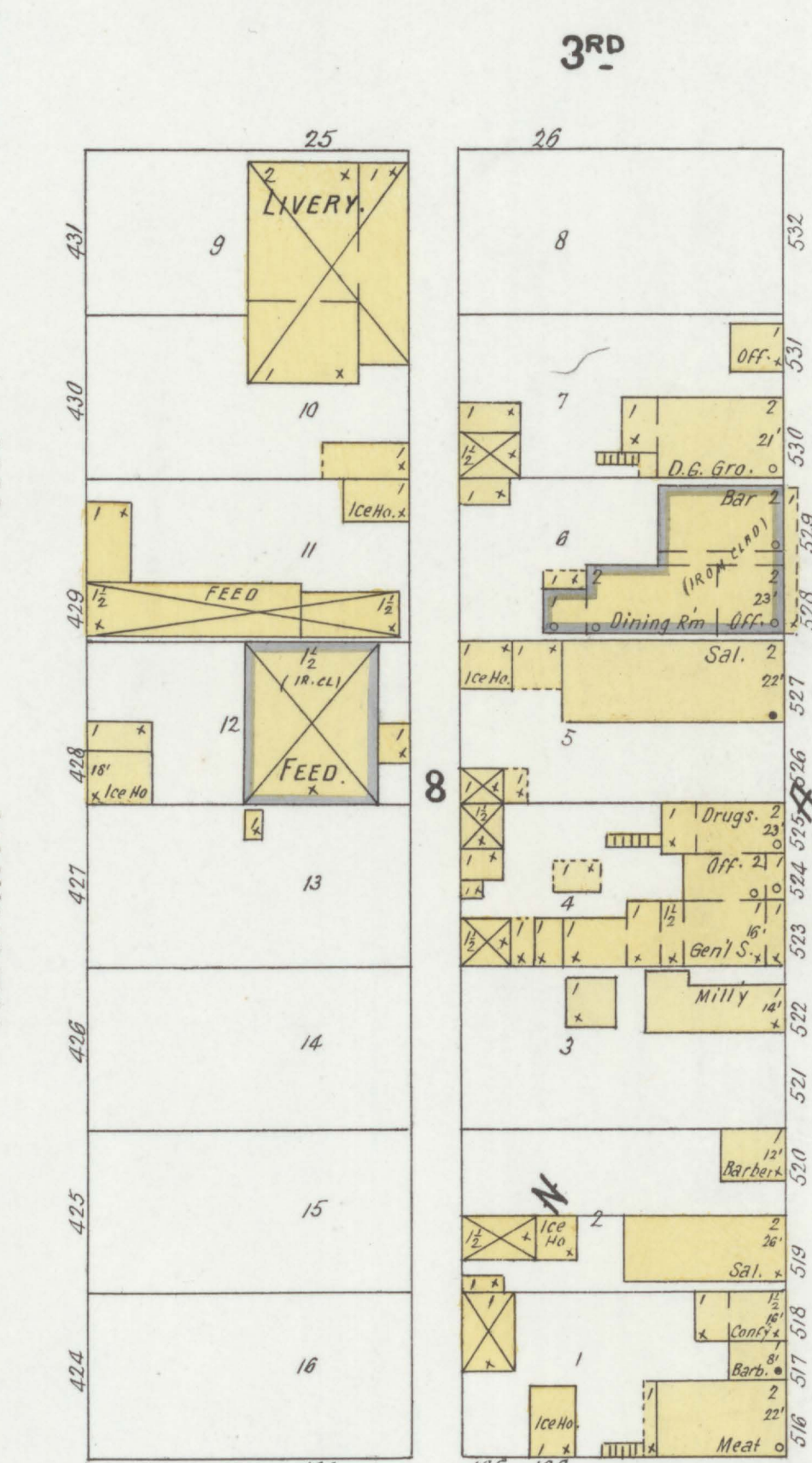
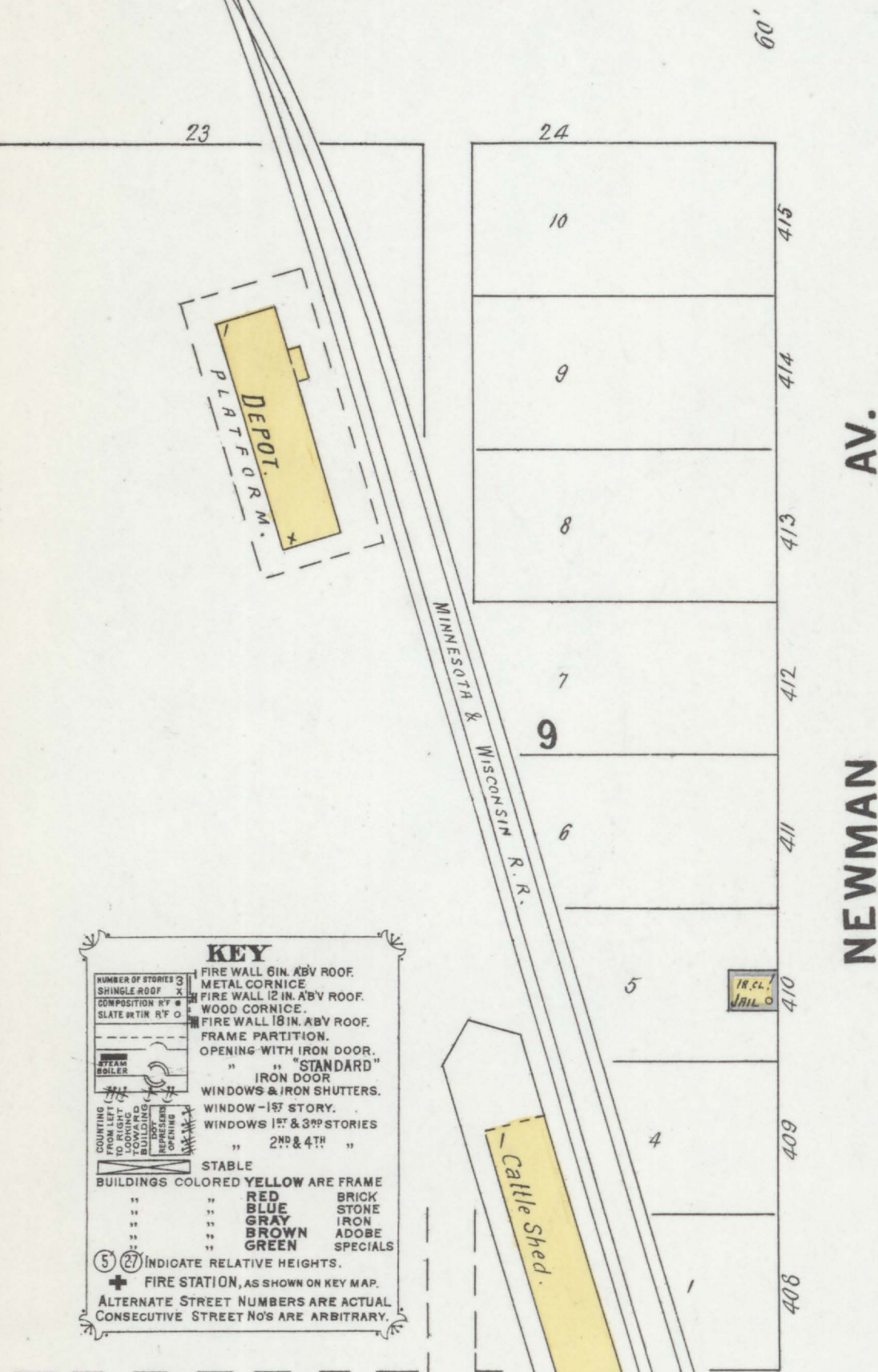
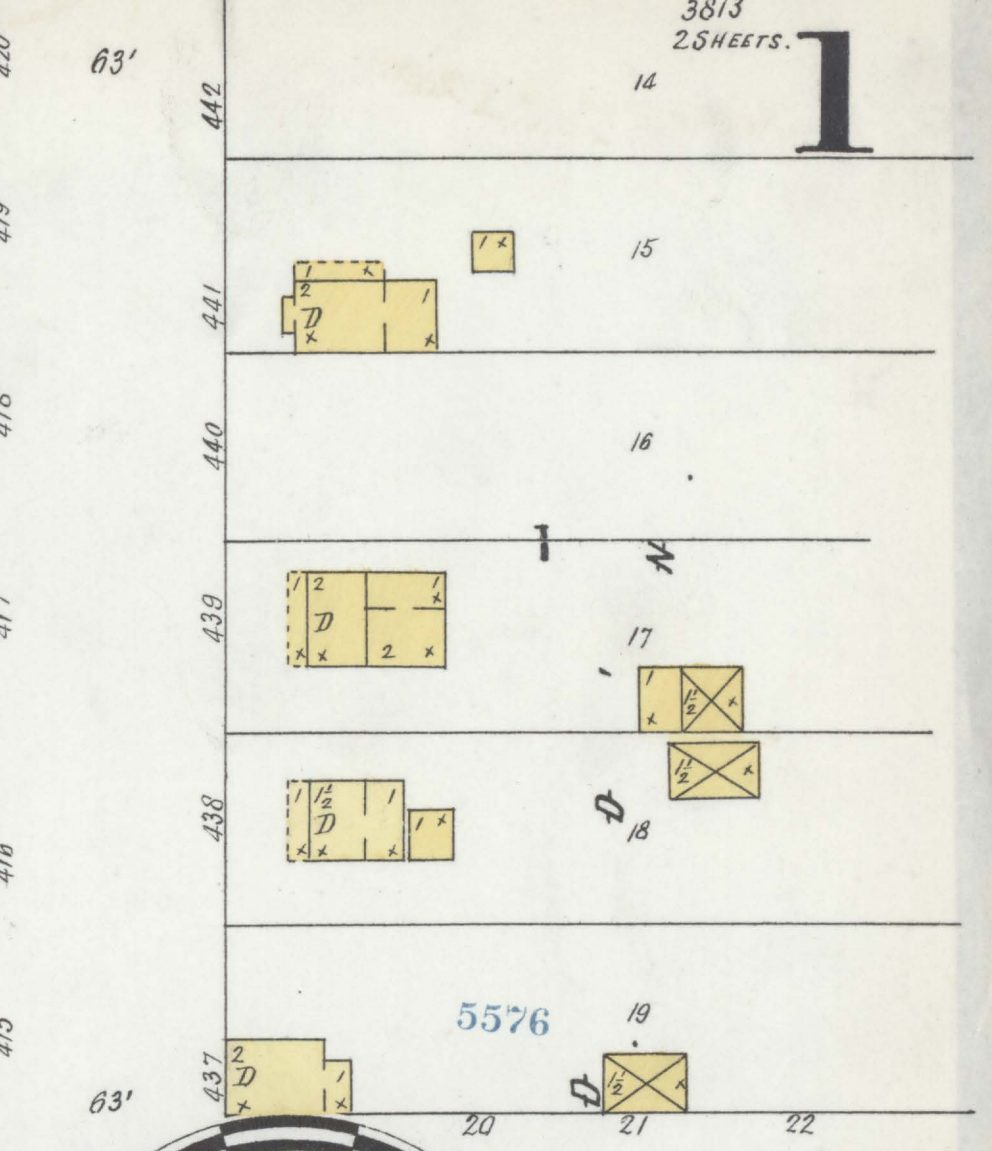
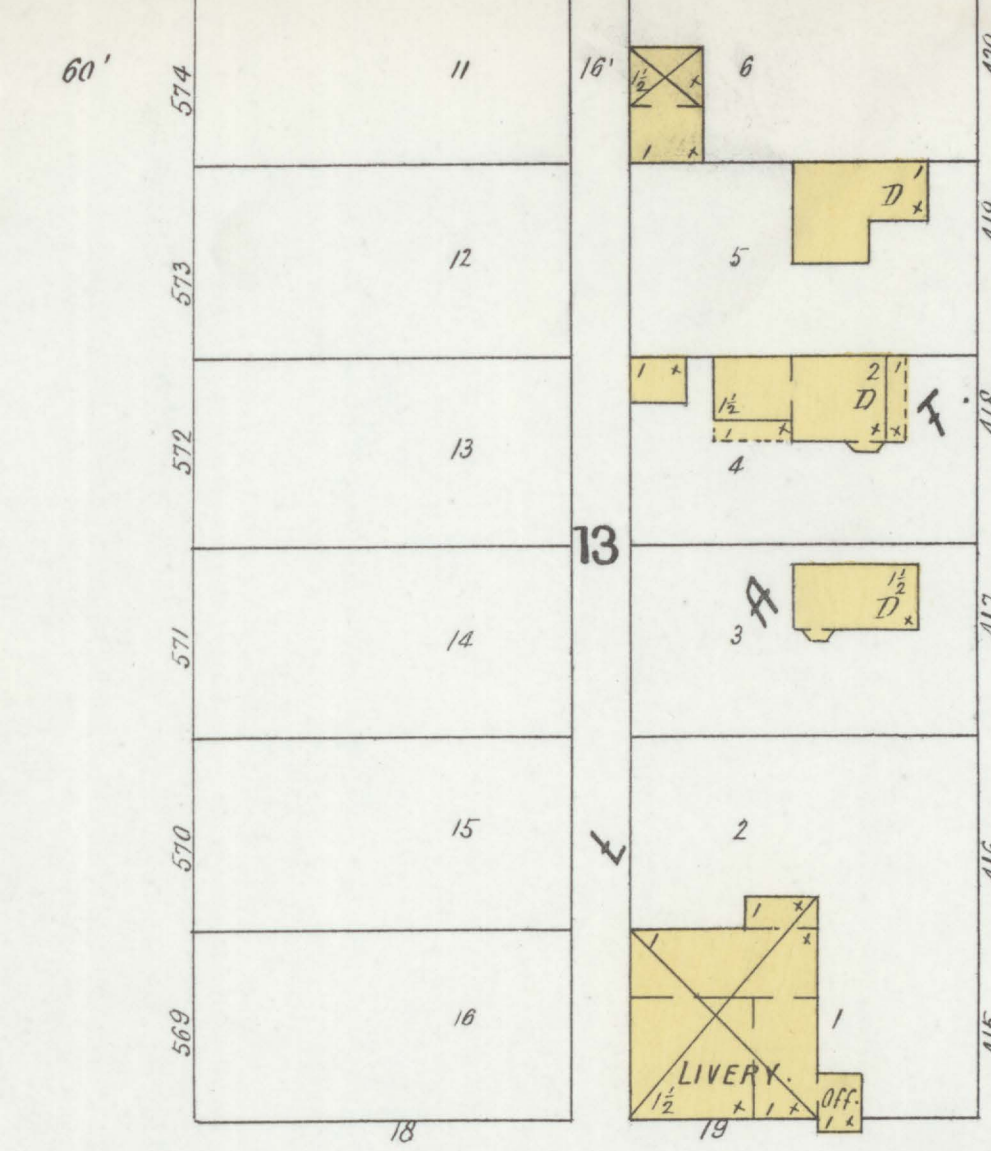
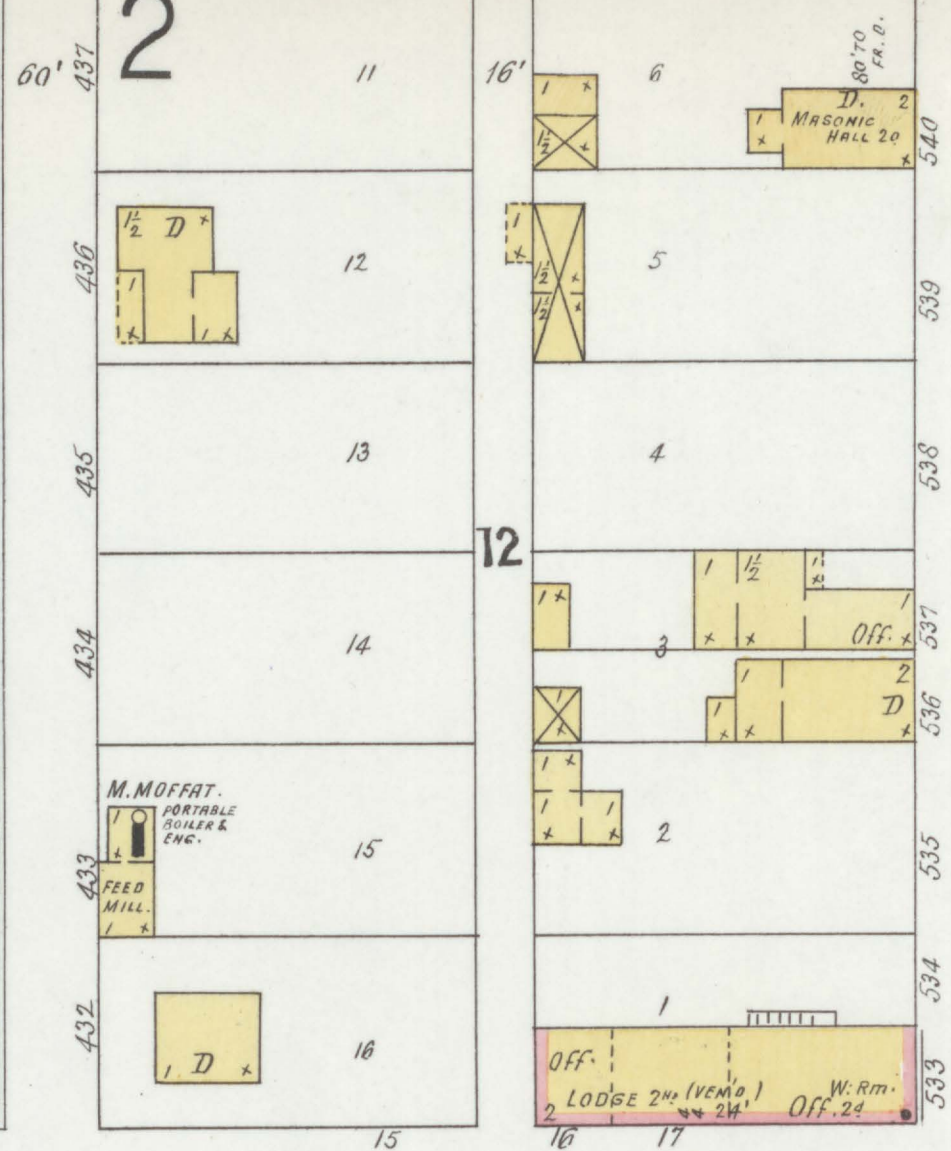
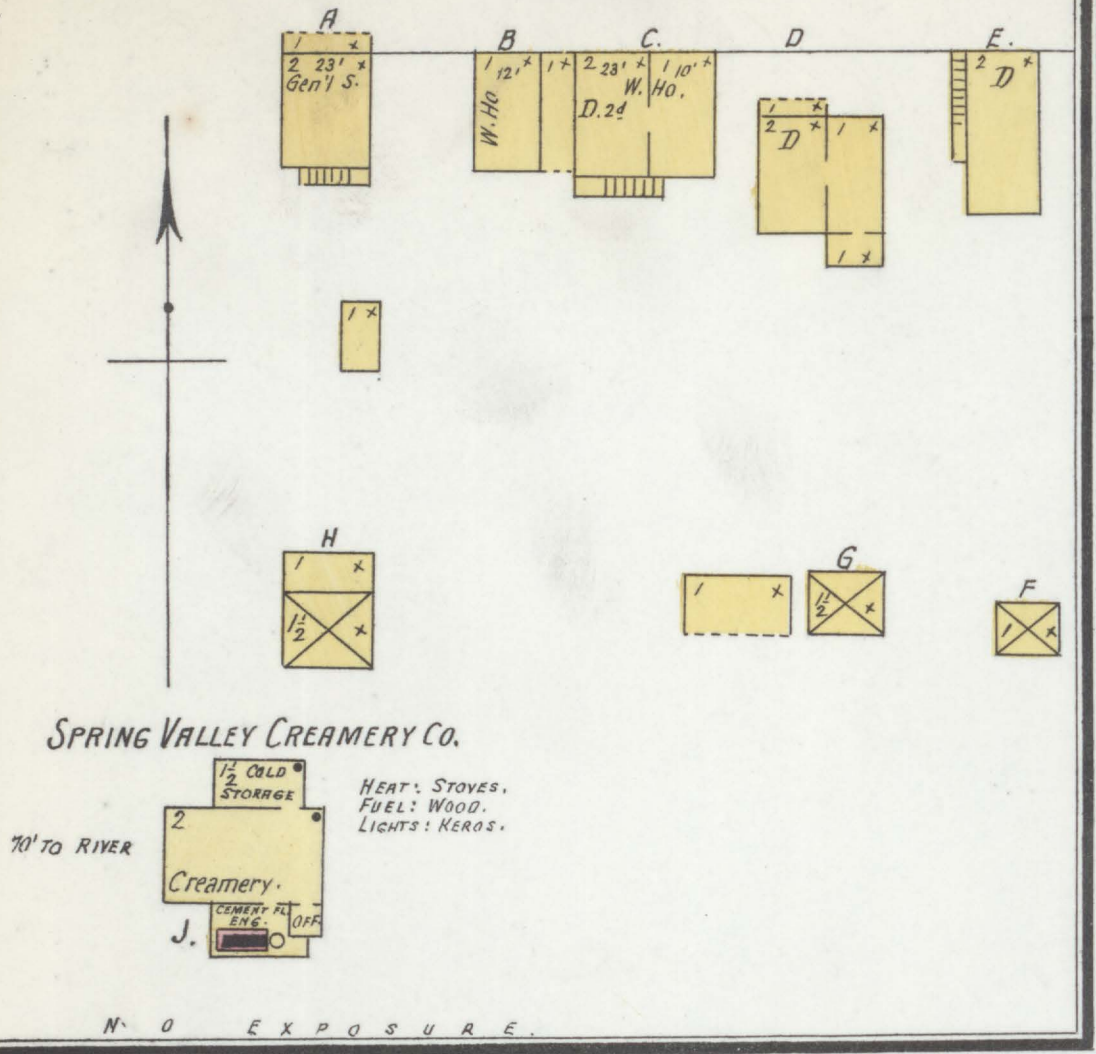


ROAD.



SANBORN - PERRIS MAP CO. LIMITED
11 Broadway
NEW YORK

Population 900
No. Steam & No. Hand Engines
Independent Hose Carts
Water Facilities See Note.

Prevailing Winds: N. W.
SPRING VALLEY
Pierce Co. Wis.
APRIL 1900.
SCALE 50 FT. TO AN INCH.

NOTE:
GRADES LEVEL.
WATER WORKS: GRAVITY & DIRECT PRESSURE SYSTEM. ONE FIREWORKS HORSE PUMP. CAP'Y 15000 GALLS PER 24 HOURS OPERATED BY GASOLINE ENG. RESERVOIR CAP'Y 2000 GALS ON HILL ABOUT 1/4 MILE W. OF PUMP NO. 2500' 6" WATER MAINS. 5 D.B.L. HYDS. GRAVITY PRESSURE 70 LBS. DIRECT PRESSURE 100 LBS. SUPPLY FROM WELL. FIRE DEPART. VOLUNTEER CO. OF 32 MEN. HOSE CART & 800' 2 1/2" HOSE. 1 H. & L. TRUCK.

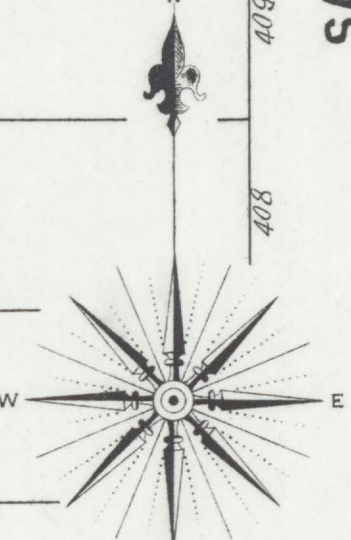
TWO COPIES RECEIVED
Library of Congress
Office of the
JUN 13 1900
Register of Copyrights
5 D12029 L
JUN 13 1900

KEY

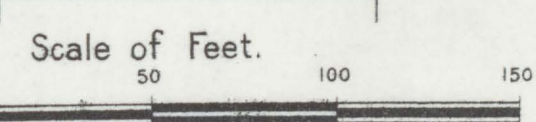
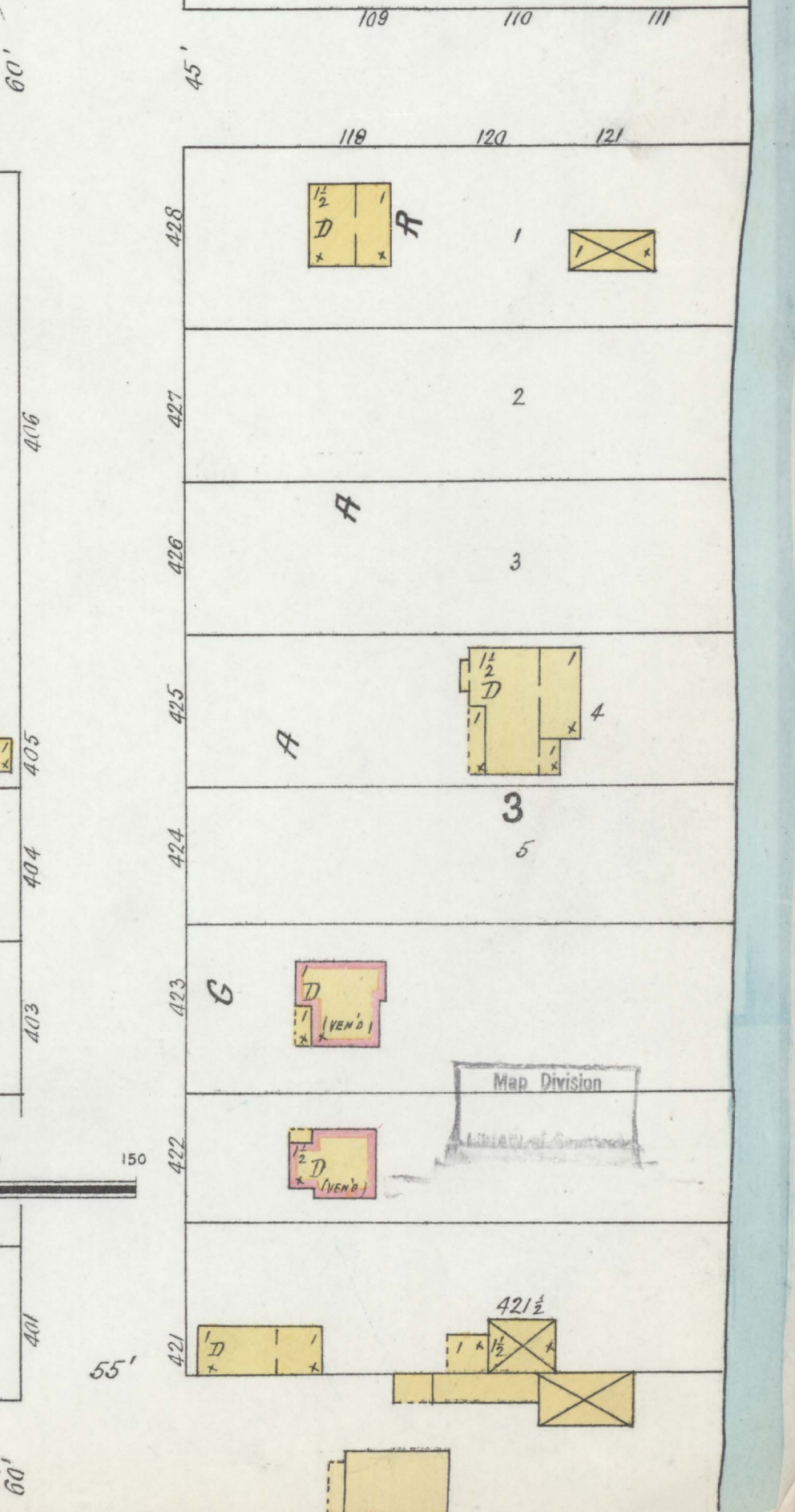
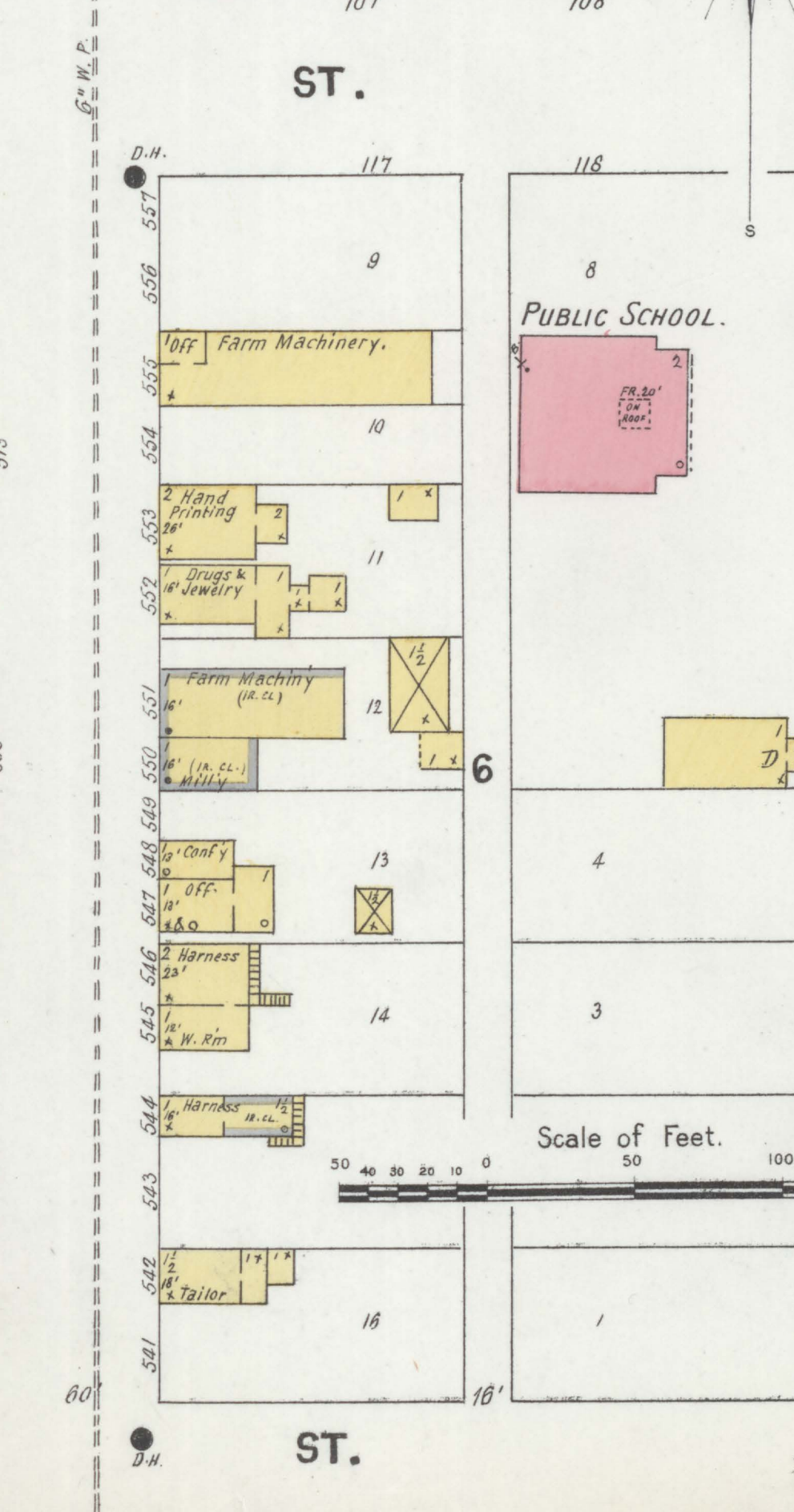
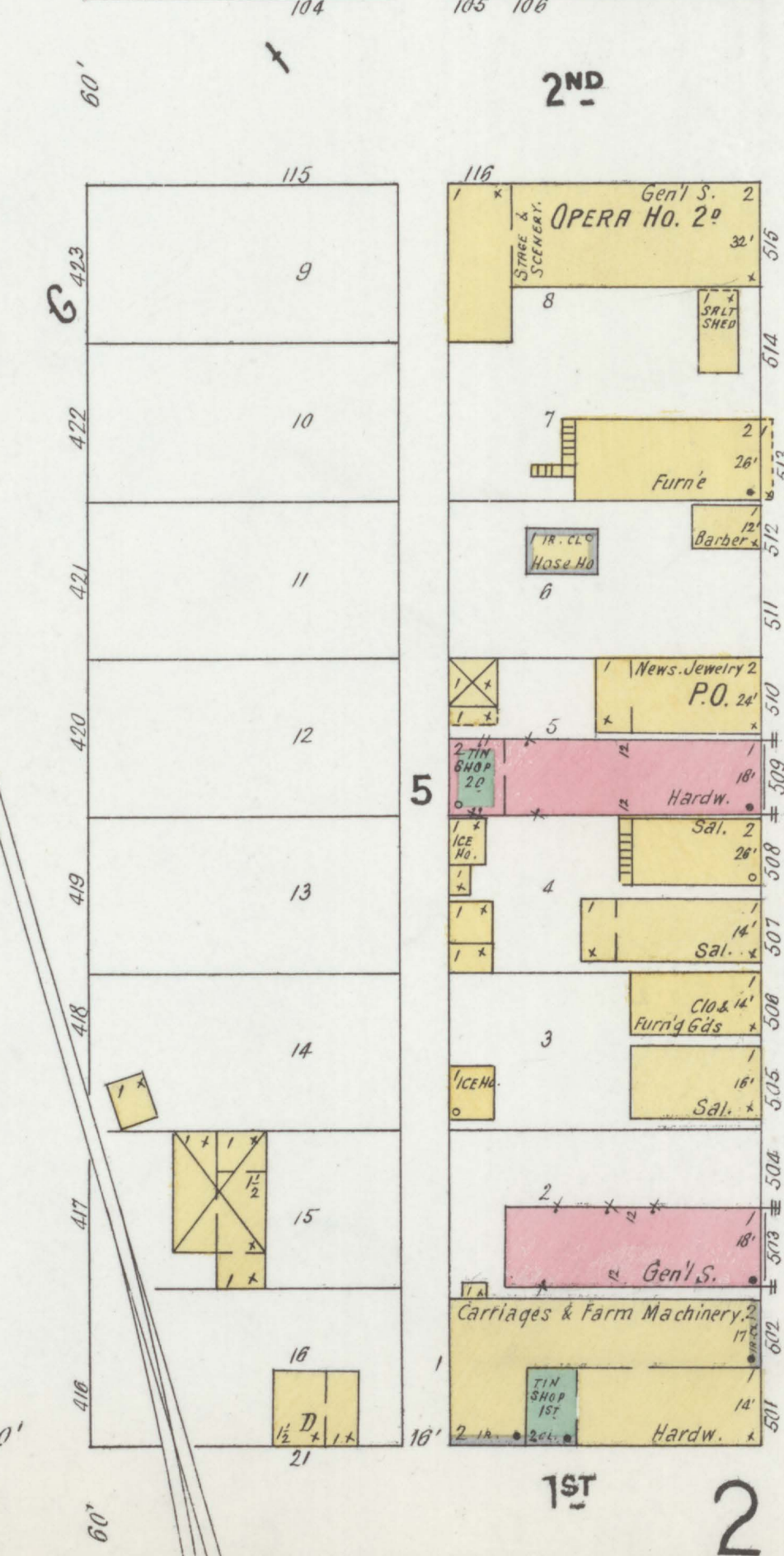
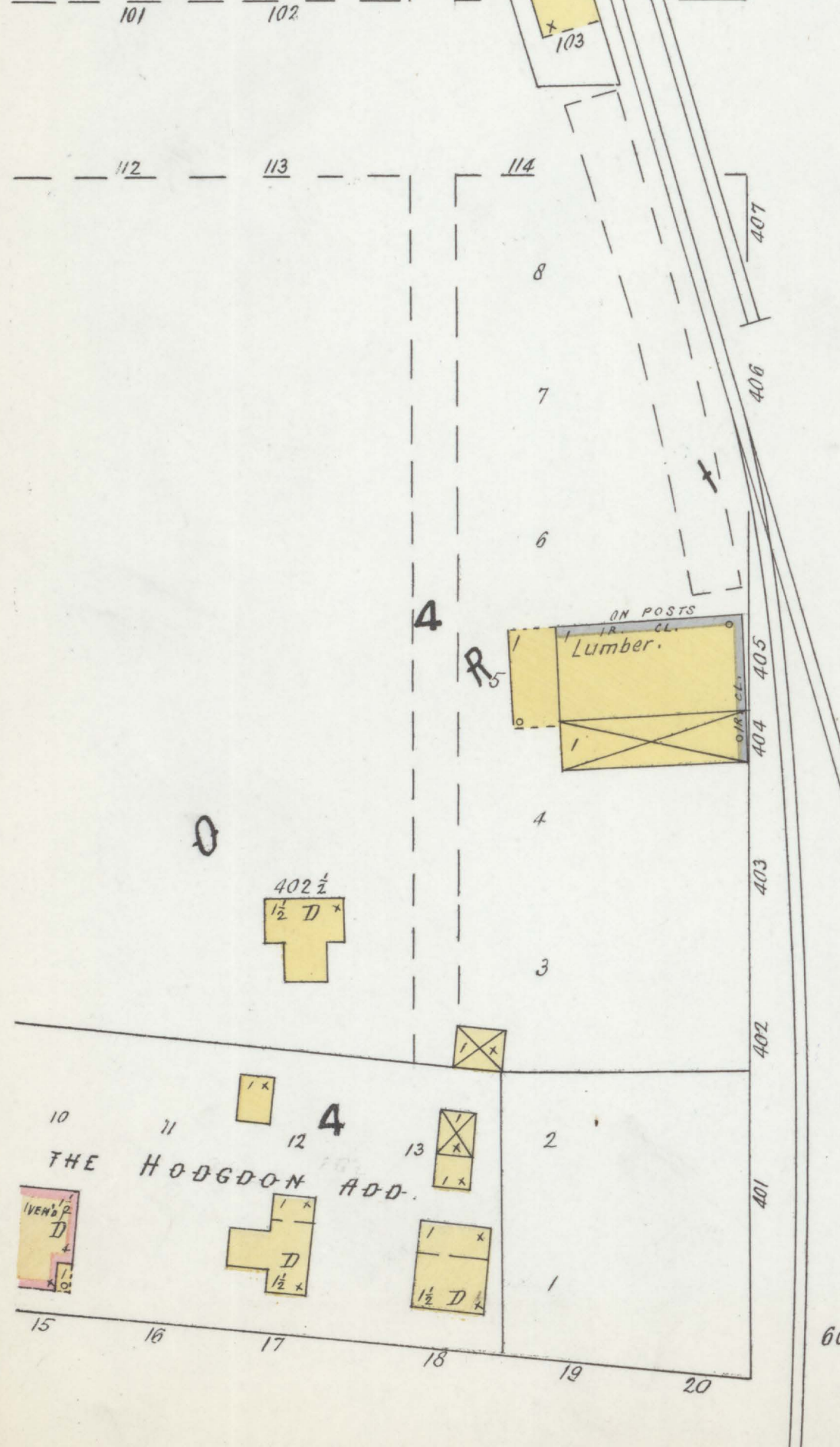
FIRE WALL SIN. A.B.V. ROOF
 METAL CORNICE
 FIRE WALL, C. IN A.B.V. ROOF.
 WOOD CORNICE
 FIRE WALL, D. IN A.B.V. ROOF.
 FRAME PARTITION
 OPENING WITH IRON DOOR
 "STANDARD"
 IRON DOOR
 WINDOWS & IRON SHUTTERS.
 WINDOW - 1ST STORY.
 WINDOWS 1ST & 2ND STORIES
 " 2ND & 4TH "

BUILDINGS COLORED YELLOW ARE FRAME
 RED BRICK
 BLUE STONE
 GRAY IRON
 BROWN ADOBE
 GREEN SPECIALS

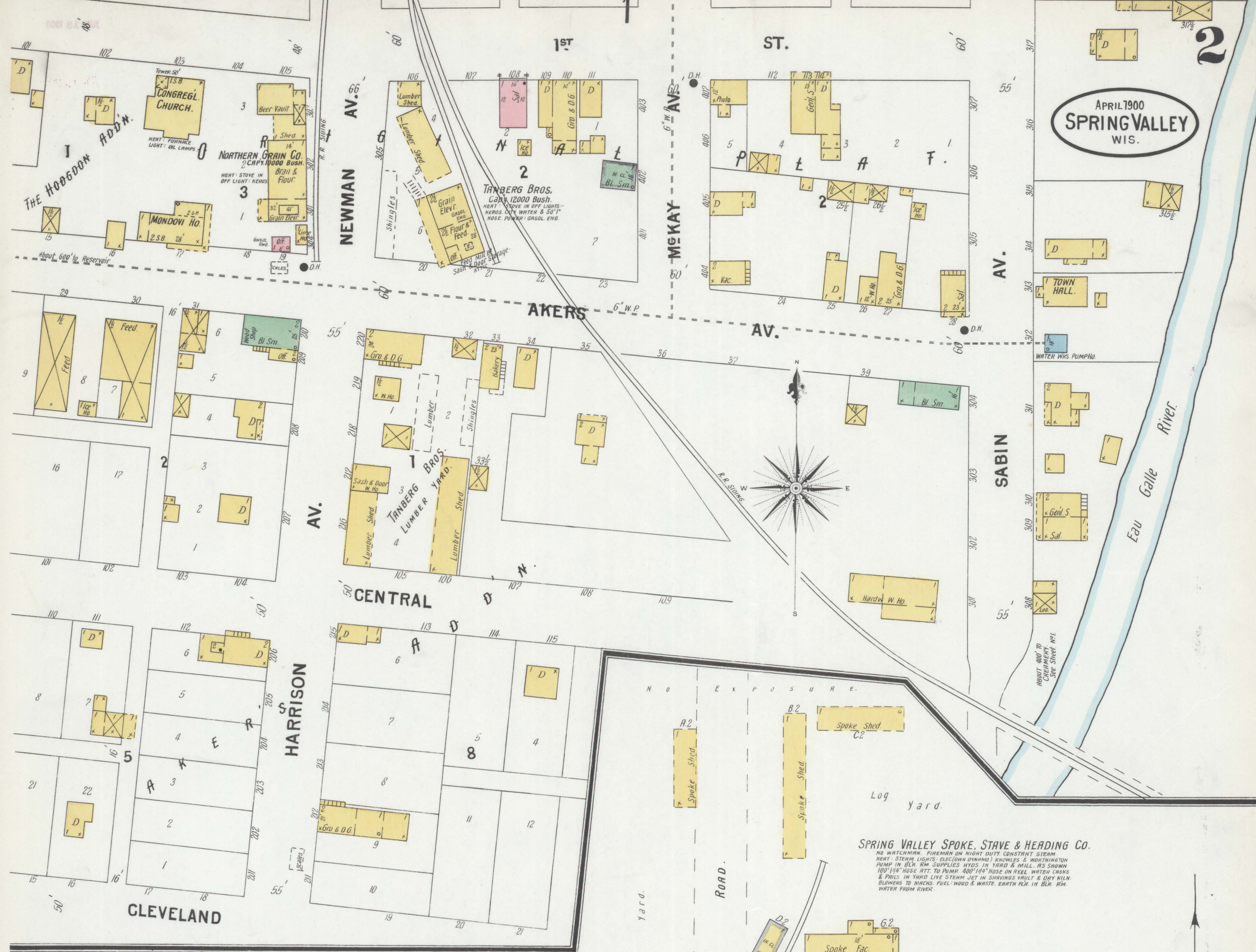
(S) INDICATE RELATIVE HEIGHTS.
 FIRE STATION, AS SHOWN ON KEY MAP.
 ALTERNATE STREET NUMBERS ARE ACTUAL
 CONSECUTIVE STREET NOS. ARE ARBITRARY.



ST.



APRIL 1900
SPRING VALLEY
 WIS.



SPRING VALLEY SPOKE, STAVE & HEADING CO.
 NO WATCHMAN. FIREMAN ON NIGHT DUTY. CONSTANT STEAM.
 HEAT: STEAM LIGHTS. ELEC. (OWN DYNAMO) KNOWLES & WORTHINGTON
 PUMP IN BLK. RM. SUPPLIES HYD. IN YARD & MILL. AS SHOWN
 100' H. HOSE ATT. TO PUMP. 400' H. HOSE ON REEL. WATER CASKS
 & PAILS. IN YARD LIVE STEAM JET IN SHAVINGS VAULT & DRY MILN.
 BLOWERS TO MACHS. FUEL: WOOD & WASTE. EARTH FLK. IN BLK. RM.
 WATER FROM RIVER.

SPRING VALLEY FURNACE CO.
 RUNS NIGHT & DAY LIGHT. KEROS. LARGE KNOWLES AND WORTHINGTON
 PUMPS IN ENG. RM. SUPPLY HYD. IN CRISTO RD. & STACK SHED 120' 11/2"
 HOSE. SUPPLY FROM RIVER. FUEL: COAL & SLOW. BLK. HD. IS ALL IRON. EARTH
 FLOOR. CASTS: HD. ALL BRICK & IRON. ELEV. BUILDG. 50' HIGH HAS 24" WALLS
 EXCEPT TOP STORY WHICH IS 16"

