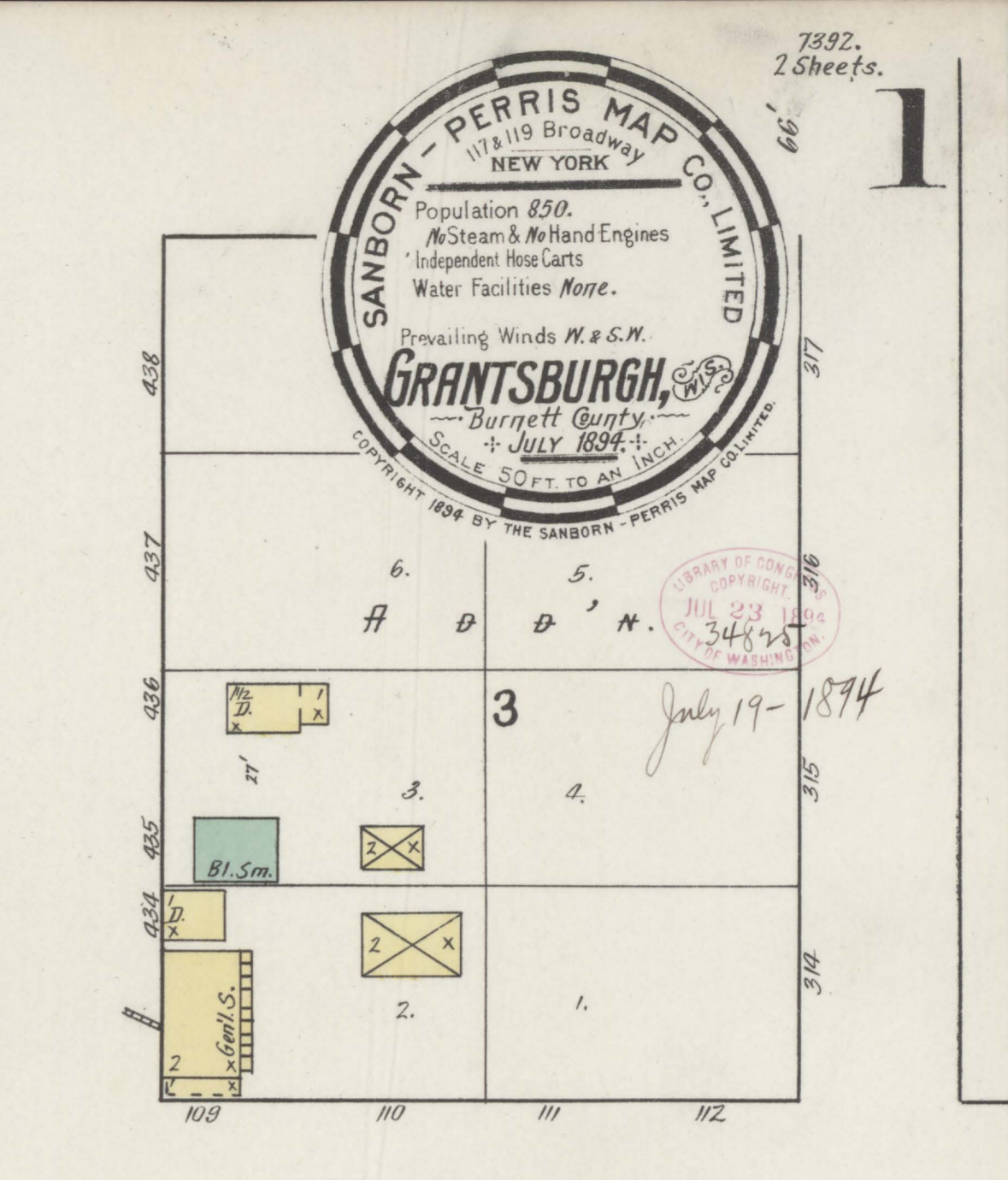
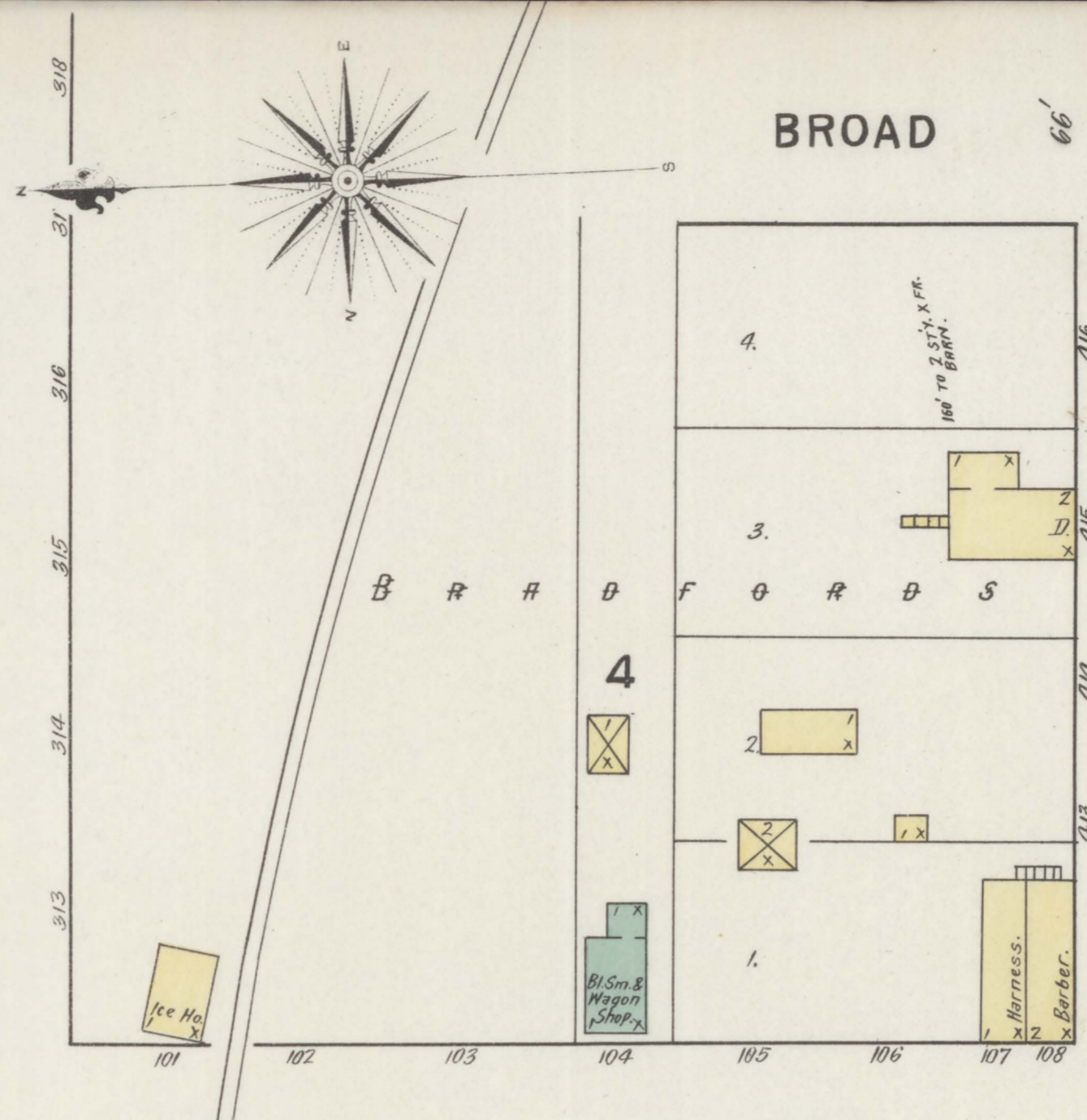
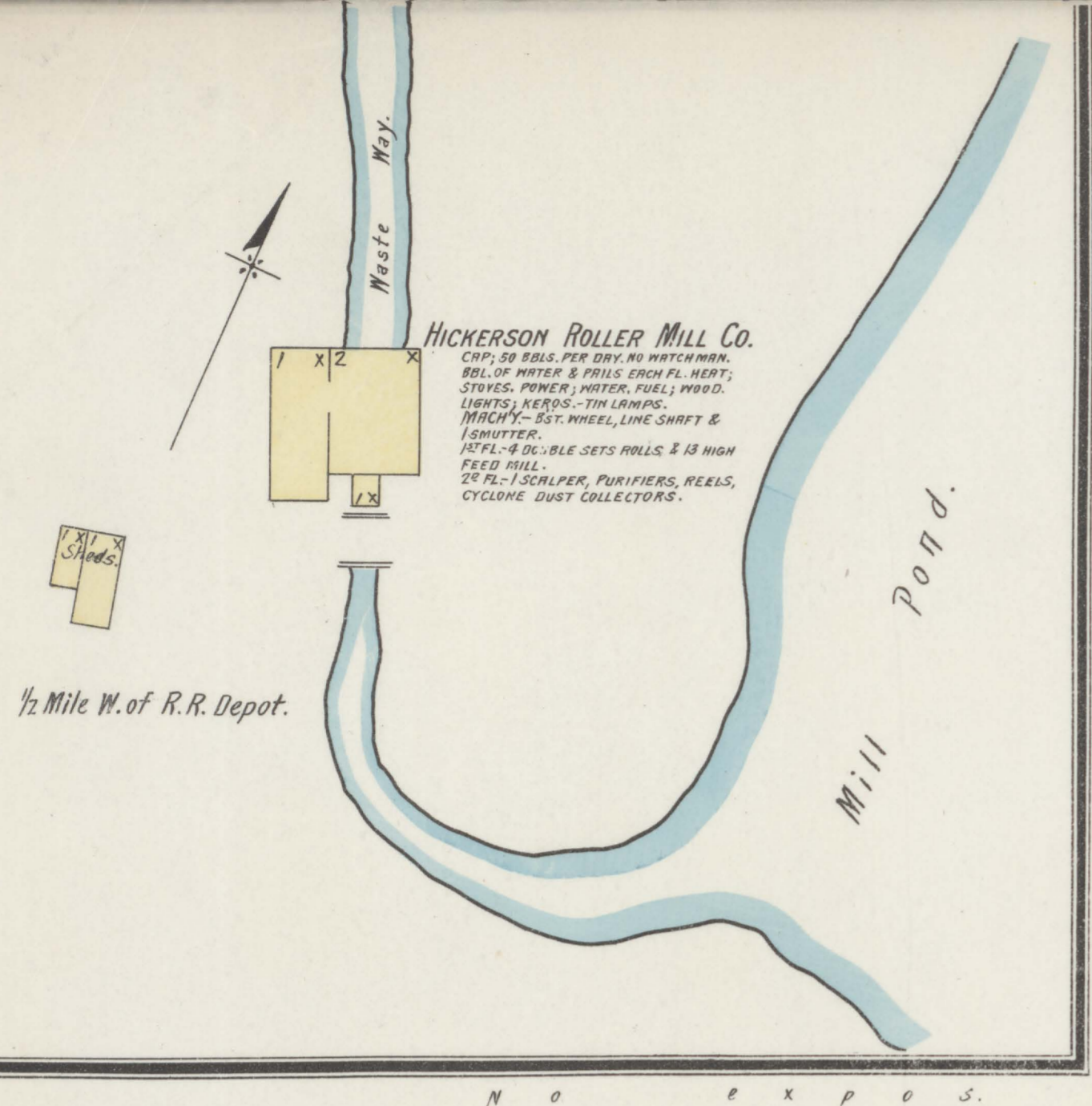
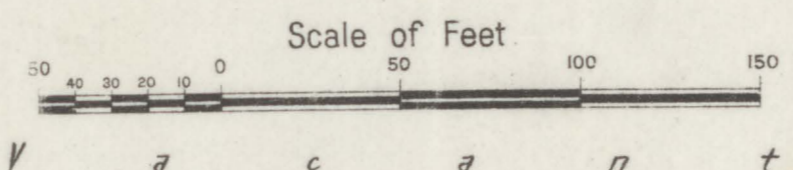
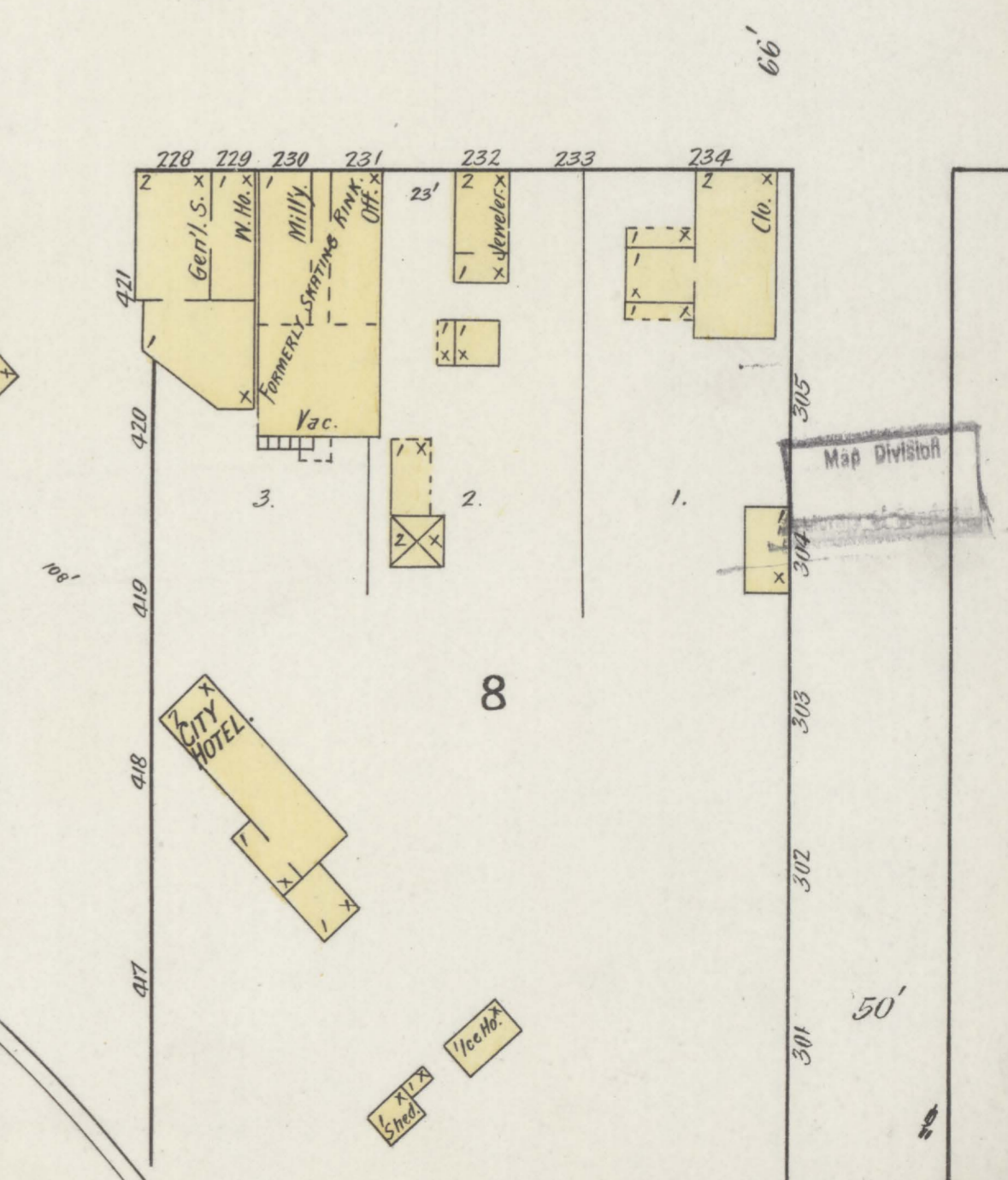
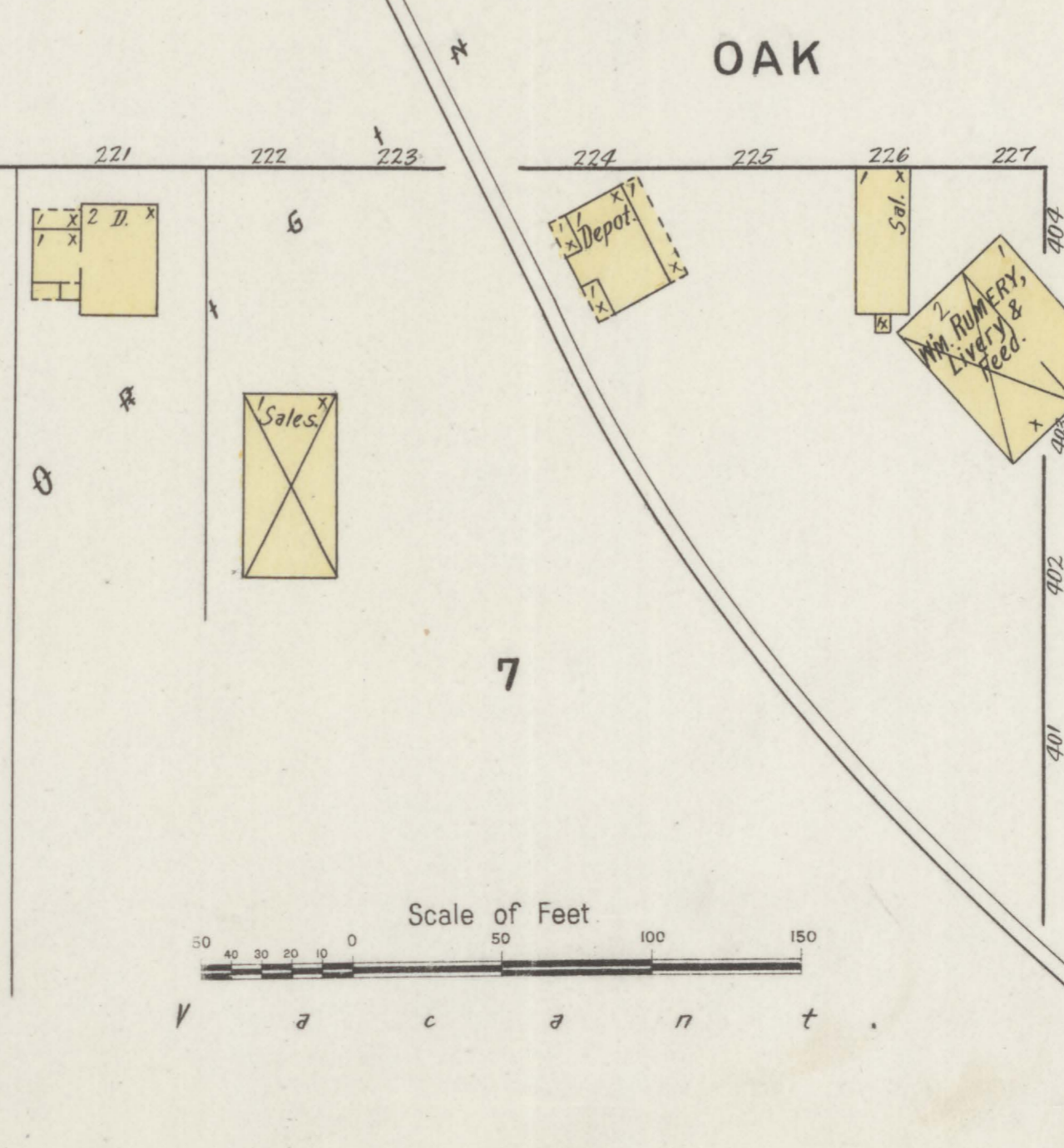
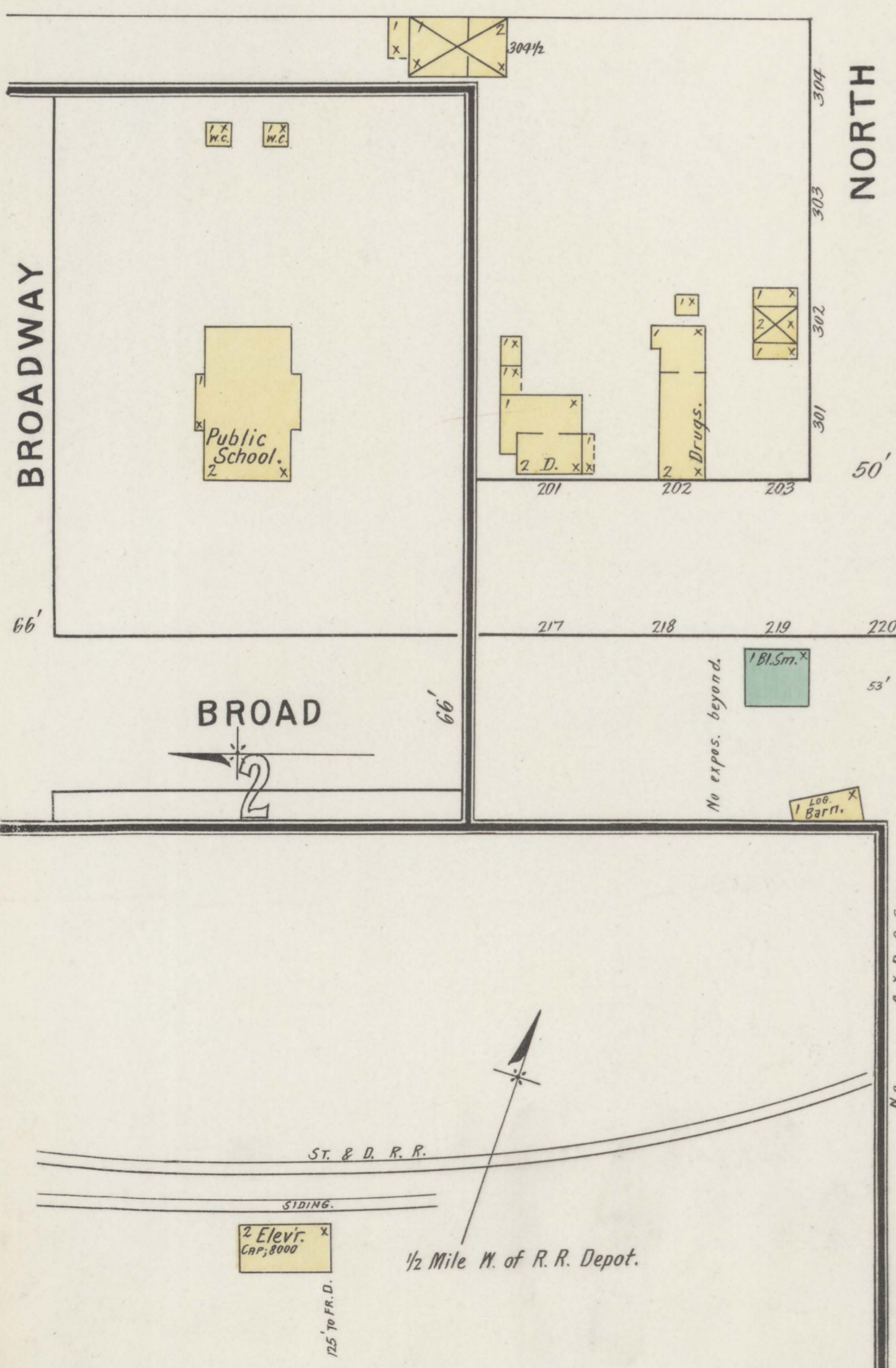
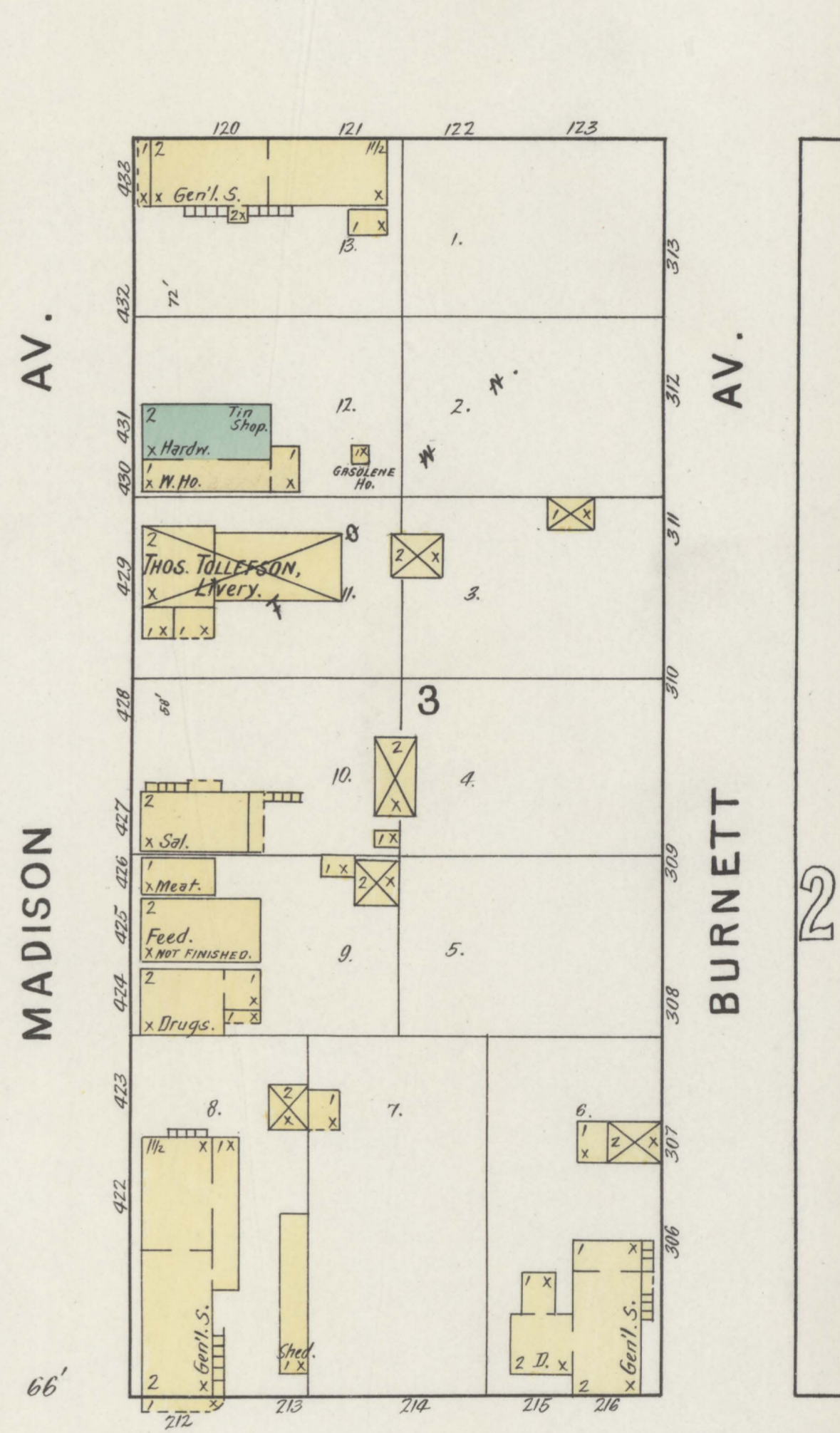
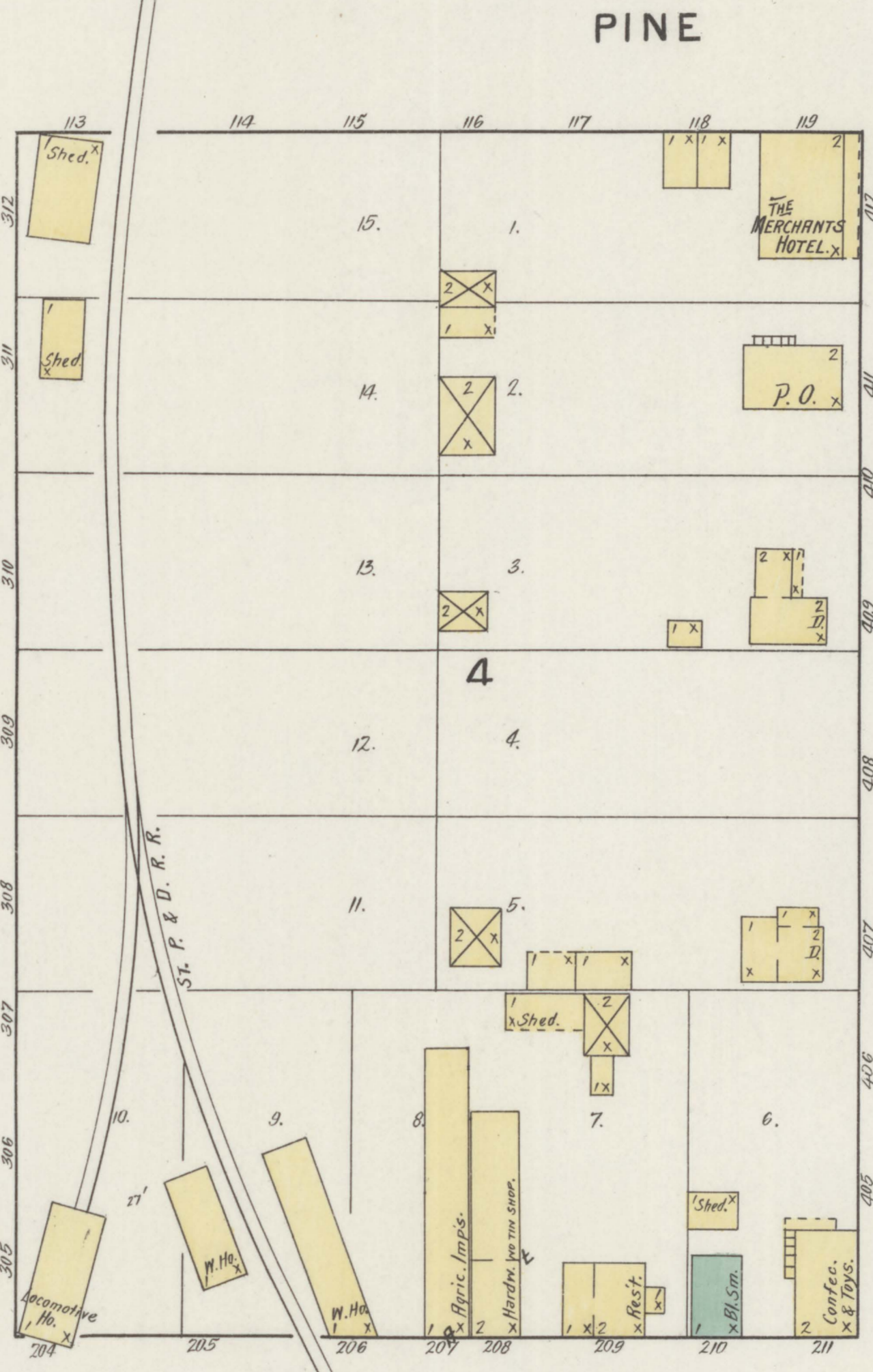
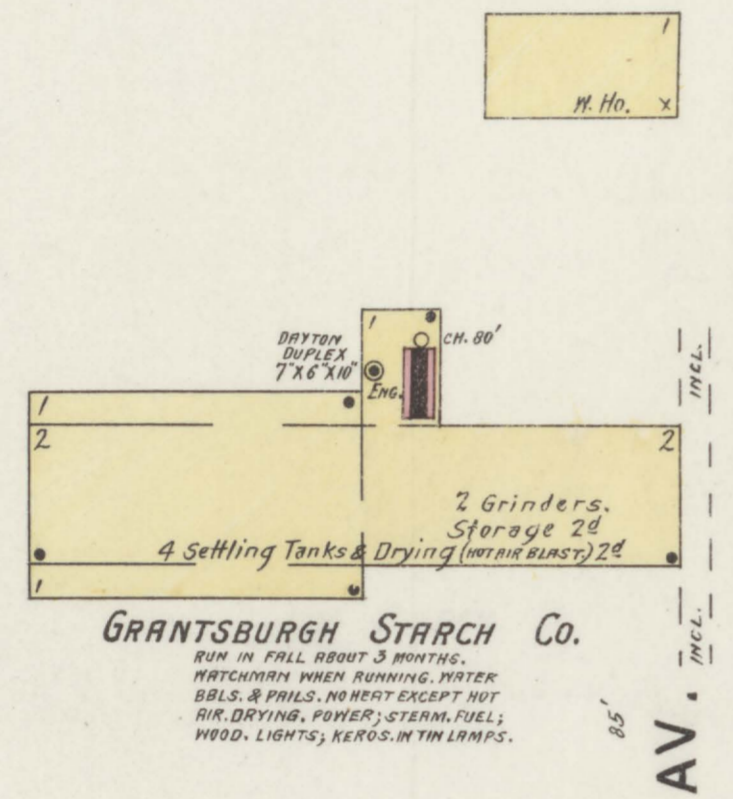


July 19-1874

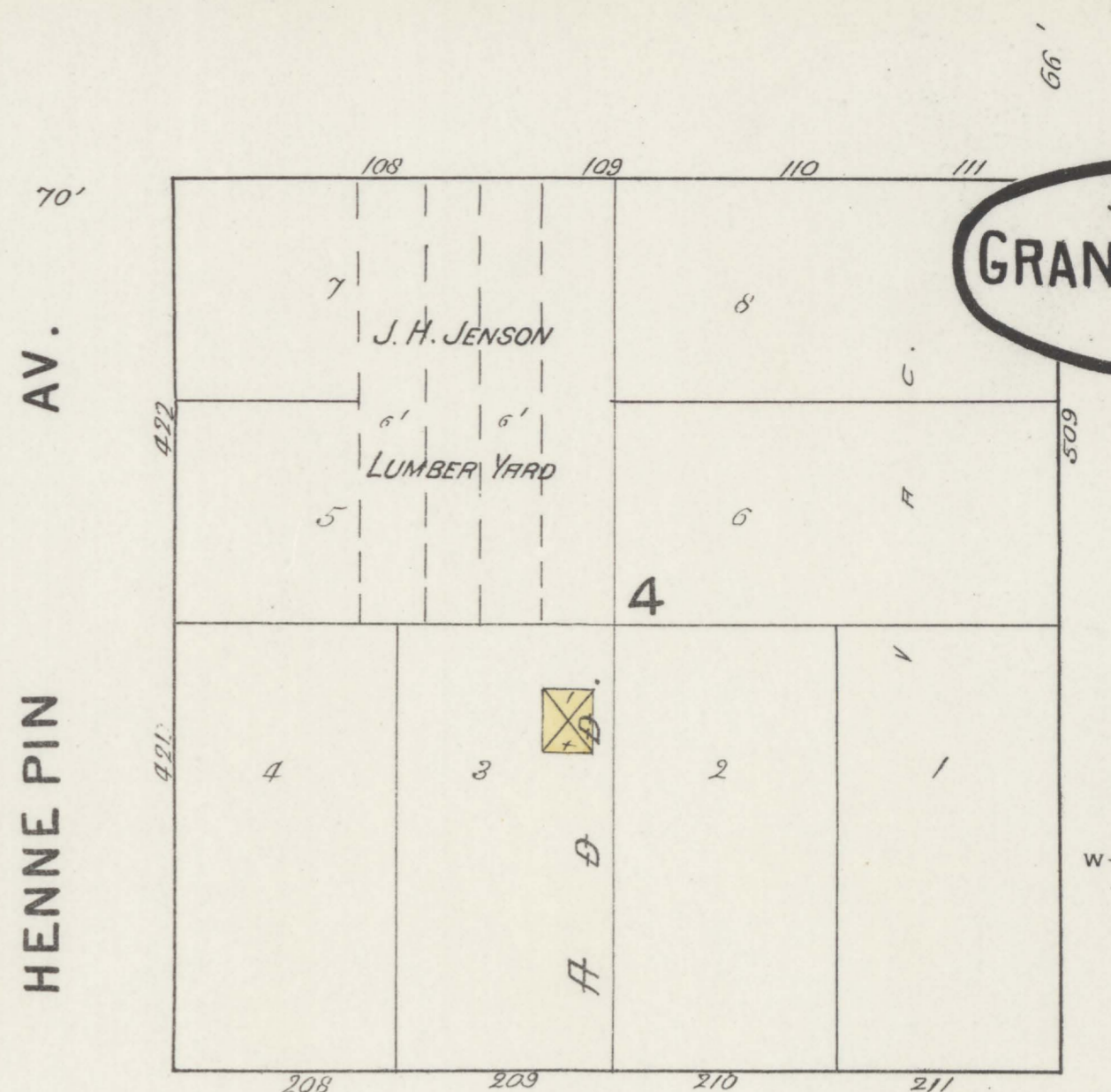
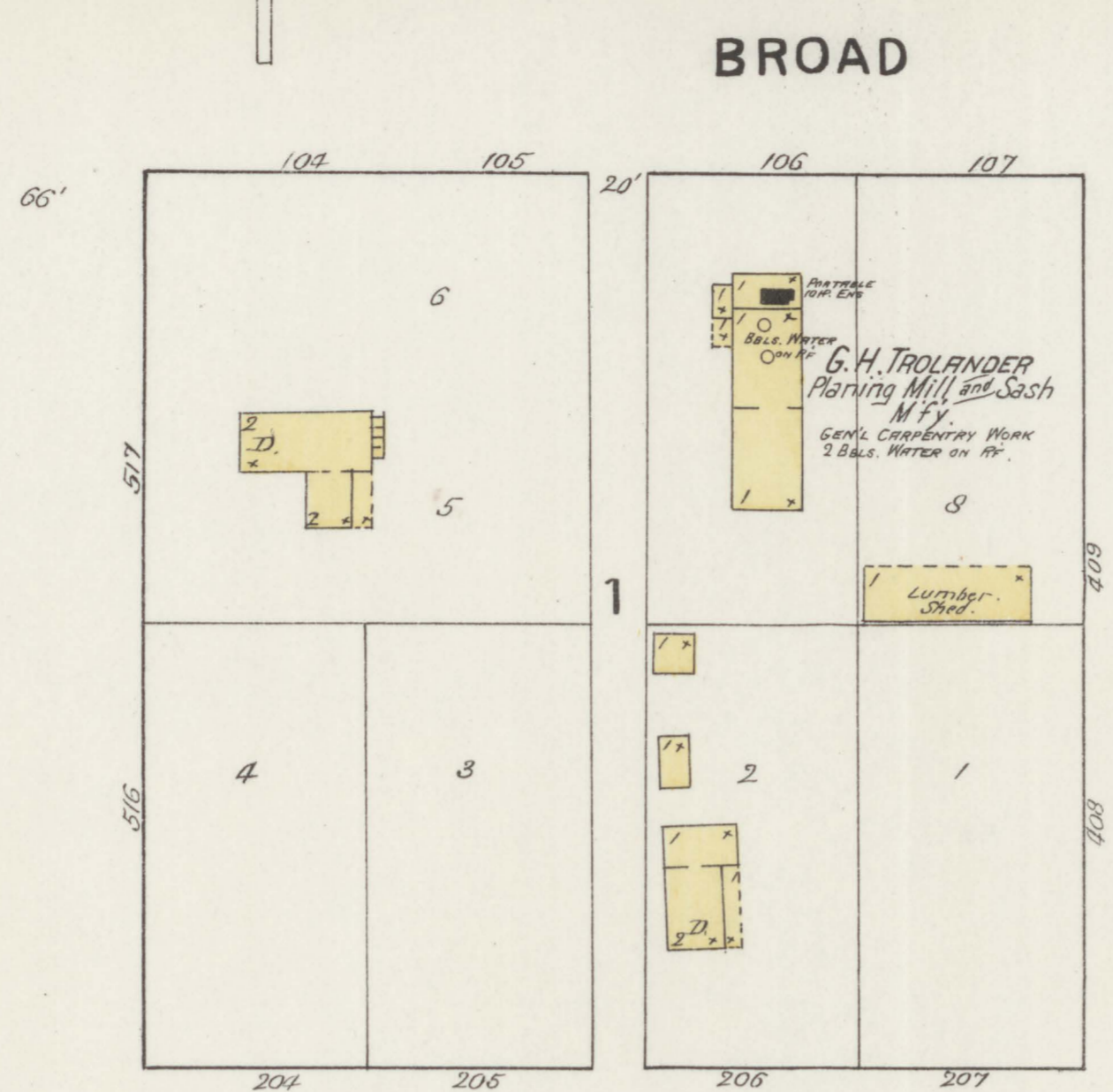
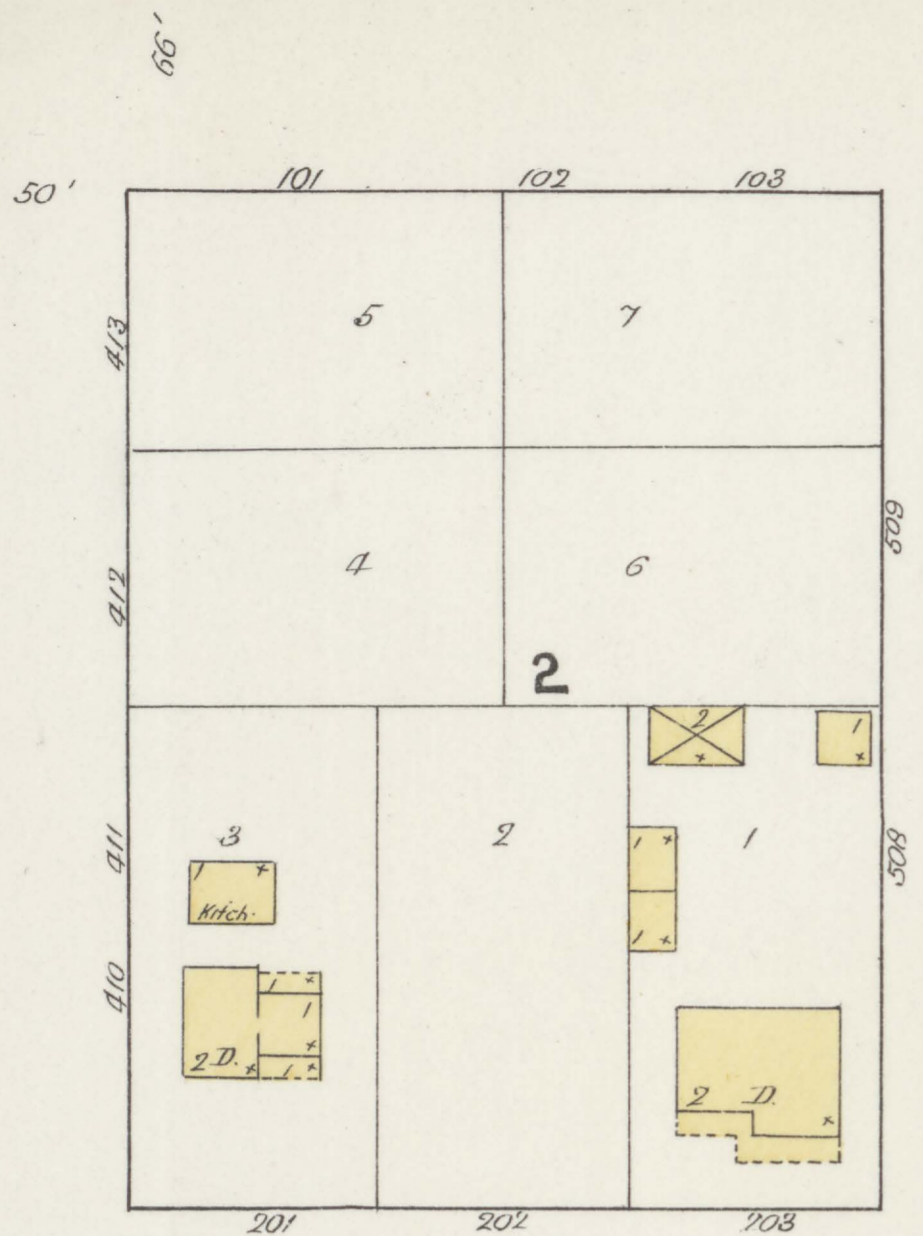


KEY
FIRE WALL 6 IN. AS ROOF
CORNER ROOF
COMPOSITE ROOF
FRAM PARTITION
TRAM PARTITION
OPENING & IRON DOOR
WINDOWS - SHUTTERS
STABLE
WINDOW IN 1ST STORY
BLDGS COLORED YELLOW ARE FRAME
RED BRICK
BLUE STONE
GREY IRON
BROWN ADORNE
GREEN SPECIALS
MARKED (S) ARE CLOTH LINED
(C) INDICATE RELATIVE HEIGHTS
ALTERNATE STREET NOS ARE ACTUAL
CONSECUTIVE - ARBITRARY
BROKEN LINE NEAR BLDG - WOOD CORNICE
SOLID - METAL



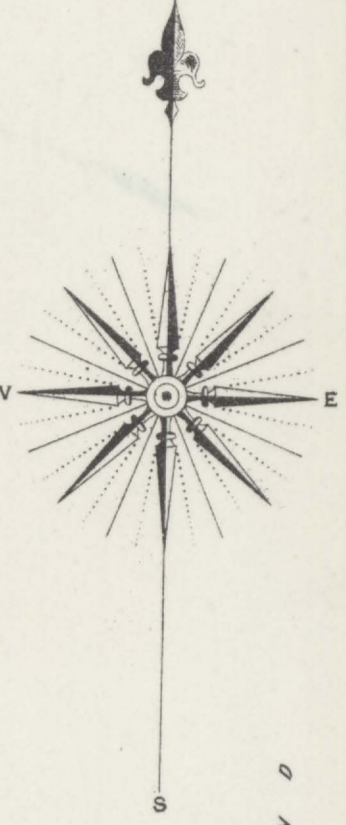
Map Division

BROAD

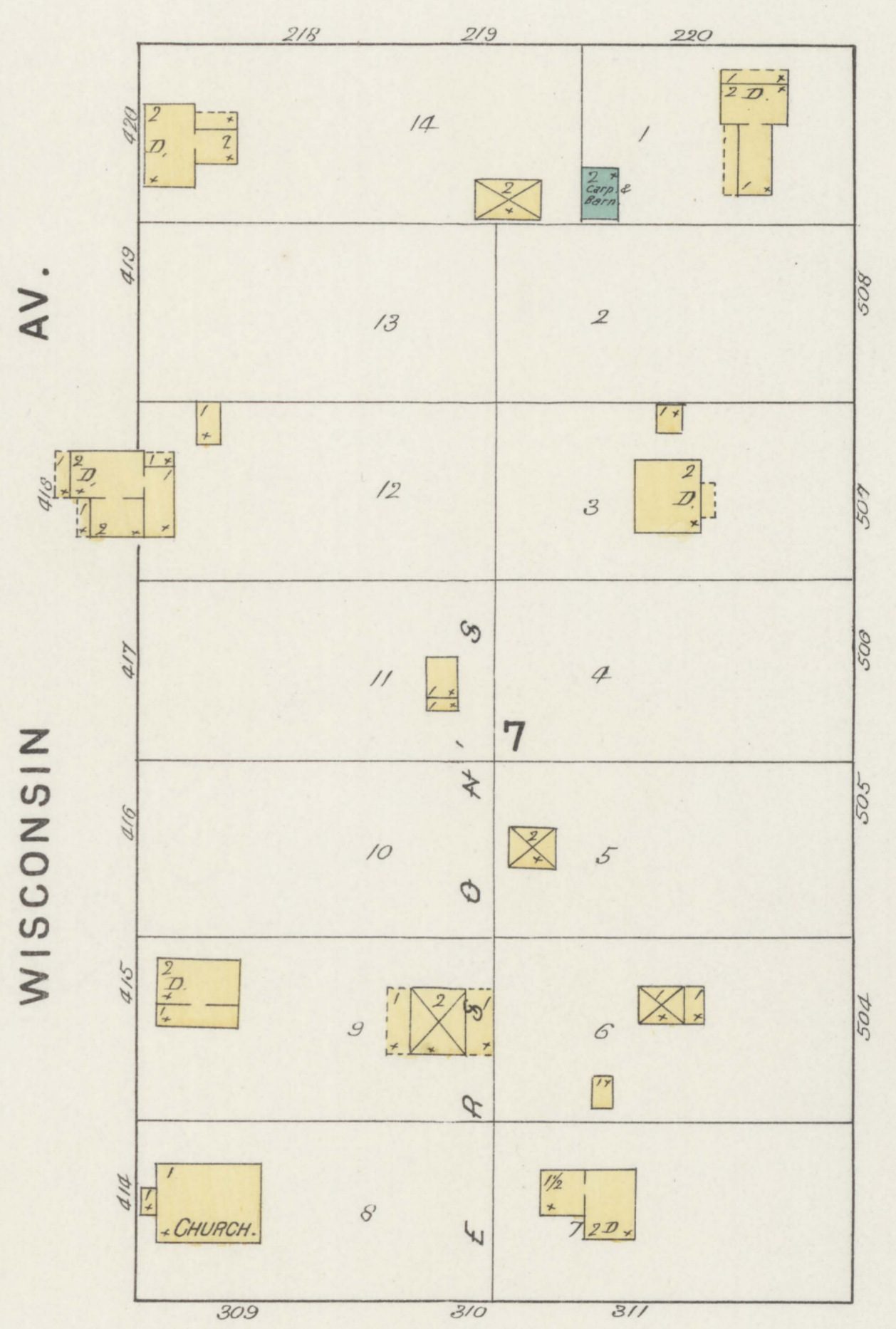
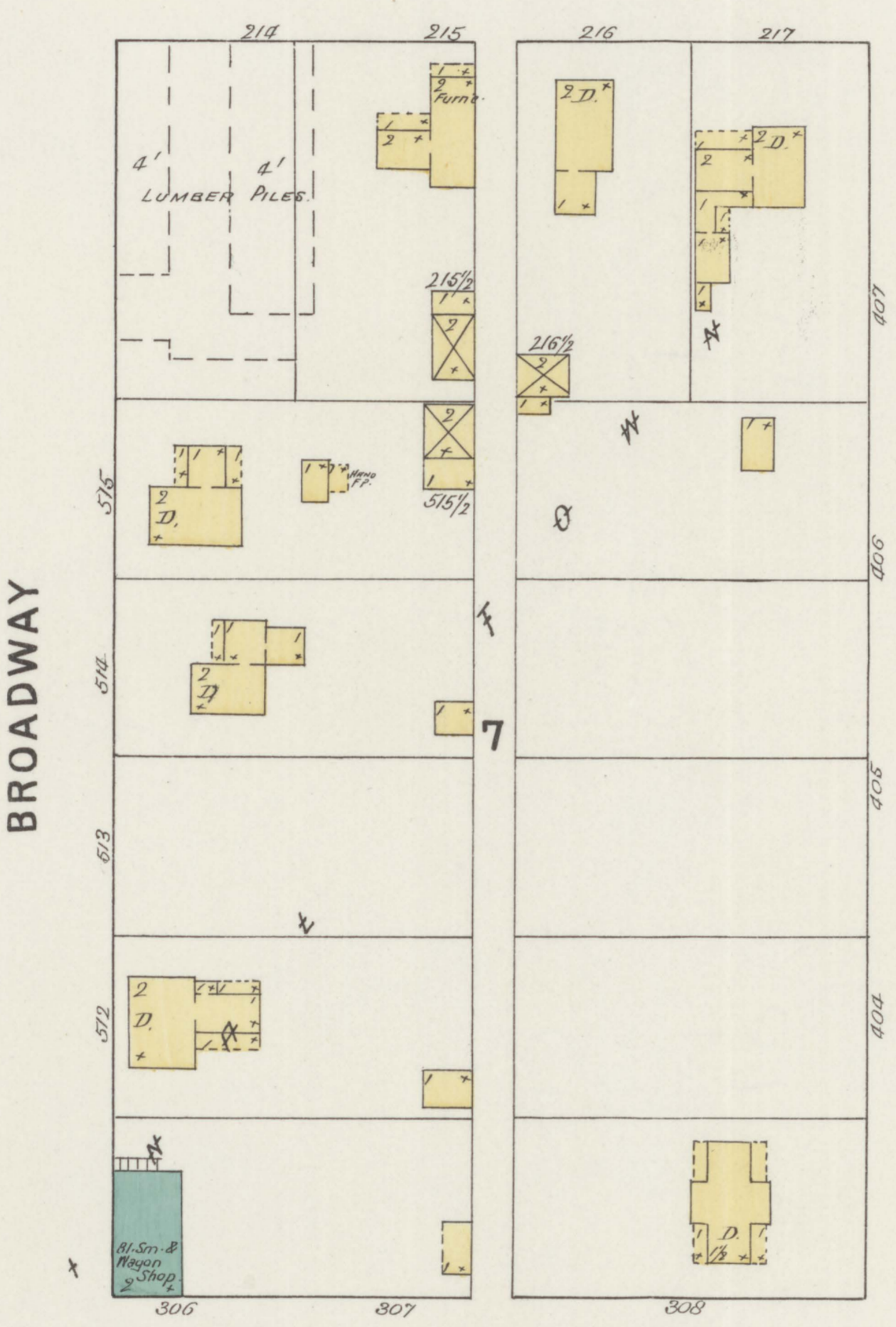
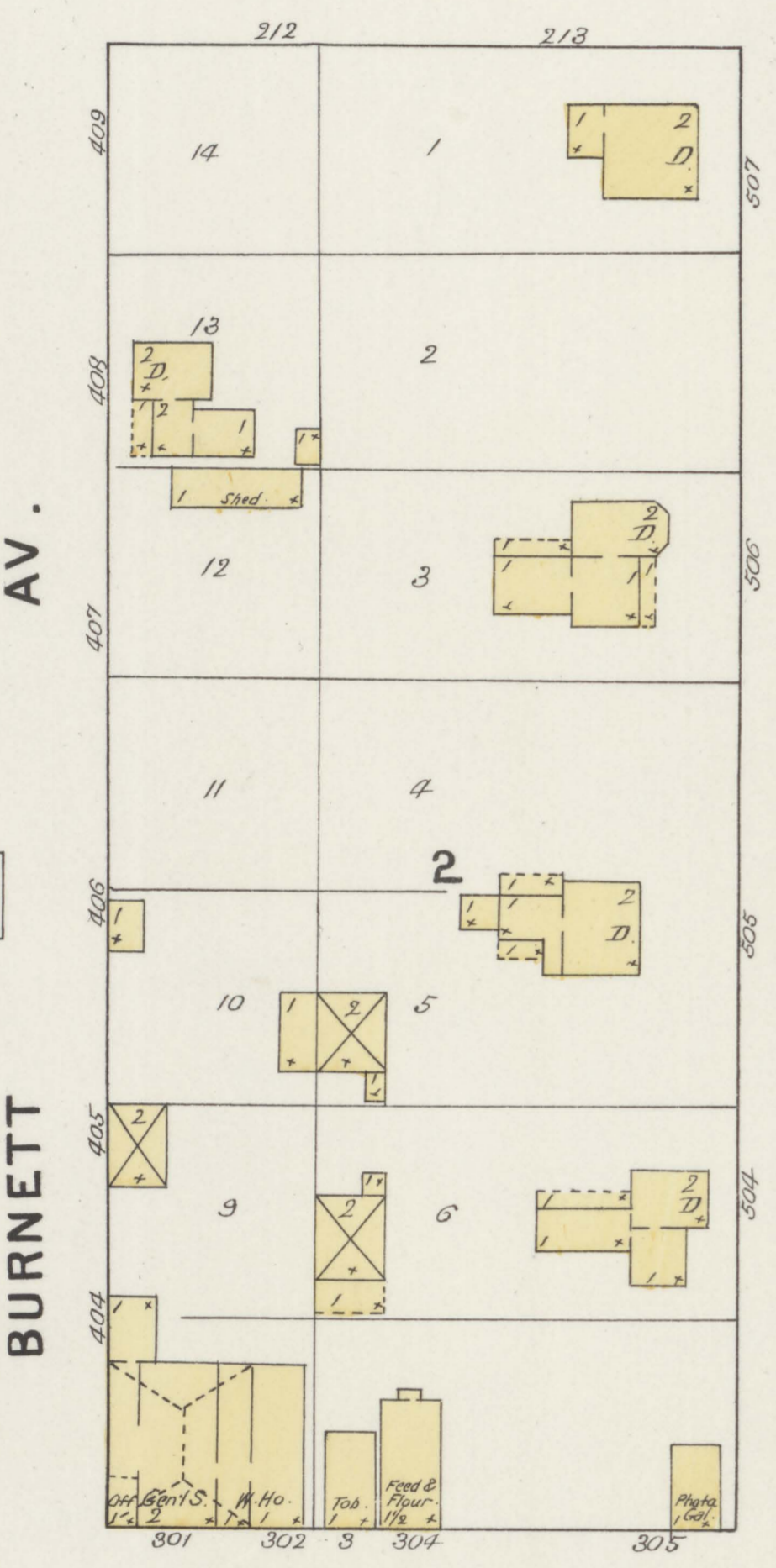


JULY 1894
GRANTSBURGH
 WIS.

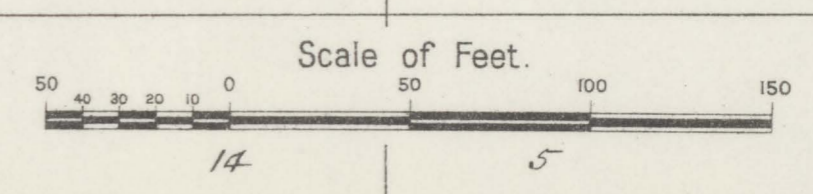
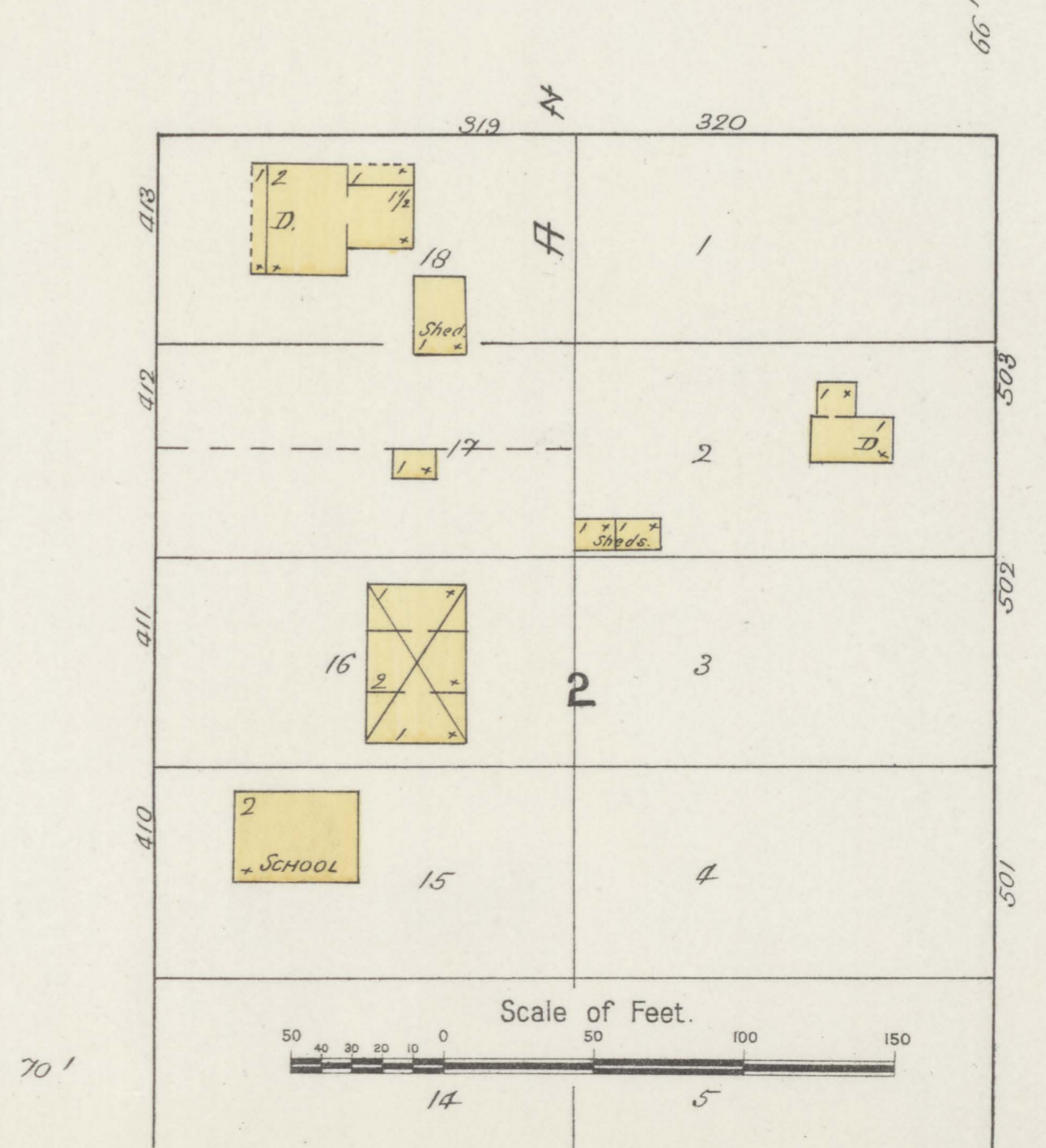
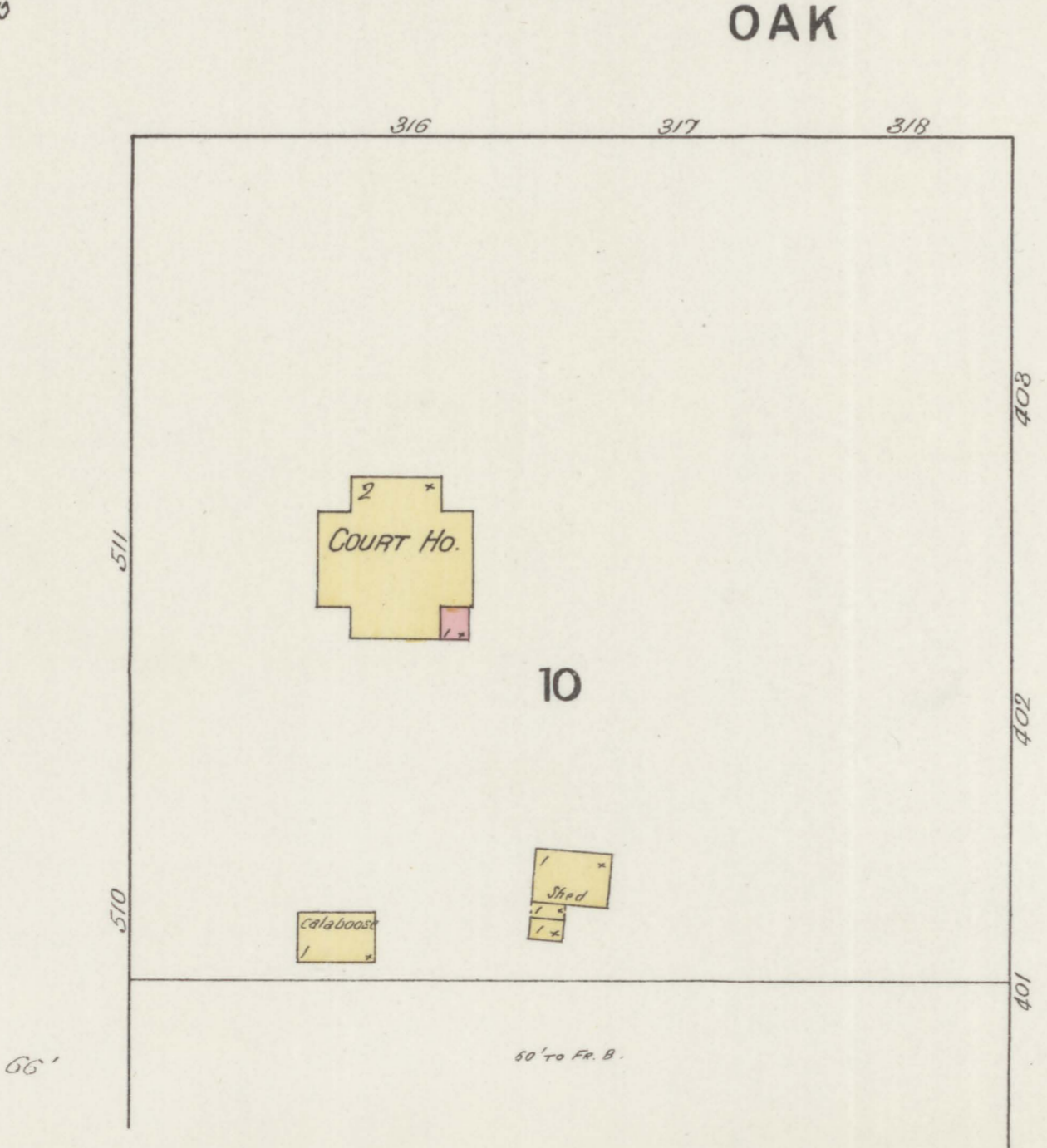
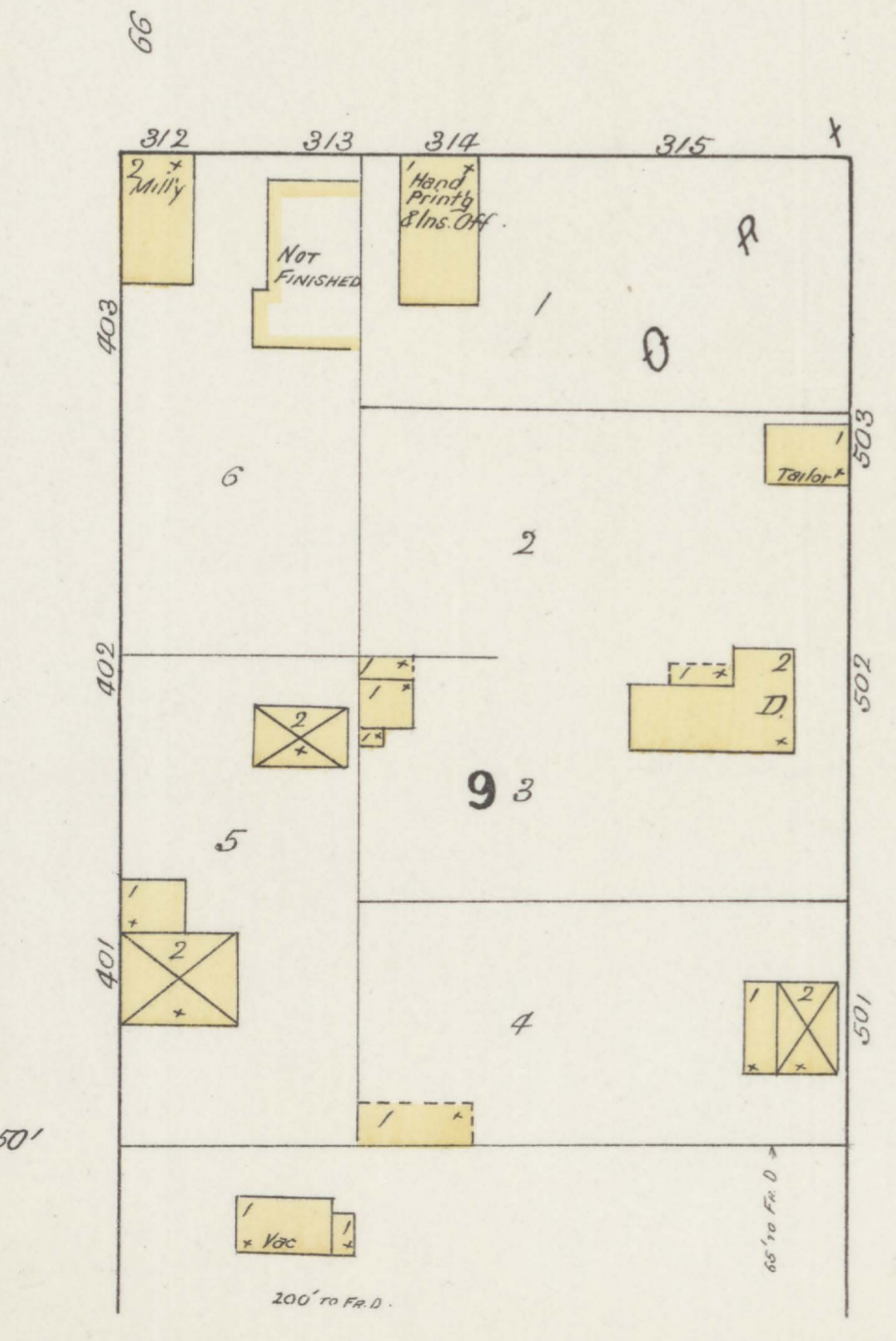
LIBRARY OF CONGRESS
 COPYRIGHT
 JUL 23 1894
 CITY OF WASHINGTON



PINE



OAK



Map Division

L A N D W O O D E N