

Note.
WATER FACILITIES: DIRECT PRESSURE & GRAVITY SYSTEM.
 1 ELBE COMPOUND DUPLEX PUMP CAPY. 12 MILLION GALS. PER 24 HOURS. 1 NORTHINGTON COMPOUND DUPLEX PUMP CAPY. 12 MILLION GALS. PER 24 HOURS. 2 AUXILIARY PUMPS OPERATED BY ELBE (MILLS & CHRY. UNOBTAINABLE) RESERVOIR ON HILL ABOUT 240' ABOVE LAKE. CAPY. 280,000 GALS. 12 1/2 MILES OF WATER MAINS. 4" 6" 8" & 12" 65 DBL. HYD. GRAVITY PRESSURE IN BUSINESS SECTION. 75 LBS. PER SQ. INCH. DIRECT FIRE PRESSURE 120 LBS. PER SQ. INCH. SUPPLY FROM ARTESIAN WELLS.
FIRE DEPT. VOL. CO. 1 HOSE WAGON. 300' HOSE. 1 H & L TRUCK. 1 2nd CLASS SILSBY STEAMER IN RESERVE. 1 HOSE CART WITH 500' HOSE AT 7TH AND ST. CROIX. METROPOLITAN FIRE ALARM SYSTEM. 3 STATIONS. BELL ALARM.

Lake St. Croix

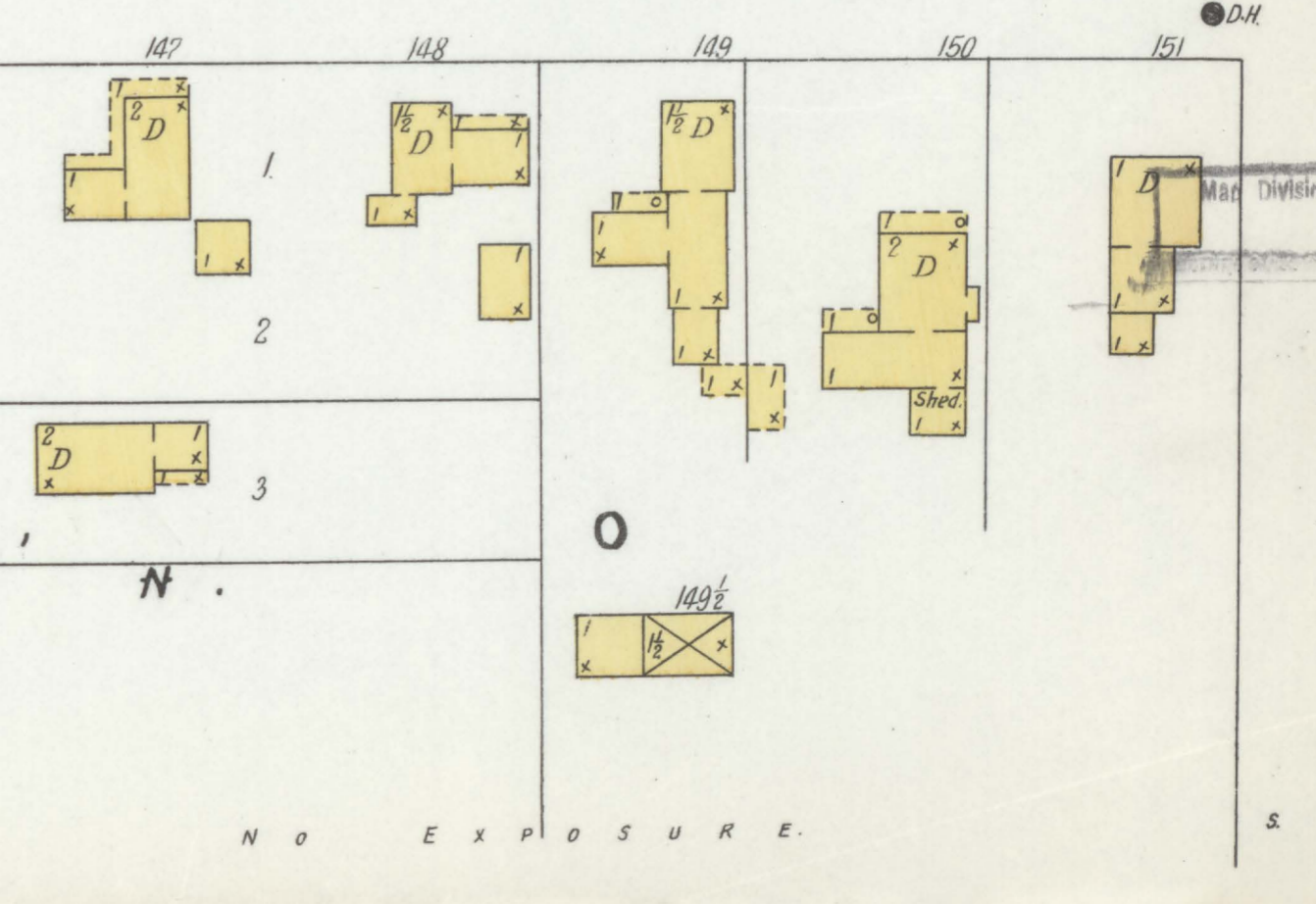
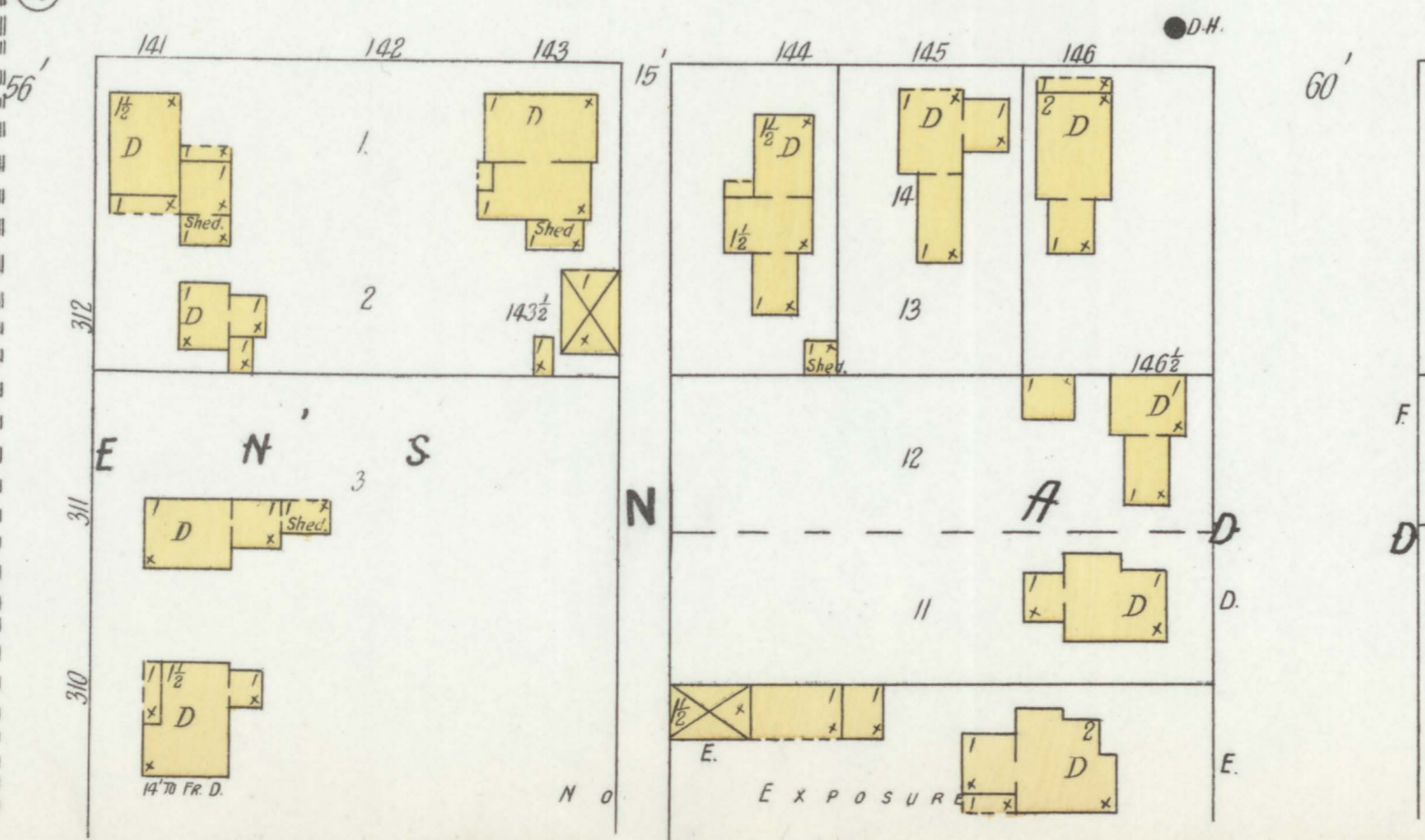
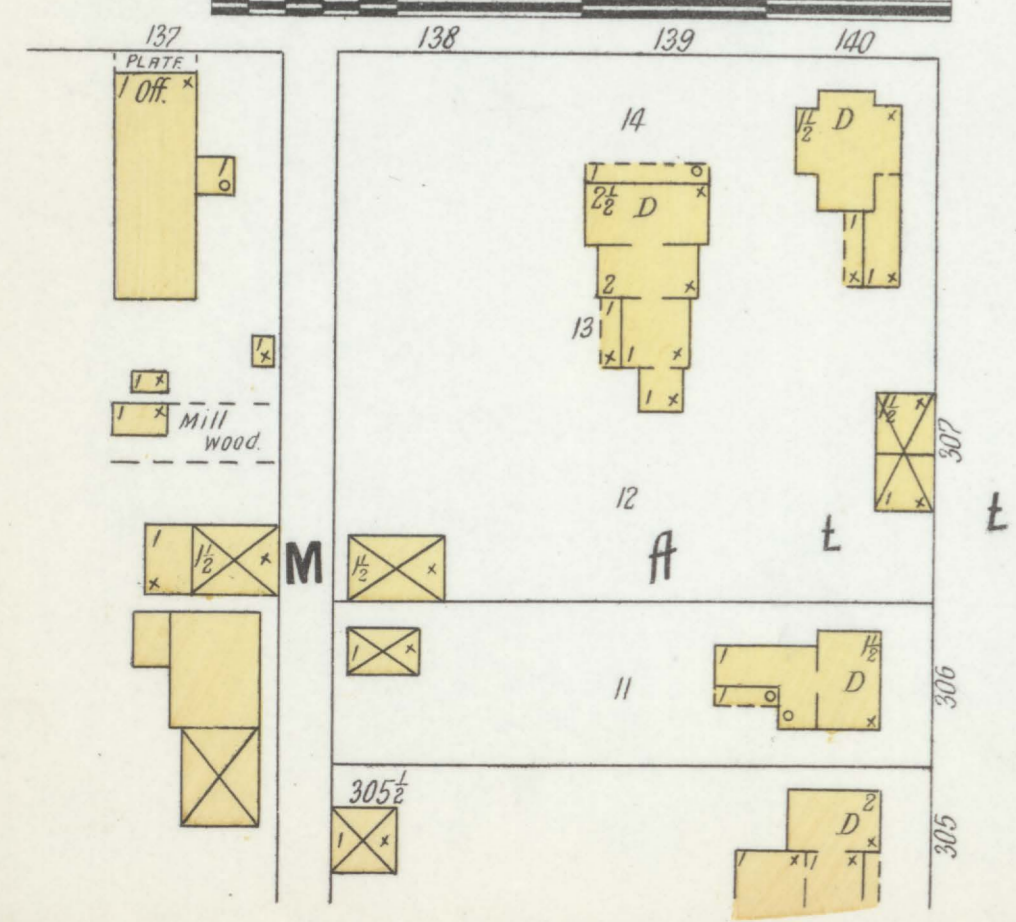
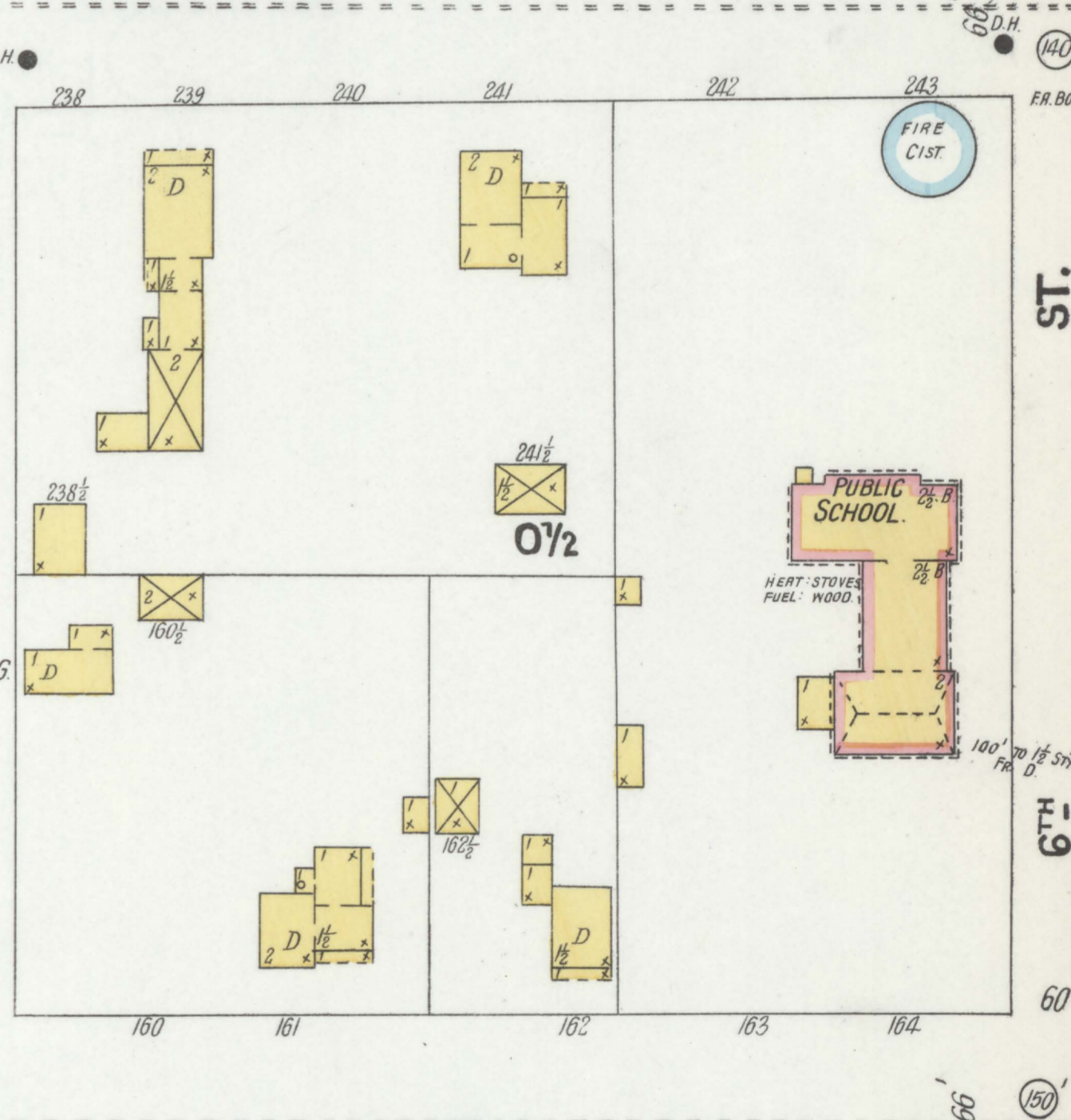
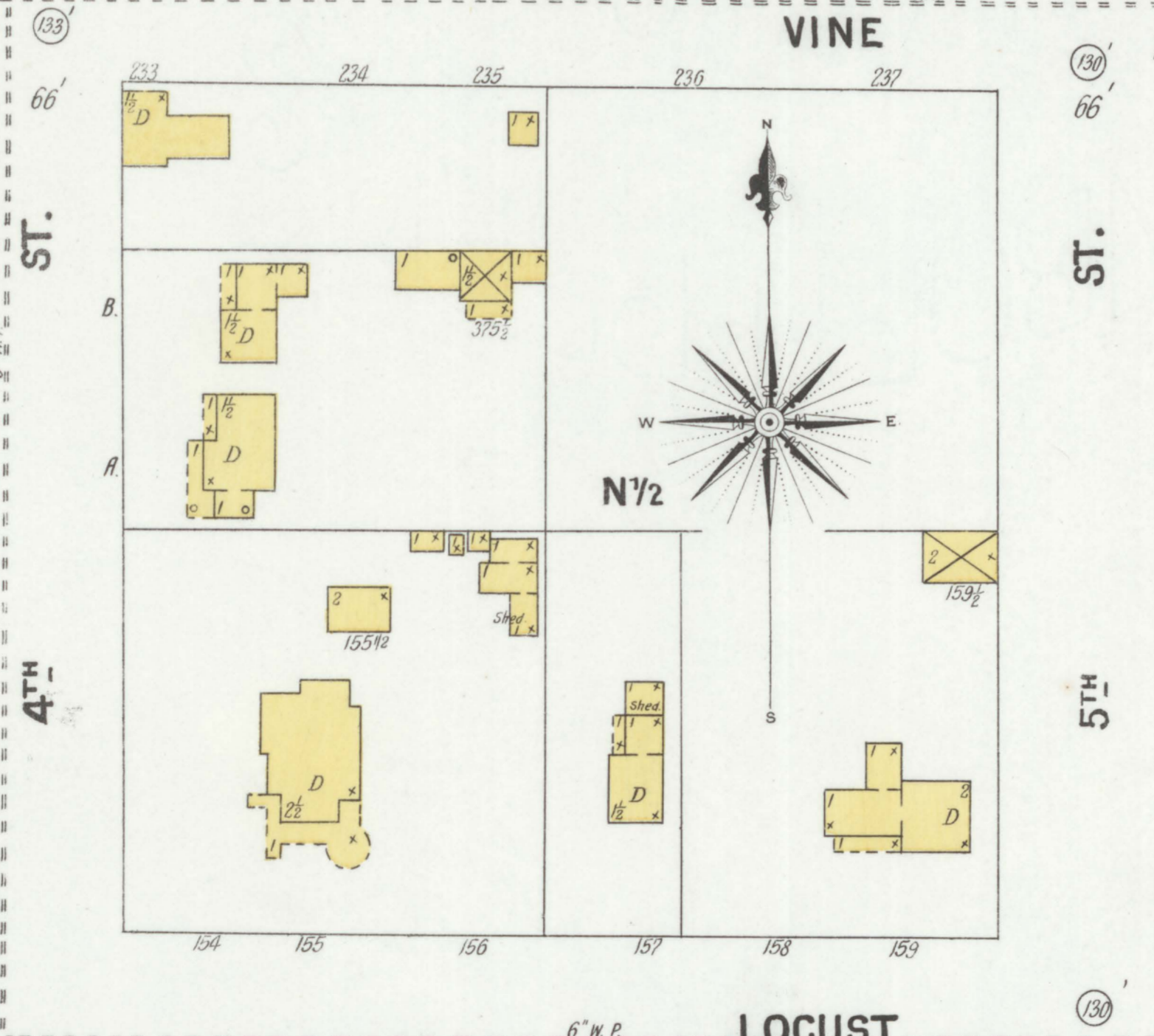
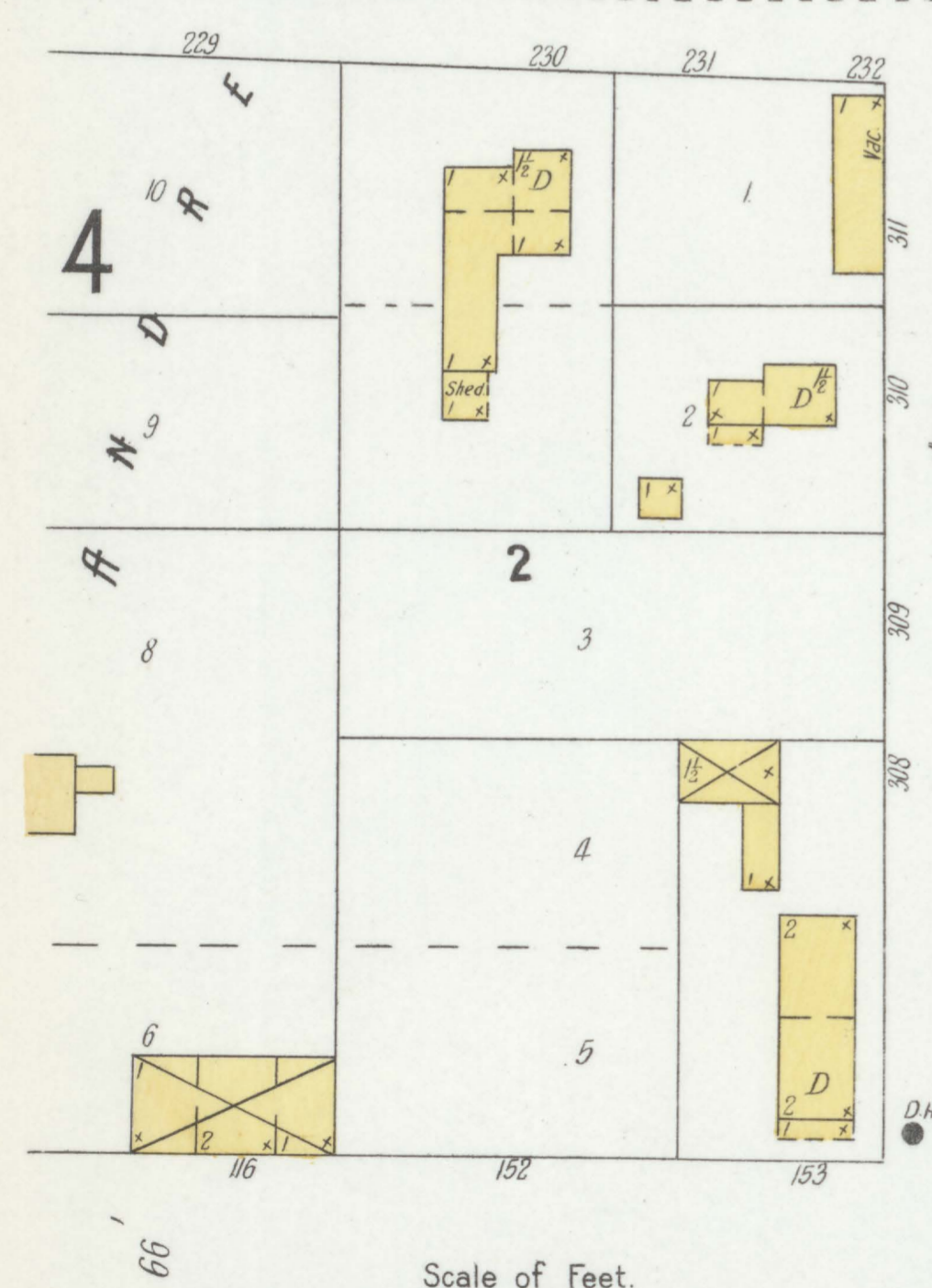
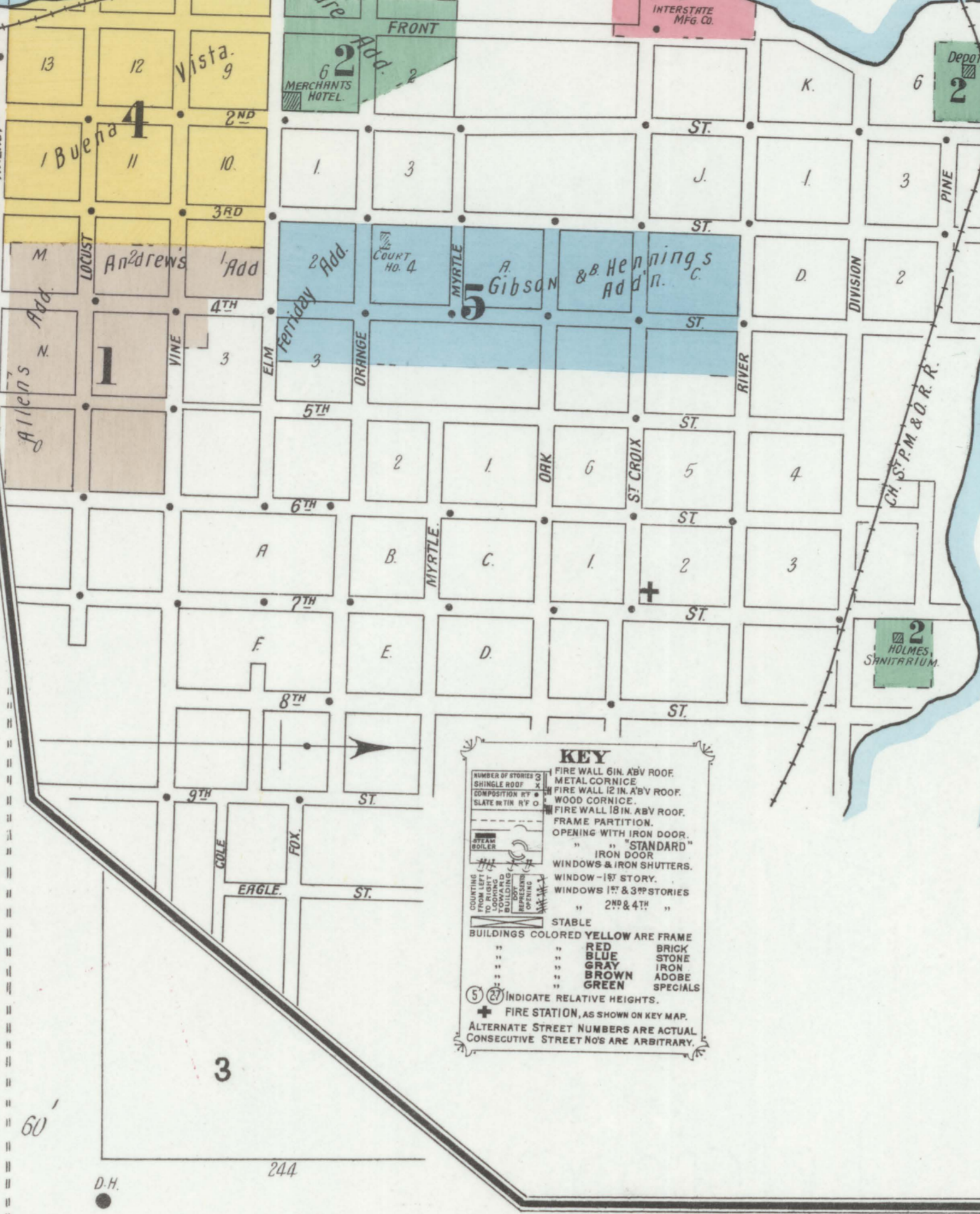
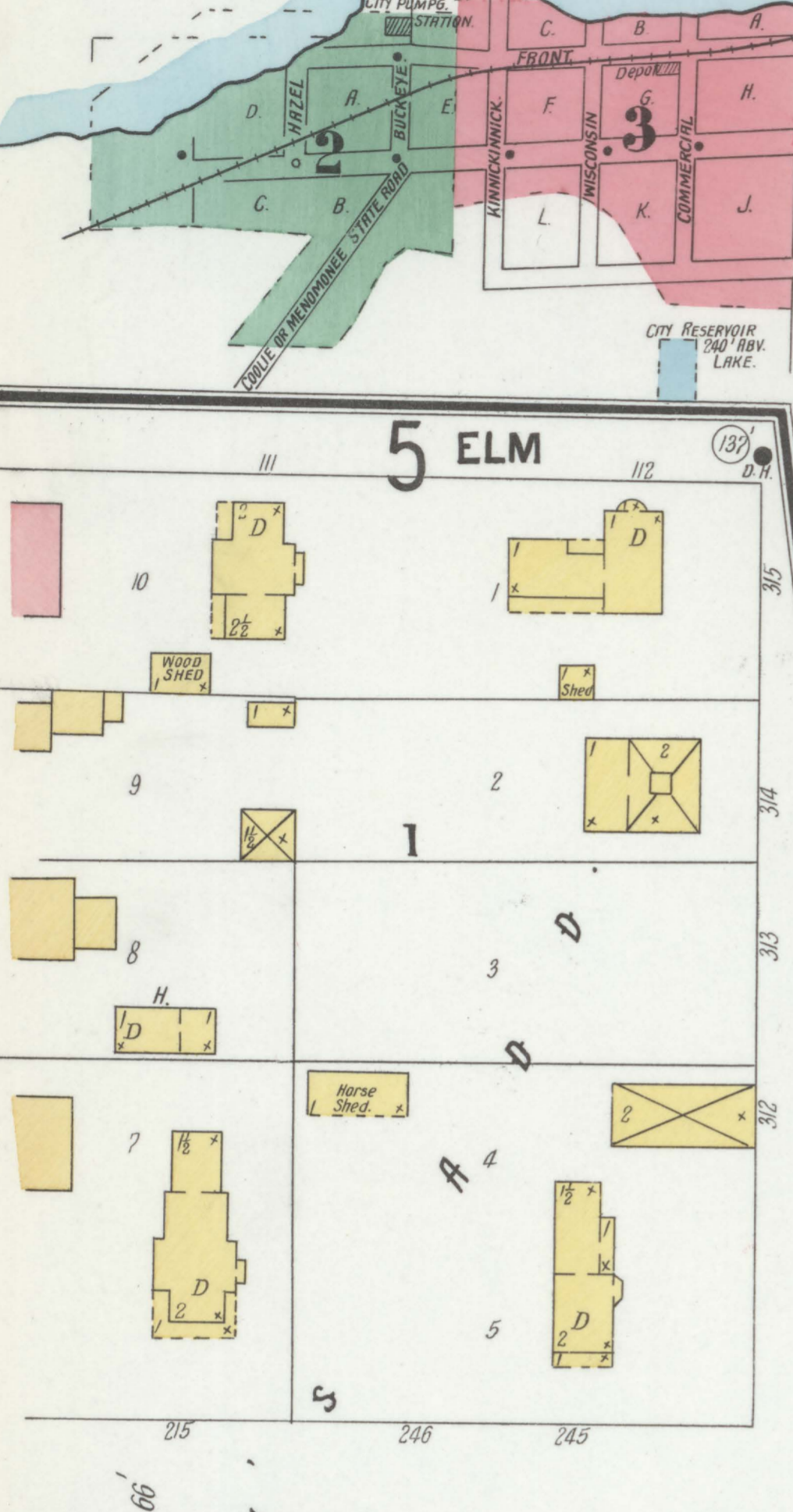
SANBORN - PERRIS MAP CO. LIMITED
 11 Broadway
 NEW YORK
 Population 4000
 1 Steam & No Hand Engines
 2 Independent Hose Carts
 Water Facilities See Note.
 Prevailing Winds N.W.
HUDSON,
 St. Croix, Co. Wis.
 April, 1900.
 SCALE 50 FT. TO AN INCH.
 COPYRIGHT 1900 BY THE SANBORN - PERRIS MAP CO. LIMITED

3812
 6 Sheets
 C. ST. P. M. & O. R. R.
 6 SHOPS.
 1ST
 2ND
 3RD
 4TH
 5TH
 6TH
 7TH
 8TH
 9TH
 10TH
 11TH
 12TH
 13TH
 14TH
 15TH
 16TH
 17TH
 18TH
 19TH
 20TH
 21ST
 22ND
 23RD
 24TH
 25TH
 26TH
 27TH
 28TH
 29TH
 30TH
 31ST
 32ND
 33RD
 34TH
 35TH
 36TH
 37TH
 38TH
 39TH
 40TH
 41ST
 42ND
 43RD
 44TH
 45TH
 46TH
 47TH
 48TH
 49TH
 50TH
 51ST
 52ND
 53RD
 54TH
 55TH
 56TH
 57TH
 58TH
 59TH
 60TH
 61ST
 62ND
 63RD
 64TH
 65TH
 66TH
 67TH
 68TH
 69TH
 70TH
 71ST
 72ND
 73RD
 74TH
 75TH
 76TH
 77TH
 78TH
 79TH
 80TH
 81ST
 82ND
 83RD
 84TH
 85TH
 86TH
 87TH
 88TH
 89TH
 90TH
 91ST
 92ND
 93RD
 94TH
 95TH
 96TH
 97TH
 98TH
 99TH
 100TH

6720 TWO COPIES RECEIVED,
 Library of Congress,
 Office of the
JUN 15 1900
 Register of Copyrights,
 D12428-1
 JUN 15 1900
INDEX.

SPECIALS.		H	
Armory,	4	Hall, M. B., Feed-mill,	2
Artesian Brewery,	2	High School,	5
		Holstein, A. & J., Brewery,	2
		Holmes Sanitarium,	2
		Hosford, G., Elevator,	3
		Hudson Cold Storage & W. H. Co., 3 & 4	
		" Feed-mill,	2
		I	
		Interstate Manufacturing Co.,	3
		M	
		Merchants Hotel,	2
		Methodist Episcopal Church,	4
		N	
		Northern Grain Co.,	6
		Norwegian Lutheran Church,	5
		P	
		Presbyterian Church,	5
		S	
		St. Croix Hotel,	2
		" John's Episcopal Church,	5
		Second Ward Public School,	1
		Standard Oil Co.,	3
		Swedish Lutheran Church,	5
		T	
		Town Hall,	4
		W	
		Wilroth, I. D., Sanitarium,	2
		" Ward School,	3
		Wisconsin Lumber and Bld'g Co.,	3

KEY
 FIRE WALL ON ABY ROOF.
 METAL CORNICE.
 FIRE WALL IN ABY ROOF.
 WOOD CORNICE.
 FIRE WALL IN ABY ROOF.
 FRAME PARTITION.
 OPENING WITH IRON DOOR.
 IRON DOOR.
 IRON SHUTTERS.
 WINDOWS & IRON SHUTTERS.
 WINDOW - 1ST STORY.
 WINDOWS 1ST & 2ND STORIES.
 " 2ND & 4TH "
 STABLE.
 BUILDINGS COLORED YELLOW ARE FRAME BRICK.
 RED BRICK.
 BLUE STONE.
 GRAY IRON.
 BROWN ADOBE.
 GREEN SPECIALS.
 (S) INDICATE RELATIVE HEIGHTS.
 (+) FIRE STATION, AS SHOWN ON KEY MAP.
 ALTERNATE STREET NUMBERS ARE ACTUAL CONSECUTIVE STREET NOS ARE ARBITRARY.



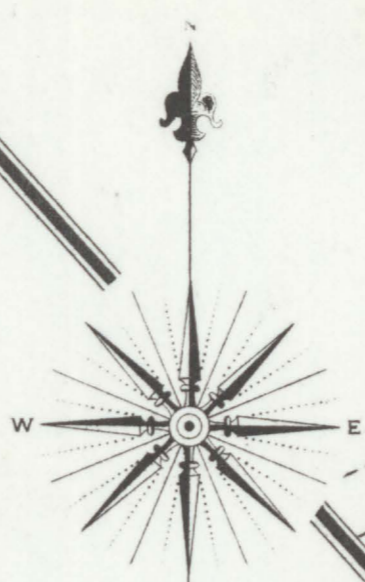
Scale of Feet.
 50 40 30 20 10 0 50 100 150

NO EXPOSURE.

HOLMES SANITARIUM - DR. I. D. WILTROUT PROP'R.

HEAT: STEAM. FUEL: WOOD. LIGHTS: INC. ELEC. CITY WATER. BUFFALO DUPLEX P. P. 6" X 6" X 6". TWO 500 GAL. TANKS. 100' ELEV. TWO 2" V. P. WITH 50' HOSE ATT'D TO BR. ON EACH FL. & ON ROOF.

APRIL 1900 HUDSON WIS.

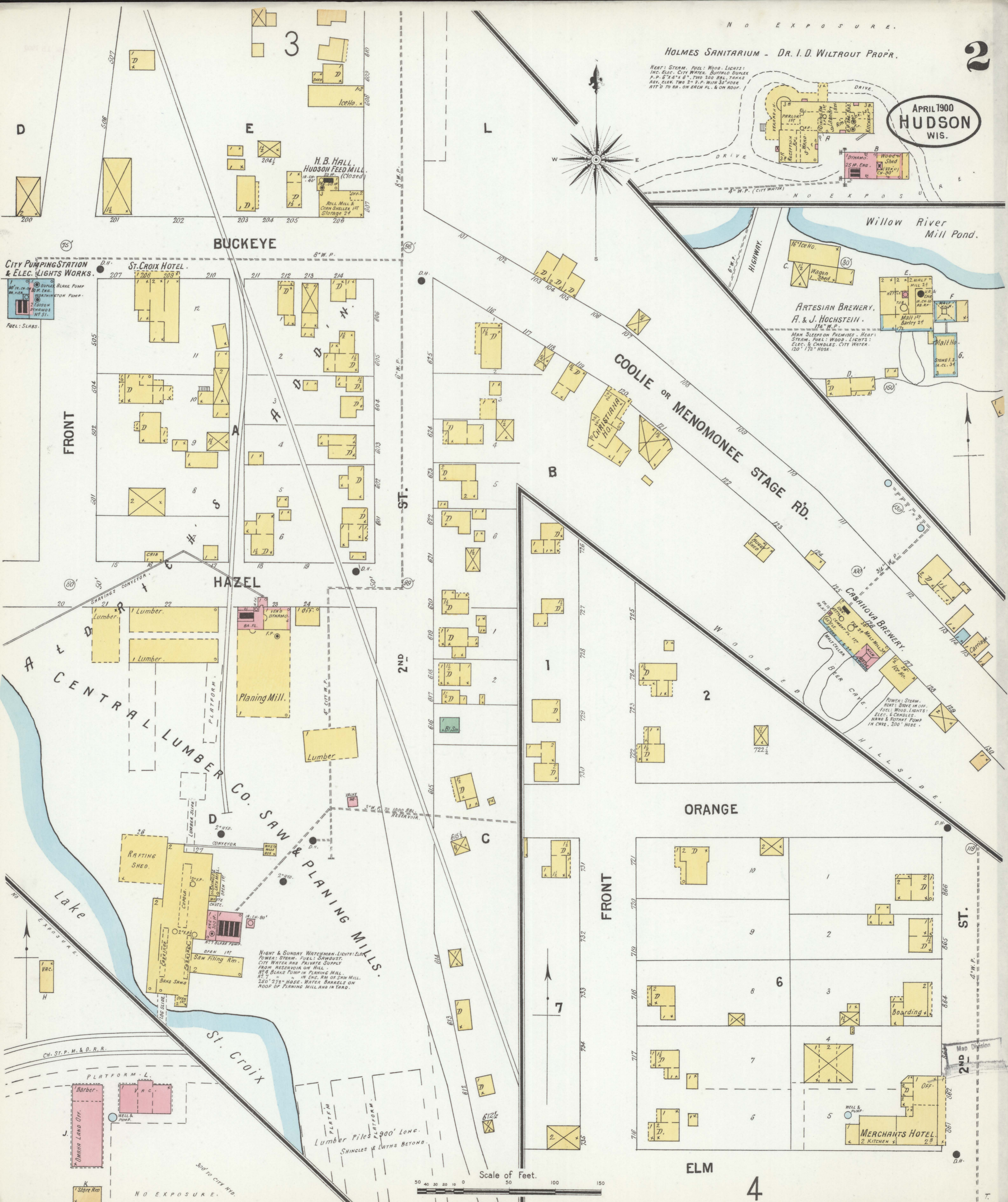


Willow River Mill Pond.

ARTESIAN BREWERY, A. & J. HOCHSTEIN. 17 1/2" W.P. MAIN SLEEPS ON PREMISES. HEAT: STEAM. FUEL: WOOD. LIGHTS: ELEC. & CANDLES. CITY WATER. 120' 1 1/2" HOSE.

CASANOVA BREWERY. POWER: STEAM. HEAT: STEAM IN OFF. FUEL: WOOD. LIGHTS: ELEC. & CANDLES. HAND & ROTARY PUMP IN CHIEF. 200' HOSE.

MERCHANTS HOTEL. 2 KITCHEN.

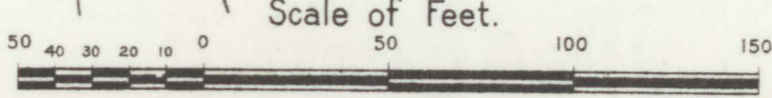


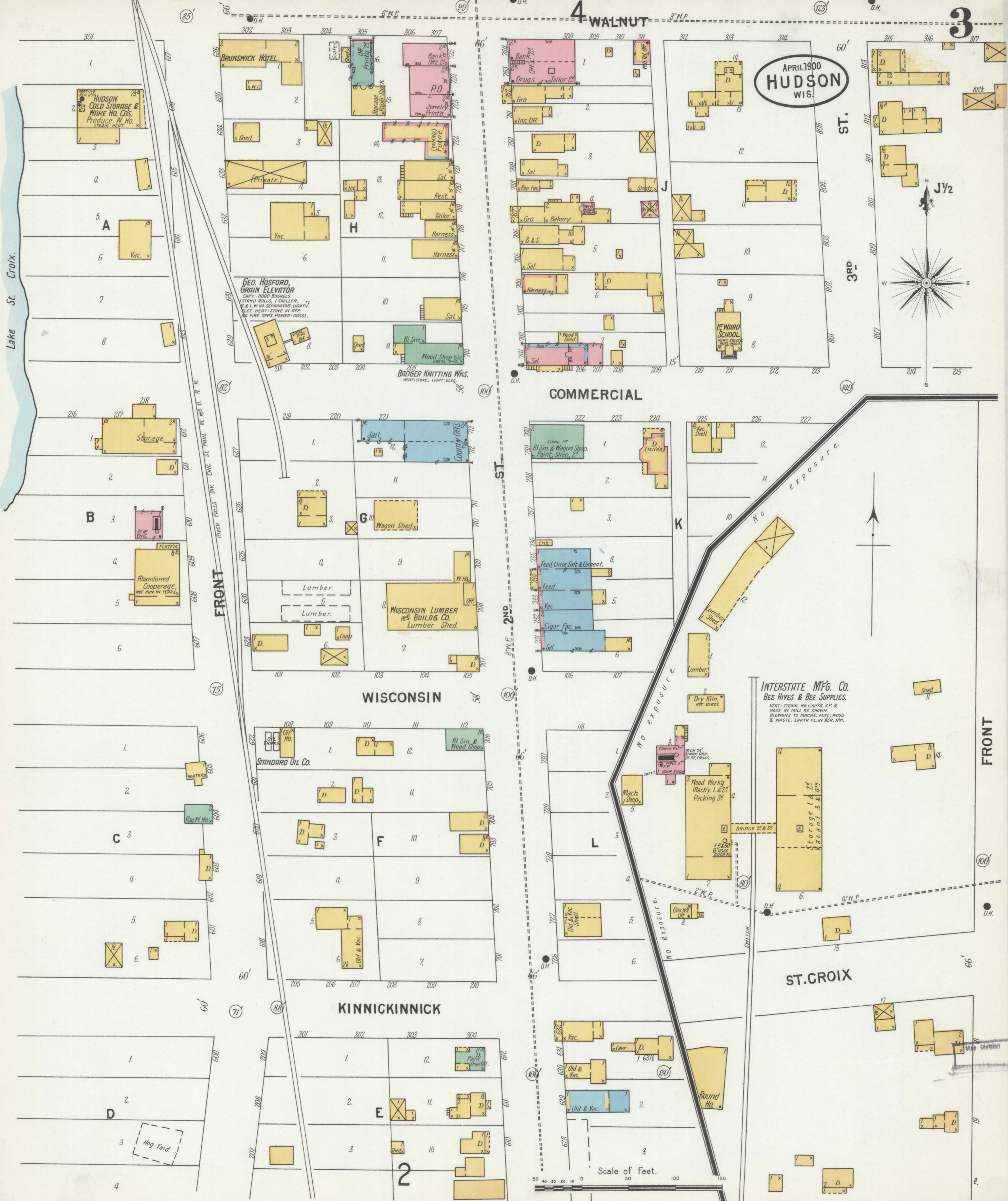
CITY PUMPING STATION & ELEC. LIGHTS WORKS. 1. DUPLEX BLAKE PUMP. 2. 2" V. P. CH. 50' WORTHINGTON PUMP. FUEL: SLABS.

NIGHT & SUNDAY WATCHMAN. LIGHTS: ELEC. POWER: STEAM. FUEL: SAWDUST. CITY WATER AND PRIVATE SUPPLY FROM RESERVOIR ON HILL. 100' BLAKE PUMP IN PLANING MILL. 250' 2 1/2" HOSE. WATER BARRELS ON ROOF OF PLANING MILL AND IN YARD.

Lumber Piles 900' Long. SHINGLES & LATHS BEYOND.

Scale of Feet.





APRIL 1900
HUDSON
WIS.

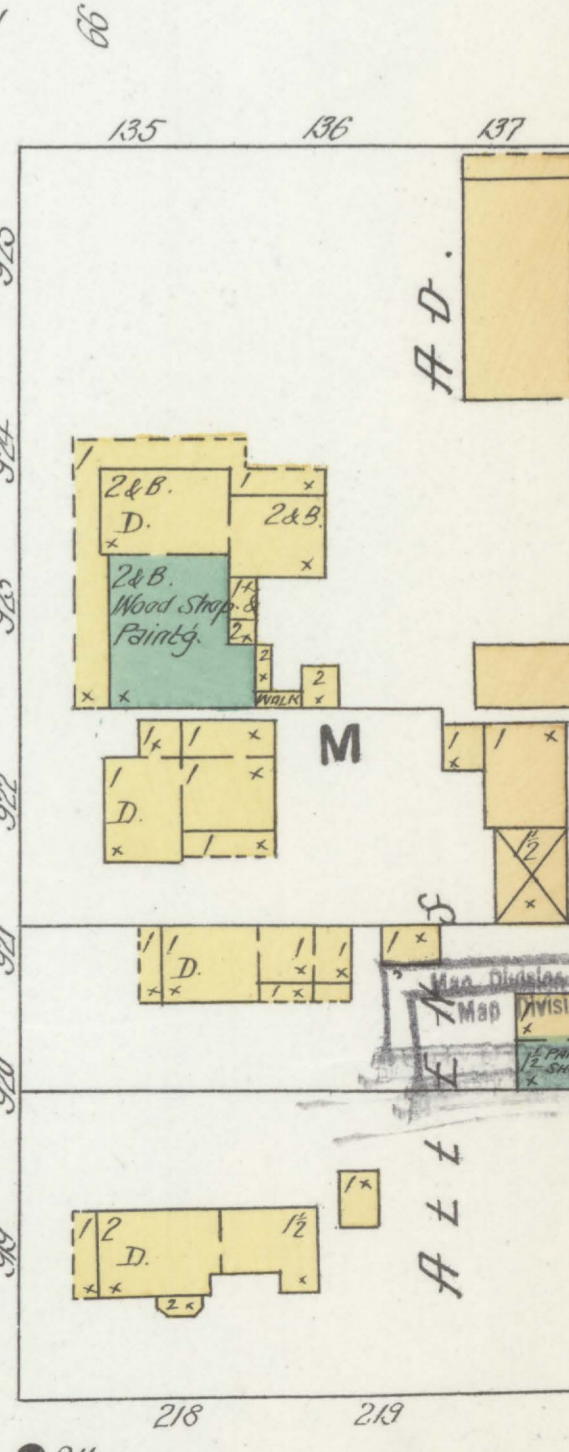
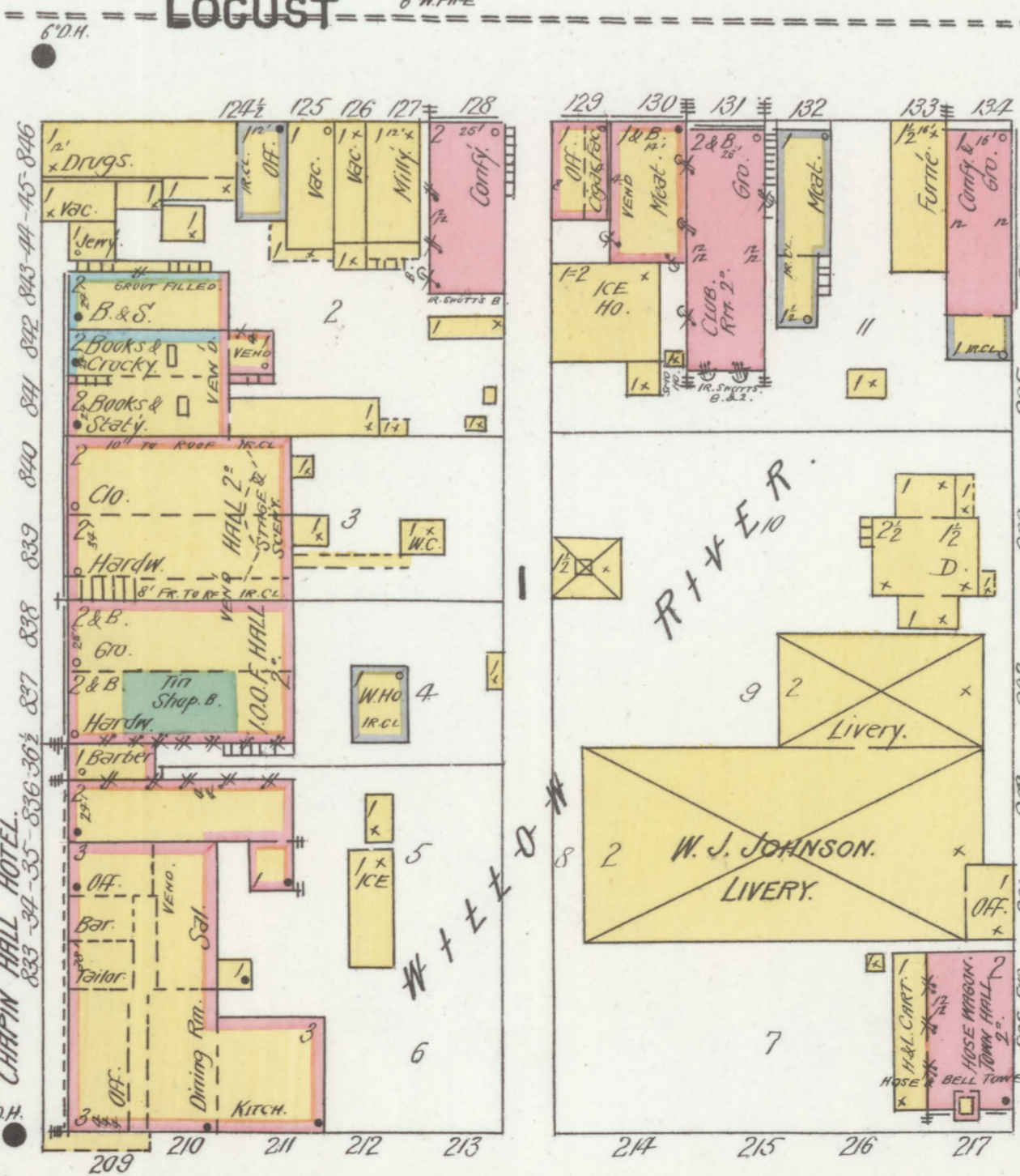
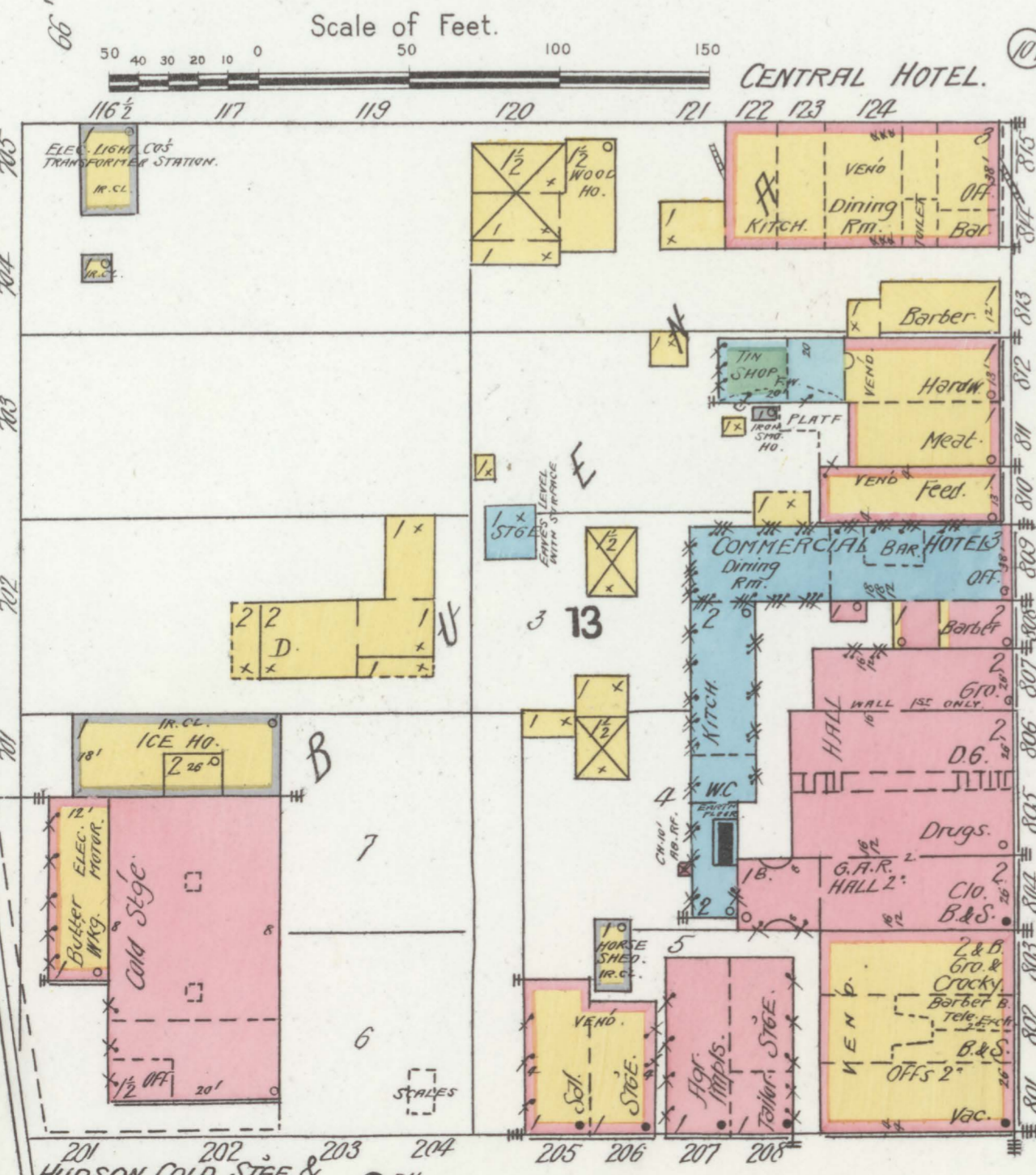
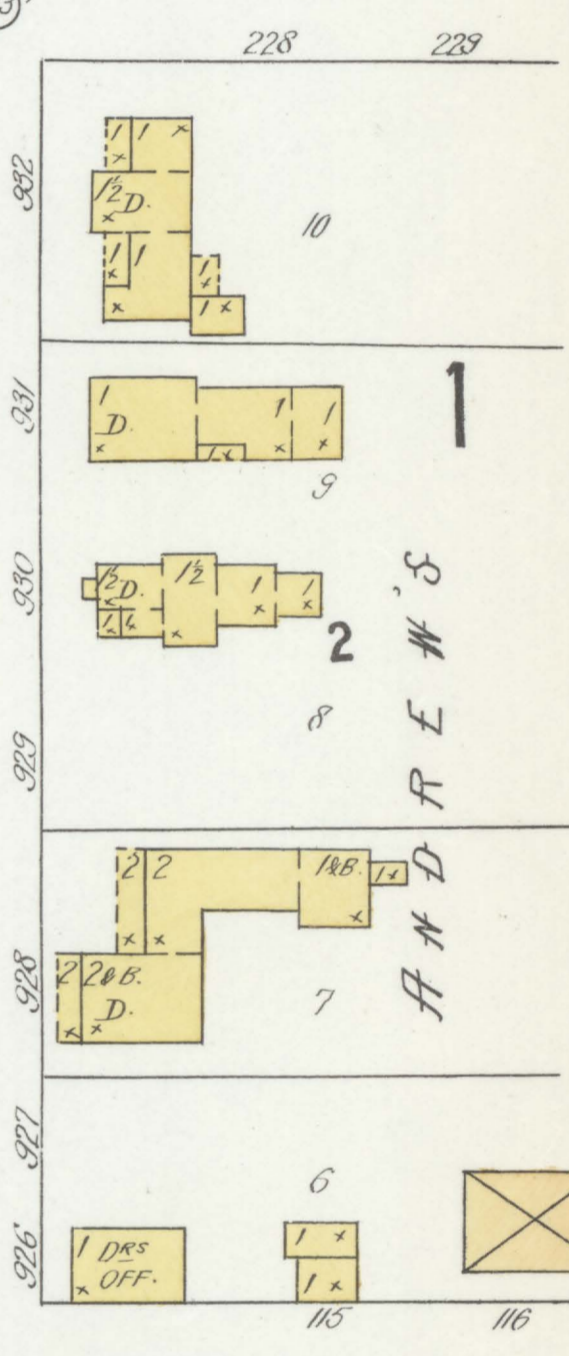
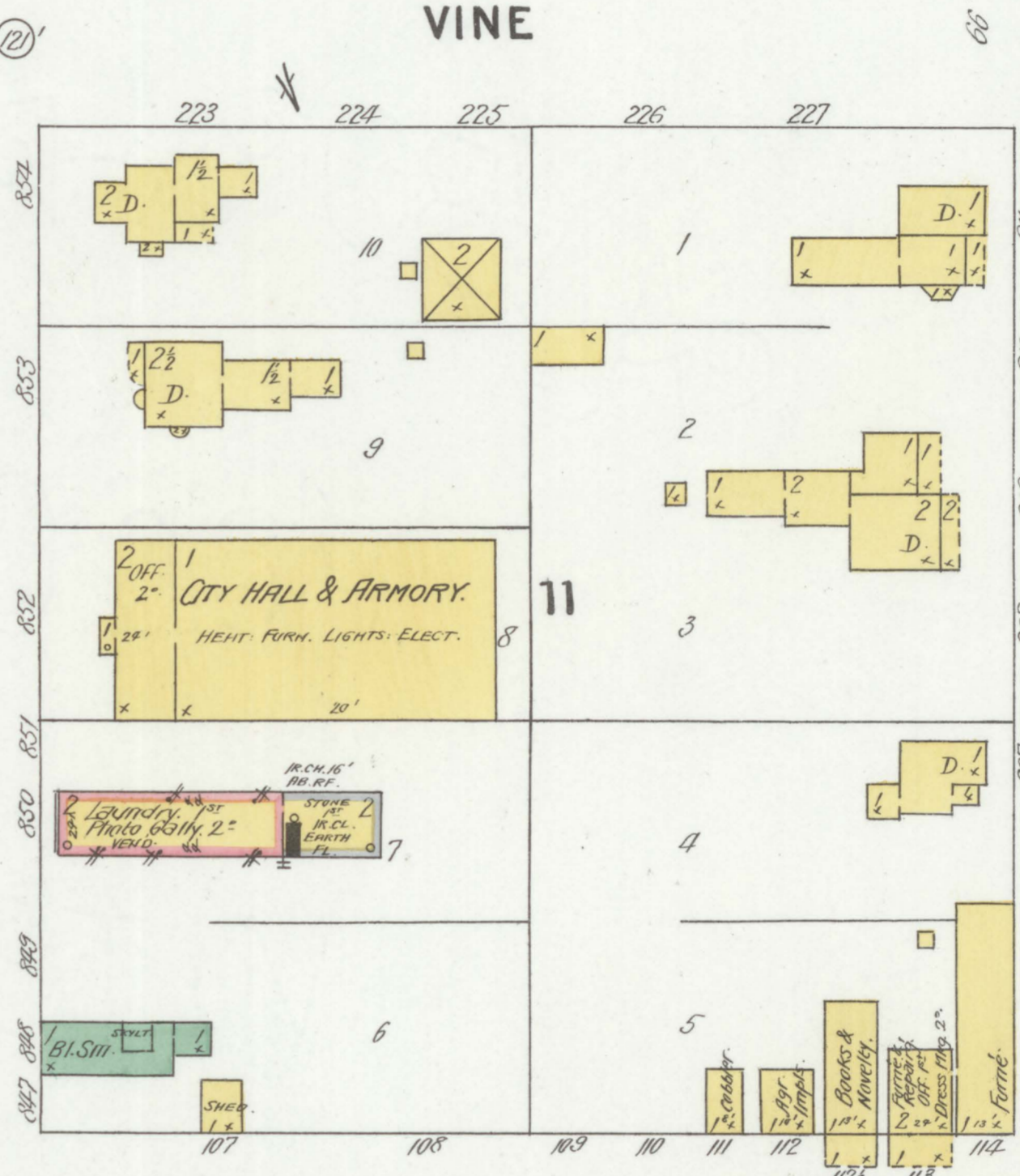
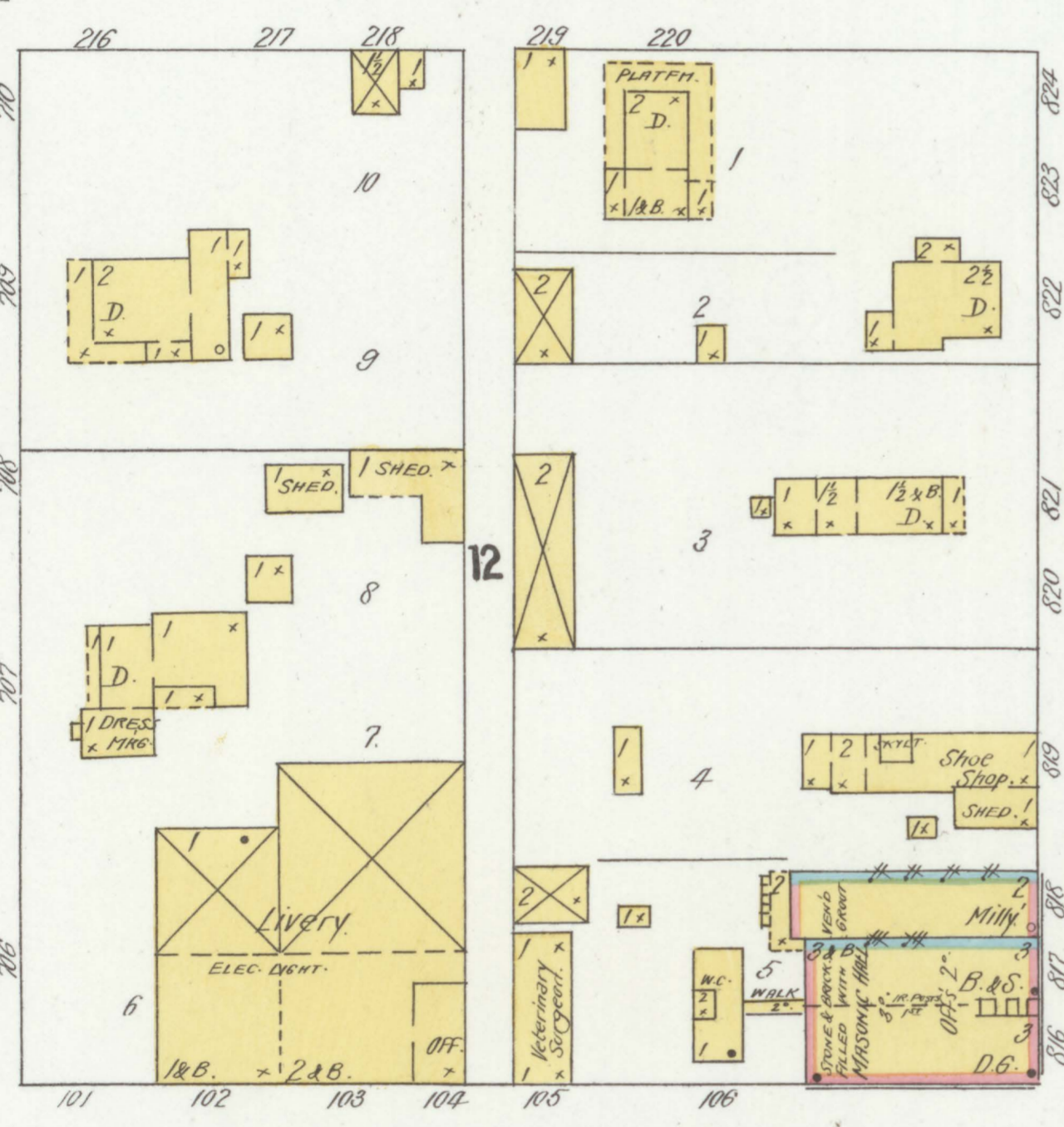
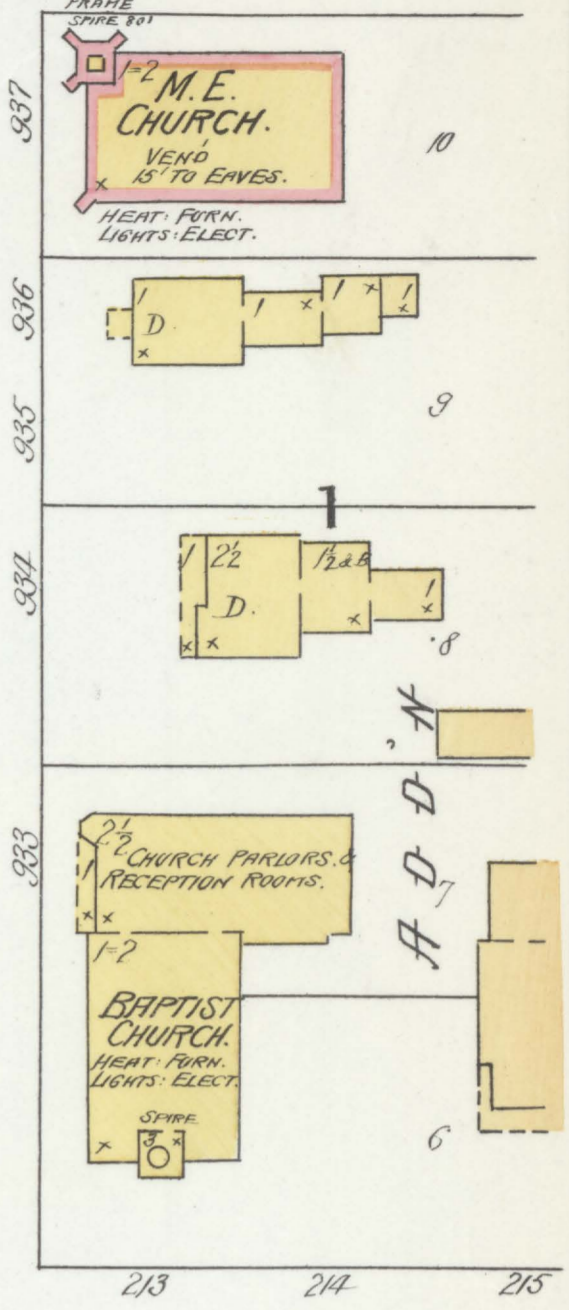
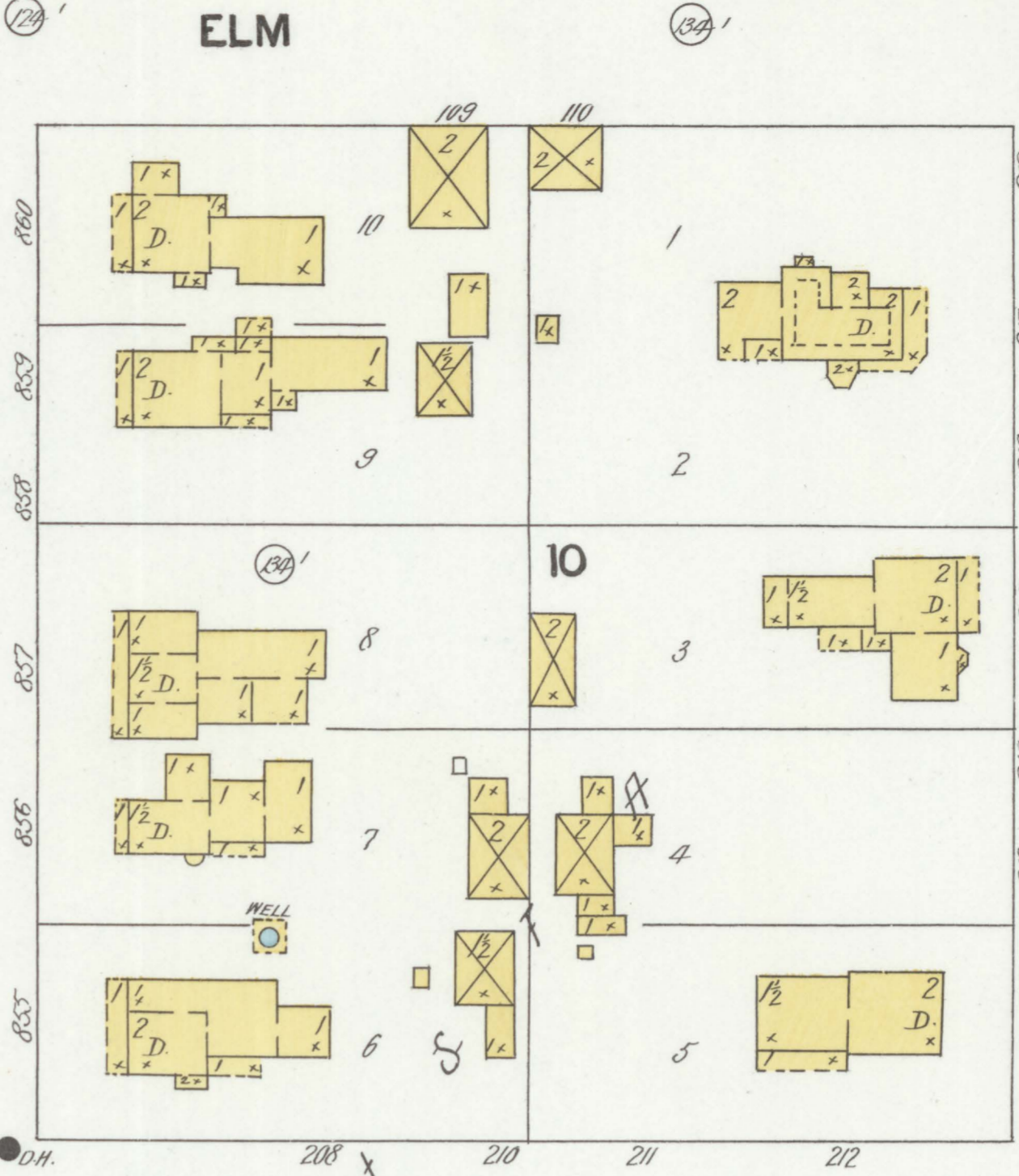
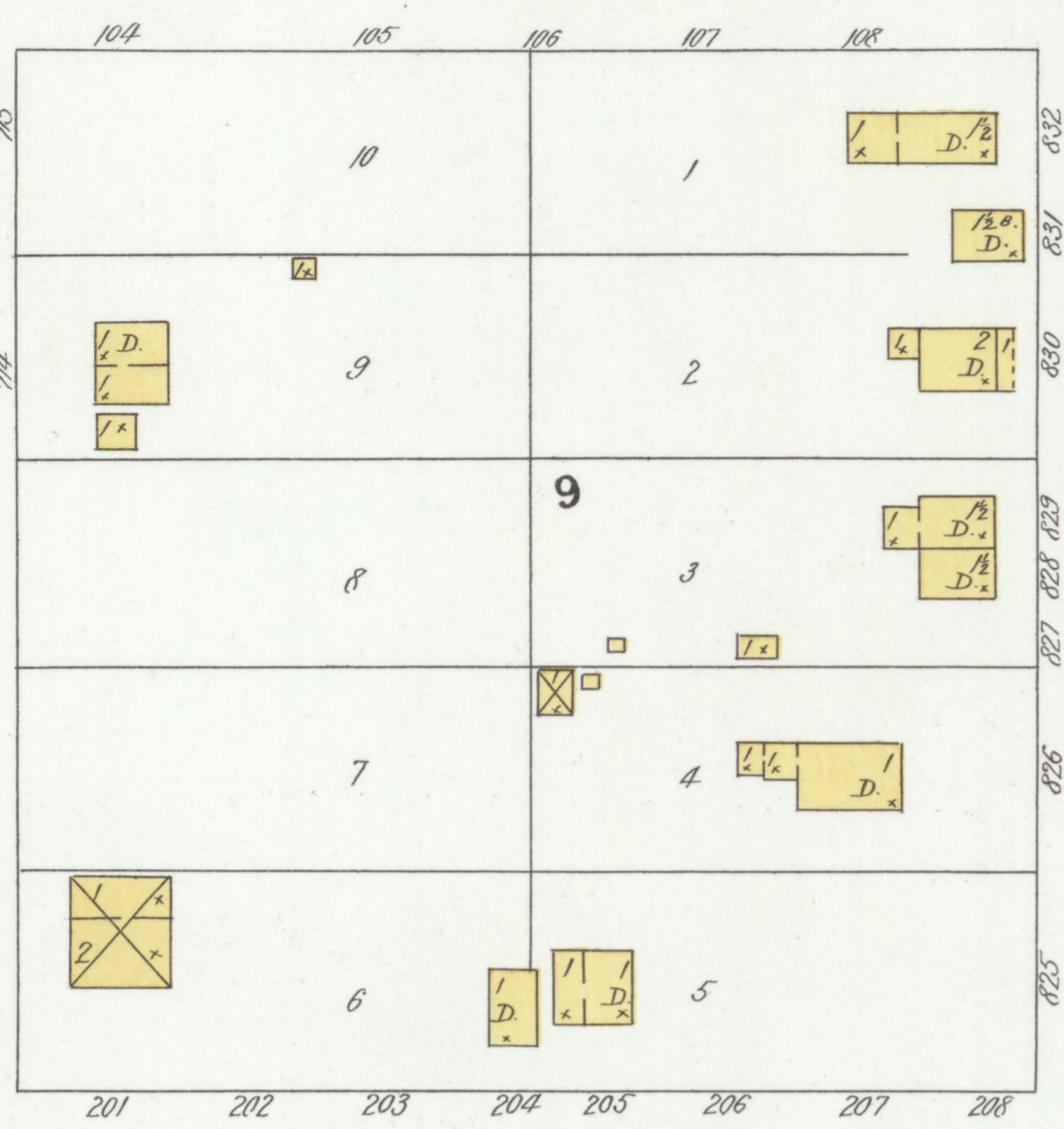
COMMERCIAL

WISCONSIN

KINNICKINNICK

INTERSTATE MFG. CO.
BEE HIVES & BEE SUPPLIES.
HEAT: STEAM, NO LIGHTS. V.P. &
HOSE IN MILL AS SHOWN.
BLOWERS TO MATCH; FUEL: WOOD
& WASTE. EARTH FL. IN BLK. RM.

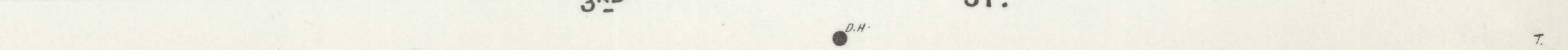
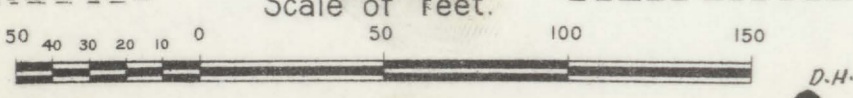
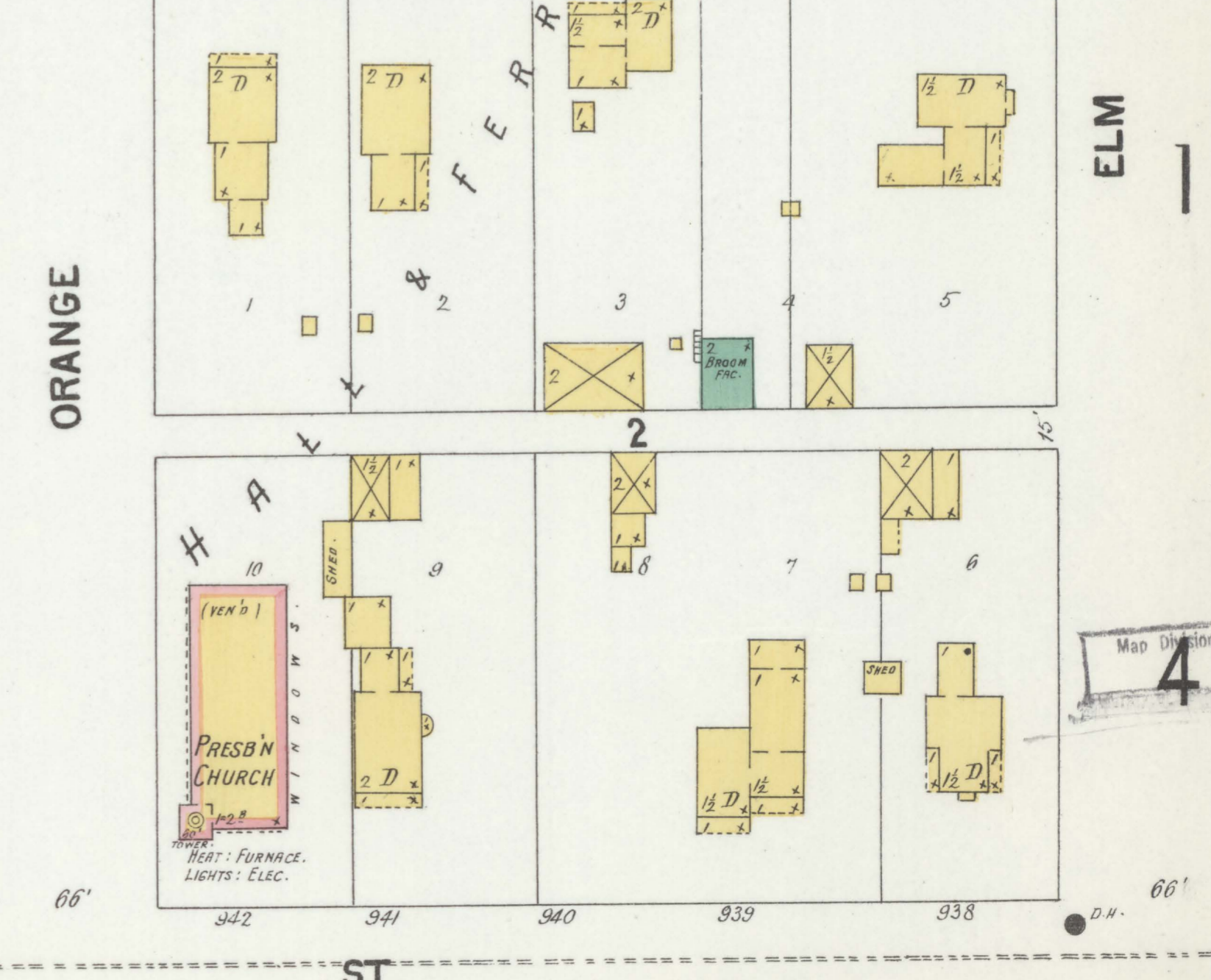
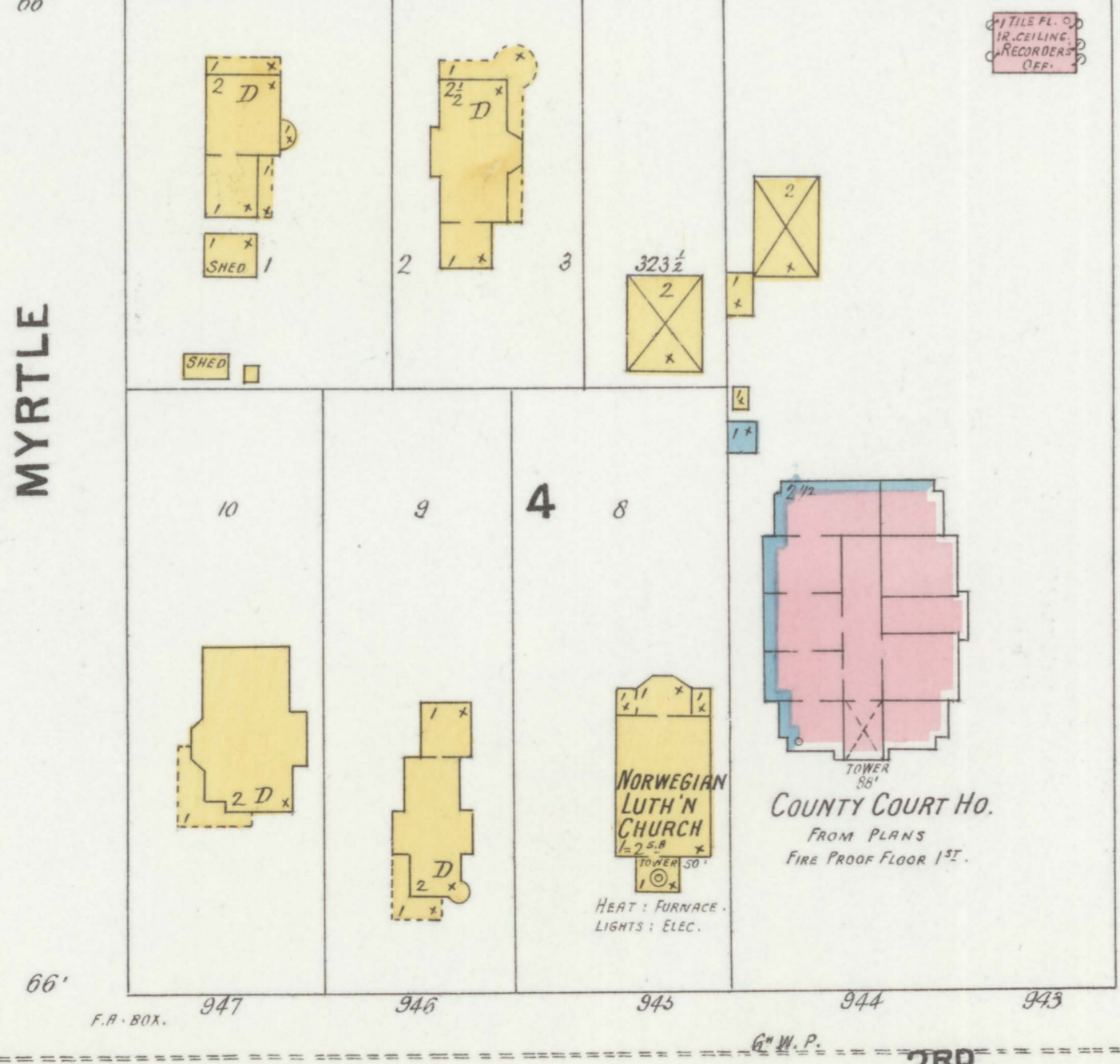
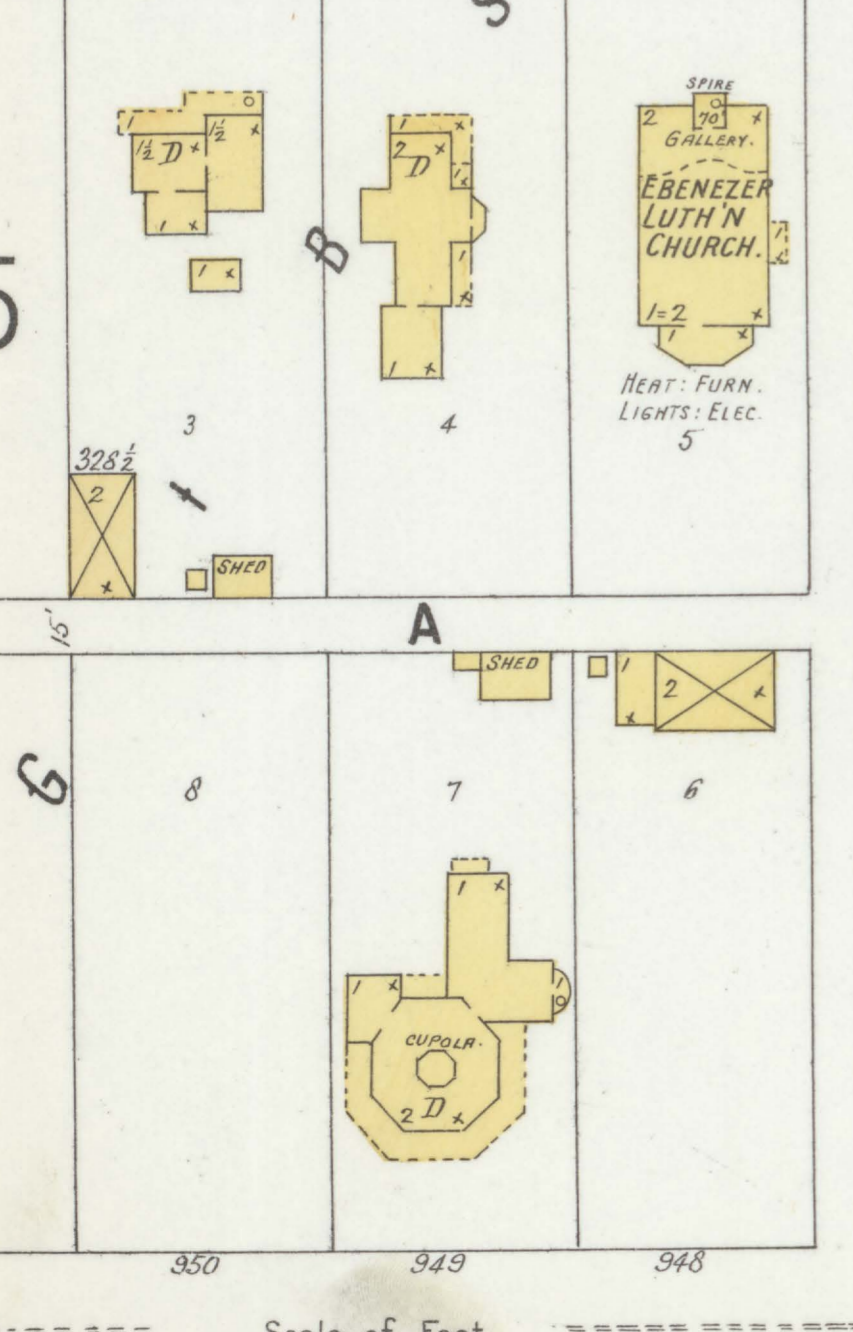
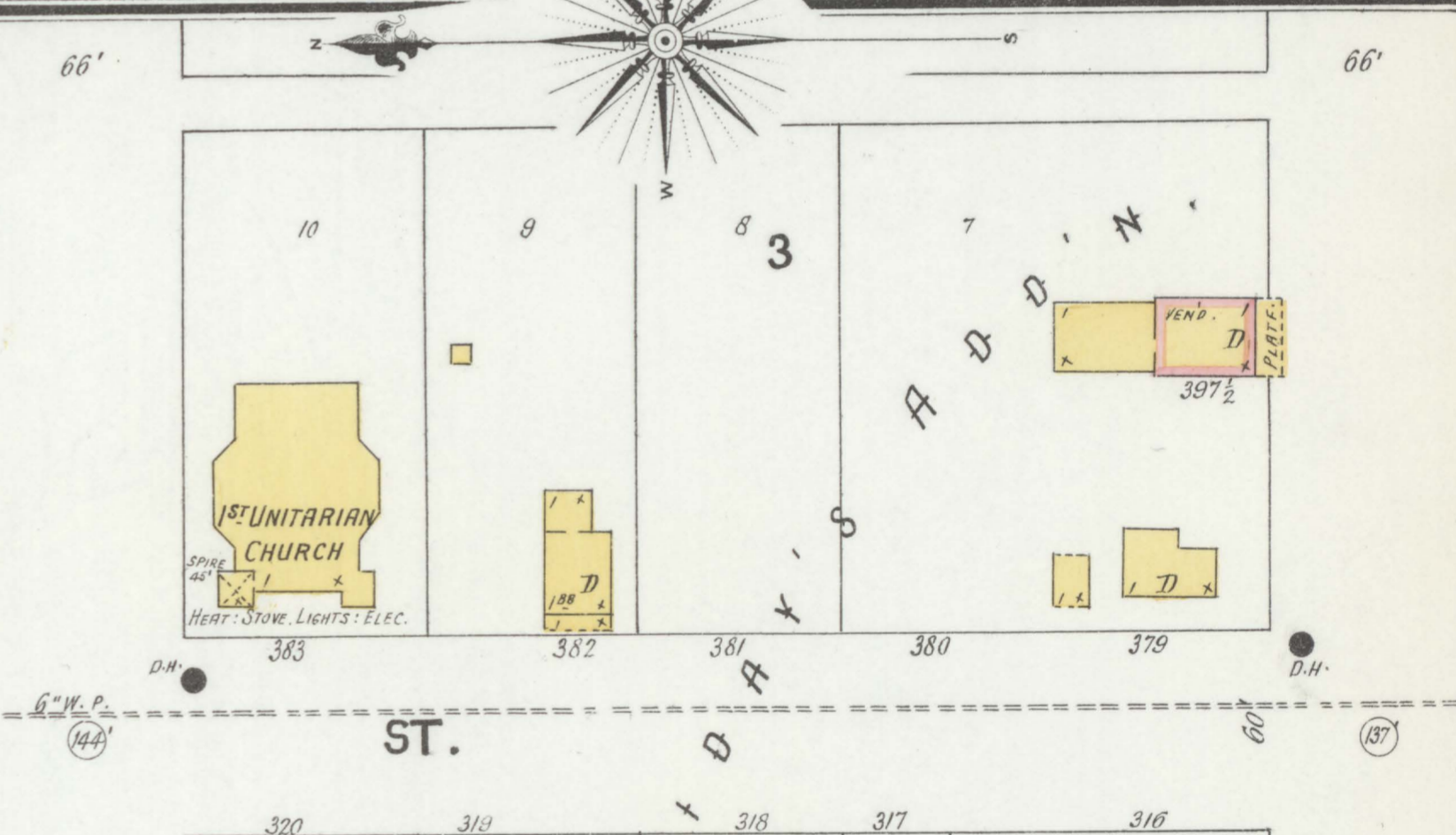
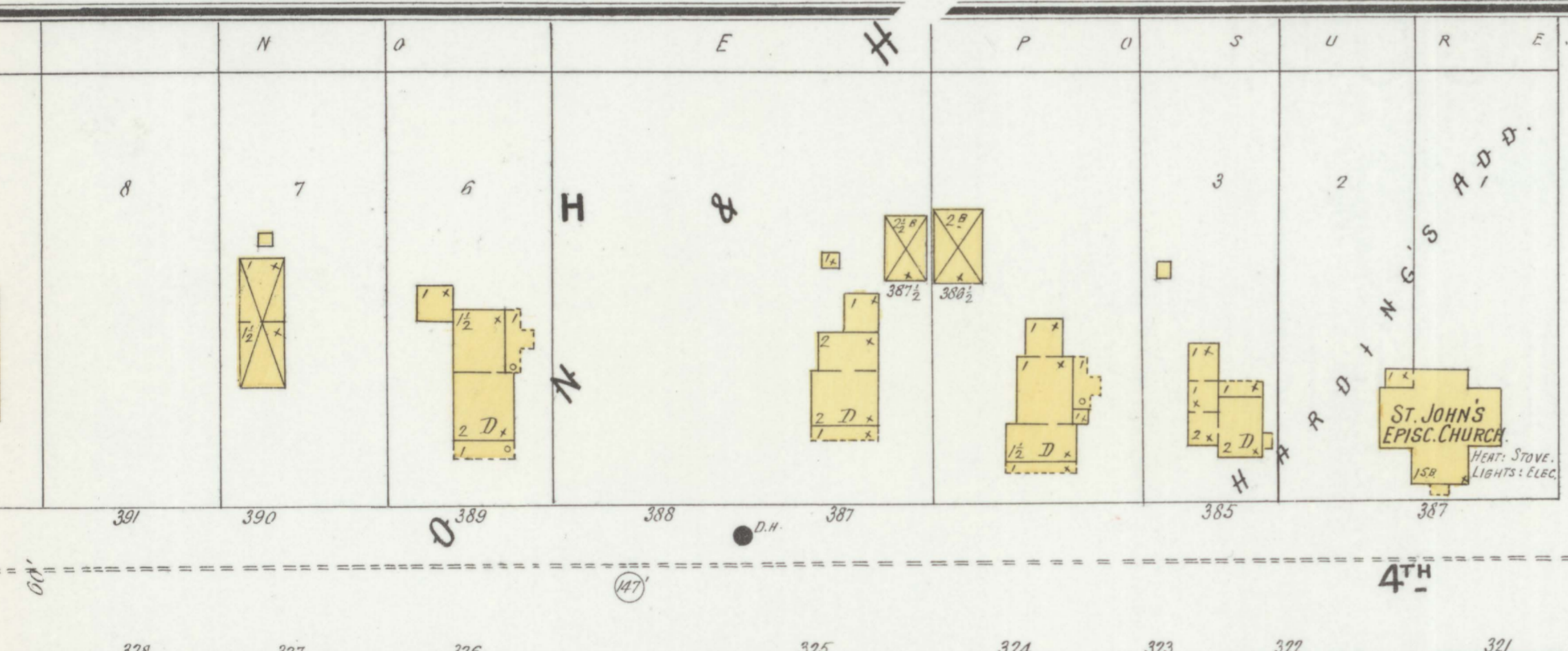
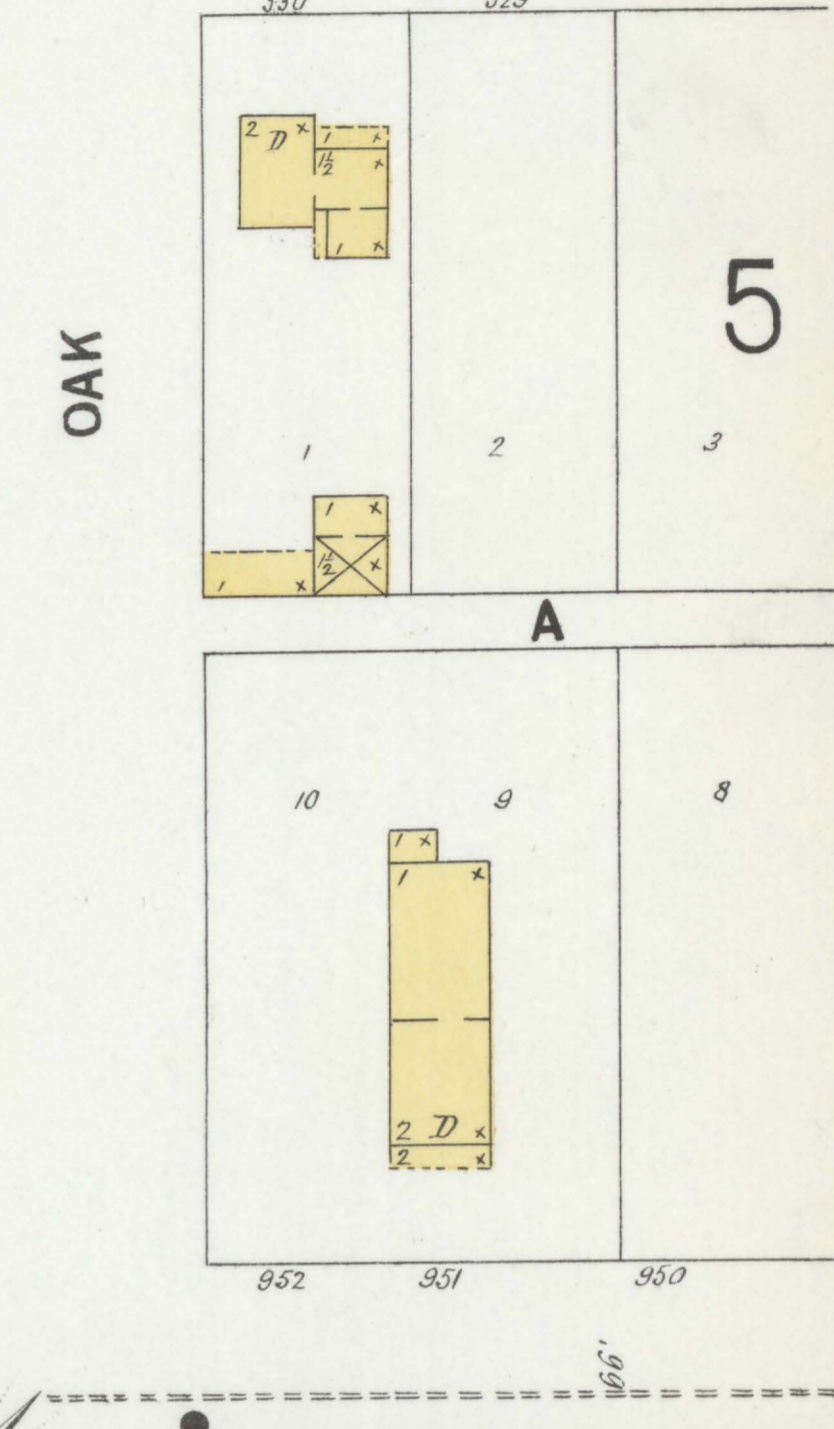
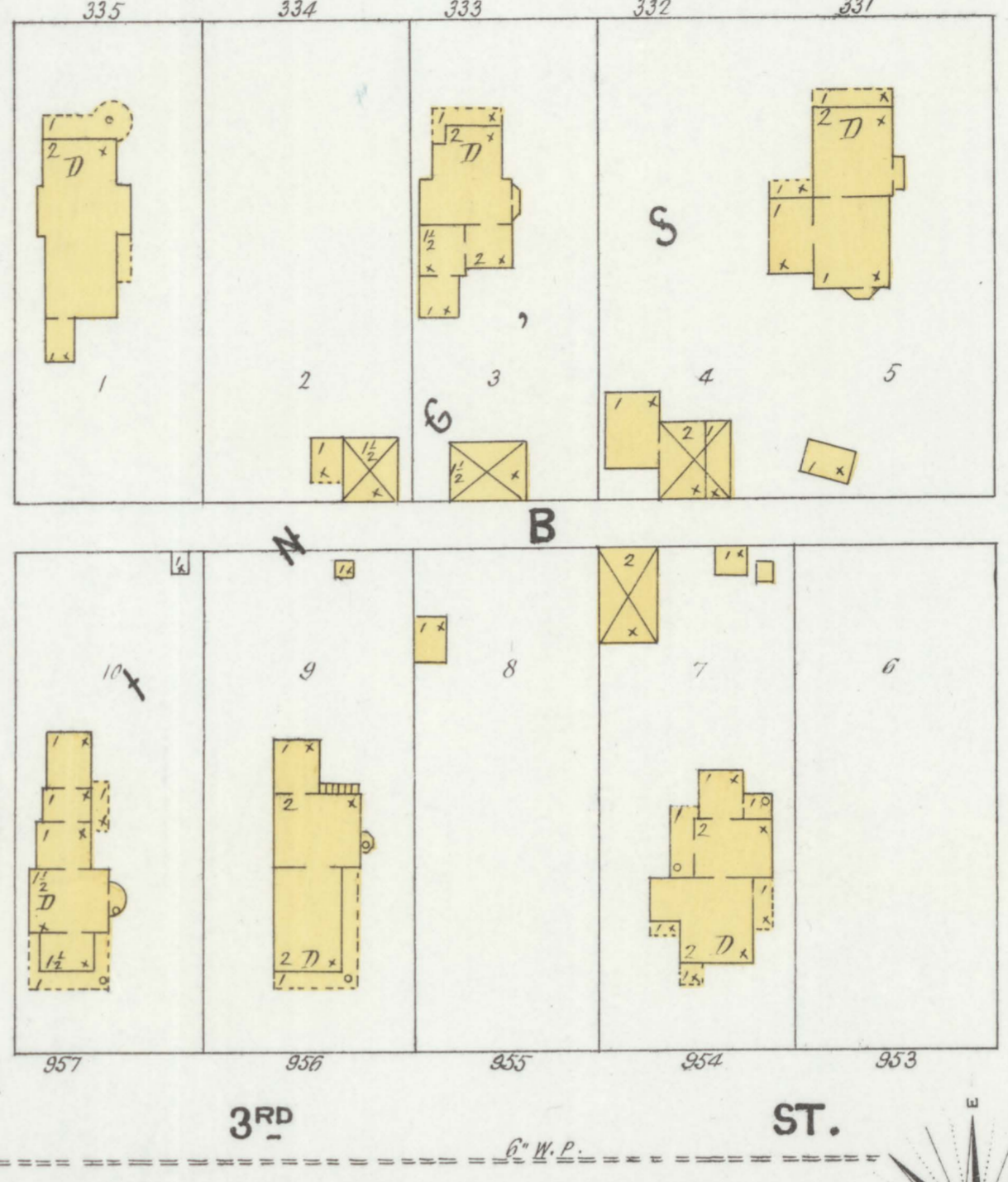
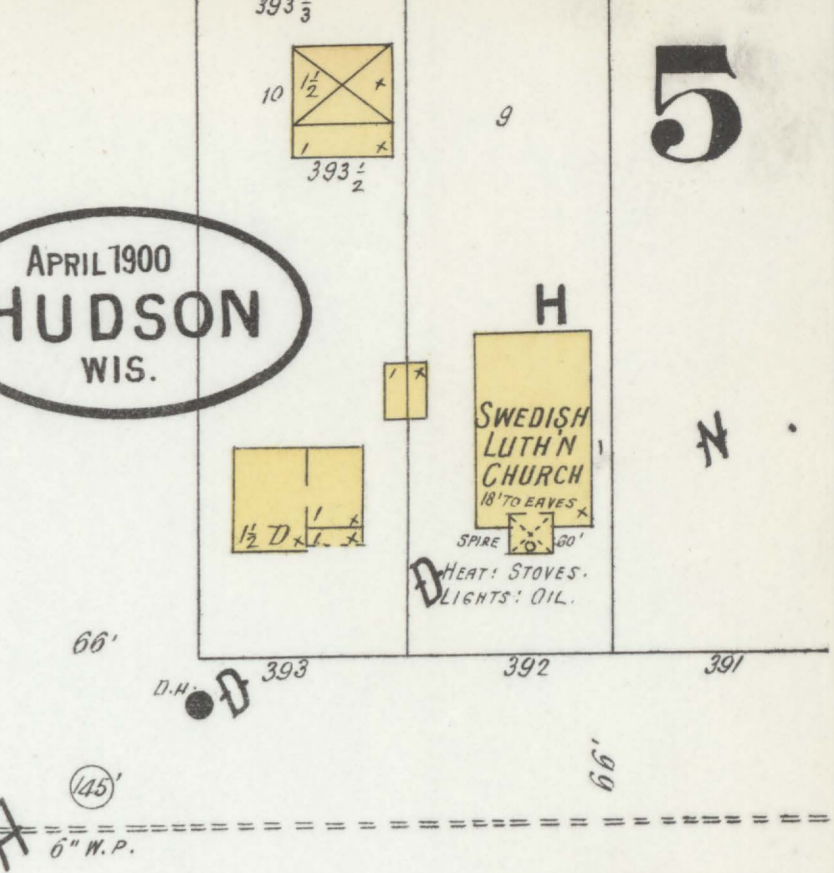
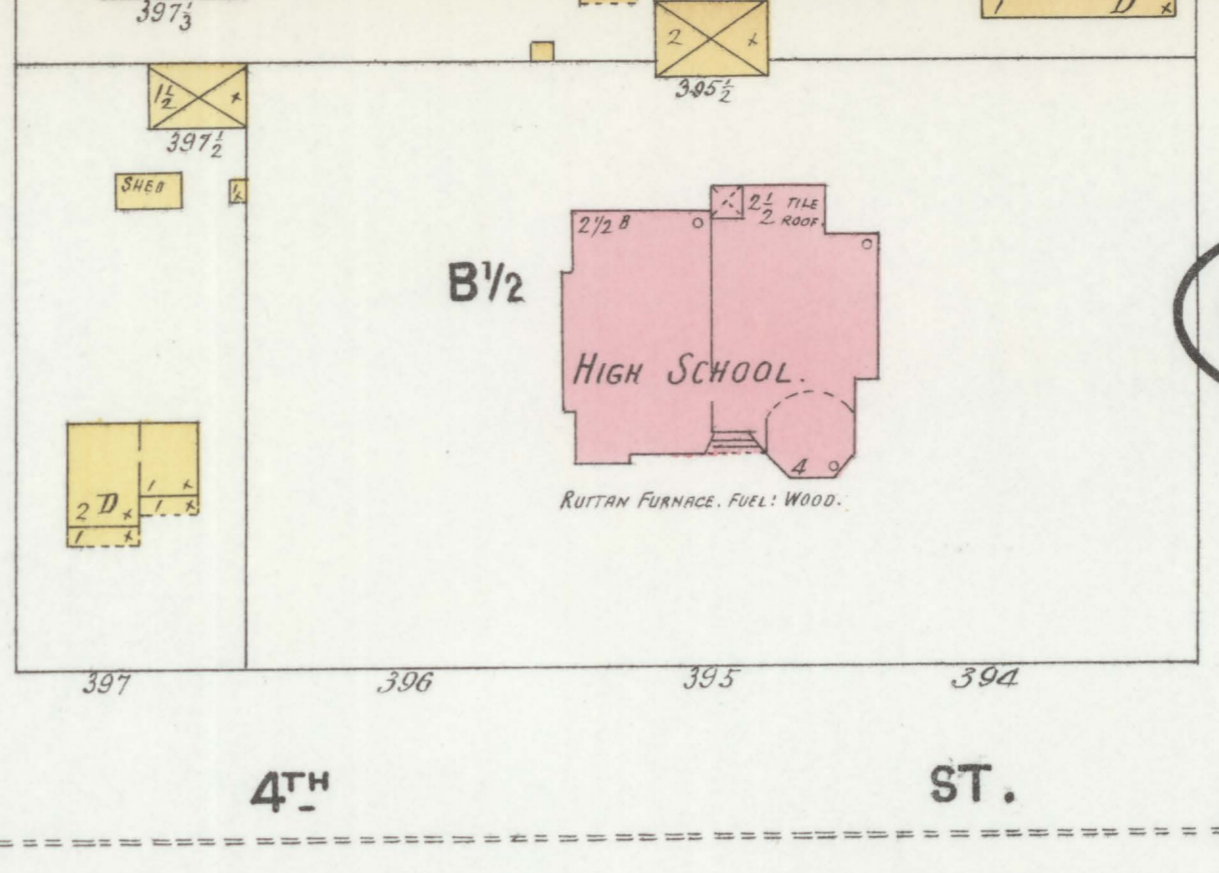
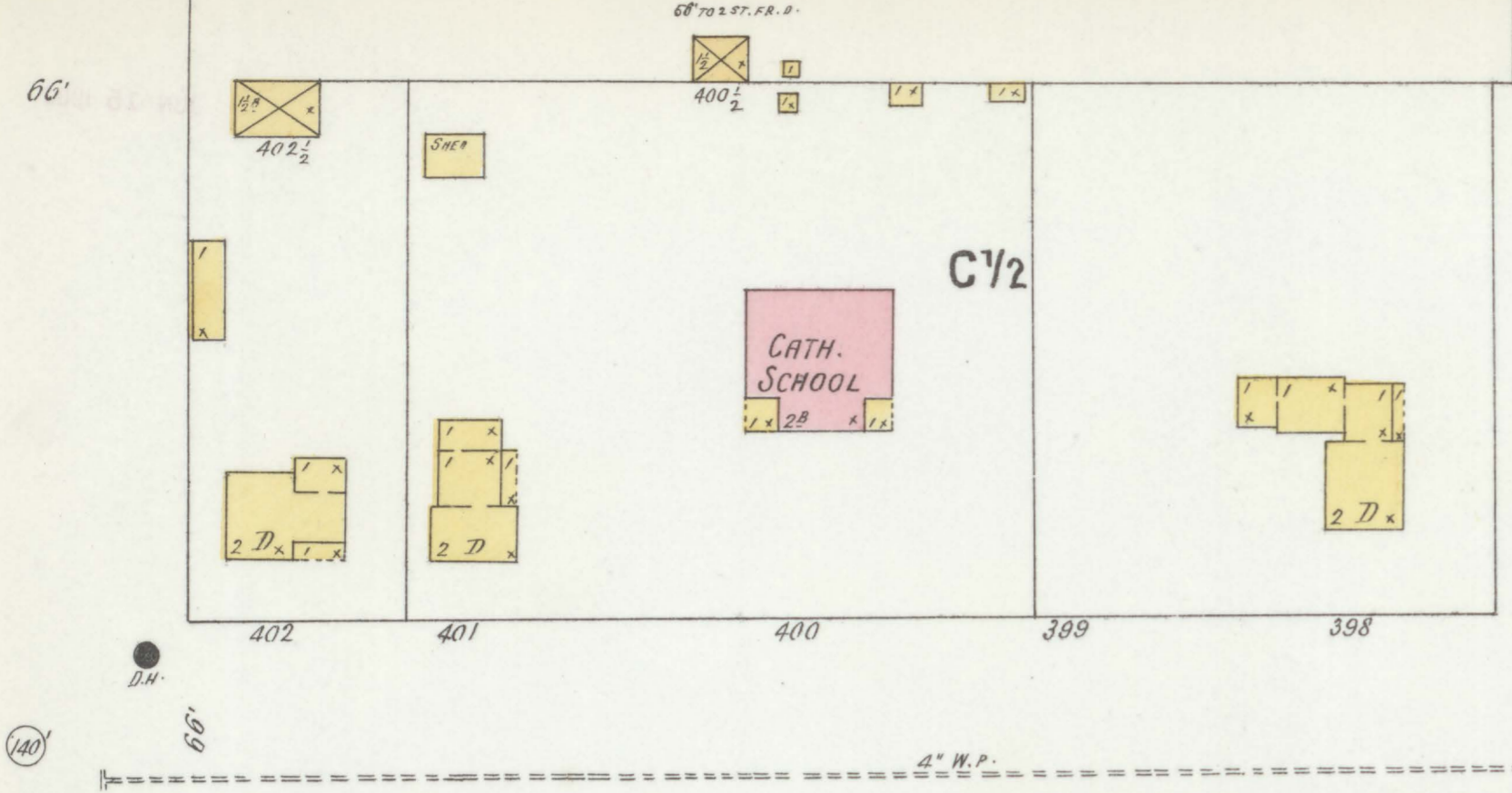
Scale of Feet.
0 50 100 150

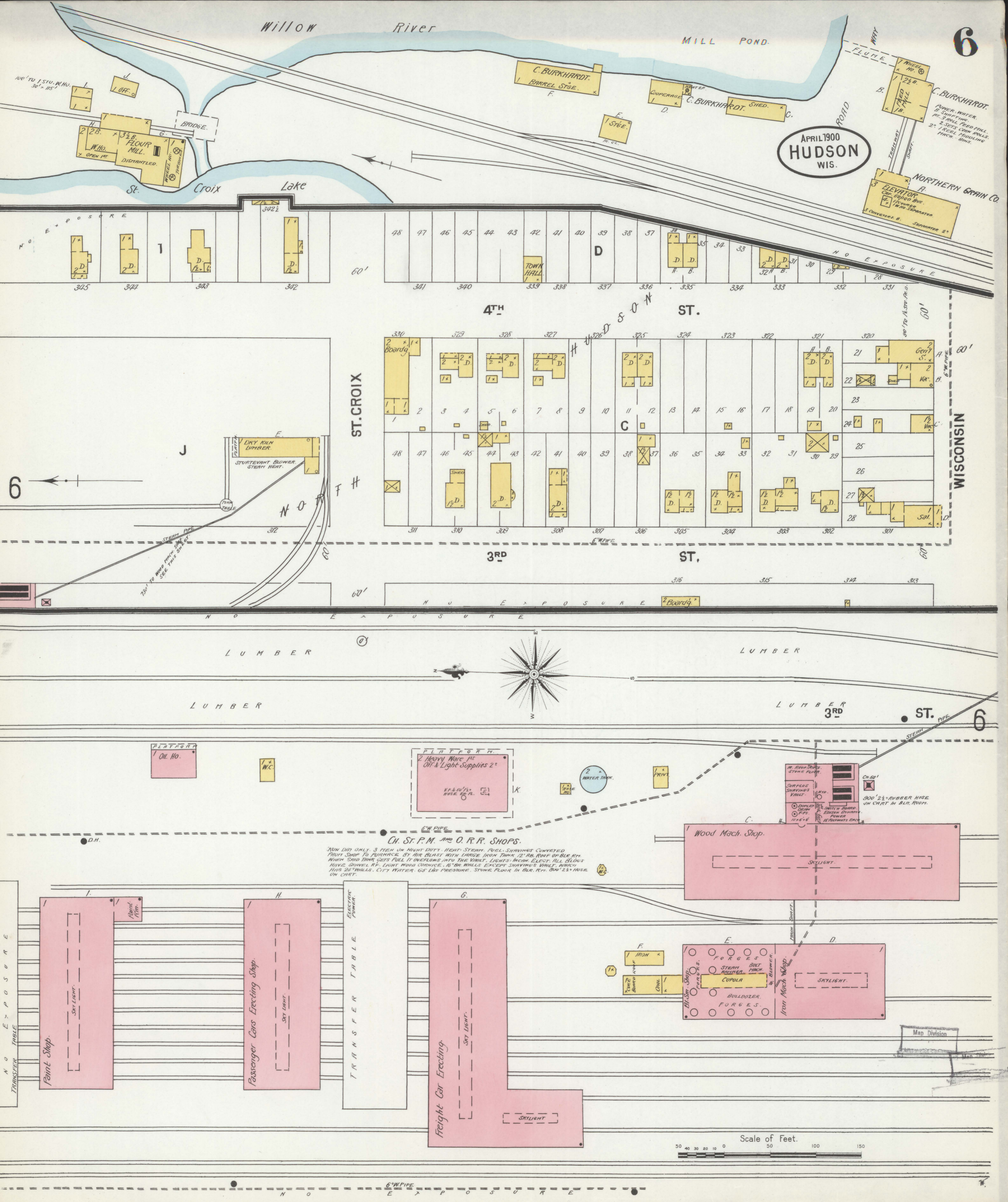


HUDSON COLD STORE & WARE HO. CO. HEAT STOVE IN OFF. LIGHTS ELECTRIC.

WALNUT 3

W. J. JOHNSON LIVERY





APRIL 1900
HUDSON
WIS.

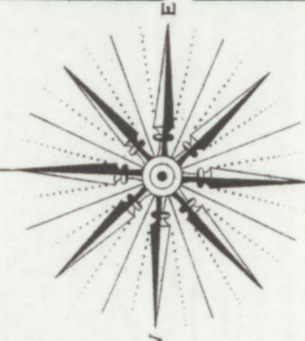
NORTHERN GRAIN CO.
ELEVATOR
CAP. 6000 BUS.
12' x 14' No. 3 Separator
3 CONVEYERS B. SUPERHEAT 2"

ST. CROIX

4TH ST.

3RD ST.

WISCONSIN



Scale of Feet.
50 40 30 20 10 0 50 100 150

CH. ST. P. M. AND O. R. R. SHOPS.
3000 DRY ONLY 3 MEN ON NIGHT DUTY. HEAT STEAM. FUEL SHAVINGS CONVEYED FROM SHED TO FURNACE BY AIR BLAST WITH LARGE IRON TANK 2' AB. ROOF OF BLK. RY. WHEN SAID TANK GETS FULL IT OVERFLOWS INTO THE VAULT. LIGHTS INCL. ELECT. ALL BLOWS HAVE GRAVEL RT. LIGHT WOOD CURTAIN. 16" BR WALLS EXCEPT SHAVINGS VAULT, WHICH HAS 24" WALLS. CITY WATER. 65 LBS PRESSURE. STONE FLOOR IN BLK. RY. 300' 2 1/2" ROSE IN CHART.

