



# The Student Voice

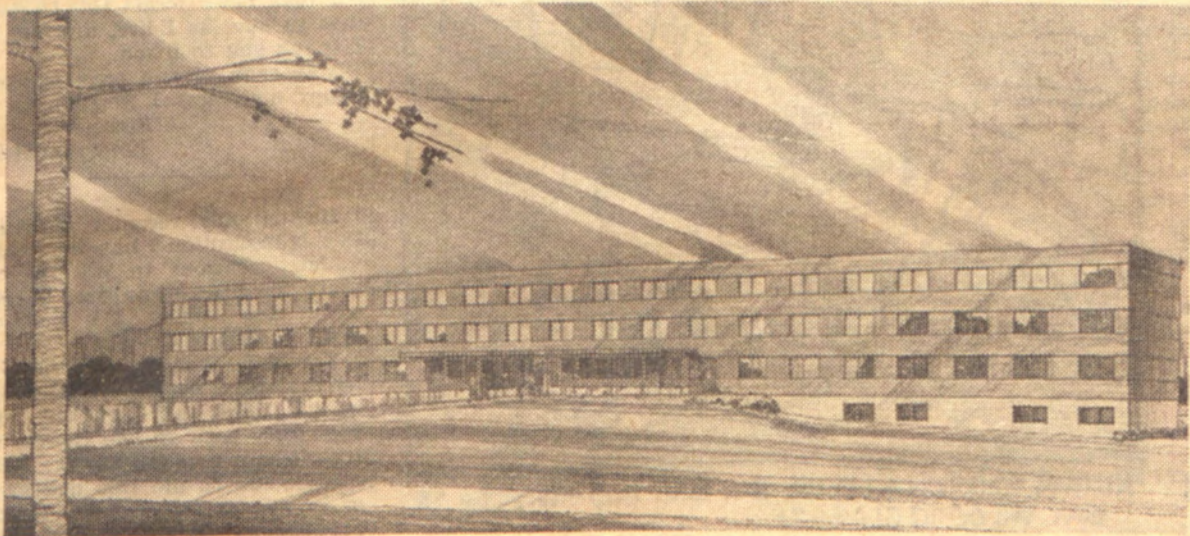
MONDAY, JANUARY 14, 1957

WISCONSIN STATE COLLEGE, RIVER FALLS

VOLUME XLIII

NUMBER 14

## Men's Dormitory Assured by Fall of 1958



Architect's drawing of the new men's dormitory to be completed by fall of 1958. The structure will have 100 rooms and is designed to house approximately 200 men.

## Government Releases Funds; Building Contracts Awarded

Male students attending the college in the fall quarter of 1958 will find dormitory space available for the first time in the history of the institution, it was confidently predicted here today.

Optimism concerning the date of completion of construction of the new men's dormitory came after approval by the FHA of a loan to the Wisconsin Building Corporation and awarding contracts Friday on the building.

**LOW BIDDERS AS** announced by the Board of Regents Office in Madison were George W. Olson, general construction, \$331,000; Bielenberg Electric Co., electrical, \$42,236; Early Plumbing Co., plumbing, \$32,648, and Winona Plumbing Co., heating and ventilating, \$42,950. Total of the bids was \$448,834.

Included in the FHA loan to the Building Corporation is \$650,000 for construction of the River Falls dormitory. The three-story structure will be designed to house approximately 200 men. It will have 100 rooms.

**THE BOARD OF REGENTS** had advertised for bids Nov. 19 on the dormitories here and at Platteville and Superior. Low bids on the Platteville dormitory totaled \$471,037 and on the Superior dormitory were \$445,377.

Last March \$300,000 was set aside by the federal government for construction of a Student Union. (Continued on Page Six)

## Center Closed In Crackdown On Untidiness

The Student Activity Center has been closed temporarily by the Student Senate in an effort to correct abuse of the rooms, Dick Schultz, Senate President, has announced.

The action by the Senate was taken after a number of requests for better treatment of the room had only fleeting effect or were completely ignored, Mr. Schultz said. He emphasized that the closing is only temporary but that this measure was taken to bring the matter more forcibly to the attention of those misusing the premises.

The center has become something of a problem with cigarette butts, pop bottles and coffee cups left in the room. Some of the furniture upholstery has been torn and the furniture is seldom in its proper place.

Terming it a "shameful situation," President Schultz said that unless conditions are cleared up the Senate might approve a suggestion that the area be used only by organizations and clubs who sign for it in advance.

## Slightly Less Than Eight Percent Make Honor Roll for Fall Quarter

Slightly less than eight percent of the student body at Wisconsin State College at River Falls placed on the fall term honor roll. According to information released by the Registrar's office, seventy-nine students attained a grade average of 2.5 or more. This is midway between an A and a B average. There are 24 seniors, 21 sophomores, 18 freshmen and 16 juniors on the honor roll.

Twelve students made straight "A" averages. They are:

LeRoy Anderson, Centuria; Jerome Benson, Pepin; William Dobson, Black River Falls; Michael Dodge, Hudson; Beverly Domaika, Rhinelander; William Hagestad, River Falls; Ronald Hayden, St. Croix Beach, Minn.; Dean Johnson, Pasadena, Cal.; Donald Johnson, Milwaukee; Betty Olson, Nye; Annie Robbins, River Falls and Judy Knopps, Menominee.

Students on the fall term honor roll by course of study are:

**LIBERAL ARTS:** Frederic Buede, Eau Claire; and Dennis Ruhnke, Hastings, Minn.

**PRE-PROFESSIONAL:** LeRoy Anderson, Centuria; John Butler, Rice Lake; Joan Gladwell, Chippewa Falls; Ronald Hayden, St. Croix Beach, Minn.; Harriet Kettelkamp, River Falls; Norma Kludy, Stratford; James Laue, River Falls; Robin Schaller, Stillwater, Minn.; Lewis Schoenwetter, Emerald; David Skoug, Cheatek; Eugene Trapp, Hammond; Robert Wolfe, Chippewa Falls; and Mark Wyman, River Falls.

**AGRICULTURE:** Leonard Bec-

ker, Almena; Richard Bubolz, Suring; Burt Devine, Withee; William Dobson, Black River Falls; John Foss, Minneapolis, Minn.; Lyman Franzwa, Mondovi; Allen Hjelmsand, Blair; Donald Kuechler, Herbster; Joseph LaVoie, Knapp; David Poulton, Neenah; Charles Redmond, Pitts-ville; Gordon Smith, Arcadia; James Sparks, Merrill; Vernon Stone, Amery; Arlan Vande Water, Holmen; Charles Wallen, Prairie Farm; Gordon Waller, Ettrick; and William Young, Ellsworth.

**SECONDARY EDUCATION:** Robert Ames, River Falls; Jerome Benson, Pepin; Alma Bents, Cumberland; Jean Biederman, New Richmond; Gerald Brynildson, Black River Falls; Marilyn Carlson, Amery; Grace Dahlberg, Frederic; Mike Dodge, Hudson; Richard Doetkott, River Falls; Beverly Domaika, Rhinelander; Harry Elzinga, Sheldon; Elvin Fleming, Pepin; Thomas Forthum, Spring Valley; Harold G. Green-

(Continued on Page Four)

## CHICKEN! Editor Flees Campus

If this issue of The Student Voice appears to be a little "spotty" in its coverage, there's a reason. Arlin Albrecht, editor, came down Wednesday afternoon with chicken pox. At last reports he was at his home in Chippewa Falls awaiting further developments.

## CAMPUS CALENDAR

### Monday, Jan. 14

7 p.m., Alpha Psi Omega meeting, Social Room.

8 p.m., Kappa Delta Pi meeting, Social Room.

### Tuesday, Jan. 15

5:30 p.m., Dance Theatre Supper meeting, Calico Room.

7 p.m., Presidents of Women's Off - Campus Houses meet in Dean's office.

8 p.m., PTA meeting, Little Theatre and Social Room.

### Wednesday, Jan. 16

10 a.m., Freshman Class meeting, Aud.

6 p.m., Toastmasters Club meeting, Calico Room.

6 p.m., Debate meet, 212S.

7 p.m., Math Club meeting, Social Room.

### Thursday, Jan. 17

7 p.m., F.T.A. meeting, Social Room.

### Friday, Jan. 18

8 p.m., River Falls-Stevens Point basketball game, there.

### Saturday, Jan. 19

8 a.m., "B" Debate Tournament.

8 p.m., River Falls - Platteville basketball game, there.

### Thursday, January 24

6:30 p.m., F.F.A. Banquet at the Charbel.

## RF Freshman Receives Forestry Scholarship

Don Marquardt, freshman from Bloomer, has received a \$75.00 forestry scholarship from the Eau Claire-Chippewa Bankers Association.

He and Watford Sequin, Jr., of Eleva, were the first to win the scholarships. The River Falls freshman was active in 4-H work and received the award for outstanding achievements in forestry projects. He has planted about 3000 trees as part of FFA and 4-H work and also has initiated a gully project on his parents' farm.

## HEALTH SERVICE OFFERS POLIO SHOTS

Polio vaccine will be available to all students at \$1 a shot through the services of the Health Cottage Jan. 14-18. The first injection will be administered in the Social room from 11:30 a.m.-12:30 p.m. on these dates. The second shot is to be given approximately one month later.

Students with colds or fevers will not be allowed to take the vaccine.

The following schedule of injections has been arranged on an alphabetical basis according to the first letter of last names:

Monday, Jan. 14: letters A through D.

Tuesday, Jan. 15: E through H.

Wednesday, Jan. 16: I through L.

Thursday, Jan. 17: M through R.

Friday, Jan. 18: S through G.

## Carlson, Hallenberger, Shay to Vie For Winter Carnival Chairwoman Post

Chosen a week before Christmas vacation, candidates for Winter Carnival Chairwoman have been announced by The Student Senate. They are, Marilyn Carlson, a senior from Amery, Sally Hallenberger, a senior from Hudson, and Dianne Shay, a junior from Somerset. One of these candidates to be elected on Wednesday, February 6, will act as chairwoman of River Falls State College's 31st annual Winter Carnival. They will be presented to the student body on Monday, Feb. 4, at a 10 o'clock convocation. The Carnival dates are Feb. 14 to Feb. 17.

**THE WINTER CARNIVAL** King, to be nominated by petition and elected at the same time as the chairwoman, will be crowned at the Talent Show, Thursday, Feb. 14 and reign over the four days of Carnival activity.

A beard growing contest, the Senate announces, will begin im-

mediately, with judging of the beards to take place at the Thursday evening Talent Show. Two prizes will be awarded in this contest, one for the heaviest beard and the other for the most novel one.

**APPEARING AT THE** Talent Show, sponsored by the FFA, will be the royalty from the St. Paul Winter Carnival. The Winter Carnival King and Queen will be crowned at this event.

Friday evening, Feb. 14, River Falls will play Oshkosh in a basketball game set for 8:00 p.m. Before the game, a pancake supper will be served in the cafeteria.

**SATURDAY MORNING,** Feb. 16, the traditional snow sculptures will be judged. Each campus organization is urged to construct one of these sculptures, the Senate states. Three cash prizes will be awarded for the best-executed sculptures. Saturday will see the outdoor activities taking place on the hills surrounding River Falls. Skiing, ice skating on the high school rink, and tobogganing races will be the order of the day.

River Falls will meet Milwaukee in a basketball game in North Hall gym at 8 p.m. Saturday. Following the game, the Winter Carnival Dance will take place; the dance will last from 10 until 1 o'clock and conclude the four days of Winter Carnival activity.



Getting in the mood for Winter Carnival the three candidates for chairwoman discuss plans for the event on the River Falls campus. Left to right are Marilyn Carlson, Diane Shay, and Sally Hallenberger.

# Guest Editorial

by Dick Schultz, Student Senate President

As you pass the closed door of the activity center you may have a feeling of resentment against the Student Senate for closing that door. But we hope you will do a little objective thinking about the causes behind this action.

First, let us consider what we have in the activity center lounge . . . a lounge which has been furnished and maintained from funds contributed by ALL students. The furniture is of late design which combines comfort and beauty. Quality materials have been used. The color scheme has been carefully chosen as was the original placement of furnishings. Paid for by all, the lounge was designed for the use of the ENTIRE student body.

Yet, a few inconsiderate students by their careless and thoughtless actions are making the center undesirable for the majority who want to spend their leisure time in reasonably clean surroundings. Most students refuse to enter a place with the atmosphere which ordinarily prevails in the center. This is particularly embarrassing to persons showing guests around the campus.

The Senate closed the lounge reluctantly. It had tried various methods to persuade those who had no regard for community property to acquire a sense of responsibility. Attempts were made through editorials such as this, through class meetings, organizational meetings and bulletins to improve the situation. These methods failed. The closing is not a permanent thing. It is merely to prompt a little thought.

Students must realize they are no longer children. They are required to assume the responsibilities of adults. It is the responsibility of every student using the lounge to help keep it in reasonable condition. If you will accept that responsibility yourself and remind others of it, the problem will cease to exist.

# Student Senate Minutes

The meeting was called to order Monday, January 7, by President Dick Schultz. The treasurer reported a balance of \$805.11 in the Senate treasury.

**Activity Center**  
The general untidiness of the Student Activity Center was discussed. Don Laue suggested and then made a motion that the center be closed until the students develop an attitude of respect for the furnishings. This program is to begin Monday, Jan. 14.

**Freshman Initiation**  
Verlyn Norton presented a proposed brief of future freshman initiation activities upon which the Senate made a series of recommendations. This brief will be presented to the Freshman class.

**School Flag**  
The school flag committee reported that the replicas of the flag have not yet been made, but

that the contract has been signed.

**Winter Carnival**  
The candidates for Winter Carnival Chairwoman are Dianne Shay, Sally Hallenberger and Marilyn Carlson. Campaigning for chairwoman may begin Monday, Jan. 28. Presentation to the student body will be Monday, Feb. 4, at 10 a.m. The election will take place Wednesday, Feb. 6, from 9 a.m. until 3 p.m.

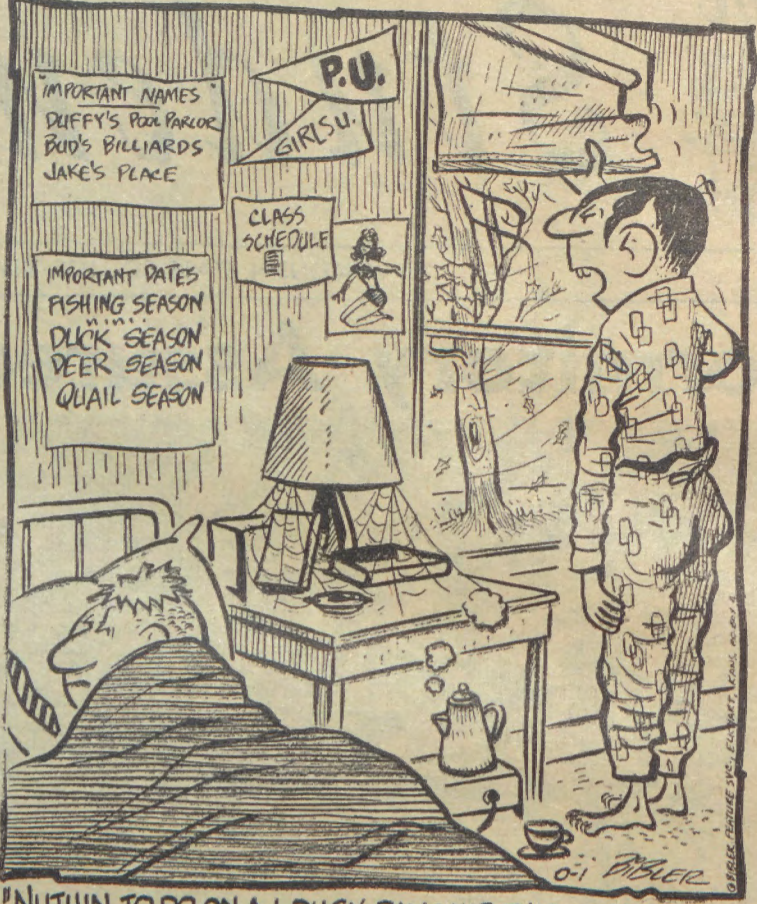
Petitions for Winter Carnival King must be submitted by Jan. 23. The first three approved by the Dean's office and bearing 50 signatures will be accepted. These candidates will be presented and elected at the same time as the candidate for chairwoman.

**Present:** Martell, Schultz, L. Johnson, Kinney, Jensen, Christenson, Laue, Larson, D. Johnson, Hanson.

**Absent:** Fleming.  
Secretary, Mary Lou Jensen.

# LITTLE MAN ON CAMPUS

by Dick Bibler



"NUTHIN TO DO ON A LOUSY DAY LIKE THIS - WHADDA YA SAY WE GO TO CLASS?"

# BOOKS! GAD

Using my column in this and next week's issue of *The Student Voice*, I should like to introduce the poetry and prose of the late Dylan Thomas, a writer whose work I consider outstanding.

Horace Gregory, writing in *The New York Times Book Review*, December 16, 1956, spoke of Dylan Thomas "... as a lyric poet of the first order," and his poetry as "inspired language, . . . a direct evocation of the sensuous image and sound." With an apology to critic Gregory, I have chosen several specific things about Thomas' poetry and I shall attempt to illustrate them. (Might I add, though, it is quite difficult to be "specific about poetry.")

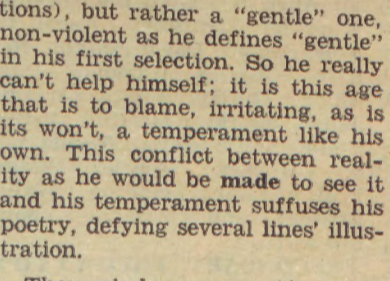
Thomas' poems have about them a sort of "desperation"—not futility or hand-wringing—but a "crying," as the writer of the Psalms defines the word. They seem to be the words of a dying man who has not done everything he had to do. It is as if this man were saying to all other men: "You do what I did not do." This quality of Thomas' says that he loved life very much, as,

"Do not go gentle into that good night,  
Old age should burn and rave at close of day;  
Rage, rage against the dying of the light."

Thomas has a childlike quality of suddenly telling what is eternal—the sort of eternal things one recognizes just upon hearing them mentioned. These statements wantonly explode throughout his poems and herein doubtless lies Thomas' reputed "childlike charm;" "Fern Hill," from which these next lines are taken, abounds in this. Thomas is telling about his youth,

"Time let me play and be Golden in the mercy of his means,  
And green and golden I was huntsman and herdsman, . . ."

In this article, Gregory mentions Thomas' poetry as being a disclosure of this age "... (as one) dominated by prosaic fears, ambitions and demands." Thomas' attitude toward reality, as revealed in his poetry, is somewhat unique: his is not exactly a romantic temperament (evident from the two foregoing selec-



HAGESTAD

tions), but rather a "gentle" one, non-violent as he defines "gentle" in his first selection. So he really can't help himself; it is this age that is to blame, irritating, as is its won't, a temperament like his own. This conflict between reality as he would be made to see it and his temperament suffuses his poetry, defying several lines' illustration.

Thomas' language, "inwardly inspired," as Gregory calls it, seems to push back the "wall around the English language—that wall which confounds attempts at expression. He is "green and golden" in his youth, the sea shore is "heron-priested," etc. These lines, from "This Side of the Truth," are striking in this respect,

"This side of the truth  
The somewhat romantic outlook of Thomas, displayed in his poetry—that outlook which causes him to define "gentle" as he does, which moves him to unconsciously chastize this age—is a definite characteristic of his; it carries him to realistic-naturalistic view of human behavior and events in his stories and essays. In these, as I shall try to point out next week, he is a "successful romantic."

# Letters to the Editor...

Dear Friends of River Falls, Words fail to express my appreciation to you, and all I can say is "My heartfelt and sincere thanks to all of you for my lovely little car."

You'll never fully realize just how much it means to me. I shall treasure it for many years and everytime I use my car, my thoughts shall go back to Christmas, 1956, and the wonderful people at Wisconsin State College at River Falls. It is a real thrill to know that one has so many thoughtful friends.

I shall never forget this Christmas as long as I live, and again I thank you so much.

May each of you have a most happy and blessed New Year.  
Sincerely,  
Mary O'Mera

Dear Editor, Having only recently returned to this institution I have had only a few occasions to use the library facilities. However, during those few times I have been greatly dismayed.

The noise has been terrible. I have hardly been able to hear myself think over the din. In fact even back in the carrels in the "stacks" quiet hasn't predominated. To me this disregard of respect by the students is unpardonable. It got so bad the other day that I asked a group of four, on the second floor, to "hold it down" and that lasted but for a few moments.

This is not a problem that the librarians can do much about. If the group in the library is going to be loud they can do virtually nothing and should not be expected to act as policemen. For this is not a high school study hall where forceful quietness predominates; it is a college library where deep reading that necessitates quiet should and must be done.

I cannot help but feel that most of this problem is caused out of thoughtlessness and not malice.  
Sincerely  
Tom Benson

You may not see my son,  
King of your blue eyes  
In the blinding country of youth,"

The somewhat romantic outlook of Thomas, displayed in his poetry—that outlook which causes him to define "gentle" as he does, which moves him to unconsciously chastize this age—is a definite characteristic of his; it carries him to realistic-naturalistic view of human behavior and events in his stories and essays. In these, as I shall try to point out next week, he is a "successful romantic."

# AROUND THE CAMPUS

**MALE STUDENTS NOTE**  
Openings for voices in all parts still remain in the men's glee club. Rehearsals will be held in 213 North Tuesdays at 1 p.m. and Thursdays at 6:15 p.m.

**F.F.A. BANQUET**  
Tickets for the F.F.A. Banquet, to be held Thursday, Jan. 24 at the Charbel, are available from James Sparks, Don Brue, Larry Sirinek or Dick Shimel. These tickets, for the 6:30 p.m. banquet, are \$1.75 apiece.

**THE GROUP**  
A meeting of **The Group** will be held in the Knotty Pine room on Thursday, January 17th, at 7:00 p.m. Anyone interested in writing or illustrating for the next issue of **The Prologue** is invited to this meeting.

**VETS CLUB**  
Members of the Vets Club will meet Jan. 16 at 8 p.m. in the Legion Hall. Several important matters are to be discussed and Art Moe, president, urges all members to be present.

**NURSES CLUB**  
An organizational meeting and movie have been scheduled for 3:30 p.m. Jan. 15 at the high school auditorium to form a future nurses club.

**CHESS CLUB**  
The chess club will hold its regular meeting at 8 p.m. Wednesday. Instruction will be given.

**ATELIER**  
Atelier will meet Wednesday, Jan. 16, at 7 p.m. in 112S. A discussion of modern art and Picasso is planned, in regard to the movie on the life and works of Picasso soon to be shown.

**FTA**  
The Future Teachers of America will meet on Thursday evening, Jan. 17 at 7 p.m. in the Social room. President Kleinpell will be guest speaker. Refreshments will be served.

**Math Club**  
The Math Club will meet Jan. 16 in the Social Room at 7 p.m. The abacus will be considered. Refreshments will be served.

# STUDENT VOICE STAFF 1956-57

The regular student publication of the Wisconsin State College at River Falls, Wisconsin. PUBLISHED WEEKLY during the school year except for vacations, holidays, during exams, etc. Subscription rate, \$2.00 per year. Free to Servicemen.  
Accepted as second class matter by the Post Office at River Falls, Wisconsin, under the Act of Congress, March 3, 1889.  
**Editor** ..... Arlin Albrecht  
**Sports Editor** ..... Rog Gundlach  
**Reporters** ..... Bill Finlan, Julia Kaminski, Sue Christenson, Carolyn Brown, Glen Sandve, Mary Lou Jensen, Marlene Skagen, Mark Wyman.  
**Sports Reporters**—Griff Howell, Jim Laue, Ed Schlumpf.  
**Photographers** ..... Dick Doetkott, Arlin Albrecht.  
**Columnist** ..... William Hagestad  
**Music Critic** ..... Harry Elzinga  
**Business Manager** ..... Barbara Brickner  
**Circulation Manager** ..... Rolland Grothe  
**Advisor** ..... Wayne Wolfe

## IT'S FOR REAL! by Chester Field

**FASHION**

"Paris has necklines on sideways,  
New York has the waist shoulder-high,  
There's nothing like fashion  
To cool off your passion!"  
He laughed . . . 'til he thought he would die!

**P.S. Male knees in Bermuda shorts can be pretty funny too!**  
Fat or slender, either gender, if you like your pleasure BIG, enjoy the real full flavor, the real satisfaction of a Chesterfield. Packed more smoothly by Accu-Ray, it's the smoothest tasting smoke today.

**Smoke for real . . . smoke Chesterfield**

\$50 for every philosophical verse accepted for publication. Chesterfield, P.O. Box 21, New York 46, N. Y.

# Student Gift Helps Mary Toward Goal

by Jim Laue

With the help of her "many friends here at River Falls," Mary O'Mera has taken another step toward her goal.

The Knapp sophomore, who has been without the use of her legs for almost 11 years, was presented with a personal electric car at an assembly program just previous to Christmas vacation. With the car to take her around campus and make her college life easier, Mary is now virtually certain that she will be able to complete the four-year course and fulfill her desire to become a social worker.

DOUG KELLY, junior from River Falls, approached the Student Senate two months ago with the idea of instigating a drive to purchase a campus transportation vehicle for the handicapped girl. Class presidents were contacted and, through them, every student in school donated to the "Mary O'Mera Car Fund."

Mary suffered a polio attack in 1946 while in sixth grade and missed two years of school. Loss of the use of both legs resulted. She attended junior high school at an orthopedic school in Eau Claire with the aid of braces and crutches, not knowing definitely whether she would be able to attend high school. College was indeed a far goal.

Family and friends in Boyceville, where Mary's parents lived before moving to Knapp, helped her complete high school where she met personally only two of the teachers from whom she took classes. Assignments and special notes were sent home, Mary did the work, and the papers were sent back to school by way of friends and graded.

AFTER GAINING the school honor roll several times and successfully completing a series of special tests in her senior year, Mary received her high school diploma in the spring of 1955. Graduation exercises marked the only time she ever saw all her classmates.

More tests were in order for anticipated college entrance. Mary passed them, and was told she could attend any state school with aid under the Wisconsin rehabilitation program. She chose River Falls because of its comparatively small size and the good recommendation she had heard from friends who attended college here.

Now that Mary has the car, time for her daily trips between the dormitory and other campus buildings will be shortened unbelievably. An already familiar sight is the shiny black vehicle parked near the east entrance of South Hall. A special ramp has been built to allow her to keep her car just inside the east door of Hathorn Hall.

Mr. Kelly, to whom goes most of the credit for securing the car, plans to build small-scale ramps on Cascade avenue to all Mary to drive to North Hall for classes scheduled there.

The machine, which is run entirely by hand levers, has six settings—break, reverse, low, high, neutral and lock. Although Mary has never operated any vehicle except childhood wagons and tricycles before, she has had trouble only in learning how to back up.

What use will she find for her car after college? Mary plans to use the Lectracar in her work after graduation from River Falls unless, as she puts it, "someone here needs it worse than I do."



Mary O'Mera and her Lectracar are fast becoming a well-known pair on the River Falls campus. Miss O'Mera, a sophomore from Knapp who has been without the use of her legs for almost 11 years, was presented with the car by the entire student body at an assembly just before Christmas vacation.—Photo by Doetkott.

# News Analyst Believes U.S. Wrong In Forcing Anglo-French Withdrawal

by Pat Lind

Because of the timeliness of the issue, Major George Fielding Eliot changed his topic from "How is Your Home Town Defended?" to "The Middle East" in the Thursday, Jan. 10, convocation.

A news analyst, Mr. Eliot commented that one of our greatest mistakes was to pressure the British into withdrawing from the Canal Zone. If our aim was to win the thanks of the Arab states, "nothing in history suggests that the gratitude of a people can be depended upon," Major Eliot said.

We are moving more firmly to define our interest in the Middle East, he said, because President Eisenhower had to take over during the illness of Secretary of State Dulles and became increasingly aware of the problem.

"Preservation of a firm political structure in Western Europe has been the cornerstone of our foreign policy since the close of World War II. The Eisenhower proposal continues this policy," Major Eliot said. "Since there are only three places in the world where modern weapons can be manufactured—North America, Western Europe, and the Soviet Union—if the USSR gained control of Western Europe, we would be outgunned."

"The Middle East holds the keystone position between Europe, Asia, and Africa," the commentator remarked. "If deprived of Middle Eastern oil, Western Europe will suffer a grave economic handicap, and the loss of the Middle East is the loss of WW III before it begins."

"Instead of attempting to deny seizure of the canal on legalistic arguments," the major said, "Britain should have shown it to

be a Soviet plot to gain control of the Middle East."

Mr. Eliot commended President Eisenhower's original proposal—building a fence to exclude the Soviet Union and using economic aid in the area—as making a good deal of sense. "It leaves a free hand and, if the hand is skillful, it is a good idea."

Mr. Eliot concluded his talk by saying, "The Russians can afford to lose in the Middle East—we cannot."

## RELIGIOUS ACTIVITIES

LSA

The LSA will sponsor a roller skating party at Red Wing on Tuesday, January 15, at 7 p.m. Members should meet at the Lutheran House of Worship at 6:30 p.m. The first of a series of discussions on various religious faiths will be held at the regular Sunday evening supper meeting on Jan. 13.

USF

The United Student Fellowship will hold its regular Sunday evening meeting this week at 5:15 p. m. at the Congregational Church. A fireside fellowship meeting will be held on Friday, Jan. 18, with time and place to be announced on the bulletin board.

YM-YWCA

YM-YWCA will meet Tuesday, Jan. 15, in the Social room at 7 p.m. On the program are group singing and Bible study.

# 'Lady's Not for Burning' To Be Presented Next Week

"The Lady's Not for Burning" directed by Noel Falkofski. The cast is as follows:

by Christopher Fry, a noted British playwright and poet, will be presented in the Little Theatre on Wednesday, Jan. 23, at 8 p.m.

It is a modern play in a 14th century setting. The stage will be designed as a space setting with various levels.

The story, told in poetic form, is of a young gallant named Thomas coming into a sleepy little village to find it in an uproar about a young girl named Jennett, thought by the townspeople to be a witch and hence to be eliminated. Of course Thomas interferes and sets off a series of events involving the town's mayor and his family.

An all-student production, "The Lady's Not for Burning" is being

- Richard -----Greg Griffin
- Thomas -----Henri Elzinga
- Alizon -----Ramona Robellia
- Nicholas -----Alex Romanowski
- Margaret -----Ora Fast
- Humphrey -----Jerry Smith
- Tyson -----Al Krause
- Jennett -----Sara Garnett
- Toppercorn -----John Kestell
- Skipp -----Gerald Mielke

### SENIORS

Orders for caps and gowns will not be taken the week of Jan. 14, but will be taken at a later date, to be announced.

Roger Hanson



January  
**SPORT COATS**

**SPECIAL GROUP — Val. to 29.50**

Man! What values! Broken sizes and colors but if your size is there it's a great bargain! We must clear them fast—hence this drastic reduction!

**9.99**

Curlee & Clothcraft

**100% WOOL SPORT COATS**

Reg. 22.50

**18.95**

ENTIRE STOCK on sale: 100% wools and new stock. Plenty of newest lighttones plus dark tones. Sizes 36-46 . . . regulars and longs. Grand coats for dress, party and school wear.

**REG. 29.50 - 26.95**

**REG. \$25 --- 21.95**

Bargains on Suits, Top Coats, Jackets, Trousers, Shirts, etc.

in our annual January Store Wide Clearance.

**BENSON'S CLOTHING**

Next to Cladstone — RIVER FALLS

## Jim Crane to Address Wesleyans at U. of M.

James Crane of the River Falls art department will be guest speaker Sunday, Jan. 20, at a meeting of the University of Minnesota Wesley Foundation. Members of the local Wesley Foundation have been invited to attend the meeting. They are asked to watch the bulletin board for the time and place to meet for a ride to Minneapolis.

**Sale Continues at FALLS SHOE STORE**  
EVERYTHING REDUCED FROM 10 TO 50%.

Such famous names as  
**CONNIE, JACQUELINE, CROSBY SQUARE,**  
and **FREEMAN.**

**FALLS SHOE STORE**  
NEXT TO FIRST NATIONAL BANK

# Debate Tourney Will Draw More Than 100 Entries

More than 100 persons will take part in the annual "B" Debate Tournament at River Falls Jan. 19, it was announced today by Arlen Christensen, student chairman in charge of arrangements.

In addition to 50 debate teams entered in the meet, approximately 16 persons will take part in after-dinner speaking. Among colleges participating are the University of Minnesota, the Wisconsin State Colleges at Eau Claire, Oshkosh and Superior, the Minnesota State Teachers Colleges at St. Cloud, Mankato and Moorhead, Iowa State Teachers College at Cedar Falls, Wartburg College, St. Olaf College and St. Thomas College.

**PARTICIPATION IN** the tournament is limited to those who have taken part in no more than three previous tournaments.

Debate teams from River Falls entered in the tournament include Honey Berg and Noel Falkofske, Lewis Schoenwetter, Richard Leach and James Galvin, Bruce Foster and Mike Dodge, Kenneth Bergquist and Paul Streif, Mark Wyman and Gene Peterson, Richard Doetkett and Sue Christenson, and Jerry Anderson and Carl Sharp. Additional teams are yet to be selected.

**TAKING PART IN** after-dinner speaking will be Mr. Doetkett and Mr. Schoenwetter.

Registration is scheduled for 8 to 9 a.m. with three rounds of debate preceding luncheon at the Charbel. Immediately after luncheon the first round of after-dinner speaking is scheduled. This will be followed by two more rounds of debate and the final round of after-dinner speaking.

Trophies will be awarded to the top debate team and the best after-dinner speaker. A tournament team of the four top-ranking debaters also will be announced at the closing session in the Little Theatre at approximately 5 p.m.



Straight "A" students shown are: front row, left to right, Judy Knopps, Bev Domaika, Donald Johnson, Bill Dobson and Ronald Hayden; back row, left to right, Betty Olson, Dean Johnson, LeRoy Anderson and William Hagestad. Not pictured are Jerome Benson, Michael Dodge and Annie Robbins.

## HONOR ROLL— (Continued from Page One)

hill, New Auburn; William Hagestad, River Falls; Mark Haugsby, Hawkins; Dean Johnson, Pasadena, California; Donald Johnson, Milwaukee; Miles Johnson, Frederic; Thomas Johnson, Turtle Lake; Judy Knopps, Menomonie; Carol Korsmo, Shiocton; Shelby Ludwig, Clayton; Shirley Luebker, Woodville; Kenneth Lundeen, Frederic; Calvin Martell, New Richmond; Daniel Michaelson, Balsam Lake; Douglas J. Mountain, Ellsworth; Carol Nalberg, Cadott; Tenny Neprud, Boscobel; Carla Nordeen, Centuria; Dale O. Pearson, Cumberland; Dixie Prine, Ellsworth; Ethel Ryan, Grantsburg; Judith Simonson, River Falls.

**ELEMENTARY EDUCATION:** Joanne Crownhart, Ellsworth; Joan Drier, Gilman; Robert Dykstra, Waldo; Mary E. Jensen, River Falls; Iola Johnson, Stillwater, Minn.; Karen Johnson, Rice Lake; Betty Olson, Nye, Ella Osits, River Falls; Erik Pederson, Luck; Annie Robbins, River Falls; and Janet Wihela, Iron River.

# COLLEGE RATES TOPS IN CITY TOURNAMENT

River Falls continued to dominate the Twin City League in debate Thursday, taking the top two places in the tournament and ending in a tie with three other schools for third place.

Undefeated were the teams of Carl Sharp and Jerry Anderson in first place and Honey Berg and Noel Falkofske in second place. The teams had 37 and 36 points, respectfully. River Falls was the only college to have two undefeated teams in the total of five.

In third place was the team of James Galvin and Richard Leach which won two and lost one debate for a total of 35 points. Both the second and third place teams had not participate in intercollegiate debate previously.

Taking part in the tournament were 36 teams representing Mankato, St. Thomas, St. Cloud, River Falls, Gustavus Adolphus, St. Olaf, and Augsburg, and the University of Minnesota.

This was the third tournament in a row in which River Falls took top honors.

# REFUGEE FUND DRIVE OFF TO \$850 START

More than \$850 in cash and pledges was raised on the opening day of the drive to raise funds to award a four year scholarship to a Hungarian refugee student.

The money was raised Thursday, December 20, at an all-school assembly and afternoon dance. Estimated cost of the scholarship is approximately \$4000.

Making pleas for the scholarship was Anna Szedlak, a Hungarian-born student now a freshman at River Falls, and Mike Fleming, sophomore from Frederic, a member of the Refugee Scholarship Committee.

Miss Szedlak and her family fled their native country in 1946 shortly after it was occupied by Russian troops.

Plans for additional fund raising activities are being made by members of the committee headed by Arlin Albrecht, sophomore from Chippewa Falls. Pledge cards are still available in the college cafeteria for those who wish to contribute to the project.

# FALLS THEATRE RIVER FALLS

AIR Conditioned  
The "Pic" of Pictures.

January 14 and 15  
"THE MOUNTAIN"

January 16 and 17  
"BETWEEN HEAVEN & HELL"

January 18 and 19  
"LIL ABNER"

plus  
CARTOON CARNIVAL

January 20, 21 and 22  
"LOVE ME TENDER"

## for 1957 RESOLVE

TO BUY YOUR SHOES NOW AT

### BIG SAVINGS

DURING LEWIS SHOE STORE'S

## GIANT CLEARANCE SALE

NOW IN PROGRESS

Heels and flats for the ladies

\$2.88 \$3.88 \$5.88

Values to \$10.95

Oxfords and loafers for the men

\$3.88 \$4.88 \$5.88

Values to \$11.95

plus bargain table prices as low as 88c

## LEWIS SHOE STORE

WITH X-RAY FITTING



# WINSTON

has the answer on flavor!

No guesswork here! Your first puff will tell you, *this* filter cigarette *tastes* like a cigarette! There's rich, full flavor here. And a pure, snowy-white filter that does its job so well the flavor really comes through to you. That's why Winston is America's favorite filter smoke. Make it yours!

Smoke **WINSTON**...enjoy the snow-white filter in the cork-smooth tip!

R. J. REYNOLDS  
TOBACCO CO.,  
WINSTON-SALEM, N. C.



## Play by Shaw of American Revolution Is Scheduled for February Production

A drama of the American Revolution by a British playwright is scheduled for production here Feb. 18, 19 and 20.

Casting has been completed and rehearsals have been underway this past week for "The Devil's Disciple" by George Bernard Shaw.

Dr. Blanche Davis who directs the play says "Shaw, in his humorous, cynical way, makes General Burgoyne a very different character from the one usually found in history books." The work deals with one scene of the American Revolution.

About a third of those in the cast are inexperienced in college dramatic work, Dr. Davis said, although most of the leading roles are played by veterans of other productions.

The complete cast follows:

- Richard Dudgeon
- Douglas Krug
- Mrs. Annie Dudgeon
- Julia Kaminski
- Christopher ----- Paul Streif
- Lawyer Hawkins
- Norbert Teclaw
- General Burgoyne
- Michael Fleming
- Judith Anderson
- Honey Berg
- Anthony Anderson
- Thomas Holter
- Essie ----- Toloa Starr
- Major Swindon
- Gerald Johnson
- Sergeant ----- Russell Titel
- Uncle William Dudgeon
- Henri Elzinga
- Uncle Titus .. Frank Holcomb
- Soldiers, Hessians, Dragoons
- Gerald Mielke, Alex Romanowski, Michael Cotter, Robert Murphy, Jerry Best, Alan Krause, Henri Elzinga, Noel Falkofske, Greg Griffin, and Jerry Smith.
- Mrs. Titus Dudgeon
- Beatrice DeGidio
- Mrs. William
- Sue Christenson
- Chaplain (Rev. Brudenell)
- Jerry Best
- Executioner .. Roland Grothe
- Townswomen
- Sara Garnett, Ora Fast, and Ramona Robelia.

## Young Democrats Plan Dance for Wednesday

A record dance will be sponsored by the Young Democrats Wednesday evening. The dance is scheduled from 8 to 10:30 p.m. in the Student Activity Center.

The dance serves a dual purpose, according to Dick Kinney, president. It is in accord with the purpose of the social committee in promoting a student get-together and proceeds will be used to help defray cost of the Young Democrats' trip to the convention in the spring.

### WSSC STANDINGS

	W	L	Pts.	Opp.
Stevens Point	2	0	167	149
La Crosse	2	1	264	253
Eau Claire	2	1	263	251
Milwaukee	2	1	247	241
River Falls	1	1	179	170
Superior	1	1	158	164
Platteville	1	1	172	165
Oshkosh	1	2	206	217
Stout	0	2	153	179
Whitewater	0	2	135	155

### Saturday's Scores

- Eau Claire 92, River Falls 89
- La Crosse 94, Superior 77
- Oshkosh 68, Whitewater 55
- Platteville 96, Milwaukee 80

### SPORTS IN A NUTSHELL—

(Continued from page 5)

Speaking of contracts reminds me of the incident that happened to Hank Aaron of the Braves before the beginning of last season. Henry, upon receiving his contract in the mail and discovering the much-too-low salary, promptly mailed the contract back to the Milwaukee front office along with the reply, "You must have made a mistake and sent me Danny O'Connell's contract."

## RF-Notre Dame Debate On Parity Issue Heard By Approximately 600

Before an audience of approximately 600 visiting high school students, townspeople, and college students, River Falls and Notre Dame team, Wednesday evening, debated the question "Resolved that Basic Agricultural Crops Should Be Supported by 90 Percent Parity."

Taking the affirmative side of the question for River Falls were Mary Lou Jensen and Dick Waak, juniors. Arguing the negative side for Notre Dame were Stan Kuser, senior and John Hirschfeld, junior.

The affirmative team based its arguments on claims that the present flexible price control program aims at wiping out surpluses necessary in the event of war or unfavorable crop conditions, that it has lowered farm income and caused a migration of farm workers to the cities, that it is causing farmers to "mine" their land, and that it creates a condition of "insecurity" for the farmer.

The negative team argued that surpluses are costing the taxpayers a million dollars a day for storage, that 90 percent of parity plan leads to artificial prices for crops no longer in demand, and that an anticipated 15 percent increase in production will meet increasing population needs.

## Music Notes



by Glenn Sandve

Keep this date in mind, February 28, 8 p.m., as the night when the college orchestra will present a special program of musical entertainment.

The program will be the 1956-57 debut for the orchestra, which hasn't performed publicly for several years. Also featured will be several musical specialty numbers.

Nicholas Jadinak, conductor of the orchestra, urges that all wind instrument players who have been contacted to play with the orchestra attend rehearsals on Monday evenings at 7:00.

A good crowd at this program could be the very spark needed to promote greater interest in the college's orchestra.

I think I can speak on behalf of the entire music department in thanking the student body for the fine turnout at the band and choir concerts held before Christmas.

## DORM CONSTRUCTION—

(Continued from Page One)

ion building on the River Falls campus.

Both the union and the dormitory are self-liquidating projects. The loans will be repaid to the government from income and without cost to the taxpayers.

## ARE YOU WHO YOU THINK YOU ARE?

Check your class picture in the Meletean office for correct name and city. This must be done to insure against mistakes. Deadline is next Monday.

# The 'Charbel

Now under new management

NEW HOURS IN EFFECT —

Monday through Thursday — 11 a.m. - 12 p.m.

Friday and Saturday — 11 a.m. - 1 a.m.

Sunday — 11 a.m. - 10 p.m.

FEATURING

Noon luncheons at 50c and 85c

Evening luncheons at 60c

# The 'Charbel

DIAL 9471

CASCADE & S. MAIN

JOHN SOULIGNY, Owner

# Sticklers!

WHAT IS A JOSTLED POET?

JOHN COLLINS, Jarred Bard  
ST. PETER'S COLLEGE

WHAT ARE DANCING ERRORS?

TED BIXLER, Waltz Faults  
FLORIDA STATE

WHAT IS A NORSEMAN WHO MISSED THE BOATS?

BOB CUDDINEE, Hiking Viking  
ST. LOUIS U.

WHAT IS WIND FROM A RAGWEED PATCH?

HAROLD FISCHBECK, Sneeze Breeze  
U. OF COLORADO

WHAT IS A MAN WHO WON'T USE ANYTHING BUT A MATCH AT LIGHT-UP TIME?

(SEE PARAGRAPH AT RIGHT)

**LIGHTING A LUCKY?** You might rub two sticks together—but it'll take you hours to see the light. You might use ten-dollar bills—if you've got money to burn. Or you might insist on matches—in which case you'll be a *Lighter Slighter!* Any way you light it, a Lucky tastes out of this world. It's all cigarette... nothing but fine, mild, good-tasting tobacco that's **TOASTED** to taste even better. Try a Lucky right now. You'll say it's the best-tasting cigarette you ever smoked!

DON'T JUST STAND THERE...  
**STICKLE! MAKE \$25**

Sticklers are simple riddles with two-word rhyming answers. Both words must have the same number of syllables. (No drawings, please!) We'll shell out \$25 for all we use—and for hundreds that never see print. So send stacks of 'em with your name, address, college and class to Happy-Joe-Lucky, Box 67A, Mount Vernon, N. Y.



# Luckies Taste Better

"IT'S TOASTED" TO TASTE BETTER... CLEANER, FRESHER, SMOOTHER!

WHAT IS A CRAZY KILT?

RUDOLPH KAGERER, Mad Plaid  
PURDUE

WHAT IS A MAN WHO STEALS GLASSWARE?

JIM MAYNARD, Pitcher Snitcher  
IOWA STATE COLLEGE

WHAT IS A NEW ENGLAND LOVER BOY?

TONI ROBB, Maine Swain  
MICHIGAN STATE