

Special
Edition

The Student Voice

For High
School Seniors

MONDAY, MAY 4, 1953

WISCONSIN STATE COLLEGE
RIVER FALLS, WISCONSIN

VOLUME XL, NO. 15



THE INDUSTRIAL ARTS BUILDING houses the college woodworking, metalworking, and print shops, and the engineering drawing room, classrooms, and farm power labs.

HATHORN HALL, the girls' dormitory on campus, is RFSC's newest building, pending completion of the new library.



NORTH HALL contains administrative offices, men's gymnasium, the main auditorium, the campus training school, science labs, classrooms, men's lounge, and the swimming pool.

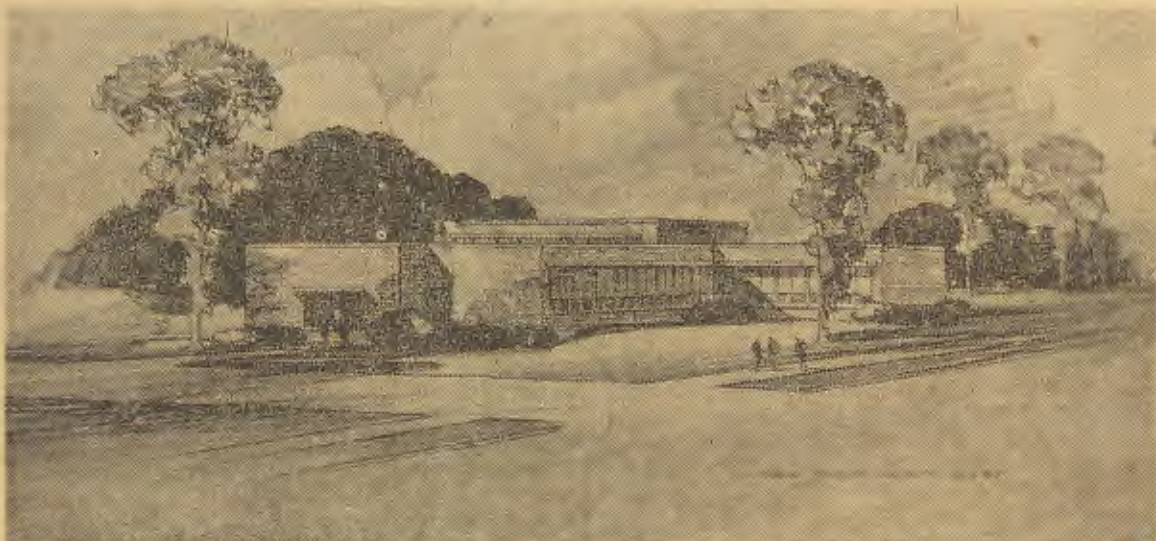
This issue of the Student Voice is published for high school seniors in the area served by Wisconsin State College at River Falls. It attempts to give the student an idea of what this college is like—briefly to describe for you the campus, the classes, the activities, the dormitory life, and in general what River Falls has to offer to students interested in attending college.

The paper is written primarily from the students' point of view. It does not attempt to give a complete, detailed picture. More information may be obtained by writing to:

Registrar
Wisconsin State College
River Falls, Wisconsin.



SOUTH HALL, oldest building on campus, houses the library, cafeteria, girls' gym, classrooms, the Social Room, Dean' offices, and the visual aids room.



THE CHALMER DAVEE LIBRARY will be completed late this year. Costing \$650,000 to build, it will contain several rooms for special activities, a Little Theatre, reading rooms, book stacks, and a reserve book room. The library is named after River Falls member of the Board of Regents.



THE HEALTH COTTAGE, located on the South campus, is under the supervision of a full-time nurse, and provides complete medical services for River Falls students.

From Our Files

1 Year Ago
A physics class has been experimenting in atomic research, in a course called "Introduction to Atomic Physics".

4 Years Ago
The Masquers will present the Broadway hit, "Angel Street" as their spring play.

7 Years Ago
Dr. Eugene H. Kleinpell has been selected as the successor to President J. H. Ames. Dr. Kleinpell will take over his duties as president of this college on July 1.

11 Years Ago
A free tennis court dance will climax the second annual Spring Frolic.

20 Years Ago
The girls' basketball squad defeated the faculty women's team in a very unusual game, played part of the time with a stepladder. Mary Bradley and Irma Hathorn were the high scorers for the faculty team.

Senate Minutes

The meeting was called to order by Pres. Ken Nehmer. The secretary's minutes were read and approved.

Rita Ruemmele, Jim Belisle, and Gayle Moen, newly elected members of the Senate were present at the meeting. Also present were Mr. Johnson, Mr. Albert, and Mr. Garnett, all members of the Athletic Council.

"Rec" Day was discussed in great detail. More jobs were found to be done and more organizations were called upon to assist with this work. Each organization president will be responsible for the turn-out of the membership for his own organization. These presidents will be asked to come to the next meeting of the Student Senate to coordinate the activities for "Rec" Day. The Faculty will be asked to share with the students in planning and carrying out these various projects.

The meeting was adjourned.

Secretary
Margery Deans

Present: Nehmer, Easton, Westberg, VandeBerg, Garnett, Wyman, Allie, Strain, Deans.

Critic's Corner

Otters
by Jim Cerello

Two trained otters and their keeper, Emil Liers, appeared in program April 23, in the college auditorium. Mr. Liers, author of a recent book about his friends, has the only Otter Sanctuary in the world. An ardent naturalist, Mr. Liers showed films on the activities and oddities of the otters, and supplied dialogue.

The movies were excellent and interesting to watch. The two guest otters were extremely affable and very adept at swimming, even in a confined area.

The entire program was good until Mr. Liers fondly kissed the otters on the whiskers and began lecturing how helpful otters are to wild life in general. The campus school children enjoyed the program and had a swell time watching Mr. Liers and his otters at play.

Musicians

An appreciative though small audience heard the final concert last week to be directed by Miss Cara Wharton, who is retiring from the college faculty this year.

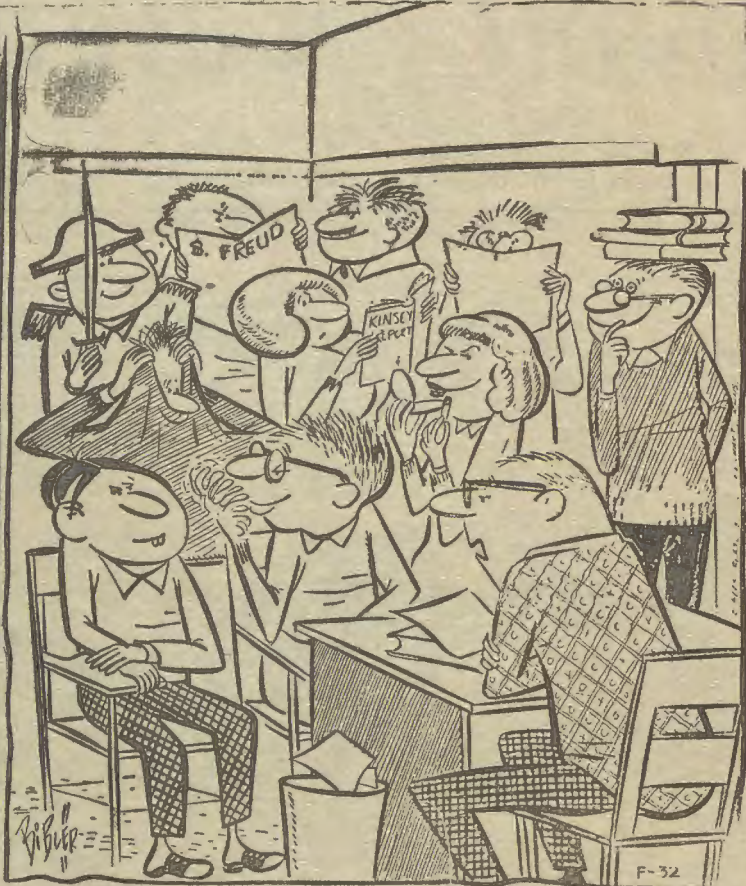
Miss Wharton's pupils performed expertly on the piano and organ. Elsie Nordby, soprano soloist, captivated the audience with her wistful "Love Song," by Brahms.

Particularly impressive among the piano numbers was "Claire de Lune", played by Sally Malone, and "Polonaise", played by Joan Grandinetti, as well as "Concerto, First Movement," played by Louise Thompson.

Interesting to listen to were the piano-organ selections: "The Young Prince and Princess", played by Jean Allie and Joan Hanson, and Miss Malone and Miss Wharton's version of "Kamenoi-Ostrow."

LITTLE MAN ON CAMPUS

by Dick Bibler



"I'm sorry young man but this class is only open to psychology majors."

Why Go to College? Consider These Facts Before You Decide

by Myron Gayle Moen

Why go to college? That's a funny question but it always manages to find someone who can't answer it. It was while serving in the armed forces with the U. S. Marines that I finally found the answer.

When I traveled across the United States I suddenly realized how big our country really is and how many people there are vying for the different professional positions to be had. That old stereotyped idea one gets from the movies of the hero who suddenly finds himself in a top executive position, or the girl that marries a "million dollar girdle manufacturer", is far from the true picture. Sure, there are good jobs to be had. Lots of them! But there are also lots of people standing in line to get them. I don't have to tell you who does get the job in the majority of the cases, that is. Why of course! It's the college graduate.

Now keep in mind the fact that the best jobs are not always those that pay the most money. No! To be sure, the job that most perfectly fits a persons desires, personality, education, interest, capability and main interest in life is the "best job" for him. In other words you must like your job more than any other occupation you could have in order to call it your real life's work, regardless of whether it allows you to drive a Cadillac or a Ford, eat caviar or wieners.

Let's repeat our question again. Why go to college? That's an

easy thing to answer. College gives the really interested student the opportunity to get a broad background in all of the varied subjects he can think of. Of course it takes a little work on the part of the student himself. Another important point to remember is the specialization that can be derived from work inside the college classroom, and outside of it.

I know people who are holding down what can be considered first rate professional positions in television and radio who have not had any college. They are mainly announcers and production men who have gone for a short period to some school specializing in one particular phase of radio or TV. The fact that their field is becoming attractive to more and more college graduates makes their tenure a little uncertain.

I feel quite sure that this same situation prevails throughout all of the thousands and thousands of occupations we have today.

Of course I'm talking about the person who does go to school with the purpose of "learning not just for "credit". How does this affect you? Think it over. I don't care whether you're going to shine shoes, deliver milk, work in Washington, sell cars, buy cars, sell merchandise, run a newspaper, act on the stage or what have you I can, with all honesty, say, "go to college." When your Ma or Pa says "go on to school" they know what they're talking about—Take it from me, a freshman at Wisconsin State College at River Falls.

Faculty, Students Quarrel Over Uses For Cubicles to Be Vacated by Books

by Miss Muffett

Early this fall the Andrew Carnegie Library will be ready for the library staff to move their 37,000 books into the new building by mule train. Question has arisen among the various departments as to what will become of the suites of rooms now housing the present library.

Among those rooms which will be available are the spacious and sumptuous second floor browsing room and the subterranean cave in the cellar, not to mention the rare book cubicles, on third floor, back hall.

Chief argument has come up over what is now the textbook library. The Communications department insists that the room be partitioned off for use by college committees, while the speech department has drawn blueprints of the space for use as a speech

correction clinic. Each student at RF who has taken speech correction or Speech 50 will be allotted a 4 by 3 space in which to work closely with his speech cases. The agriculture department has submitted its bid for the room as it is running out of space for chicken roosts.

Several fist fights have taken place among faculty members over proposed uses of the main room on second floor. The art department demands its use as an exhibit gallery for extension students. The Modern Dance group would like to use it as a rehearsal room because of the excellent lighting and spacious views.

The biology department has announced that it will import an Antarctic whale for dissection by the Comparative Anatomy class if it is given the floor space on

The Editor Speaks

Letter to High School Seniors

Dear High School Seniors:

This issue of the Student Voice is dedicated to you. It attempts to give you some idea of what college life at River Falls State College is like.

The accent in this issue is on activities and organizations around our campus because we feel you're probably just a little tired of hearing about classes. And besides, our college catalog covers that nicely.

This editorial is devoted to our newspaper at RFSC, The Student Voice. We hope it gives you some idea of what goes on in the Voice office, what goes into the Voice, and what opportunities it offers its staff members.

The Student Voice comes out every two weeks, on Monday afternoons. It is usually a four-page paper, with perhaps four or five six-page issues each year. Special issues are those published at Homecoming, Winter Carnival time, and on April Fool's Day.

The Voice has a circulation of 1100, including all the students and instructors at RFSC, the students in extension courses, alumni, and servicemen, to whom the paper is sent free.

Putting out a newspaper like the Voice is a tremendous job. It is entirely written and edited by River Falls students, and much of the printing preparation is done by them. It is even more of a job than usual this year, because our staff is one of the smallest a Student Voice has ever had.

So all of us have been extremely busy putting out the Voice. It has meant working late nights, Sunday afternoons, breaking dates, and giving up quite a few things to get the paper out on time.

Why do we do it? Well, it isn't for the money: the editor has figured his salary out at 18 cents an hour and the business manager's eight per cent of advertising revenues only amounts to about one dollar an issue.

We do it rather because we feel a student newspaper is in many ways a most important part of a college. It is the most important medium of college news. It is one of the best places to become familiar with your classmates, through feature stories and news articles about them. It keeps students informed on faculty and alumni activities and what goes on behind the everyday scenes of RFSC life. And it provides an excellent medium for the public expression of student opinion.

For the RFSC students who elect to work on its staff, the Voice offers experience in reporting, editing, copyreading, business, advertising, circulation, printing, and running your legs off. And it provides that sometimes debatable satisfaction of going down to the cafeteria Monday afternoon and watching people avidly reading that article you worked so hard on a couple of days before!

We hope that if you decide to come to college next fall that you will come to River Falls. And we hope that if you do come here you will stop in and see us in our office on the first floor of South Hall. We'd like you to work for us, and we think that if you decide to, you'll find your efforts on the Voice one of the most rewarding activities you could enter into at River Falls.

Sincerely yours,
The Editor

Costs Are Inexpensive--- YOU DON'T HAVE TO BE RICH TO GO TO RFSC

You don't have to be rich to go to college—at least not to Wisconsin State at River Falls. The college prides itself on offering maximum facilities at minimum expense.

There is no tuition and students do not have to buy books. They are supplied by the textbook library. The incidental fee is \$30, the student activity fee is \$10. The latter entitles you to copies of the Student Voice, admission to all athletic events, concerts, and lectures sponsored by the college, the Meletean (yearbook) and most of the dances.

Depending on where you live, your room will cost you from \$36 to \$54 a quarter. Depending on what and how much you eat, your meals will run from \$7 to \$9 a week. That does it. Those are the costs of going to college.

Letter to the Editor

Dear Editor:

The election a week ago last Thursday for Student Senate was a disgrace to the student body. Out of approximately 550 students in the college only 260 students took time to vote for their delegates to their student government.

This is the poorest turn-out for any school election all year. Even for homecoming queen, homecoming chairman, or winter carnival chairman more students voted. But yet when an even more important election comes up students fail to turn out to vote.

Why does this happen? I myself don't know but I sure won't worry for anyone who gripes about our Senate. I sure hope that this isn't an example of our school spirit.

An Ashamed Student.

THE STUDENT VOICE

Member
Associated Collegiate Press

The official student publication of the Wisconsin State College at River Falls, Wisconsin. Published semi-monthly during the school year except for vacations, holidays, during exams, etc.

Subscription rate, \$2.00 per year.

Editor ----- John Reque
Business Manager ----- Jim Cerello
Photographer ----- Cliff Harmann
Circulation ----- Blake Murray,
Arlene Schoepper
Wayne Wolfe ----- Advisor



Gayle Moen Beverly Rasmussen Jim Belisle Rita Ruemmele

Four Students Win Senate Seats; Balloting Light

Four RF students—two juniors and two freshmen—were elected to the 1953-54 Student Senate on April 23, but the election of one of them as class president still leaves the Senate one member short for next year.

Elected to the Senate in one of the lightest votes this year were Rita Ruemmele, Jim Belisle, Beverly Rasmussen, and Gayle Moen. The freshman class picked Moen for its next year's president a few days later, which automatically gives him a seat on the Senate.

"We'll decide how to pick another Senator at our meeting tomorrow night," said Senate President Ken Nehmer. "We can have another election, let the freshman class pick another president, or take the person who came in fifth in the Senate election in place of Moen."

Rita Ruemmele, a junior from Hudson, is the president of the College Women's Association this year. She is majoring in elementary education, and is a member of A.C.E.I., the Newman Club, the Young Democrats, and Sigma Chi Sigma. Rita is also co-editor of the 1953 Meletean.

Jim Belisle, who was King of the 1953 Winter Carnival, is a junior from Menomonie. Jim is on the basketball squad and a member of the "R" Club. He also belongs to the Young Republicans and the YMCA. His major is social science.

Beverly Rasmussen is a freshman majoring in elementary from Amery. She is active in LSA, YWCA, Hoedowners, and Gamma Delta.

Gayle Moen is a freshman transfer from the University of Minnesota. Gayle is an ex-marine from Hammond, majoring in speech. He is the announcer for the college radio program presented weekly over KAAA, Red Wing, and is a member of the Student Voice staff.

Margery Deans, Bob Strain, and Jenny Sue Garnett, present Senators, will continue in office next year. Also a member will be Bob Gueldner, recently elected president of next year's senior class.

Band Plans Outside Recital

Another in a series of outdoor band concerts will be presented Thursday, May 7, on the lawn of North Hall by the Wisconsin State College Band under the direction of Nicholas Jadinak.

The band concert to begin at 7:30 p.m., is dedicated to National Music Week.

The complete program follows:
 Apollo March ----- Anton Bruckner.
 Slow March from "Scipio" ----- Handel
 Ecossaise (dance music in 1810), Beethoven.
 Polonaise (Polish dance music), Beethoven.
 Italian Polka ---- Rachmaninoff
 The Four Freedom March ---- Goldman.
 El Capitan March ----- Sousa
 Folk Song Suite (England) ---- R. Vaughan Williams
 a. March—"Seventeen Come Sunday."
 b. Intermezzo—"My Bonnie Boy."
 c. March—"Folk Songs from Somerset."
 Happy Go Lucky March ----- Goldman
 The Three Trees (Novelty) ---- McNaughton.
 With The Bands and Banners March ----- Rosenkrans
 Manhattan Beach March -- Sousa
 On The Road to Mandalay ---- Speaks
 Richard Meulemans, vocalist
 Stars and Stripes Forever - Sousa

FRESHMEN ELECT MOEN

Gayle Moen was elected class president last week when the freshmen met to pick their class officers for next year.

Other officers elected were Bernard Decker, vice president; Elsie Nordby, secretary; and Ramona Thompson, treasurer.

Chippewa Falls Band To Give Concert Here

Variety in this year's convocation programs will be provided Thursday, May 14, when the Chippewa Falls High School Band appears in the college auditorium at 11 a. m.

Directed by Howard Elliott, a graduate of River Falls, the band is composed of 60 musicians.



Marilyn Murphy finds John Bos a most romantic lover indeed in "Arms and the Man," the Masquers play to be presented in the auditorium Wednesday, May 13.

Masquers Rehearse Shaw Comedy, 'Arms and the Man' for May 13

"Arms and the Man", a "romance in politics in morals", to quote its author, George Bernard Shaw, will be the next production of the Masquers. The comedy will be presented in North Hall auditorium Wednesday, May 13.

"The play is the gayest and most often produced of Shaw's comedies," said Dr. Blanche Davis, director. "A scene from 'Arms and the Man' was presented on television just yesterday on the 'Omnibus' program."

Set in Bulgaria while that country was at war with Serbia in the early twentieth century, 'Arms and the Man' is a satire on the romantic interpretation of war. It concerns a mercenary Swiss soldier, played by John Bos, who, when faced with capture at the hands of the Bulgars, is

sheltered by a beautiful lady with romantic notions of military glory. Marilyn Murphy plays the young lady.

Herb Voss is cast as a sentimental and aristocratic soldier and lover. Playing opposite him is the flirtatious maid, Dorothy Binkowski. The heroine's mother and father are played by Marlene Martalock and Orlan Larson. Kaye-Don Tibbetts will play Nicola, a servant.

Curtain time for the play is 8 p.m.

'Greek Play Night' May 6 Features 'Medea', 'Helena's Husband'



Marie Holmes in the title role and Gayle Moen as Jason as they appear in the Greek tragedy "Medea".

"Greek Play Night" hits the campus Wednesday, May 6, when two student directed plays are presented in North Hall auditorium. The Greek tragedy "Medea" and the modern comedy "Helena's Husband" are the scheduled productions.

"Medea", directed by James Cerello, is an ancient play by Euripedes, telling the story of a woman's vengeance upon her husband when he jilts her for a princess. The title role will be played by Marie Holmes. Others in the cast are: Jason, Gayle Moen; Nurse, Carrie Dorsey; Attendant, Dorothy Binkowski; Narrator, Bob Jensen; Creon, Jim Cerello; and Aegeus, Norville Lansing.

"We're planning a highly stylized stage setting," said Director Cerello. Our costumes will be those of Ancient Greeks." Curtain time for "Medea" is 8:00 p.m.

"Helena's Husband", directed by Thelma Erickson, will be presented immediately after "Medea". The play is a modern parody on the Trojan War, suggesting that Helen of Troy was kidnaped be-

(Continued on page 4)

Students Plan Campus Cleanup on 'Rec Day'

Rakes, paint brushes, and spades, plus a little elbow grease will be put to use on the River Falls campus May 12. That date has been set aside by the Student Senate as "Rec Day." Students and faculty are being asked to co-operate in a program to improve the appearance of the campus.

BLOOD DONORS ASKED TO SIGN UP THIS WEEK

Wednesday, Thursday, and Friday, May 6, 7, 8, are the dates to sign up for donating blood to the Red Cross. The Red Cross Bloodmobile will be on campus May 25.

The F.F.A. will be in charge of arranging time for students to donate their blood. At the time you sign up for donations those under 21 will be requested to take home parental permission blanks to be signed by their parents. These blanks are to be returned either just before donating or else they should be turned in to Dean Rozehnal.

All students able to donate blood are requested to sign up in South Hall sometime during May 6, 7, or 8.

C. W. A. Arranges RF Mother's Day

Mother's Day will be observed on the RFSC campus Friday, May 15, when mothers of students are invited to spend the day at River Falls. A luncheon, tour of the campus, program and reception are being arranged for the mothers.

Reservations for flowers and the luncheon will be taken on the first floor of South Hall this week. Registration will be in the Social Room just before the luncheon, which will be in the cafeteria at 1 p.m. There will be time for students to show their mothers around the campus before the program in the recreation room of Hathorn Hall at 2:30.

Mrs. John W. Harris, wife of the Methodist minister in River Falls, will speak to the students and their mothers at the afternoon program. Mrs. Harris was recently named Wisconsin's "Mother of the Year."

Also included on the program will be a male quartet, the Folk Singers, members of the Modern Dance group, who will do a version of "Clementine," a dance by Jenny Sue Garnett, and a girls trio from Hathorn Hall. Kathy Miller will emcee the program.

(Continued on Next Page)

Classes will be held until 10 o'clock when an assembly is scheduled in the auditorium.

"The assembly will be entertaining as well as informative," say Bob Strain and Jenny Sue Garnett who will be in charge of the meeting.

Main purpose of the assembly will be to present the schedule of projects to be undertaken.

Jobs already scheduled are the planting of trees around the boot-ball field, painting lines on the tennis courts, clean the store-room under the stairs in North Hall, taking up the curbstones around the trailer housing section on campus and filling in the slight excavations with sod.

Also a general cleaning of the campus will be needed.

John Gage has announced that he will serve a "picnic lunch" between 11:00 and 12:30. The meal will be served in "picnic style" and can be taken outdoors to be eaten. At 3:00 the athletic department promises some entertainment with a softball game between a faculty and a student team. To top off the day of "Recreation" there will be 'recreation' that evening. A dance will be held from 8:00 until 12:00 in the gymnasium in North Hall. The "TOONFUL TUTORS" will do the "tootin'".

John Oedsma, Ida Larson to Reign Over Spring Prom

John Oedsma and Ida Larson will reign as king and queen at the annual Junior Prom at RFSC, to be held Saturday, May 9, in the North Hall gymnasium.

Dancing will be from nine to one with Joe Brabec and his orchestra from St. Paul providing the music.

The junior class has chosen "Old Dutch Garden" as the theme for the prom, and the decorating committee is busy assembling the materials for the gym decorations. A Dutch windmill will be the main feature of the decorations for the Prom.

Tickets will be on sale for the Prom this week at \$2.40 a couple, chairman Jim Bourne has announced.



"Helena's Husband", with Betty Wiskerchen as Helena and Tom Haugen as Menelaus, her husband, is the second of the one-act plays to be given on May 6, "Greek Night."



Marilyn Murphy, Mary Sveen, and Mae Wiskerchen won first prize at the annual Puff-Pant Prom, April 17, masquerading as three monkeys.

Campus Calendar

May 6 "Greek Night"—auditorium
Baseball, Stout, there.
May 7 Outdoor Band Concert,
7:30 p.m.
May 9 Junior Class Spring Prom
May 12 Baseball, Eau Claire,
there. "Rec" Day.
May 13 "Arms and the Man"—
auditorium.
May 14 Chippewa H.S. Band As-
sembly, 11 a.m.
May 15 Mother's Day.
May 16 Baseball, St. Cloud, here.
May 20 "The Boor"—Social Room.
Baseball, Stout, here.
May 21 Outdoor Band Concert,
7:30 p.m.
May 22 "Hoedown".
May 23 Baseball, Winona, here.
May 25 Bloodmobile on campus.
May 28 Honors Day. Outdoor
Band Concert, 7:30 p.m.
May 31 Commencement.
June 1-5 Final Exams.

NAEETH NAMED TO PLANNING GROUP

Hardean Naeseth of the Wis-
consin State College faculty and
YMCA adviser at River Falls re-
cently was named to the planning
committee of the Third Wiscon-
sin Faculty Conference on Chris-
tianity and Scholarship. The con-
ference will be held at the Pres-
byterian Student Center on the
University of Wisconsin campus
on Friday and Saturday, October
16-17.

Dr. George F. Thomas of
Princeton University will be the
guest speaker on the conference
theme of "Religious Perspectives
of College Teaching." Dr. Thomas
is author of the Hazen Founda-
tion pamphlet "Religious Per-
spectives of College Teaching"
and is chairman of the National
Faculty of Christian Fellowship.

Prof. Philip N. Joranson, Bi-
ology Department at Beloit Col-
lege is conference chairman and
the secretary is Mr. Alwyn M.
Louden, Associate Secretary of
the University of Wisconsin YM
CA. This annual conference is
conducted under the auspices of
the Wisconsin District Student
YMCA and YWCA.

Haessley, Swanson Wed

Announcement has been made
of the marriage of Eugene Swan-
son and Mary Jane Haessley,
which took place in Minnesota
early this year. Both Mr. and
Mrs. Swanson are juniors from
Ellsworth. He is majoring in
chemistry and she is a three-year
elementary student.

Newman Club Elects Murphy

Mary Murphy, sophomore from
Ellsworth, was picked as pres-
ident of the Newman Club for
next year when that organization
held its election last week. Other
officers chosen were Leroy Sch-
wan, vice president; Mildred Nar-
lock, secretary; and Colleen Ryan,
treasurer.

Falls Theatre

May 5-6-7
"PRISONER OF ZENDA"

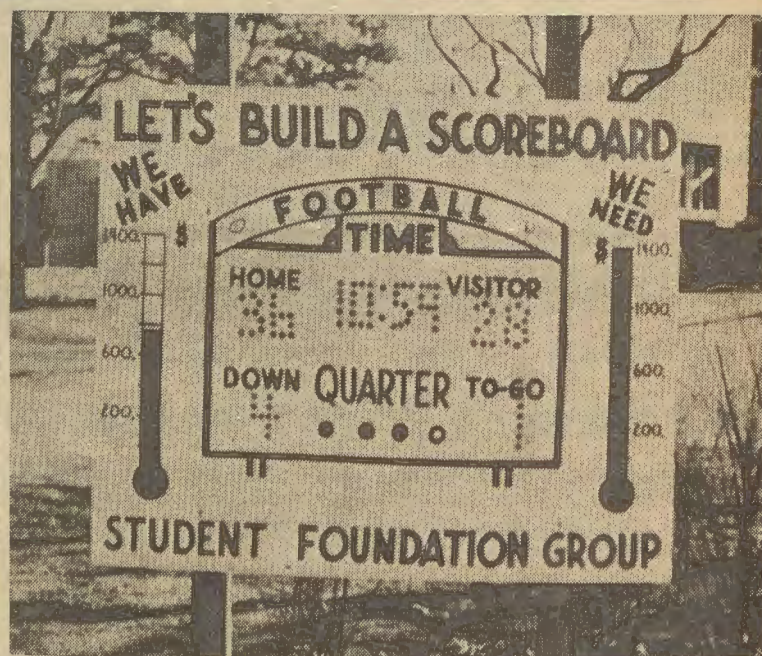
May 8-9
"CRAZY OVER HORSES"

May 10-11-12
"THE STOOGES"

May 13-14
"INVADERS FROM MARS"

May 15-16
"TROPIC ZONE"

May 17-18
"THE CLOWN"



The Student Foundation's project to raise \$1400 for an electric scoreboard for Ramer Field has passed the halfway mark, with \$750 being donated thus far. The sign pictured above is on the South Hall campus and was built by Leroy Schwan.

New Library Will Be 'Pride Of Campus' Next Year

Pride of the campus when it opens late this year will be the new \$650,000 library at RFSC. Construction began on the building last August, and workmen are thus far keeping ahead of schedule on the building. The contract specifies that the entire structure be

C. W. A. Considers Charter Revision

Girls, if you wish to have a say
in the way your organization
functions, attend the meeting on
Wednesday, May 6 at 11:00 in
the social room, the purpose of
which is to consider the proposed
revision to the C.W.A. constitu-
tion. All suggestions will be con-
sidered and the final revision will
be voted upon the following week.

The part C.W.A. will play on
"rec" day will also be discussed.

Mother's Day

(Continued from page three)

A committee of one mother, a
woman faculty member, and a
woman student will single out
mothers for special honors. Among
those to be honored will be the
mother of the most children who
have attended RFSC. The "Mother
of the Day's" name will be an-
nounced when her ticket is drawn
from a box. Mothers of senior
women will be specially honored.

A reception in the lounge of
Hathorn Hall will follow the
Mother's Day program. Members
of committees for Mother's Day
are: flowers and tickets, Doris
Lindemann, Cleo Nelson; decora-
tions, Elsie Nordby, Bev Rasmus-
sen; invitations, Lenore Hassett,
Blake Murray; program, Mary
Alden, Janet Thode; reception,
Sally Dickenson, Ann Turner,
Romona Thompson, Jean Adrian,
Pat Sheffield, and Faith Erickson.

Greek Plays

(Continued from page three)

cause her husband wanted to get
rid of her.

The cast of "Helena's Husband"
includes Betty Wiskerchen as
Helena; Tom Haugen as Mene-
laus; Bob Strain as Paris; Donna
Jones as Tsumu; and Halbert
Belt as Analytikos. Settings and
costumes for the play will also
be in the Greek tradition.

"The Chalmer Davee Library"
will be the name of the new struc-
ture, which is being erected just
east of South Hall. Dr. Chalmer
Davee is the Wisconsin State
Colleges Board of Regents from
River Falls. He has been respon-
sible for securing for RFSC a
good share of the substantial
building program now in progress
at the state colleges.

Except for a mezzanine floor
in the southwest corner of the
building, the new library is to be
a one-story structure. The mezza-
nine floor will house a music lis-
tening room, a special class room,
three seminar rooms, and a con-
ference room.

"The Little Theater" will be
the main feature in the basement
of the library. The theatre will
seat 200 people. Also included in
the basement will be a model
campus school library, a faculty
reading room, a staff lounge, an
audio-visual room, and a region-
al depository for the State His-
torical Society.

On of the first floor will be
the main reading room, a circula-
tion lobby, librarians' office, the
main book stacks, a reserve book
room, browsing room, and a lib-
rary methods class room.

Official Notices

Applications for the May 21
Selective Service College Qualifi-
cation Test must be submitted
to the Educational Testing Ser-
vice not later than midnight, May
11. The test will be the last of
this school year.

Organizations which elect new
officers for 1953-54 are asked to
turn in a list of these officers to
Senate must have the names of
The Student Voice, at the Student
all organization officers.

RICHARDSON CLEANERS

RELIABLE CLEANING SERVICE

Djal 2271

Married Students—21 or older

Auto Insurance 10|20|5

Only \$18.30 for 6 month

Full Coverage Available

FISHER INSURANCE AGENCY

South Main Street Phone 2296

Fancy Box Candy

Mother's Day Greeting Cards

FREEMAN DRUG STORE

Thrill
Mother
on her
Day

with a
Wakmann
Watch!

Give her this glamorous 17-jewel
Wakmann watch as an every-day re-
minder of your love and gratitude! So dainty,
so elegant... so completely dependable, thanks
to its brilliant Incabloc action! Anti-magnetic, anti-
shock, anti-damage... and backed with the famous
Wakmann One Year Free Repair Policy. There is
no nicer gift for Mother's Day!

No repair
cost for
one year

HOLMES JEWELRY

STUDENTS
EAT AT
CAFE GLADSTONE
GOOD FOOD
Reasonable Prices
H. D. & L. M. TOUSLEY



Picking up their mail from home are Betty Wiskerchen and Donna Sammons, both juniors and residents of Hathorn Hall, the girls' dormitory at River Falls State College.

Hathorn Hall Center for Women; Men Find It Pleasant, Too

Hathorn Hall, the new girls' dormitory at RFSC, houses about 90 women students, mostly freshman. Hathorn is rapidly becoming the center of social activity for the whole campus as well as an enjoyable place to live for the women who stay there. Completed in December, 1951, the dormitory cost about \$350,000 to construct.

Freshmen women live in Hathorn Hall or Hathorn Cottage with one, two, or three of the species called roommates. A unique creature, the roommate is sometimes addicted to closing open windows, opening closed windows, polishing shoes with your towel, or cleaning her pen with your handkerchiefs. She also may have an alarm clock set to awaken the chickens and always be sufficiently fleet of foot to beat you to the telephone. However, living with her is an educational experience, most frequently a pleasure, but it may take an hour or two for everyone to accept everyone else's personal foibles.

Hathorn Hall is a center for many social activities. The entire ground floor is made up of a beautifully furnished lounge and recreation room where you can watch TV, play the piano, ping pong, the radio or phonograph, dance, talk, or just mope in pleasant surroundings.

There are two kitchen units handy for making popcorn or brewing coffee, and they're sometimes the scenery for a cake baking urge. The sewing machine is available to any woman who can tell a bobbin from a hem sticher and there are laundromats and clothes dryers provided.

Four Date Rooms

There are four date rooms, too. These allow more privacy for soul stirring conferences, but naturally the more affectionate visitors are always on Sunday-best behavior! There are two extra study rooms on this floor and a drying room.

Almost any day in the late afternoon, members of the Dance Theatre can be found slaving over a fiendish prouette. The dance group was organized at Hathorn Hall last fall.

The sound of a typewriter click-

ing madly away in the wee small hours may mean that the latest issue of "The Dorm Mat" is about to emerge from the mimeograph. During riot hour (between 10:00 and 11:00 p.m.) the dorm chorus frequently lifts its voice above the din of animated chatter.

Counselors Help Out

Residents of Hathorn Hall clean their own rooms, but a whisk with a damp cloth makes the metal furniture slick in a hurry. The Resident Counselor is also available to answer any questions and give a bit of help, whether it be a nickel for the Cake machine or an ear to your predictions of the end of the world.

River Falls State College has a reputation for friendliness. And Hathorn Hall is fast becoming known as one of the hubs of friendly activities and pleasant living at college.

DEBATERS' EXPERIENCES PROVE VALUABLE

Debate was considered by college students the most beneficial extra-curricular activity in later life in a poll of leading colleges and universities recently. Reasons for the choice of debate were: it teaches a student to think on his feet; it develops competitive spirit; it develops one's speaking ability; and it enables the debator to meet and make many friends from other colleges.

The first tournament the beginning debator at River Falls participates in is the River Falls Invitational "B" Tournament, at which debaters from ten or twelve colleges compete. Debaters then may go to any number of tournaments in various cities.

Other forensic activities offered at RFSC include after-dinner speaking, which emphasizes humor; folk-tale telling; oratory, impromptu speaking, and discussion.

The debator at River Falls may also become eligible to join Pi Kappa Delta, the national honorary forensic fraternity on campus.

Planning Commission Describes Long-Range Building Program

Winter Carnival Sparks Activities Of Second Term

River Falls' annual Winter Carnival celebration got underway Friday, January 30, with the dismissal of classes, and lasted through Sunday, February 1. Carnival activities began with the election of June Clark, Osceola senior, as chairman, and of Jim Belisle, Menomonie junior, and Margery Deans, Hammond junior, and King and Queen.

Special guest at the Winter Carnival this year was Miss Beverly Steffen of Appleton, who is Wisconsin's "Alice in Dairyland" for 1952-53. Friday's activities included card games, a bowling tournament, and the big carnival midway in South Hall gym. About fifteen organizations set up booths of various types in the midway.

The annual FFA Talent Show spotlighted Friday evening's festivities. Freshmen took top prizes in the show, with Jenny Sue Garnett, River Falls, winning first for her dance number, Dick Ellis of Maywood, Illinois, taking second for his piano solo, and Jeannine Davison, River Falls, winning third prize for her soprano solo. Entertainment prize went to the "Dixieland Band", a six-piece jazz group. A record dance in Hathorn Hall followed the Talent Show.

Saturday's Winter Carnival activities included snow sculpture, skiing, tobogganing, skating, and a warm-up at the dorm, at which Homecoming movies were shown.

Basketball highlighted Saturday evening's festivities when the Falcons met and defeated the Eau Claire Blugolds, 98-92.

The Winter Carnival dance followed the game, and chairman Clark crowned King Jim and Queen Margery rulers of a very successful 1953 Winter Carnival.

Fieldhouse, Union Included

When the children of present River Falls students come to their folks' alma mater for a college education in twenty or thirty years they aren't likely to find the place looking as it did when Mother and Dad went here. That is, not if plans and predictions released last fall by the State Planning Division are in effect.

According to the planning study published by the division in October, River Falls will probably have an enrollment of 1,000 in 1962; 1,200 in 1972; and 1,400 in 1982. These students may be studying in the new library, practice teaching in the new campus school, going to basketball games in the new fieldhouse, scheduling social activities in the new student union, and living in one of the several new dormitories on campus.

19,000 by 1982

An estimated total enrollment of perhaps 19,000 students in the nine state colleges in 1982 means that the building program must be accelerated before that date. The planning study released has outlined proposed building plans for each college. The program includes a land acquisition policy, in which real estate the division feels should be purchased for college use is described.

Buildings proposed in the program for River Falls, and their estimated costs are: (1) Library (under construction), \$750,000; (2) Campus School, \$850,000; (3) Health and Physical Education Building, \$750,000; (4) Men's Dormitory, \$400,000; and (5) Student Union, \$350,000.

More Farm Land

In discussing the land acquisition policy for RFSC, the division says, "Agriculture is a specialty at River Falls. There is great need for training more future farmers and agricultural teachers. The present farm facilities do not constitute an economic modern farm unit such as there should be at a college that purports to teach the practice of modern agriculture. The farm land deficiency at this college should be remedied. . . . The division concurs with the president's recommendation that at least 80 acres of additional farm land, adjoining the presently-owned lands on the south or east, should be

acquired without delay."

It is planned that the Health and Physical Education Building will be erected on East Cascade avenue, in the block west of South Hall. The Student Union is to be built next to it, beside the driveway from Cascade avenue to Hathorn Hall. The men's dormitory is planned for the far western corner of the campus, on Vine street.

Dormitories Stressed

The long-range map of the future River Falls campus as planned by the division also shows four additional dormitories which could eventually be built. Two of them are to be girls' dorms, one where Hathorn Cottage now stands, and the other two just north of this. Two men's dorms, to be built where the college farm now stands, would bring the total men's dorms to three.

A total of \$3,100,000 would be required to erect the five buildings suggested by the division for River Falls. This amount is the second highest figure recommended for a college, the most money is to go to Milwaukee, which will eventually be by far the largest state college.

Fulfillment of the present building programs at all the colleges will require \$22,500,000. The 1951 legislature appropriated \$4,800,000 of this, and as a result buildings are under construction at five schools, including River Falls.

Just when the rest of the building program will be completed depends on the legislature's appropriations and the growth of the colleges. The planning division emphasizes that its suggestions and recommendations for the nine state colleges of Wisconsin are apropos only in 1953, and that the outlook is subject to change at almost any time, depending on future events.



The college barns are located south of the industrial arts building on the RF campus.

One Fourth of RF Students Major in Agriculture

Agriculture graduates of River Falls State College are spread throughout the nation in many jobs, including teaching, county agents, soil conservation, veteran trainers, farm managers, and farming.

Twenty-five per cent of the students at River Falls are enrolled in the four year Agricultural Education program, which is in its twenty-fifth year. Besides the aforementioned positions ag men enter research and investigation jobs, industry, commerce, veterinary medicine, forestry, and marketing.

The graduates in agriculture have a tremendous influence upon their state. Almost 100% of the graduates have been places which

reflects upon the fine staff and facilities of the school.

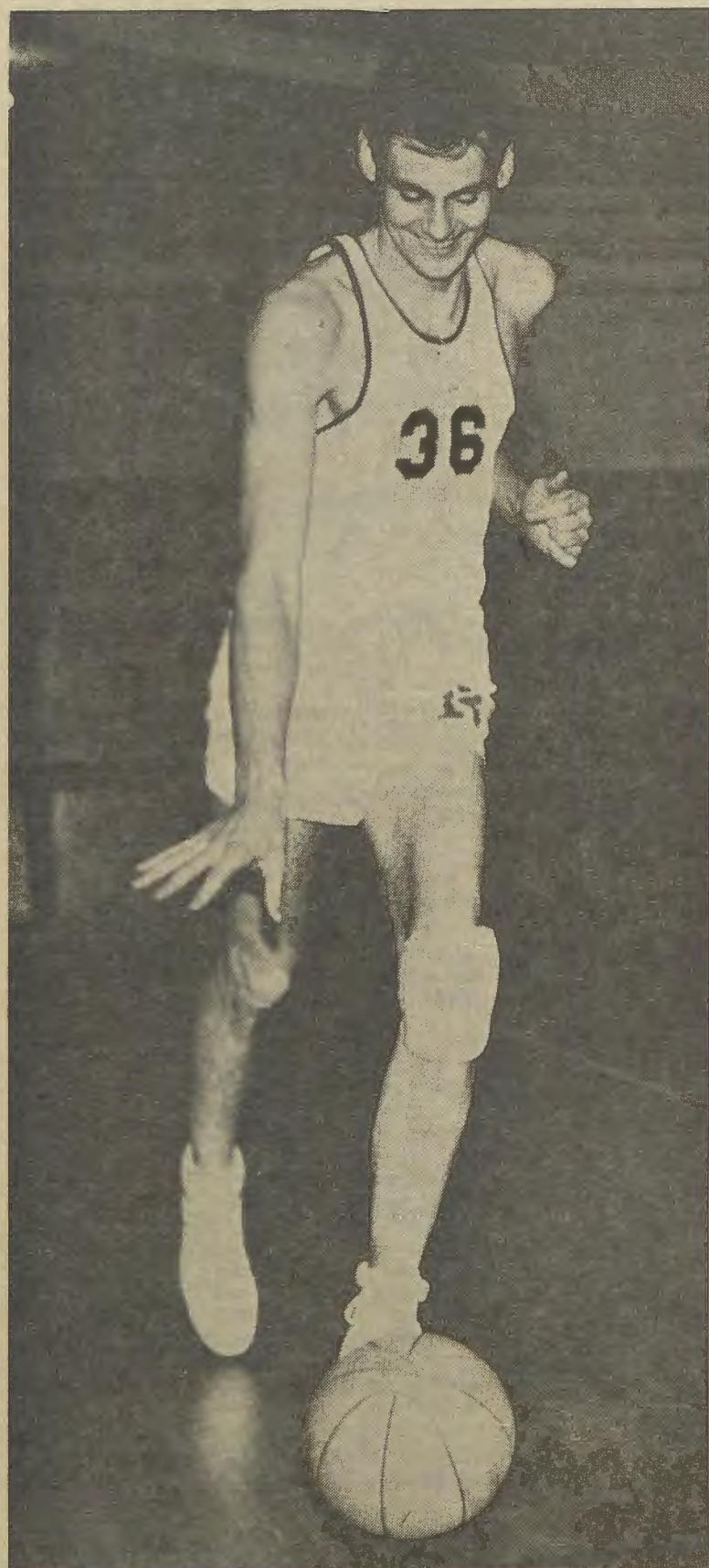
River Falls has special facilities to train ag specialists. One of the outstanding features is the college farm, which has been increased to 240 acres by recent land purchases. It is well stocked with chickens, hogs, and a fine herd of Holstein and Guernsey cattle which furnish the college and part of the city of River Falls with milk.

The industrial arts building has modern woodworking, metalworking, welding, machine, farm power, electricity, and printing shops. Last year \$15,000 worth of new equipment was added to the shops to make them an outstanding part of the agriculture course equipment.

Students in agriculture who plan to teach the subject in high schools join the Future Farmers of America. The largest organization on the campus, the FFA's primary purpose is to train students in leading and advising FFA groups in high schools.

Kuss, DeLong Break Conference Records

Rog Named Basketball Player of 1953



Rog Kuss, sensational Falcon basketball center, who graduates this year, has been named Player of the Year by the Helms Athletic Foundation.

Although a small school, Wisconsin State College at River Falls, has produced two nationally-known basketball players in the past three years. Graduating in 1950, Nate DeLong, Falcon center, set a new national individual scoring record of 2592 points during four years of play.

DeLong, who played in 102 games, had an average of 25.4 points per game.

Roger Kuss, River Falls high-scoring basketball center for the past three years, has been chosen N.A.I.A. College Basketball Player of the Year. Kuss, a six-foot five-inch 180 pounder who averaged 38.9 in 21 contests this year, chalking up a total of 817 points, was picked for the honor by the Helms athletic association.

During the past three basketball seasons, Kuss has registered a total of 1,843 points for his River Falls teams—817 in 1953, 524 in 1952, and 502 in 1951. Although River Falls was beaten in its initial encounter in the N.A.I.A. Championships at Kansas City in March, it wasn't Kuss' fault, for the big River Falls star collected a count of 38 points in the game against Mississippi Southern.

Rio Grande's Clarence "Bevo" Francis (Ohio) gave Kuss closest competition for N.A.I.A. Player of the Year laurels. Francis registered 1,954 points during the 1953 season for an average of 50.1

Kuss' hometown is River Falls, and he was a high school basketball star before entering RFSC in 1949. He understudied the famous Nate DeLong in his freshman year and set a scoring record of 52 points in a single game his sophomore year in a contest with Eau Claire. He broke this conference record in February when he hit 54 points against Stevens Point and he broke it again later that month when he bagged 57 points as the Falcons beat Stout 103-74.

Kuss led his teammates with 20 points when he played on the College All-Star team against the Minneapolis Lakers at St. Paul in March. But despite professional interest in his abilities on the cage court, Rog will not enter professional basketball. He has sugar diabetes, and too much basketball could be too hard on his stamina. So he will enter the coaching field and plans to coach at River Falls High School next year.



Nate DeLong, River Falls basketball center from 1946 to 1950, holds many of the scoring records in the Wisconsin State College basketball conference.

Pasteurized Milk and Cream
ICE CREAM COTTAGE CHEESE
FALLS SANITARY DAIRY

Take Mother out to Dinner May 10

O'BRIEN'S CAFE

Give You The Best In

FINE FOODS

Beautiful sterling summer jewelry, earrings, necklaces, bracelets, styled by LANG, priced at \$1.50 and up, including tax. Gift wrapping free of charge. We also wrap for mailing.

NEHER'S JEWELRY

Falcons Finish Excellent Seasons In Football and Basketball

Under the direction of coaches Phil Belfiori and Bill Solley, River Falls State College has an athletic department which includes football, basketball, baseball, track, and golf as intercollegiate sports, and a host of activities played on the intramural level of competition.

The "Falcons", as the RFSC football squad is known, had one of its most successful seasons last fall, finishing its schedule with five victories, over Augsburg, Stout, Superior, Winona, and Mankato; two losses, to St. Cloud and La Crosse; and a tie with Eau Claire.

Scoreboard Sought

Falcon football games are played at Ramer Field, two blocks east of the main campus. Present goal of the Student Foundation is an electric scoreboard for Ramer Field, which will probably be installed by next fall.

In basketball at RFSC this year the Falcon quintet wound up in second place in the Wisconsin State College conference—and they beat the first place team by 19 points! River Falls won

eight and lost four conference games, and won five and lost four non-conference games in 1952-53.

Highlight of the basketball season was the Falcons' trip to Kansas City to represent Wisconsin in the N.A.I.A. Tournament, at which 32 of the best small college teams in the country participate. River Falls won the right to enter the tournament by defeating Carroll College 88-87. The Falcons lost their opening game at Kansas City to Mississippi Southern, 106-72.

Home games for the Falcons are played in the North Hall gymnasium. A new record for the gym was set this year when the Falcons beat Stevens Point 110-115, making 215 points scored in the gym in one basketball game.

Intramurals Popular

Baseball, track, and golf dominate the spring sports scene at River Falls, continuing the varsity program right to the end of the year. Intramurals are popular at River Falls for students not participating in the intercollegiate program. Intramural sports include football, basketball, soccer, volleyball, softball, baseball, swimming, table tennis, tennis, and golf.

The "R" Club is the organization for River Falls men who have earned letters in varsity sports at RFSC. Among the "R" Club's activities is the operation of the concessions at football and basketball games.

Sports aren't forgotten for women at River Falls either. Under the direction of Mrs. Helen McBride intramural sports for women are carried out all year. The girls have their own gymnasium, in South Hall. The W.A.A. is the athletic organization on the campus for women students.

Campus Organizations Contain Variety, Achievement, Enthusiasm

Variety's the key word when speaking of the student organizations at R.F.S.C. There are over two dozen clubs on campus, each with a defined purpose, and each composed of enthusiastic members who do their best for their organization and their college.

One of the self-governing groups on campus is the **College Women's Association**, composed of all River Falls women. An executive board of eleven members, chosen by the women is responsible for making and enforcing the policies and regulations for women students as well as promoting social and cultural growth among women students.

Interested in elementary education? Well, if you're still interested after your first glimpse of the "Training School Terrors," the **Association for Childhood Education International** is your organization. Membership is open to elementary majors and offers a helpful program for the students interested in this field.

Your chance to strike back at all the boring after dinner speakers you've encountered will come if you join the **Toastmasters at RFSC**. Qualifications for membership are a good set of lungs and leather ears.

Every student automatically belongs to the **Student Foundation**, which has as its purpose the betterment of Wisconsin State College at River Falls.

Going to take a foreign language at college? If its German, then you'll want to join the **German Club** and learn about the language, customs and recreation of the Deutsch. Or if its French you prefer, **Le Cercle Francais** would be for you.

Hitting a happy medium, the non-denominational **YWCA** and **YMCA** provide a program of religious, social and service activities to enrich your college experience. The **Newman Club** is the religious organization on campus

for Catholic students.

If you can count to ten without hesitation, the **Math Club** will greet you with open arms. The membership delves into the histories and mysteries of Math, proving that even arithmetic can be fun.

Students majoring in rural education at RFSC become members of the **Rural Life Club** which provides interesting speakers and discussions as well as parties. If it's chemistry you like, join the **Chemistry Club**, which is an affiliate of the national American Chemistry Society.

The River Falls political pot boils over quite frequently when the **Young Democrats** and **Young Republicans** get into an argument. Each welcomes students with an interest in politics and good government.

Sigma Chi Sigma is an honorary sorority at RF for four-year women students promoting service, culture, and sociability among its members. **Kappa Delta Pi** is the national honorary scholastic fraternity for upperclassmen who are preparing for teaching.

Skiing is a favorite winter sport with you? The **Sitzmarker Ski Club** on campus has a large membership takes trips to Wisconsin ski resorts each winter.

If teaching's your planned vocation, you'll be interested in the **FTA at River Falls**. FTA means **Future Teachers of America**, and the group includes among its projects organization of FTA chapters in high schools.

The **Vets Club** on campus is open to all fellows who served in World War II or the Korean War.

Student Senate Guides Activities

Eleven River Falls students are the kingpins when it comes to student government on the campus. The eleven are the members of the **Student Senate, RFSC's** unique governing body. The Senate has no faculty advisor, but has the privilege of calling in many faculty members for advice and help.

Seven of the Senate members are elected by the student body each spring and the other four are the class presidents. The Senate meets every two weeks, at a convenient time for the students to drop around to "air their gripes" and "give helpful suggestions".

Probably about the busiest eleven kids at school, the Senators are in charge of supervising most of the activities on campus. They make general plans for Homecoming, Winter Carnival, and Rec Day. They select candidates for chairman and help with plans for these activities.

The Senate chooses the editors for the **Student Voice** and the **Meletean** and also helps allocate the activity fund. School elections for queens, chairmen and Senate members are arranged by the Senators.

The **Social Committee** is a subsidiary group of the Student Senate, and its members are appointed by the Senators. The Social Committee carefully plans and budgets the funds for most of the RFSC social functions throughout the school year.

RFSC MUSIC FEATURES BAND AND CHOIR

River Falls State College is proud of its music department. Early each fall college freshmen are recruited to join one of the many campus music organizations such as the band, choir, orchestra, pep band and folk singers.

In March more than fifty members of the a capella choir, directed by Mr. Chauncey King, left by chartered Greyhound buses on their annual three day tour of Wisconsin.

Hundreds of dollars of musical instruments are ready for the personal use of students who play in the college band and orchestra, which is directed by Mr. B. J. Rozehnal, chairman of the Music Department.

Most appealing to vocalists is the folk singers group which sings at many functions during the school year. This group is extremely popular among the students and faculty at the college and has earned praise from the townspeople as well.



HENRY IBA



LOWELL DAWSON

DAWSON, IBA WILL HEADLINE COACHING CLINIC AT RIVER FALLS THIS SUMMER

Headlining the Annual Coaching Clinic at Wisconsin State College this summer will be Lowell "Red" Dawson, football coach for the famed Pittsburgh Panthers, and Henry Iba, basketball coach at Oklahoma A & M.

The Fourth Annual Clinic will be held here June 18, 19 and 20. It is expected to draw coaches from Wisconsin, Minnesota, Iowa, Illinois, Michigan and the Dakotas.

Arranged by Phil Belfiori, Athletic Director, the clinic also will include outstanding high school basketball and football coaches. Roger Kuss, this year's N.A.I.A. College Basketball Player of the Year, will be on hand.

Coach Dawson is a graduate of River Falls State College where he played quarterback. Graduated from here in 1927 he played in the Rose Bowl game of 1931 for Tulane University. That year he went to the University of Minnesota as backfield coach for Bernie Bierman. He coached at Tulane from 1937-41 and returned to Minnesota from 1941-46. Turning to the pro leagues he coached the Buffalo Bills for three years but returned to college football and coached backfield at Michigan State from 1949-52. This was his first season with the Panthers of the University of Pittsburgh.

During Coach Henry Iba's tenure, Oklahoma A. & M. has won or shared the Missouri Valley Conference championship 13 times in 19 years. Two national titles and one national runner-up highlight the unusual career. The peak year was 1946 when A. & M. won 31, lost 2, and repeated the NCAA sweep of the previous season.

Iba's Cowpokes have taken other honors, the major record being in the All-College tournament, Oklahoma City, pioneer of Christmas week tournaments. In the 17 years the All-College has been held, A. & M. has taken the championship 10 times, including this season.

This season's record at Oklahoma was 22 wins and 6 losses, plus one win and one loss in the NCAA playoffs.

Drama Offers Opportunities In Many Fields

Those interested in any phase of dramatics will find many opportunities to participate in acting and directing, oral interpretation, radio productions and other dramatic skills at River Falls. The dramatics department is headed by Dr. Blanche Davis who is constantly seeking new talent for this interesting phase of college training.

The main theatre of the college is located in North Hall auditorium. The stage is big and is equipped with a versatile lighting system, including an intricate dimmer control. A Baldwin electric organ is connected to the stage to provide music for recitals and musical effects during plays.

Advanced oral interpretation is one of the courses drama students seem to enjoy especially. Opportunities are provided for public recitals in drama quartets, solo readings and advanced oral interpretation of literature. During the year drama students take part in tape recorded radio programs which are broadcast over area and state radio stations.

"Masquers" is the college organization of drama students which presents stage plays during the school year. All interested drama students are encouraged to belong to the "Masquers". Alpha Psi Omega is the honorary dramatics fraternity chapter which is located at River Falls. This honorary fraternity accepts qualified members who have done the required work in stagecraft, acting, directing, and other things in drama work.

Have Your Clothes Cleaned For Mother's Day
FREE Pickup and Delivery Service
Ideal Cleaners
 Phone 2930 River Falls, Wis.

EXCELLENT SHOE REPAIRING
 ONE-HALF BLOCK NORTH OF MOODY'S GARAGE
MOAN SURPLUS STORE
 215 NORTH MAIN STREET

Campus capers call for Coke

Everything's in high gear at May Fete time ... keeps you on the go.
 Good idea is to pause now and then for a Coke.

DRINK Coca-Cola

BOTTLED UNDER AUTHORITY OF THE COCA-COLA COMPANY BY
 Coca-Cola Bottling Company of Red Wing, Inc.

"Coke" is a registered trade-mark. © 1953, THE COCA-COLA COMPANY

Hallmark Greeting Cards for Mother's Day
 Visit Our Gift Department
Kulstad's Shoe Store

Let a Picture Record the Prom For You and Yours

As in previous years the price of two 5 by 7 double weight matte pictures of portrait quality is only \$1.50. The increasing demand for these pictures had enabled us to continue at the same price and quality for the past seven years. Studio props and equipment with the popular strobolites will be set up to make this memorable night last forever.

P. S. The Student Voice and the River Falls Journal will have some of these pictures in the next issues.

GENE'S Candid Studio
 River Falls, Wis.
 Dial 2384

Homecoming Dominates RF Fall Term Festivities

Homecoming, River Falls' biggest social week-end of the year, opened with a snake dance thru the campus and downtown River Falls on October 24 and closed with the big dance in the North Hall gym the following evening.

Margaret Remund, a senior from Amery, reigned as queen over the 1952 Homecoming and John Mills, senior from Providence, R. I., acted as chairman. Other traditional Homecoming events were a pepfest, at which several classes and organizations presented skits, a beard-judging contest; and a torchlight parade and bon fire at Ramer Field.

The big Homecoming parade was the main feature of Saturday morning's activities. Led by the River Falls High School band, some twenty floats wound through the business district in River Falls.

"Swamp'um Injuns", the Homecoming slogan, began in earnest

Saturday afternoon when the River Falls Falcons faced the La Crosse Indians on the Falls football field in the championship game of the Northern Wisconsin State College conference. La Crosse won the game, 20-7.

Coffee hours for the alumni and former students and for the undergraduates took place after the Homecoming game, and Homecoming festivities ended with the big dance Saturday night.

Attendants of Queen Margaret were: Elayne Meyer, River Falls; Jean Herald, Baldwin; Marilyn Haglund, Plum City; and Isabelle Hanson, Deer Park.



Homecoming Queen and her Court

ART OFFERS VARIETY OF COURSES

Picasso may not owe his success to the River Falls State College Art Dep't. but many of the recent graduates claim they do. Newly added emphasis has been placed on art, both appreciation and application, in the educational program here. Courses in are appreciation, sculpture, graphic art, painting, lettering, ceramics, and drawing and design are offered for a minor in art.

With increased demand for art teachers, the college has also emphasized practical instruction in arts and crafts is given.

Art students at the college have available a ceramics room complete with potter's wheel and an electric kiln in addition to the laboratory and classroom for other art work on the first floor of South Hall. A number of exhibits of student art are shown each year.

Chesterfield Quiz

One carton of CHESTERFIELD cigarettes will be given to the person who submits the nearest correct answers to the CHESTERFIELD Sports Quiz. As many entries as desired may be submitted in the contest but each must be written on the back of an empty package of CHESTERFIELD cigarettes, placed in the answer box in the Student Voice room.

1. What is the distance of the longest home run ever hit?
2. Greco-Roman wrestling rules forbid the use of what for what?
3. What is the present record for the Masters Golf tournament and who set it?
4. What important sports event was recently won by Jim Kimberly?
5. Who won the NCAA boxing title from whom?
6. What is the present NCAA discus mark and who set it?
7. A pitcher nicknamed "The Big Train" set a modern major league record for successfully completed shutouts. What was his name and when did this occur?
8. Who is the number one U. S. swimming distance man?
9. A young man once stepped up to receive his trophies from Sweden's King Gustaf V. The King said: "You, sir, are the greatest athlete in the world." The man said: "Thanks, King." That man was _____?

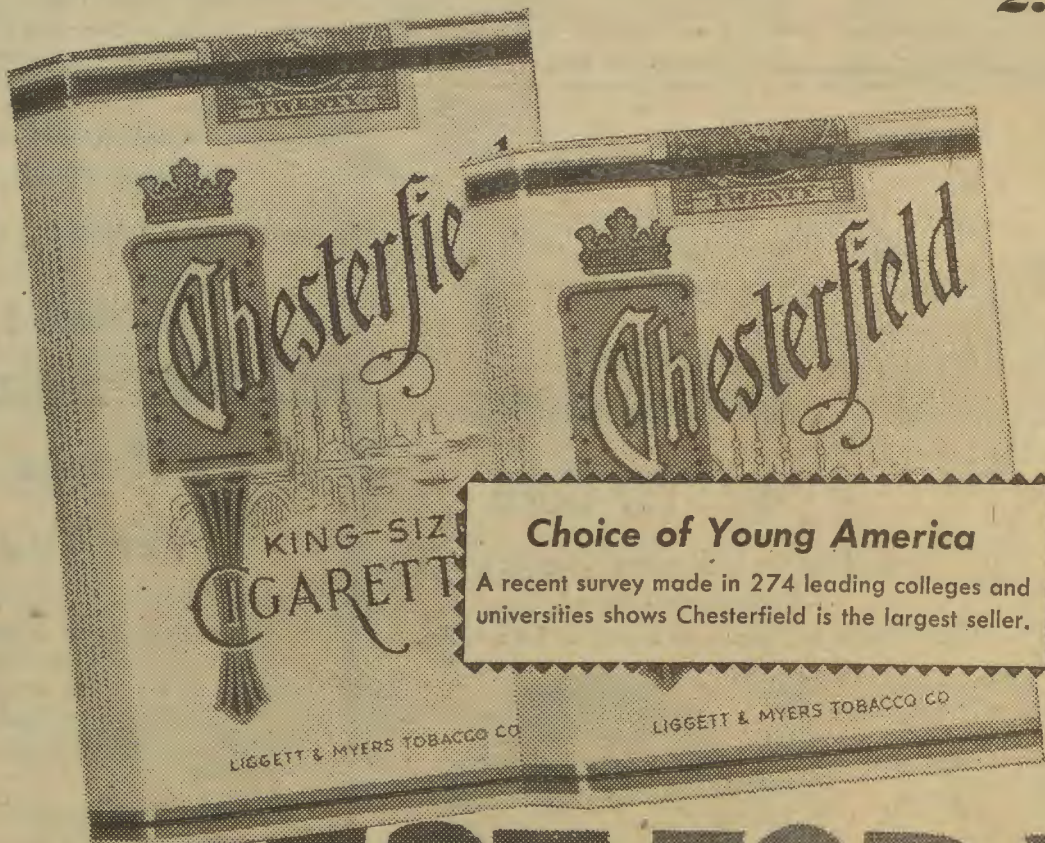
Don't you want to try a cigarette with a record like this?

1. THE QUALITY CONTRAST between Chesterfield and other leading cigarettes is a revealing story. Recent chemical analyses give an index of good quality for the country's six leading cigarette brands.

The index of good quality table—a ratio of high sugar to low nicotine—shows Chesterfield quality highest

... 15% higher than its nearest competitor and Chesterfield quality 31% higher than the average of the five other leading brands.

YEARS AHEAD OF THEM ALL!



2. First to Give You Premium Quality in Regular and King-size . . . much milder with an extraordinarily good taste—and for your pocketbook, Chesterfield is today's best cigarette buy.

3. A Report Never Before Made About a Cigarette. For well over a year a medical specialist has been giving a group of Chesterfield smokers regular examinations every two months. He reports . . . *no adverse effects to nose, throat and sinuses from smoking Chesterfield.*

BEST FOR YOU

For the BEST in
PRINTING
Dial 2265
Werth Print Shop
For "Werth-while" Printing
One door E. of Post Office