

# STUDENT VOICE

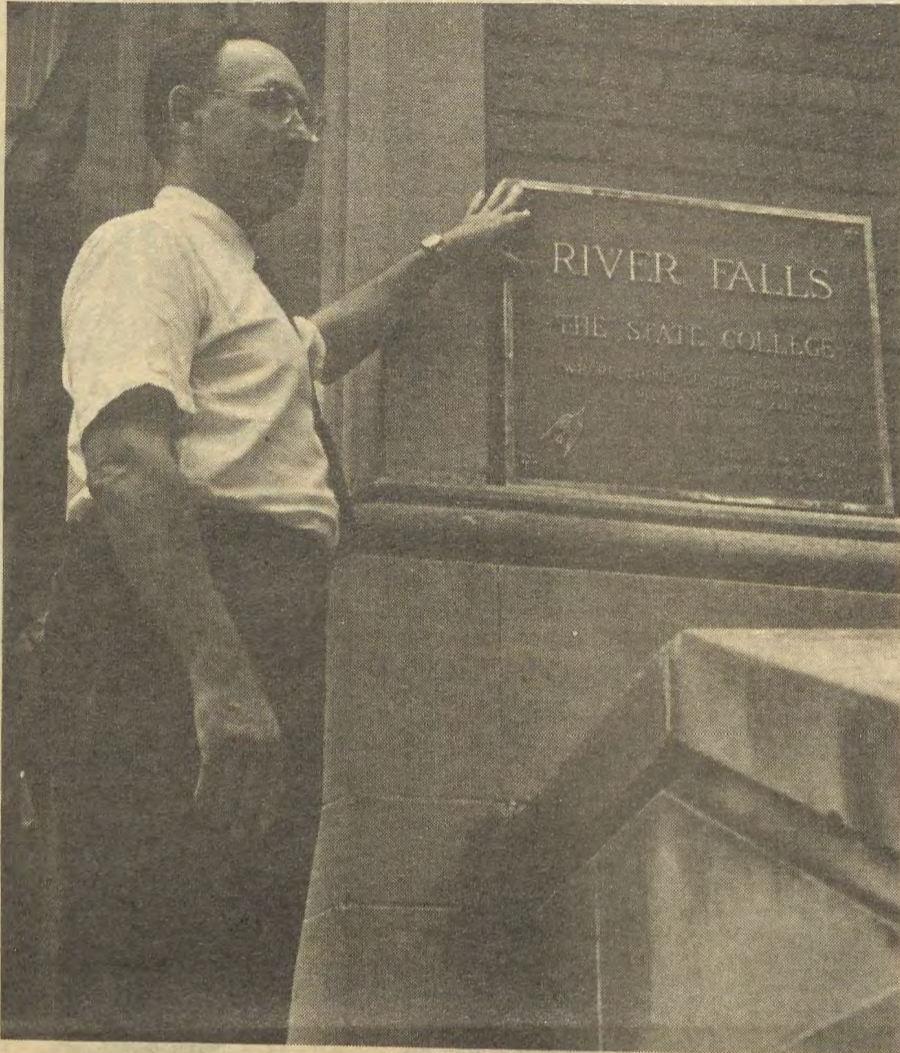
"WHERE THE FREE SPIRIT PREVAILS"

WISCONSIN STATE UNIVERSITY-RIVER FALLS

VOLUME 52 NUMBER 3

MONDAY, SEPTEMBER 18, 1967

## 'Free Spirit Plaque' to be Dedicated



Dr. Wyman posed with a "Free Spirit" plaque in 1961 after writing a pamphlet suggesting that the phrase be cast in bronze and nailed to the door of North Hall. An alumnus took the suggestion and donated the plaque. Now after several years the plaque is going to be dedicated at a formal ceremony during Homecoming Activities, Oct. 7.

The bronze plaque naming River Falls as the college "Where the Free Spirit Prevails", which has long awaited a dedication, will officially become part of our university during Homecoming, 1967.

On Oct. 7, after six years in some remote corner of the River Falls campus the plaque, which was donated in 1961 by Clyde W. Zamjohn, a 1926 graduate of River Falls from Waukesha, will be dedicated by Dr. Walker D. Wyman, distinguished professor of history.

The plaque will be mounted in the hallway between Karges Center and the Student Center Ballroom by the time of the homecoming festivities. The actual dedication will be made at the alumni reception after the homecoming football game on the Saturday of Oct. 7.

Wyman, president of Whitewater from 1962 to 1967 and head of the Social Science department here from 1932 to 1962 initiated the idea for the plaque in a speech to the alumni chapter in Eau Claire in the spring of 1960.

The seed for the idea began to develop back in April of 1957 when William T. Evjue editor and publisher of the Madison Capital Times spoke at our first Grass Roots political conference. Wyman initiated this "Conference on Conformity in American Life" with the controversial Evjue. The Conference was eventually to lead to the donation and, finally, the dedication of the plaque which reads, "River Falls--A College Where the Free Spirit Prevails."

After his visit here, Evjue was so impressed with the students and faculty members of River Falls that in addition to setting up two scholarships for deserving students each year, he wrote several columns on the College headed, "River Falls--A State College Where

the Free Spirit Prevails."

In his speech to the Eau Claire alumni chapter, Wyman put forth the suggestion that the phrase he cast in bronze and bolted to the door of North Hall. His purpose was to give us a "symbol of purpose", something to strive for to make River Falls "great". Zamjohn followed up the suggestion by donating the plaque the next year.

Immediately plans for a dedication ceremony were made. The College attempted to get television commentator and head of the United States Information Agency (USIA), the late, Edward R. Murrow of the famous Person to Person show to do the honors. But because of unavoidable circumstances Murrow was not available for the ceremonies, and the dedication was postponed.

In a second attempt the College later tried to get Carl Rowan, Murrow's successor to the USIA. But again the plans fell through. Rowan did, however, come for the commencement speech in 1966.

Now that Wyman is back at our university, plans are again being made for the proper, if not belated, ceremony for the dedication of the bronze plaque.

In his speech seven years ago Wyman asked "What does River Falls mean to you?" Let it be "Where the free spirit prevails."

VOICE DIRECTORY

Page 3 New Calendar

## Residence Regulations, State Code of Conduct, Student Senate Topics

Residence hall regulations, the 1967-68 activities budget, and the Board of Regents' proposed "Code of Conduct" for Wisconsin State Universities were the central topics of discussion at the Student Senate meeting held Wednesday, Sept. 13. Several reports from various sub-committees and organizations were also heard.

The three main points discussed concerning dormitory regulations were:

1. Search and seizure, and the paper students were to sign releasing their luggage for inspection.
2. Weekly room checks.
3. Visitor's hours.

According to Senate President Bob Rasmussen these issues have been discussed with Daniel Parker, housing director, but as of yet Parker hasn't answered all of the questions asked him. Rasmussen also said that, "The students have a right to a statement," if these regulations are going to all be strictly enforced.

Most of the senators agreed that with freedom comes responsibility and that many students living in the residence halls have not been responsible in their actions. A motion was passed to ask the Legislative Action Committee (LAC) to plan a free spirit forum for students and administration to discuss dormitory regulations.

The 1967-68 budget is not yet completed but the base figure for this year will be \$ 100,000, \$5,000 less than last year.

This will mean cut-backs in most senate allocations when the budget is completed and approved.

The budget committee also reported that the men's intramural program will be granted a separate allotment this year instead of giving money through the athletic department.

The senate decided to cooperate with the Board of Regents in planning a uniform "Code of Conduct" which would apply to all nine Wisconsin State Universities. Michael Brecke and Bob Rasmussen were elected to fill the two student seats on the six member committee appointed to begin setting up a preliminary code.

A general distaste for the idea was expressed by most of the senators. "Personally, I don't like the idea of setting up two golden slabs of rules for all students to follow," Chuck Feltes said. After some discussion it was decided to "play the ball game" but that this University's contributions to the code would be toned a little to the left and give the Board of Regents a taste of the liberal attitudes River Falls students are used to.

Gordon Fleury reported that LAC is making some plans for future free spirit forums and is discussing the possibility of a student government library run jointly by LAC and the Student Senate. LAC will be holding interviews Monday, Sept. 18, to elect new members for vacant seats.

Continued on page 12



Art Professor John Lorence is seen here on the opening night of the Coffee House in discussion with students. The Coffee House will be open every night during the week from 7:30 to 11 and on weekends from 7:30 to 12.

# What's Doing

Students who have not yet picked up their 1966 Meleteans are asked to do so as soon as possible.

Meleteans will be distributed in the Student Publications room in the Student Center, Room 209. Yearbooks may be picked up during the hours of 9 a.m. to noon on Tuesdays and Thursdays and 4 to 7 p.m. on Wednesday and Friday.

Two Student Senate positions are vacant following the resignations of Senators Linda Graves and George Wilbur, and two new senators will be elected at an all school election scheduled for Wednesday, Sept. 27.

Candidates may pick up petitions Rules to Govern Elections and Sign Regulations in the Personnel Office at 117 North Hall. Petitions must have signatures of 50 students and must be turned into the Dean's office by 5 p.m. Sept. 19.

Campaigning will begin at 12:01 a.m. Sept. 21.

An orientation meeting - coffee hour for graduate students will be held Tuesday, Sept. 19 at 8:00 p.m. in Rooms 101-102 of the Student Center. Dr. Phillip Anderson, Dean of the Graduate School, will explain many of the common problems of the graduate students. Faculty representatives of the various departments will be on hand to meet the students and discuss their problems. It is an excellent opportunity to solve the red tape and meet faculty members and other graduate students.

Students from every country are visiting Europe in constantly growing numbers. This summer, students from dozens of countries converged on London, Rome, Paris, Munich, Vienna, and other major cities of Europe to enjoy the scenery, sample the cooking, sip the wines, visit the museums, and talk with the people.

Many people do this on \$2,000, \$1600, \$1200, or \$900 tours, but it isn't necessary. If you want to enjoy Europe, meet students and travel the way they do, you can easily spend a two month vacation in Europe next summer. All of your expenses, including a round-trip jet flight need not cost any more than \$550.

If you are interested in learning exactly how it can be done, in obtaining the addresses and names of the proper sources, and perhaps enjoying a few slides of what Europe looked like this past summer, come to Room 223 in South Hall at 4:00 on Wednesday, Sept. 20.

Kappa Delta Pi will meet Tuesday, Sept. 19 at 7:00 p.m. in Rooms 201-202 of the Student Center. Refreshments will be served.

The Institute of International Education announces that competition for Fulbright Grants for foreign study in 1968-69 is now open. The Fulbright grants are for students who will have a Bachelor's degree by September 1968 and wish to study for a year in a foreign country.

Grants pay all traveling, educational, and living expenses and are available for most countries in Europe, Latin America, Africa and Asia.

If you are a senior or will graduate by the end of summer, 1968, and are interested in such grants, please see the Campus Fulbright Advisor, Dr. Buschen, in South Hall 321 as soon as possible.

University Activities Board will present Charles Heston in Diamond Head. The first Falcon flick will be Sept. 24 in the Student Center dining room. A special student rate of 35 cents is offered.

William E. McEwen, Pierce County Veterans Service Officer, River Falls, Wisconsin, announced last week that the Veteran Service Office in River Falls will remain open Monday evenings until 8:30 p.m. Evening hours will commence at 4:30 p.m. and run continuously. This schedule will remain in effect through Monday, Dec. 18, 1967.

The Student Foundation Committee will be holding interviews on Sept. 21 at 6:00 p.m. in Room 201 for the following class vacancies: one junior, one sophomore, and four freshmen.

An informal reception will be held in the Student Center ballroom on Tuesday, Sept. 19, from 7:00 to 9:30 p.m. This reception will provide an opportunity for students new and old, to meet and visit with the staff of the College of Agriculture. A special invitation is extended to the class of 1971.

All students majoring in the Agricultural and Earth Sciences are encouraged to attend. Coffee, punch and cookies will be served.

The U.S. Army and WAC Recruiting Team will visit the River Falls campus on Sept. 20 and 21 in the Student Center. All sophomores, juniors, and seniors, are encouraged to explore the possibilities with summer training in their Officer Candidate Program.

Sigma Alpha Eta will hold a meeting Thursday, Sept. 21, at 7:00 p.m. in Room 201 and 202 of the Student Center.

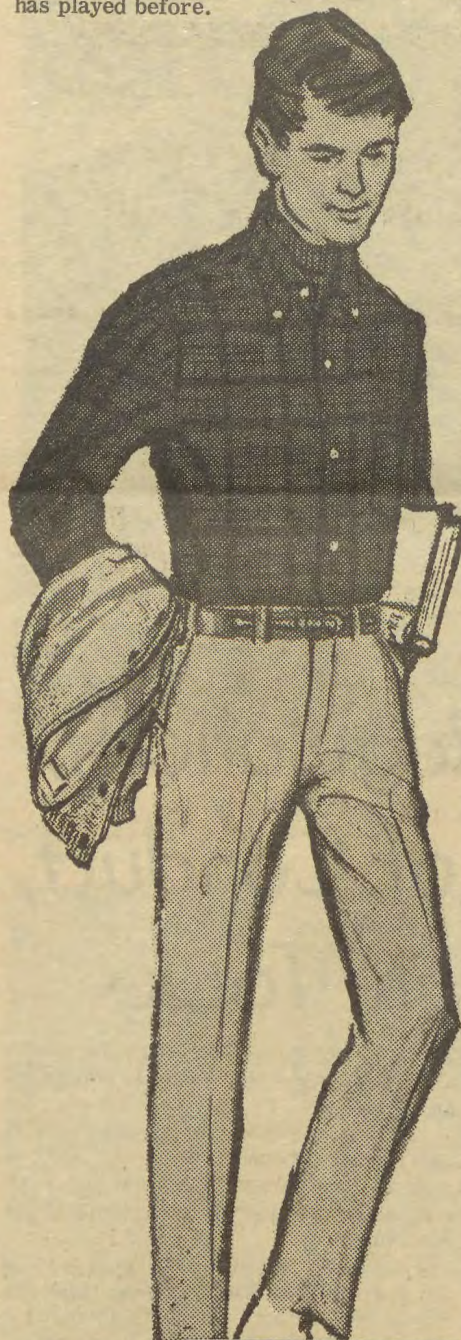
Any persons interested in working on the literary staff of the Prologue meet Tuesday at 3:30 at Goble House.

The newly elected officers for 1967-1968 of the Women's Recreation Association are: President- Dana Dufenhorst, Vice-President- Lynn Keller, Secretary- delores Jilek, Treasurer- Doris Hop, and Publicity Chairman- Gleness Oehlke.

The field hockey team meets every Tuesday and Thursday from 4:00 to 5:00 p.m. All girls, especially freshmen are encouraged to join whether or not one has played before.

A meeting will be held for all girls on Wednesday, Sept. 20 at 5:30 p.m. in the student center ballroom. The meeting is sponsored by the Women's Recreation Association. Clinics will be held for major sports and a free swim will be offered from 6:00 to 7:00 pm, refreshments will be included.

The gym will be open on Wednesday from 6:00 to 9:00 p.m. all year for girls intramurals.



**KORATRON**  
**FARAH**  
with  
**FaraPress**

**PERMANENTLY PRESSED  
SCHOOL SLACKS**

Smartest slacks to wear and our BEST BUY! Slim, trim fit! New Hopsacks, Diagonal Twills! Plains, plaids! Coordinated color tones!

**\$6, \$7, \$8**

**BENSON'S**

## Swingline Ratty Rorschachs

Test yourself...  
What do you see in the ink blots?



[1] A sizzling steak?  
Ten dancers?  
A rabbit?



[2] A lantern?  
A moth?  
TOT Staplers?  
(TOT Staplers!? What in...)

This is a  
**Swingline Tot Stapler**



**98¢**

(including 1000 staples)  
Larger size CUB Desk  
Stapler only \$1.69

Unconditionally guaranteed.  
At any stationery, variety, or book store.

**Swingline INC.**  
LONG ISLAND CITY, N.Y. 11101

ANSWERS: 1. If you see the steak: 80 on a diet. Ten dancers: No wonder you flunked the New Math in high school! A rabbit: Grow up; you should have given up Mother Goose long ago. 2. A lantern: We heard already, Paul. The British are coming! A moth: You're right. TOT Staplers: you need one to stay organized.



**Pizza**



- Fresh Made -

**All 12 Kinds of Pizza**

Call In  
For Carry-Outs or  
Delivery

Open 4:30 p.m. to 1 a.m.  
Daily  
Fri. - Sat. Till 2 a.m.  
Sun. Till Midnight

DIAL  
**425-6358**

**Alex's Pizza**

124 North Main St., River Falls

# Religious Groups May Lose Privileges

Student Senate President Bob Rasmussen announced that alleged discriminatory clauses in the Newman Club and Gamma Delta constitutions must be justified by the religious groups or the clubs will be threatened with disbarment as an official university group.

According to Rasmussen, "Our position at this time is one of inquiry. We are basically concerned with finding out why this discriminatory clause exists and determining whether there is just cause for such a clause."

Both Newman and Gamma Delta (Lutheran) contain clauses in their constitutions which state that only members of their particular faiths can hold positions on their internal governing board. Both clubs allow

any person of another faith to join their club. They cannot hold an office, however.

Rasmussen is presently in the process of setting up meetings with Newman Club, Gamma Delta and Ralph Senn, a public attorney representing the Newman Club in this action. Dates for the public meeting will be announced later, Rasmussen stated. He is also considering holding a Free Spirit Forum on the subject.

Last week the Senate received a letter from Senn stating the Newman Club's position. He stated in the letter that while "we know of no action of the Student Senate against other church affiliated student groups, we are certain that they all implement the rule that their internal government shall be in the hands of mem-

bers of the particular faith involved." However, Rasmussen stated that the Lutheran group Gamma Delta had such a clause along with the Newman Club but that these were the only two religious groups, he knew of, that contained such a discriminatory clause.

Senn pointed to both the First Amendment of the U.S. Constitution and Section 187.12 of the Wisconsin statutes in his letter. The letter stated in part, "Section 187.12 of the Wisconsin Statutes sets the laws relating to the internal government of corporations of the Roman Catholic Church. This statute provides that the trustees of each congregation shall be the Bishop of the Diocese, the Vicar-General of the Diocese, the Pastor of the

Congregation, and "...two laymen, practical communicants of such congregation (the latter to be chosen from and by the congregation). The Senate is acting contrary to these statutes in forcing the Newman to allow non-Catholics on its governing board." Senn also pointed to the First Amendment which guarantees the freedom of religion to all Americans and stated the "this provision has been repeatedly construed by the Courts to prevent any agency of the Federal or State governments from interfering with the freedom of people to worship as they desire, to choose their own ministers, and to provide for the internal government of their religious organizations." Senn refused to comment on any possible legal action pending action from the Senate.

## STUDENT VOICE

"WHERE THE FREE SPIRIT PREVAILS"

WISCONSIN STATE UNIVERSITY-RIVER FALLS

VOLUME 52 NUMBER 3

MONDAY, SEPTEMBER 18, 1967

# President Delorit Approves Calendar

The new 1967-68 school year calendar as proposed by the Faculty Council and Faculty Senate approved by Richard Delorit, acting president, is:

### FALL QUARTER

Orientation and Registration	Tuesday, September 5
	Wednesday, September 6
Classes begin at 8:00 a.m.	Thursday, September 7
Exam period	November 16, 17, 20, 21 22 (to 2:00 p.m.)

### WINTER QUARTER

Classes begin at 8:00 a.m.	Tuesday, November 28
Christmas recess begins at 5:00 p.m.	Thursday, December 21
Classes resume at 8:00 a.m.	Monday, January 8
Exam period	February 26, 27, 28, 29, March 1
Winter Quarter ends	Friday, March 1

### SPRING QUARTER

Classes begin at 8:00 a.m.	Tuesday, March 5
Spring recess begins at 5:00 p.m.	Friday, April 5
Classes resume at 8:00 a.m.	Tuesday, April 16
Commencement	Sunday, May 26
Exam period	May 25, 27, 28, 29, 31
Memorial Day	Thursday, May 30
Spring quarter ends	Friday, May 1

Rescheduling gives a total of six extra days of vacation. This means there will be a free day between quarters.

The rescheduling gives six extra days of vacation. There will be at least one free day between quarters, an extra day at Christmas and three extra days for Easter vacation.

Another advantage of the new calendar is that fall quarter testing will be finished before classes are dismissed for Thanksgiving vacation and will not run through the holidays.

## Lists Must be on File

Dr. William L. Munns, Vice President for Student Affairs, has announced that all fraternities, sororities, clubs and organizations must have a list of its current officers and members on file in his office at 117 North and with the Student Senate office. Forms may be picked up in Room 117 North Hall and must be returned by September 28.

# Final Figures Show Increase of 76 Students

The final official enrollment figure at Wisconsin State University-River Falls showed an increase of only 76 students.

Last year at this time, the enrollment figure stood at 3,545. This year it struggled only as far as 3,621. According to officials in North Hall, this year's projection was to range from 3,900 to 4,000 students. About 300 freshmen whose applications had been accepted did not show.

The class breakdown shows 1,184 freshmen, 877 sophomores, 766 juniors, 629 seniors and 163 graduate students.

When asked if he could pin the bad turn out on any particular reason, Dr. B.J. Rozehnal, the new Registrar, said that a number of things could have contributed to it. He said the Board of Regents ruling allowing only 25 percent of the University's student body to come from out of state definitely hurt enrollment. River Falls attracts many students from the Twin City area.

Dr. William L. Munns, Vice President of Student Affairs, was asked a similar question and he responded that the "adverse publicity" about River Falls in some areas of the state was "unbelievable."

Dr. Munns admitted that in recent years the University has encountered some problems in the residence hall system, most

notably the damage done to Prucha Hall two years ago, but he said that these problems had been played up way out of proportion. Dr. Rozehnal also mentioned bad publicity.

Dr. Munns was then asked how he intended to meet the problems that the University does have and if an intensified program would mean more stringent rules. Munns answered the first question by saying that Wisconsin State University was "not a rehabilitation center for juvenile delinquents." He hinted that the University would not put up with people that chronically caused trouble.

In answer to the second question, Dr. Munns said that as soon as the residence hall governments can be formed and begin action, there would be a cooperative review and reform of the resident hall rules and regulations. He said that he hoped to abbreviate the number of rules into a workable outline that would be acceptable to all. "We don't want rules for the sake of having rules."

Dr. Munns said that university students are not children and that he felt they should participate in making and enforcing the rules they live by. Munns closed a short speech at Grimm Hall on Wednesday night by saying to the assembled residents, "Only with your help, support and assistance will we be able to lick our problem."

# Year of Films Offered, First Series Costs \$3.25

Because of the success of last year's film series at the Falls Theater, a committee of faculty members and students has prepared another full year of films, classic, or soon to be, which can be seen at reduced prices. These films have received international recognition as the best in the cinematic world, the art form of the twentieth century.

There will be two series of nine films each. The ticket for the first series costs \$3.25, but individual tickets will be available at the door at the regular 75 or 85 cents. By purchasing the pass you save at least 50 per cent. Each program will run two nights and be shown at least twice a night. They usually will be shown on Tuesday and Wednesday. The first program is tomorrow, Tuesday, Sept. 19.

A list of the films in the first program follows.

Tickets are available in the Student Center, at the Coffee House or from Professors Robert Beck, Robert Pionke, Mary Barret, John Lorence, Scott Muller, Wayne Wolfe, Bill Webster, Terry King, Frank McCann, Daryl Gease, and John Buschen. FOREIGN FILM FESTIVAL 1967

Taste of Honey - an English film starring Rita Tushingham (of "Leather Boys", "Girl with the Green Eyes", and "The Knack"). She becomes pregnant by a

Negro sailor, is rejected by her mother, and comes to rely on a young homosexual. Slice of English life.

Henry V - superb Shakesperian drama starring Sir Laurence Olivier. It is filmed partially in a reconstructed Globe Theater to show the excitement of 16th century drama, but also gives full display to the great battles of the Hundred Years War between France and England.

Battle of the Sexes and I'm Alright Jack - Two Peter Seller's comedies, the first involving his problems with the fair sex and in the second, Seller's plays one of his most famous roles as a shop steward in a brilliant satire of labor-management relations.

Man from Rio - French film starring the most popular French actor of today, Jean-Paul Belmondo, as he romps through Europe and Brazil in one of his most amusing comedy roles.

Shameless Old Lady - One of the Best Films of 1966 on every list. This is a French movie starring the elderly but magnificent Sylvie, showing a superb actress at her best. C'est formidable!

Aren't We Wonderful - a brilliant, biting German satire on what happened to a typical Nazi leader after the Second World War, who was not discovered, tried, or condemned.

Bicycle Thief - one of the first and best

Continued on page 12

# A Page of Editorial Comment

## Just Watching People

It's very interesting what one can observe on this campus by just watching people. Everything from professors trying desperately to instill knowledge, to a student leader fulfilling a dubious extra-curricular role.

A man can play many roles in our multipurpose society many of which denote a fair amount of sophistication. However, one man played one role last Thursday night which we can only wonder at. The man was Ron Pressley, a junior, (Student Senator, BMOC etc.) and the role was well...a turkey to say the least and it took place last week during freshman initiation.

During the first act Mr. Pressley played opposite an attractive, but unwilling, freshman actress who was suddenly cast as heroine at the hands of Simon (Ron Pressley) Legree. The act was brief but to the point with the heroine landing, rather unladylike in a fountain which adorns this campus. At the hands of, nonetheless, Mr. Legree she floundered helplessly with an evil smirk of triumph on the face of Legree. Not Broadway material, but not bad for an amateur production.

Act Two opened with the noisy sounds of motorcycles. As heads turned toward the sound Mr. Pressley came roaring across the lawn (also the stage for the entire production) on the back of a cycle steered by a lovely young bit actress. As Pressley waved to the crowd only stares greeted the star of the show. It seemed almost too unreal to the people that a respected campus Senator would take part in such a bad production.

Mr. Pressley . . . naughty, naughty for such an amateurish show.

## Church vs. State

The relationship of church to state has long been debated in the United States and now this very question situation has touched the campus at River Falls.

In the rules the Student Senate has concerning what can or cannot be considered a legal campus organization there is a requirement that no club can have a discriminatory clause in their constitution. However, both the Catholic Newman Club and the Lutheran Gamma Delta have presented the Senate with constitutions containing such clauses.

The discriminatory sections mentioned state in essence that only members or the religion involved can hold offices on the internal governing board of the club. A person of any religion, however, can become a member of the club.

The Senate has asked the two religious clubs involved to present just cause for a discriminatory clause or risk losing their status as an official campus organization.

Several interesting points present themselves in this case. On the one hand a religious group is breaking an anti-discrimination provision of a state institution. However, it can be construed that a state institution is telling a religious group who can or cannot be officers in their organization which is contrary to both the First Amendment of the U.S. Constitution and Section 187.12 of the Wisconsin Statutes which states the Roman Catholic Church has the right to choose "two laymen, practical communicants of such congregation" for the churches governing internally. The First Amendment guarantees the right of people to worship as they please without state or Federal interference. The Student Senate could be acting contrary to both of these legal doctrines.

The Editorial Board feels there are practical reasons for the feelings of both parties involved. The religious groups want members of their own religion as officers for better communication between the hierarchy of the church and the club and for a more cooperative spirit in the club. They are primarily church affiliated organizations concerned with the furthering of their own particular faith. As such, they want to keep the clubs hierarchy "in the family" for very obvious reasons.

The Senate is concerned because a school affiliated club is limiting their governing boards to certain people which is discrimination. A very good point indeed but is it valid in this case?

We would like to suggest that a state agency, such as this university, has no right to tell a religious group how to govern themselves. There should be a clause in the Senate's constitution allowing for the complete self governing of a religious group. If the Senate attempts to tell the Newman Club or Gamma Delta how to conduct their internal affairs then we're afraid drastic consequences could follow.

Historically the church has been allowed complete freedom from any state or Federal control and this must be maintained. The Senate must provide for religious groups or this historic freedom will perish.

## The Ferret

By Michael Brecke

On page one of this issue of the Student Voice, there is a story announcing the erection of the "Free Spirit Plaque." This story also gives the history of the plaque. I will not dwell on the history of one of our only intellectual traditions, but I will dwell on the idea of "Free Spirit."

The "University where the free spirit prevails," is a haunting phrase. The "free spirit" has meant to some a license for any kind of conduct, to others it has meant the right to pursue ideas. Which concept is right?

Let me make it quite clear that "license for any kind of conduct" has nothing to do with "the free spirit." The "free spirit" does mean that we must constantly defend and reaffirm the concept that University students have the right to pursue "truth" where ever that pursuit may lead them. Students have the obligation to challenge ideas and vice versa.

As we discuss the "free spirit," we nearly always here the words "students rights" associated with the phrase. Immediately when we here the term students rights many of the "status-quo types" will bring up the term responsibility. Nine times out of ten, students today will react negatively to the term "responsibility." Why?

When we do discuss something as sacred as the "free spirit" as a freedom to pursue ideas, we presuppose that "there

is responsibility." At WSU-RF this presupposition is something which leads us into a trap. At WSU-RF we CAN NOT PRESUPPOSE THAT STUDENTS ARE RESPONSIBLE. For example we have presupposed that student leaders are responsible; we are now distributing a Mele-team two years late because a student leader was supposedly a responsible editor. Two years ago we had wide spread property destruction, this time not by student leaders, not by members of the "general" student body. Why?

With the idea of "free spirit" goes the responsibility to allow this concept to be constantly defined and discussed. If we students do not take time to pursue ideas, but do take the time to accept general license for any conduct "just for kicks," then we are not a University, but rather a playground.

I've asked lots of questions, why this and why that, I would like some help in trying to answer them. We need to know very desperately what the "free spirit means," and what our responsibilities are.

If anybody has any ideas drop us a note. Maybe together can understand what our "namesake" is trying to tell us.

Watch the Student Voice for its new feature, the Voice Soapbox. This feature, with your help, will appear each and every week.

Also please use the Feedback columns, this is your opportunity to express yourself.

### STUDENT

"WHERE THE FREE SPIRIT PREVAILS"  
WISCONSIN STATE UNIVERSITY-RIVER FALLS

# VOICE

The STUDENT VOICE is a student newspaper, written, edited and financed by students of Wisconsin State University-River Falls. Opinions expressed in editorials are those of the members of the VOICE staff.

VOLUME 52

NUMBER 2

Published weekly during the school year, except for vacations, holidays, and during exams, by the students of Wisconsin State University - River Falls.

National advertising representative is National Educational Advertising Services, 18 East 50th St., New York, N.Y., 10022.

SUBSCRIPTION RATES

Delivered free to servicemen \$3.00 per year  
SECOND CLASS POSTAGE paid at River Falls, Wisconsin  
State University-River Falls, North Hall, River Falls, Wisconsin, 54022.

Editor  
Michael Brecke  
Managing Editor  
Richard Marshall  
Sports Editor  
Robert Halverson  
Editorial Editor  
Michael Norman  
Feature Editor  
Regina Costigan  
Advertising Manager  
Paul Drystad  
Adviser  
Lorin Robinson

# Feedback

## Sit In or Eat Out

Dear Editor:

In this age of protests there have been many names for many causes. We have had sit-ins, walk-ins, talk-ins etc. I am suggesting something slightly different, an eat-out. Is it possible that inflation has spiraled to a point where a serving of 1/4 chicken at the cage has risen from 55 cents in the spring to 75 cents in the fall, a price raise of 33.3 per cent.

I am suggesting that we all eat out until this situation is either explained or rectified. Have costs actually risen that much or is Ace Hosts Inc. merely taking advantage of us?

E. Britton

## Good Taste?

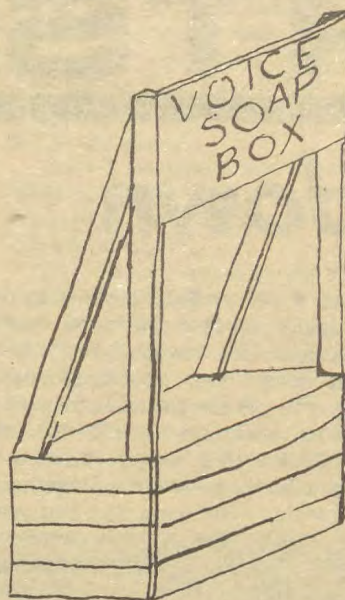
To the Editor:

Most persons would agree that freshman initiation should be an event in which new students are introduced to the campus and to other students. They would further agree that this event should be carried

out in good taste and with proper respect for all Falcon symbols and monuments on the campus.

Last Thursday night Mr. Ron Pressley, a Student Senator and a senior at WSU-RF demonstrated for a freshman girl the feelings he and his friends had for newcomers. About 6:30 last Thursday evening Mr. Pressley picked up a freshman girl and threw her into the fountain erected to the memory of Dr. Mel in Wall. Of all people to commit such a childish act Mr. Pressley should know that such actions cannot be overlooked, much less excused. Perhaps "Stratton's Own Beard" feels that these actions enhance the charm of freshman initiation. If so, he is badly mistaken.

Perhaps it should be suggested that in the up coming elections to replace Senators Linda Graves and George Wilbur that some consideration be given to replacing Ron Pressley.  
Al Murry



QUESTION  
THIS  
WEEK

By Terry Bestul  
Voice  
Soapbox  
Reporter

There will be an addition to the Student Voice next week. It will arrive in the form of a new feature called the Voice Soap Box.

Every Tuesday at 10 a.m. and Wednesday at 9 a.m. your girl in the Student Center will be asking your opinions on a current topic. Your opinions and your picture will appear in the following issue of the Student Voice.

Throughout this year we will be covering subjects as serious as the mandatory sterilization the Indian government is considering and the desecration of the American Flag. Our first topic will be "Do you think Freshman Initiation accomplished anything?" If you have an opinion on this why don't you stop by and tell us about it? We'll be glad to hear from you. If you can't make it and do have an opinion why not write in and let us know? All letters will be welcomed.

This is something we've all been waiting for, so come join in. We hope you will receive it with as much enthusiasm as we did. We can't make it go without you. This is your chance to be heard.

## Craftsmen Show In University Gallery Sept. 18 to Oct. 10

Two graduates of River Falls will have art work represented in the annual Wisconsin Designer-Craftsman Show (1967-68) which will open in the Student Center Gallery on Monday, Sept. 18 and continue until Tuesday, Oct. 10. Don Trudell is showing two vases and Fred Hunter's work is a ring for two fingers. Other works entered use such craft media as ceramics, wood, fiber, and metal and all 94 works by the 47 artists were entered in a statewide competition. The works are shown at various universities, schools and museums throughout the state.

All works are available for sale directly from the artists but none will be available until the show has made its full circuit. Persons interested should contact a member of the art department for the address of the artist.

The University Gallery hours are:  
Monday & Wednesday 10-3:00 and 6-9:00  
Tuesday & Thursday 12:00-3:00  
Friday 10-3:00  
Sunday 2-7:00

## Music Department Has Openings

The Music Dept. at WSU-RF has openings in nearly all of its organizations for the 67-68 school year.

According to Dr. William Abbott, chairman of the department, several of the music groups are short of brass players. To date, they are in specific need of baritone players and trombone players for the University Band.

Dr. Abbott said that he would like to make it clear that participation in a musical group does not require a music major or minor. He added that the "University band is for anyone who wants to blow a horn."

The River Falls band does not march and no auditions are required for students to become members. For smaller ensemble groups etc., auditions are required.

The music department's vocal groups are still open and the Women's Chorus

has several positions yet to be filled.

If anyone is interested in participating contact Dr. Abbott at the Music Office in South Hall. Auditions for the smaller groups can be arranged with their conductors.

## DANCE

At Das

"the  
Spielhaus"

Hy 35 No. River Falls

"The Distant Sons"

Fri., Sept. 22, 1967  
8:00 - 12:30

\$.75 Singles  
\$1.00 Couples  
Refreshments Available

R.F. Students Only

Door Prizes - 6 Packs

Sponsored by Kappa Theta

## Student Senate Insurance Plan

The deadline to have your student insurance forms in the mail is rapidly approaching! September 20th to be exact. After this time enrollment can be obtained only through the student senate office.

The plan is offered to all full-time students at Wisconsin State University, River Falls campus. The cost is only \$33.00 for the entire year.

Included in the plan are benefits of up to \$1,000.00 for each accident and a \$1,000.00 accidental death benefit.

Identification cards for students enrolled in the student insurance program and enrollment cards may be picked up at the personnel office.

**LOUIS M. DANIEL, CLU**

Agency Supervisor  
David Richardson and Matt Putzier  
Associates

1500 Pioneer Building  
St. Paul, Minn. 55101  
Phone: 224-2375

Underwritten by the Continental Casualty Company,  
Chicago, Illinois 60604.



**BERTELSEN'S  
COLLEGE  
PHARMACY**

Don Aspenes, R.Ph. River Falls

# Voice SPORTS

## Hal's Lowdown

by Robert Halverson  
Sports Editor

Congrats are in order for Coach Gwynn Christianson and his Falcons. Their 13-12 upset win over the Pioneers was certainly a helluva good way to start the conference season.

Brian Kreibich has to be the hero of Saturday's game. His three interceptions certainly sparked the Falcon defense. The sophomore from Alma hustled throughout the game knocking down Platteville passes. The entire squad had more "pop" this week than they did in the disappointing opening loss to Augsburg. I've always felt the Shrine game is too early. The gridders have only eight days to prepare which is not enough, obviously.

Looks like Monty Krizan, the injured Falcon griddler is improving. He's the one seen at Ramer Field hobbling along the sideline in the Vets Club jacket. Also, Dave Rosga, the Falcon cornerback has been released from the hospital and is resting at home.

### Bowling Team

Bowling Team tryouts will begin tonight and continue throughout the week. There will be a 54-game rolloff with each candidate bowling nine games each night for six consecutive nights.

Coach Jim Schmidt invites all student kegglers with an average of 170 or above to report to the game room this evening and participate in the rolloff. Seven bowlers will be selected to make up the squad with five, four regulars and one alternate, traveling to each match.

The team's first competition is scheduled for Oct. 14 in an all-conference meet at Platteville.

Hockey at River Falls appears to be in some trouble as last year's head coach, Walt Granata, has resigned his teaching position here. An upcoming coaches meeting will decide the fate of the exciting winter sport here. With the influx of the Twin Cities hockey stars to RF, we should be the power of college hockey in Wisconsin. With guys like last year's captain, Jack Norqual, and former all city goalie Pete Boelter, the Falcon pucksters are exciting to watch. These kids are dedicated to the sport also as they do all their own work such as putting up the boards and flooding the rink plus paying for practice time on Aldrich Arena often for practice on good fast ice. Incidentally that awful looking area on the Ramer parking lot with high grass and old shack is the Falcon hockey rink.

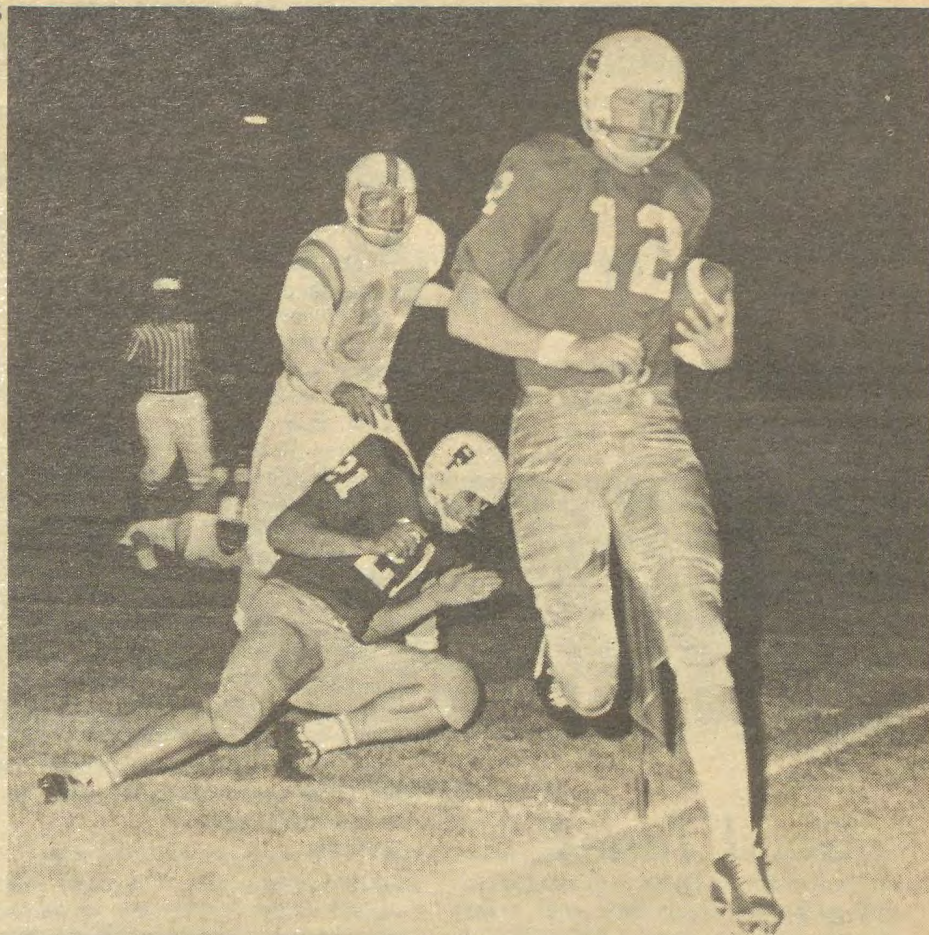
Falcon griddler Rich Elrod was married Saturday morning at Clear Lake. Sure makes for a short honeymoon as he was back to play in Saturday night's game.

Platteville's passer Al Charnish was the nation's third leading passer in 1966. He tossed four touchdown passes in leading Platteville to an opening win over Dubuque.

Defending conference champ Whitewater State was upset by Stevens Point Saturday at Point. The Pointers were pegged for second or third in the conference but whipped the Whitewater Warhawks 19-13. Whitewater is also district 14 National Association of Intercollegiate Athletics champion. They finished second in the national NAIA playoffs and Forrest Perkins was named national coach of the year.

Bob Dorn, the former RF quarterback is now starting at the same position for the Warhawks.

Hal's fearless prognosticative effort for the week sees the charged up Falcons beating the Yellowjackets of Superior 27-20. And the Twins will win the flag in the tight AL race by 1/2 game.



FALCON QUARTERBACK JERRY Trooien races into the end zone with the Falcons first touchdown. Assisting Trooien is end Tim Bue.

## Face Yellowjackets

The Falcons, hot from their one point upset over Platteville travel to Superior Saturday to tangle with the Yellowjackets at 8 p.m.

The Yellowjackets finished 8th in the WSUC last year but are explosive on offense. The northern eleven are paced by seniors Jim Osborn, quarterback, and

Mel Thake, 1966 first team AP little all america. Superior has 29 lettermen from the 1966 squad back. Osborn will probably aim most of his aerial shots at Bob Peck, last year's conference pass receiving leader with 55 for 752 yards. Superior travelled to Menomonie Saturday to defeat the Blue Devils 27-21.

## Intramural Bowling

The intramural bowling league is now being organized for this academic year. The bowling nights will be Tuesdays for the members of the Falcon league and Wednesday for those who qualify for the Feather league. Rolloffs will determine the league you will bowl in.

This year's teams will be sanctioned by the American Bowling Congress. An entry fee of \$4.00 per team (4 member teams) will be required. An additional \$4.00 will be required to back up any team who fails to appear their scheduled night.

Each bowler must pay \$1.00 per night (plus 10¢ if shoes are rented). This year's league will be a handicap league. A member's handicap will be determined after he bowls his first three games, and those games will be considered competi-

Each team should consist of four regular bowlers and two substitutes. Each team should elect their own captain and list his name and phone number at the top of the entry form.

### Hi Students

This Is  
**Pops Popcorn**

Announcing  
**Free Butter**  
On Your Popcorn  
TUESDAY, SEPT. 19TH

**POP ARMSTRONG**

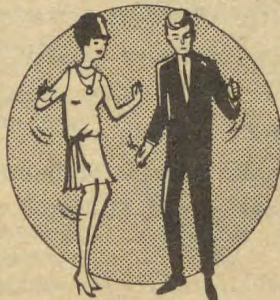
Attention  
**R.F. Students!!**

(18 Years and Older)

**Every Thurs. Nite  
Exclusively For You**

Before 9:30 p.m. - 35c & R.F. I.D.  
After 9:30 p.m. - 60c & R.F. I.D.  
Without R.F. I.D. - \$1.00

**DANCING**



ALSO:

A variety of bands throughout the season.  
Rock-roll Friday Night at regular price  
& Old Time Saturday Night

THIS THURSDAY  
NIGHT

SEPTEMBER 21

THE BEDLAM FOUR

**Come Early and Save!**

**Proch's  
Popular Ballroom**  
Ellsworth, Wis.

Play Superior Saturday

# Falcons Upset Pioneers, 13-12

by Jerry Neve  
Voice Sports Writer

The Falcons, bouncing back from a 41-0 whitewash by Augsburg last week, nipped the Platteville Pioneers 13-12 here last Saturday night.

Coach Christensen's team was led by sophomore quarterback Jerry Trooien who passed for one touchdown and ran for another and then kicked the deciding point after in the third quarter which spelled the difference.

On defense Alma sophomore Brian Kreibich stood out as he picked off three Al Charnish aerials returning one 70 yards in the third quarter.

The Pioneers mounted the first scoring threat in the first quarter after the Falcons were forced to punt. They drove to the 34 before attempting a field goal which fell short.

After an exchange of punts Falcon halfback Harold Blank carried back the next punt to the Pioneer 37 yard line. Platteville held and took over on downs after stopping halfback Steve Vail inches short of a first down.

Charnish, the nation's third ranked passer last year, got the offense rolling as the Pioneers took to the air. The drive was halted when Charnish fumbled as he rolled out from the Falcon 27.

The Falcons couldn't do anything with the ball and Charnish who completed 28 out of 45 for 349 yards started connecting again. Charnish completed seven passes in the 75 yard drive which was climaxed by a two yard pass to his brother Chris Charnish with 7:25 to go in the half.

The Falcons came storming back starting a drive on their own 35. Trooien sent Mike Danielson and Vail up the center for 3-4 yards at a crack and picked up 26 yards himself when his receivers were covered. Trooien carried to the 7 where Danielson cracked to the five. Then on a bootleg Trooien cut the corner just inside the flag for the Falcon's first six points of the year. The extra point try was off to the right and the score stood at 6-6 at halftime.

Platteville took the second half kickoff and started a march from their own 19 all the way to the Falcon 15 where Kreibich grabbed a deflected pass on the three yard line. Charnish accounted for all the yards through the air as he completed five out of six during the drive.

The Falcons then started their longest drive of the evening with Trooien sending Vail and Danielson through the line and hitting Blank and Tim DeLawyer when the line stiffened. A big third down play saw

Blank catch a 21 yard pass to put the ball on the Pioneer 33. John O'Neill, St. Paul freshman halfback, slipped off right tackle on a first down play to the 20. Then Trooien stepped back and hit Blank in the corner of the end zone for the Falcon second TD. The Falcons were penalized five yards for too much time and so Trooien had to split the uprights from seven yards out which he did and the score stood at 13-6 with 7:46 to go in the third quarter.

Kreibich halted the next Pioneer drive with an interception on the Falcon 15 which he carried to Platteville's 15 yard line. From there Danielson cracked the line three straight times for 11 yards to the 4 where the Falcons were guilty of a holding penalty which moved it back to the 19. Trooien picked up 10 yards on a second down play but then was thrown for

Platteville held and Blank was forced to punt with the Pioneers taking over on the RF 22. Charnish again starting riddling the air with passes accounting for 55 yards on a drive which ended with Charnish hitting Tom Kohr in the right corner on a 16 yard pass play with 9:40 remaining in the game.

The all important extra point try was blocked by the onrushing Falcons led by freshman Pete Barrington who got his hand on the ball.

The Falcons were forced to punt after knocking valuable minutes off the clock and Platteville immediately found themselves with their backs to the wall after a clipping penalty and a six yard less when Charnish was dumped.

The Pioneers punted from their 12 and RF took over on the 43. Danielson hit the line twice and Trooien ran a boot

leg but fell short of first down yardage. Blank put the Pioneers back on their own 16 with 2:23 showing on the clock.

Charnish found his brother Chris open on the 39 but the younger Charnish was unable to hold onto the ball after being hit and Jon Ubbelohde recovered his fumble.

Trooien started running the clock out sending Danielson up the middle for eight straight plays picking up first downs on the 28 and 10 yard line. The enthused Falcon squad even called time out with seven seconds remaining with the ball on the 4 yard line in hopes of pushing across another TD.



DAVE SEMPF (45) stops a Pioneer ball carrier during Saturday night's win. Coming up to assist Sempf are Tom Carroll (51) and Dennis Glass (92).

a 10 yard less attempting to pass. A fourth down pass to Blank on the three yard line was broken up and the Pioneers took over.

Charnish took to the air once again and took the Pioneers to the Falcon 20 before two penalties pushed them back to the 32. On a third down play Kreibich broke up a pass on the 12 yard line. With time running out in the third quarter Charnish was nailed by sophomore John Egan and junior Glen Kohl for a four yard loss back to the 36 where the Falcons took over.

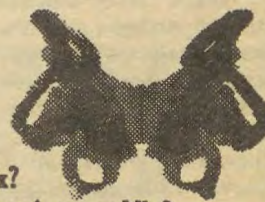
## Swingline Ratty Rorschachs

Test yourself...  
What do you see in the ink blots?

[1] A Japanese judo expert?  
Just an ink spot?  
Mount Vesuvius?



[2] An ax?  
A Gene Autry saddle?  
TOT Staplers?  
(TOT Staplers!? What in...)



## This is a Swingline Tot Stapler



98¢

(including 1000 staples)  
Larger size CUB Desk Stapler only \$1.69

Unconditionally guaranteed.  
At any stationery, variety, or book store.

Swingline INC.  
LONG ISLAND CITY, N.Y. 11101

ANSWERS: 1. If you see a Japanese judo expert: you take things in your own hands. The ink spot: you're practical. Mount Vesuvius: boy, what an imagination! An ax: what a nasty temper you have! A Gene Autry saddle: you're the best! TOT Staplers: you should become a TOT Stapler salesman.

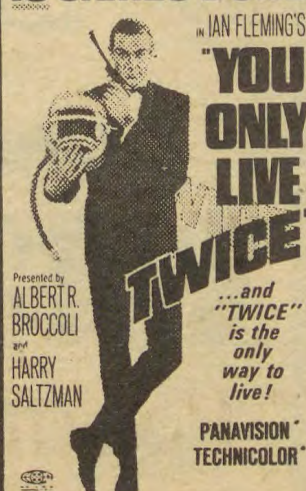
## FALLS THEATER

Ends Monday  
"A Guide For The Married Man"

Tues., Wed.  
"A Taste of Honey"  
Rita Tushingham  
A Foreign Film  
Adm. 75c

One Week  
Thurs. Thru Wed.

## SEAN CONNERY IS JAMES BOND



Adm. 50c - 75c

LET'S GO

HORSEBACK RIDING

At

Kinni Valley Riding Stables

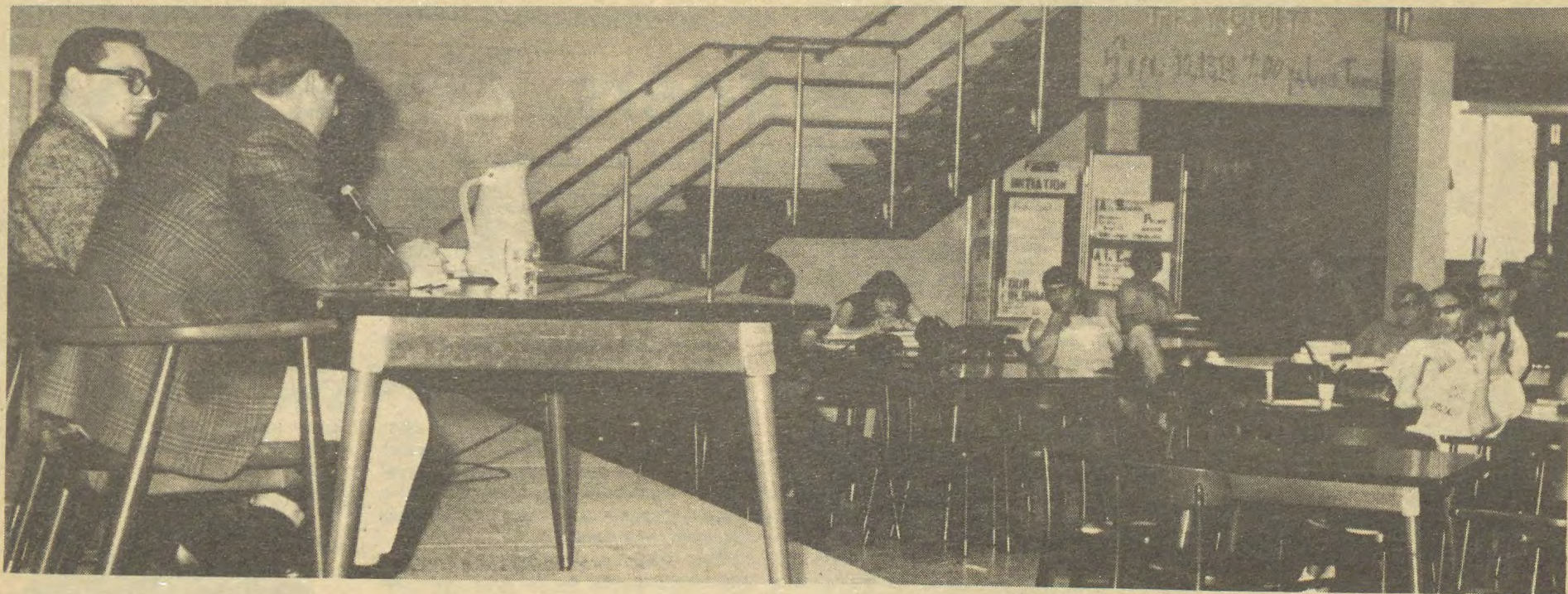
Located 5 Miles Northeast on Highway 65

Also

Hayrides or Sleighrides are great party ideas for large groups such as sororities, fraternities, church groups, etc.

We can handle up to 120 people at one time.

Call Us For Rates  
Phone: 425-6184  
Tom Lowe



The "Free Spirit Forum" held last week concerning Freshmen Initiation was sparsely attended as this photo illustrates. Few freshmen and even fewer upper classmen attended this free discussion.

**WOULD YOU BELIEVE?**

Only one in 10 students attending the nine Wisconsin State Universities commutes over 15 miles.

Students pay approximately 45¢ of every dollar the Wisconsin State University system receives.

One of every three students who attended the Wisconsin State Universities last year received some form of state or federal financial help.

More than 1,800 students who attended the nine Wisconsin State Universities last year received GI Bill checks, taking advantage of the federal government's "Serve First, Learn Later" program.

The nine Wisconsin State Universities offer courses in some 70 areas of study.

Average tuition and fee costs for the year for students attending the nine Wisconsin State Universities are \$325 for Wisconsin undergraduates, \$369 for Wisconsin graduate students, \$740 for non-resident undergraduates, and \$788 for nonresident graduate students. Average cost for room and meals in State University residence halls is \$704. Students pay approximately 45¢ of every dollar the university system receives.

The Richland Campus at Richland Center is the first new freshman-sophomore campus to be completed in the State University system.

Nine new residence halls opening this fall at the Wisconsin State Universities accommodate 7,368 students, bringing total residence hall capacity on the nine campuses to 28,520. Average cost for room and meals in residence halls is \$704.

This fall Wisconsin State University-Oshkosh will open its second high rise residence hall. It houses 1,240 students in double rooms.

**WRA TO MEET**

Women's Recreation Association will hold a meeting Wednesday, September 20, 5:30 p.m. in the Student Center Ball room. Free swim from 6-7. The gym will be open for girl's intramural on Wednesday 5-9 p.m. all year.

**Things to Happen**

The 1967 Homecoming Committee is planning to publish a Homecoming booklet which will be available on Oct. 2. A picture of each queen candidate will be printed in the booklet. For publishing reasons it will be necessary that each organization turn in a 5 x 7 photograph of their candidate into the Homecoming Committee (Jon Graham Sharon Seilback, or Andy Anton) before 12:00 noon, October 20. No photos will be accepted after the specified time. If there are any questions concerning this, please

\*\*\*\*\*

Actor's Workshop Tryouts Monday at 7:00 p.m. in the Pit.

**READ and USE THE WANT ADS**



**Welcome Students & Faculty At**

**"the Spielhaus"**

**Hy 35 No. River Falls**

Charcoaled Bratwurst and Steak on Bun  
Enjoy Your Favorite Beverages  
Dancing - Pool - Pinball  
Live Music Every Fri. Nite

**Doug & Rita Jenkins**  
YOUR HOSTS


**Pete's Putt**

**Lighted Miniature Golf and Driving Range**

**South on Highway 35 Across from College Farm**

**SHADY GROVE**

Hwy 35 North  
Ellsworth, Wisconsin



**College Students**

**WELCOME**

Monday thru Friday 1:00 - 12:00  
Saturday 2:00 - 12:00  
Sunday 4:00 - 12:00  
(18 Years and Older)

**CUDD'S COURT**

Hwy 35 South  
(Across from College Farm)

Trailer lots approx. 40 ft.x100 ft. 1,000 sq. ft. black top per lot. \$40 a month (includes school tax) water, sewer and garbage pickup.

Coin operated Washers and dryers

**425-2049**



**Kulstad's**

**Tie of the Month**

**New clubs**

If you figure, like we figure, clubs are a fine choice in neckwear to coordinate with the window pane shirt. \$3.00

**Kulstad Bros.**  
**Men's Wear**



# Drip Drip Drip or -- My Roof's Got a Hole in It



Dr. Wayne Wolfe, looks skyward to see whether or not the water has quit dripping. Dr. Wolfe found his office rather soggy when he arrived on the job early Friday.

"If it weren't for the prestige, I'd almost be willing to forego having one of the few offices with running water," Dr. Wayne Wolf said Friday morning.

The Administrative Vice-president stopped at his office prior to an 8 o'clock class Friday to find his desk top covered with soaked papers and the office floor laced with rivulets of water.

Plumbing fixtures installed on the third floor the previous afternoon had developed leaks during the night.

Although the suspicion lurks in Wolfe's mind that the whole thing may be a plot to force him to clear a usually cluttered desk, he said, "For a real status symbol, I hope next time they put colored lights on the waterfall."

### WANT ADS

Will provide rides to Minneapolis and St. Paul every Saturday. Will leave the Student Center at 9 a.m. and leave the Cities at 5:30 p.m. \$1 per rider.

Personals  
Ermma--call Fred.

Lost and Found  
Lost: One color TV set from Grimm Hall. Please return.

### WANT ADS

Wanted  
Football team points  
One Meletean out on schedule.

For Sale  
One color TV set. See Irving Smidlapp at Bernie's Pawn Shop.

## Archives Hold Key To Past — Present

"Extremists and Crackpots" reads the label on a file drawer in the Area Research Center, just around the corner from the Little Theatre in Chalmer Davee Library.

Dr. James T. King, professor of history and director of the Center, made the label. In the drawer are filed papers on the Jon Birch Society, Fidel Castro, George Lincoln Rockwell and the Nazis.

Dr. King is happier about another file recently placed in "the archives" by the department of English: the Frank Chisholm papers. Dr. Frank Chisholm, who died in March 1965, was chairman of the English department.

Included in his papers was the manuscript for "Chisholm's Law," an article that was published in "Motive" magazine and "Best Articles and Stories", both in 1959. The article appeared also in an anthology of pseudo-scientific articles, entitled "The Stress Analysis of a Strapless Evening Gown." The Law, set forth by Chisholm, states that "If anything can go wrong, it will."

Also included in the papers are taped lectures for the semantics course taught here by Dr. Chisholm and notes for books he has written.

The River Falls Area Research Cen-

ter has three sources for its materials, according to Dr. King. They are the State Historical Society, graduates of WSU-RF and other interested persons.

The Center is a branch of the Historical Society, administered locally by the River Falls department of history in general and by Dr. King in particular.

WSU-RF graduates can be of great help to the Center, says Dr. King. They are aware of what is needed and often have access to materials concerning the history of the University and of western Wisconsin.

Two years ago Dr. King sent out an appeal, through the University's news bureau, to residents of western Wisconsin for documents, books, papers or other historical materials. Responses were gratifying, and among materials received were the memoirs of Lucian Bennett, a member of the Wisconsin cavalry that enlisted in Earl's Raiders.

Gordon Olson, a WSU-RF graduate student in history, is making use of the papers while writing his master's thesis on "Lt. Isaac N. Earl, Union Raider." Olson is a 1966 graduate of River Falls who has been attending graduate school on a federal fellowship.

## Senate Election

# NOTICE

Two Student Senate positions are vacant following the resignations of Senators Linda Graves and George Wilbur, and two new senators will be elected at an all school election scheduled for Wednesday, Sept. 27.

Candidates may pick up petitions, Rules to Govern Elections and Sign Regulations in the Personnel Office at 117 North Hall.

Petitions must have signatures of 50 students and must be turned into the Dean's Office by 5 p.m. Sept. 19.

Campaigning will begin at 12:01 a.m. Sept. 21.

## Falls Cafe

Located in back of Johnson Hall Dormitory

Wednesday - ¼ Chicken Special with dressing, potatoes, jello, rolls and beverage - \$1.15

Friday - Smorgasbord - \$1.35

Sunday - Dinners - \$1.35 and up

Short Orders

Everyday - Dinners - \$1.10

Open from 6:00 a.m. - 8:00 p.m. Mon. - Sat. & 9:00 - 7:00 p.m. Sundays

NOW OPEN Serve - Yourself



5 Minutes  
25c

Go in Car Clean

Highway 35 North - - Back of

Kinnic Oil & Kinnic Drive-In

Watch For Big Announcement Next Week

Try It In The Meantime

## NORTH STAR CAR WASH

Bob Durand, Owner

River Falls

# RF Student Since 1947?

Only a handful of staff members at Wisconsin State University-River Falls began their association with the University before Hampton Wilmot, a graduate student majoring in history. And only 15 can count more actual years on the campus.

"Hamp" began his education at River Falls in 1947, when he entered the laboratory school junior kindergarten at the age of four. Except for four years in the public high school, a semester of intern teaching and a semester of teaching in the New Richmond school system, he has been a student at the University ever since.

As a graduate student on a federal fellowship, Wilmot now occupies Room 305, North Hall, as an office and study room, along with ten other graduate students. When he was a pupil in the laboratory school, then housed in the east wing of North Hall, he attended seventh and eighth grade classes in the same room.

Kindergarten, first and second grade pupils had classes on first floor east, in the space now occupied by the financial aids counselor, the registrar and the housing bureau. Third, fourth and fifth grades were on second floor east, and the upper three grades climbed to third east. Ninth grade was added to the laboratory school a few years after Wilmot's time.

Wilmot earned his B.S. degree in 1966 with a double major, in history and English. He was an intern teacher during the first semester of the 1965-66 year and finished out the year as a regular teacher in the New Richmond system.

When the graduate program began at River Falls, Wilmot decided to work toward the Master of Science in Teaching degree, majoring in history. He was awarded a federal fellowship and expects to earn the degree by the end of the 1968 summer session.

As an undergraduate, Wilmot was a member of the Student Senate for three years and served as vice president during his senior year. He was president of his freshman class and a member of the Student Governing Board. He was elected to membership in Kappa Delta Pi, the honorary education society. In addition, he worked several hours a day in the book store of the Student Center.

A lifelong resident of River Falls, Wilmot has a strong feeling of loyalty toward the University.

"Our faculty is our strong point," he says. "In my own field, history, we are

unsurpassed. Dr. Peterson is internationally known for his research on Nazi Germany, and now that we have Dr. Wyman back, we are way out in front. Dr. King, of course, is well known in 19th century American history, and we have some new rising historians on campus."

Dr. Walker Wyman, nationally known historian, left River Falls in 1962 to become president of Wisconsin State University-Whitewater and returned this year as distinguished centennial professor.

Wilmot thinks the faculty-student relationship at River Falls can't be matched at any other institution.

"It isn't the artificial 'buddy-buddy' type of thing; it's a genuine interest in the student on the part of the faculty," he said. "The faculty members go out of their way to bring about a relationship that is helpful and encouraging to the student."

Wilmot is pleased but not surprised by the growth of the graduate program at River Falls since it was inaugurated in 1966. Dr. James T. King, professor of history, was astonished this fall, according to Wilmot, when he walked into a graduate class in history to find 25 enrolled; he had expected a dozen or less.



Hampton Wilmont, 'been here a long time.'

**h.i.s. Lambs Wool V-neck Sweaters**

*Huestad Brothers*  
CLOTHING

Men's & Boys' Furnishings, Hats, Shoes

**WOULD YOU BELIEVE**

We Have The Largest Selection Of Pipes In This Area

STOP IN & SEE FOR YOURSELF

Bring This Ad Along For A 10% Discount On Any Pipe In Stock

SEPT. 18 - 22 ONLY

**FREEMAN DRUG**

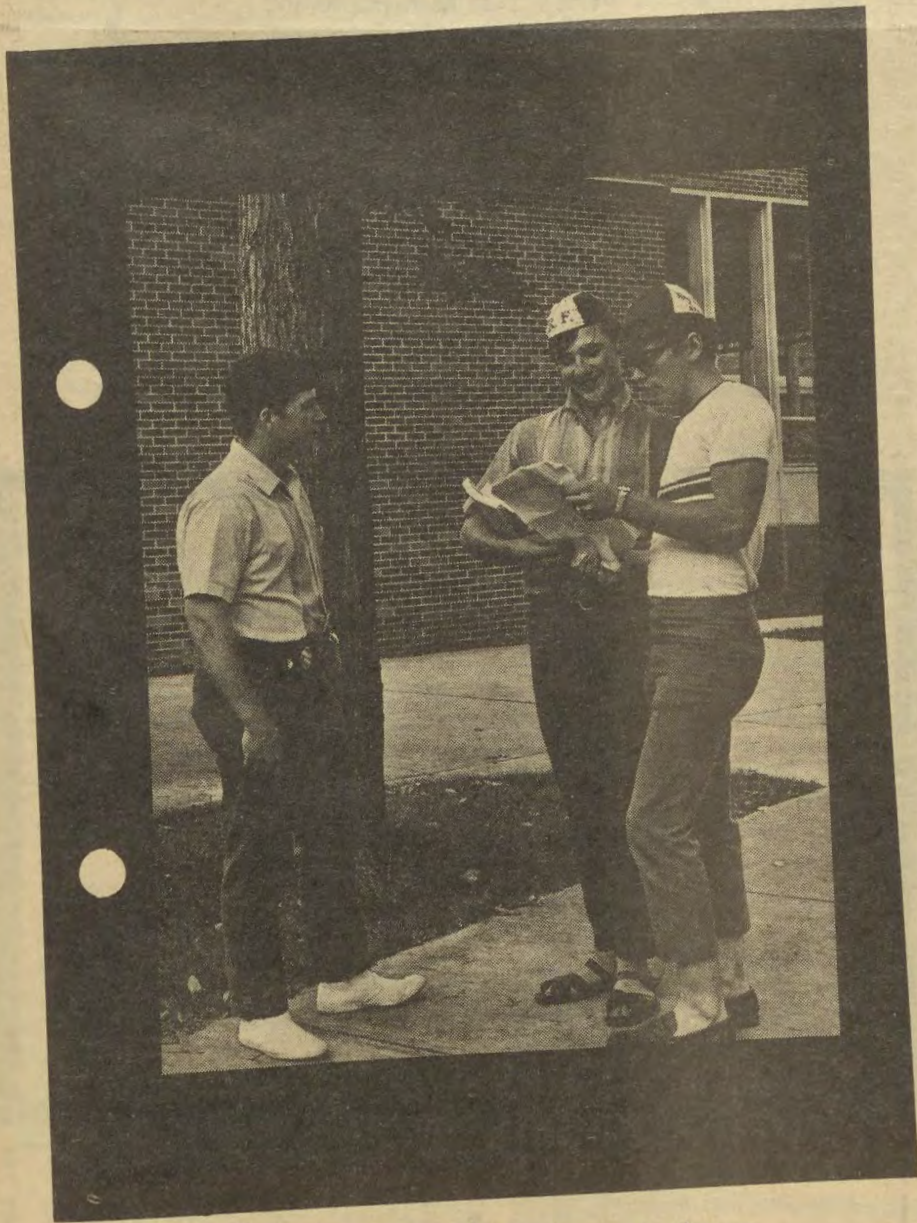
# Frenzied Freshmen "One of Us"



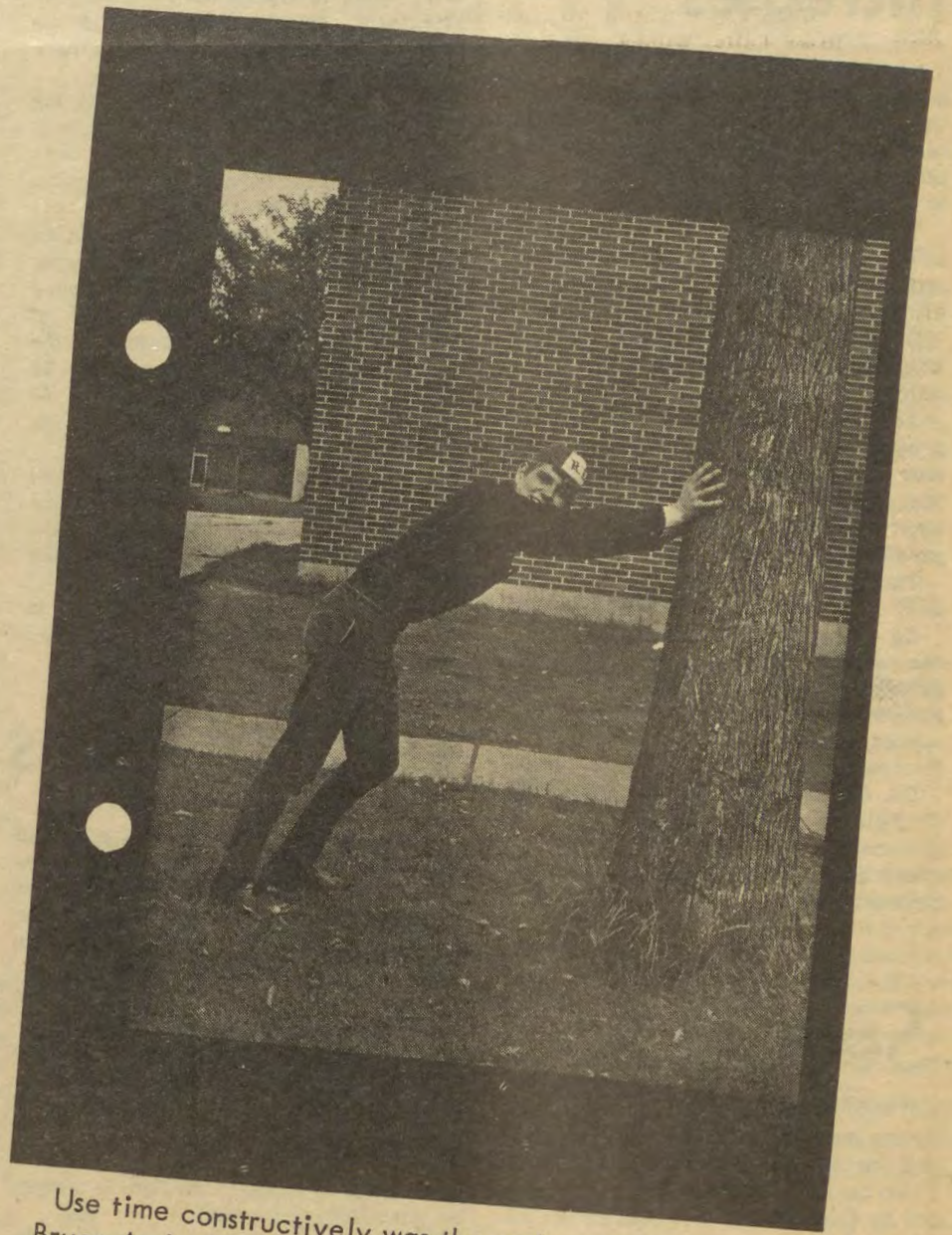
Mary Jo Fox started initiation with just a little confusion as she held her button in mouth as she worked to put her beanie on her head.



A watery mess was the out come as these happy college students splash and enjoy a fall dip in the waters of the Kinnic.



John Hoffman mighty sophmore is shown proving his mightyness to Allen Richter and Roger Field both lowly freshmen.



Use time constructively was the sophmore motto as Bruce Anderson illustrates by his "tree holding efforts.

# Cast Chosen For Fall Production

Dr. Josephine Paterek, director of the fall quarter major production of the University Theatre, announced Thursday evening the cast for her October production of Eugene O'Neill's "Long Day's Journey Into Night." The play, published after O'Neill's death, is an autobiographical account of his life as a young man and the problems which beset his family.

Cast in the role of Mary, the mother, is Jeanne Wall, a senior from River Falls. Jeanne has previously appeared

in "The Madwoman of Chaillot," "Dark of the Moon," and "The Heiress," and "A Blue Gate for Hester."

Leslie Kane, a junior from New York City, will portray the role of James Tyrone, the father, Les' credits at the University Theatre include roles in "The Madwoman of Chaillot," "The Visit," "The Lady's Not For Burning," and "The Physicists."

Portraying Edmund, O'Neill's characterization of himself, will be Michael Tillmann, a senior from Prescott. Mike

has appeared in "The Chairs," "Mother Courage and Her Children," "Charley's Aunt," "The Madwoman of Chaillot," and "The Physicists."

Jamie, the older brother, will be played by Steven Lockwood, a junior from St. Paul. Steve has played in "The Madwoman of Chaillot," "The Jewish Wife," "The Lady's Not For Burning," and "Dark of the Moon."

The Irish Maid, Cathleen, will be portrayed by Mary Ellen Hansen, a senior from New Richmond. Mary Ellen has played roles in "The Old Lady Shows Her Medals" and "Save Me A Place At Forest Lawn."

Dr. Paterek described the play as "an exceedingly challenging and intense drama." She says it will be difficult not only as it is long and demands a great line burden on the actors, but also because of the extreme depth of the characters and the constant intensity. Dates for the production are set for October twenty-fourth through the twenty-eighth.

Friday morning Mr. Glen Girtschen, a graduate student in the speech department, posted the cast for his Pit Theatre production of William Inge's "Come Back Little Sheba."

Cast were:

Lola . . . . .	Linda Draves
Maria . . . . .	Kay Millinczek
Mr. Coggman . . . . .	Ericka Johnson
Doc . . . . .	John Kuhns
Turk . . . . .	Gary Cuskey
Milkman . . . . .	Craig Adelman
Bruce . . . . .	Bob Kivela
Postman . . . . .	William Paterek
Ed . . . . .	Lewis Whitlock
Elmo . . . . .	Bob Priebe
Telegram Boy . . . . .	Charles Welch

Miss Marcia Magyar will act as assistant to the director.

Dr. Blanche Davis announced, also, that tryouts for the fall quarter Actors' Workshop will be held on Monday, September eighteenth at seven o'clock in the evening in the Pit Theatre (Room 25 North Hall).

## Regents Appoint Presidents At Other State Universities

The Board of Regents of Wisconsin State University will recommend the appointment of William L. Carter as president of Whitewater State University on Sept. 29. Carter, dean of the University of Cincinnati will replace Walker D. Wyman who resigned July 1.

Wyman has accepted appointment as distinguished professor of history at WSU-River Falls. Dr. Cord O. Wells has been serving as acting president at Whitewater since Wyman's resignation took effect.

Carter's position as president will become effective on Dec. 15, 1967.

At its Sept. 29 meeting the regents are also expected to name Prof. Lee S. Drey-

fus of the University of Wisconsin as president of WSU-Stevens Point. Dreyfus will succeed the late James H. Albertson. A successor to President E.H. Kleinpell of WSU-River Falls has not yet been recommended.

Dr. Carter is the author of three books and several reports in the fields of teaching and school administration. Before joining the staff of the University of Cincinnati, Carter taught mathematics in high school and at Western Illinois State University. He also served as professor of mathematics and director of the demonstration school at the College of Guam in Agana Guam.

## MORE VETERANS ATTEND UNIVERSITIES

More than one-half million veterans entered training during the first year of the educational program under the 1966 G.I. Bill, William J. Driver, Administrator of Veterans Affairs, announced today.

The Administrator predicted an even more successful program in fiscal year 1968, with well over 600,000 veterans expected to enter colleges and universities throughout the country.

The peak enrollment month during fiscal year 1967 saw 323,000 students on campuses, but that figure is certain to be exceeded during the coming year, the Administrator said.

The average G.I. Bill student during FY 1967 was 28 years old, and 45 per cent of the students had one or more dependents. Seventy-six per cent of the veterans entered courses at the college level, compared to about 30 per cent during the World War II GI Bill program and 50 per cent when the Korean G.I. Bill was in effect.

Approximately 15 per cent embarked on graduate studies. Statistics show that 93 per cent of the veteran-students had completed four years of high school.

For 35 per cent of the students it was their first year of college, Driver said.

## Year of Films

Continued from page 3

films by Vittorio de Sica in the Italian neo-realist school. The film creates great drama out of the lives of a simple man and boy. The film helped set the style for Italian movies since World War II and generally of the neo-realist school.

Marx Brothers Double Feature - two of the best comedies of these classic American comedians. Their slapstick style is done with marvelous grace and timing.

Forbidden Games - a French movie starring two children and showing the effects of the Second World War on them. The emotional force of the film is simply put powerfully presented.

Nine superb film programs running from September 19 to January 24 for only \$3.25. Each program runs two nights and will be shown at least twice a night, so that conflict of dates should not occur. With the special pass, admission amounts to only about \$.36 per program, less than half of regular admission.

We hope you enjoy this series, and we are preparing another series to run from January to the end of May.

## Graduate School Enrollment Increases

WSU-River Falls will have 55 fulltime graduate students and 125 parttime graduate students beginning with the fall term. The graduate school will also offer the newly approved Master of Arts in Teaching beginning this fall.

This program is for anyone who holds a bachelor's degree in liberal arts or science and desires to become a teacher. The program includes a teaching internship, graduate study in education, and graduate work in your major field.

According to Dr. Phil Anderson the program can be covered in two summer sessions and the intervening school year. This includes an 18-week semester of public school teaching which pays a \$1,200 stipend.

The degree requires 63 quarter credits, 15 of which are in intern teaching.

As a Master of Arts in Teaching you can qualify in any of the following subject areas: agriculture, English, speech, history, social science, mathematics, biology chemistry, physics and elementary education.

Dr. Anderson also stated that 12 of the 55 fulltime students are attending the university on Federal Fellowships. He added that of the 125 part time grad students 40 have assistantships.

## Senate

Continued from page 1

Fleury held back on any other reports until the budget is released.

Two basketball cheerleaders were present to request that a student senate advisor be appointed to represent them. They reported that the cheerleaders need money for new uniforms and for traveling expenses and that the girls want to feel they are represented in the Senate. Ron Presley was appointed cheerleader advisor.

The next meeting of the Student Senate will take up an amendment to their by-laws that would, if passed disband the Student Activities Committee (SAC) which has been inactive for the past two years.

## Freshman Elections To be Held Wednesday

Elections for the president, vice-president, secretary and treasurer of the class of 1971 will be held on Sept. 27.

These elections, directed by the Student Senate, will be run in conjunction with the elections to fill two Student Senate vacancies. The person elected president will serve as the freshman representative on the student senate.

The nominating committee is made up of eleven students: Mary Ann Brion, Kathy Chapman, Kathleen Graham, Robert Handorf, Sherry Knutsen, Nancy Kubker, Mari Jo Lee, Robert Priebe, Michele Stevens, Barbara Todd, Barbara Ann Wild.

These students were selected at random from a group of volunteers. They are automatically barred from entering the elections as candidates because of their position on the nominating committee.

The nominating committee will establish criteria which the candidate must meet. However, anyone who wishes to take out a petition to enter the elections will not have to meet the standards of the committee.

## ELECTION INTERVIEWS

Candidates for the freshman class offices will be required to submit a paper stating their reasons and qualifications for wanting to be a class officer and to attend an interview being held at 6 p.m. on Sept. 19 and 20.

The interview, to be conducted by the nominating committee is open to the public. Each candidate will be asked five questions prepared by the committee.

The committee announced that anyone who would like to have his name on the ballot for class officer can do so by submitting a petition of fifty signatures to Dr. Webster in room 104 North Hall. The petition must be in to Dr. Webster by Sept. 21.

Identification cards for students enrolled in the student insurance program may be picked up at the personnel office.

Enrollment cards may also be picked up at the personnel office.

The dead line for insurance forms through the mail is Sept. 20. After this time, enrollment can be obtained only through the Student Senate office.

Students forced to drop classes because of closure or cancellation should be sure to fill out a drop-add form.

Otherwise an "F" may be recorded for the class.